



## Accessory Fitting Instructions

Heated Grip Kit	
Kit Number	Models Affected
A9630822	Street Twin from VIN AB9715 with Euro 5 engine ECM (see below), Speed Twin 900
A9630900	Street Scrambler from VIN AB9837 with Euro 5 engine ECM (see below), Scrambler 900
A9631556	Speed Twin from VIN AE2311 with Euro 5 engine ECM (see below)

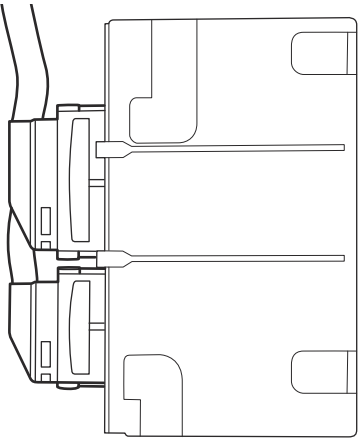
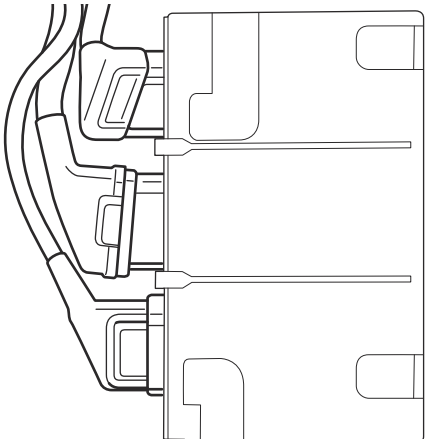
Thank you for choosing this Triumph genuine accessory kit. This accessory kit is the product of Triumph's use of proven engineering, exhaustive testing, and continuous striving for superior reliability, safety and performance.

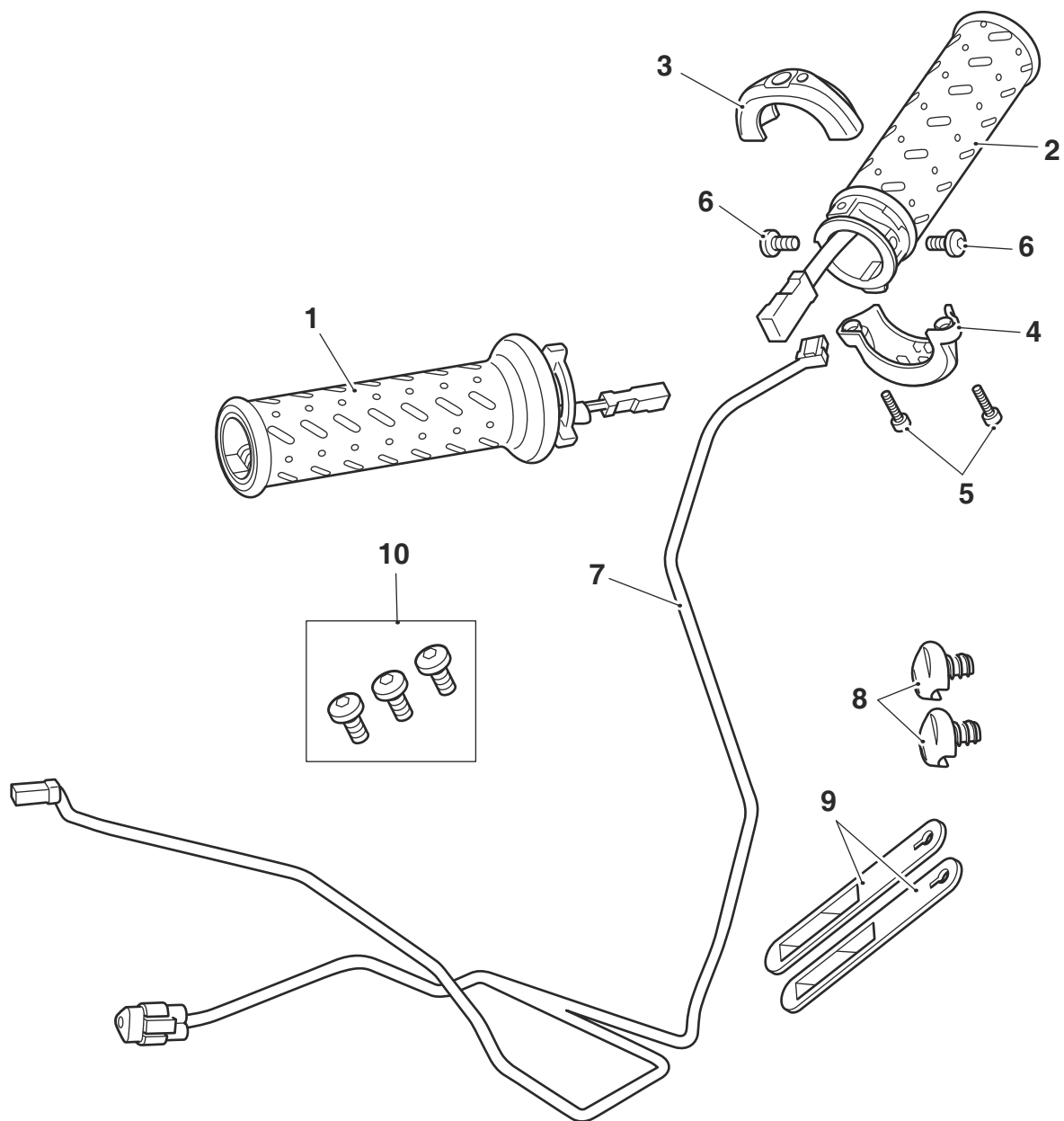
Completely read all of these instructions before commencing the installation of the accessory kit in order to become thoroughly familiar with the kit's features and the installation process.

These instructions should be considered a permanent part of your accessory kit, and should remain with it even if your accessory equipped motorcycle is subsequently sold.

**Note:**

- The engine ECM is located under the seat.

Engine ECM Identification	
Euro 4 ECM	Euro 5 ECM
	
Two connectors	Three connectors



1. Heated grip, right hand	1 off	6. Fixing, M4 x 10 mm	2 off
2. Heated grip, left hand	1 off	7. Subharness	1 off
3. Switch housing, upper	1 off	8. Bar end plug (A9638022 only)	2 off
4. Switch housing, lower	1 off	9. Rubber strap (A9638022, A9630900 only)	2 off
5. Screw, Torx head self-tapping	2 off	10. Fixing, M6 x 12 mm pan head, encapsulated	3 off

 **Warning**

Fit only genuine Triumph accessories to those models approved by Triumph as listed in the associated Triumph fitting instructions. The accessory kits covered in this instruction are designed for use on specific models of Triumph motorcycle. The accessory kits and the models applicable are listed at the start of the instruction. They should never be fitted to any other Triumph model or to any other manufacturer's motorcycle. Fitting an accessory kit to a Triumph model not listed, or to any other manufacturer's motorcycle will affect the performance, stability and handling of the motorcycle. This may affect the rider's ability to control the motorcycle and could result in an accident causing severe injuries or death.

 **Warning**

Always have Triumph approved parts, accessories and conversions fitted by a trained technician of an authorised Triumph dealer. The fitment of parts, accessories and conversions by a technician who is not of an authorised Triumph dealer may affect the handling, stability or other aspects of the motorcycle's operation which will result in loss of motorcycle control and an accident.

 **Warning**

Always make sure that the newly installed wiring does not chafe against other parts of the motorcycle such that it may be rubbed through and cause an electrical problem. In addition, always make sure that the newly installed wiring will not restrict steering movement. Both conditions are hazardous and could give rise to a dangerous riding condition resulting in a fire, loss of motorcycle control and an accident.

 **Warning**

Make sure the motorcycle is supported. A correctly supported motorcycle will help prevent it from falling. An unstable motorcycle may fall, causing injury to the operator or damage to the motorcycle.

 **Warning**

A torque wrench of known accurate calibration must be used when fitting this accessory kit. Failure to tighten any of the fasteners to the correct torque specification may affect motorcycle performance, handling and stability. This will result in loss of motorcycle control and an accident.

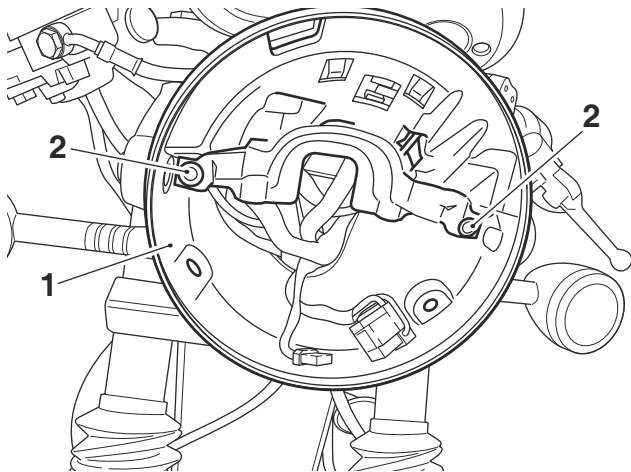
**Note:**

- **Triumph offers a broad range of approved genuine accessories for your motorcycle. We cannot therefore cover all possible equipment variations in these instructions. For removal and installation of Triumph Genuine Accessories always refer to the instructions supplied with the respective accessory kit. To obtain additional copies of any Triumph accessory instructions, visit [www.triumphinstructions.com](http://www.triumphinstructions.com) or contact your authorised Triumph dealer.**

**All Models**

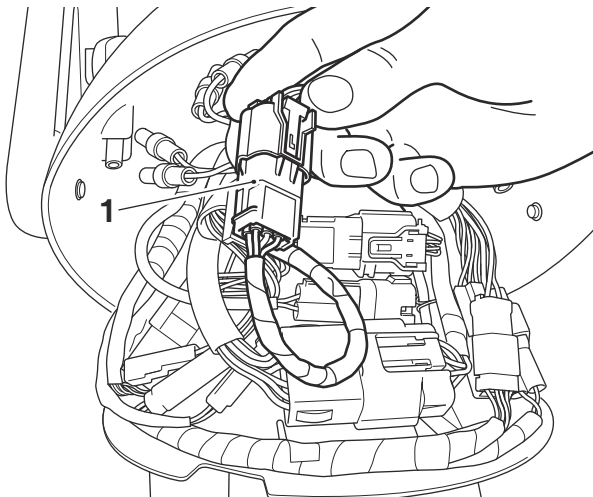
1. Remove the seat, as described in the Service Manual.
2. Disconnect the battery, as described in the Service Manual.
3. Remove the fuel tank, as described in the Service Manual.
4. Remove the left hand and right hand bar end finishers, and bar end mirrors if fitted, as described in the Service Manual. Retain the bar end finishers or mirrors for reuse.
5. Remove the headlamp bezel fixings and remove the headlamp bezel and lens assembly, as described in the Service Manual. Retain the fixings for reuse.

- Remove the headlamp inner cover fixings. Retain the fixings for reuse.



- Inner cover
- Fixings

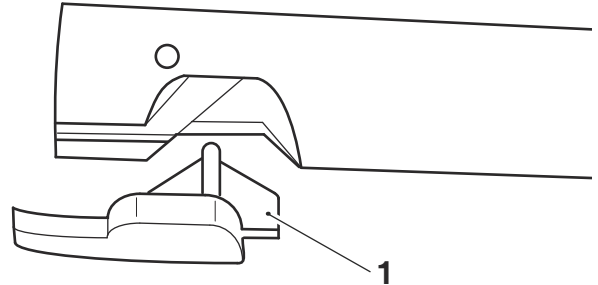
- Disconnect the throttle harness connector from the main harness connector.



- Throttle harness connector

- Slide the left hand grip off the handlebar. Retain the grip for reuse if the motorcycle is to be returned to its original condition.

- Remove the plastic insert from the end of the left hand side of the handlebars, as shown. Retain the plastic insert for reuse if the motorcycle is to be returned to its original condition.



- Plastic insert

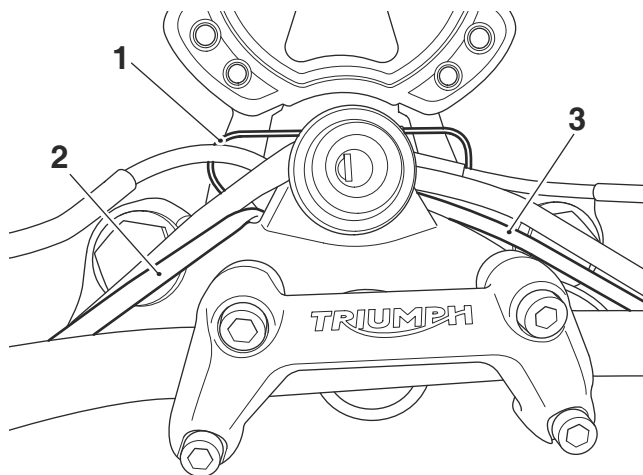
- Remove the twist grip from the right hand side of the handlebars, as described in the Service Manual. Retain the twist grip for reuse if the motorcycle is to be returned to its original condition.
- Collect the subharness provided in the kit.

**Note:**

- The subharness lead with the 2 pin connector is routed to the right hand (throttle) side of the handlebar.
- The subharness lead with the 3 or 4 pin connector is routed to the left hand (clutch) side of the handlebar.

## Street Twin and Speed Twin 900 Models Only

12. Route the subharness past the left hand side of the headstock towards the handlebars with the 4 pin connector lead through the cable guide on the left hand side and the 2 pin connector lead through the cable guide on the right hand side.

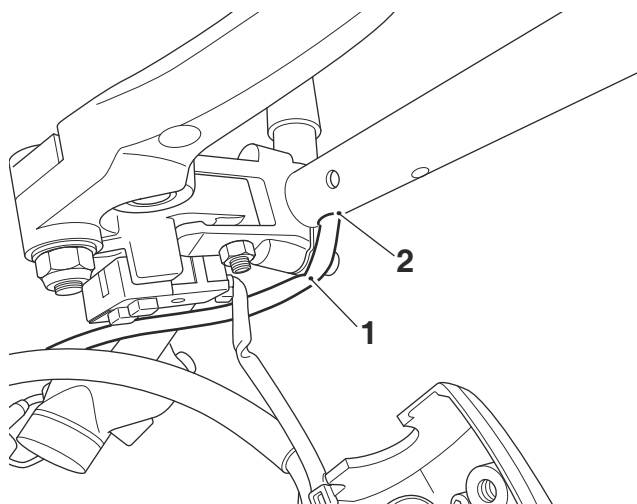


1. Cable guide
2. Subharness lead, 4 pin connector
3. Subharness lead, 2 pin connector

### Note:

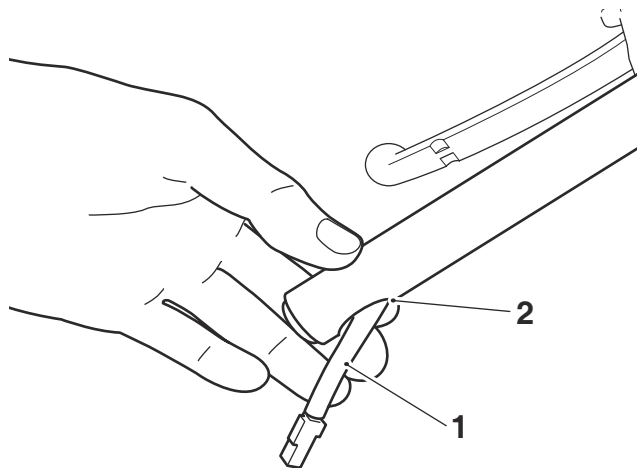
- For Street Twin and Speed Twin 900 without accessory Ace handlebars fitted follow steps 13 to 19. For Street Twin and Speed Twin 900 with accessory Ace handlebars fitted continue from step 20.
13. Remove the left hand switch housing. Without disconnecting any wiring move the switch housing along the handlebar to expose the slot in the underside of the handlebar. Retain the fixings for reuse.

14. Thread the subharness lead with the 4 pin connector into the slot on the underside of the handlebar, as shown.



1. Subharness lead
2. Slot, handlebar

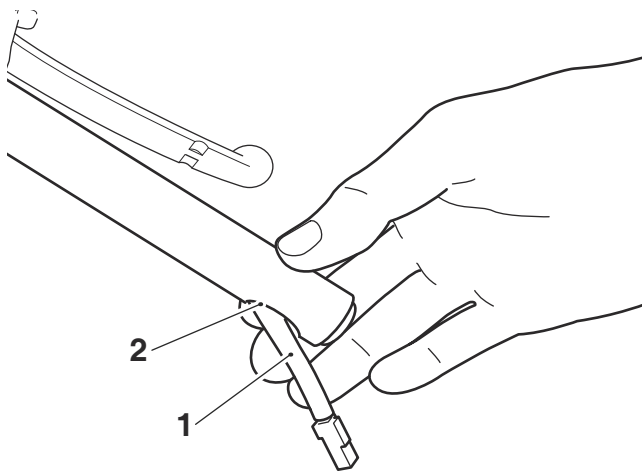
15. Feed the subharness lead connector towards the left hand side of the handlebar and out through the slot in the handlebar end weight mounting area of the handlebar.



1. Subharness
2. Slot, handlebar

16. Remove the right hand switch housing. Without disconnecting any wiring move the switch housing along the handlebar to expose the slot in the underside of the handlebar. Retain the fixings for reuse.
17. Thread the subharness lead with the 2 pin connector into the slot on the underside of the handlebar.

18. Feed the subharness lead connector towards the right hand side of the handlebar and out through the slot in the handlebar end weight mounting area of the handlebar.



1. Subharness  
2. Slot, handlebar



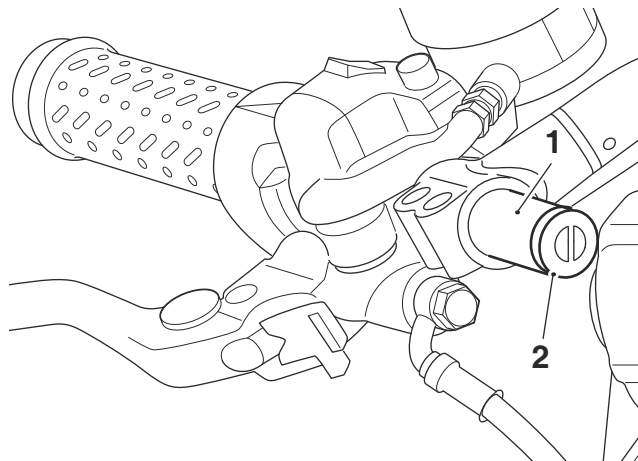
### Caution

A wiring harness which becomes trapped or kinked during installation, or general motorcycle operation, may result in wiring harness damage and electrical malfunctions.

19. Refit the left hand and right hand switch housings with the original fixings. Tighten the fixings to **2.5 Nm**.

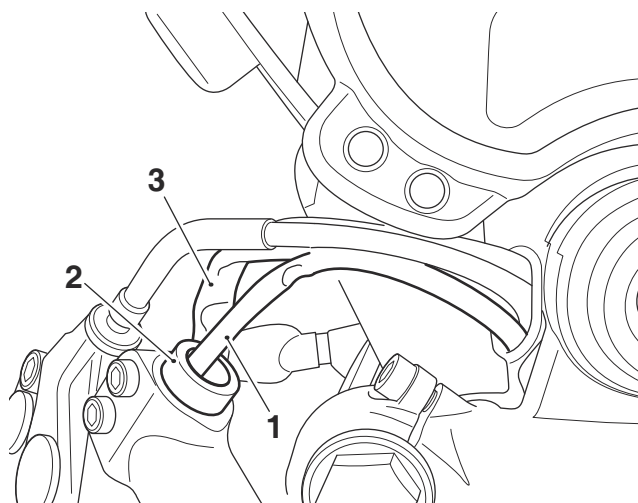
### Street Twin and Speed Twin 900 with accessory Ace handlebars fitted Only

20. Remove the blanking plugs from inside the left hand and right hand handlebars. Retain the plugs for reuse if the motorcycle is to be returned to its original condition.



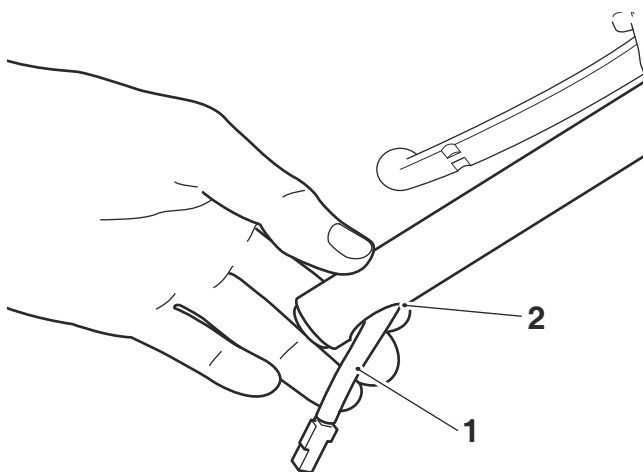
1. Handlebar, right hand shown  
2. Blanking plug

21. Route the subharness lead with the 4 pin connector along the left hand switch harness and in to the end of the left hand handlebar, as shown.



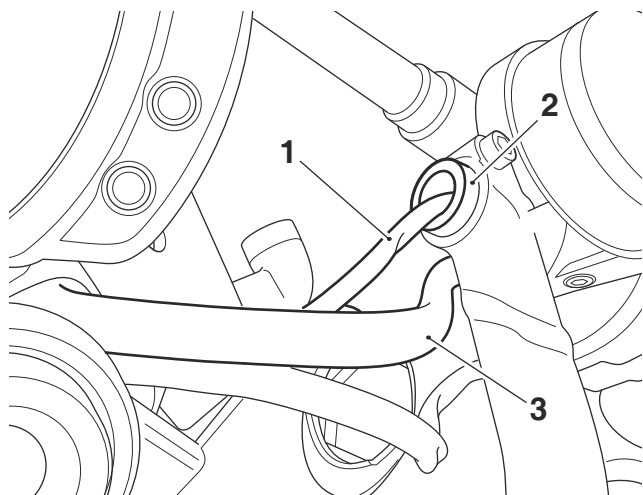
1. Subharness, 4 pin connector  
2. Handlebar  
3. Switch harness, left hand

22. Feed the subharness through the handlebar and out of the slot in the handlebar end weight mounting area of the handlebar.



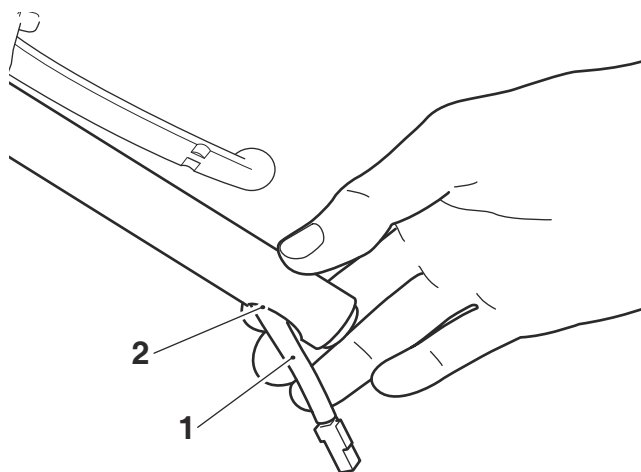
- 1. Subharness
- 2. Slot, handlebar

23. Route the subharness lead with the 2 pin connector along the right hand switch harness and in to the end of the handlebar, as shown.



- 1. Subharness, 2 pin connector
- 2. Handlebar
- 3. Switch harness, right hand

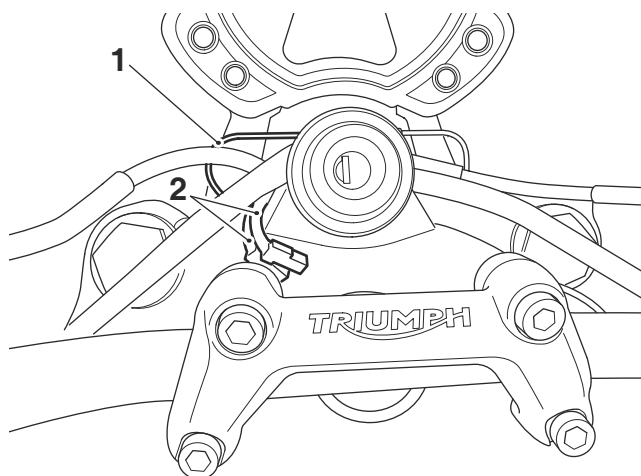
24. Feed the subharness through the handlebar and out through the slot in the handlebar end weight mounting area of the handlebar.



- 1. Subharness
- 2. Slot, handlebar

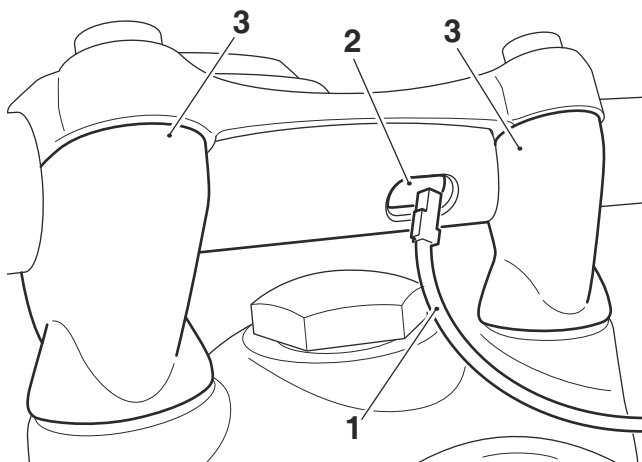
### Street Scrambler, Scrambler 900, Speed Twin Models Only

25. Route the subharness past the left hand side of the headstock towards the centre of the handlebars with both connector leads through the cable guide on the left hand side as shown.



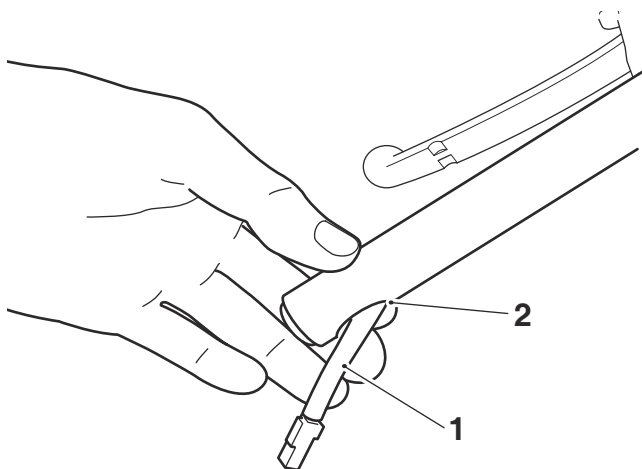
- 1. Cable guide
- 2. Subharness connector leads

26. Thread the subharness lead with the 4 pin connector into the slot on the underside of the handlebar between the handlebar risers, as shown.



- 1. Subharness lead, 4 pin connector
- 2. Slot, handlebar
- 3. Handlebar riser

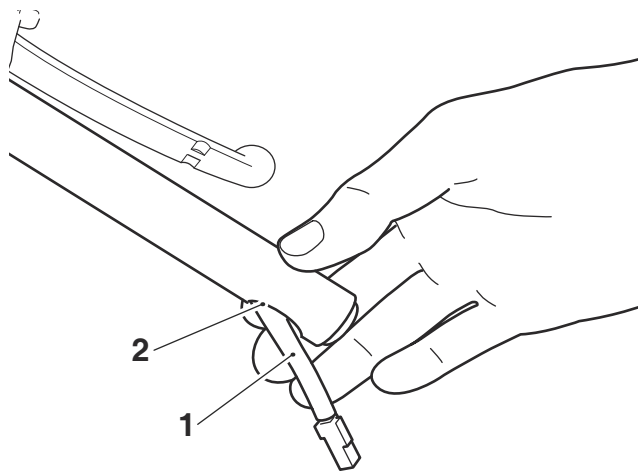
27. Feed the subharness lead connector towards the left hand side of the handlebar and out through the slot in the handlebar end weight mounting area of the handlebar.



- 1. Subharness
- 2. Slot, handlebar

28. Repeat step 26 for the subharness lead with the 2 pin connector.

29. Feed the subharness lead connector towards the right hand side of the handlebar and out through the slot in the handlebar end weight mounting area of the handlebar.



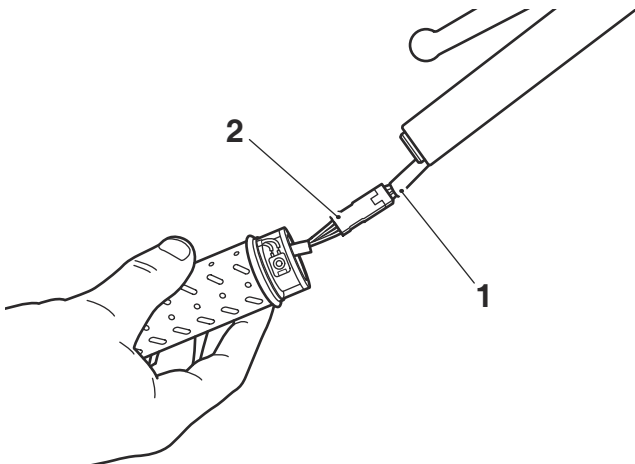
- 1. Subharness
- 2. Slot, handlebar



## All Models

### Left Hand Side

30. Connect the subharness connector to the left hand heated grip electrical connector.

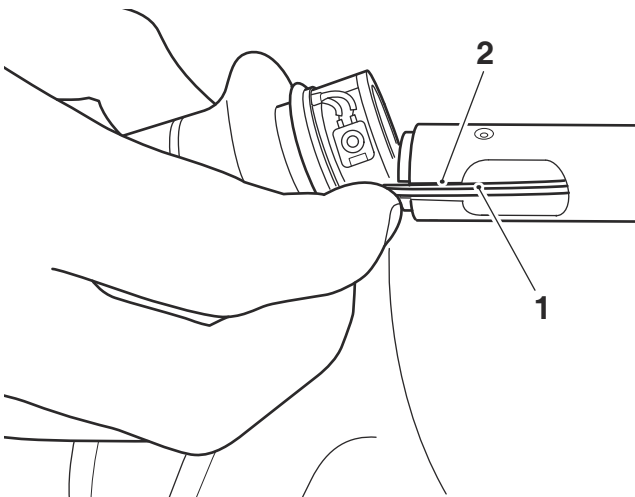


1. Subharness connector  
2. Heated grip connector

### Caution

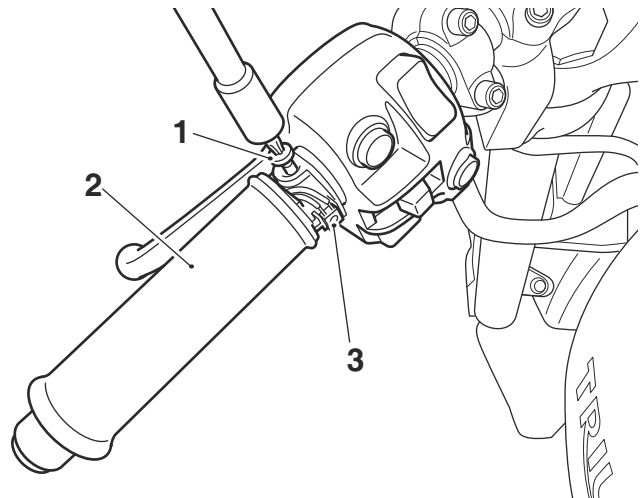
A wiring harness which becomes trapped or kinked during installation, or general motorcycle operation, may result in wiring harness damage and electrical malfunctions.

31. When fitting the grip onto the handlebar, carefully pull the lead back through the hole in the underside of the handlebar making sure the subharness/heated grip connection is positioned into the handlebar and the wires remain in the slot in the bar end.



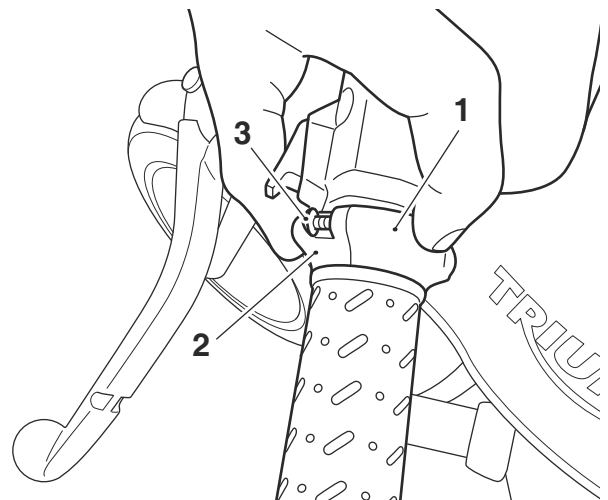
1. Wires  
2. Slot, handlebar

32. Make sure the grip is in the orientation shown below with the switch contacts facing the rider. Secure the new grip with the two M4 x 10 mm fixings provided in the kit. Tighten the fixings to **2 Nm**.



1. Fixing, M4 x 10 mm (one of two shown)  
2. Heated grip  
3. Switch contacts

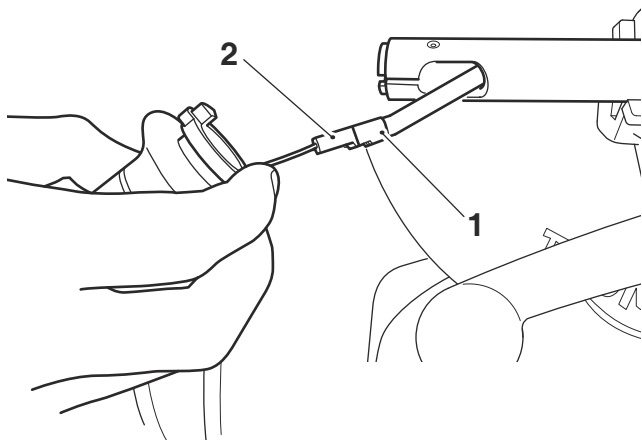
33. Fit the upper and lower switch housings on to the heated grip and retain with the Torx head self-tapping screws provided in the kit. Tighten the screws to **1 Nm**.



1. Upper switch housing  
2. Lower switch housing  
3. Self-tapping screw, Torx head (one of two shown)

### Right Hand Side

34. Connect the 2 pin subharness connector to the right hand heated grip (twist grip) connector.



1. Subharness connector (2 pin)  
2. Heated twist grip connector

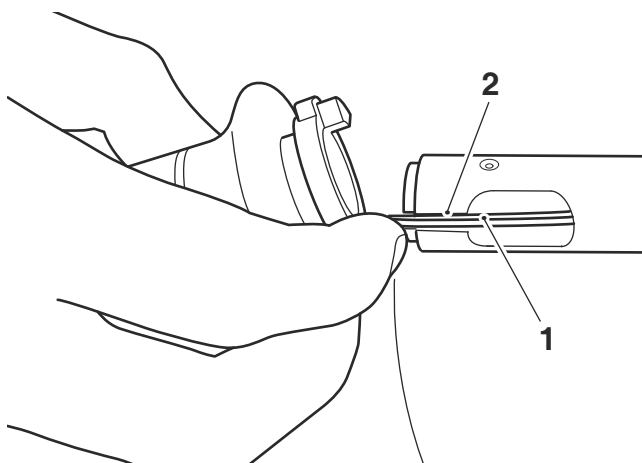


### Caution

A wiring harness which becomes trapped or kinked during installation, or general motorcycle operation, may result in wiring harness damage and electrical malfunctions.

#### Note:

- **The method of fitting the right hand heated grip (twist grip) to the APS assembly and handlebars is the same as that for the original twist grip, as described in the Service Manual.**
35. When fitting the grip onto the handlebar, carefully pull the lead back through the hole in the underside of the handlebar making sure the subharness/heated grip connection is positioned into the handlebar and the wires remain in the slot in the bar end.



1. Wires  
2. Slot, handlebar

36. Make sure there is enough slack in the wires for the twist grip to rotate and the wires not to become trapped.



### Warning

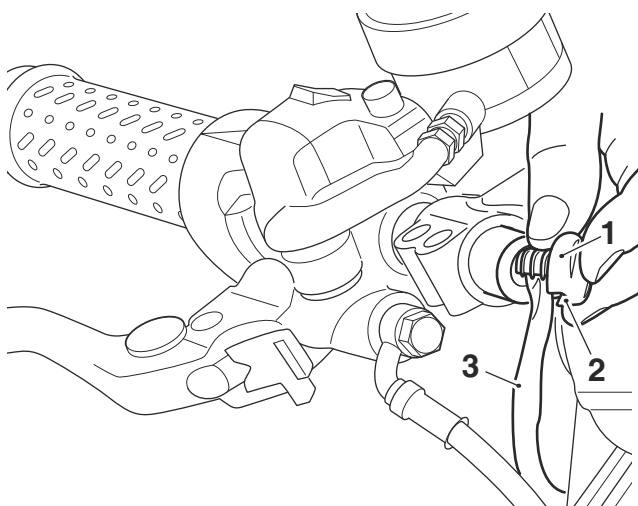
Check the operation of the right hand heated grip (twist grip). Make sure that the rearward and forward movement of the grip is smooth, without tightness and will return to the throttle closed position when released.

A tight or stuck twist grip may lead to loss of motorcycle control and an accident.

37. Carefully check that the twist grip rotates smoothly through its full range of movement, and is not restricted in any way. If any tightness or resistance is felt, check and rectify the cause before riding the motorcycle.
38. Refit the rear of the twist grip housing as described in the Service Manual and tighten its fixings to **2.5 Nm**.
39. Make sure the throttle is fully closed, and the electrical cable inside the twist grip has adequate slack to allow correct throttle operation.

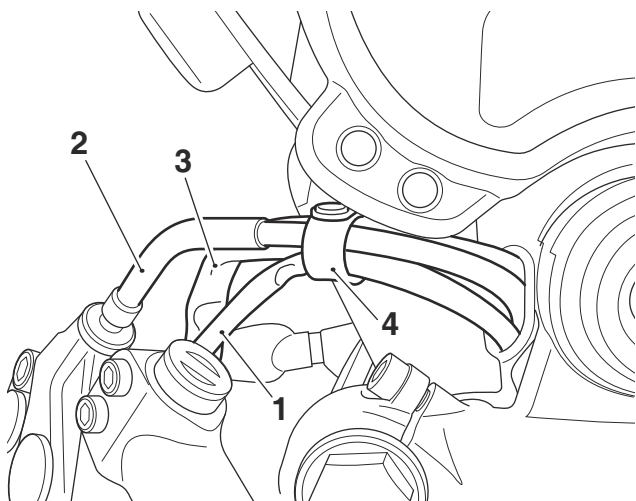
### Street Twin and Speed Twin 900 with Accessory Ace Handlebars fitted Only

40. Fit the blanking plugs provided in the kit to the handlebars making sure that the heated grip harnesses locate correctly in the cut out at the bottom of the plug.



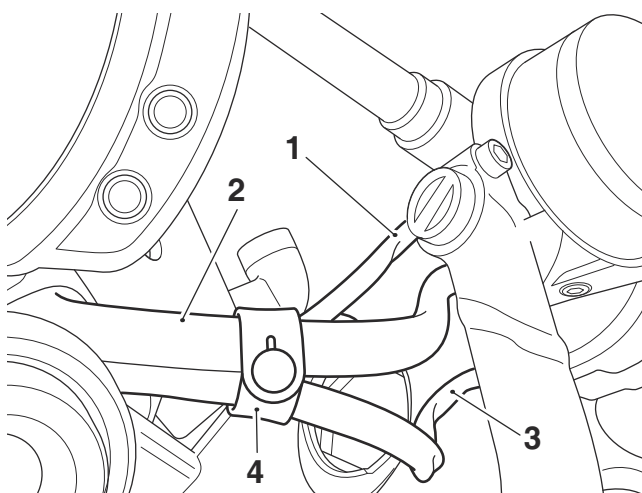
1. Blanking plug, right hand side shown  
2. Cut out  
3. Heated grip subharness

41. Following the route of the left hand switch harness, secure the heated grip subharness to the switch harness and clutch cable with the original rubber strap.



1. Heated grip subharness
2. Clutch cable
3. Switch harness
4. Rubber strap

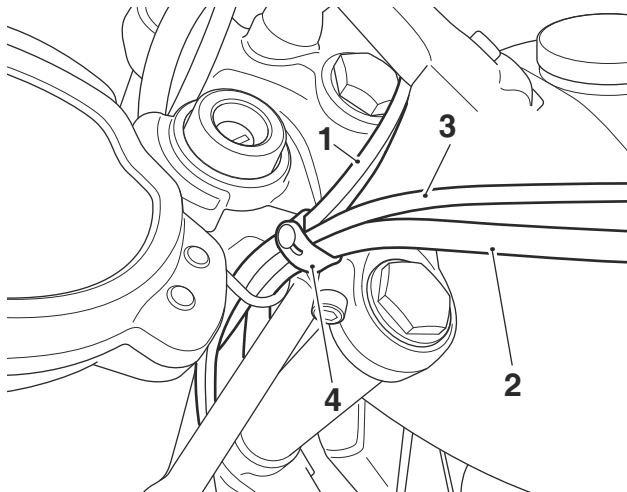
42. Following the route of the right hand switch harness, secure the heated grip subharness to the switch harness and twist grip harness with the original rubber strap.



1. Heated grip subharness
2. Switch harness
3. Twist grip harness
4. Rubber strap

### Street Scrambler, Scrambler 900 and Speed Twin Models Only

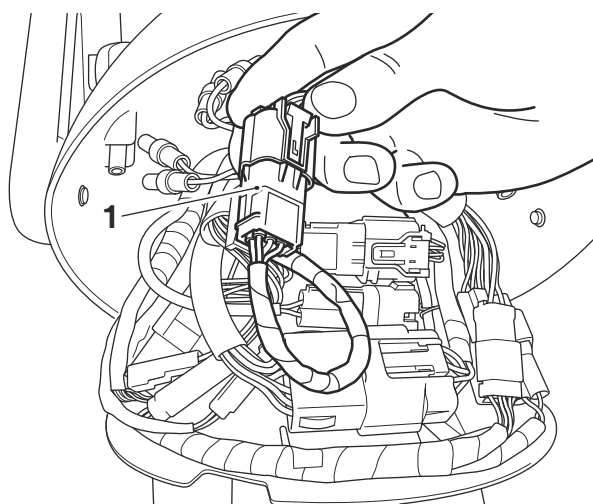
43. Secure the heated grip subharnesses to the left hand switch harness and clutch cable with the rubber strap from the kit for Street Scrambler models as shown, or reuse the original strap on the left hand switch harness for Speed Twin models.



1. Heated grip subharnesses
2. Left hand switch harness
3. Clutch cable
4. Rubber strap

### All Models

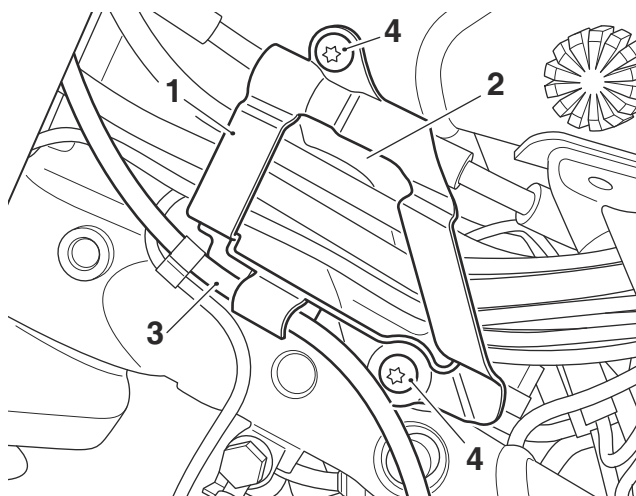
44. Reconnect the throttle harness connector to the main harness connector in the headlamp bowl.



1. Throttle harness connector

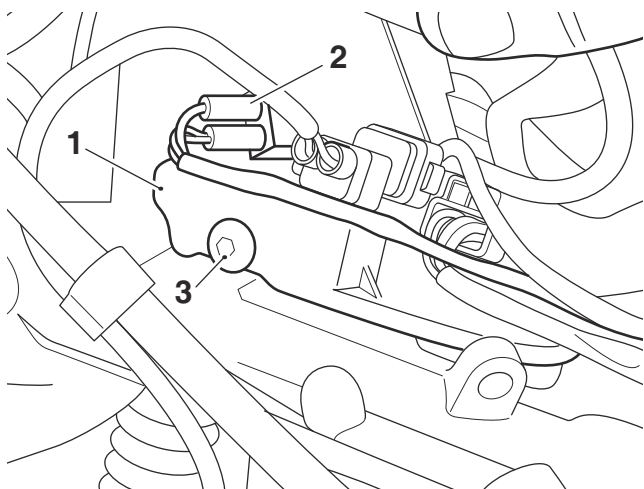
45. Refit the headlamp inner cowl with the original fixings. Tighten the fixings to **1.5 Nm**.
46. Refit the headlamp bezel and lens assembly, as described in the Service Manual.

47. On the left hand side of the motorcycle, remove the clutch cable from the retaining feature on the cable guide. Remove the front and rear cable guides. Retain the cable guides for reuse, discard fixings.



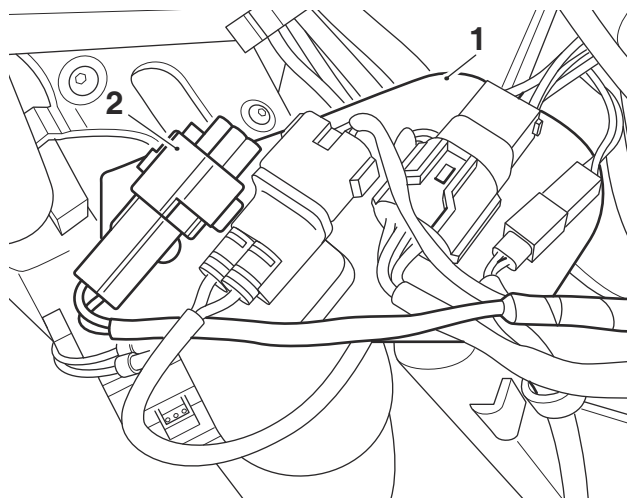
- 1. Front cable guide
- 2. Rear cable guide
- 3. Clutch cable
- 4. Fixings

48. Locate the bracket positioned behind the headstock which retains the main wiring harness heated grip connector. Remove the fixing and discard.



- 1. Bracket
- 2. Main wiring harness heated grip connector
- 3. Fixing

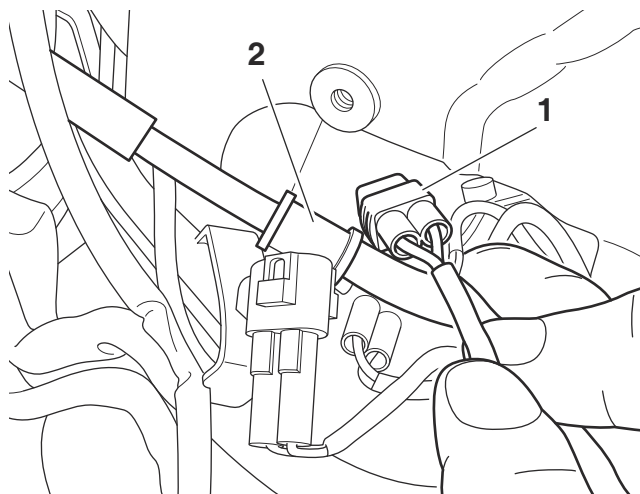
49. Carefully lever the bracket out to reveal the main wiring harness heated grip connector, as shown.



- 1. Bracket
- 2. Main wiring harness heated grip connector

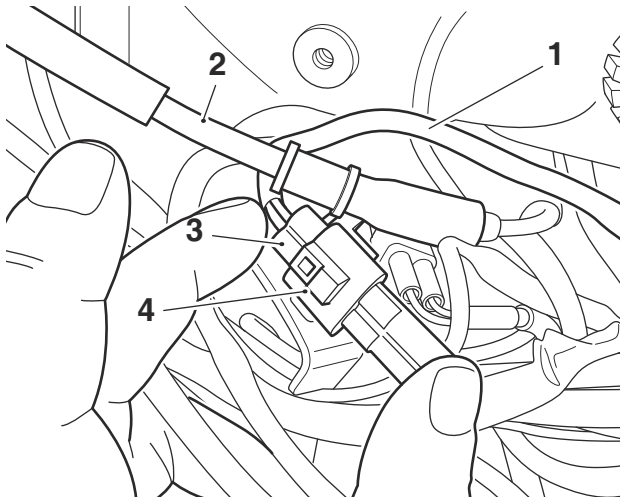
50. Remove the blanking plug from the main wiring harness heated grip connector. Retain the blanking plug for reuse if the motorcycle is to be returned to its original condition.

51. Route the heated grip subharness over the brake hose, as shown.



- 1. Heated grip subharness
- 2. Brake hose

52. Route the heated grip subharness under the brake hose as shown and connect the subharness connector to the main wiring harness heated grip connector.



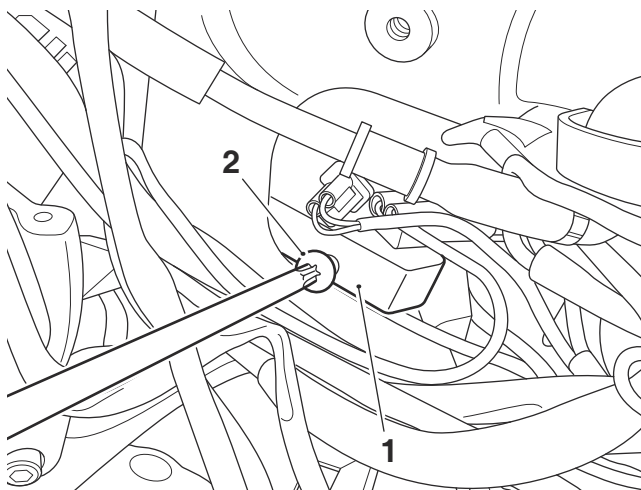
1. Heated grip subharness
2. Brake hose
3. Heated grip subharness connector
4. Main wiring harness heated grip connector



### Caution

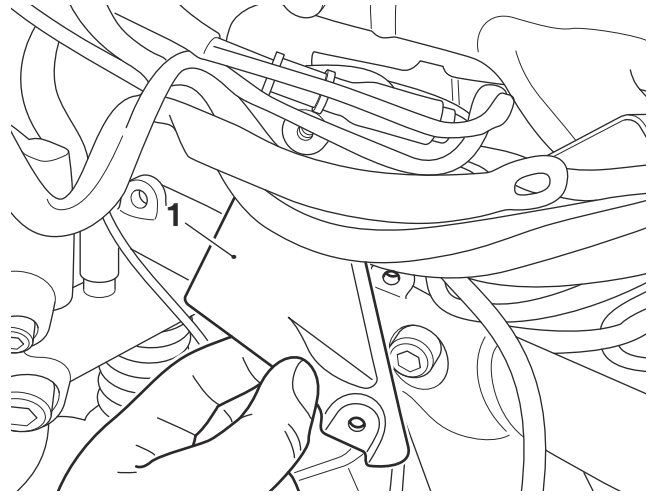
A wiring harness which becomes trapped or kinked during installation, or general motorcycle operation, may result in wiring harness damage and electrical malfunctions.

53. Refit the electrical connector bracket into its original location. Secure with an M6 x 12 mm fixing from the kit. Tighten to **3 Nm**.



1. Bracket
2. Fixing, M6 x 12 mm

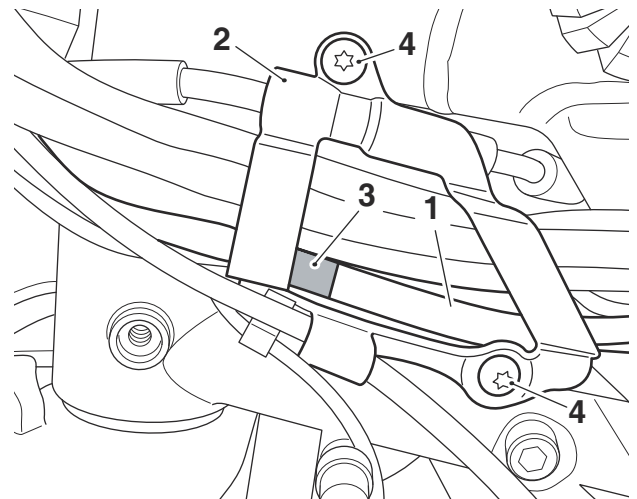
54. Refit the rear cable guide on the left hand of the motorcycle. Make sure all cables and harnesses are positioned in front of the cable guide.



1. Rear cable guide

### Speed Twin Models Only

55. Position the front cable guide onto the rear cable guide. Make sure the heated grip subharness is located behind the front cable guide and the blue indicator tape on the subharness is positioned as shown. Secure the rear and front cable guides with two M6 x 12 mm fixings from the kit. Make sure no cables or harnesses are trapped. Tighten the fixings to **3 Nm**.

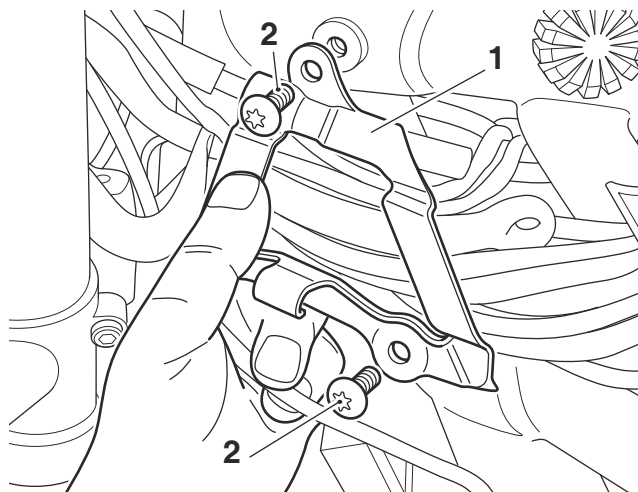


1. Heated grip subharness
2. Front cable guide
3. Blue indicator tape
4. Fixings, M6 x 12 mm



### Street Twin, Speed Twin 900, Street Scrambler and Scrambler 900 Models Only

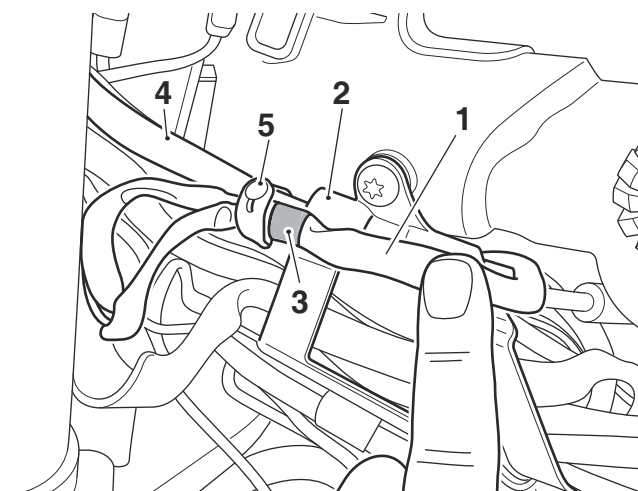
56. Position the front cable guide onto the rear cable guide. Make sure the heated grip subharness is not located behind the front cable guide. Secure the rear and front cable guides with two M6 x 12 mm fixings from the kit. Make sure no cables or harnesses are trapped. Tighten the fixings to **3 Nm**.



- 1. Front cable guide
- 2. Fixings. M6 x 12 mm

### Street Scrambler, Scrambler 900, Street Twin and Speed Twin 900 without accessory Ace handlebars fitted Only

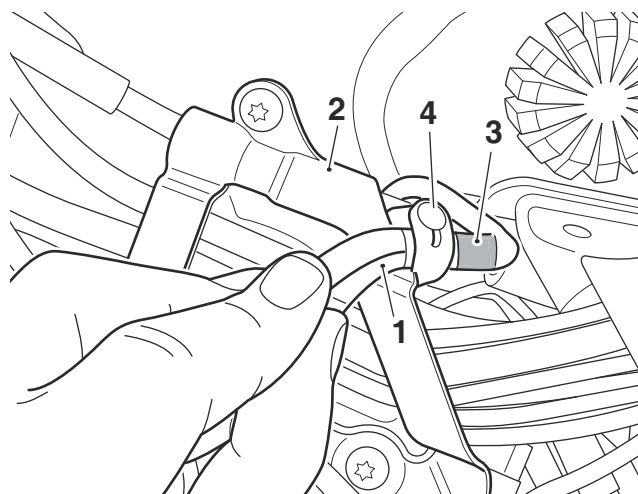
57. Position the heated grip subharness with the blue indicator tape to the front of the front cable guide as shown. Fit a rubber strap from the kit in the position shown to secure the heated grip subharness to the brake hose.



- 1. Heated grip subharness
- 2. Front cable guide
- 3. Blue indicator tape
- 4. Brake hose
- 5. Rubber strap

### Street Twin and Speed Twin 900 with accessory Ace handlebars fitted Only

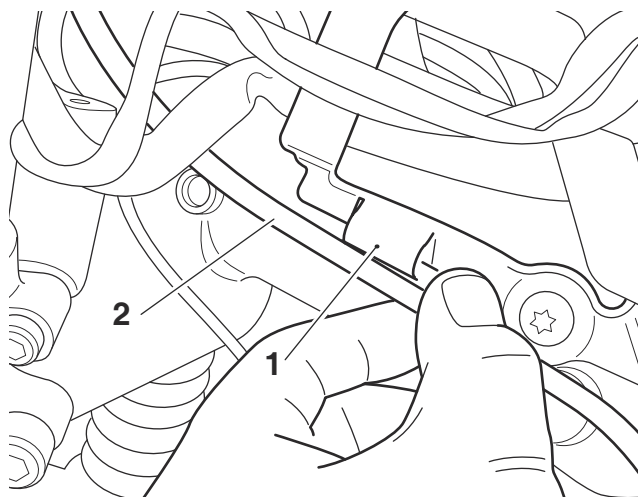
58. Position the heated grip subharness with the blue indicator tape to the rear of the front cable guide as shown. Fit a rubber strap from the kit between the blue indicator tape and the front cable guide to secure the heated grip subharness to the brake hose.



- 1. Heated grip subharness
- 2. Front cable guide
- 3. Blue indicator tape
- 4. Rubber strap

### All Models

59. Secure the clutch cable into the retaining feature on the front cable guide, as shown.



- 1. Retaining feature, front cable guide
- 2. Clutch cable



## Warning

Move the handlebars to the left and right full lock while checking that the cables and harness do not bind. A cable or harness that binds will restrict the steering and may cause loss of motorcycle control and an accident.

60. Check that there is sufficient slack in the subharness available to allow the handlebars to be turned from left to right full lock positions.
61. Refit the fuel tank, as described in the Service Manual.
62. Reconnect the battery, as described in the Service Manual.
63. Refit the seat, as described in the Service Manual.
64. Refit the left hand and right hand mirrors if fitted and bar end finishers, as described in the Service Manual.
65. Adjust the left hand and right hand mirrors to provide clear rear visibility in the normal riding position.

### Heated Grip System Testing

#### Note:

- **During the initial engine start up phase the engine control module will run a self check of the heated grip circuit.**



## Warning

Never start the engine or let it run for any length of time in a closed area. The exhaust fumes are poisonous and may cause loss of consciousness and death within a short time. Always operate the motorcycle in the open-air or in an area with adequate ventilation.

1. Start the engine and allow to idle to avoid discharging the battery.
2. Check that the temperature of the heated grips increases.
3. Fuse number 4 of the front fuse box protects the heated grip circuit. Refer to the label in the fuse box lid for fuse amperage.

### Operation

The heated grips button is located on the left hand grip.

The heated grips work when the ignition is switched on. However, it is recommended that they are only used when the engine is running to avoid draining the battery.

There are two heat levels; low or high.

Press the heated grip button to show the current status of the heated grips in the display screen. This is shown for three seconds.

Press the heated grip button whilst the status is showing to select one of the three different statuses: OFF, Lo (low) or HI (high).

For maximum benefit from cold conditions, use the heated grips in the HI status initially and when the grips have warmed up, change the status to Lo.

To switch off the heated grips, press and release the button until OFF is shown in the display screen. The heated grips are also switched off when the ignition is switched off.

### Automatic Shutdown

If heated grips are fitted and are on with the engine not running, over a period of time, the battery voltage may drop below 11.8 Volts and 'LoBatt' is then shown in the display screen for three seconds.

If the heated grips are on and 'LoBatt' is shown, then the heated grips are automatically switched off to prevent further discharge of the battery. It is not possible to resume heated grip operation until the engine has been running and the battery voltage has increased above 11.8 Volts.

In the event of a short circuit issue, 'HgrOFF' is shown in the display screen and the heated grips are automatically switched off. The heated grips can be switched back on after 25 seconds.



## Warning

If, after fitment of this accessory kit, you have any doubt about the performance of any aspect of the motorcycle, contact an authorised Triumph dealer and do not ride the motorcycle until the authorised dealer has declared it fit for use. Riding a motorcycle when there is any doubt as to any aspect of the performance of the motorcycle may result in loss of motorcycle control and an accident.



### Warning

Never ride an accessory equipped motorcycle at speeds above 80 mph (130 km/h).

The presence of accessories will cause changes in the stability and handling of the motorcycle. Failure to allow for changes in motorcycle stability may lead to loss of motorcycle control and an accident.

Remember that the 80 mph (130 km/h) limit will be reduced by the fitting of non-approved accessories, incorrect loading, worn tyres, overall motorcycle condition and poor road or weather conditions.



### Warning

The motorcycle must not be operated above the legal road speed limit except in closed-course conditions.



### Warning

Only operate this Triumph motorcycle at high speed in closed-course, on-road competition or on closed-course racetracks. High-speed operation should only be attempted by riders who have been instructed in the techniques necessary for high-speed riding and are familiar with the motorcycle's characteristics in all conditions.

High-speed operation in any other circumstances is dangerous and may lead to loss of motorcycle control and an accident.