



Accessory Fitting Instructions

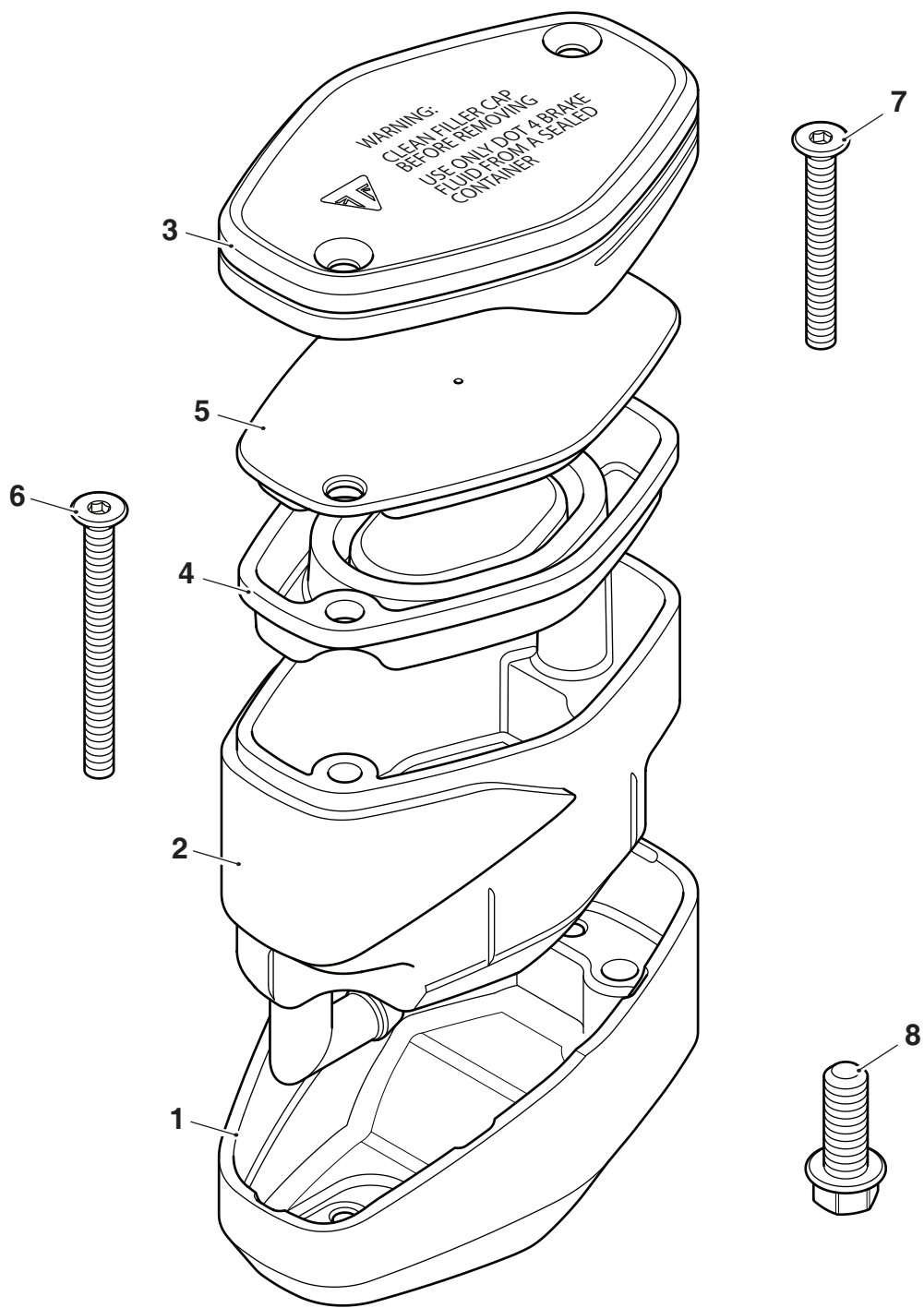
Front Machined Brake Reservoir Kit	
Kit Number	Models Affected
A9628263	Street Triple RS from VIN 966534, Street Triple RS Moto2™, Speed Triple 1200 RS, Speed Triple 1200 RR

Thank you for choosing this Triumph genuine accessory kit. This accessory kit is the product of Triumph's use of proven engineering, exhaustive testing, and continuous striving for superior reliability, safety and performance.

Completely read all of these instructions before commencing the installation of the accessory kit in order to become thoroughly familiar with the kit's features and the installation process.

These instructions should be considered a permanent part of your accessory kit, and should remain with it even if your accessory equipped motorcycle is subsequently sold.

Parts Supplied



1.	Reservoir base	1 off	5.	Diaphragm support	1 off
2.	Brake fluid reservoir	1 off	6.	Fixing, M4 x 45 mm	1 off
3.	Reservoir cap	1 off	7.	Fixing, M4 x 35 mm	1 off
4.	Diaphragm	1 off	8.	Fixing, M6 x 16 mm	1 off



Warning

Fit only genuine Triumph accessories to those models approved by Triumph as listed in the associated Triumph fitting instructions. The accessory kits covered in this instruction are designed for use on specific models of Triumph motorcycle. The accessory kits and the models applicable are listed at the start of the instruction. They should never be fitted to any other Triumph model or to any other manufacturer's motorcycle. Fitting an accessory kit to a Triumph model not listed, or to any other manufacturer's motorcycle will affect the performance, stability and handling of the motorcycle. This may affect the rider's ability to control the motorcycle and could result in an accident causing severe injuries or death.



Warning

Always have Triumph approved parts, accessories and conversions fitted by a trained technician of an authorised Triumph dealer. The fitment of parts, accessories and conversions by a technician who is not of an authorised Triumph dealer may affect the handling, stability or other aspects of the motorcycle's operation which may result in loss of motorcycle control and an accident.



Warning

Make sure the motorcycle is stabilised and adequately supported. Do not support the motorcycle on any ancillary component, the exhaust system or any other non structural parts of the motorcycle frame. A correctly supported motorcycle will help prevent it from falling. An unstable motorcycle may fall, causing injury to the operator or damage to the motorcycle.



Warning

A torque wrench of known accurate calibration must be used when fitting this accessory kit. Failure to tighten any of the fasteners to the correct torque specification may affect motorcycle performance, handling and stability. This may result in loss of motorcycle control and an accident.

Note:

- Triumph offers a broad range of approved genuine accessories for your motorcycle. We cannot therefore cover all possible equipment variations in these instructions. For removal and installation of Triumph Genuine Accessories, always refer to the instructions supplied with the respective accessory kit. To obtain additional copies of any Triumph accessory instructions, visit www.triumphinstructions.com or contact your authorised Triumph dealer.

Note:

- Make sure that a relevant Triumph Service Manual is available for reference during the fitting of this accessory kit.

1. Remove the seat as described in the Service Manual.
2. Disconnect the battery as described in the Service Manual.
3. Note the position and orientation of the original master cylinder fluid reservoir.
4. Note the setting on the brake lever adjuster to make sure it is returned to the same position when the master cylinder fluid reservoir replacement procedure has been completed.



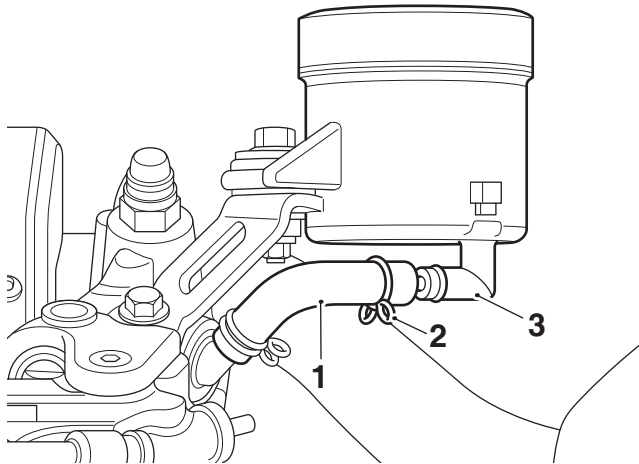
Caution

To prevent damage, Make sure that any displaced brake fluid does not come into contact with any part of the bodywork.

5. To drain the brake fluid from the master cylinder, attach a tube to the right hand brake caliper bleed nipple. Slacken the bleed nipple and allow the brake fluid to drain into a suitable container. Operate the brake lever until all fluid has been expelled from the master cylinder. Close the bleed nipple. Do not fully tighten at this stage.

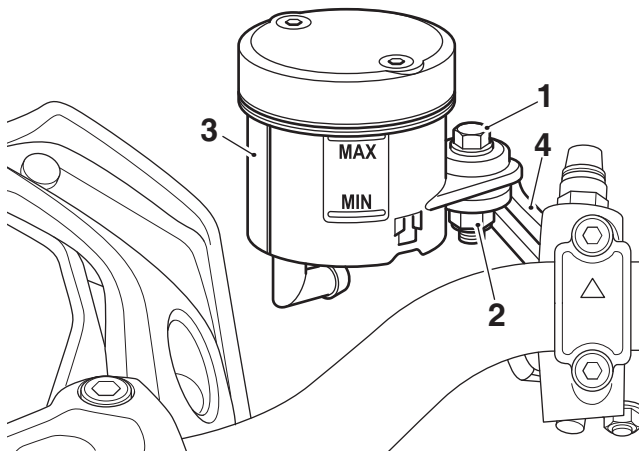
Note:

- **Note the position and orientation of the retaining clip for the brake fluid hose.**
6. Detach the brake fluid hose and its retaining clip from the reservoir, placing a cloth under the hose and reservoir connection to absorb any remaining fluid that may be displaced.



1. Brake fluid hose
2. Retaining clip
3. Reservoir spigot

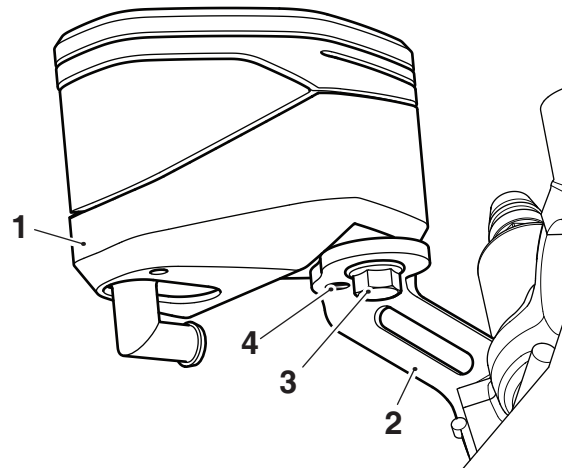
7. Remove the M6 fixing and nut securing the fluid reservoir. Retain the fixing, nut and reservoir for reuse if the motorcycle is to be returned to its original condition.



1. M6 fixing
2. Nut
3. Fluid reservoir
4. Mounting bracket

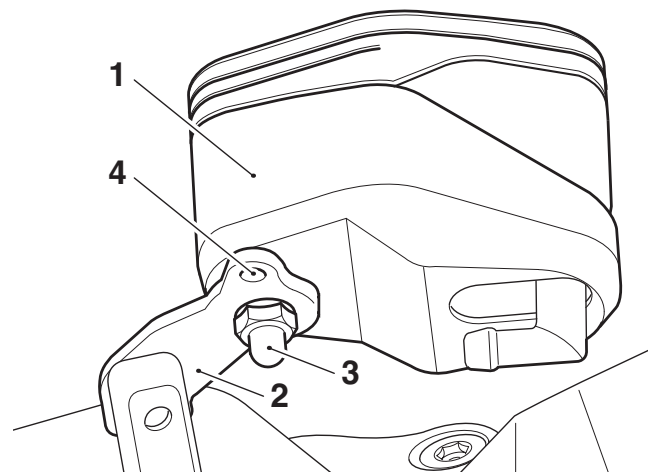
8. Locate the new fluid reservoir onto the mounting bracket in the orientation shown. Make sure the anti-rotation feature is correctly engaged in the mounting bracket and secure using the M6 x 16 mm fixing. Tighten the fixing to **6 Nm**.

Street Triple RS, Street Triple RS Moto2™, Speed Triple 1200 RS



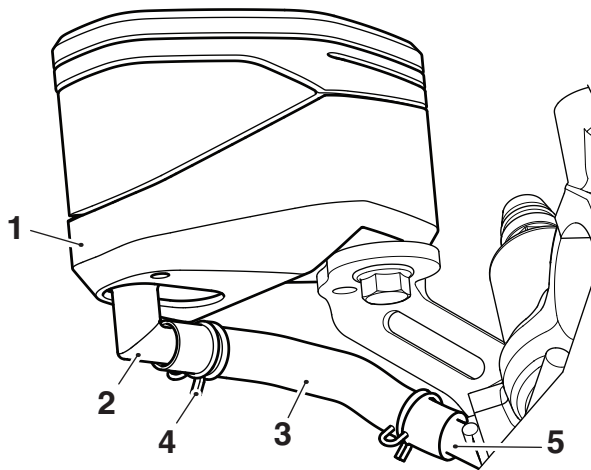
1. Fluid reservoir
2. Mounting bracket
3. Fixing, M6 x 16 mm
4. Anti-rotation feature

Speed Triple 1200 RR



1. Fluid reservoir
2. Mounting bracket
3. Fixing, M6 x 16 mm
4. Anti-rotation feature

- Refit the brake hose to the fluid reservoir spigot. Push the hose fully on to the spigot and secure with the retaining clip as noted for removal. Make sure the master cylinder spigot is rotated to avoid any sharp bends in the brake hose, the brake hose routing should be as shown below.



- Fluid reservoir
- Reservoir spigot
- Brake hose
- Retaining clip
- Master cylinder spigot

- Remove the fixings from the reservoir cap and remove the reservoir cap, diaphragm support and diaphragm.

Warning

Brake fluid is hygroscopic which means it will absorb moisture from the air. Only use DOT 4 brake fluid from a sealed container, do not mix different brands of brake fluid and never use brake fluid from an unsealed container or from one that has been previously opened. Any absorbed moisture will greatly reduce the boiling point of the brake fluid. Moisture in the braking system may cause a reduction in braking efficiency leading to loss of motorcycle control and an accident.

Warning

Always maintain absolute cleanliness when adding brake fluid to the brake fluid reservoir. Do not allow moisture or debris to enter the reservoir as this will adversely affect the brake fluid properties. This may cause a reduction in braking efficiency leading to loss of motorcycle control and an accident.

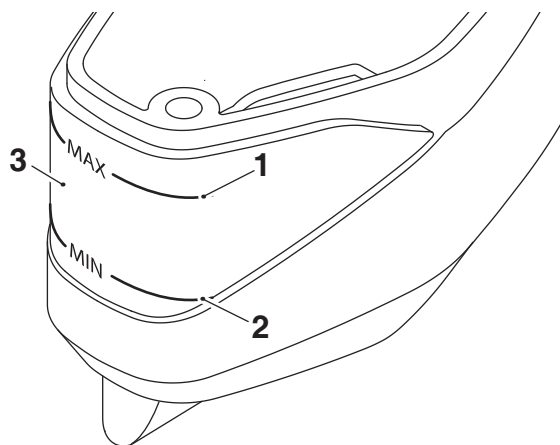
Warning

Check for fluid leakage around brake fittings, seals and joints. Leaks around fittings and joints may allow air to enter the braking system. Air entering the braking system may cause a reduction in braking efficiency leading to loss of motorcycle control and an accident.

Caution

To prevent damage, make sure that any displaced brake fluid does not come into contact with any part of the bodywork.

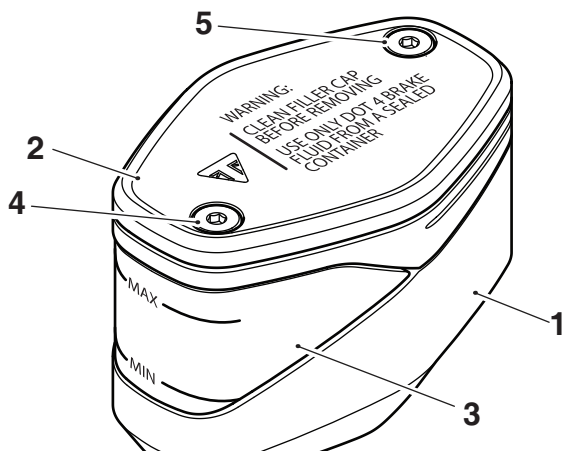
- Fill the fluid reservoir with new DOT 4 brake fluid and bleed the front brakes, as described in the Service Manual.
- To inspect the brake fluid level, check the level of fluid visible in the window on the fluid reservoir body.
- The brake fluid level must be between the upper and lower level lines with the reservoir held in a horizontal position, as shown below.



- Upper level line
- Lower level line
- Window

- Fit the diaphragm and diaphragm support into the fluid reservoir.

- Refit the reservoir cap onto the fluid reservoir. Refit the fixings with the M4 x 45 mm fixing closest to the reservoir fluid level window, as shown. Tighten the M4 x 45 mm fixing first to **1 Nm**, then tighten the M4 x 35 mm fixing to **1 Nm**.



- Fluid reservoir
- Reservoir cap
- Fluid level window
- Fixing, M4 x 45 mm
- Fixing, M4 x 35 mm

Warning

Always make sure the brake lever adjuster is returned to the original setting. Operating the motorcycle with lever settings which are unfamiliar may result in loss of motorcycle control and an accident.

- Make sure the brake lever adjuster is reset to the original setting.
- Examine the brake system for correct operation and fluid leaks. Rectify as necessary.
- Re-connect the battery, as described in the Service Manual.
- Refit the seat, as described in the Service Manual.

Warning

It is dangerous to operate the motorcycle with defective brakes. You must have your authorised Triumph dealer take remedial action before you ride the motorcycle again. Failure to take remedial action may result in reduced braking efficiency leading to loss of motorcycle control and an accident.

Warning

If, after fitment of this accessory kit, you have any doubt about the performance of any aspect of the motorcycle, contact an authorised Triumph dealer and do not ride the motorcycle until the authorised dealer has declared it fit for use. Riding a motorcycle when there is any doubt as to any aspect of the performance of the motorcycle may result in loss of motorcycle control and an accident.

Warning

The motorcycle must not be operated above the legal road speed limit except in closed-course conditions.

Warning

Only operate this Triumph motorcycle at high speed in closed-course, on-road competition or on closed-course racetracks. High-speed operation should only be attempted by riders who have been instructed in the techniques necessary for high-speed riding and are familiar with the motorcycle's characteristics in all conditions.

High-speed operation in any other circumstances is dangerous and may lead to loss of motorcycle control and an accident.