



## Accessory Fitting Instructions

Thank you for choosing this Triumph genuine accessory kit. This accessory kit is the product of Triumph's use of proven engineering, exhaustive testing, and continuous striving for superior reliability, safety and performance.

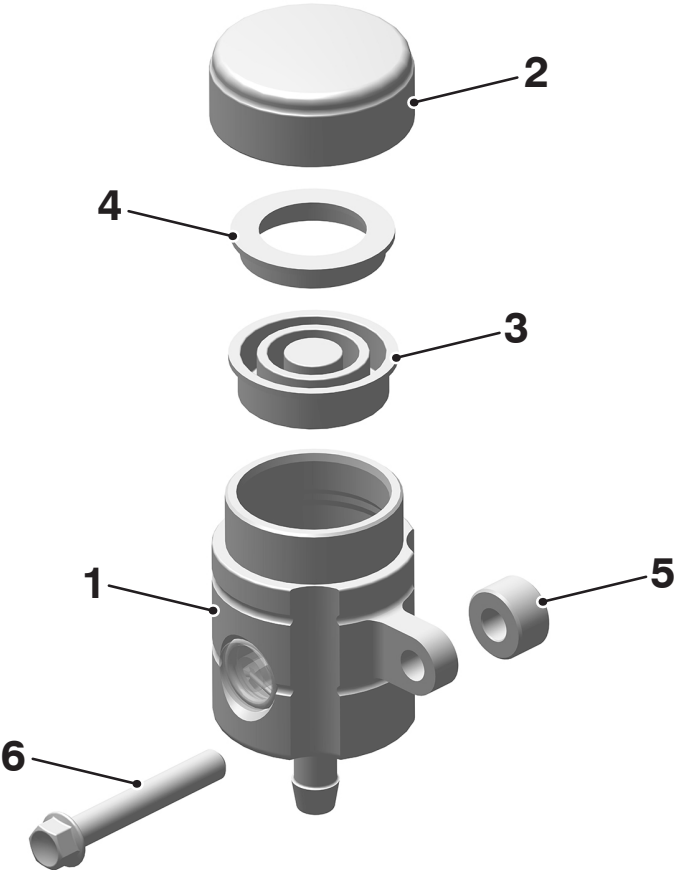
Completely read all of these instructions before commencing the installation of the accessory kit in order to become thoroughly familiar with the kit's features and the installation process.

These instructions should be considered a permanent part of your accessory kit, and should remain with it even if your accessory equipped motorcycle is subsequently sold.

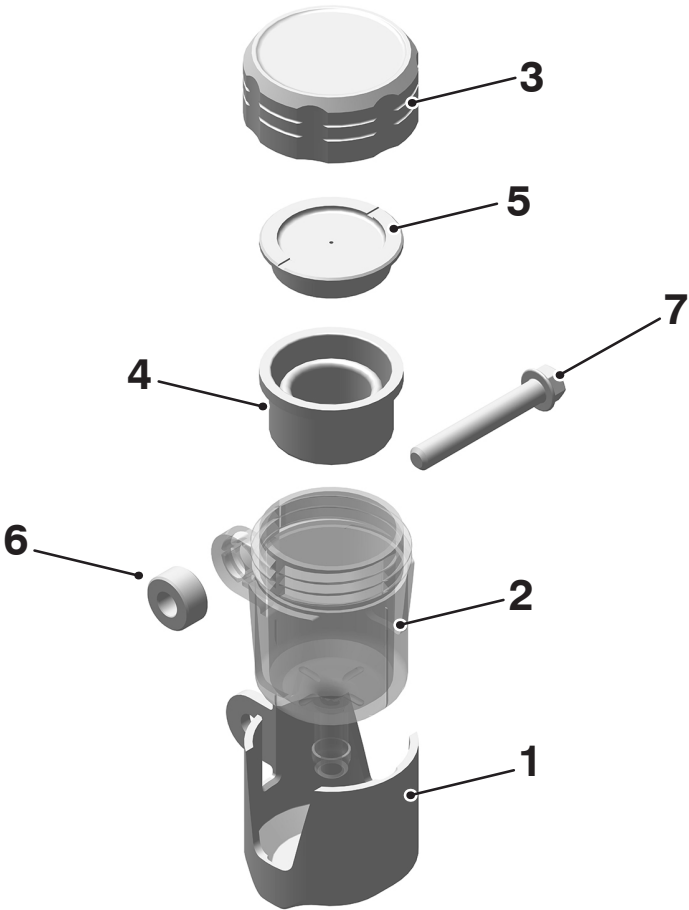
Rear Machined Brake Reservoir Kit	
Kit Number	Models
A9628055	Street Triple S up to VIN 967906, Street Triple S 660cc up to VIN 967906, Street Triple R from VIN 793032 up to VIN 982751, Street Triple RS up to VIN 966533
A9628264	Street Triple S 660cc from VIN 967907, Street Triple R from VIN 982752, Street Triple RS from VIN 966534, Speed Triple 1200 RS, Speed Triple 1200 RR, Daytona Moto2™ 765, Street Triple RS Moto2™
A9628271	Street Triple S 660cc from VIN 967907, Street Triple R from VIN 982752, Street Triple RS from VIN 966534, Speed Triple 1200 RS, Speed Triple 1200 RR, Daytona Moto2™ 765, Daytona 660, Street Triple RS Moto2™

Parts supplied

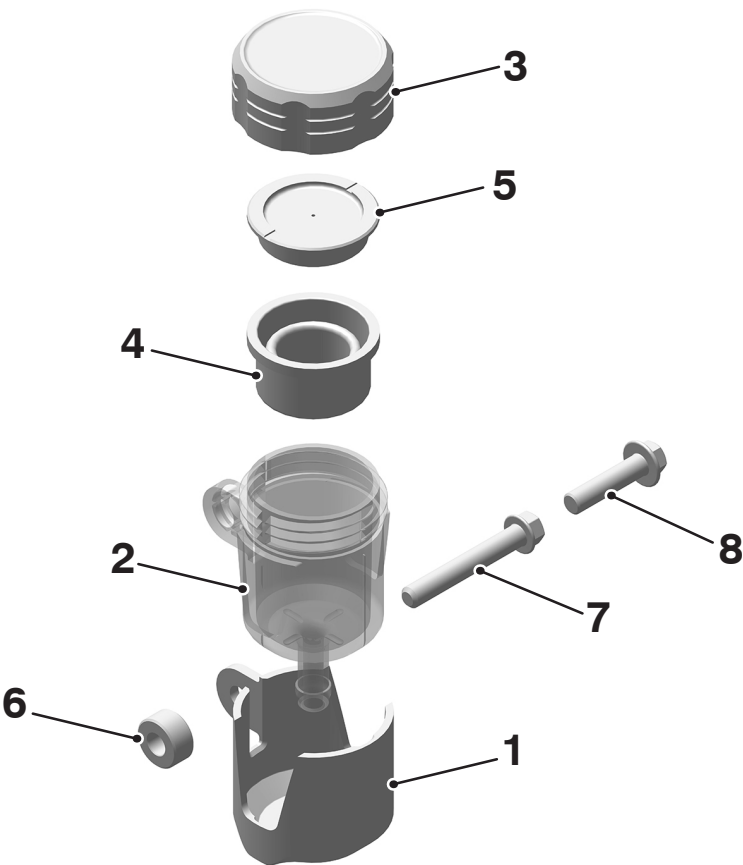
A9628055



1. Brake fluid reservoir	1 off	4. Diaphragm support ring	1 off
2. Reservoir cap	1 off	5. Spacer	1 off
3. Diaphragm	1 off	6. Fixing, M6 x 40 mm	1 off



1. Reservoir base	1 off	5. Diaphragm support	1 off
2. Brake fluid reservoir	1 off	6. Spacer	1 off
3. Reservoir cap	1 off	7. Fixing, M6 x 40 mm	1 off
4. Diaphragm	1 off		



1. Reservoir base	1 off	5. Diaphragm support	1 off
2. Brake fluid reservoir	1 off	6. Spacer	1 off
3. Reservoir cap	1 off	7. Fixing, M6 x 40 mm	1 off
4. Diaphragm	1 off	8. Fixing, M6 x 25 mm	1 off

### **⚠ WARNING**

Fit only genuine Triumph accessories to those models approved by Triumph as listed in the associated Triumph fitting instructions.

The accessory kits covered in this instruction are designed for use on specific models of Triumph motorcycle. The accessory kits and the models applicable are listed at the start of the instruction. They should never be fitted to any other Triumph model or to any other manufacturer's motorcycle.

Fitting an accessory kit to a Triumph model not listed, or to any other manufacturer's motorcycle, will affect the performance, stability and handling of the motorcycle.

Failure to follow the advice above may lead to loss of motorcycle control which could result in serious injury or death.

### **⚠ WARNING**

Always have Triumph approved parts, accessories and conversions fitted by a competent person with the specialist knowledge and technical understanding of motorcycles, such as an authorised Triumph dealer.

The fitment of parts, accessories and conversions by a person without the specialist knowledge and technical understanding of motorcycles may affect the handling, stability or other aspects of the motorcycle's operation.

Failure to follow the advice above may lead to loss of motorcycle control which could result in serious injury or death.

### **⚠ WARNING**

A torque wrench of known accurate calibration must be used when fitting this accessory kit.

Failure to tighten any of the fasteners to the correct torque specification may affect motorcycle performance, handling and stability.

Failure to follow the advice above may lead to loss of motorcycle control which could result in serious injury or death.

### **⚠ WARNING**

Make sure the motorcycle is stabilised and adequately supported.

Do not support the motorcycle on any ancillary component, the exhaust system or any other non structural parts of the motorcycle frame.

A correctly supported motorcycle will help prevent it from falling.

An unstable motorcycle may fall resulting in motorcycle damage, serious injury or death.

### **NOTICE**

Triumph offers a broad range of approved genuine accessories for your motorcycle.

We cannot therefore cover all possible equipment variations in these instructions. For removal and installation of Triumph Genuine Accessories, always refer to the instructions supplied with the respective accessory kit.

To obtain additional copies of any Triumph accessory instructions, visit [www.triumphinstructions.com](http://www.triumphinstructions.com) or contact your authorised Triumph dealer.

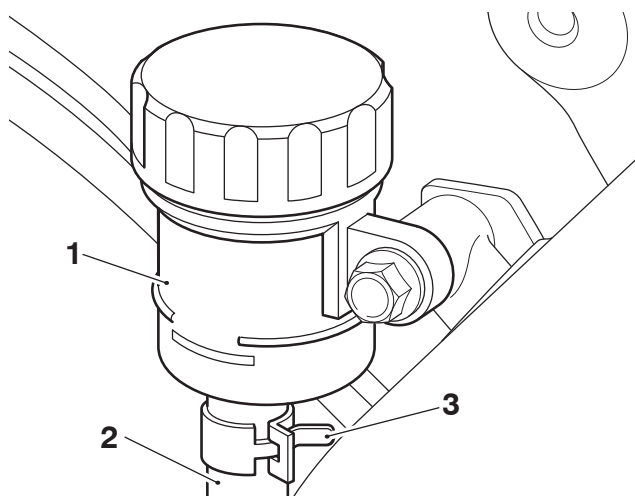
### **NOTICE**

To prevent paint damage, do not spill brake fluid onto any area of the bodywork.

Spilled brake fluid will damage paintwork.

## **Removal of the Rear Brake Reservoir**

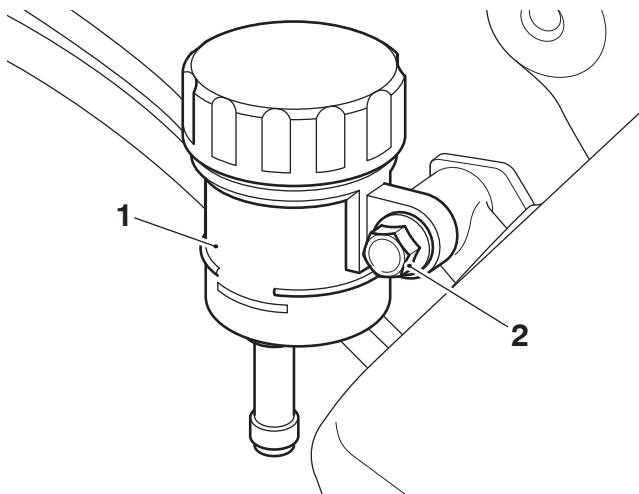
1. Remove the seat as described in the Service Manual.
2. Disconnect the battery as described in the Service Manual.
3. Note the position and orientation of the rear brake fluid reservoir.
4. To drain the brake fluid from the rear master cylinder, attach a tube to the rear brake caliper bleed nipple. Slacken the bleed nipple and allow the brake fluid to drain into a suitable container. Operate the brake until all fluid has been expelled from the master cylinder.
5. Remove the hose from the reservoir, placing a cloth under the hose and reservoir connection to absorb any remaining fluid which may be displaced. Do not remove the hose clip from the hose.



1. Fluid reservoir
2. Brake hose
3. Hose clip

**All Models Excluding Speed Triple 1200 RS, Speed Triple 1200 RR and Daytona 660**

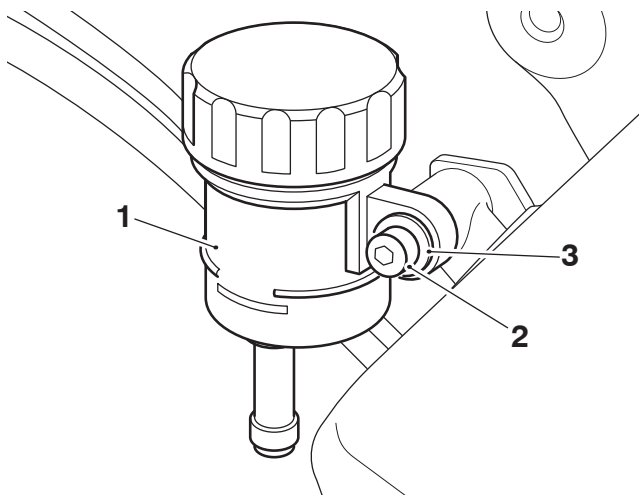
6. Remove the M6 fixing securing the fluid reservoir and remove the reservoir. Retain the fluid reservoir and washer (if fitted) for reuse if the motorcycle is to be returned to its original condition. Discard the fixing.



1. Fluid reservoir
2. Fixing

**Speed Triple 1200 RS and Speed Triple 1200 RR Models Only**

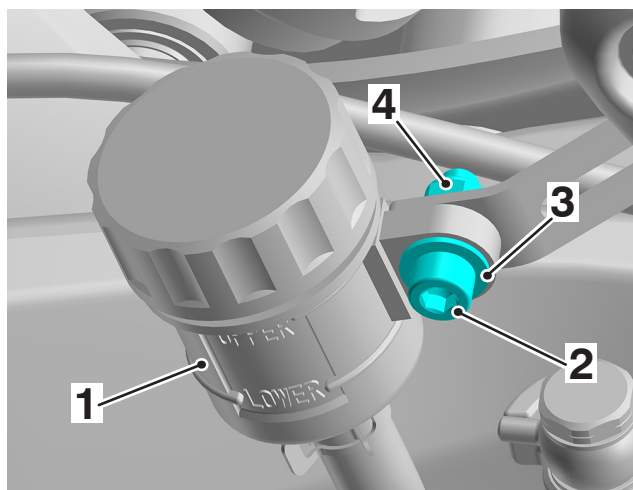
7. Remove the M6 fixing securing the fluid reservoir and remove the reservoir. Retain the fixing and washer for reuse. Retain the fluid reservoir for reuse if the motorcycle is to be returned to its original condition.



1. Fluid reservoir
2. Fixing
3. Washer

**Daytona 660 Models Only**

8. Remove the M6 fixing securing the fluid reservoir and remove the reservoir. Retain nut for reuse. Retain the fluid reservoir, fixing and washer for reuse if the motorcycle is to be returned to its original condition.



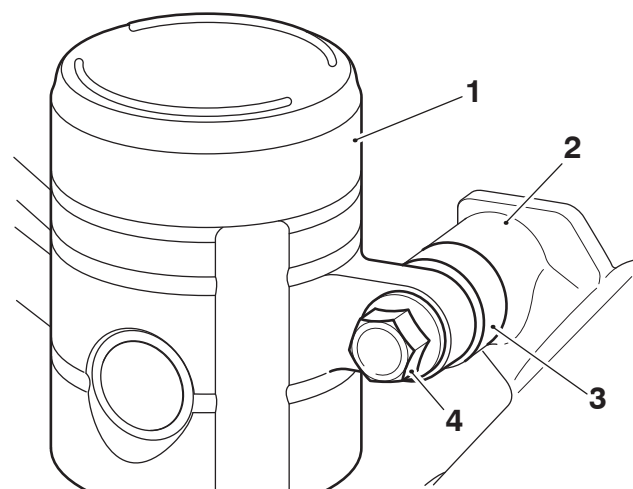
1. Fluid reservoir
2. Fixing
3. Washer
4. Nut

**Fitting the Machined Rear Brake Reservoir**

1. Locate the new fluid reservoir into position, making sure the position and orientation is the same as the original reservoir as noted on removal. Make sure the reservoir is held in a horizontal position when the motorcycle is upright.

**All Models Excluding Speed Triple 1200 RS, Speed Triple 1200 RR and Daytona 660**

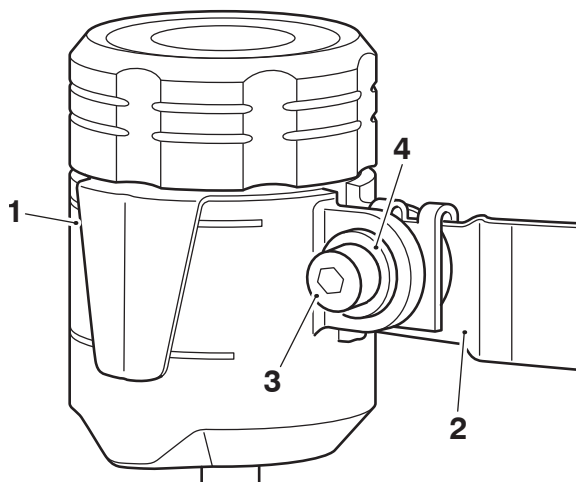
2. Fit the spacer from the kit between the reservoir mounting and motorcycle frame, as shown. Fit the M6 x 40 mm fixing and tighten to 6 Nm.



1. Fluid reservoir
2. Motorcycle frame
3. Spacer
4. Fixing, M6 x 40 mm

### Speed Triple 1200 RS and Speed Triple 1200 RR Models Only

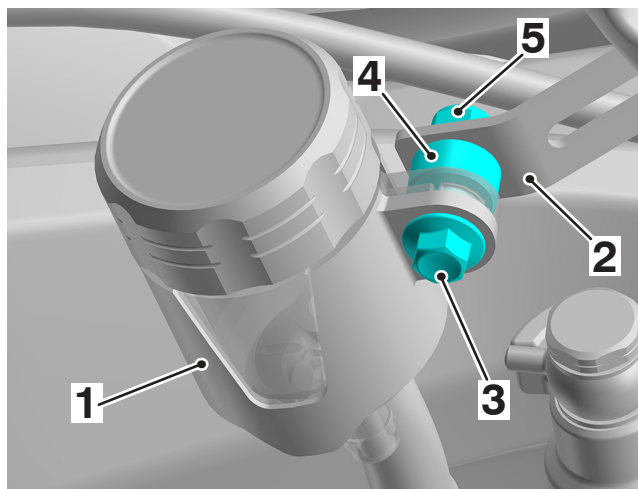
3. Fit the original fixing and washer, tighten the fixing to **4 Nm**. The M6 x 40 mm fixing and spacer in the kit can be discarded.



1. Fluid reservoir
2. Mounting bracket
3. Original fixing
4. Washer

### Daytona 660

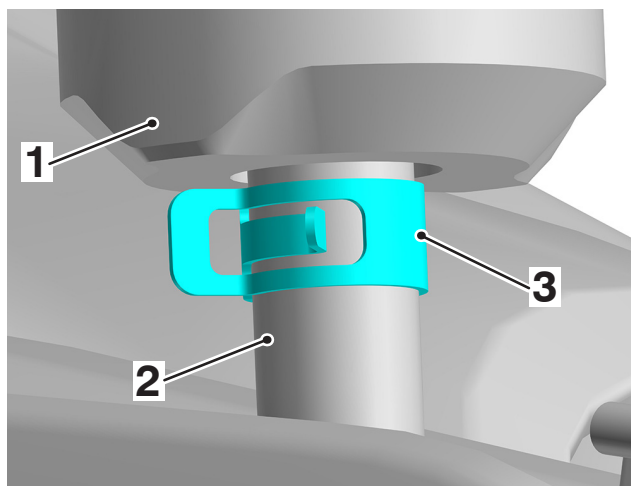
4. Collect the M6 x 25 mm fixing and spacer from the kit and secure the fluid reservoir to the mounting bracket using the original nut. Tighten the fixing to **3 Nm**.



1. Fluid reservoir
2. Mounting bracket
3. Fixing, M6 x 25 mm
4. Spacer
5. Nut

### All Models

5. Connect the brake fluid hose to the reservoir and secure with the original hose clip.



1. Fluid reservoir
2. Brake hose
3. Hose clip

### ⚠ WARNING

Brake fluid is hygroscopic which means it will absorb moisture from the air.

Only use DOT 4 brake fluid from a sealed container, do not mix different brands of brake fluid and never use brake fluid from an unsealed container or from one that has been previously opened. Any absorbed moisture will greatly reduce the boiling point of the brake fluid.

Moisture in the braking system may cause a reduction in braking efficiency leading to loss of motorcycle control which could result in serious injury or death.

### ⚠ WARNING

Always maintain absolute cleanliness when adding brake fluid to the brake fluid reservoir.

Do not allow moisture or debris to enter the reservoir as this will adversely affect the brake fluid properties.

Debris in the reservoir may cause a reduction in braking efficiency leading to loss of motorcycle control which could result in serious injury or death.

### **⚠ WARNING**

Check for fluid leakage around brake fittings, seals and joints.

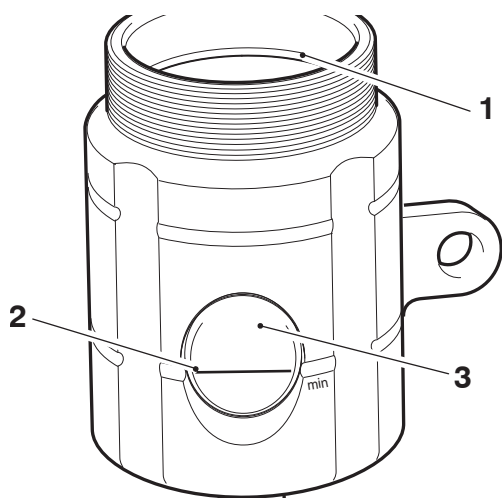
Leaks around fittings and joints may allow air to enter the braking system.

Air entering the braking system may cause a reduction in braking efficiency leading to loss of motorcycle control which could result in serious injury or death.

### **NOTICE**

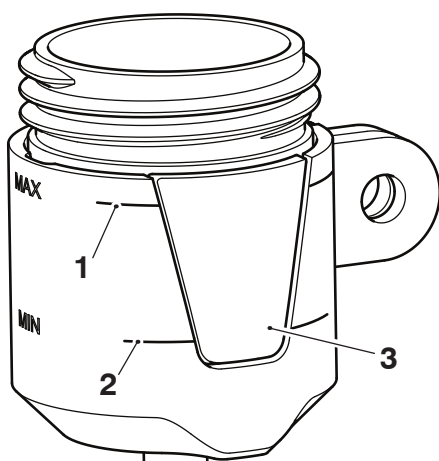
The brake fluid level must be between the upper and lower level lines with the reservoir held in a horizontal position, as shown below.

**A9628055**



- 1. Upper level line
- 2. Lower level line
- 3. Window

**A9628264 and A9628271**



- 1. Upper level line
- 2. Lower level line
- 3. Window

### **NOTICE**

To prevent paint damage, do not spill brake fluid onto any area of the bodywork.

Spilled brake fluid will damage paintwork.

6. Fill the fluid reservoir with new DOT 4 brake fluid and bleed the rear brake, as described in the Service Manual.
7. Fit the diaphragm and diaphragm support ring, or diaphragm support into the fluid reservoir.
8. Fit the new reservoir cap and carefully screw it down, making sure it is fully tightened.
9. Check the operation of the rear brake. Rectify as necessary.
10. Reconnect the battery as described in the Service Manual.
11. Refit the seat as described in the Service Manual.

### **⚠ WARNING**

It is dangerous to operate the motorcycle with defective brakes.

If a problem is detected or any doubt exists, the brakes must be inspected by a competent person with the specialist knowledge and technical understanding of motorcycles, such as an authorised Triumph dealer.

Operation of the motorcycle with defective brakes may lead to loss of motorcycle control which could result in serious injury or death.

### **⚠ WARNING**

After fitting the accessory kit the motorcycle will exhibit new handling characteristics.

Operate the motorcycle in a safe area free from traffic to gain familiarity with any new characteristics.

Operation of the motorcycle when not familiar with any new handling characteristics may lead to loss of motorcycle control which could result in serious injury or death.

### **⚠ WARNING**

If, after fitting this accessory kit, you have any doubt about the performance of any aspect of the motorcycle, contact a competent person with the specialist knowledge and technical understanding of motorcycles, such as an authorised Triumph dealer.

Riding a motorcycle when there is any doubt as to any aspect of the performance of the motorcycle may lead to loss of motorcycle control which could result in serious injury or death.



---

**⚠ WARNING**

Never ride an accessory-equipped motorcycle at speeds above 80 mph (130 km/h).

Remember that the 80 mph (130 km/h) limit will be reduced by the fitting of non-approved accessories, incorrect loading, worn tyres, overall motorcycle condition and poor road or weather conditions.

The presence of accessories will cause changes in the stability and handling of the motorcycle. Failure to allow for changes in motorcycle stability may lead to loss of motorcycle control which could result in serious injury or death.

**⚠ WARNING**

High-speed operation should only be attempted by riders who have been instructed in the techniques necessary for high-speed riding and are familiar with the motorcycle's characteristics in all conditions.

Only operate this Triumph motorcycle at high speed in closed-course, on-road competition or on closed-course racetracks.

High-speed operation in any other circumstances is dangerous and may lead to loss of motorcycle control which could result in serious injury or death.

**NOTICE**

The motorcycle must not be operated above the legal road speed limit except in closed-course conditions.