



Accessory Fitting Instructions

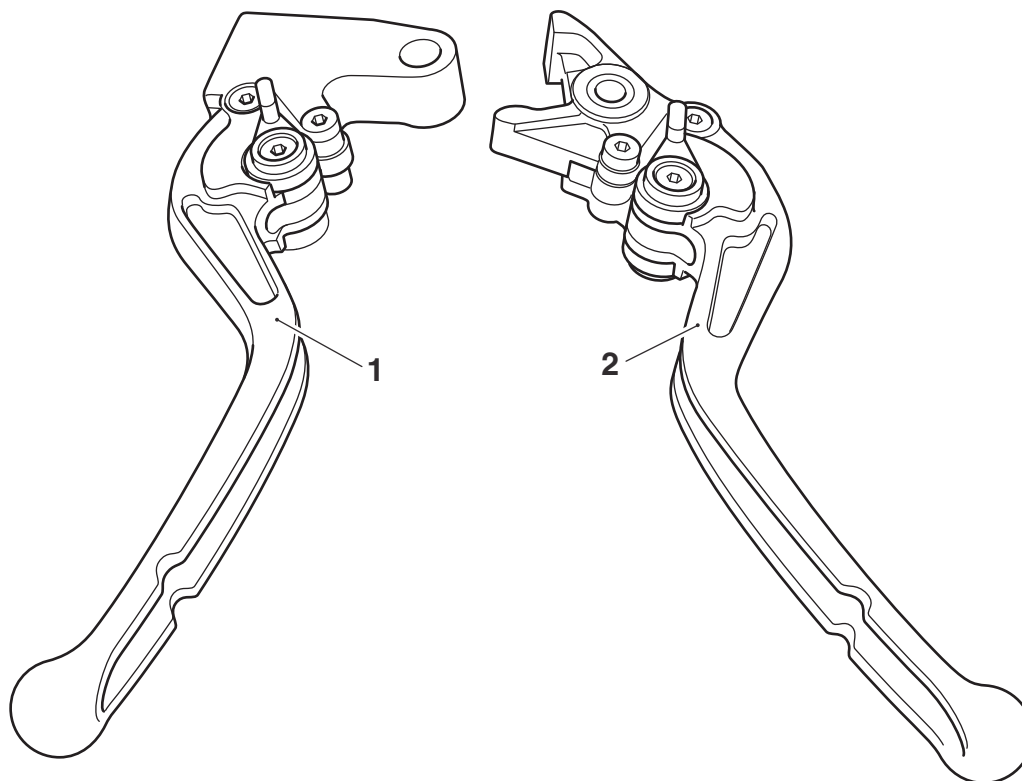
Machined Lever Kit	
Kit Number	Models Affected
A9620028	Tiger Sport up to VIN 750469, Tiger 1050, Sprint GT 1050, Sprint 1050, Sprint 1050 with ABS, Street Triple up to VIN 798271
A9620030	Tiger Sport up to VIN 750469, Tiger 1050, Sprint GT 1050, Sprint 1050, Sprint 1050 with ABS, Street Triple up to VIN 798271
A9620037	Tiger 800, Tiger 800 with ABS, Tiger 800XC up to VIN 674841, Sprint GT 1050, Sprint 1050, Sprint 1050 with ABS, Street Triple up to VIN 798271, Tiger 1050
A9620038	Tiger 800, Tiger 800 with ABS, Tiger 800XC up to VIN 674841, Sprint GT 1050, Sprint 1050, Sprint 1050 with ABS, Street Triple up to VIN 798271, Tiger 1050
A9620043	Tiger Sport up to VIN 750469
A9620045	Tiger 800 XR _x , Tiger 800 XC _x , Tiger 800 XR, Tiger 800 XC from VIN 674842, Tiger 800 XR _T , Tiger 800 XCA, Tiger Sport from VIN 750470 up to VIN AD1190
A9628053	Street Twin, Speed Twin 900, Street Scrambler from VIN 914448, Scrambler 900, Bonneville T120, Thruxton 1200
A9628054	Street Twin to VIN 914972, Street Cup, Street Scrambler up to VIN 910740, Bonneville T100 from VIN 759204, Bonneville T120, Bonneville T120 Black, Thruxton 1200
A9620062	Street Triple S, Street Triple S 660cc, Street Triple R from VIN 982752 to VIN BF0949
A9620086	Tiger 800 XR, Tiger 800 XR _x , Tiger 800 XC _x , Tiger 800 XR _T , Tiger 800 XCA, Tiger 800 XR _x LRH
A9628062 A9628162	Street Triple S, Street Triple S 660cc, Street Triple R from VIN 982752

Thank you for choosing this Triumph genuine accessory kit. This accessory kit is the product of Triumph's use of proven engineering, exhaustive testing, and continuous striving for superior reliability, safety and performance.

Completely read all of these instructions before commencing the installation of the accessory kit in order to become thoroughly familiar with the kit's features and the installation process.

These instructions should be considered a permanent part of your accessory kit, and should remain with it even if your accessory equipped motorcycle is subsequently sold.

Parts supplied



cgec

1. Lever, clutch	1 off	2. Lever, brake	1 off
------------------	-------	-----------------	-------

! Warning

Fit only genuine Triumph accessories to those models approved by Triumph as listed in the associated Triumph fitting instructions. The accessory kits covered in this instruction are designed for use on specific models of Triumph motorcycle. The accessory kits and the models applicable are listed at the start of the instruction. They should never be fitted to any other Triumph model or to any other manufacturer's motorcycle. Fitting an accessory kit to a Triumph model not listed, or to any other manufacturer's motorcycle will affect the performance, stability and handling of the motorcycle. This may affect the rider's ability to control the motorcycle and could result in an accident causing severe injuries or death.

! Warning

Always have Triumph approved parts, accessories and conversions fitted by a trained technician of an authorised Triumph dealer. The fitment of parts, accessories and conversions by a technician who is not of an authorised Triumph dealer may affect the handling, stability or other aspects of the motorcycle's operation which may result in loss of motorcycle control and an accident.

! Warning

Make sure the motorcycle is supported. A correctly supported motorcycle will help prevent it from falling. An unstable motorcycle may fall, causing injury to the operator or damage to the motorcycle.



Warning

A torque wrench of known accurate calibration must be used when fitting this accessory kit. Failure to tighten any of the fasteners to the correct torque specification may affect motorcycle performance, handling and stability. This may result in loss of motorcycle control and an accident.

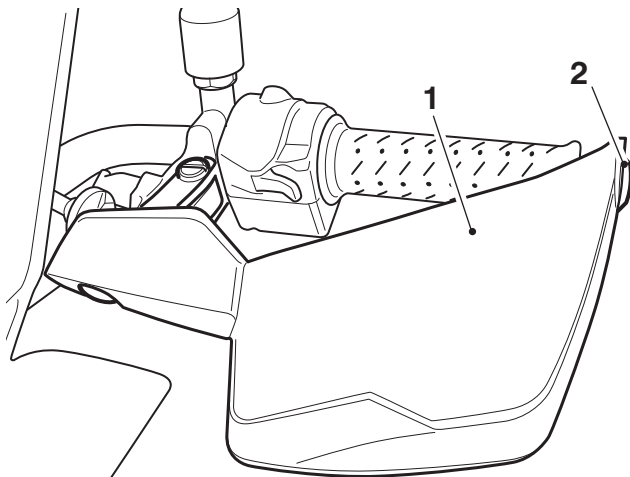
Note:

- **Triumph offers a broad range of approved genuine accessories for your motorcycle. We cannot therefore cover all possible equipment variations in these instructions. For removal and installation of Triumph Genuine Accessories, always refer to the instructions supplied with the respective accessory kit. To obtain additional copies of any Triumph accessory instructions, visit www.triumphinstructions.com or contact your authorised Triumph dealer.**

Models with Handguards

Note:

- **If the handguard fixing is encapsulated, discard the fixing.**
1. Remove the fixings securing the handguards to the handlebar ends.



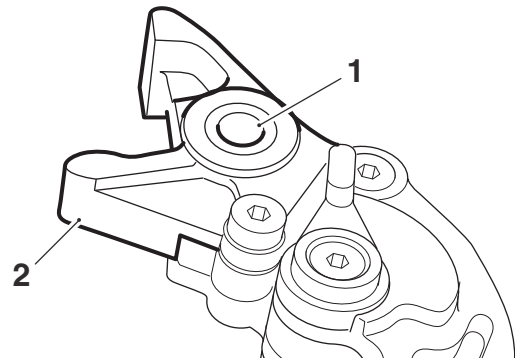
T0891

1. Handguard, Tiger 800 left hand shown
2. Fixing

All Models

Brake Lever

2. Remove the lock nut and pivot bolt from the front brake lever, remove the lever and if fitted remove the handguard.
3. Retain the pivot bolt and lock nut for reuse.
4. Retain the front brake lever if the motorcycle is to be returned to its original condition.
5. Lightly lubricate the following parts of the adjustable brake lever with Castrol Red Rubber Grease:
 - Internal surface of the pivot hole
 - Surface area that contacts the master cylinder.



1. Pivot hole
2. Surface that contacts the master cylinder



Caution

When aligning the handguard bracket (if fitted) and brake lever to the master cylinder bracket, care must be taken to make sure that the brake lever is correctly positioned against the brake switch. A brake lever that is incorrectly positioned may damage the brake switch plunger, causing failure of the brake switch. An inoperative or incorrectly functioning brake switch will prevent operation of the brake light, cruise control and riding mode functions.

Note:

- **For models with handguards, fit the handguard mounting bracket with the pivot bolt.**
6. Refit the pivot bolt and tighten to **1 Nm** then, while holding the bolt, refit the lock nut and tighten to **6 Nm**.
Self-locking nuts can be reused, providing resistance can be felt when the locking portion passes over the thread of the bolt or stud.
Always use the correct replacement self-locking nut as recommended in the Triumph parts catalogue.
 7. Check the operation of the front brake and brake light. Rectify as necessary.



Warning

Check for the correct operation of the brake lever before riding the motorcycle. Riding the motorcycle without first checking the correct operation of the brake lever could lead to loss of motorcycle control and an accident.

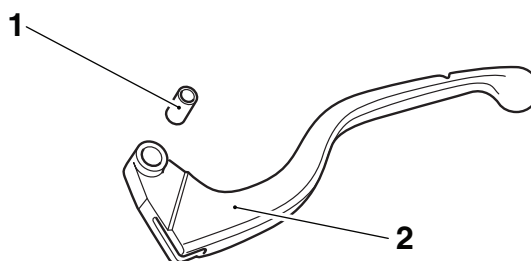


Warning

It is dangerous to operate the motorcycle with defective brakes; you must have your authorised Triumph dealer take remedial action before you attempt to ride the motorcycle again. Failure to take remedial action may reduce braking efficiency leading to loss of motorcycle control and an accident.

Clutch Lever

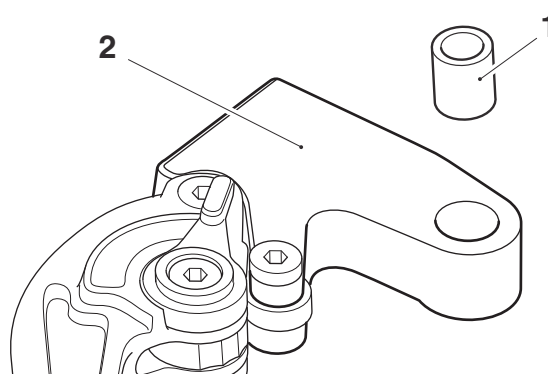
1. Loosen the clutch cable and detach it from the clutch lever as described in the Service Manual.
2. Loosen the bolts securing the clamp to the clutch lever assembly.
3. Remove the lock nut and pivot bolt from the clutch lever, remove the lever and if fitted remove the handguard.
4. Retain the pivot bolt and lock nut for reuse.
5. Remove the collar from the clutch lever and retain for reuse.



aatj_1

1. Collar
2. Clutch lever

6. Retain the clutch lever if the motorcycle is to be returned to its original condition.
7. Lightly lubricate the collar with Castrol Red Rubber Grease.
8. Fit the collar to the adjustable clutch lever.



1. Collar
2. Adjustable clutch lever



Caution

When aligning the handguard bracket (if fitted) and clutch lever to the clutch lever bracket, care must be taken to make sure that the clutch lever is correctly positioned against the clutch switch. A clutch lever that is incorrectly positioned may damage the clutch switch plunger, causing failure of the clutch switch. An inoperative or incorrectly functioning clutch switch may prevent the motorcycle from starting or prevent operation of the cruise control and riding mode functions.

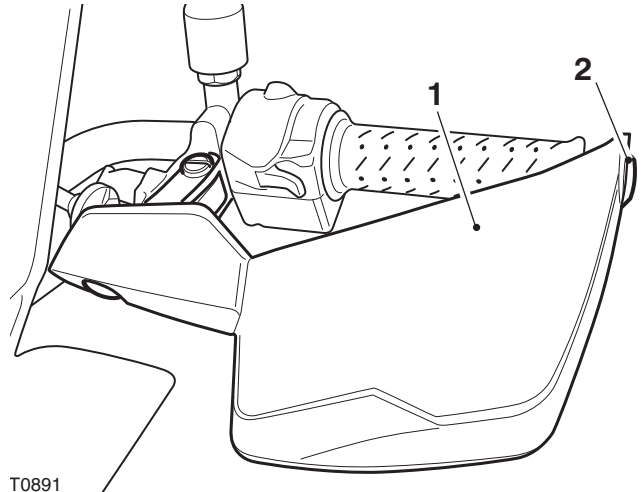
Note:

- **For models with handguards, fit the handguard mounting bracket with the pivot bolt.**
9. Position the adjustable clutch lever to its mounting bracket on the handlebar.
 10. Refit the pivot bolt, refit the lock nut and tighten to **3.5 Nm**.
Self-locking nuts can be reused, providing resistance can be felt when the locking portion passes over the thread of the bolt or stud. Always use the correct replacement self-locking nut as recommended in the Triumph parts catalogue.
 11. Align the split line of the clutch lever mounting bracket with the punch mark on the handlebar, then tighten the clamp bolts, upper first, to **12 Nm**.
 12. Refit and adjust the clutch cable as described in the Service Manual.

Models with Handguards

Note:

- **If the handguard original fixing was encapsulated, fit a new encapsulated fixing.**
13. Secure the handguard to the handlebar end and tighten the fixing to:
 - Tiger 800XC - **6 Nm**.
 - Tiger 1050 and Tiger Sport - **5 Nm**.



T0891

1. Handguard, Tiger 800 left hand shown
2. Fixing



Warning

Move the handlebars to left and right full lock while checking that the handguards do not restrict full lock operation. Check cables or harnesses do not bind or restrict full lock operation. Any component, cables or harnesses that will restrict the steering may cause loss of control of the motorcycle and an accident.

Adjustment

1. Adjust the lever to the required position by pushing the lever forward and moving the adjuster lever to align with one of the numbered positions. The distance from the hand grip to the released lever is shortest when set to number one and longest when set to number six.



Warning

Do not attempt to adjust the levers with the motorcycle in motion as this may lead to loss of motorcycle control and an accident.

After adjusting the levers, operate the motorcycle in an area free from traffic to gain familiarity with the new settings. Do not loan your motorcycle to anyone as they may change the lever settings from the one you are familiar with possibly causing loss of control and an accident.

Models with Cruise Control

1. Carry out a cruise control switch check as described in the Service Manual.



Warning

The front brake and clutch switches are an integral part of the cruise control system. To make sure the brake switches, brake light and clutch switch function correctly, the cruise control switch test must be carried out as described in the Service Manual.

Failure to carry out the cruise control switch test may result in loss of motorcycle control and an accident.



Warning

After fitting the accessory kit the motorcycle will exhibit new handling characteristics. Operate the motorcycle in a safe area free from traffic to gain familiarity with any new characteristics. Operation of the motorcycle when not familiar with any new handling characteristics may result in loss of motorcycle control and an accident.



Warning

If, after fitting this accessory kit, you have any doubt about the performance of any aspect of the motorcycle, contact an authorised Triumph dealer and do not ride the motorcycle until the authorised dealer has declared it fit for use. Riding a motorcycle when there is any doubt as to any aspect of the performance of the motorcycle may result in loss of motorcycle control and an accident.



Warning

Never ride an accessory-equipped motorcycle at speeds above 80 mph (130 km/h).

The presence of accessories will cause changes in the stability and handling of the motorcycle. Failure to allow for changes in motorcycle stability may result in loss of motorcycle control and an accident.

Remember that the 80 mph (130 km/h) limit will be reduced by the fitting of non-approved accessories, incorrect loading, worn tyres, overall motorcycle condition and poor road or weather conditions.



Warning

The motorcycle must not be operated above the legal road speed limit except in closed-course conditions.



Warning

Only operate this Triumph motorcycle at high speed in closed-course, on-road competition or on closed-course racetracks. High-speed operation should only be attempted by riders who have been instructed in the techniques necessary for high-speed riding and are familiar with the motorcycle's characteristics in all conditions.

High-speed operation in any other circumstances is dangerous and may result in loss of motorcycle control and an accident.