



Accessory Fitting Instructions

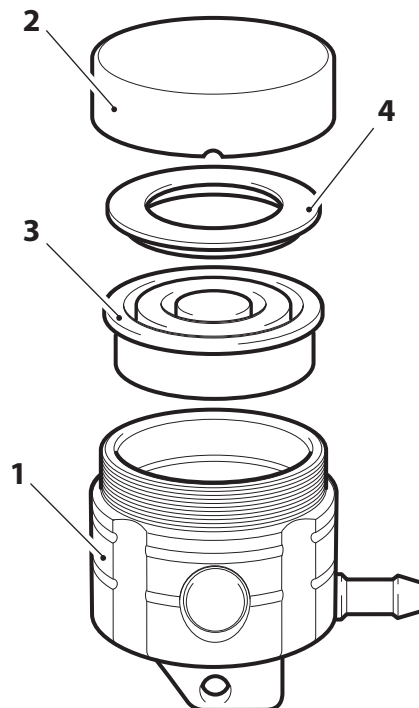
| Front Machined Brake Reservoir Kit | |
|------------------------------------|--|
| Kit Number | Models Affected |
| A9620057, A9628043, T2025066 | Street Twin, Speed Twin 900, Street Cup, Street Scrambler, Scrambler 900, Street Triple Rx, Street Triple R, Daytona 675, Sprint ST 1050, Sprint GT 1050, Tiger 1050, Tiger Sport, Scrambler, Bonneville and Bonneville SE |
| A9620119 | Street Twin from VIN 914973, Speed Twin 900, Street Scrambler from VIN 914448, Scrambler 900 |

Thank you for choosing this Triumph genuine accessory kit. This accessory kit is the product of Triumph's use of proven engineering, exhaustive testing, and continuous striving for superior reliability, safety and performance.

Completely read all of these instructions before commencing the installation of the accessory kit in order to become thoroughly familiar with the kit's features and the installation process.

These instructions should be considered a permanent part of your accessory kit, and should remain with it even if your accessory-equipped motorcycle is subsequently sold.

Parts Supplied



| | | | |
|--------------------------|-------|---------------------------|-------|
| 1. Brake fluid reservoir | 1 off | 3. Diaphragm | 1 off |
| 2. Reservoir cap | 1 off | 4. Diaphragm support ring | 1 off |



Warning

Fit only genuine Triumph accessories to those models approved by Triumph as listed in the associated Triumph fitting instructions. The accessory kits covered in this instruction are designed for use on specific models of Triumph motorcycle. The accessory kits and the models applicable are listed at the start of the instruction. They should never be fitted to any other Triumph model or to any other manufacturer's motorcycle. Fitting an accessory kit to a Triumph model not listed, or to any other manufacturer's motorcycle will affect the performance, stability and handling of the motorcycle. This may affect the rider's ability to control the motorcycle and could result in an accident causing severe injuries or death.



Warning

Always have Triumph approved parts, accessories and conversions fitted by a trained technician of an authorised Triumph dealer. The fitment of parts, accessories and conversions by a technician who is not of an authorised Triumph dealer may affect the handling, stability or other aspects of the motorcycle's operation which may result in loss of motorcycle control and an accident.



Warning

Make sure the motorcycle is supported. A correctly supported motorcycle will help prevent it from falling. An unstable motorcycle may fall, causing injury to the operator or damage to the motorcycle.



Warning

A torque wrench of known accurate calibration must be used when fitting this accessory kit. Failure to tighten any of the fasteners to the correct torque specification may affect motorcycle performance, handling and stability. This may result in loss of motorcycle control and an accident.

Note:

- **Triumph offers a broad range of approved genuine accessories for your motorcycle. We cannot therefore cover all possible equipment variations in these instructions. For removal and installation of Triumph Genuine Accessories, always refer to the instructions supplied with the respective accessory kit. To obtain additional copies of any Triumph accessory instructions, visit www.triumphinstructions.com or contact your authorised Triumph dealer.**

Note:

- **Make sure that a relevant Triumph Service Manual is available for reference during the fitting of this accessory kit.**

1. Remove the seat as described in the Service Manual.
2. Disconnect the battery as described in the Service Manual.
3. Note the position and orientation of the original master cylinder fluid reservoir.
4. Note the setting on the brake lever adjuster to make sure it is returned to the same position when the master cylinder fluid reservoir replacement procedure has been completed.



Caution

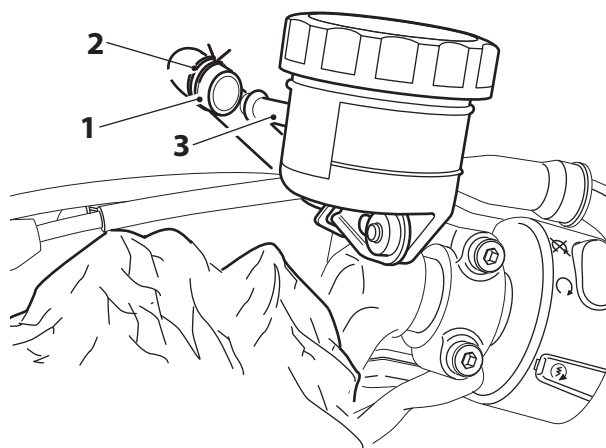
To prevent damage, make sure that any displaced brake fluid does not come into contact with any part of the bodywork.

5. To drain the brake fluid from the master cylinder, attach a tube to the right hand brake caliper bleed nipple. Slacken the bleed nipple and allow the brake fluid to drain into a suitable container. Operate the brake lever until all fluid has been expelled from the master cylinder.

Note:

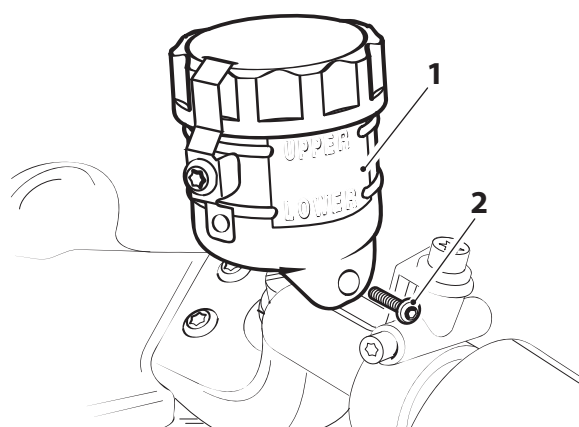
- **Note the position and orientation of the retaining clip for the brake fluid hose.**

- Detach the brake fluid hose and its retaining clip from the reservoir, placing a cloth under the hose and reservoir connection to absorb any remaining fluid which may be displaced.



- Brake fluid hose
- Retaining clip
- Reservoir spigot

- Remove the M6 fixing securing the fluid reservoir to the master cylinder and remove the fluid reservoir. Retain the fixing for reuse. Retain the fluid reservoir if the motorcycle is to be returned to its original condition.



- Fluid reservoir
- Fixing

Note:

- Note the position and orientation of the reservoir hose spigot.

- Locate the new fluid reservoir onto the master cylinder, making sure the position and orientation is the same as the original reservoir, as noted on removal.
- Secure the new fluid reservoir to the master cylinder with the original fixing.
- Tighten the fixing to **5 Nm**.
- Fit the hose to the front brake fluid reservoir. Make sure that the hose is fully on the spigot and secure with the retaining clip as noted for removal.

Warning

Brake fluid is hygroscopic which means it will absorb moisture from the air. Only use DOT 4 brake fluid from a sealed container, do not mix different brands of brake fluid and never use brake fluid from an unsealed container or from one that has been previously opened. Any absorbed moisture will greatly reduce the boiling point of the brake fluid. Moisture in the braking system may cause a reduction in braking efficiency leading to loss of motorcycle control and an accident.

Warning

Always maintain absolute cleanliness when adding brake fluid to the brake fluid reservoir. Do not allow moisture or debris to enter the reservoir as this will adversely affect the brake fluid properties. This may cause a reduction in braking efficiency leading to loss of motorcycle control and an accident.

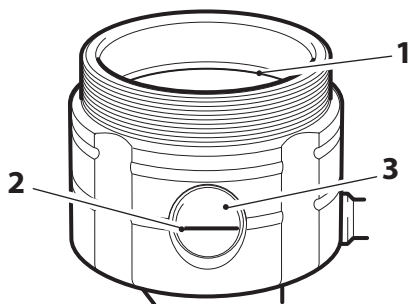
Warning

Check for fluid leakage around brake fittings, seals and joints. Leaks around fittings and joints may allow air to enter the braking system. Air entering the braking system may cause a reduction in braking efficiency leading to loss of motorcycle control and an accident.

Caution

To prevent damage, make sure that any displaced brake fluid does not come into contact with any part of the bodywork.

12. Fill the fluid reservoir with new DOT 4 brake fluid and bleed the front brakes, as described in the Service Manual.
13. To inspect the brake fluid level, check the level of fluid visible in the window on the fluid reservoir body.
14. The brake fluid level must be between the upper and lower level lines with the reservoir held in a horizontal position, as shown below.



1. Upper level line
2. Lower level line
3. Window

Note:

- **The diaphragm support ring may be supplied assembled into the reservoir cap. In this instance there is no need to remove the diaphragm support ring from the reservoir cap in order to fit the diaphragm**
15. Fit the diaphragm onto the diaphragm support ring.
 16. Fit the reservoir cap on to the fluid reservoir with the diaphragm and diaphragm support ring between the fluid reservoir cap and the fluid reservoir.
 17. Carefully screw the reservoir cap down, making sure it is fully tightened.



Warning

Always return the brake lever adjuster to the original setting. Operating the motorcycle with lever settings which are unfamiliar may result in loss of motorcycle control and an accident.

18. Reset the brake lever adjuster to the original setting.
19. Examine the brake system for correct operation and fluid leaks. Rectify as necessary.
20. Reconnect the battery, positive (red) lead first.
21. Refit the seat as described in the Service Manual.



Warning

It is dangerous to operate the motorcycle with defective brakes; you must have your authorised Triumph dealer take remedial action before you ride the motorcycle again. Failure to take remedial action may result in reduced braking efficiency may result in loss of motorcycle control and an accident.



Warning

If, after fitting this accessory kit, you have any doubt about the performance of any aspect of the motorcycle, contact an authorised Triumph dealer and do not ride the motorcycle until the authorised dealer has declared it fit for use. Riding a motorcycle when there is any doubt as to any aspect of the performance of the motorcycle may result in loss of motorcycle control and an accident.



Warning

Never ride an accessory-equipped motorcycle at speeds above 80 mph (130 km/h).

The presence of accessories will cause changes in the stability and handling of the motorcycle. Failure to allow for changes in motorcycle stability may result in loss of motorcycle control and an accident.

Remember that the 80 mph (130 km/h) limit will be reduced by the fitting of non-approved accessories, incorrect loading, worn tyres, overall motorcycle condition and poor road or weather conditions.



Warning

Only operate this Triumph motorcycle at high speed in closed-course, on-road competition or on closed-course racetracks. High-speed operation should only be attempted by riders who have been instructed in the techniques necessary for high-speed riding and are familiar with the motorcycle's characteristics in all conditions.

High-speed operation in any other circumstances is dangerous and may result in loss of motorcycle control and an accident.



Warning

The motorcycle must not be operated above the legal road speed limit except in closed-course conditions.