

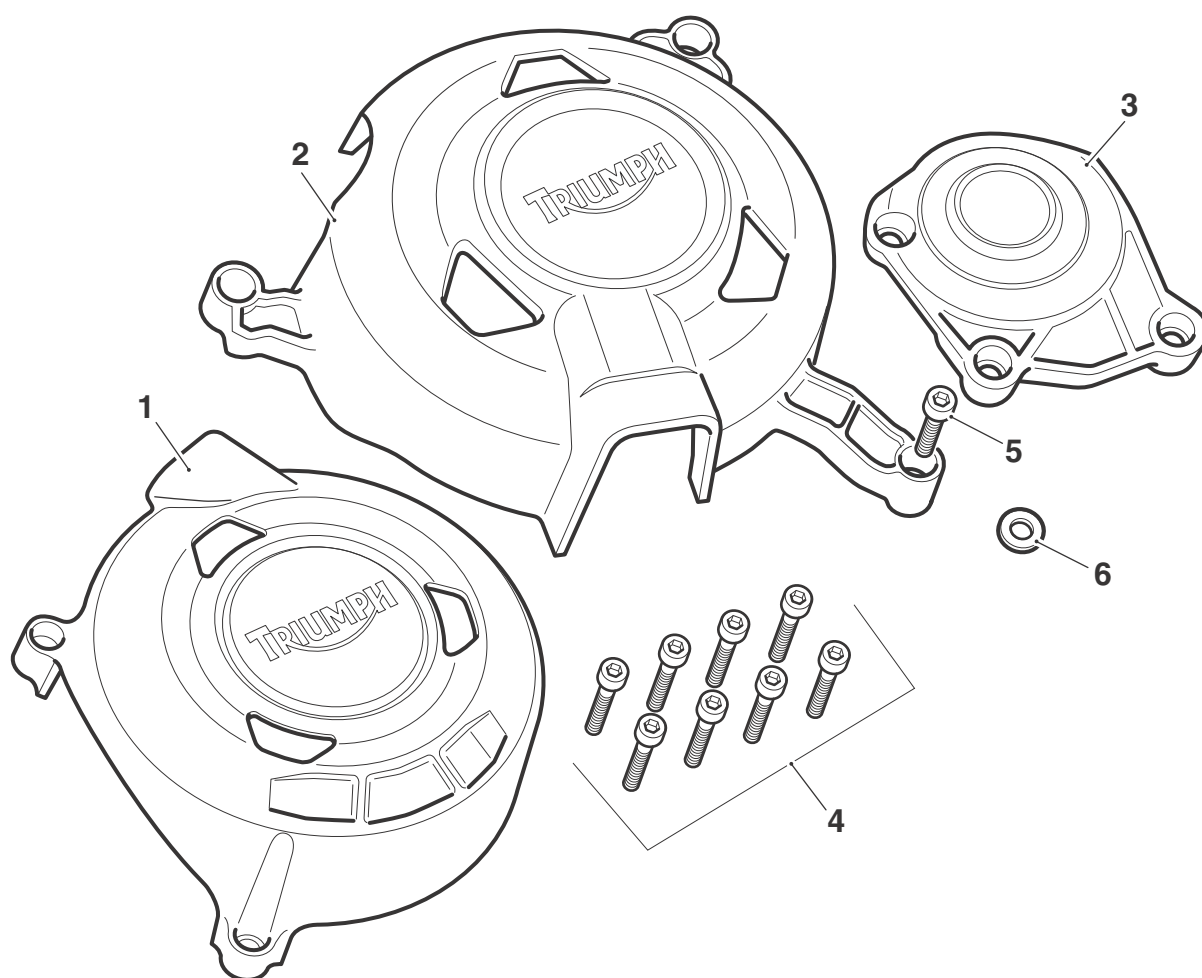
Fitting Instructions:

Street Triple Rx, Daytona 675R up to VIN 564947, Street Triple from VIN 480782 and Street Triple R from VIN 482182 A9618171

Thank you for choosing this Triumph genuine accessory kit. This accessory kit is the product of Triumph's use of proven engineering, exhaustive testing, and continuous striving for superior reliability, safety and performance.

Completely read all of these instructions before commencing the installation of the accessory kit in order to become thoroughly familiar with the kit's features and the installation process.

These instructions should be considered a permanent part of your accessory kit, and should remain with it even if your accessory-equipped motorcycle is subsequently sold.



T0976

Parts Supplied:

1. Alternator cover protector	1 off	4. Screw, M6 x 30 mm	8 off
2. Clutch cover protector	1 off	5. Screw, M6 x 20 mm	1 off
3. Crankshaft cover protector	1 off	6. Washer, M6	1 off



Warning

This accessory kit is designed for use on Triumph Street Triple Rx, Daytona 675R up to VIN 564947, Street Triple from VIN 480782 and Street Triple R from VIN 482182 motorcycles only and should not be fitted to any other Triumph model or to any other manufacturer's motorcycle. Fitting this accessory kit to any other Triumph model or to any other manufacturer's motorcycle will affect the performance, stability and handling of the motorcycle. This may affect the rider's ability to control the motorcycle and could cause an accident.



Warning

Always have Triumph approved parts, accessories and conversions fitted by a trained technician of an authorised Triumph dealer. The fitment of parts, accessories and conversions by a technician who is not of an authorised Triumph dealer may affect the handling, stability or other aspects of the motorcycle's operation which may result in loss of motorcycle control and an accident.



Warning

Throughout this operation, ensure that the motorcycle is stabilised and adequately supported to prevent risk of injury from the motorcycle falling.



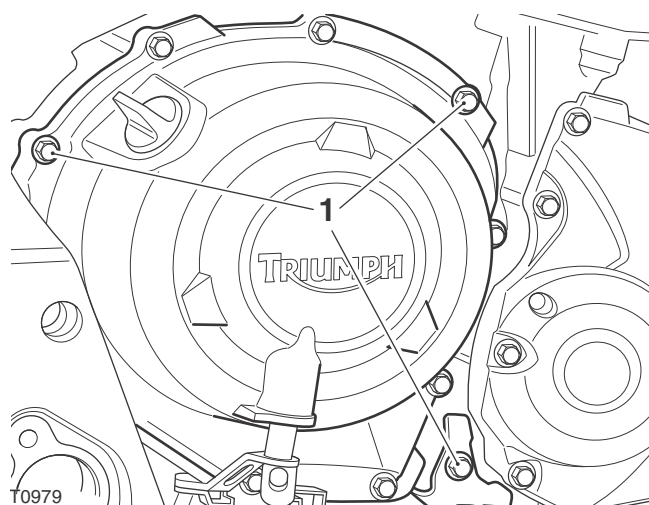
Warning

A torque wrench of known accurate calibration must be used when fitting this accessory kit. Failure to tighten any of the fasteners to the correct torque specification may affect motorcycle performance, handling and stability. This may result in loss of motorcycle control and an accident.

1. Using a mixture of cold water and mild automotive cleaner, clean the surfaces of the following covers and the inside surface of each corresponding cover protector:
 - Alternator cover;
 - Clutch cover;
 - Crankshaft cover.
2. **Daytona 675R only:** Remove left and right hand lower fairings as described in the Service Manual.

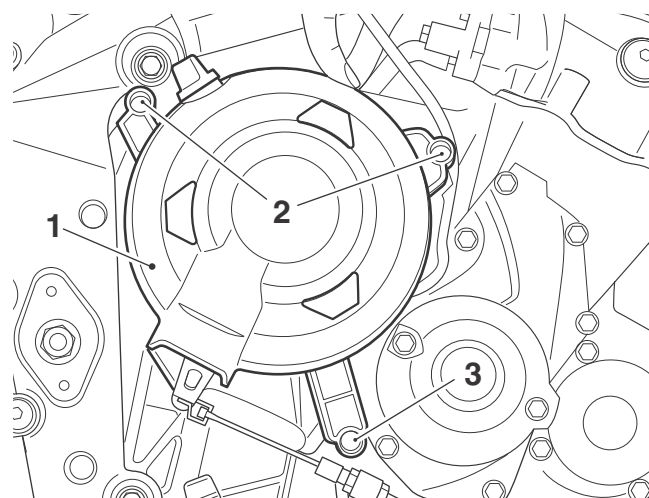
Clutch Cover

3. Remove the fixings shown in the illustration below. Retain the fixings if the motorcycle is to be returned to its original condition.



1. Fixings

4. Align the clutch cover protector to the cover as shown below.
5. **Daytona 675R only:** Retrieve two of the M6 x 30 mm screws and the M6 x 20 mm screw from the kit. Fit the screws to the locations indicated below and tighten to **9 Nm**.

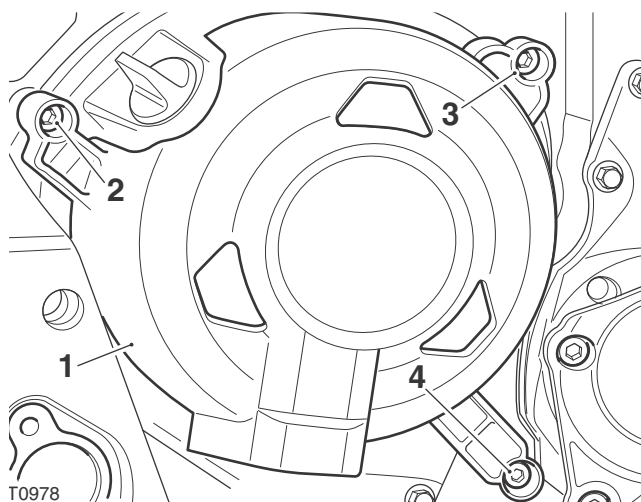


1. Protector

2. M6 x 30 mm screws

3. M6 x 20 mm screw

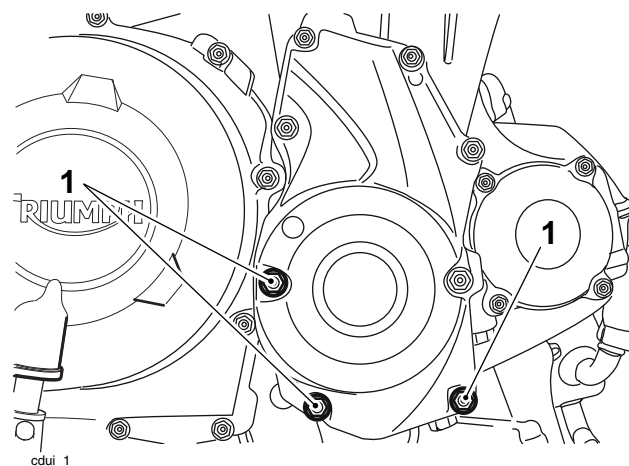
6. **Street Triple Rx, Street Triple and Street Triple R only:** Retrieve two of the M6 x 30 mm screws, the M6 x 20 mm screw and the M6 washer from the kit. Fit the washer between the protector and the clutch cover for the upper right hand fixing (item 3 below). Fit the screws to the locations indicated below and tighten to **9 Nm**.



- 1. Protector
- 2. M6 x 30 mm screw without washer
- 3. M6 x 30 mm screw with washer
- 4. M6 x 20 mm screw

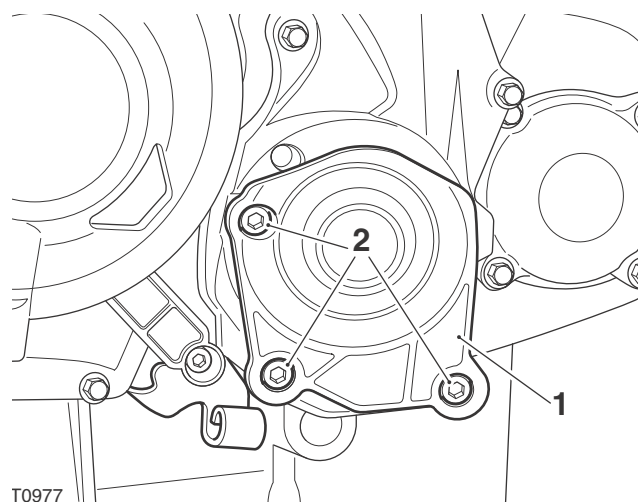
Crankshaft Cover

7. Remove the fixings shown in the illustration below. Retain the fixings if the motorcycle is to be returned to its original condition.



1. Fixings

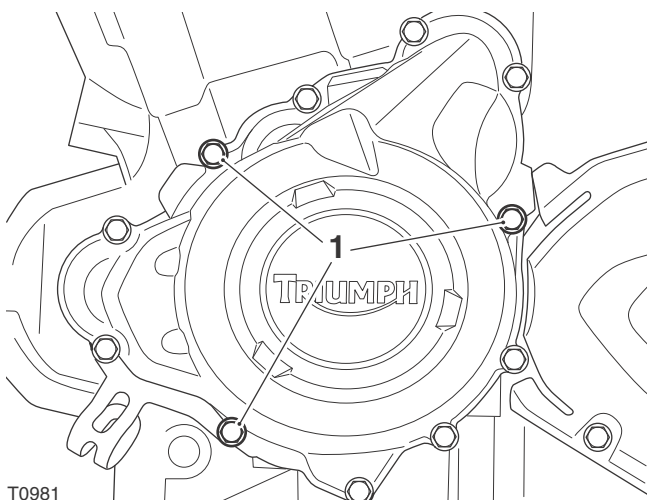
8. Align the crankshaft cover protector to the cover as shown below. Secure using three of the M6 x 30 mm screws supplied and tighten to **9 Nm**.



- 1. Protector
- 2. M6 x 30 mm screws

Alternator Cover

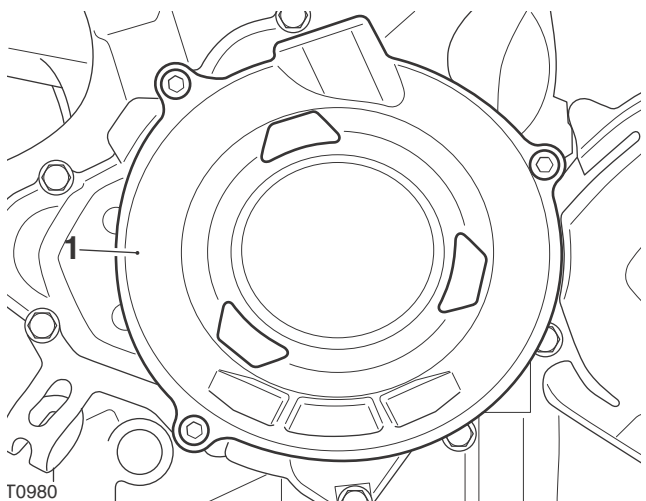
9. Remove the fixings shown in the illustration below. Retain the fixings if the motorcycle is to be returned to its original condition.



T0981

1. Fixings

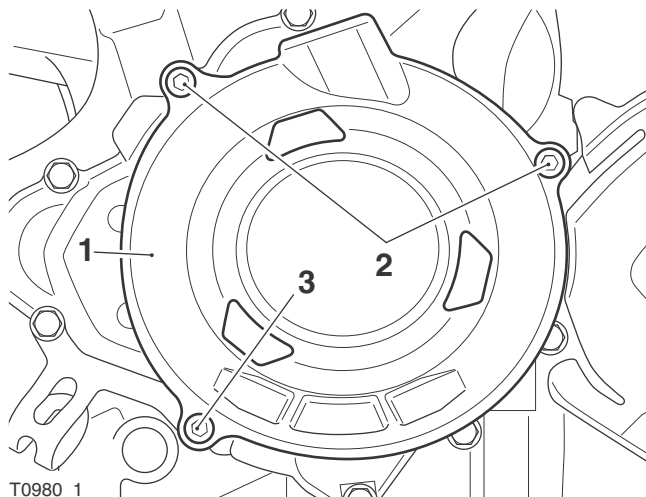
10. Align the alternator cover protector to the cover as shown below.



T0980

1. Protector

11. **Daytona 675R only:** Retrieve three of the M6 x 30 mm screws and the M6 washer supplied. Fit the washer between the protector and the alternator cover for the lower left hand fixing, as shown below. Fit the three screws and tighten to **9 Nm**.



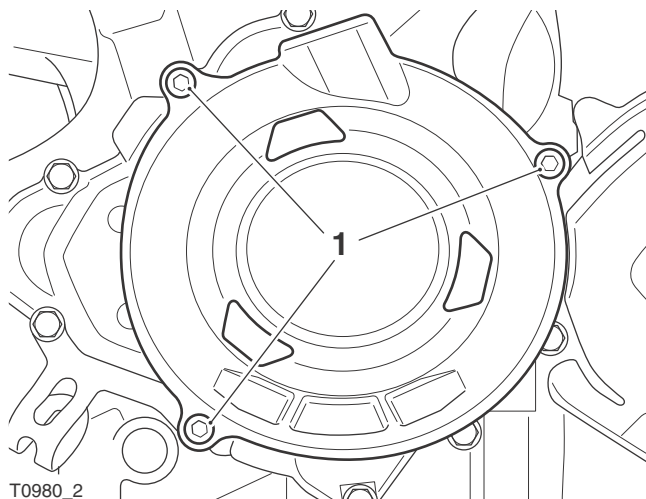
T0980_1

1. Protector

2. M6 x 30 mm screws

3. M6 x 30 mm screw with washer, between the protector and cover

12. **Street Triple Rx, Street Triple and Street Triple R only:** Retrieve three of the M6 x 30 mm supplied. Fit the screws and tighten to **9 Nm**.



T0980_2

1. M6 x 30 mm screws

13. **Daytona 675R only:** Refit the left hand and right hand lower fairings as described in the Service Manual.



Warning

If, after fitment of this accessory kit, you have any doubt about the performance of any aspect of the motorcycle, contact an authorised Triumph dealer and do not ride the motorcycle until the authorised dealer has declared it fit for use. Riding a motorcycle when there is any doubt as to any aspect of the performance of the motorcycle may result in loss of control of the motorcycle leading to an accident.



Warning

Never ride an accessory-equipped motorcycle at speeds above 80 mph (130 km/h).

The presence of accessories will cause changes in the stability and handling of the motorcycle. Failure to allow for changes in motorcycle stability may lead to loss of control or an accident.

Remember that the 80 mph (130 km/h) limit will be reduced by the fitting of non-approved accessories, incorrect loading, worn tyres, overall motorcycle condition and poor road or weather conditions.



Warning

The motorcycle must not be operated above the legal road speed limit except in closed course conditions.



Warning

Only operate this Triumph motorcycle at high speed in closed course, on-road competition or on closed course racetracks. High speed operation should only be attempted by riders who have been instructed in the techniques necessary for high speed riding and are familiar with the motorcycle's characteristics in all conditions.

High speed operation in any other circumstances is dangerous and will lead to loss of motorcycle control and an accident.