

## English

### Fitting Instructions:

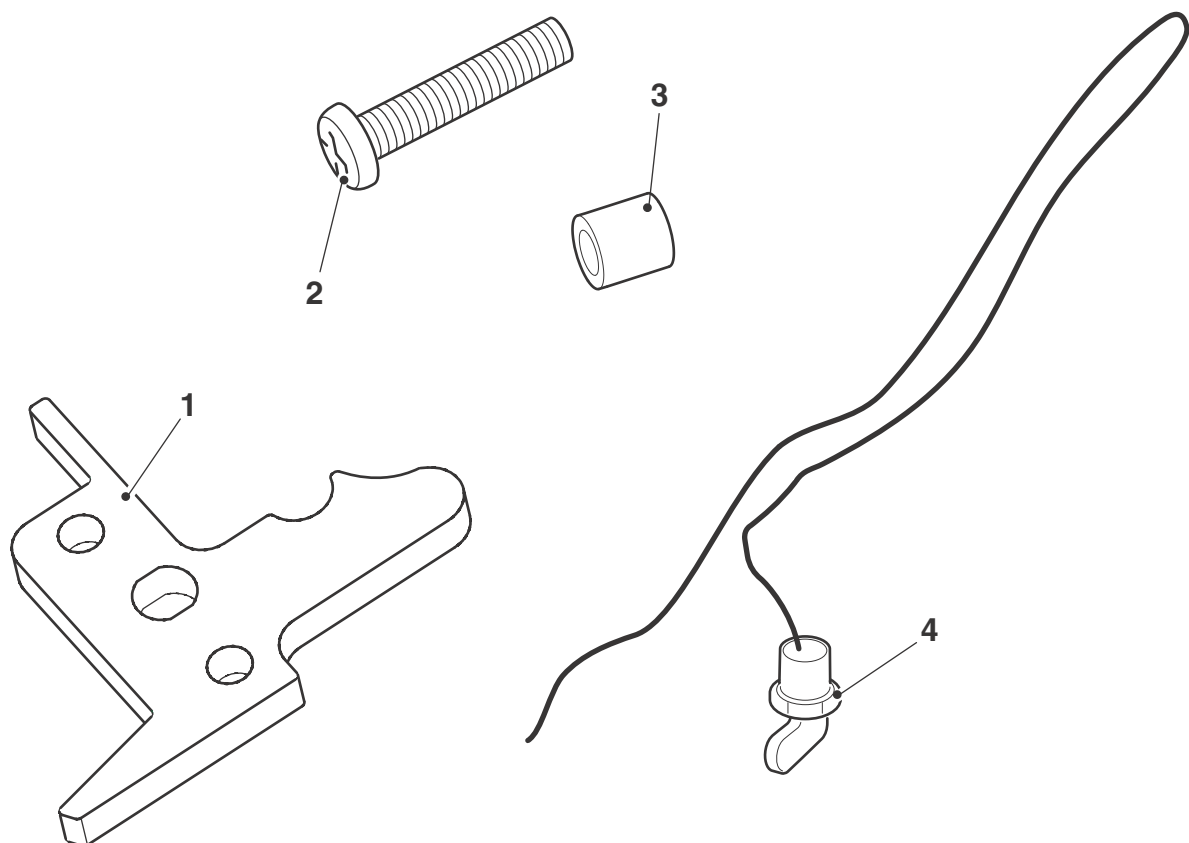
**Street Triple Rx, Street Triple from VIN 560477, Street Triple R from VIN 560477**

**Daytona 675 from VIN 564948 and Daytona 675 R from VIN 564948 A9618155, A9618156, A9618157, A9618158 and A9618159**

Thank you for choosing this Triumph genuine accessory kit. This accessory kit is the product of Triumph's use of proven engineering, exhaustive testing, and continuous striving for superior reliability, safety and performance.

Completely read all of these instructions before commencing the installation of the accessory kit in order to become thoroughly familiar with the kit's features and the installation process.

These instructions should be considered a permanent part of your accessory kit, and should remain with it even if your accessory-equipped motorcycle is subsequently sold.



### Parts Supplied:

1. Restrictor bracket	1 off	4. Anti-tamper seal (A9618156 only)	1 off
2. Screw, M5 x 16 mm	1 off	5. Certificate (not illustrated)	1 off
3. Sleeve	1 off		



## Warning

This accessory kit is designed for use on Triumph Street Triple Rx, Street Triple from VIN 560477, Street Triple R from VIN 560477, Daytona 675 from VIN 564948 and Daytona 675 R from VIN 564948 motorcycles only and should not be fitted to any other Triumph model or any other manufacturer's motorcycle. Fitting this accessory kit to any other Triumph model or manufacturer's motorcycle will affect the performance, stability and handling of the motorcycle. This may affect the rider's ability to control the motorcycle and could cause an accident.



## Warning

Always have Triumph approved parts, accessories and conversions fitted by a trained technician of an authorised Triumph dealer. The fitment of parts, accessories and conversions by a technician who is not of an authorised Triumph dealer may affect the handling, stability or other aspects of the motorcycle's operation, which may result in loss of motorcycle control and an accident.



## Warning

Throughout this operation, ensure that the motorcycle is stabilised and adequately supported to prevent risk of injury from the motorcycle falling.



## Warning

A torque wrench of known accurate calibration must be used when fitting this accessory kit. Failure to tighten any of the fasteners to the correct torque specification may result in loss of motorcycle control and an accident.

### Note:

- **In order to fit the restrictor bracket it is necessary to remove the fuel tank, airbox and throttle bodies.**



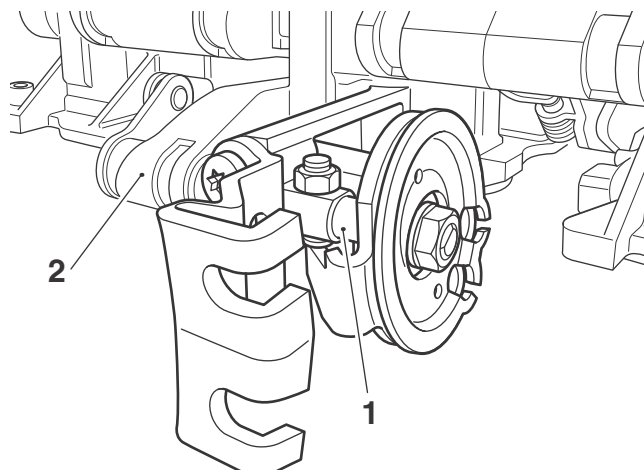
## Warning

Observe the warning advice given in the service manual on the safe handling of fuel and fuel containers.

A fire, causing personal injury and damage to property, could result from spilled fuel or fuel not handled or stored correctly.

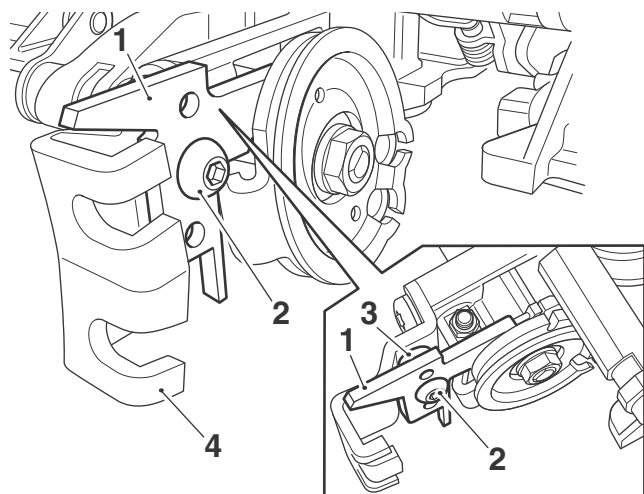
1. Remove the rider's seat.
2. Disconnect the battery, negative (black) lead first.
3. Remove the fuel tank, airbox and throttle bodies, as described in the service manual.

4. Note the position of the throttle stop on the throttle bodies.



1. Throttle stop
2. Throttle bodies

5. Fit the restrictor bracket, in the orientation shown below and secure to the throttle cable bracket with the screw and sleeve supplied. Ensure the semi-circular section of the restrictor bracket locates correctly on the throttle stop.



1. Restrictor bracket
2. Screw
3. Sleeve
4. Throttle cable bracket

6. Tighten the screw to **3 Nm**.
7. Operate the throttle to the fully open position. Ensure that the throttle stop on the throttle cam contacts the newly fitted bracket, in the fully open position.
8. Check for smooth throttle operation.



## Warning

Always ensure that the throttle opens smoothly and closes without sticking. Use of the motorcycle with an incorrectly assembled, sticking or damaged throttle mechanism could interfere with the safe operation of the motorcycle. Any of these conditions could result in loss of motorcycle control and an accident.

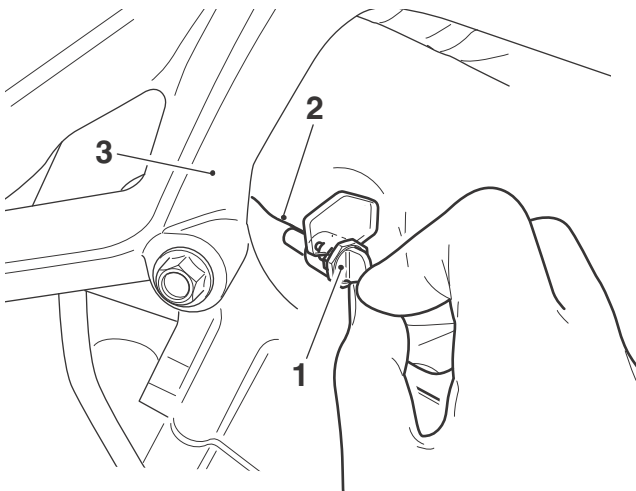
9. Refit the throttle bodies, as described in the service manual.

### Note:

- For kits which incorporate an anti-tamper seal follow the procedure detailed in Anti-Tamper Seal Fitment below. For all other kits, continue from step 24.

### Anti-Tamper Seal Fitment (A9618156 Only)

10. Pass the wire of the anti-tamper seal through the right hand side of the frame, as shown below.

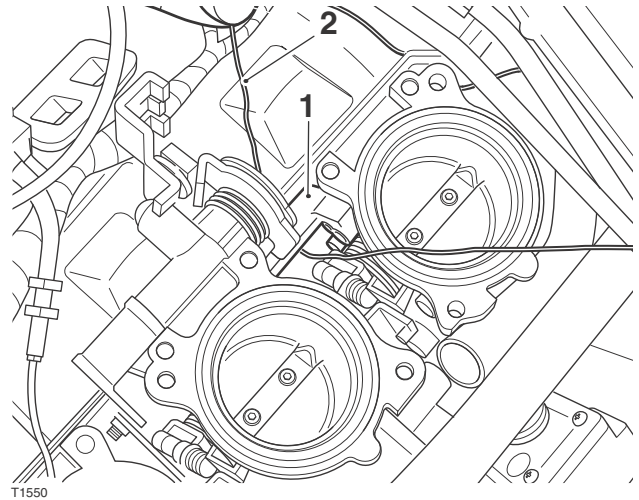


1. Anti-tamper seal
2. Anti-tamper seal wire
3. Frame

### Note:

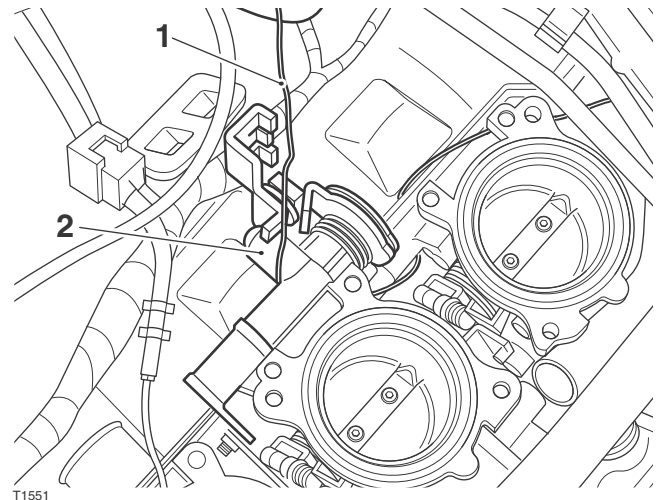
- During the routing of the anti-tamper seal wire, steps 12 to 16, ensure the wire is kept tight at all times. There should be no slack wire at any point.
11. Pull the wire through the frame until the anti-tamper seal is tight against the frame and not hanging loose. Ensure the anti-tamper seal is clearly visible.

12. Route the anti-tamper seal wire under and around the throttle body casting.



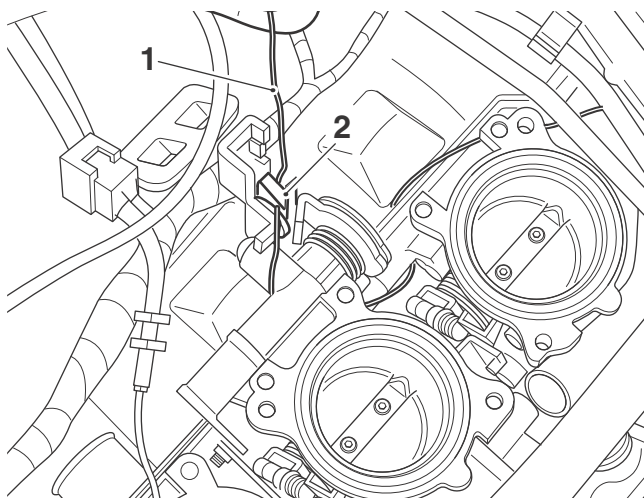
1. Throttle body casting
2. Anti-tamper seal wire

13. Route the wire up over the top of the throttle body cable bracket mounting boss, as shown below.



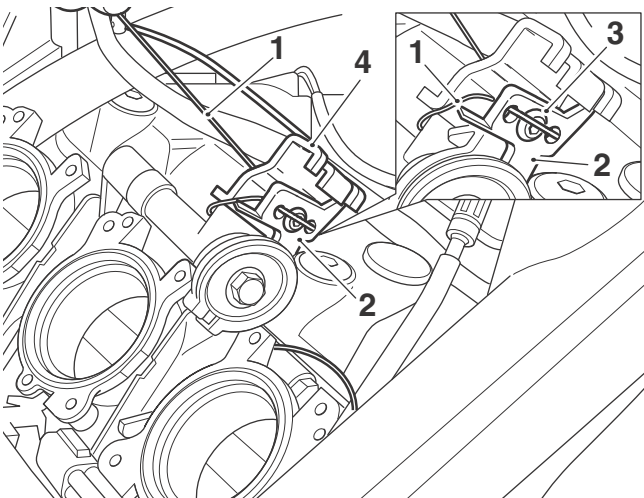
1. Anti-tamper seal wire
2. Cable bracket mounting boss

14. Route the anti-tamper seal wire through the top hole in the restrictor bracket.



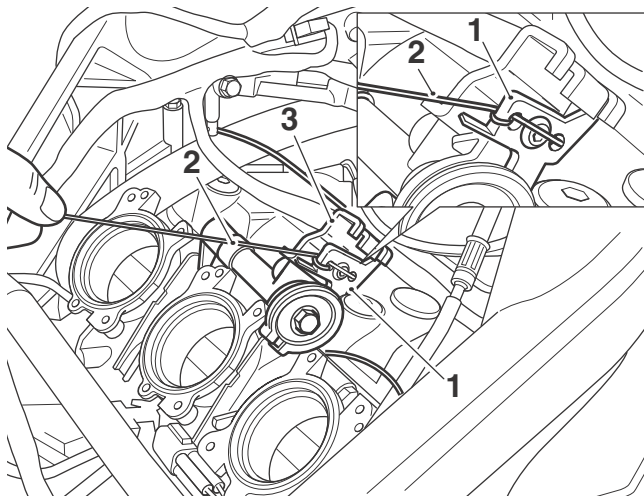
- 1. Anti-tamper seal wire**  
**2. Restrictor bracket**

15. Keeping the anti-tamper seal wire tight, feed the wire through the bottom hole in the restrictor bracket and under the throttle cable bracket. Ensure the anti-tamper seal wire passes over the screw head, as shown.



- 1. Anti-tamper seal wire**  
**2. Restrictor bracket**  
**3. Screw**  
**4. Throttle cable bracket (throttle cables not illustrated for clarity)**

16. Route the anti-tamper seal wire back over the throttle cable bracket mounting boss, through the top hole in the restrictor bracket. Loop the wire back over the top of the restrictor bracket, pull tight.



- 1. Restrictor bracket**  
**2. Anti-tamper seal wire**  
**3. Throttle cable bracket (throttle cables not illustrated for clarity)**

17. Route the anti-tamper seal wire back towards the anti-tamper seal, passing the wire again over the throttle body cable bracket mounting boss and under the throttle body casting. The routing is the reverse of that detailed in steps 12 and 13.
18. Operate the throttle to the fully open position. Ensure that the throttle stop on the throttle cam contacts the newly fitted bracket, in the fully open position.
19. Check for smooth throttle operation.



### Warning

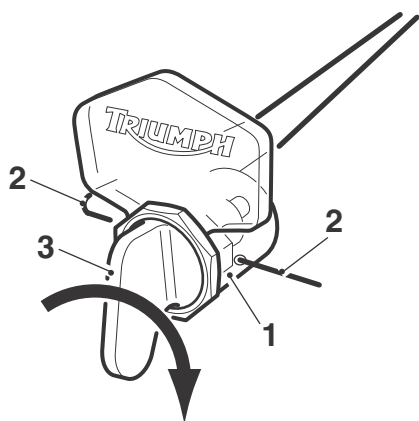
Always ensure that the throttle opens smoothly and closes without sticking. Use of the motorcycle with an incorrectly assembled, sticking or damaged throttle mechanism could interfere with the safe operation of the motorcycle. Any of these conditions could result in loss of motorcycle control and an accident.



### Caution

Do not insert the loose end of the wire and turn the handle on the body of the anti-tamper seal until you are certain that the seal is in a visible position, the routing of the wire is correct and the throttle operation is smooth. Once the wire is pushed into the body of the anti-tamper seal and the handle is turned it cannot be removed.

20. Push the wire through the side of the body of the anti-tamper seal. Turn the handle on the anti-tamper seal clockwise, at least one turn, until the wire is tightened to the desired length. Ensure there is no slack in the wire back to the boss on the throttle body.



- 1. Anti-tamper seal**  
**2. Anti-tamper seal wire**  
**3. Handle**

21. Snap off the handle on the anti-tamper seal.  
22. Trim off any excess loose wire from the side of the anti-tamper seal body.  
23. Ensure the body of the anti-tamper seal is still visible from the outside on the right hand side of the frame.  
24. Refit the airbox and fuel tank as described in the service manual.  
25. Check again for smooth throttle operation.

**! Warning**

Always ensure that the throttle opens smoothly and closes without sticking. Use of the motorcycle with an incorrectly assembled, sticking or damaged throttle mechanism could interfere with the safe operation of the motorcycle. Any of these conditions could result in loss of motorcycle control and an accident.

26. Reconnect the battery, positive (red) lead first.  
27. Refit the seat.  
28. Complete the power restriction certificate and hand to the owner of the motorcycle.

**! Warning**

After fitting the accessory kit the motorcycle will exhibit new handling characteristics. Operate the motorcycle in a safe area free from traffic to gain familiarity with any new characteristics. Operation of the motorcycle when not familiar with any new handling characteristics may result in loss of motorcycle control and an accident.

**! Warning**

If, after fitment of this accessory kit, you have any doubt about the performance of any aspect of the motorcycle, contact an authorised Triumph dealer and do not ride the motorcycle until the authorised dealer has declared it fit for use. Riding a motorcycle when there is any doubt as to any aspect of the performance of the motorcycle may result in loss of control of the motorcycle, leading to an accident.

**! Warning**

Never ride an accessory-equipped motorcycle at speeds above 80 mph (130 km/h). The presence of accessories will cause changes in the stability and handling of the motorcycle. Failure to allow for changes in motorcycle stability may lead to loss of control or an accident. Remember that the 80 mph (130 km/h) limit will be reduced by the fitting of non-approved accessories, incorrect loading, worn tyres, overall motorcycle condition and poor road or weather conditions.

**! Warning**

The motorcycle must not be operated above the legal road speed limit except in closed-course conditions.

**! Warning**

Only operate this Triumph motorcycle at high speed in closed-course, on road competition or on closed-course race tracks. High speed operation should only be attempted by riders who have been instructed in the techniques necessary for high speed riding and are familiar with the motorcycle's characteristics in all conditions. High speed operation in any other circumstances is dangerous and will lead to loss of motorcycle control and an accident.