



Accessory Fitting Instructions

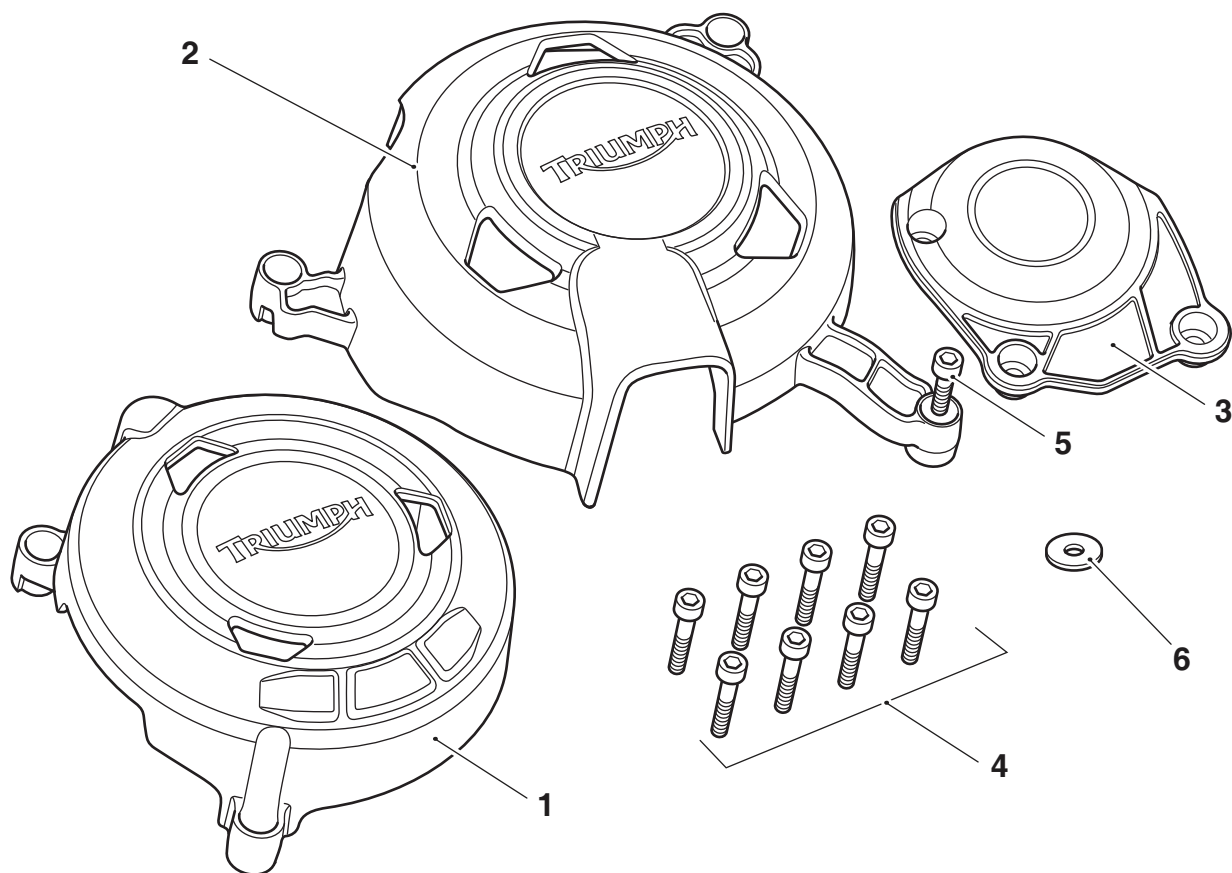
Engine Cover Protector Kit	
Kit Number	Models Affected
A9618132	Daytona 675 from VIN 564948, Daytona 675 R from VIN 564948, Daytona Moto2™ 765, Street Triple S, Street Triple S 660cc, Street Triple R from VIN 793032 up to VIN BF0949, Street Triple R LRH (Low Ride Height), Street Triple RS up to VIN BF0949,
A9610765	Street Triple R from VIN BF1297, Street Triple RS from VIN BF1297, Street Triple RS Moto2™

Thank you for choosing this Triumph genuine accessory kit. This accessory kit is the product of Triumph's use of proven engineering, exhaustive testing, and continuous striving for superior reliability, safety and performance.

Completely read all of these instructions before commencing the installation of the accessory kit in order to become thoroughly familiar with the kit's features and the installation process.

These instructions should be considered a permanent part of your accessory kit, and should remain with it even if your accessory equipped motorcycle is subsequently sold.

Parts Supplied:



1. Alternator cover protector	1 off	4. Fixing, M6 x 35 mm	8 off
2. Clutch cover protector	1 off	5. Fixing, M6 x 20 mm	1 off
3. Crankshaft cover protector	6 off	6. Washer (where supplied)	1 off

! Warning

Fit only genuine Triumph accessories to those models approved by Triumph as listed in the associated Triumph fitting instructions. The accessory kits covered in this instruction are designed for use on specific models of Triumph motorcycle. The accessory kits and the models applicable are listed at the start of the instruction. They should never be fitted to any other Triumph model or to any other manufacturer's motorcycle. Fitting an accessory kit to a Triumph model not listed, or to any other manufacturer's motorcycle will affect the performance, stability and handling of the motorcycle. This may affect the rider's ability to control the motorcycle and could result in an accident causing severe injuries or death.

! Warning

Always have Triumph approved parts, accessories and conversions fitted by a trained technician of an authorised Triumph dealer. The fitment of parts, accessories and conversions by a technician who is not of an authorised Triumph dealer may affect the handling, stability or other aspects of the motorcycle's operation which may result in loss of motorcycle control and an accident.

Warning

Make sure the motorcycle is stabilised and adequately supported. Do not support the motorcycle on any ancillary component, the exhaust system or any other non structural parts of the motorcycle frame. A correctly supported motorcycle will help prevent it from falling. An unstable motorcycle may fall, causing injury to the operator or damage to the motorcycle.

Warning

A torque wrench of known accurate calibration must be used when fitting this accessory kit. Failure to tighten any of the fasteners to the correct torque specification may affect motorcycle performance, handling and stability. This may result in loss of motorcycle control and an accident.

Warning

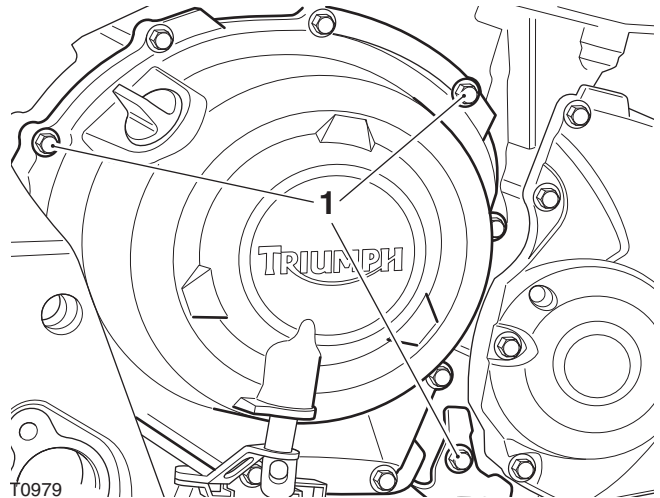
If the engine has recently been running, the exhaust system will be hot. Before working on or near the exhaust system, allow sufficient time for the system to cool, as touching any part of a hot exhaust could cause burn injuries.

Note:

- **Triumph offers a broad range of approved genuine accessories for your motorcycle. We cannot therefore cover all possible equipment variations in these instructions. For removal and installation of Triumph Genuine Accessories, always refer to the instructions supplied with the respective accessory kit. To obtain additional copies of any Triumph accessory instructions, visit www.triumphinstructions.com or contact your authorised Triumph dealer.**
1. Using a mixture of cold water and mild automotive cleaner, clean the surfaces of the following covers and the inside surface of each corresponding cover protector:
 - Alternator cover;
 - Clutch cover;
 - Crankshaft cover.

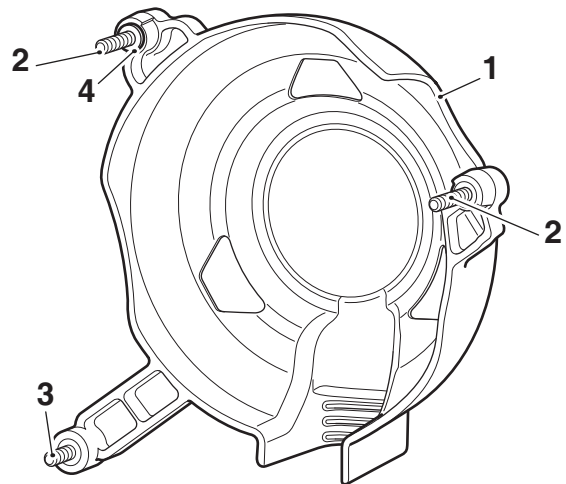
Clutch Cover

2. Remove the fixings shown in the illustration below. Retain the fixings if the motorcycle is to be returned to its original condition.



1. Fixings

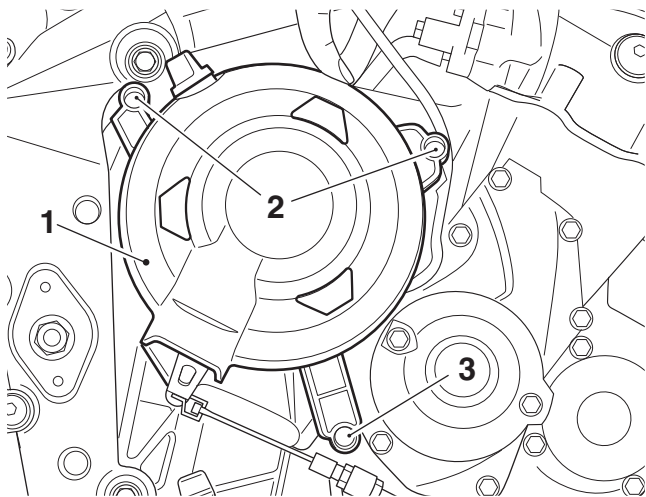
3. Collect the clutch cover protector, two M6 x 30 mm fixings, M6 x 20 mm fixing and where supplied the washer from the kit.
4. Fit the two M6 x 30 mm fixings and M6 x 20 mm fixing into the clutch cover protector as shown. Where supplied, fit the washer onto the M6 x 30 mm fixing at the position shown below.



1. Clutch cover protector
2. Fixing, M6 x 30 mm
3. Fixing, M6 x 20 mm
4. Washer, where supplied

5. Align the clutch cover protector to the clutch cover as shown and fit the two M6 x 30 mm fixings and the M6 x 20 mm fixing to the locations indicated below. Make sure where supplied, the washer remains correctly positioned.

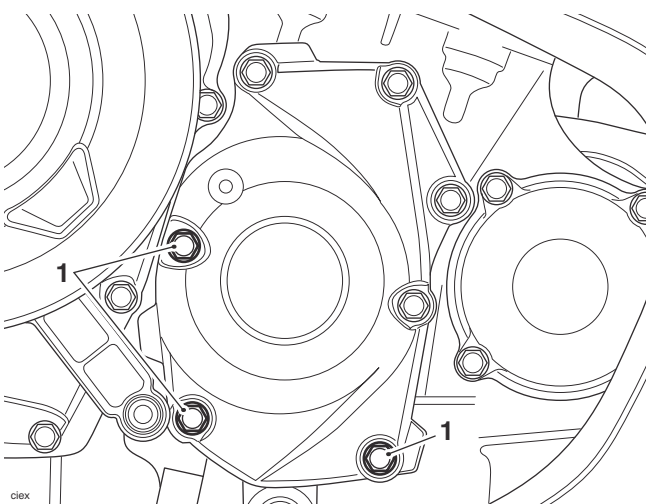
- A9618132 kit, tighten the fixings to **9 Nm**.
- A9610765 kit, tighten the fixings to **11 Nm**.



1. Protector
2. M6 x 30 mm fixings
3. M6 x 20 mm fixing

Crankshaft Cover

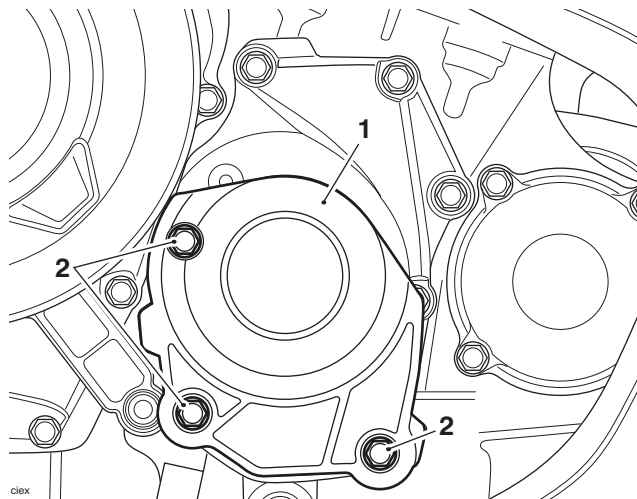
6. Remove the fixings shown in the illustration below. Retain the fixings if the motorcycle is to be returned to its original condition.



1. Fixings

7. Align the crankshaft cover protector to the cover as shown below. Secure using three of the M6 x 30 mm fixings from the kit and tighten to **9 Nm**.

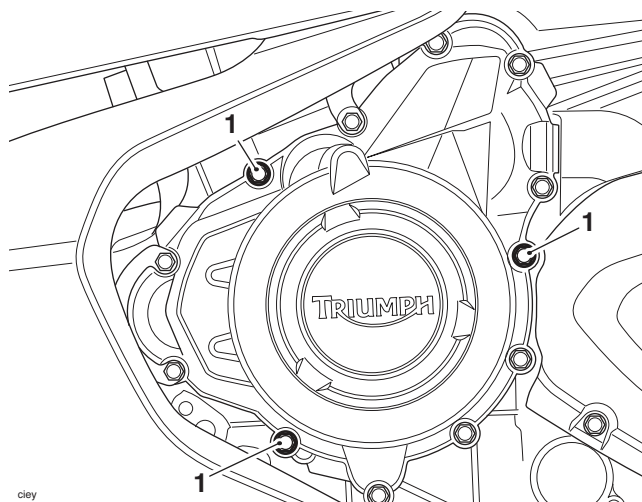
- A9618132 kit, tighten the fixings to **9 Nm**.
- A9610765 kit, tighten the fixings to **10 Nm**.



1. Protector
2. M6 x 30 mm fixings

Alternator Cover

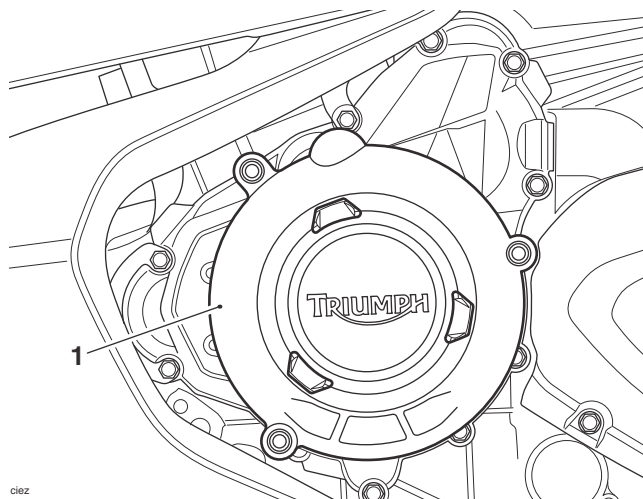
8. Remove the fixings shown in the illustration below. Retain the fixings if the motorcycle is to be returned to its original condition.



1. Fixings

9. Collect the alternator cover and three M6 x 30 mm fixings from the kit.

10. Align the alternator cover protector to the cover as shown below.

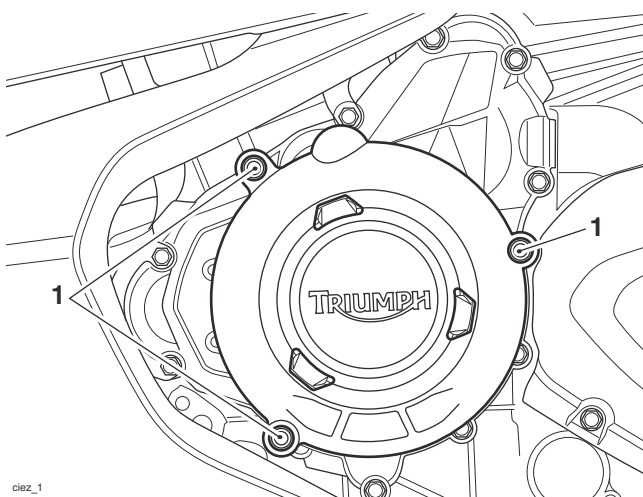


ciez

1. Protector

11. Fit the three fixings, as shown below.

- A9618132 kit, tighten the fixings to **9 Nm**.
- A9610765 kit, tighten the fixings to **10 Nm**.



ciez_1

1. M6 x 30 mm fixings



Warning

After fitting the accessory kit the motorcycle will exhibit new handling characteristics. Operate the motorcycle in a safe area free from traffic to gain familiarity with any new characteristics. Operation of the motorcycle when not familiar with any new handling characteristics may result in loss of motorcycle control and an accident.



Warning

Never ride an accessory-equipped motorcycle at speeds above 80 mph (130 km/h).

The presence of accessories will cause changes in the stability and handling of the motorcycle. Failure to allow for changes in motorcycle stability may lead to loss of control or an accident.

Remember that the 80 mph (130 km/h) limit will be reduced by the fitting of non-approved accessories, incorrect loading, worn tyres, overall motorcycle condition and poor road or weather conditions.



Warning

This motorcycle must not be operated above the legal road speed limit except in authorised closed-course conditions.



Warning

Only operate this Triumph motorcycle at high speed in closed-course on-road competition or on closed-course racetracks. High-speed operation should only be attempted by riders who have been instructed in the techniques necessary for high-speed riding and are familiar with the motorcycle's characteristics in all conditions.

High-speed operation in any other circumstances is dangerous and may lead to loss of motorcycle control and an accident.