

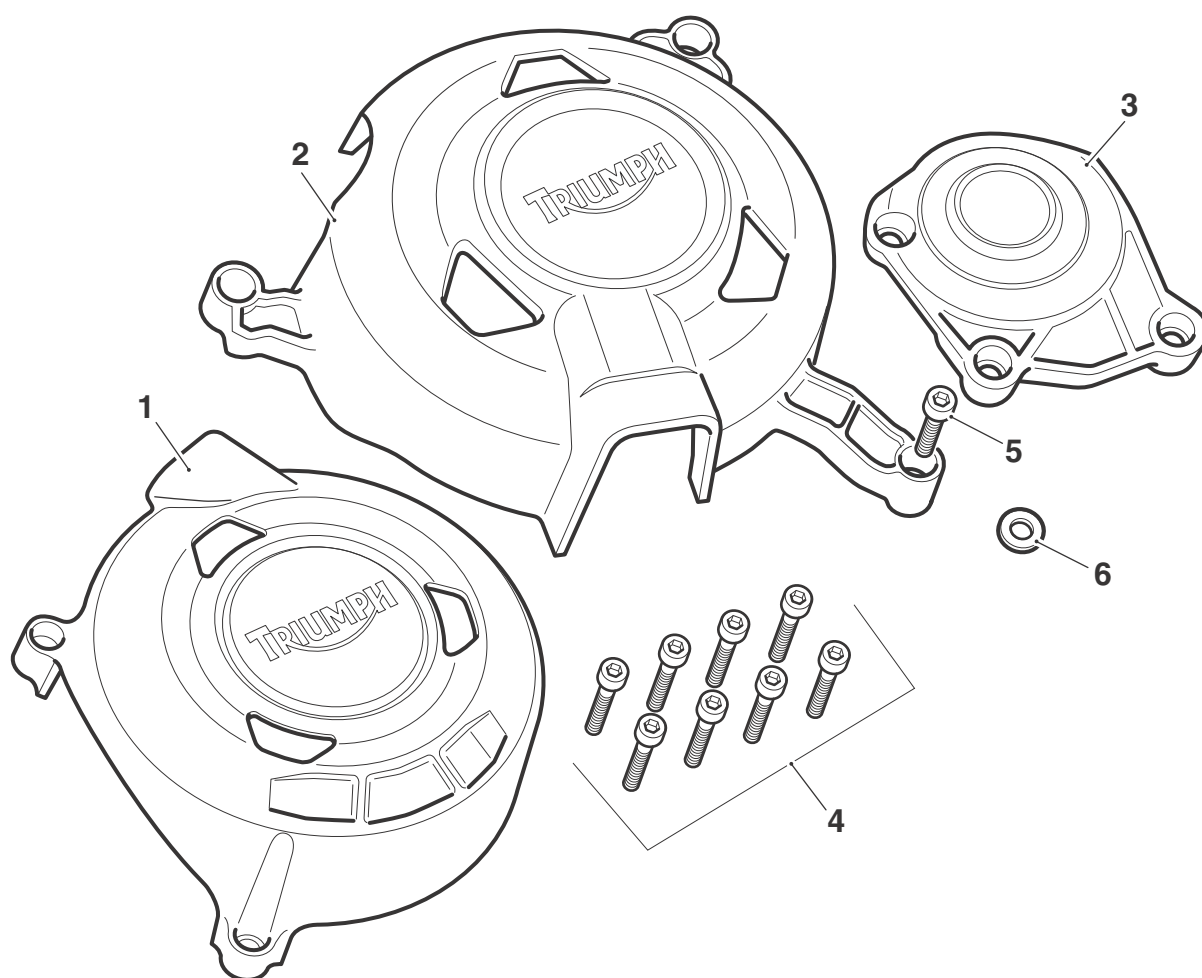
### Fitting Instructions:

### Daytona 675 R, Street Triple from VIN 480782 and Street Triple R from VIN 482182 A9618130

Thank you for choosing this Triumph genuine accessory kit. This accessory kit is the product of Triumph's use of proven engineering, exhaustive testing, and continuous striving for superior reliability, safety and performance.

Completely read all of these instructions before commencing the installation of the accessory kit in order to become thoroughly familiar with the kit's features and the installation process.

These instructions should be considered a permanent part of your accessory kit, and should remain with it even if your accessory-equipped motorcycle is subsequently sold.



T0976

### Parts Supplied:

|                               |       |                      |       |
|-------------------------------|-------|----------------------|-------|
| 1. Alternator cover protector | 1 off | 4. Screw, M6 x 30 mm | 8 off |
| 2. Clutch cover protector     | 1 off | 5. Screw, M6 x 20 mm | 1 off |
| 3. Crankshaft cover protector | 1 off | 6. Washer, M6        | 1 off |



### Warning

This accessory kit is designed for use on Triumph Daytona 675 R, Street Triple from VIN 480782 and Street Triple R from VIN 482182 motorcycles only and should not be fitted to any other manufacturer's motorcycle. Fitting this accessory kit to any other manufacturer's motorcycle will affect the performance, stability and handling of the motorcycle. This may affect the rider's ability to control the motorcycle and could cause an accident.



### Warning

Always have Triumph approved parts, accessories and conversions fitted by a trained technician of an authorised Triumph dealer. The fitment of parts, accessories and conversions by a technician who is not of an authorised Triumph dealer may affect the handling, stability or other aspects of the motorcycle's operation which may result in loss of motorcycle control and an accident.



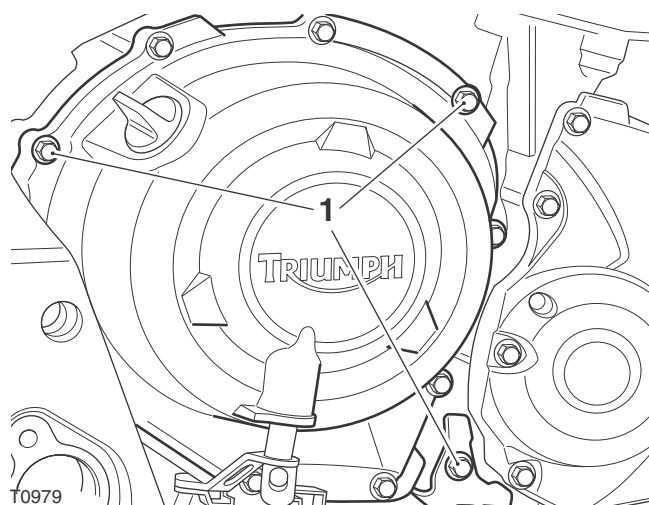
### Warning

Throughout this operation, ensure that the motorcycle is stabilised and adequately supported to prevent risk of injury from the motorcycle falling.

1. Using a mixture of cold water and mild automotive cleaner, clean the surfaces of the following covers and the inside surface of each corresponding cover protector:
  - Alternator cover;
  - Clutch cover;
  - Crankshaft cover.
2. **Daytona 675 R only:** Remove left and right hand lower fairings as described in the service manual.

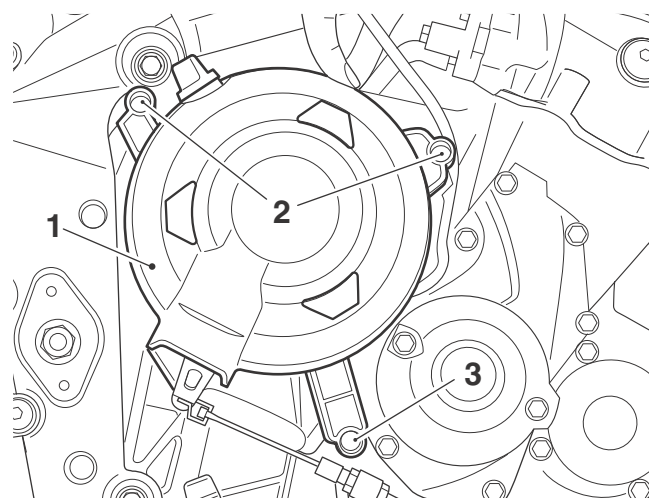
## Clutch Cover

3. Remove the fixings shown in the illustration below. Retain the fixings if the motorcycle is to be returned to its original condition.



### 1. Fixings

4. Align the clutch cover protector to the cover as shown below.
5. **Daytona 675 R only:** Retrieve two of the M6 x 30 mm screws and the M6 x 20 mm screw from the kit. Fit the screws to the locations indicated below and tighten to **9 Nm**.

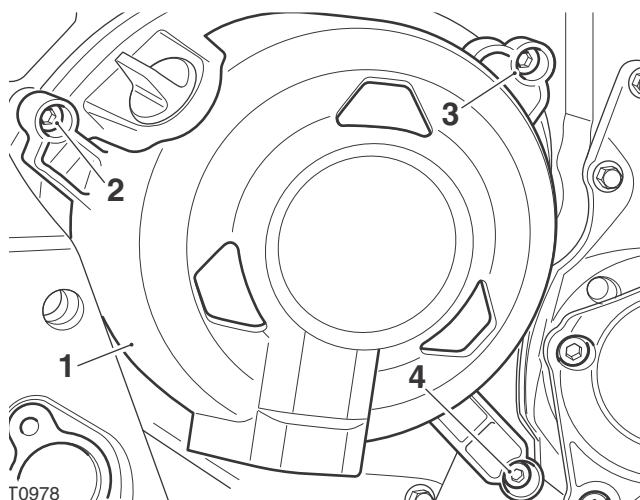


### 1. Protector

### 2. M6 x 30 mm screws

### 3. M6 x 20 mm screw

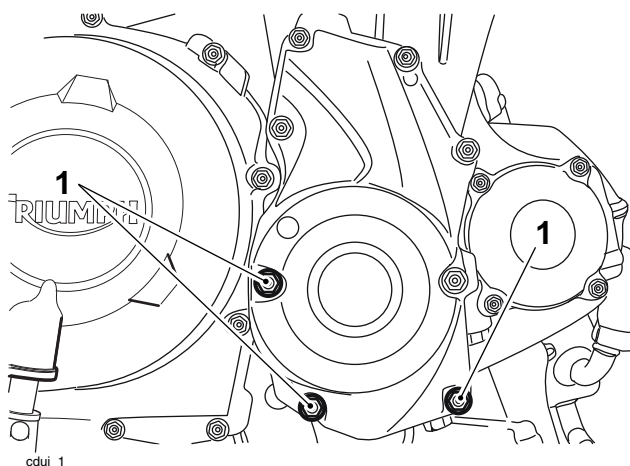
6. **For Street Triple and Street Triple R only:** Retrieve two of the M6 x 30 mm screws, the M6 x 20 mm screw and the M6 washer from the kit. Fit the washer between the protector and the clutch cover for the upper right hand fixing (item 3 below). Fit the screws to the locations indicated below and tighten to **9 Nm**.



- T0978**  
**1. Protector**  
**2. M6 x 30 mm screw without washer**  
**3. M6 x 30 mm screw with washer**  
**4. M6 x 20 mm screw**

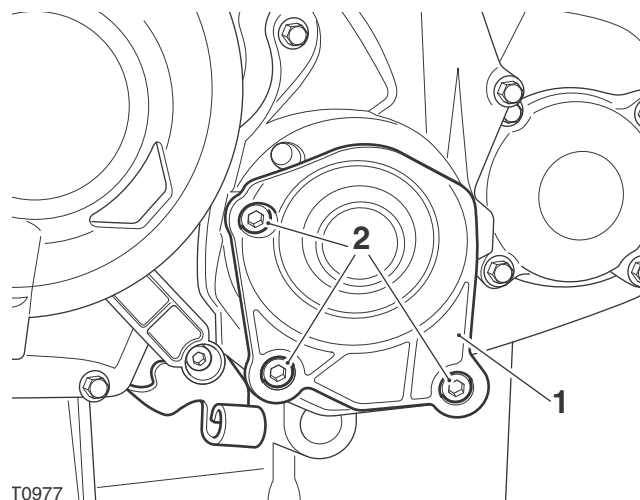
### Crankshaft Cover

7. Remove the fixings shown in the illustration below. Retain the fixings if the motorcycle is to be returned to its original condition.



- 1. Fixings**

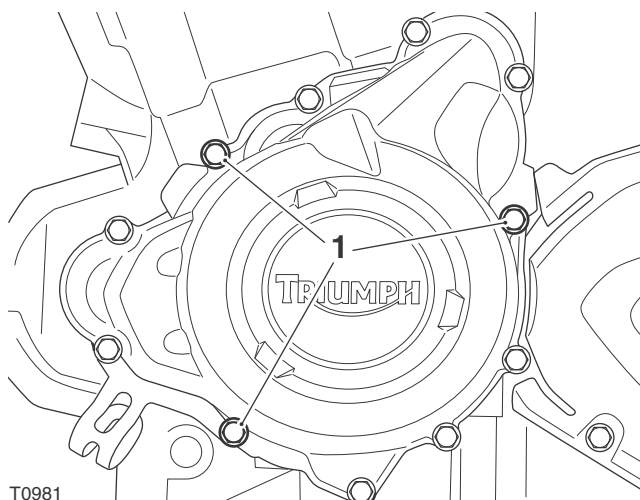
8. Align the crankshaft cover protector to the cover as shown below. Secure using three of the M6 x 30 mm screws supplied and tighten to **9 Nm**.



- T0977**  
**1. Protector**  
**2. M6 x 30 mm screws**

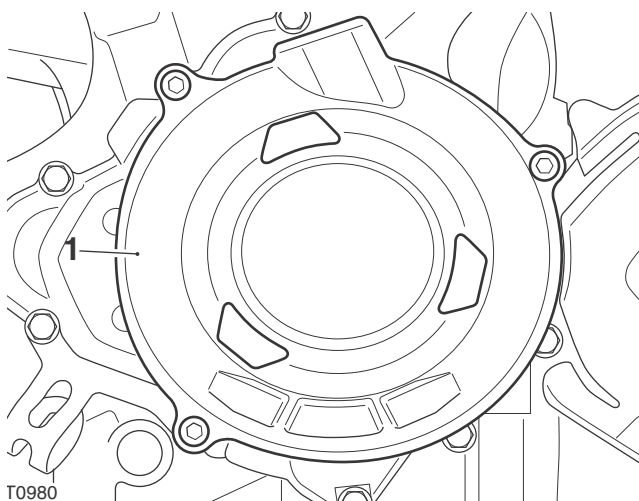
### Alternator Cover

9. Remove the fixings shown in the illustration below. Retain the fixings if the motorcycle is to be returned to its original condition.



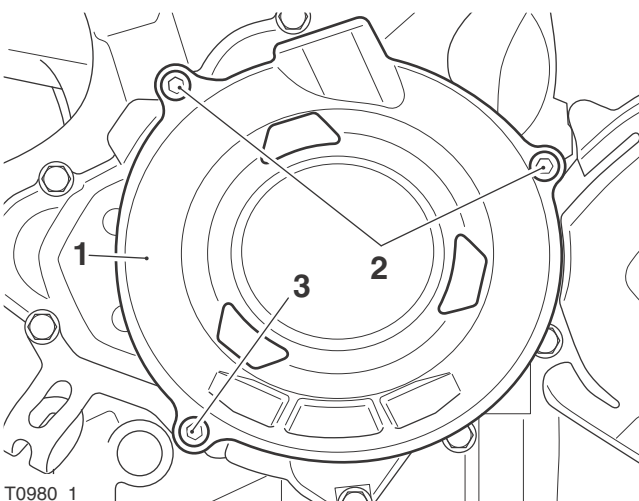
- T0981**  
**1. Fixings**

10. Align the alternator cover protector to the cover as shown below.



T0980  
**1. Protector**

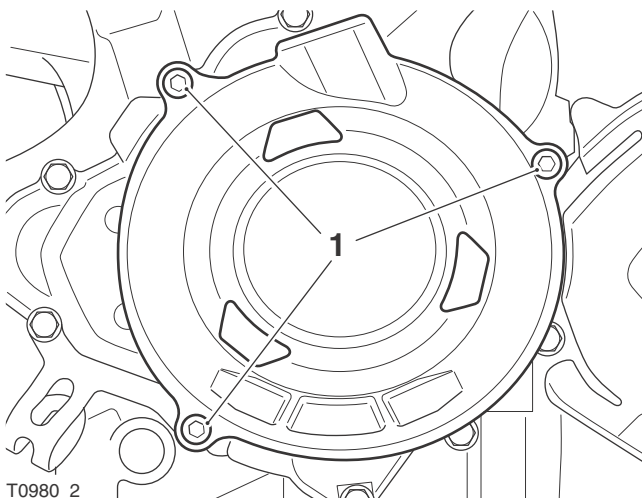
11. **Daytona 675 R only:** Retrieve three of the M6 x 30 mm screws and the M6 washer supplied. Fit the washer between the protector and the alternator cover for the lower left hand fixing, as shown below. Fit the three screws and tighten to **9 Nm**.



T0980\_1

- 1. Protector**  
**2. M6 x 30 mm screws**  
**3. M6 x 30 mm screw with washer, between the protector and cover**

12. **Street Triple and Street Triple R only:** Retrieve three of the M6 x 30 mm supplied. Fit the screws and tighten to **9 Nm**.



T0980\_2

- 1. M6 x 30 mm screws**

13. **Daytona 675 R only:** Refit the left hand and right hand lower fairings as described in the service manual.



### Warning

If, after fitment of this accessory kit, you have any doubt about the performance of any aspect of the motorcycle, contact an authorised Triumph dealer and do not ride the motorcycle until the authorised dealer has declared it fit for use. Riding a motorcycle when there is any doubt as to any aspect of the performance of the motorcycle may result in loss of control of the motorcycle leading to an accident.