



Accessory Fitting Instructions

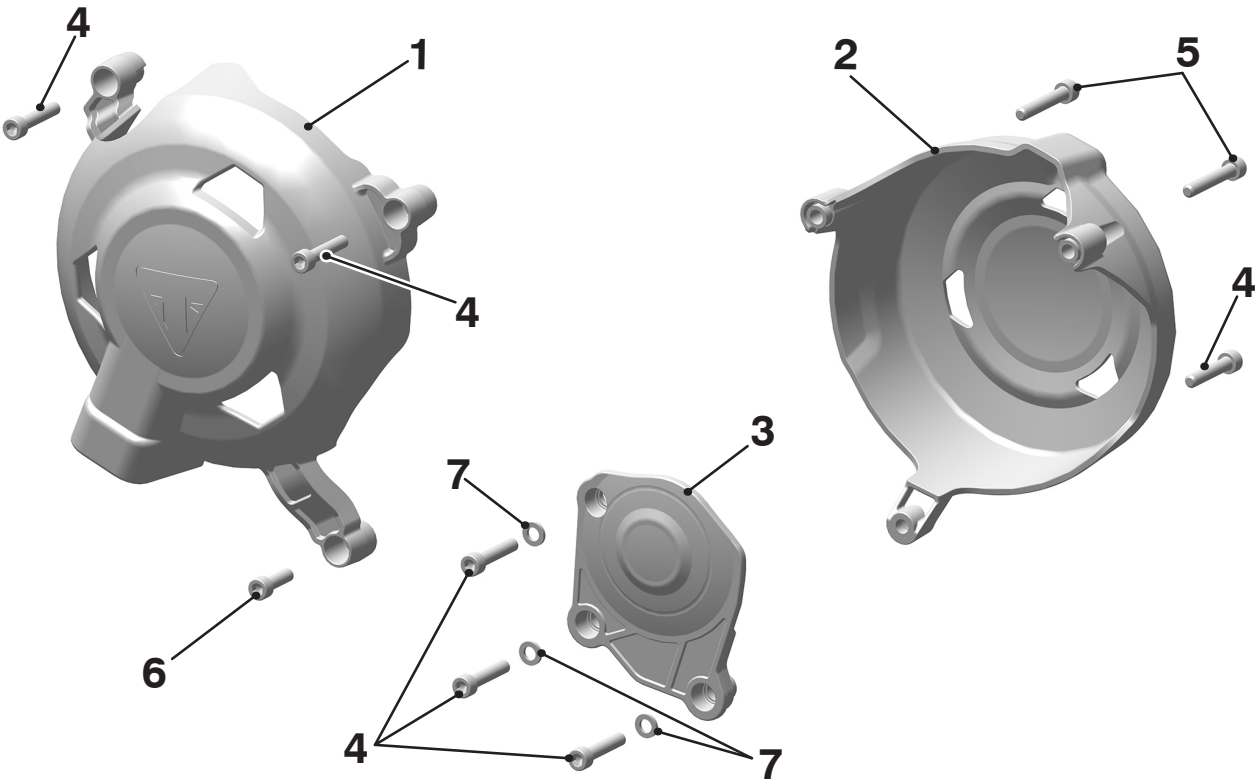
Thank you for choosing this Triumph genuine accessory kit. This accessory kit is the product of Triumph's use of proven engineering, exhaustive testing, and continuous striving for superior reliability, safety and performance.

Completely read all of these instructions before commencing the installation of the accessory kit in order to become thoroughly familiar with the kit's features and the installation process.

These instructions should be considered a permanent part of your accessory kit, and should remain with it even if your accessory equipped motorcycle is subsequently sold.

Engine Cover Protector Kit	
Kit Number	Models
A9610512	Trident from VIN AC6898 up to VIN BH7195
A9610560	Trident from VIN AC6898 up to VIN BH7195 and Tiger Sport from VIN AU7774 up to VIN BH7195
A9610567	Daytona 660, Trident from VIN AC6898 and Tiger Sport from VIN AU7774

Parts supplied



1. Alternator cover protector	1 off	5. Fixing, M6 x 35 mm	2 off
2. Clutch cover protector	1 off	6. Fixing, M6 x 20 mm	1 off
3. Crankshaft cover protector	1 off	7. Washer, M6 (kit A9610560 and A9610567)	3 off
4. Fixing, M6 x 30 mm	6 off	8. Washer, M6 (kit A9610512, not shown)	4 off

⚠ WARNING

Fit only genuine Triumph accessories to those models approved by Triumph as listed in the associated Triumph fitting instructions.

The accessory kits covered in this instruction are designed for use on specific models of Triumph motorcycle. The accessory kits and the models applicable are listed at the start of the instruction. They should never be fitted to any other Triumph model or to any other manufacturer's motorcycle.

Fitting an accessory kit to a Triumph model not listed, or to any other manufacturer's motorcycle, will affect the performance, stability and handling of the motorcycle.

Failure to follow the advice above may lead to loss of motorcycle control which could result in serious injury or death.

⚠ WARNING

Always have Triumph approved parts, accessories and conversions fitted by a competent person with the specialist knowledge and technical understanding of motorcycles, such as an authorised Triumph dealer.

The fitment of parts, accessories and conversions by a person without the specialist knowledge and technical understanding of motorcycles may affect the handling, stability or other aspects of the motorcycle's operation.

Failure to follow the advice above may lead to loss of motorcycle control which could result in serious injury or death.

⚠ WARNING

A torque wrench of known accurate calibration must be used when fitting this accessory kit.

Failure to tighten any of the fasteners to the correct torque specification may affect motorcycle performance, handling and stability.

Failure to follow the advice above may lead to loss of motorcycle control which could result in serious injury or death.

⚠ WARNING

Make sure the motorcycle is stabilised and adequately supported.

Do not support the motorcycle on any ancillary component, the exhaust system or any other non structural parts of the motorcycle frame.

A correctly supported motorcycle will help prevent it from falling.

An unstable motorcycle may fall resulting in motorcycle damage, serious injury or death.

NOTICE

Triumph offers a broad range of approved genuine accessories for your motorcycle.

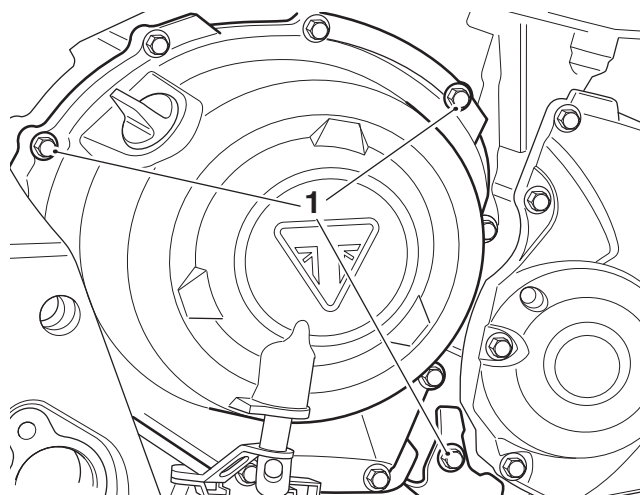
We cannot therefore cover all possible equipment variations in these instructions. For removal and installation of Triumph Genuine Accessories, always refer to the instructions supplied with the respective accessory kit.

To obtain additional copies of any Triumph accessory instructions, visit www.triumphinstructions.com or contact your authorised Triumph dealer.

1. Using a mixture of cold water and mild automotive cleaner, clean the surfaces of the covers and the inside surface of each corresponding cover protector.

Clutch cover

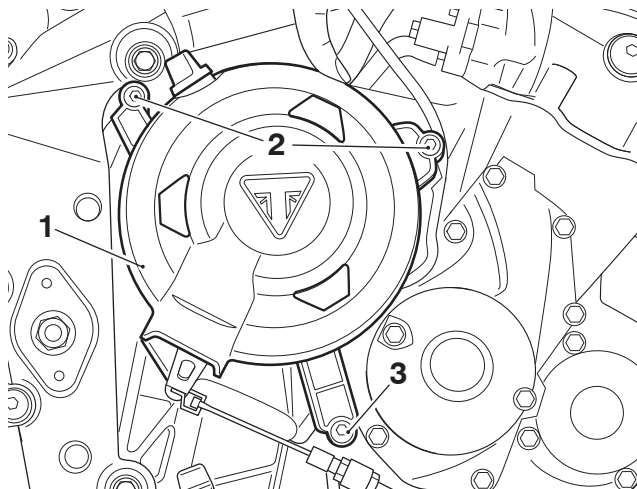
2. Remove the fixings shown in the illustration below. Retain the fixings for reuse if the motorcycle is to be returned to its original condition.



1. Fixings
3. Align the clutch cover protector to the cover as shown below:

For A9610560 and A9610567 Kits

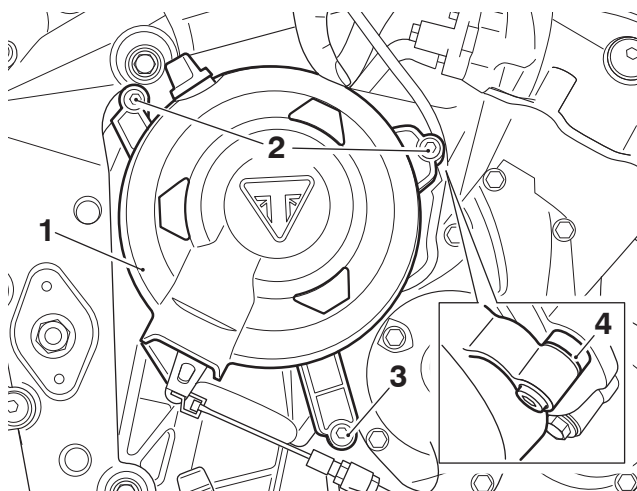
4. Collect two of the M6 x 30 mm fixings and the M6 x 20 mm fixing from the kit. Loosely fit the fixings to the locations indicated below. Once all fixings are loosely in place, tighten to **8 Nm**.



1. Clutch cover protector
2. Fixings, M6 x 30 mm
3. Fixing, M6 x 20 mm

For A9610512 Kit

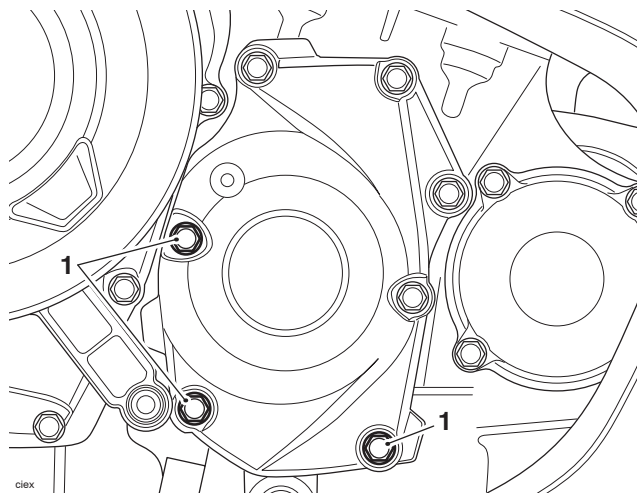
5. Collect two of the M6 x 30 mm fixings, the M6 x 20 mm fixing and one M6 washer from the kit. Loosely fit the fixings and washer to the locations indicated below. Once all fixings are loosely in place, tighten to **8 Nm**.



1. Clutch cover protector
2. Fixings, M6 x 30 mm
3. Fixing, M6 x 20 mm
4. Washer, M6

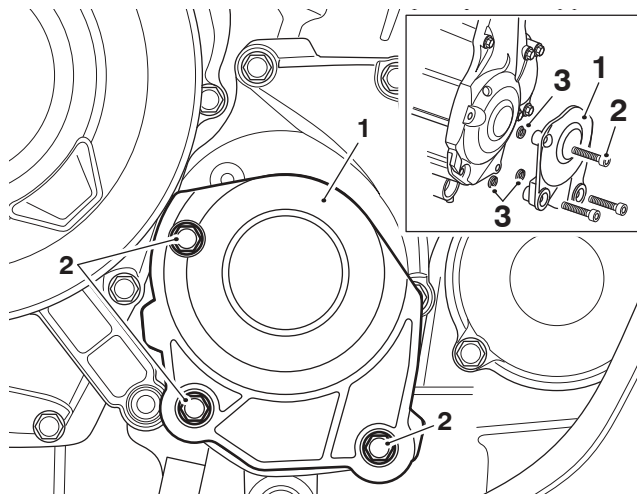
Crankshaft Cover

6. Remove the fixings shown in the illustration below. Retain the fixings for reuse if the motorcycle is to be returned to its original condition.



1. Fixings

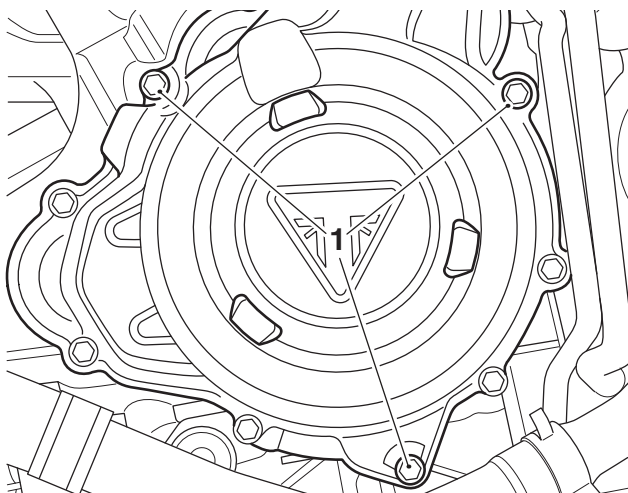
7. Align the crankshaft cover protector to the cover as shown below. Collect three M6 x 30 mm fixings and three M6 washers from the kit. Loosely fit the fixings and washers to the locations indicated below. Once all fixings are loosely in place, tighten to **8 Nm**.



1. Crankshaft cover protector
2. Fixings, M6 x 30 mm
3. Washer, M6

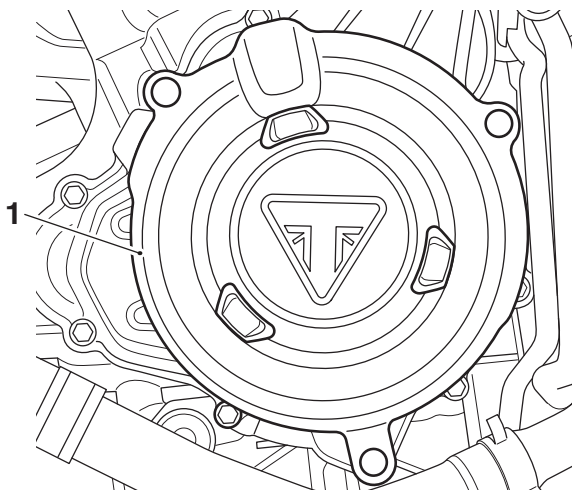
Alternator Cover

8. Remove the fixings shown in the illustration below. Retain the fixings for reuse if the motorcycle is to be returned to its original condition.



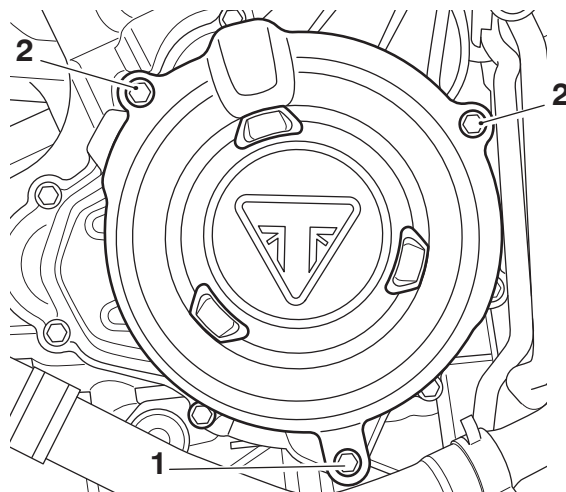
1. Fixings

9. Align the alternator cover protector to the cover as shown below.



1. Alternator cover protector

10. Collect the two M6 x 35 mm fixings and one M6 x 30 mm fixing from the kit. The M6 x 30 mm fixing must be fitted first in the location shown below. Then fit the two M6 x 35 mm fixings to the locations indicated below. Once all three fixings are loosely in place, tighten to **10 Nm**.



1. Fixing, M6 x 30 mm

2. Fixings, M6 x 35 mm

⚠ WARNING

After fitting the accessory kit the motorcycle will exhibit new handling characteristics.

Operate the motorcycle in a safe area free from traffic to gain familiarity with any new characteristics.

Operation of the motorcycle when not familiar with any new handling characteristics may lead to loss of motorcycle control which could result in serious injury or death.

⚠ WARNING

If, after fitting this accessory kit, you have any doubt about the performance of any aspect of the motorcycle, contact a competent person with the specialist knowledge and technical understanding of motorcycles, such as an authorised Triumph dealer.

Riding a motorcycle when there is any doubt as to any aspect of the performance of the motorcycle may lead to loss of motorcycle control which could result in serious injury or death.

⚠ WARNING

Never ride an accessory-equipped motorcycle at speeds above 80 mph (130 km/h).

Remember that the 80 mph (130 km/h) limit will be reduced by the fitting of non-approved accessories, incorrect loading, worn tyres, overall motorcycle condition and poor road or weather conditions.

The presence of accessories will cause changes in the stability and handling of the motorcycle. Failure to allow for changes in motorcycle stability may lead to loss of motorcycle control which could result in serious injury or death.

⚠ WARNING

High-speed operation should only be attempted by riders who have been instructed in the techniques necessary for high-speed riding and are familiar with the motorcycle's characteristics in all conditions.

Only operate this Triumph motorcycle at high speed in closed-course, on-road competition or on closed-course racetracks.

High-speed operation in any other circumstances is dangerous and may lead to loss of motorcycle control which could result in serious injury or death.

NOTICE

The motorcycle must not be operated above the legal road speed limit except in closed-course conditions.