



## Accessory Fitting Instructions

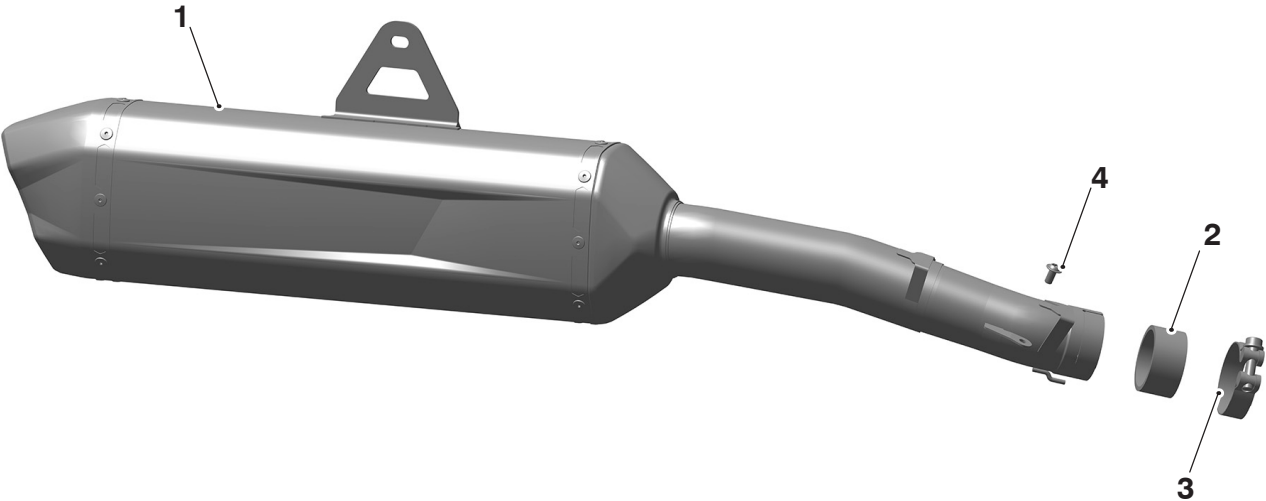
Thank you for choosing this Triumph genuine accessory kit. This accessory kit is the product of Triumph's use of proven engineering, exhaustive testing, and continuous striving for superior reliability, safety and performance.

Completely read all of these instructions before commencing the installation of the accessory kit in order to become thoroughly familiar with the kit's features and the installation process.

These instructions should be considered a permanent part of your accessory kit, and should remain with it even if your accessory equipped motorcycle is subsequently sold.

Silencer Kit	
Kit Number	Models
A9608191	Tiger 900 GT from VIN BP6441, Tiger 900 GT Pro from VIN BP5373, Tiger 900 Rally Pro from VIN BP4996

### Parts supplied



1. Silencer	1 off	3. Exhaust clamp	1 off
2. Exhaust gasket	1 off	4. Fixing, M5 x 10 mm	1 off

### **⚠ WARNING**

Fit only genuine Triumph accessories to those models approved by Triumph as listed in the associated Triumph fitting instructions.

The accessory kits covered in this instruction are designed for use on specific models of Triumph motorcycle. The accessory kits and the models applicable are listed at the start of the instruction. They should never be fitted to any other Triumph model or to any other manufacturer's motorcycle.

Fitting an accessory kit to a Triumph model not listed, or to any other manufacturer's motorcycle, will affect the performance, stability and handling of the motorcycle.

Failure to follow the advice above may lead to loss of motorcycle control which could result in serious injury or death.

### **⚠ WARNING**

Always have Triumph approved parts, accessories and conversions fitted by a competent person with the specialist knowledge and technical understanding of motorcycles, such as an authorised Triumph dealer.

The fitment of parts, accessories and conversions by a person without the specialist knowledge and technical understanding of motorcycles may affect the handling, stability or other aspects of the motorcycle's operation.

Failure to follow the advice above may lead to loss of motorcycle control which could result in serious injury or death.

### **⚠ WARNING**

A torque wrench of known accurate calibration must be used when fitting this accessory kit.

Failure to tighten any of the fasteners to the correct torque specification may affect motorcycle performance, handling and stability.

Failure to follow the advice above may lead to loss of motorcycle control which could result in serious injury or death.

### **⚠ WARNING**

Make sure the motorcycle is stabilised and adequately supported.

Do not support the motorcycle on any ancillary component, the exhaust system or any other non structural parts of the motorcycle frame.

A correctly supported motorcycle will help prevent it from falling.

An unstable motorcycle may fall resulting in motorcycle damage, serious injury or death.

### **NOTICE**

Triumph offers a broad range of approved genuine accessories for your motorcycle.

We cannot therefore cover all possible equipment variations in these instructions. For removal and installation of Triumph Genuine Accessories, always refer to the instructions supplied with the respective accessory kit.

To obtain additional copies of any Triumph accessory instructions, visit [www.triumphinstructions.com](http://www.triumphinstructions.com) or contact your authorised Triumph dealer.

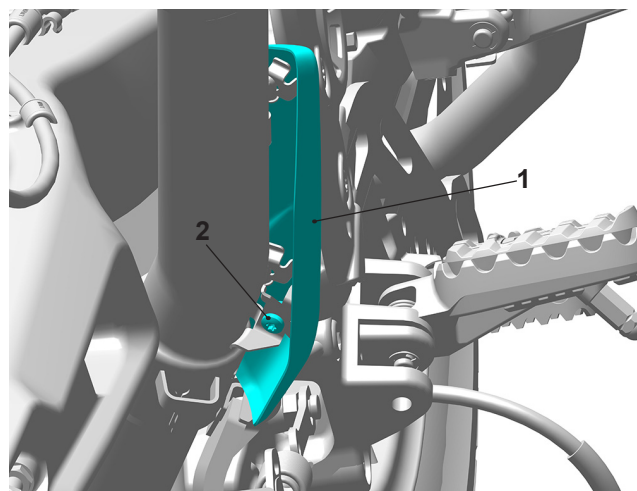
### **NOTICE**

Lock nuts can be reused providing resistance can be felt when the locking portion passes over the thread of the fixing.

Always use the correct replacement lock nut as recommended in the Triumph parts catalogue.

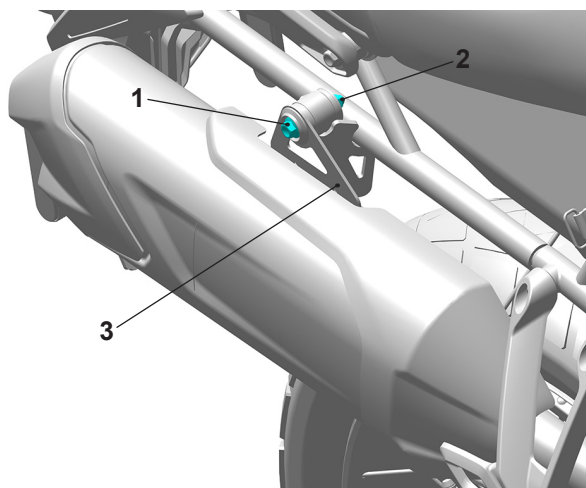
## **Removing the silencer**

1. Remove the seat as described in the Service Manual.
2. Remove the silencer pipe cover and discard the fixing.



1. Silencer
2. Silencer pipe cover
3. Release the clamp securing the silencer to the exhaust header pipe. Retain the clamp if the motorcycle is to be returned to its original condition.

4. Support the silencer and release the fixing and nut securing the silencer mounting bracket to the rear frame.

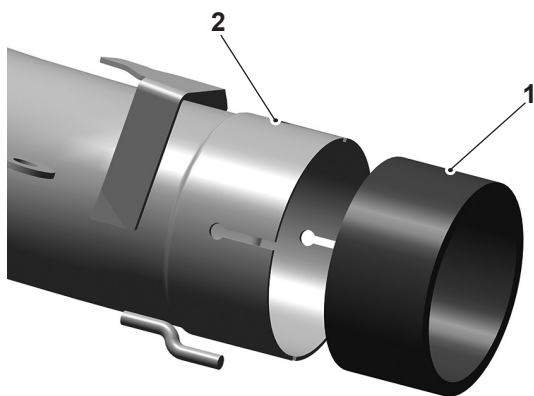


1. Fixing
2. Nut
3. Silencer mounting bracket

5. Move the silencer rearwards to disengage it from the exhaust header pipe.
6. Remove the silencer and discard the gasket.

### Fitting the silencer

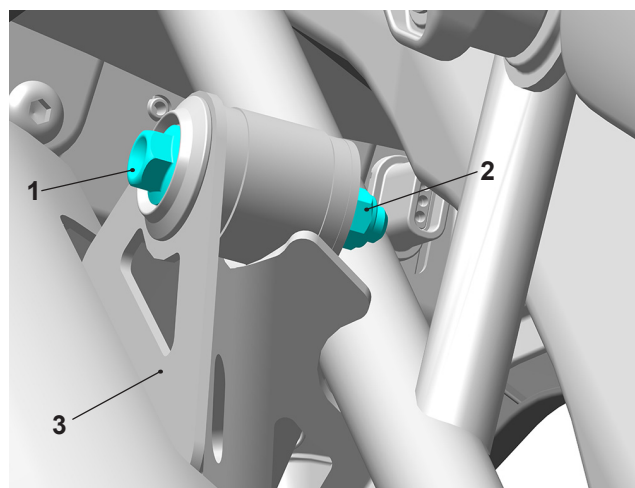
7. Collect the silencer and gasket from the kit. Insert the gasket into the silencer.



1. Gasket
2. Silencer

8. Collect the clamp from the kit and place over the end of the exhaust header pipe.
9. Position and engage the silencer to the exhaust header pipe. Do not tighten the clamp at this stage.

10. Align the silencer mounting bracket to the rear frame bracket and refit the original fixing and nut. Do not tighten the nut at this stage.

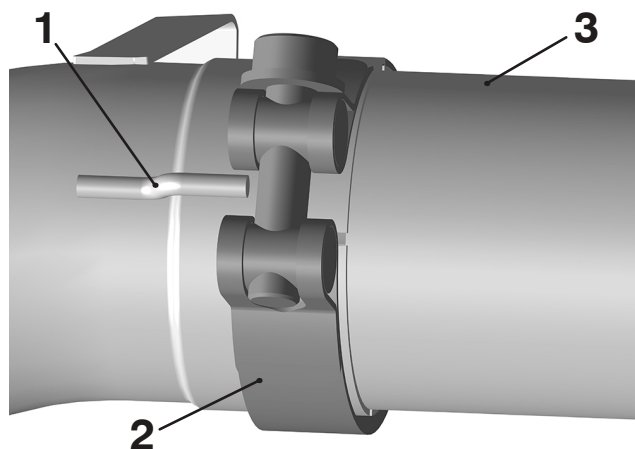


1. Fixing
2. Nut
3. Silencer mounting bracket

### NOTICE

Make sure that the overlap of the clamp aligns with the weld line of the header pipe assembly.

11. Align the clamp to the exhaust header pipe and silencer joint using the alignment marker as shown below and tighten to **10 Nm**.



1. Alignment marker
2. Clamp
3. Exhaust header pipe

12. Tighten the fixing on the silencer mounting bracket to **15 Nm**.
13. Replace the silencer cover using the fixing from the kit and tighten to **5 Nm**

### **⚠ CAUTION**

Do not install the exhaust system or run the engine without the exhaust heat shields fitted.

Components protected by the exhaust heat shields may suffer severe damage or a fire if the motorcycle is operated without the heat shields being fitted.

14. Start the engine and check for exhaust gas leaks. Rectify if necessary.
15. Refit the seat as described in the Service Manual.

### **⚠ WARNING**

After fitting the accessory kit the motorcycle will exhibit new handling characteristics.

Operate the motorcycle in a safe area free from traffic to gain familiarity with any new characteristics.

Operation of the motorcycle when not familiar with any new handling characteristics may lead to loss of motorcycle control which could result in serious injury or death.

### **⚠ WARNING**

If, after fitting this accessory kit, you have any doubt about the performance of any aspect of the motorcycle, contact a competent person with the specialist knowledge and technical understanding of motorcycles, such as an authorised Triumph dealer.

Riding a motorcycle when there is any doubt as to any aspect of the performance of the motorcycle may lead to loss of motorcycle control which could result in serious injury or death.

### **⚠ WARNING**

Never ride an accessory-equipped motorcycle at speeds above 80 mph (130 km/h).

Remember that the 80 mph (130 km/h) limit will be reduced by the fitting of non-approved accessories, incorrect loading, worn tyres, overall motorcycle condition and poor road or weather conditions.

The presence of accessories will cause changes in the stability and handling of the motorcycle. Failure to allow for changes in motorcycle stability may lead to loss of motorcycle control which could result in serious injury or death.

### **⚠ WARNING**

High-speed operation should only be attempted by riders who have been instructed in the techniques necessary for high-speed riding and are familiar with the motorcycle's characteristics in all conditions.

Only operate this Triumph motorcycle at high speed in closed-course, on-road competition or on closed-course racetracks.

High-speed operation in any other circumstances is dangerous and may lead to loss of motorcycle control which could result in serious injury or death.

### **NOTICE**

The motorcycle must not be operated above the legal road speed limit except in closed-course conditions.

---

### HOMOLOGATION CERTIFICATE

This document certifies that this exhaust kit complies in full with the road approval regulation stated below:

United Nations Regulation ECE 41-04  
Uniform Provisions Concerning the Approval of:  
Motorcycles with Regard to Noise



**E9\*41R05/01\*1252\*00**

This exhaust kit can be fitted to the vehicles listed below:

Kit Number	Silencer Number	Vehicle Commercial Name	Vehicle Approval Number
A9608191	2209180	Tiger 900 GT from VIN BP6441, Tiger 900 GT Pro from VIN BP5373, Tiger 900 Rally Pro from VIN BP4996	E9*168/2013*16059*00

The installation of this exhaust kit does not affect the performance of the original equipment catalytic converter which remains unchanged.