



Accessory Fitting Instructions

Silencer Bracket Kit	
Kit Number	Models Affected
A9608187	Speed Triple 1200 RS

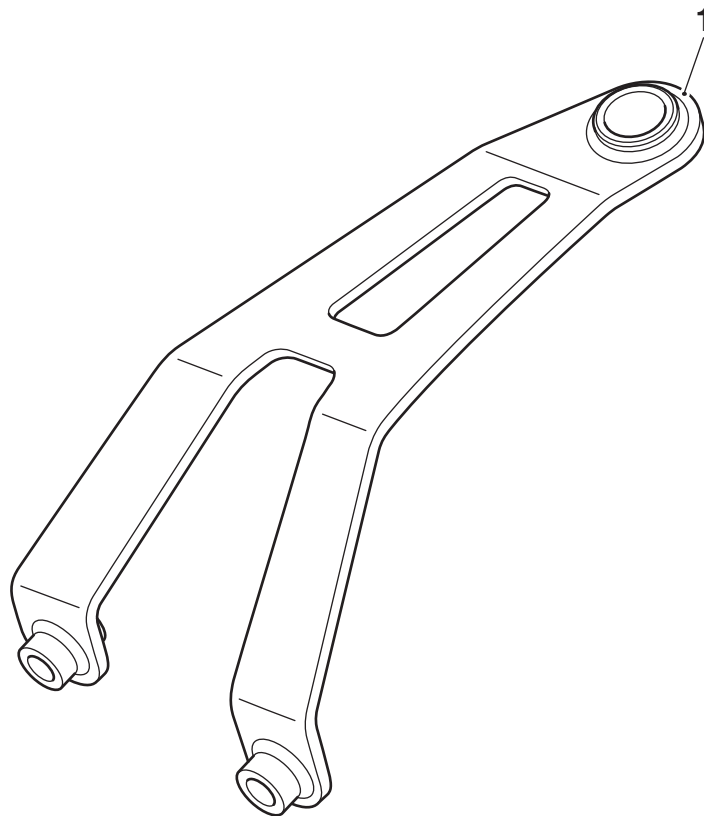
Note:

- **The Silencer Bracket Kit must only be used when a seat cowl is fitted to the motorcycle.**

Completely read all of these instructions before commencing the installation of the accessory kit in order to become thoroughly familiar with the kit's features and the installation process.

These instructions should be considered a permanent part of your accessory kit, and should remain with it even if your accessory equipped motorcycle is subsequently sold.

Parts Supplied:



1. Silencer bracket	1 off		
---------------------	-------	--	--

Warning

Fit only genuine Triumph accessories to those models approved by Triumph as listed in the associated Triumph fitting instructions. The accessory kits covered in this instruction are designed for use on specific models of Triumph motorcycle. The accessory kits and the models applicable are listed at the start of the instruction. They should never be fitted to any other Triumph model or to any other manufacturer's motorcycle. Fitting an accessory kit to a Triumph model not listed, or to any other manufacturer's motorcycle will affect the performance, stability and handling of the motorcycle. This may affect the rider's ability to control the motorcycle and could result in an accident causing severe injuries or death.

Warning

Always have Triumph approved parts, accessories and conversions fitted by a trained technician of an authorised Triumph dealer. The fitment of parts, accessories and conversions by a technician who is not of an authorised Triumph dealer may affect the handling, stability or other aspects of the motorcycle's operation which may result in loss of motorcycle control and an accident.

Warning

Make sure the motorcycle is supported. A correctly supported motorcycle will help prevent it from falling. An unstable motorcycle may fall, causing injury to the operator or damage to the motorcycle.

Warning

A torque wrench of known accurate calibration must be used when fitting this accessory kit. Failure to tighten any of the fasteners to the correct torque specification may affect motorcycle performance, handling and stability. This may result in loss of motorcycle control and an accident.

Warning

If the engine has recently been running, the exhaust system will be hot. Before working on or near the exhaust system, allow sufficient time for the system to cool, as touching any part of a hot exhaust could cause burn injuries.

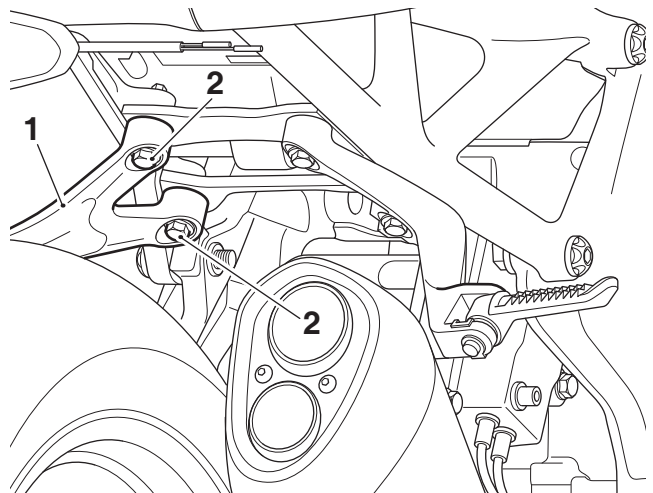
Note:

- Triumph offers a broad range of approved genuine accessories for your motorcycle. We cannot therefore cover all possible equipment variations in these instructions. For removal and installation of Triumph Genuine Accessories, always refer to the instructions supplied with the respective accessory kit. To obtain additional copies of any Triumph accessory instructions, visit www.triumphinstructions.com or contact your authorised Triumph dealer.

Notice

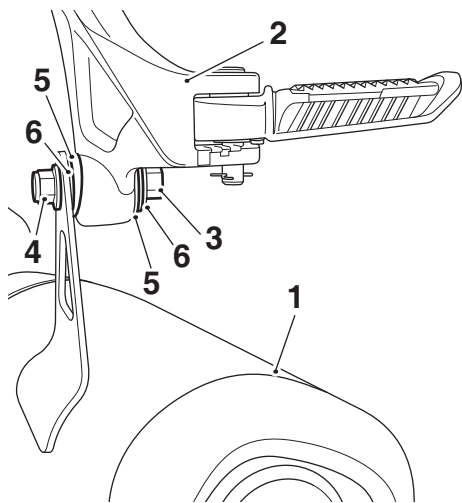
The accessory silencer bracket kit must only be used when a seat cowl is fitted to the motorcycle. When the accessory silencer bracket is fitted the rear footrests are removed making the motorcycle unsuitable to carry a passenger. Fitting the accessory silencer bracket to a motorcycle without a seat cowl fitted could result in the motorcycle being illegal for road use and lead to prosecution.

- Remove the left hand footrest hanger. Retain the footrest hanger and fixings for reuse if the motorcycle is to be returned to its original condition.



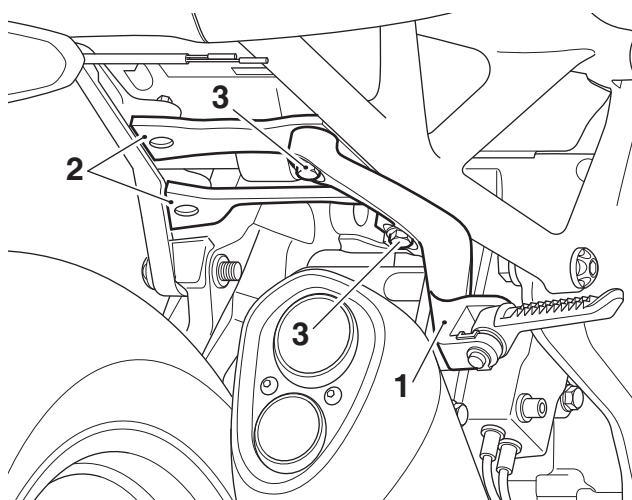
- Footrest hanger, left hand
- Fixings

- While supporting the silencer remove the nut securing the silencer to the right hand rear footrest hanger. Noting the position of the rubber bushes and sleeves, remove the fixing, sleeves and rubber bushes from the footrest hanger. Retain the fixing, nut, rubber bushes and sleeves for reuse.



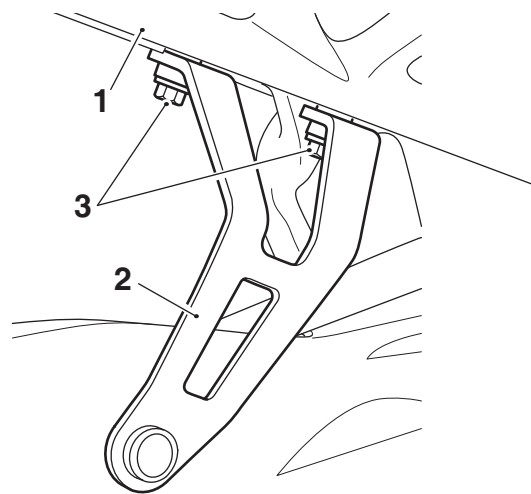
- Silencer
- Footrest hanger
- Fixing
- Nut
- Rubber bushes
- Sleeves

- Remove the right hand footrest hanger and subframe braces. Retain the fixings for reuse. Retain the footrest hanger and subframe braces for reuse if the motorcycle is to be returned to its original condition.



- Footrest hanger, right hand
- Subframe braces
- Fixings

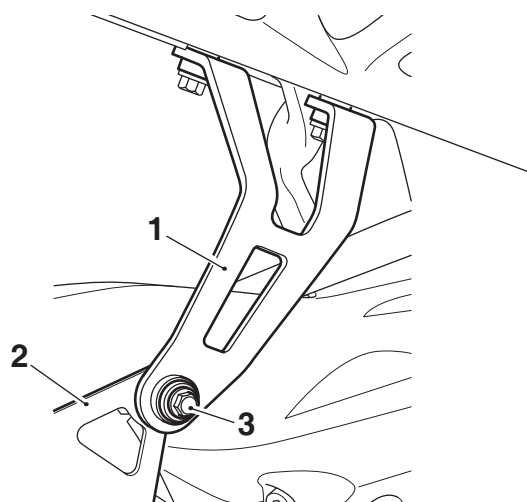
- Fit the silencer bracket from the kit on to the right hand side of the rear subframe in the orientation shown. Align the silencer bracket with footrest hanger fixing positions on the rear subframe and fit the original two fixings, as shown. Tighten the fixings to **27 Nm**.



- Rear subframe
- Silencer bracket
- Original fixings

Note:

- Lock nuts can be reused, providing resistance can be felt when the locking portion passes over the thread of the bolt or stud.
 - Always use the correct replacement lock nut as recommended in the Triumph catalogue.
- Position the silencer to the inner side of the silencer bracket, as shown. Fit the original rubber bushes, sleeves, fixing and nut. While holding the nut, tighten the fixing to **15 Nm**.



- Silencer bracket
- Silencer
- Fixing

- Fit the seat cowl provided with the motorcycle, as described in the Service Manual.

 **Warning**

When the rear footrests have been removed do not carry a passenger.

A passenger who is not able to use footrests will be unable to sit securely on the motorcycle and this may result in loss of motorcycle control and an accident.

 **Warning**

If, after fitting this accessory kit, you have any doubt about the performance of any aspect of the motorcycle, contact an authorised Triumph dealer and do not ride the motorcycle until the authorised dealer has declared it fit for use. Riding a motorcycle when there is any doubt as to any aspect of the performance of the motorcycle may result in loss of motorcycle control and an accident.

 **Warning**

Never ride an accessory-equipped motorcycle at speeds above 80 mph (130 km/h).

The presence of accessories will cause changes in the stability and handling of the motorcycle. Failure to allow for changes in motorcycle stability may result in loss of motorcycle control and an accident.

Remember that the 80 mph (130 km/h) limit will be reduced by the fitting of non-approved accessories, incorrect loading, worn tyres, overall motorcycle condition and poor road or weather conditions.

 **Warning**

The motorcycle must not be operated above the legal road speed limit except in closed-course conditions.

 **Warning**

Only operate this Triumph motorcycle at high speed in closed-course, on-road competition or on closed-course racetracks. High-speed operation should only be attempted by riders who have been instructed in the techniques necessary for high-speed riding and are familiar with the motorcycle's characteristics in all conditions.

High-speed operation in any other circumstances is dangerous and may result in loss of motorcycle control and an accident.