

Fitting Instructions:

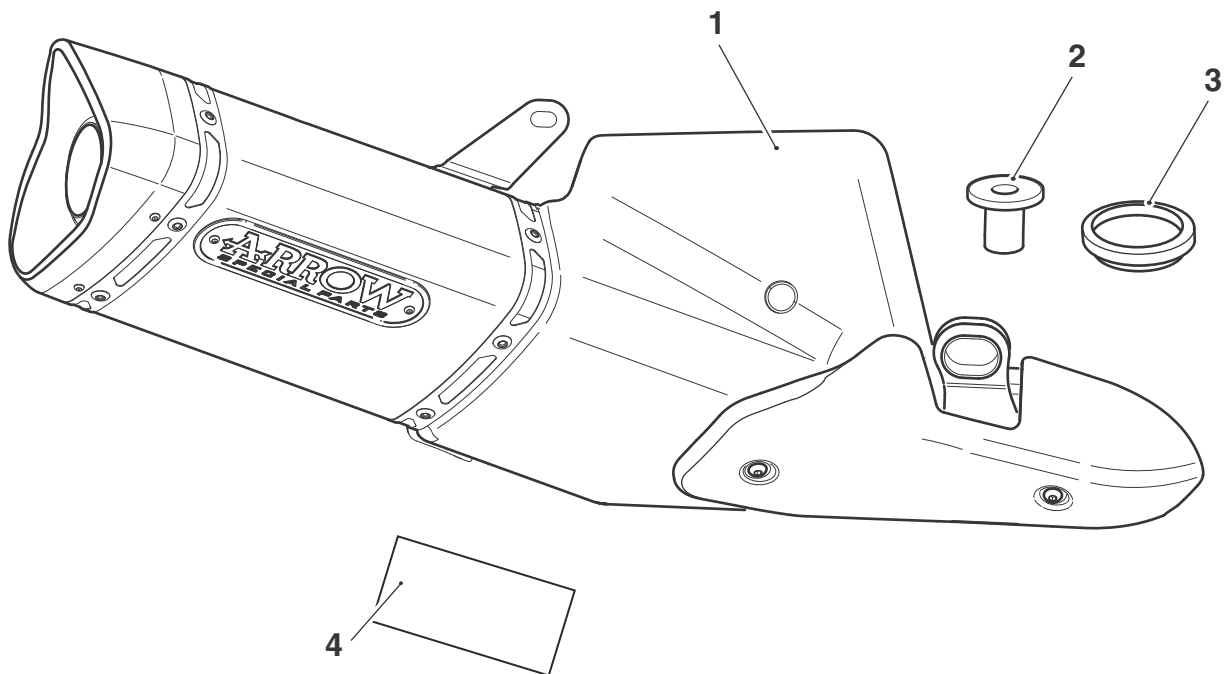
Street Triple Rx, Street Triple from VIN 560477 and Street Triple R from VIN 560477

A9600422 and A9600555

Thank you for choosing this Triumph genuine accessory kit. This accessory kit is the product of Triumph's use of proven engineering, exhaustive testing, and continuous striving for superior reliability, safety and performance.

Completely read all of these instructions before commencing the installation of the accessory kit in order to become thoroughly familiar with the kit's features and the installation process.

These instructions should be considered a permanent part of your accessory kit, and should remain with it even if your accessory-equipped motorcycle is subsequently sold.



Parts Supplied:

1. Arrow silencer assembly	1 off	3. Gasket	1 off
2. Flanged sleeve, M8 x 25.5 mm	1 off	4. Label, Engine Control Module (ECM) - California market only	1 off



Warning

This accessory kit is designed for use on Triumph Street Triple Rx, Street Triple from VIN 560477 and Street Triple R from VIN 560477 motorcycles only and should not be fitted to any other Triumph model or to any other manufacturer's motorcycle. Fitting this accessory kit to any other Triumph model or to any other manufacturer's motorcycle will affect the performance, stability and handling of the motorcycle. This may affect the rider's ability to control the motorcycle and could cause an accident.



Warning

Always have Triumph approved parts, accessories and conversions fitted by a trained technician of an authorised Triumph dealer. The fitment of parts, accessories and conversions by a technician who is not of an authorised Triumph dealer may affect the handling, stability or other aspects of the motorcycle's operation which may result in loss of motorcycle control and an accident.



Warning

Throughout this operation, ensure that the motorcycle is stabilised and adequately supported to prevent risk of injury from the motorcycle falling.



Warning

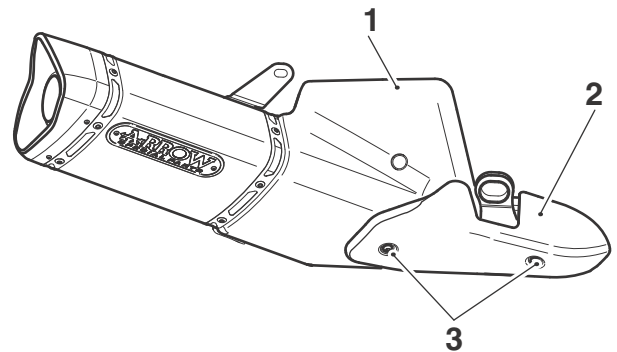
A torque wrench of known accurate calibration must be used when fitting this accessory kit. Failure to tighten any of the fasteners to the correct torque specification may result in loss of motorcycle control and an accident.



Warning

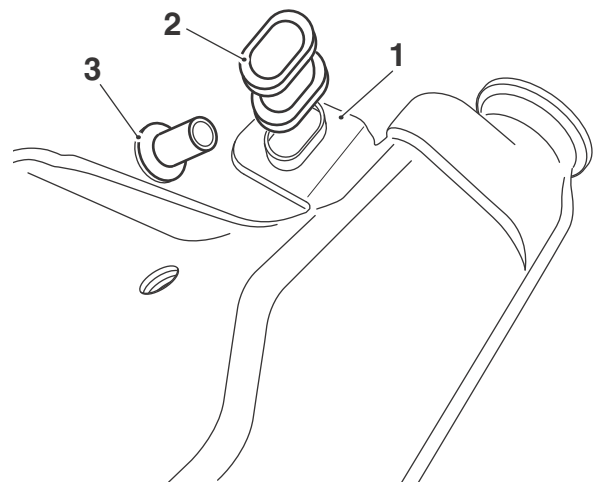
If the engine has recently been running, the exhaust system will be hot. Before working on or near the exhaust system, allow sufficient time for the system to cool, as touching any part of a hot exhaust could cause burn injuries.

1. Remove the rider's seat, as described in the Service Manual.
2. Collect the new silencer assembly from the kit. Remove the finisher from the silencer. Retain the finisher and fixings for re-use.



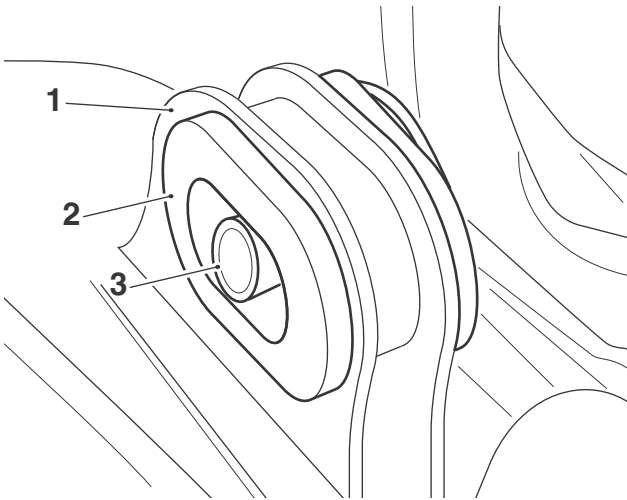
- 1. Silencer**
- 2. Finisher**
- 3. Fixings**

3. Remove the standard silencer from the motorcycle, as described in the Service Manual. Retain the silencer for use if the motorcycle is returned to original condition. Retain the fixings for re-use. Discard the gasket.
4. Remove the grommet and flanged sleeve from the silencer front mounting bracket. Retain the grommet for re-use. Retain the flanged sleeve if the motorcycle is to be returned to its original condition.



- 1. Silencer front mounting bracket**
- 2. Grommet**
- 3. Flanged sleeve**

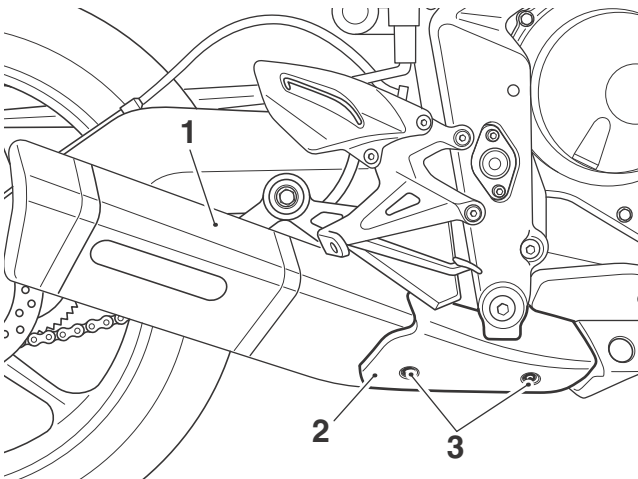
- Fit the grommet, and new flanged sleeve provided, into the Arrow silencer front mounting bracket.



- Arrow silencer front mounting bracket
- Grommet
- Flanged sleeve

Note:

- The procedure for fitting the new Arrow silencer is the same as that for the standard silencer.
- Using the original fixings and new gasket provided, fit the Arrow silencer as described in the Service Manual.
 - Using the fixings removed in step 1, refit the finisher to the silencer. Tighten the fixings to **5.5 Nm**.



1504

- Silencer
- Finisher
- Fixings

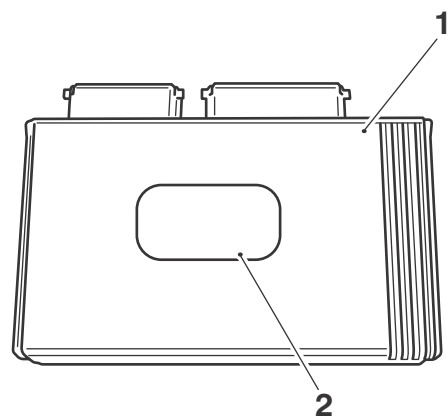
Note:

- The correct engine calibration must be downloaded to the motorcycle ECU prior to starting the engine. This information can be found on the 'Triumph On Line' dealer web site.
- Connect the Triumph diagnostic tool and download the correct engine calibration to the ECU following the procedure listed on the 'Triumph On Line' dealer website.

California Market

Note:

- The label within this accessory kit is to be attached to the ECM. The label has the part number for the engine tune that has been downloaded as previously described.
 - If the motorcycle is to be returned to its original condition, the label must also be removed from the ECM.
- Remove the ECM as described in the Service Manual.
 - Peel off the backing from the label and fit the label to the ECM as shown below.



- ECM
- Label

- Refit the ECM as described in the Service Manual.

All Markets

- Fit the rider's seat, as described in the Service Manual.



Warning

After fitting the accessory kit the motorcycle will exhibit new handling characteristics. Operate the motorcycle in a safe area free from traffic to gain familiarity with any new characteristics. Operation of the motorcycle when not familiar with any new handling characteristics may result in loss of motorcycle control and an accident.



Warning

If, after fitment of this accessory kit, you have any doubt about the performance of any aspect of the motorcycle, contact an authorised Triumph dealer and do not ride the motorcycle until the authorised dealer has declared it fit for use. Riding a motorcycle when there is any doubt as to any aspect of the performance of the motorcycle may result in loss of control of the motorcycle leading to an accident.



Warning

Never ride an accessory-equipped motorcycle at speeds above 80 mph (130 km/h).

The presence of accessories will cause changes in the stability and handling of the motorcycle. Failure to allow for changes in motorcycle stability may lead to loss of control or an accident.

Remember that the 80 mph (130 km/h) limit will be reduced by the fitting of non-approved accessories, incorrect loading, worn tyres, overall motorcycle condition and poor road or weather conditions.



Warning

The motorcycle must not be operated above the legal road speed limit except in closed-course conditions.



Warning

Only operate this Triumph motorcycle at high speed in closed-course, on-road competition or on closed-course race tracks. High speed operation should only be attempted by riders who have been instructed in the techniques necessary for high speed riding and are familiar with the motorcycle's characteristics in all conditions. High speed operation in any other circumstances is dangerous and will lead to loss of motorcycle control and an accident.