

Fitting Instructions:

Speed Triple up to VIN 713733, Speed Triple R up to VIN 713716

Speed 94 up to VIN 733009, Speed 94 R up to VIN 732132

A9600387

Speed Triple S from VIN 735438, Speed Triple R from VIN 735337

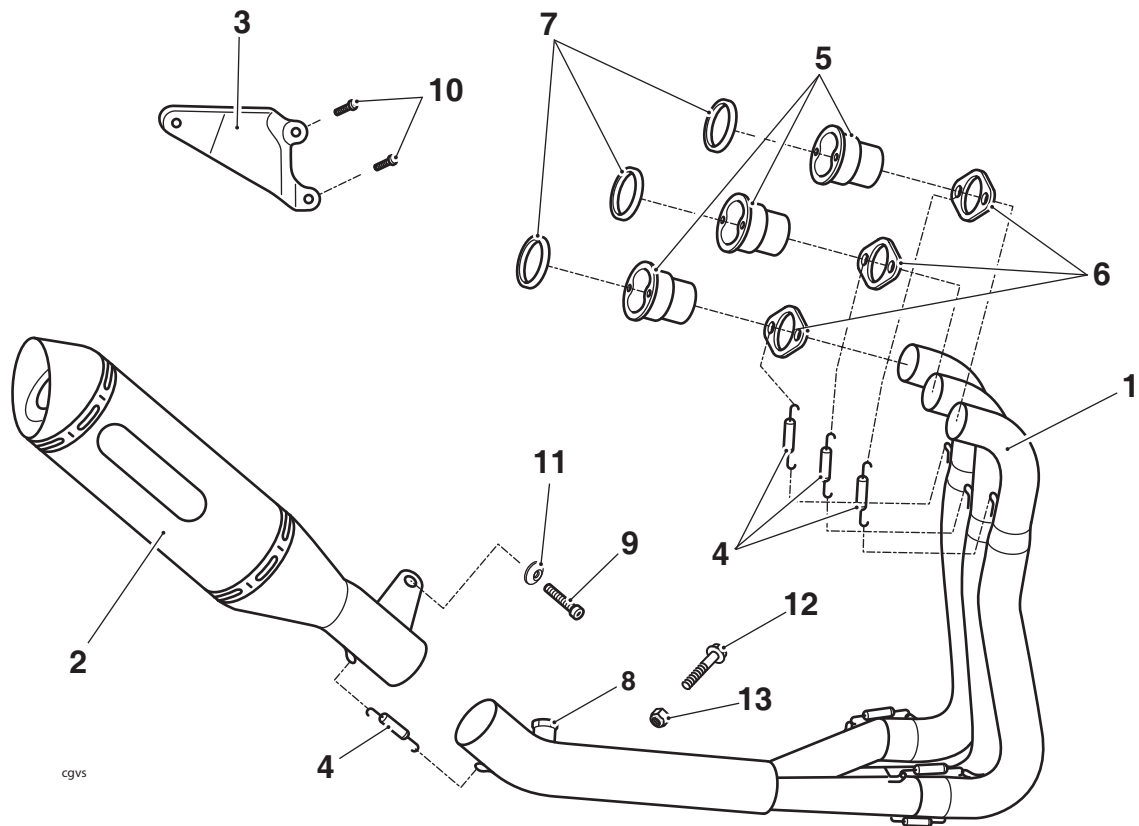
A9600700

Thank you for choosing this Triumph genuine accessory kit. This accessory kit is the product of Triumph's use of proven engineering, exhaustive testing, and continuous striving for superior reliability, safety and performance.

Completely read all of these instructions before commencing the installation of the accessory kit in order to become thoroughly familiar with the kit's features and the installation process.

These instructions should be considered a permanent part of your accessory kit, and should remain with it even if your accessory-equipped motorcycle is subsequently sold.

A9600387, A9600700



Parts Supplied:

1.	Downpipe collector assembly	1 off	8.	Oxygen sensor adaptor	1 off
2.	Silencer	1 off	9.	Screw, M8 x 25 mm	1 off
3.	Silencer support bracket	1 off	10.	Screw, M8 x 12 mm	2 off
4.	Spring	4 off	11.	Machined washer, M8	1 off
5.	Primary header bush	3 off	12.	Bolt, M8 x 43 mm	1 off
6.	Primary header flange	3 off	13.	Nut, M8	1 off
7.	Header gasket	3 off			

Notice

This accessory kit is for non-road use only. It is to be used solely during closed-course conditions. It is illegal to use a motorcycle fitted with this kit on public roads. If you use a motorcycle fitted with this kit on public roads, you may be prosecuted.



Warning

The accessory kits covered in this instruction are designed for use on specific models of Triumph motorcycle. The accessory kits and the models applicable are listed at the start of the instruction. They should not be fitted to any other Triumph model or to any other manufacturer's motorcycle. Fitting an accessory kit to a Triumph model not listed, or to any other manufacturer's motorcycle will affect the performance, stability and handling of the motorcycle. This may affect the rider's ability to control the motorcycle and could cause an accident.



Warning

Always have Triumph approved parts, accessories and conversions fitted by a trained technician of an authorised Triumph dealer. The fitment of parts, accessories and conversions by a technician who is not of an authorised Triumph dealer may affect the handling, stability or other aspects of the motorcycle's operation which may result in loss of motorcycle control and an accident.



Warning

Throughout this operation, ensure that the motorcycle is stabilised and adequately supported to prevent risk of injury from the motorcycle falling.



Warning

A torque wrench of known accurate calibration must be used when fitting this accessory kit. Failure to tighten any of the fasteners to the correct torque specification may result in loss of motorcycle control and an accident.



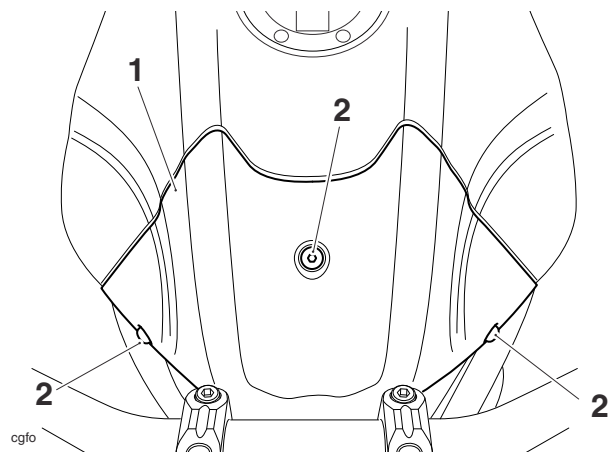
Warning

If the engine has recently been running, the exhaust system will be hot. Before working on or near the exhaust system, allow sufficient time for the system to cool, as touching any part of a hot exhaust system could cause burn injuries.

Note:

- Before fitting this accessory kit, ensure the owner of the motorcycle has been informed of the warnings contained in these instructions.
- Ensure that the Triumph Speed Triple Service Manual is available for reference during the fitting of this accessory kit.

1. Remove the seat, as described in the Service Manual.
2. Release the three fixings and remove the front panel from the fuel tank. Retain the front panel and its fixings for reuse.



1. Front panel

2. Fixings

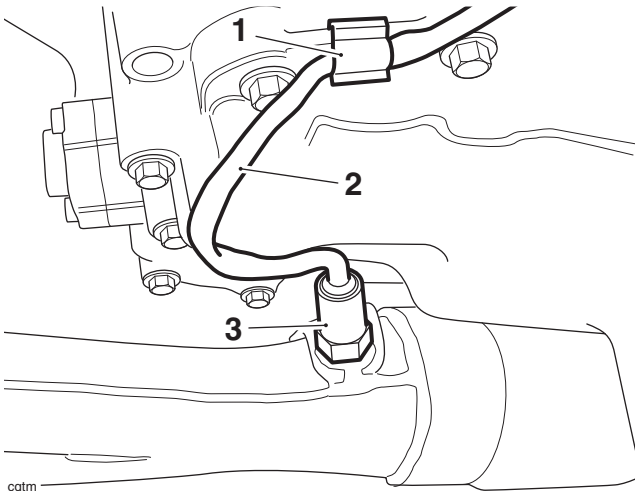
3. Disconnect the battery, negative (black) lead first.
4. Remove the oil cooler, as described in the Service Manual.
5. Remove the radiator, as described in the Service Manual.

Note:

- Note the routing of the oxygen sensor harness for installation.
- 6. Locate and disconnect the oxygen sensor multiplug from the wiring harness.

7. **Speed Triple up to VIN 713733, Speed Triple R up to VIN 713716, Speed 94 up to VIN 733009, Speed 94 R up to VIN 732132.**

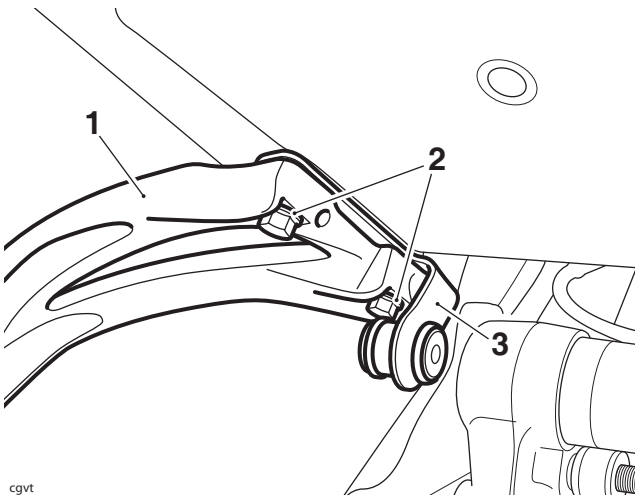
Detach the oxygen sensor harness from its clip on the crankcase.



cgtm

1. **Clip**
2. **Harness**
3. **Oxygen sensor**

8. Remove the oxygen sensor from the exhaust and retain for reuse.
9. Remove the exhaust system, as described in the Service Manual. Retain the exhaust system if the motorcycle is to be returned to its original condition. Retain the header M8 nuts for reuse.
10. Remove the left hand rear footrest hanger and the bracket for the exhaust intermediate pipe. Retain the bracket if the motorcycle is to be returned to its original condition.

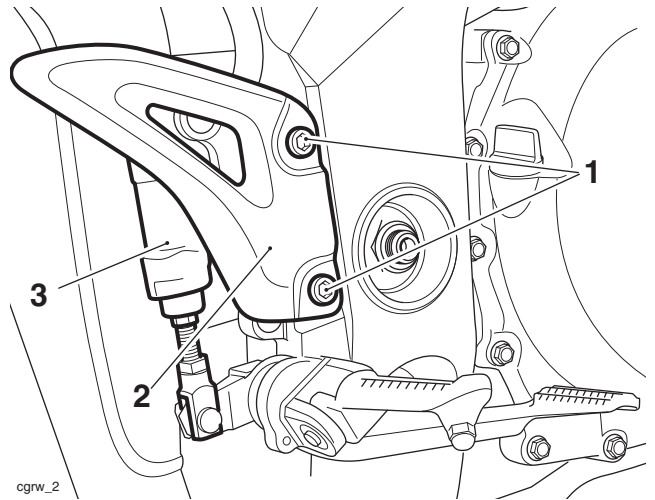


cgvt

1. **Footrest hanger, left hand side**
2. **Fixings**
3. **Exhaust bracket**

11. Refit the left hand footrest hanger and tighten its fixings to **27 Nm**.

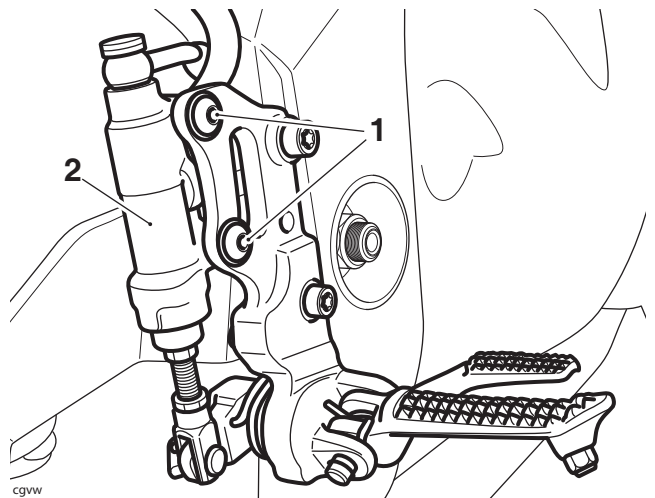
12. Remove the screws securing the right hand heel guard, control plate and brake master cylinder assembly to the frame.



cgrw_2

1. **Screws**
2. **Heel guard**
3. **Master cylinder**

13. Temporarily refit the control plate and master cylinder assembly to the frame.
14. Detach the master cylinder from the control plate and position aside.

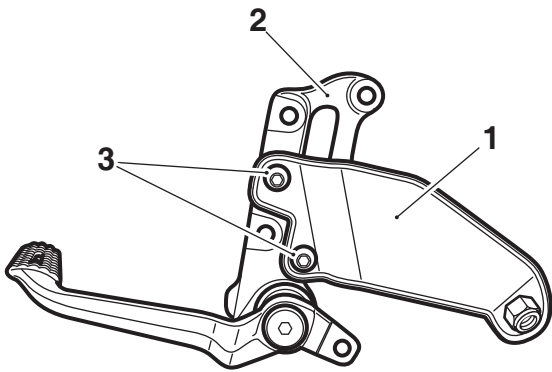


cgvw

1. **Fixings**
2. **Master cylinder**

15. Remove the control plate from the frame.

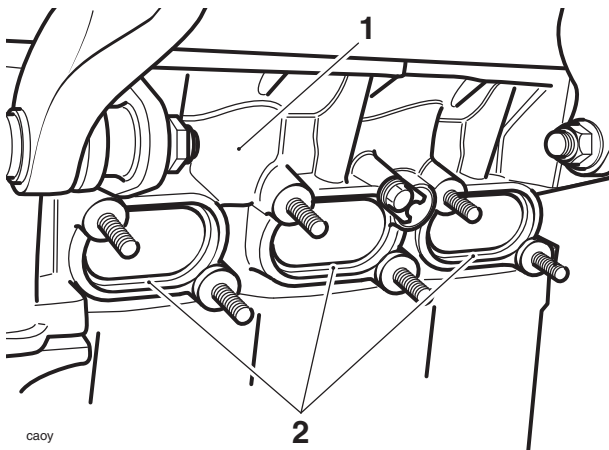
16. Fit the silencer bracket from the kit to the back of the control plate as shown below. Tighten the M8 x 12 mm screws from the kit to **15 Nm**.



cgvv

- 1. Silencer bracket
- 2. Control plate
- 3. M8 x 12 mm screws

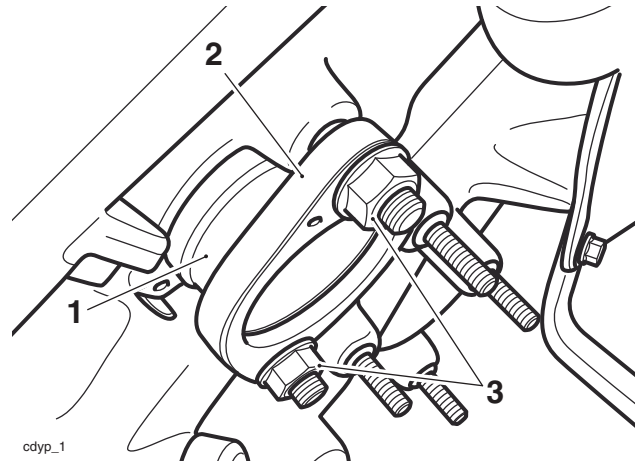
17. Fit the control plate and bracket assembly to the frame. Do not fully tighten the fixings at this stage.
18. Attach the master cylinder to the control plate and tighten the fixings to **18 Nm**.
19. Remove the control plate fixings, fit the heel guard, refit the fixings and tighten to **27 Nm**.
20. Remove and discard the header gaskets from the cylinder head. Fit the header gaskets from the kit with their tabs towards the engine.



caoy

- 1. Cylinder head
- 2. Gaskets

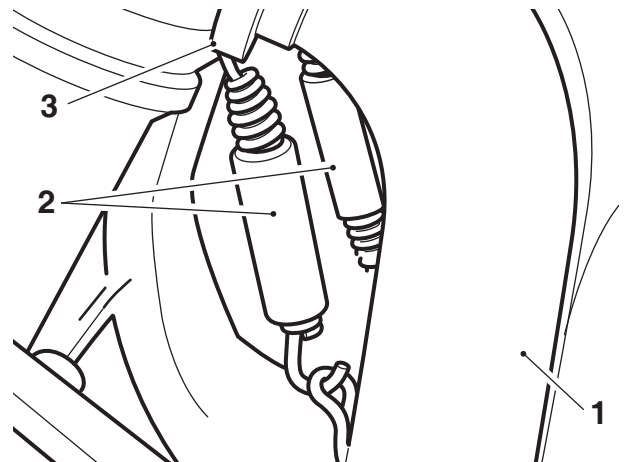
21. Fit the three primary header bushes to the cylinder head and loosely secure in the orientation shown using the primary header flanges from the kit and the original header M8 nuts.



cdyp_1

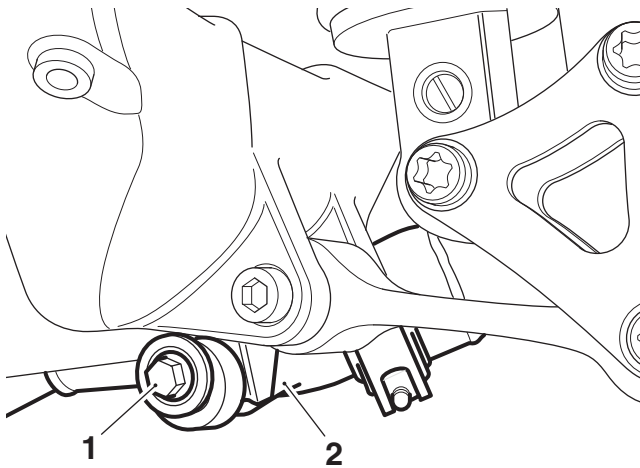
- 1. Primary header bush
- 2. Primary header flange
- 3. M8 nut

22. Position the downpipe collector assembly to the underside of the engine and insert the downpipe ends fully into the primary header bushes. Secure with three of the springs from the kit.



- 1. Downpipe collector assembly
- 2. Spring
- 3. Spring mounting hole position

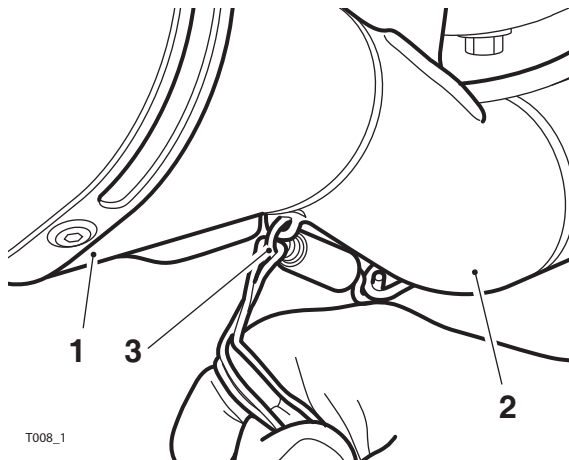
23. Secure the downpipe collector assembly to its mounting point on the frame with the M8 x 43 mm bolt and M8 nut from the kit. Do not fully tighten at this stage.



cgtn

- 1. M8 x 43 mm bolt
- 2. Downpipe collector assembly

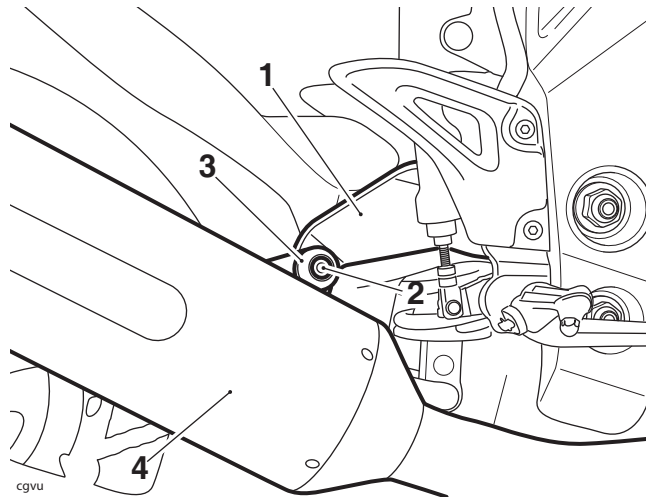
24. Position the silencer onto the downpipe collector assembly and secure with the spring supplied. A length of unused electrical cable or string may assist the fitment of the spring, as shown below.



T008_1

- 1. Silencer
- 2. Downpipe collector assembly
- 3. Spring

25. Secure the silencer to its mounting bracket with the M8 x 25 mm cap screw and machined washer from the kit. Do not fully tighten at this stage.



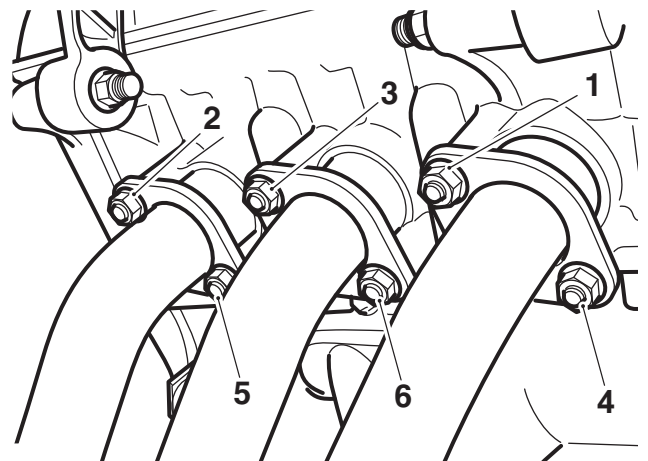
cgvu

- 1. Mounting bracket
- 2. M8 x 25 mm cap screw
- 3. Machined washer
- 4. Silencer

26. With a soft-face mallet gently tap the downpipes to ensure they are seated correctly in the header bushes.

27. Tighten the collector pipe mounting fixings to the cylinder head in the following sequence.

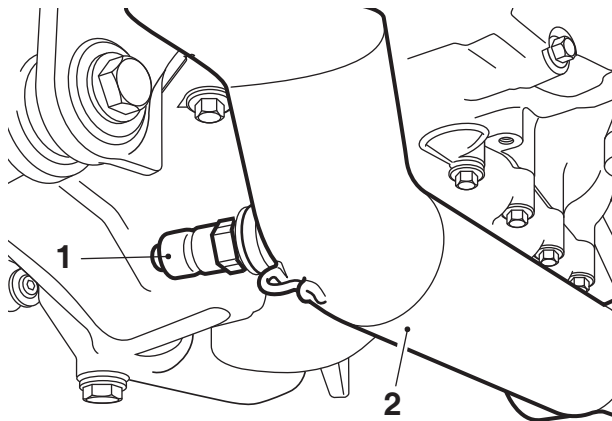
- Tighten nuts 1 to 6 to **23 Nm** in the order shown below.
- Retighten nuts 1 to 3 to **23 Nm** in the order shown below.



Exhaust to Cylinder Head Tightening Sequence

- 28. Check that the exhaust system is correctly aligned with the frame.
- 29. Tighten the downpipe collector assembly to frame fixing to **25 Nm**.
- 30. Tighten the silencer fixing to **15 Nm**.

31. Remove the blanking plug from the brass adapter in the exhaust, fit the oxygen sensor and tighten it to **25 Nm**.



TO011_1

- 1. Oxygen sensor**
2. Exhaust

32. Route the oxygen sensor harness as noted for removal and connect to the main harness.
33. **Speed Triple up to VIN 713733, Speed Triple R models up to VIN 713716, Speed 94 up to VIN 733009, Speed 94 R up to VIN 732132.** Ensure the oxygen sensor harness is attached to its clip on the crankcase.
34. Refit the oil cooler, as described in the Service Manual.
35. Refit the radiator, as described in the Service Manual.
36. Reconnect the battery, positive (red) lead first and tighten the battery terminals to **4.5 Nm**.
37. Refit the front panel to the fuel tank and secure with the original fixings, as described in the Service Manual.

Note:

- **The correct engine calibration must be downloaded to the motorcycle ECU prior to starting the engine. This information can be found on the 'Triumph On Line' dealer web site.**
38. Connect the Triumph Diagnostic Tool and download the correct engine calibration to the ECU following the procedure on the 'Triumph On Line' dealer web site.
39. Refit the seat, as described in the Service Manual.

Suspension Settings

Note:

- **The suspension setting details below apply to Speed Triple up to VIN 713733, Speed Triple R models up to VIN 713716, Speed 94 up to VIN 733009, Speed 94 R up to VIN 732132, Speed Triple S from VIN 735438 only.**
- **It is not necessary to change any of the original suspension settings for Speed Triple R from VIN 735337.**

Due to the significant changes to the motorcycle when kit A9600387 or A9600700 is fitted, the suspension setting will need to be changed to maintain the motorcycle's handling characteristics.

For a solo rider, the table below shows the recommended setting for the rear suspension. The front suspension should be set to the standard setting for a solo rider as described in the Owner's Handbook.

Warning

Ensure that the correct balance between front and rear suspension is maintained. Suspension imbalance could significantly change handling characteristics leading to loss of control and an accident. Refer to the chart below for further information or consult your dealer.

Loading	Rear	
	Rebound Damping ¹	Compression Damping ¹
Standard	0.5	2.0

¹ Number of adjuster turns anti-clockwise from the fully clockwise position.

For rider and passenger suspension settings and for adjustment methods, refer to the Owner's Handbook.



Warning

If, after fitment of this accessory kit, you have any doubt about the performance of any aspect of the motorcycle, contact an authorised Triumph dealer and do not ride the motorcycle until the authorised dealer has declared it fit for use. Riding a motorcycle when there is any doubt as to any aspect of the performance of the motorcycle may result in loss of control of the motorcycle leading to an accident.



Warning

Never ride an accessory-equipped motorcycle at speeds above 80 mph (130 km/h). The presence of accessories will cause changes in the stability and handling of the motorcycle. Failure to allow for changes in motorcycle stability may lead to loss of control or an accident. Remember that the 80 mph (130 km/h) limit will be reduced by the fitting of non-approved accessories, incorrect loading, worn tyres, overall motorcycle condition and poor road or weather conditions.



Warning

The motorcycle must not be operated above the legal road speed limit except in closed-course conditions.



Warning

Only operate this Triumph motorcycle at high speed in closed-course, on-road competition or on closed-course race tracks. High-speed operation should only be attempted by riders who have been instructed in the techniques necessary for high-speed riding and are familiar with the motorcycle's characteristics in all conditions. High-speed operation in any other circumstances is dangerous and will lead to loss of motorcycle control and an accident.