

# Fitting Instructions:

## Street Triple

### Arrow Slip on Silencers - A9600200



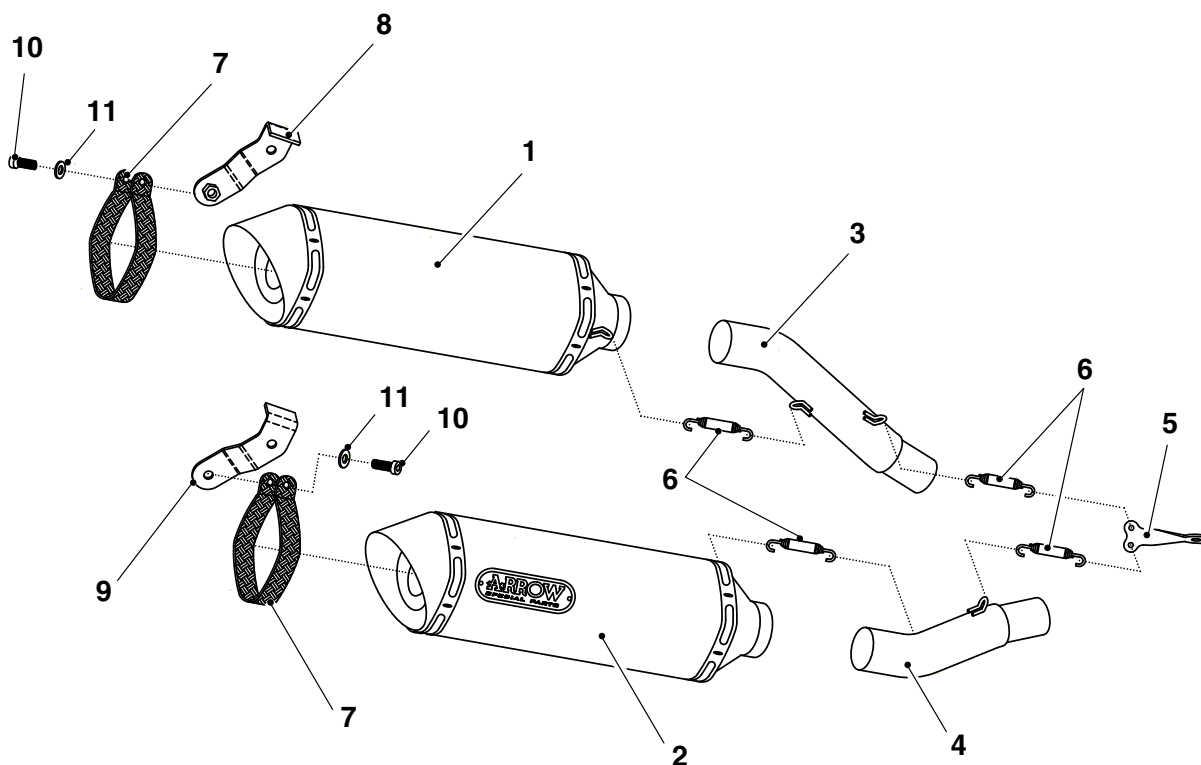
Thank you for choosing this Triumph genuine accessory kit. This accessory kit is the product of Triumph's use of proven engineering, exhaustive testing, and continuous striving for superior reliability, safety and performance.

Completely read all of these instructions before commencing the installation of the accessory kit in order to become thoroughly familiar with the kit's features and the installation process.

These instructions should be considered a permanent part of your accessory kit, and should remain with it even if your accessory equipped motorcycle is subsequently sold.

### Warning

This accessory kit is designed for use on Triumph Street Triple motorcycles only and should not be fitted to any other Triumph model or to any other manufacturer's motorcycle. Fitting this accessory kit to any other Triumph model or to any other manufacturer's motorcycle will affect the performance, stability and handling of the motorcycle. This may affect the riders ability to control the motorcycle and could cause an accident.



### Parts Supplied:

1. Silencer, LH .....	1 off	7. Support strap .....	2 off
2. Silencer, RH .....	1 off	8. Silencer bracket, LH .....	1 off
3. Mid Pipe section, LH .....	1 off	9. Silencer bracket, RH .....	1 off
4. Mid pipe section, RH .....	1 off	10. Screw, M8 x 20 .....	2 off
5. Spring anchor bracket .....	1 off	11. Washer, M8 .....	2 off
6. Spring .....	4 off		



### Warning

Always have Triumph approved parts, accessories and conversions fitted by a trained technician of an authorised Triumph dealer. The fitment of parts, accessories and conversions by a technician who is not of an authorised Triumph dealer may affect the handling, stability or other aspects of the motorcycles operation which may result in loss of motorcycle control and an accident.



### Warning

The Arrow silencers are covered by a twelve month manufacturers warranty. Triumph warranty standard terms and conditions are not affected by the fitment of the Street triple. Arrow silencers.



### Warning

Throughout this operation, ensure that the motorcycle is stabilised and adequately supported on a paddock stand to prevent risk of injury from the motorcycle falling.



### Warning

A torque wrench of known accurate calibration must be used when fitting this accessory kit. Failure to tighten any of the fasteners to the correct torque specification may result in loss of motorcycle control and an accident.



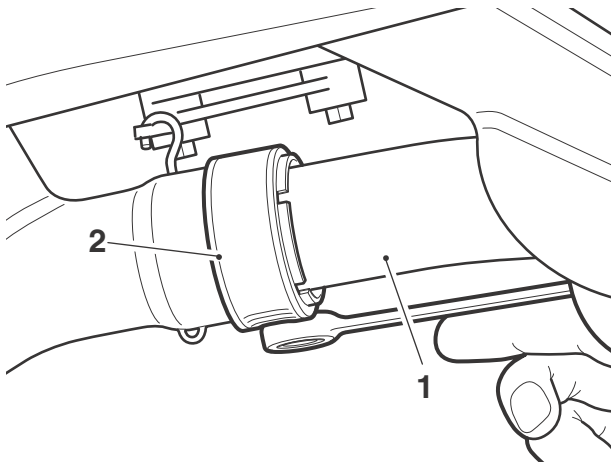
### Warning

If the engine has recently been running, the exhaust system will be hot. Before working on or near the exhaust system, allow sufficient time for the system to cool, as touching any part of a hot exhaust could cause burn injuries.

#### Note:

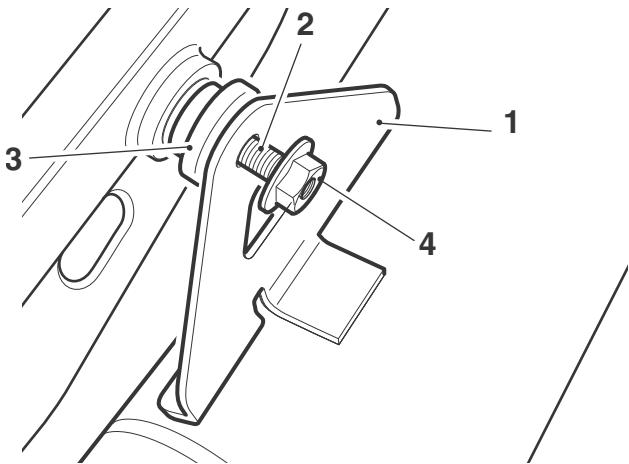
- **Before fitting this accessory kit, ensure the owner of the motorcycle has been informed of the Warnings contained in these instructions.**
- **Ensure that the Triumph Street Triple Service Manual is available for reference during the fitting of this accessory kit.**

1. Remove the seat and rear bodywork as described in the service manual.
2. Loosen the left hand silencer pipe clamp screw.



1. Silencer pipe
2. Clamp

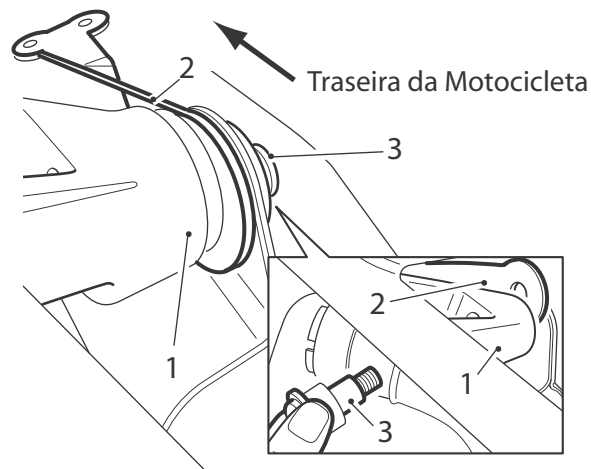
3. Remove the left hand main silencer fixing. The screw and inner spacer (if fitted) will remain captive in the rear subframe. Retain the nut and outer spacer (if fitted) for reuse.



1. Silencer
2. Screw
3. Outer spacer (if fitted)
4. Nut

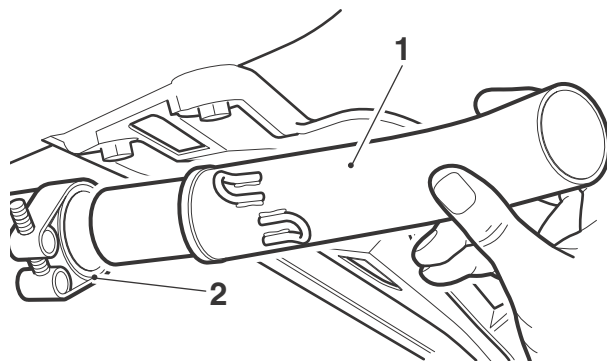
4. Remove the left hand silencer.
5. Repeat steps 2 to 4 for the right hand silencer. Retain both silencers if the motorcycle is to be returned to its original condition.
6. Remove the intermediate pipe to rear subframe fixing. Retain the fixing for reuse.

7. Position the spring anchor bracket provided between the intermediate pipe and rear subframe mounting point. Retain with the original fixing.



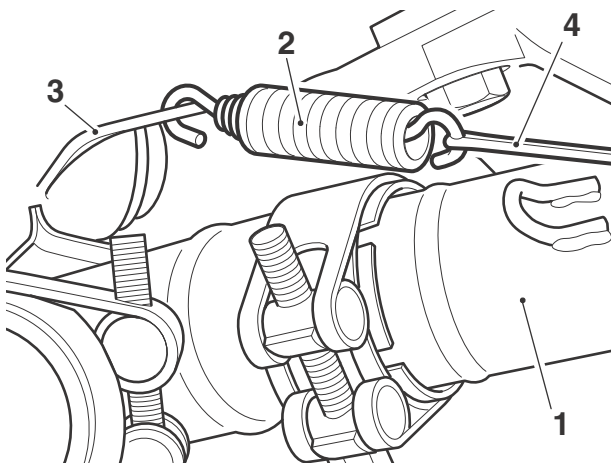
1. Rear subframe mounting point
2. Spring anchor bracket
3. Fixing

8. Tighten the fixing to **22 Nm**.
9. Fit the new right hand mid pipe section. Ensure it is inserted fully into the intermediate pipe. Do not tighten the clamp screw at this stage.



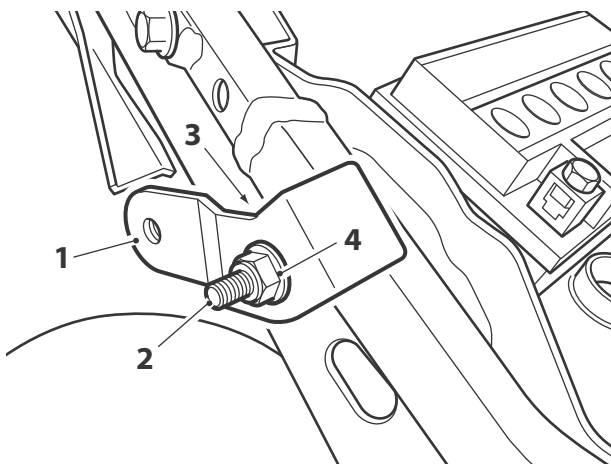
1. Mid pipe section
2. Intermediate pipe

10. Attach a spring between the spring anchor bracket and mid pipe section to secure the pipe, as shown. A length of unused electrical cable may assist fitment of the spring.



- 1. Mid pipe section
- 2. Spring
- 3. Spring anchor bracket
- 4. Electrical cable

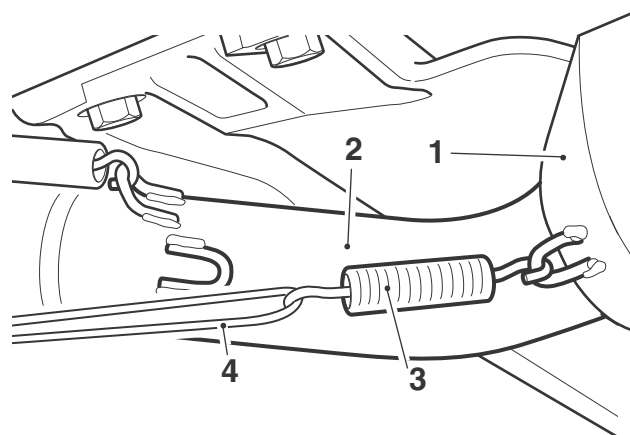
11. Fit the new right hand silencer bracket in the orientation shown. Secure to the original screw which remains captive in the subframe with the original nut, and if fitted, spacer. Do not tighten the fixings at this stage.



- 1. Silencer bracket, right hand
- 2. Screw
- 3. Outer spacer (if fitted)
- 4. Nut

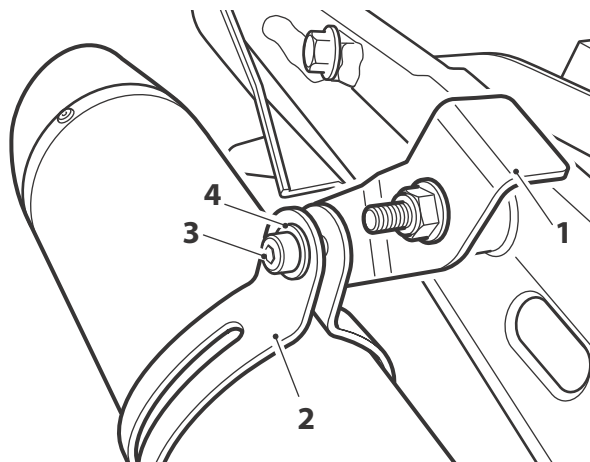
12. Slide the silencer support strap onto the silencer body.

13. Fit the silencer to the mid pipe section and secure with a spring. A length of unused electrical cable may assist fitment of the spring, as shown.



- 1. Silencer
- 2. Mid pipe section
- 3. Spring
- 4. Electrical cable

14. Align the silencer support strap with the silencer bracket and secure with the new screw and washer. Do not fully tighten the fixing at this stage.



- 1. Silencer bracket, right hand
- 2. Support strap
- 3. Screw
- 4. Washer

15. Repeat steps 9 to 14 for the left hand silencer arrangement.
16. Check that both silencers and mid pipe sections are aligned correctly and do not foul any other motorcycle component.
17. Tighten both support strap fixings to **9 Nm**. Tighten both silencer bracket fixings to **15 Nm**. Tighten both intermediate pipe clamp screws to **10 Nm**.
18. Refit the rear bodywork and seat as described in the service manual.

---

**Note:**

- **The correct engine calibration must be downloaded to the motorcycle ECU prior to starting the engine. This information can be found on the 'Triumph On Line' dealer web site.**
19. Connect the Triumph Diagnostic Tool and download the correct engine calibration to the ECU following the procedure listed on the 'Triumph On Line' dealer web site.
  20. Remove the paddock stand.



### **Warning**

After this Arrow exhaust accessory kit has been fitted by an authorised Triumph dealer, the performance of the motorcycle will be altered, if you have any doubt about the performance of any aspect of the motorcycle, contact an authorised Triumph dealer and do not ride the motorcycle until the authorised dealer has declared it fit for use. Riding a motorcycle when there is any doubt as to any aspect of the performance of the motorcycle may result in loss of control of the motorcycle leading to an accident.



### **Warning**

After fitting the accessory kit the motorcycle will exhibit new handling characteristics. Operate the motorcycle in a safe area free from traffic to gain familiarity with any new characteristics. Operation of the motorcycle when not familiar with any new handling characteristics may result in loss of motorcycle control and an accident.



### **Warning**

The motorcycle must not be operated above the legal road speed limit except in closed course conditions.



### **Warning**

Only operate this Triumph motorcycle at high speed in closed-course on road competition or on closed course racetracks. High speed operation should only be attempted by riders who have been instructed in the techniques necessary for high speed riding and are familiar with the motorcycle's characteristics in all conditions.

High speed operation in any other circumstances is dangerous and will lead to loss of motorcycle control and an accident.