



Accessory Fitting Instructions

Thank you for choosing this Triumph genuine accessory kit. This accessory kit is the product of Triumph's use of proven engineering, exhaustive testing, and continuous striving for superior reliability, safety and performance.

Completely read all of these instructions before commencing the installation of the accessory kit in order to become thoroughly familiar with the kit's features and the installation process.

These instructions should be considered a permanent part of your accessory kit, and should remain with it even if your accessory equipped motorcycle is subsequently sold.

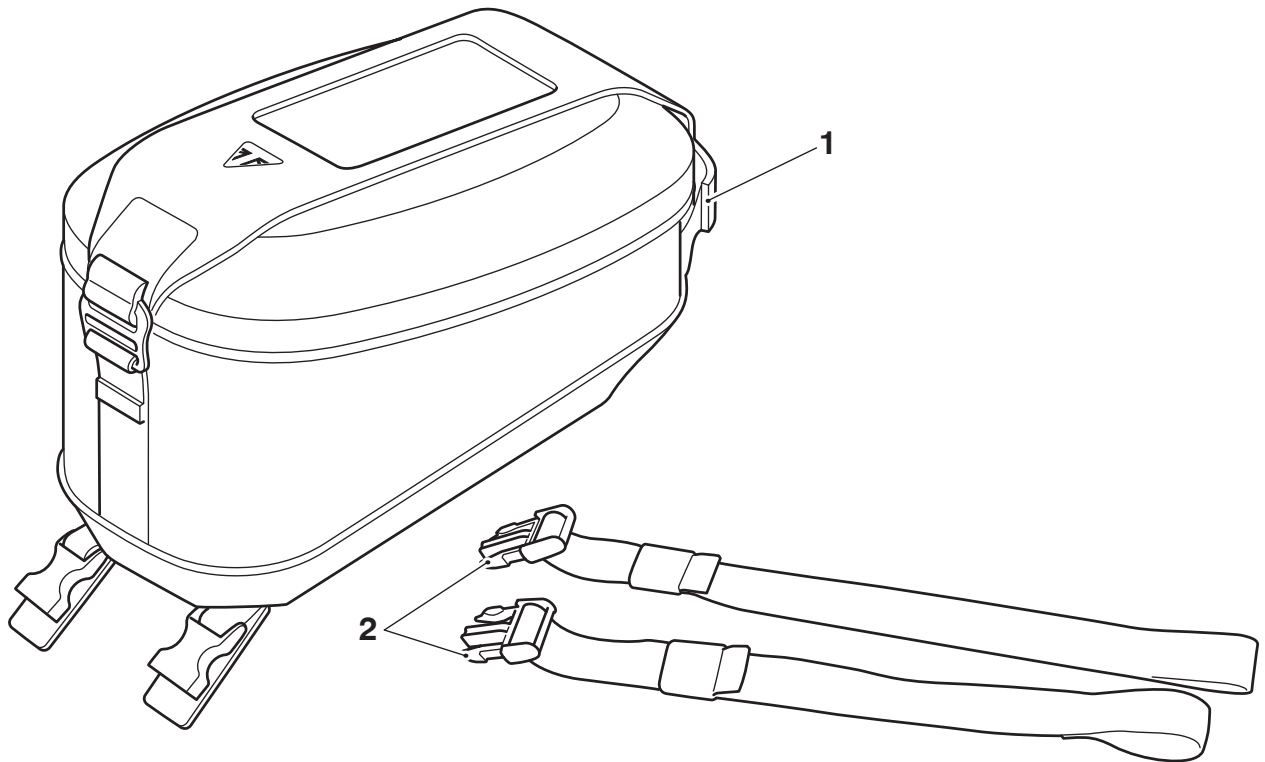
Tank Bag, 12L	
Kit Number	Models
A9518102	Street Twin from VIN 915136, Speed Twin 900, Street Scrambler from VIN 914448, Scrambler 900, Scrambler 1200 XC, Scrambler 1200 XE to VIN BN8495
Tank Bag Harness Kit	
Kit Number	Models
A9518113	Street Twin from VIN 915136, Speed Twin 900, Street Scrambler from VIN 914448, Scrambler 900
Tank Bag Front Strap	
Kit Number	Models
A9518110	Scrambler 1200 XC, Scrambler 1200 XE to VIN BN8495
A9518115	Scrambler 1200 XC, Scrambler 1200 XE to VIN BN8495

NOTICE

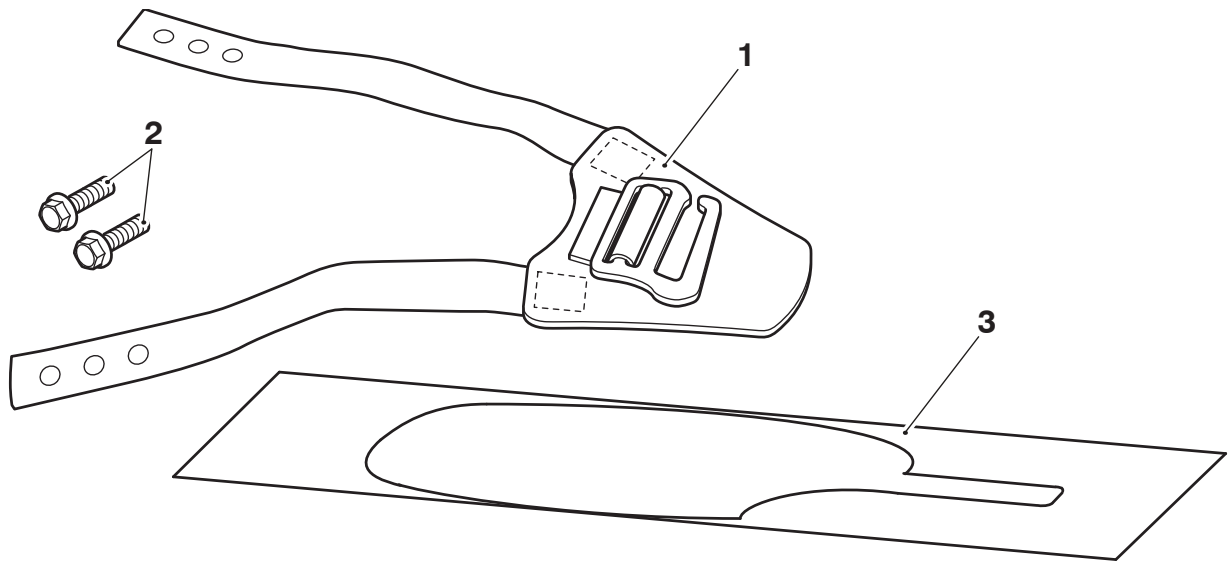
This tank bag is not to be used on Chrome Edition models.

Parts supplied

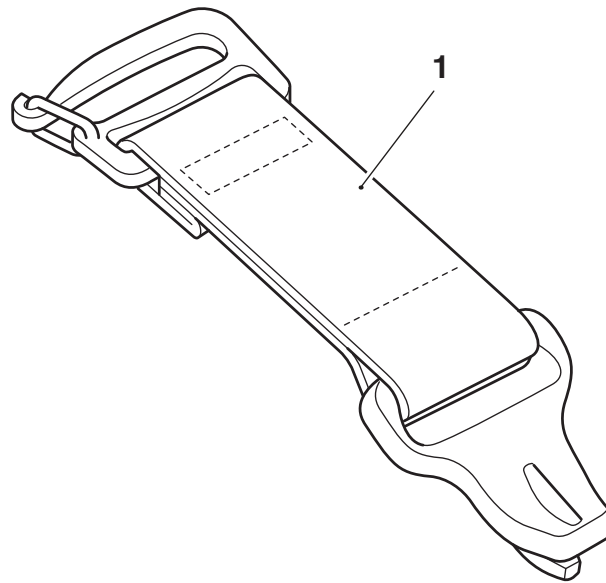
A9518102



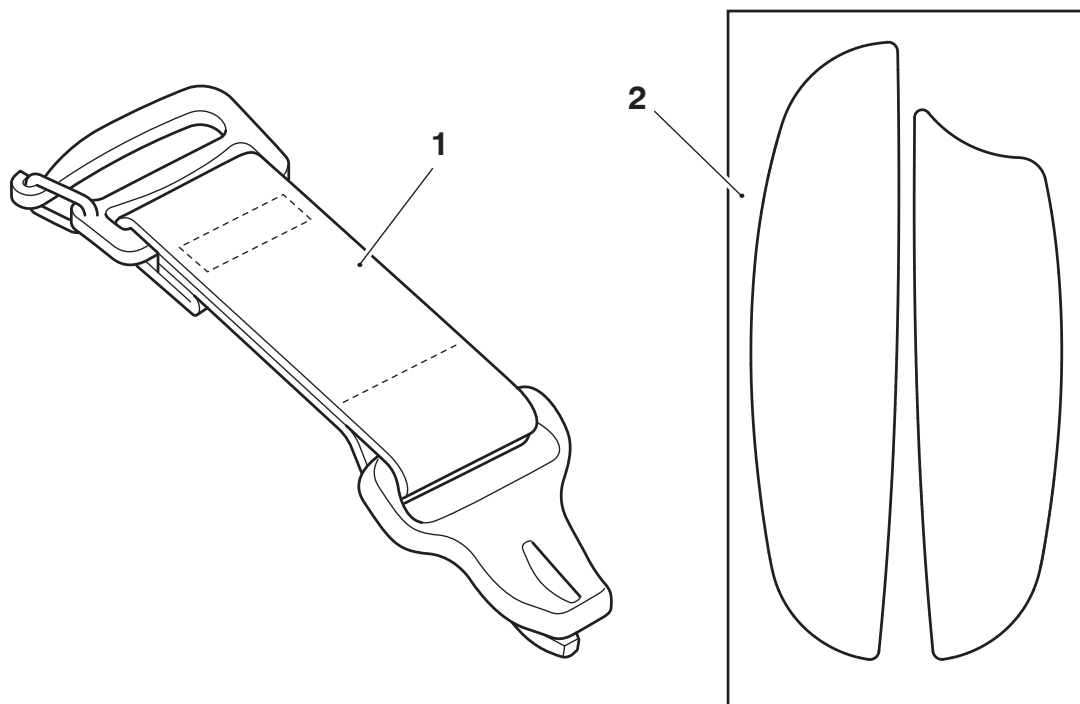
1. Tank Bag, Waxed cotton	1 off	2. Rear mounting strap	1 off
---------------------------	-------	------------------------	-------



1. Tank Bag harness	1 off	3. Protective film	1 off
2. Screw, M6 x 20 mm	2 off		



1. Tank Bag front strap	1 off
-------------------------	-------



1. Tank Bag front strap	1 off	2. Protective film	1 off
-------------------------	-------	--------------------	-------

⚠ DANGER

Do not use a mobile phone or adjust any GPS device while the motorcycle is in motion. Telephone calls, texting or any attempt to use your mobile device for any purpose while riding the motorcycle is dangerous. Failure to follow the advice above will result in serious injury or death.

⚠ WARNING

Fit only genuine Triumph accessories to those models approved by Triumph as listed in the associated Triumph fitting instructions.

The accessory kits covered in this instruction are designed for use on specific models of Triumph motorcycle. The accessory kits and the models applicable are listed at the start of the instruction. They should never be fitted to any other Triumph model or to any other manufacturer's motorcycle.

Fitting an accessory kit to a Triumph model not listed, or to any other manufacturer's motorcycle, will affect the performance, stability and handling of the motorcycle.

Failure to follow the advice above may lead to loss of motorcycle control which could result in serious injury or death.

⚠ WARNING

Always have Triumph approved parts, accessories and conversions fitted by a competent person with the specialist knowledge and technical understanding of motorcycles, such as an authorised Triumph dealer.

The fitment of parts, accessories and conversions by a person without the specialist knowledge and technical understanding of motorcycles may affect the handling, stability or other aspects of the motorcycle's operation.

Failure to follow the advice above may lead to loss of motorcycle control which could result in serious injury or death.

⚠ WARNING

A torque wrench of known accurate calibration must be used when fitting this accessory kit.

Failure to tighten any of the fasteners to the correct torque specification may affect motorcycle performance, handling and stability.

Failure to follow the advice above may lead to loss of motorcycle control which could result in serious injury or death.

⚠ WARNING

Make sure the motorcycle is stabilised and adequately supported.

Do not support the motorcycle on any ancillary component, the exhaust system or any other non structural parts of the motorcycle frame.

A correctly supported motorcycle will help prevent it from falling.

An unstable motorcycle may fall resulting in motorcycle damage, serious injury or death.

NOTICE

Triumph offers a broad range of approved genuine accessories for your motorcycle.

We cannot therefore cover all possible equipment variations in these instructions. For removal and installation of Triumph Genuine Accessories, always refer to the instructions supplied with the respective accessory kit.

To obtain additional copies of any Triumph accessory instructions, visit www.triumphinstructions.com or contact your authorised Triumph dealer.

Fitment of Mounting Harness

Protective Film Installation

Street Twin from VIN 915136, Speed Twin 900, Street Scrambler from VIN 914448 and Scrambler 900 Models only

⚠ CAUTION

Before using any degreasing or cleaning agents, always test a small area of paintwork first, especially if applying to fresh paintwork. Some degreasing or cleaning agents may damage the paintwork.

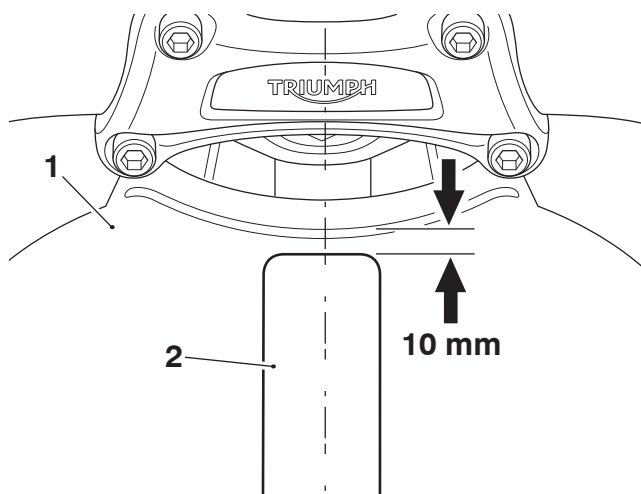
1. Clean the fuel tank thoroughly by using a suitable panel cleaner to remove any polish or grease from the painted surface.
2. Spray clean water onto the fuel tank to be protected.

NOTICE

With clean hands, spray water onto your fore finger and thumb before peeling any film off the backing paper. This will prevent fingerprints appearing on the adhesive surface of the film.

3. Peel the protective film from the backing paper while continually spraying clean water on to the adhesive side of the film.

- Lay the protective film on to the fuel tank, starting with the narrow strip at the front, making sure the protective film is positioned centrally on the fuel tank and the front edge of the protective film is 10 mm from the front of the fuel tank, as shown.



- Fuel tank
- Protective film

NOTICE

For best results, push firmly over the protective film using a semi-rigid film squeegee that will not mark the surface. Make sure the squeegee is wet to allow it to glide on the protective film surface.

NOTICE

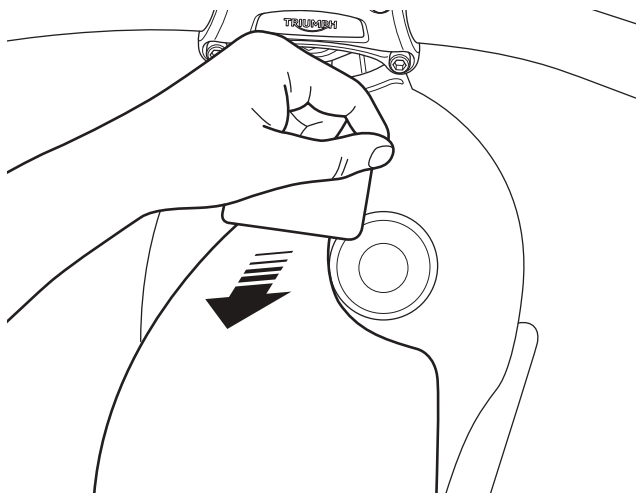
When dealing with curved surfaces, tension will need to be applied for the film to take to the contours of the surface. Pull gently in the direction required and the film will naturally take to the curvature of the fuel tank.

NOTICE

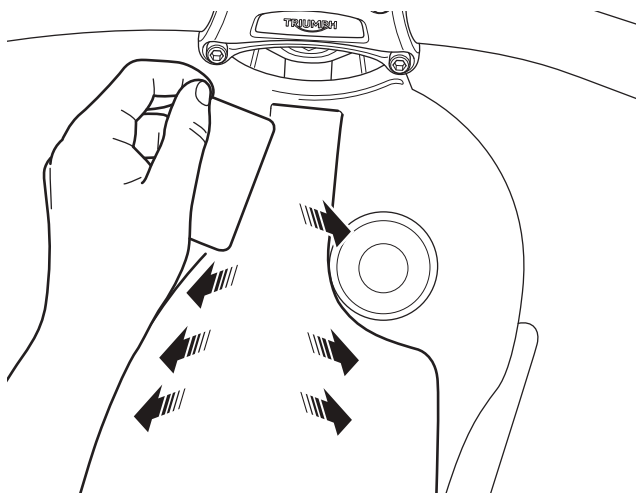
If any wrinkles appear in the film, work them out towards the closest edge using the squeegee or your thumb to gently spread the film. Avoid going across the wrinkle, this may create a crease in the film.

- Carefully apply suitable pressure to wrap the protective film over the tank making sure air bubbles and fluid are not trapped between the protective film and fuel tank.

- First apply pressure at the front of the protective strip and work down the centre of the fuel tank to remove any fluid and air bubbles.



- Next push any fluid and air bubbles from the centre of the fuel tank to the edges of the protective strip using short strokes, as shown below.

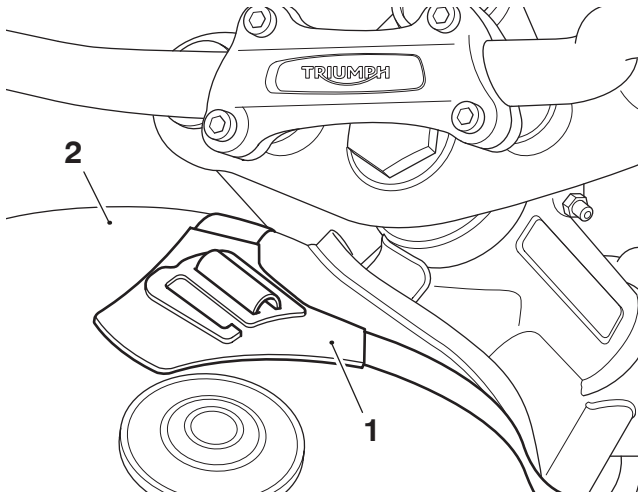


- Continue working the protective film until all areas are secured, then dry off any excess fluid with a paper towel.
- Should an edge of the protective strip not adhere to the fuel tank, hold it down for 20 to 30 seconds using your thumb. The heat transfer will help to activate the protective film adhesive in that area.

Front Mounting Harness Installation

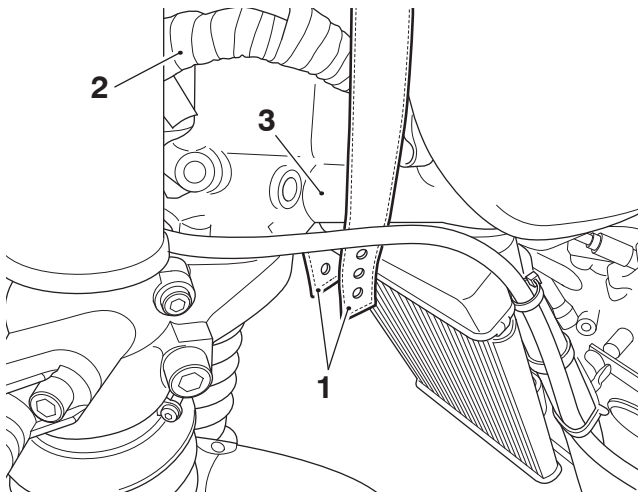
Street Twin from VIN 915136, Speed Twin 900, Street Scrambler from VIN 914448 and Scrambler 900 Models Only

10. Position the front mounting harness on the fuel tank in the orientation shown.



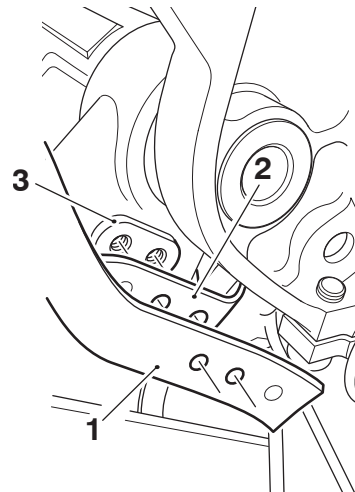
1. Front mounting harness
2. Fuel tank

11. Feed the front mounting harness straps around the front of the motorcycle frame, over the main harness bundle. Make sure any additional cables or wiring harnesses are not trapped between the straps and the frame.



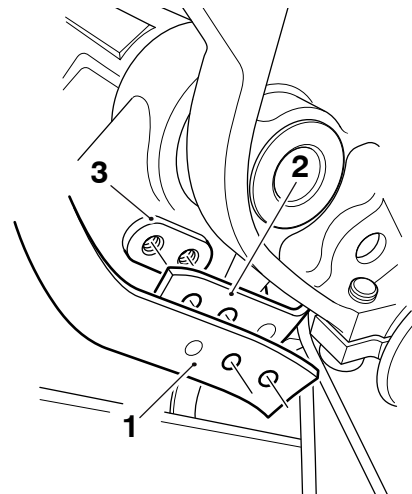
1. Front mounting harness straps
2. Main harness bundle
3. Motorcycle frame

12. Looking from the front underside of the motorcycle, position the left hand harness strap closest to the motorcycle frame, under the right hand harness strap and align the fixing holes, as shown below.



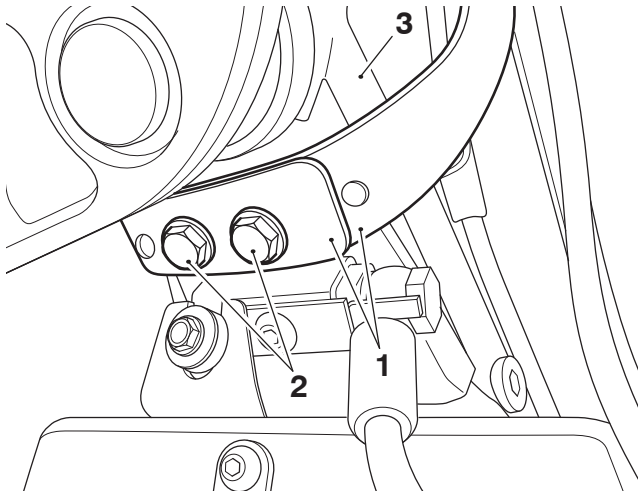
1. Harness strap, right hand
2. Harness strap, left hand
3. Frame fixing holes

13. If required, the position of the tank bag can be adjusted rearwards by aligning the harness strap fixing holes as shown below.



1. Harness strap, right hand
2. Harness strap, left hand
3. Frame fixing holes

14. Secure the front harness mounting straps to the motorcycle frame with the M6 x 20 mm screws from the kit. Tighten the fixings to **8 Nm**.

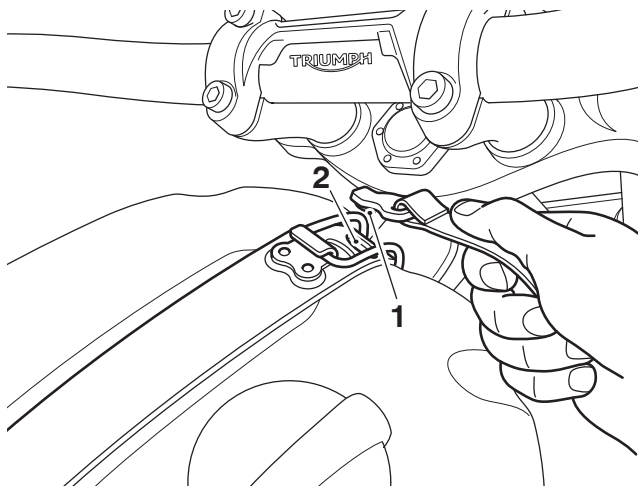


- 1. Harness straps
- 2. Screws, M6 x 20 mm
- 3. Motorcycle frame

15. Make sure the harness remains attached to the motorcycle at all times.

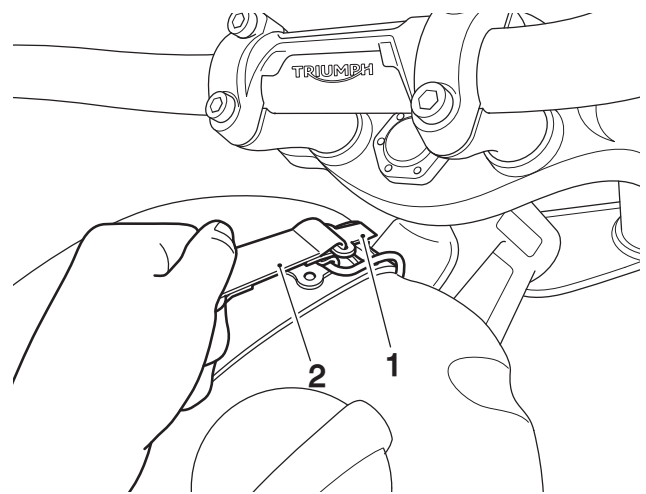
Scrambler 1200 XC and Scrambler 1200 XE to VIN XXXX Models Only

16. Fit the base of the front tank bag strap retaining clip through the fuel tank strap eyelet in the orientation shown.



- 1. Front tank bag strap retaining clip
- 2. Fuel tank strap eyelet

17. Rotate the front tank bag strap retaining clip anti-clockwise through 90 degrees until the tank bag strap is facing the rear of the motorcycle.

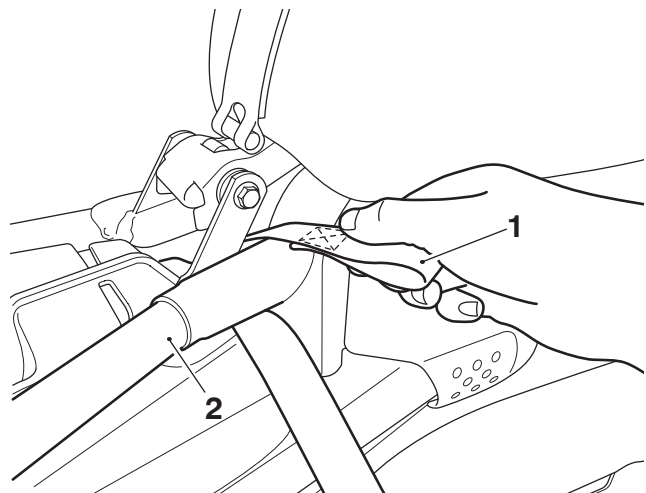


- 1. Front tank bag strap retaining clip
- 2. Fuel tank strap eyelet

Rear Strap Installation

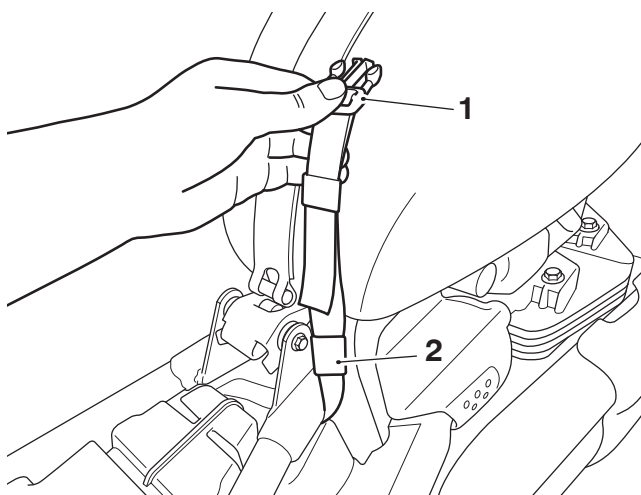
18. Remove the seat, as described in the Owner's Handbook.

19. Take one of the rear mounting straps from the kit and feed the loop end of the strap under the frame on the right hand side of the motorcycle, as shown. Make sure the strap is tight to the frame and does not trap any pipework or wiring harnesses.



- 1. Front tank bag strap retaining clip
- 2. Fuel tank strap eyelet

20. Pass the other end of the harness, with clip, through the loop and pull tight to secure the harness to the motorcycle frame.



1. Front tank bag strap retaining clip
2. Fuel tank strap eyelet

21. Repeat steps 19 and 20 for the second rear mounting strap, on the left hand side of the motorcycle.
22. Refit the seat, as described in the Owner's Handbook.

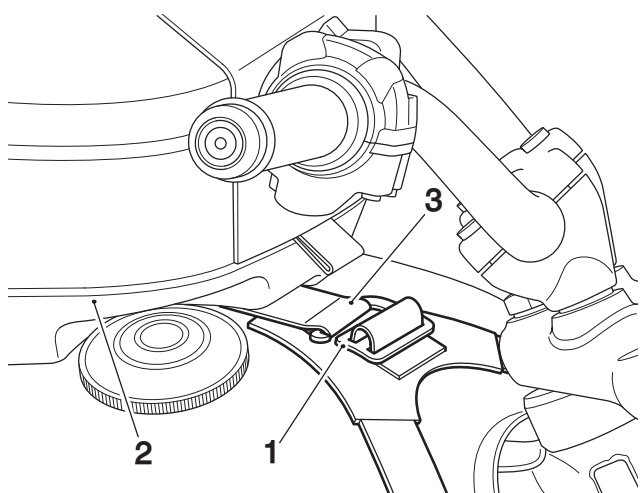
Installing the Tank Bag

NOTICE

Make sure the fuel tank and the underside of the tank bag are clean and dry prior to fitting.

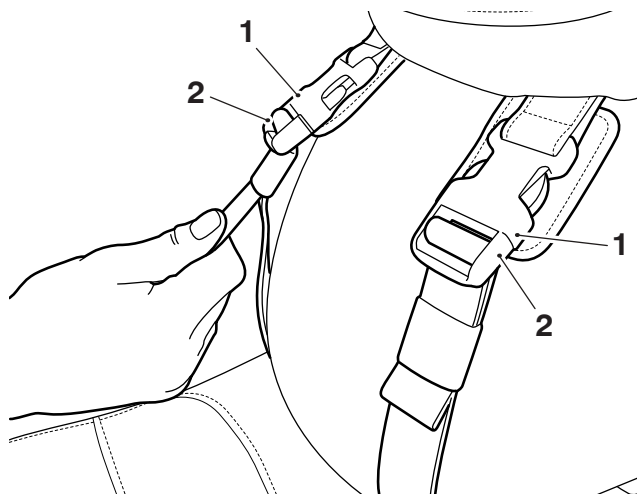
Street Twin from VIN 915136, Speed Twin 900, Street Scrambler from VIN 914448 and Scrambler 900 Models Only

1. Position the tank bag on the fuel tank and attach the wide webbing loop at the front of the tank bag to the front mounting harness G-clip.



1. Front mounting harness G-clip
2. Tank bag
3. Tank bag wide webbing loop

2. Attach the clips on the rear of the tank bag to the clips on the rear straps.

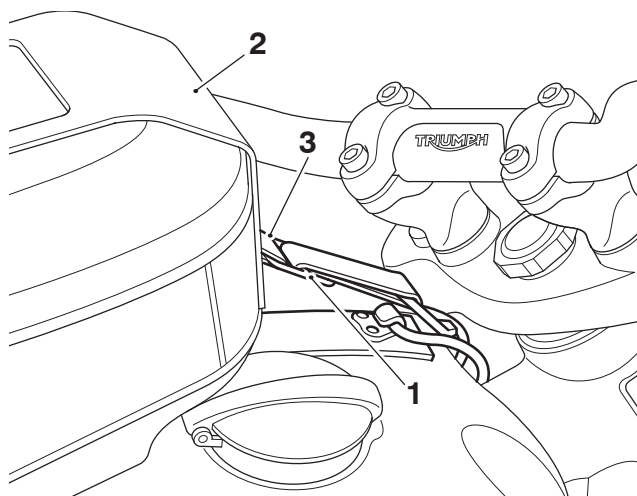


1. Tank bag clips
2. Rear strap clips

3. Adjust the rear straps to make sure the tank bag is held securely on the fuel tank.

Scrambler 1200 XC and Scrambler 1200 XE to VIN BN8495 Models Only

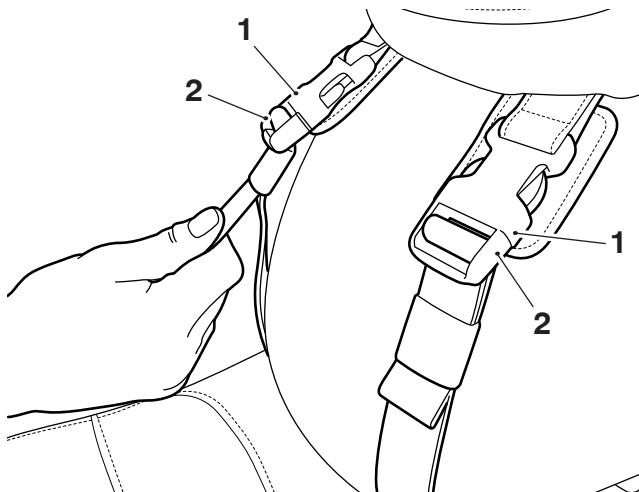
4. Position the tank bag on the fuel tank and attach the narrow webbing loop at the front of the tank bag to the tank bag front strap.



1. Tank bag front strap
2. Tank bag
3. Tank bag narrow webbing loop

5. Make sure the tank bag front strap remains attached to the tank bag at all times.

- Attach the clips on the rear of the tank bag to the clips on the rear straps.



- Tank bag clips
- Rear strap clips

- Adjust the rear straps to make sure the tank bag is held securely on the fuel tank.

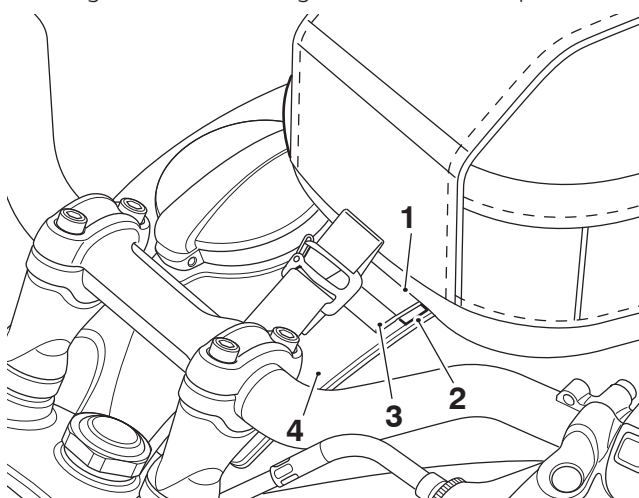
NOTICE

For motorcycles with a matt finish fuel tank continue from step 8.

NOTICE

For motorcycles with a gloss finish fuel tank continue from step 21.

- Lift the webbing loop at the front of the tank bag and using a strip of masking tape under the webbing loop mark the front position of the tank bag on the tank strap making sure the rear edge of the tape is aligned with the front edge of the tank bag, as shown. Repeat with a second strip of masking tape to mark the rear edge of the tank bag on the tank strap.



- Tank bag, front edge
- Masking tape
- Webbing loop
- Tank strap

- Remove the tank bag from the fuel tank.

CAUTION

Before using any degreasing or cleaning agents, always test a small area of paintwork first, especially if applying to fresh paintwork. Some degreasing or cleaning agents may damage the paintwork.

- Clean the fuel tank thoroughly by using a suitable panel cleaner to remove any polish or grease from the painted surface.

- Spray clean water onto the fuel tank.

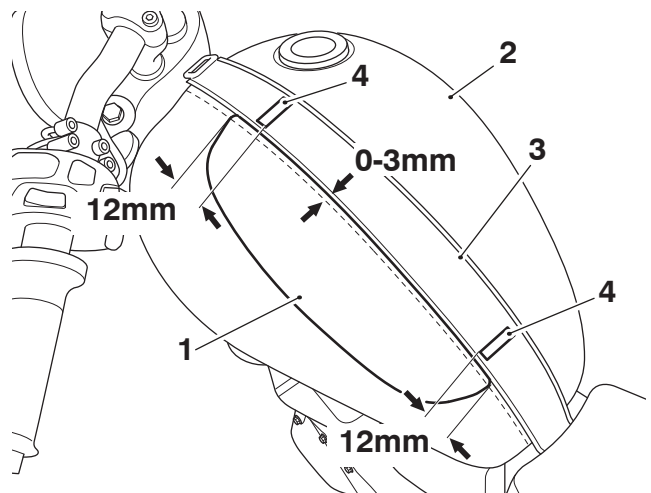
NOTICE

With clean hands, spray water onto your fore finger and thumb before peeling any film off the backing paper. This will prevent fingerprints appearing on the adhesive surface of the film.

Left hand side of the fuel tank

- Peel the left hand protective film from the backing paper while continually spraying clean water on to the adhesive side of the film.

- Lay the left hand protective film onto the fuel tank, starting at the front. The front edge of the protective film should be positioned 12 mm ahead of the front masking tape mark. The bottom edge of the film should lay 12 mm below the rear tape mark. Make sure the inside edge of the protective film is positioned 0-3 mm over the start of the radius into the recessed tank strap surface.



- Protective film
- Fuel tank
- Tank strap
- Masking tape

NOTICE

For best results, push firmly over the protective film using a semi-rigid film squeegee that will not mark the surface. Make sure the squeegee is wet to allow it to glide on the protective film surface.

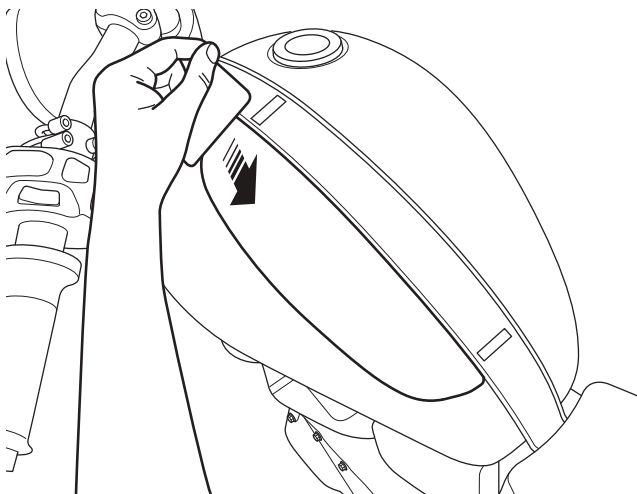
NOTICE

When dealing with curved surfaces, tension will need to be applied for the film to take to the contours of the surface. Pull gently in the direction required and the film will naturally take to the curvature of the fuel tank.

NOTICE

if any wrinkles appear in the film, work them out towards the closest edge using the squeegee or your thumb to gently spread the film. Avoid going across the wrinkle, this may create a crease in the film.

14. Carefully apply suitable pressure to wrap the protective film over the tank making sure air bubbles and fluid are not trapped between the protective film and fuel tank.
15. First apply pressure at the front of the protective strip and work downwards to remove any fluid and air bubbles.



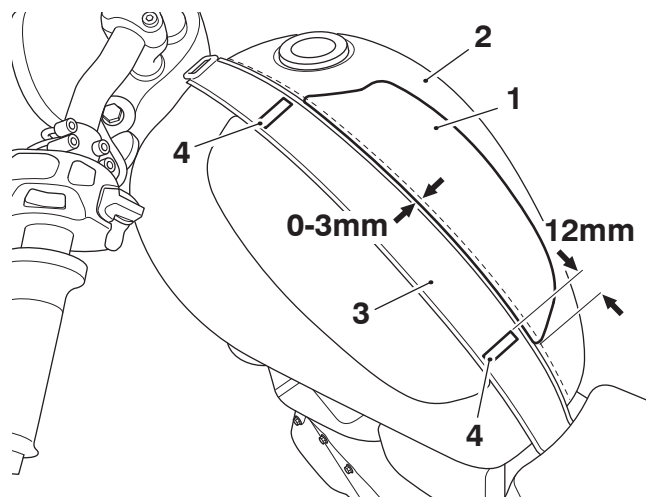
16. Continue working the protective film until all areas are secured, then dry off any excess fluid with a paper towel.
17. Should an edge of the protective strip not adhere to the fuel tank, hold it down for 20 to 30 seconds using your thumb. The heat transfer will help to activate the protective film adhesive in that area.

Right hand side of the fuel tank

NOTICE

With clean hands, spray water onto your fore finger and thumb before peeling any film off the backing paper. This will prevent fingerprints appearing on the adhesive surface of the film.

18. Peel the right hand protective film from the backing paper while continually spraying clean water on to the adhesive side of the film.
19. Lay the right hand protective film onto the fuel tank, starting at the bottom. The lower edge of the film should be positioned 12 mm below the rear masking tape mark. Make sure the inside edge of the protective film is positioned 0-3 mm over the start of the radius into the recessed tank strap surface.



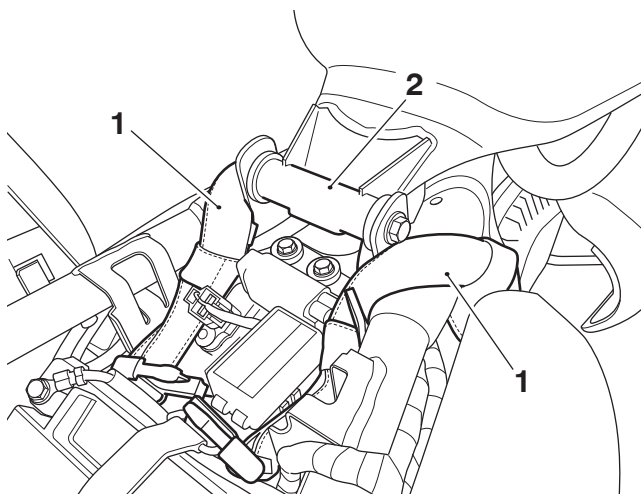
1. Protective film
2. Fuel tank
3. Tank strap
4. Masking tape

20. Remove the masking tape from the tank strap.
21. Refit the tank bag following steps 4 to 7.

All Models

22. Check there is no significant side to side, or upwards movement of the tank bag. It should not be possible to lift the tank bag away from the fuel tank when the tank bag rear straps are adjusted correctly. If necessary re-adjust the tank bag rear straps.

23. If riding without the tank bag, remove the seat, as described on the Owner's Handbook, and store the rear straps in the area below the seat. Make sure the rear straps do not interfere with the seat's front mounting. Refit the seat.



1. Fuel tank
2. Protective film

⚠ WARNING

The maximum safe load for the tank bag is 3 kg (6.6 lbs). Never exceed this loading limit as this may cause the motorcycle to become unstable leading to loss of control and an accident.

⚠ CAUTION

Use of chemicals or high-pressure spray washers is not recommended for cleaning the tank bag. Using chemicals or pressure washers may damage the tank bag.

We recommend the use of a proprietary automotive scratch removal product to remove light marks or scratches from the fuel tank paint.

Care of the Tank Bag

NOTICE

Placing light coloured clothing or other items next to a waxed cotton tank bag may allow the wax to bleed, causing stains or marks.

NOTICE

Waxed cotton tank bags are constructed from natural materials therefore scratches and scuffs will develop naturally, enhancing the appearance of the tank bag.

To maintain the appearance of your product, we recommend that you periodically clean the tank bag. Your Triumph waxed cotton tank bag is a natural product and a lack of care can result in damage and permanent wear.

NOTICE

Dirt and grit contamination between the fuel tank and the tank bag can cause damage to the paint on the fuel tank.

Regular cleaning of the fuel tank and the tank bag is essential to reduce the possibility of damage to the fuel tank paint.

Use of chemicals or high-pressure spray washers is not recommended for cleaning the motorcycle or tank bag.

Follow the instructions given in the Owner's Handbook to clean the motorcycle.

We recommend the use of a proprietary automotive scratch removal product to remove light marks or scratches from the fuel tank paint.

Cleaning the Tank Bag

Frequent, regular cleaning is an essential part of the maintenance of your tank bag. If regularly cleaned, the appearance will be preserved for many years. Cleaning with cold water and a sponge is essential at all times but particularly so after exposure to sea breezes, sea water, dusty or muddy roads and in winter when roads are treated for ice and snow. A brush can be used to remove dirt or grit in extreme circumstances.

Do not use hot water or household detergent, as the use of such products will lead to premature deterioration.

Follow the instructions below to maintain the appearance of the tank bag:

- Do not use household cleaning products, bleach, detergents containing bleach or any kind of solvent to clean the tank bag. Use a sponge dampened with water only.
- Do not immerse the tank bag in water.
- Do not store items such as damp or wet clothing inside the tank bag as this can cause damage to the tank bag or the stored items.
- Avoid direct heat from fires and radiators, which can dry out and distort the tank bag.
- Avoid direct sunlight for extended periods, which can discolour the tank bag.
- Do not dry the tank bag by applying direct heat to it at any time.
- If the tank bag does get wet, absorb excess water with a soft clean cloth then leave the product to dry naturally at room temperature.

- Avoid exposing the tank bag to high levels of salt, for example sea/salt water or road surfaces that have been treated during the winter for ice and snow.
- If exposure to salt is unavoidable, clean your product immediately after each exposure using a damp sponge, then leave the product to dry naturally at room temperature.
- Allow mud to dry before wiping off. Use a soft cloth to remove the mud, then leave to dry naturally at room temperature.
- Place the product into a fabric bag or cardboard box to protect it when in storage. Do not put the tank bag into a plastic bag.

Re-Treatment Instructions

NOTICE

These instructions apply only to the waxed cotton fabric of the tank bag. Do not apply wax to any other material of the tank bag.

Using a proprietary cotton re-proofing wax, follow the simple instructions below to maintain the appearance, colour and water resistance of the tank bag.

1. Lightly brush off any dirt or soil, and if necessary use a cold damp cloth to wipe down the tank bag.
2. Heat the tin of re-proofing wax so that it becomes flexible and easy to apply. You can place the tin of wax in a pan of hot water and warm it gently.
3. Evenly apply the wax to the waxed cotton fabric of the tank bag with a lint free cloth, paying particular attention to the seams.
4. Allow the wax to dry slightly and remove any excess wax build up.
5. Use a hair dryer to melt the wax into the wax cotton of the tank bag to make sure an even spread of the wax across the tank bag.

⚠ WARNING

After fitting the accessory kit the motorcycle will exhibit new handling characteristics.

Operate the motorcycle in a safe area free from traffic to gain familiarity with any new characteristics.

Operation of the motorcycle when not familiar with any new handling characteristics may lead to loss of motorcycle control which could result in serious injury or death.

⚠ WARNING

If, after fitting this accessory kit, you have any doubt about the performance of any aspect of the motorcycle, contact a competent person with the specialist knowledge and technical understanding of motorcycles, such as an authorised Triumph dealer.

Riding a motorcycle when there is any doubt as to any aspect of the performance of the motorcycle may lead to loss of motorcycle control which could result in serious injury or death.

⚠ WARNING

Never ride an accessory-equipped motorcycle at speeds above 80 mph (130 km/h).

Remember that the 80 mph (130 km/h) limit will be reduced by the fitting of non-approved accessories, incorrect loading, worn tyres, overall motorcycle condition and poor road or weather conditions.

The presence of accessories will cause changes in the stability and handling of the motorcycle. Failure to allow for changes in motorcycle stability may lead to loss of motorcycle control which could result in serious injury or death.

⚠ WARNING

High-speed operation should only be attempted by riders who have been instructed in the techniques necessary for high-speed riding and are familiar with the motorcycle's characteristics in all conditions.

Only operate this Triumph motorcycle at high speed in closed-course, on-road competition or on closed-course racetracks.

High-speed operation in any other circumstances is dangerous and may lead to loss of motorcycle control which could result in serious injury or death.

NOTICE

The motorcycle must not be operated above the legal road speed limit except in closed-course conditions.