



Accessory Fitting Instructions

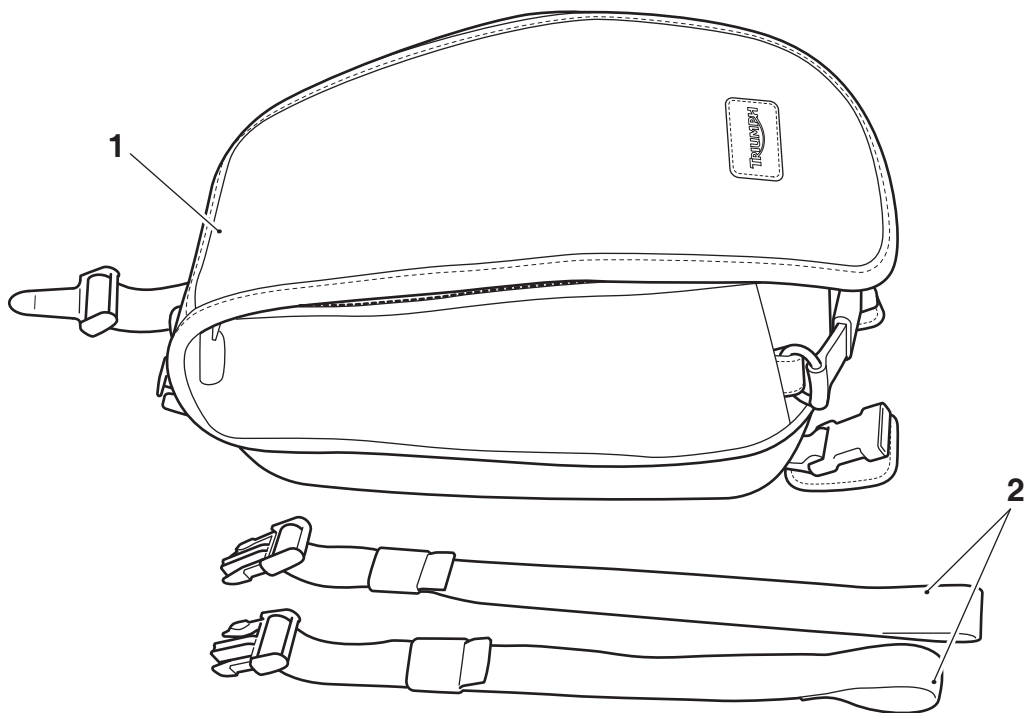
Tank Bag, Waxed Cotton, Olive	
Kit Number	Models Affected
A9518094	Thrupton 1200, Thrupton 1200 R, Thrupton RS, Thrupton TFC
Tank Bag, Waxed Cotton, Black	
Kit Number	Models Affected
A9518095	Thrupton 1200, Thrupton 1200 R, Thrupton RS, Thrupton TFC
Tank Bag, Nylon	
Kit Number	Models Affected
A9510142	Thrupton 1200, Thrupton 1200 R, Thrupton RS, Thrupton TFC
The tank bags listed above must be used with the front latch kit below.	
Front Latch Kit - Tank Bag	
Kit Number	Models Affected
A9798016	Thrupton 1200

Thank you for choosing this Triumph genuine accessory kit. This accessory kit is the product of Triumph's use of proven engineering, exhaustive testing, and continuous striving for superior reliability, safety and performance.

Completely read all of these instructions before commencing the installation of the accessory kit in order to become thoroughly familiar with the kit's features and the installation process.

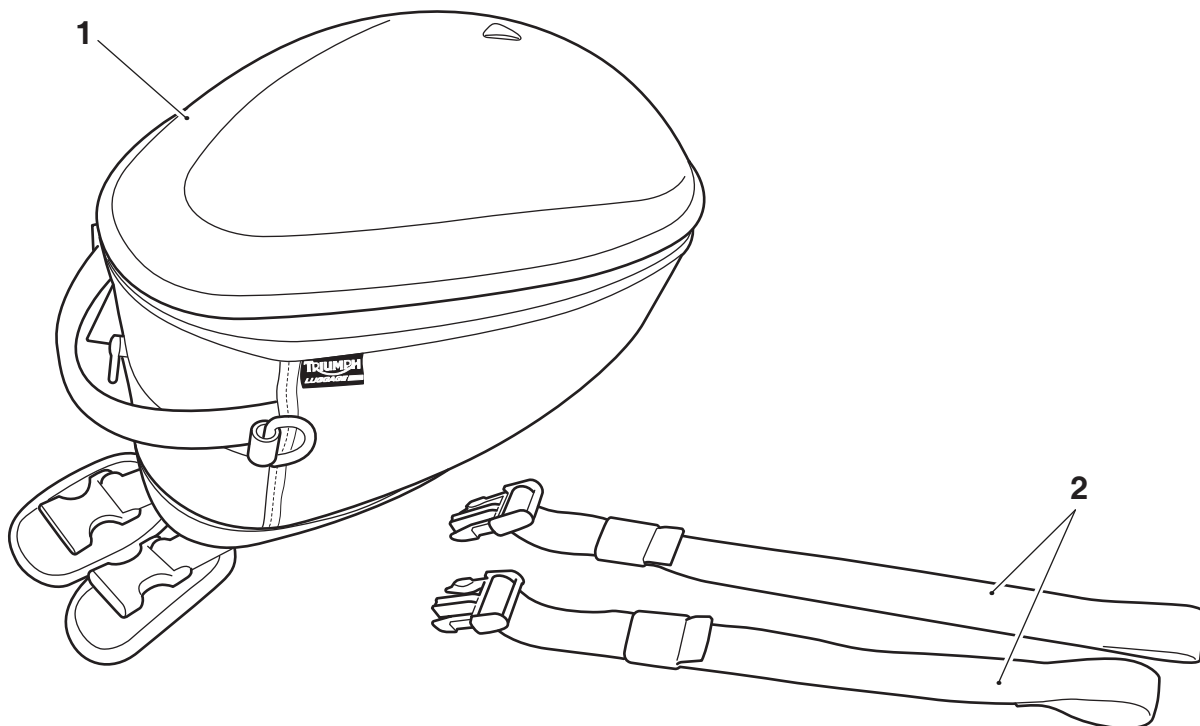
These instructions should be considered a permanent part of your accessory kit, and should remain with it even if your accessory equipped motorcycle is subsequently sold.

Parts Supplied: A9518094, A9518095



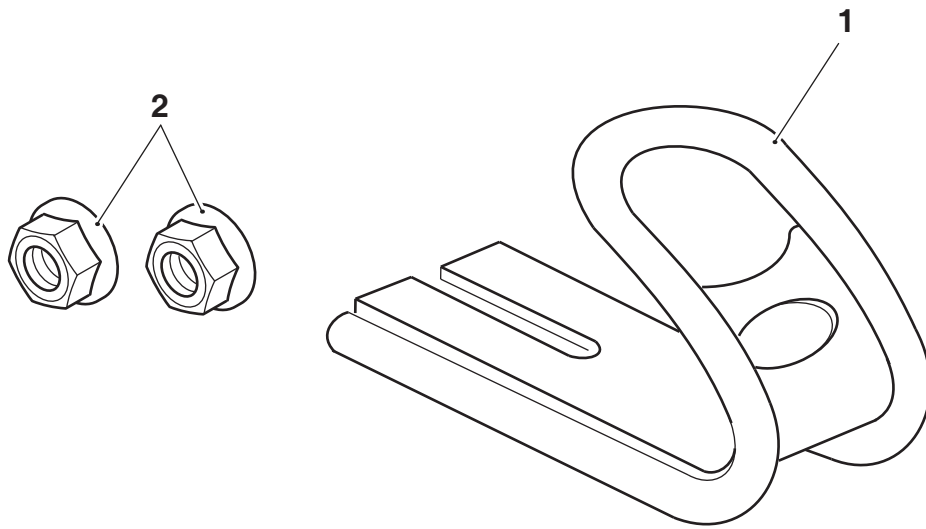
1. Tank Bag, Waxed cotton	1 off	2. Mounting strap	2 off
---------------------------	-------	-------------------	-------

Parts Supplied: A9518142



1. Tank Bag, Nylon	1 off	2. Mounting strap	2 off
--------------------	-------	-------------------	-------

Parts Supplied: A9798016



1. Front mounting latch	1 off	2. Lock nut	2 off
-------------------------	-------	-------------	-------

 **Warning**

Fit only genuine Triumph accessories to those models approved by Triumph as listed in the associated Triumph fitting instructions. The accessory kits covered in this instruction are designed for use on specific models of Triumph motorcycle. The accessory kits and the models applicable are listed at the start of the instruction. They should never be fitted to any other Triumph model or to any other manufacturer's motorcycle. Fitting an accessory kit to a Triumph model not listed, or to any other manufacturer's motorcycle will affect the performance, stability and handling of the motorcycle. This may affect the rider's ability to control the motorcycle and could result in an accident causing severe injuries or death.

Chrome Line Edition models only

 **Caution**

The use of tank bags, tank-mounted accessories, or abrasive rider clothing may cause damage to the chrome finish and must not be used. Guidance on cleaning and storage is given in the Owner's Handbook.

All Models

 **Warning**

Always have Triumph approved parts, accessories and conversions fitted by a trained technician of an authorised Triumph dealer. The fitment of parts, accessories and conversions by a technician who is not of an authorised Triumph dealer may affect the handling, stability or other aspects of the motorcycle's operation which may result in loss of motorcycle control and an accident.

 **Warning**

Throughout this operation, make sure that the motorcycle is stabilised and adequately supported to prevent risk of injury from the motorcycle falling.

 **Warning**

A torque wrench of known accurate calibration must be used when fitting this accessory kit. Failure to tighten any of the fasteners to the correct torque specification may affect motorcycle performance, handling and stability. This may result in loss of motorcycle control and an accident.

 **Warning**

Install the tank bag only in the position described below. Installation of the tank bag in any other position on the motorcycle will affect the handling, stability or other aspects of the motorcycle's operation, which may result in loss of motorcycle control and an accident.

 **Warning**

Remove the shoulder strap(s) from the tank bag before mounting to the motorcycle. Operation of the motorcycle with the shoulder strap(s) fitted may result in loss of motorcycle control and an accident.

Note:

- **Triumph offers a broad range of approved genuine accessories for your motorcycle. We cannot therefore cover all possible equipment variations in these instructions. For removal and installation of Triumph Genuine Accessories, always refer to the instructions supplied with the respective accessory kit. To obtain additional copies of any Triumph accessory instructions, visit www.triumphinstructions.com or contact your authorised Triumph dealer.**

Note:

- **The installation is the same for all tank bag variants for the models listed. The instructions below show the Waxed Cotton version.**
- **For motorcycles with a tank strap fitted continue from step 7. For motorcycles without a tank strap fitted continue from step 1.**

Note:

- **This tank bag is not to be used on Chrome Edition models.**

Front Mounting Latch Installation

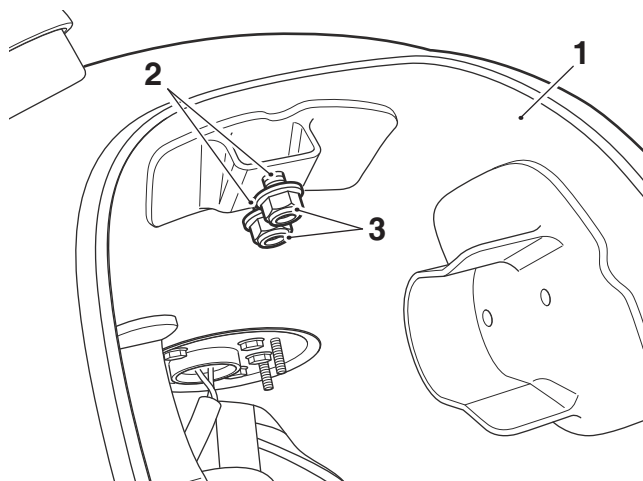
1. Remove the seat, as described in the Service Manual.

Note:

- **Lock nuts can be re-used providing resistance can be felt when the locking portion passes over the thread of the bolt or stud. Always use the correct replacement lock nut as recommended in the Triumph parts catalogue.**
2. Remove the rear fuel tank fixing and lock nut, retain for re-use.

Note:

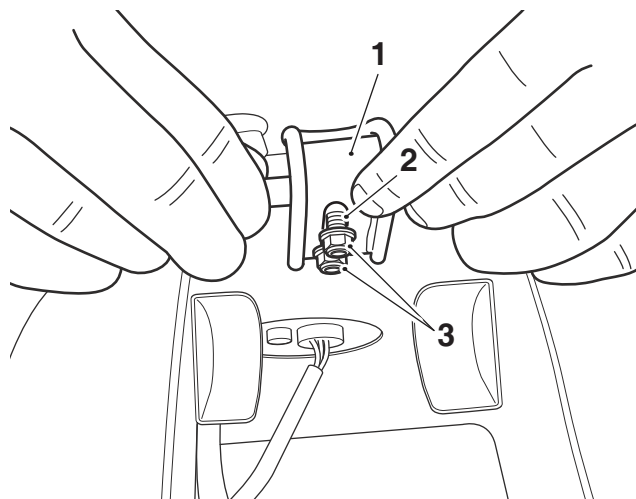
- **When sliding the fuel tank rearward to disengage from the front mountings make sure the fuel tank is supported and all hose and electrical connections remain connected.**
3. Slide the fuel tank rearward to disengage it from the mount bushes and allow the front to be raised.
 4. Locate the two mounting studs on the underside of the fuel tank and loosely fit the two lock nuts from the front latch kit, as shown.



1. Fuel tank
2. Mounting stud
3. Lock nut

Note:

- **When fitting the front latch on to the fuel tank make sure the latch does not contact the front edge, or top surface of the fuel tank.**
5. Locate the slot in the front mounting latch on to the mounting studs and push the latch on to the studs as far as possible. Tighten the lock nuts to **5 Nm**.

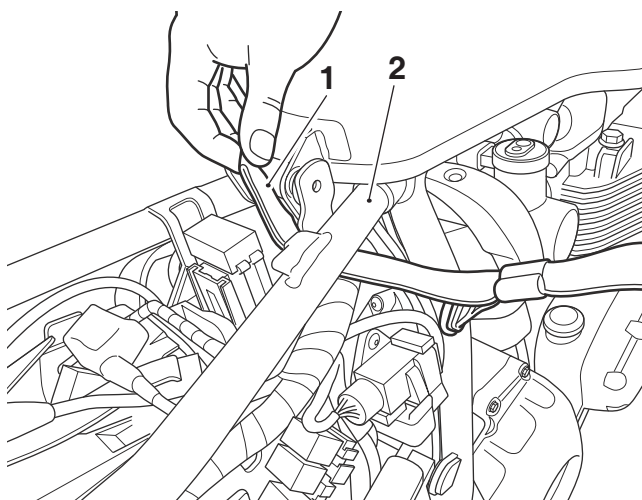


1. Front mounting latch
2. Mounting stud
3. Lock nut

6. Lower the front of the fuel tank and slide forwards on to the mount bushes. Do not re-assemble the rear fixing at this stage.

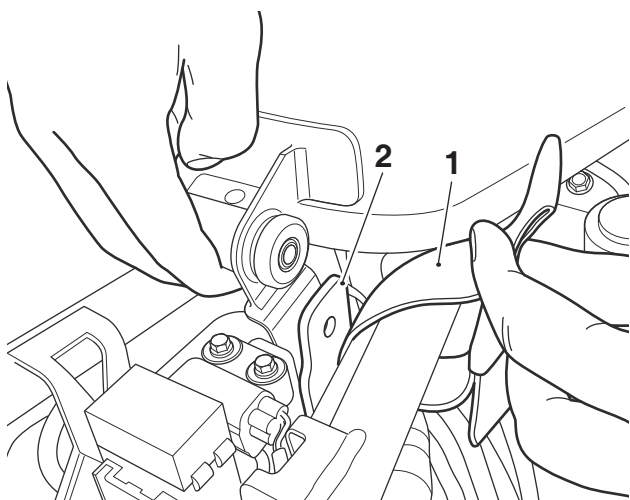
Rear Mounting Strap Installation

7. Remove the left and right hand side panels, as described in the Service Manual.
8. If not already done so when fitting the front latch, remove the fuel tank rear fixing. Retain the fixing for re-use.
9. Take one of the rear mounting straps from the kit and feed the loop end of the strap under the frame on the right hand side of the motorcycle, as shown. Make sure the strap is tight to the frame and does not trap any pipework or wiring harnesses.



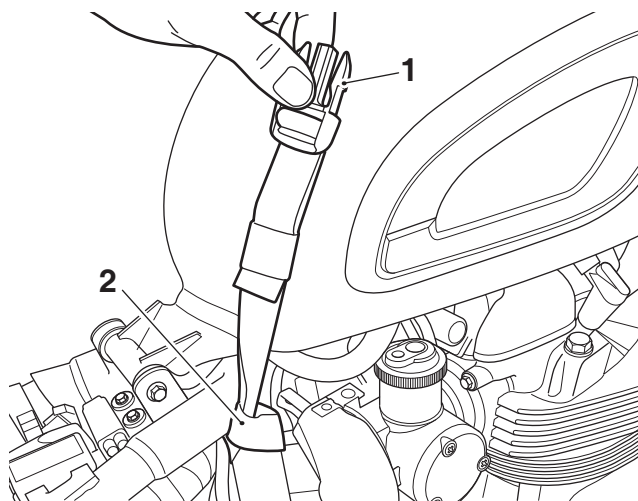
1. Loop, rear mounting strap
2. Motorcycle frame

10. Lift the rear of the fuel tank to clear the frame mounting bracket and slide the mounting strap past the frame mounting bracket, as shown.



1. Mounting strap
2. Fuel tank rear mounting

11. Pass the end of the harness, with the clip, through the loop at the other end of the harness and pull tight to secure the harness to the motorcycle frame.



1. Clip
2. Loop

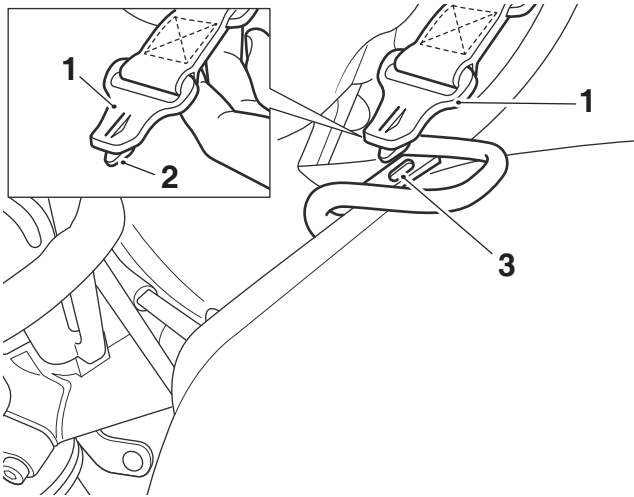
12. Repeat steps 9 to 11 for the second rear mounting strap, on the left hand side of the motorcycle.
13. Refit the fuel tank rear fixing and lock nut. Tighten the fixing to **8 Nm**.
14. Refit the left and right hand side panels, as described in the Service Manual.
15. Refit the seat, as described in the Service Manual.

Installing the Tank Bag

Note:

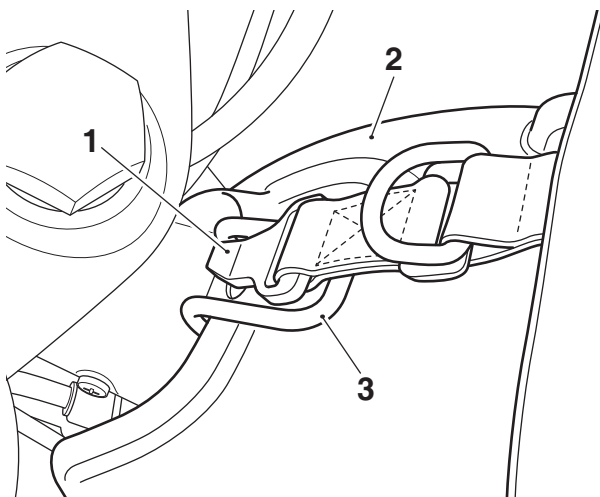
- **When using the tank bag, always pack heavier items at the bottom of the bag.**
- **Make sure the fuel tank and underside of the tank bag are clean and dry prior to fitting.**

16. Holding the tank bag and front mounting harness clip at ninety degrees to the front mounting latch, as shown, locate the tab on the bottom of the mounting clip into the slot in the front mounting latch.



1. Front mounting harness clip
2. Tab, harness clip
3. Slot, mounting latch

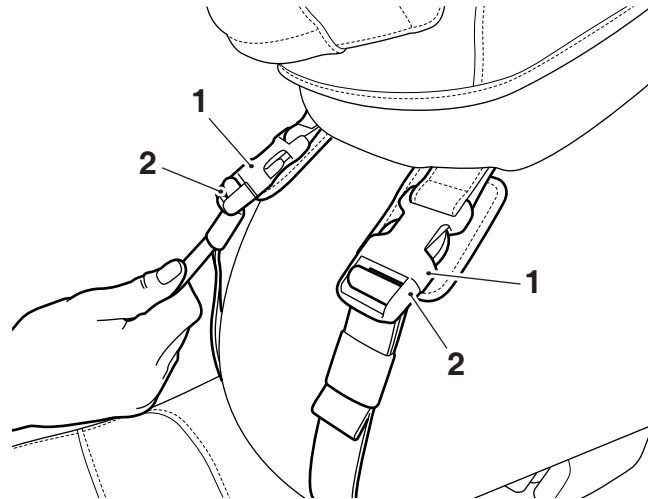
17. While holding the front mounting clip in position on the mounting latch, turn the mounting clip through ninety degrees towards the rear of the motorcycle so that the clip is engaged to the mounting latch, as shown.



1. Front mounting harness clip
2. Fuel tank
3. Mounting latch

18. Position the tank bag on to the fuel tank.

19. Attach the clips on the rear of the tank bag to the clips on the rear straps.

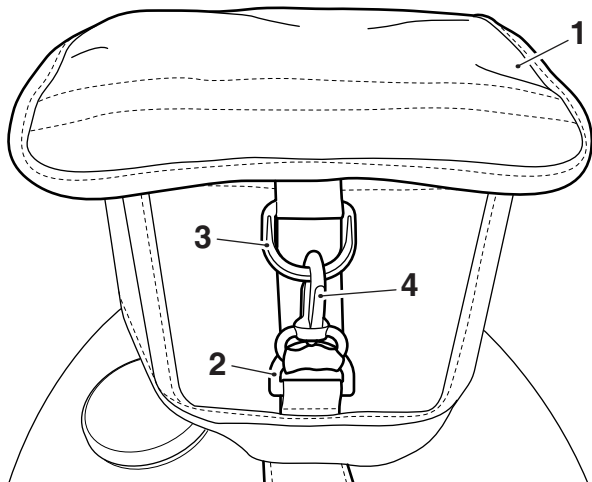


1. Tank bag clip
2. Rear strap clips

20. Adjust the rear straps to make sure the tank bag is held securely on the fuel tank.
21. Check there is no significant side to side, or upwards movement of the tank bag. It should not be possible to lift the tank bag away from the fuel tank when the tank bag rear straps are adjusted correctly. If necessary re-adjust the tank bag rear straps.
22. If riding without the tank bag, remove the seat, as described in the Service Manual, and store the rear straps in the area below the seat. Make sure the rear straps do not interfere with the seat's front mounting.

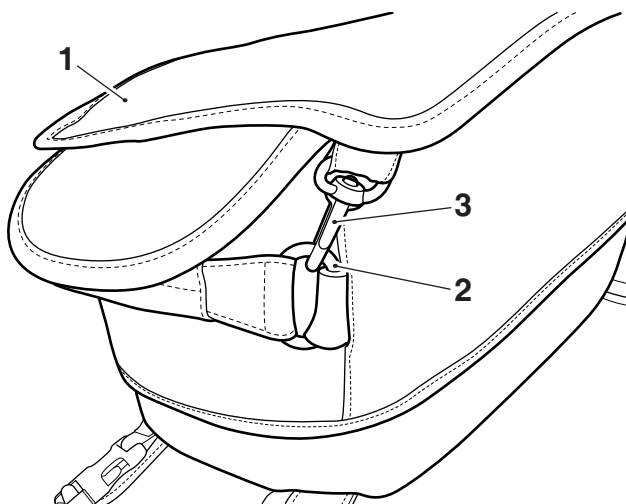
Installing the Map Pocket

23. Position the map pocket centrally on the tank bag with the single fixing strap at the front.
24. Loop the clip of the front strap on the map pocket through the D ring on the tank bag and attach to the D ring on the map pocket, as shown.



1. Map pocket
2. D ring, tank bag
3. D ring, map pocket
4. Clip

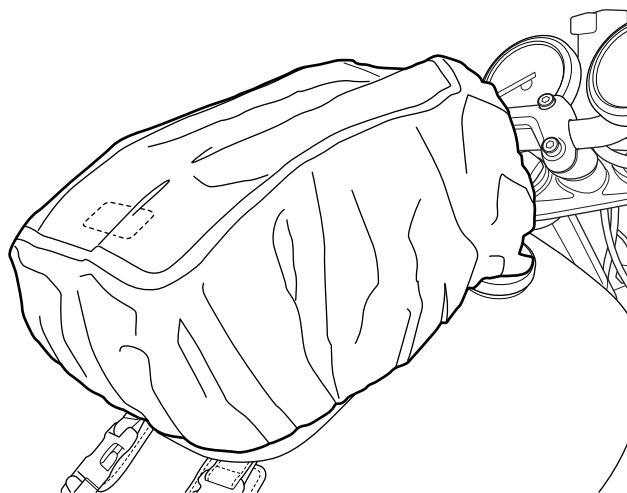
25. Attach the left and right hand rear map pocket fixing clips to the rings provided on the tank bag.



1. Map pocket
2. Ring, tank bag
3. Clip, right hand shown

Installing the Rain Cover

26. Position the rain cover over the tank bag, as shown below.



Care of Tank Bag



Caution

Use of chemicals or high-pressure spray washers is not recommended for cleaning the tank bag. Using chemicals or pressure washers may damage the tank bag.

Note:

- **Placing light coloured clothing or other items next to a waxed cotton tank bag may allow the wax to bleed, causing stains or marks.**
- **Waxed cotton tank bags are constructed from natural materials therefore scratches and scuffs will develop naturally, enhancing the appearance of the tank bag.**

To maintain the appearance of your product, we recommend that you periodically clean the tank bag. Your Triumph waxed cotton tank bag is a natural product and a lack of care can result in damage and permanent wear.

Cleaning Instructions

Frequent, regular cleaning is an essential part of the maintenance of your tank bag. If regularly cleaned, the appearance will be preserved for many years.

Follow these simple instructions below to maintain the look of the tank bag:

- Do not use household cleaning products, bleach, detergents containing bleach or any kind of solvent to clean the tank bag; use a damp sponge only.
- Do not immerse the tank bag in water.
- Do not store items such as damp or wet clothing inside the tank bag as this can cause damage to the waxed cotton or the stored items.
- Avoid direct heat from fires and radiators which can dry out and distort the waxed cotton.
- Avoid direct sunlight for extended periods which can dry out and discolour the waxed cotton.
- Do not dry the tank bag by applying direct heat to them at any time.
- If the tank bag does get wet, absorb any excess water with a soft clean cloth then leave the product to dry naturally at room temperature.
- Avoid exposing the tank bag to high levels of salt, for example sea/salt water or road surfaces that have been treated during the winter for ice and snow.
- If exposure to salt is unavoidable, clean your product immediately after each exposure using a damp sponge then leave the product to dry naturally at room temperature.
- Allow mud to dry before wiping off. Use a soft cloth to remove the mud then leave them to dry naturally at room temperature.
- Gently clean any minor marks with a damp sponge then leave them to dry naturally at room temperature.
- Place the product into a fabric bag or cardboard box to protect it when in storage. Do not put the tank bag into a plastic bag.



Warning

The maximum safe load for the tank bag is 3 kg (6.6 lbs). Never exceed this loading limit as this may cause the motorcycle to become unstable leading to loss of control and an accident.



Warning

Make sure the tank bag does not restrict the movement of the steering or cause any cables or wiring harnesses to bind.

Move the handlebars to left and right full lock while checking that cables and wiring harnesses do not bind. A cable or harness which binds will restrict the steering. Any restriction of the steering may cause loss of control and an accident.



Warning

After fitting the accessory kit the motorcycle will exhibit new handling characteristics. Operate the motorcycle in a safe area free from traffic to gain familiarity with any new characteristics. Operation of the motorcycle when not familiar with any new handling characteristics may result in loss of motorcycle control and an accident.



Warning

If, after fitting this accessory kit, you have any doubt about the performance of any aspect of the motorcycle, contact an authorised Triumph dealer and do not ride the motorcycle until the authorised dealer has declared it fit for use. Riding a motorcycle when there is any doubt as to any aspect of the performance of the motorcycle may result in loss of control of the motorcycle leading to an accident.



Warning

Never ride an accessory-equipped motorcycle at speeds above 80 mph (130 km/h).

The presence of accessories will cause changes in the stability and handling of the motorcycle. Failure to allow for changes in motorcycle stability may lead to loss of control or an accident.

Remember that the 80 mph (130 km/h) limit will be reduced by the fitting of non-approved accessories, incorrect loading, worn tyres, overall motorcycle condition and poor road or weather conditions.



Warning

The motorcycle must not be operated above the legal road speed limit except in closed-course conditions.



Warning

Only operate this Triumph motorcycle at high speed in closed-course, on-road competition or on closed-course racetracks. High-speed operation should only be attempted by riders who have been instructed in the techniques necessary for high-speed riding and are familiar with the motorcycle's characteristics in all conditions.

High-speed operation in any other circumstances is dangerous and will lead to loss of motorcycle control and an accident.