

English

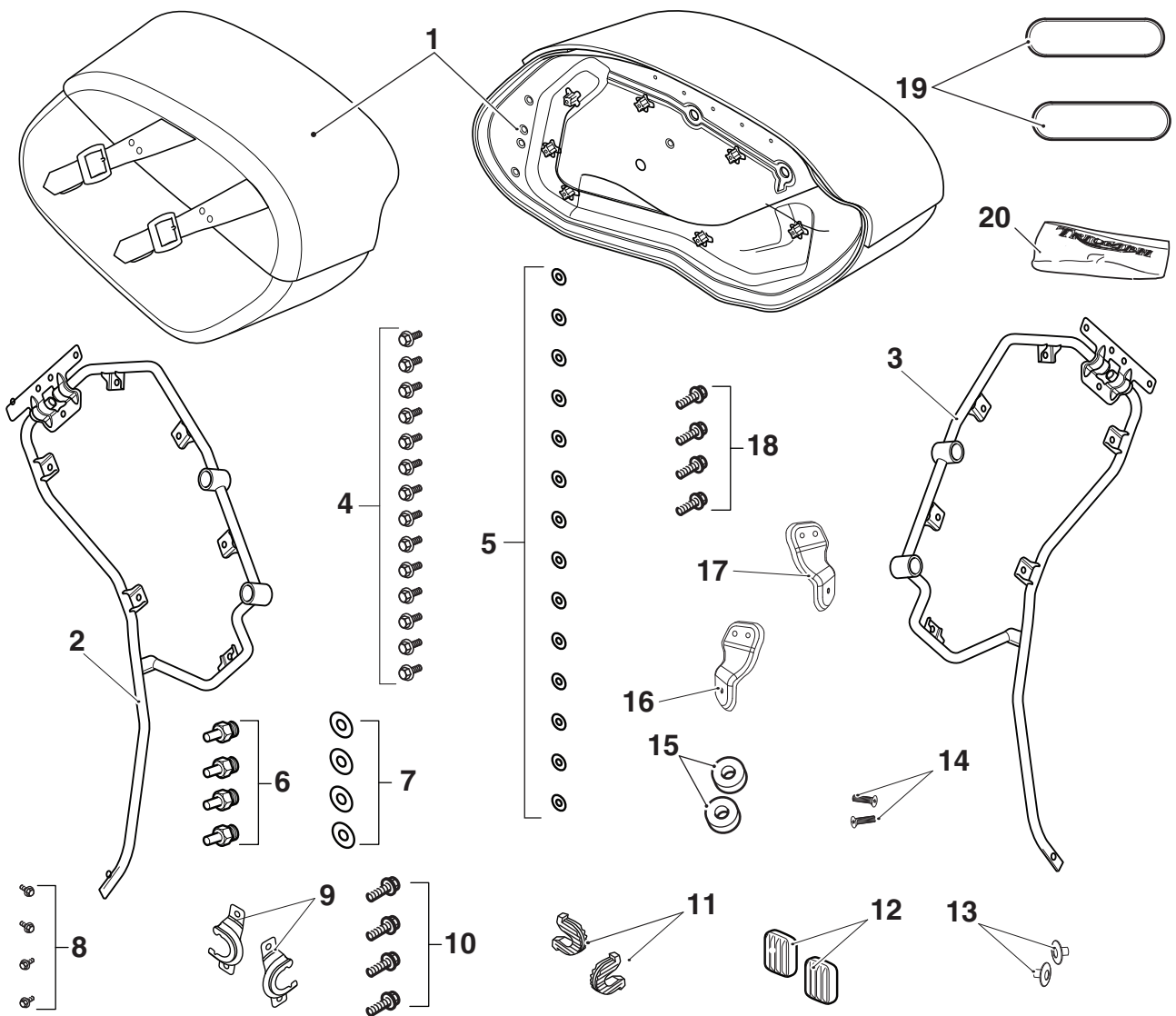
Fitting Instructions:
Thunderbird Commander
A9518036

Thank you for choosing this Triumph genuine accessory kit. This accessory kit is the product of Triumph's use of proven engineering, exhaustive testing, and continuous striving for superior reliability, safety and performance.

Completely read all of these instructions before commencing the installation of the accessory kit in order to become thoroughly familiar with the kit's features and the installation process.

These instructions should be considered a permanent part of your accessory kit, and should remain with it even if your accessory-equipped motorcycle is subsequently sold.

A9518036



Parts Supplied:

1.	Pannier, leather, pair	1 off	11.	Pannier rubber, rear	2 off
2.	Pannier mounting, left hand	1 off	12.	Pannier rubber, front	2 off
3.	Pannier mounting, right hand	1 off	13.	Flanged sleeve, M6	2 off
4.	Bolt, M5 x 12 mm	14 off	14.	Screw, M6 x 25 mm	2 off
5.	Flanged sleeve, 5.1 x 7.1 x 1.6 mm	14 off	15.	Spacer, 9 x 30 x 6 mm	4 off
6.	Stud, pannier mount	4 off	16.	Bracket, pannier, left hand	1 off
7.	Washer 8.5 x 25 x 2 mm	4 off	17.	Bracket, pannier, right hand	1 off
8.	Screw, M8 x 20 mm	4 off	18.	Bolt, M6 x 10 mm	4 off
9.	Pannier bracket	2 off	19.	Reflector, red	2 off
10.	Bolt, M6 x 12 mm	4 off	20.	Cleaning swab	1 off



Warning

This accessory kit is designed for use on Triumph Thunderbird Commander motorcycles only and should not be fitted to any other manufacturer's motorcycle. Fitting this accessory kit to any other manufacturer's motorcycle will affect the performance, stability and handling of the motorcycle. This may affect the rider's ability to control the motorcycle and could cause an accident.



Warning

Always have Triumph approved parts, accessories and conversions fitted by a trained technician of an authorised Triumph dealer. The fitment of parts, accessories and conversions by a technician who is not of an authorised Triumph dealer may affect the handling, stability or other aspects of the motorcycle's operation which may result in loss of motorcycle control and an accident.



Warning

Throughout this operation, ensure that the motorcycle is stabilised and adequately supported to prevent risk of injury from the motorcycle falling.



Warning

A torque wrench of known accurate calibration must be used when fitting this accessory kit. Failure to tighten any of the fasteners to the correct torque specification may result in loss of motorcycle control and an accident.

1. Recover the supplied parts from the parts kit.
2. Remove the rider's seat; refer to the Service Manual.

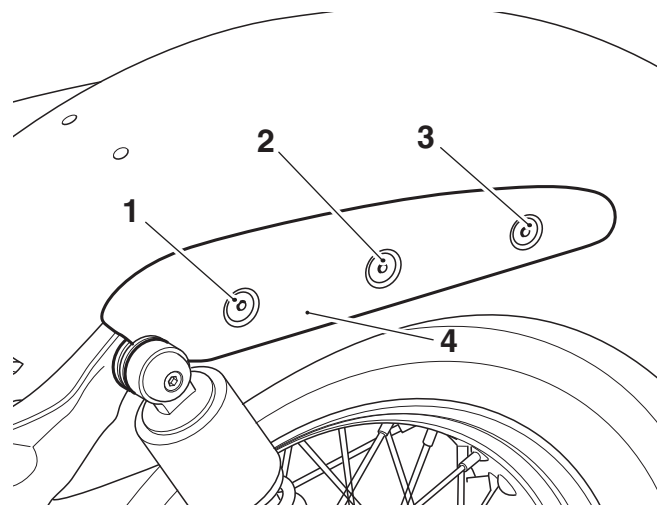
Motorcycles without a Backrest Bar fitted

Note:

- **Additional kit T2306446 (supplied separately) is required for motorcycles without the backrest bar already fitted.**

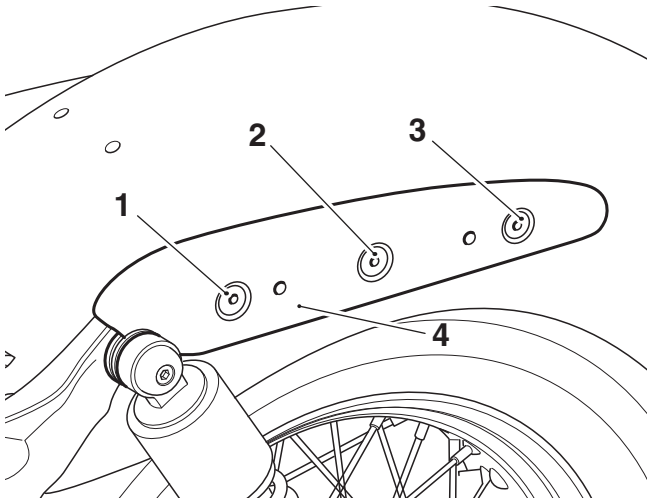
Left Hand Side

1. Working on the left hand side, remove the three bolts and washers securing the frame cover taking note of their position. Retain the bolts and washers for re-use during installation and the frame cover if the motorcycle is to be returned to its original condition.



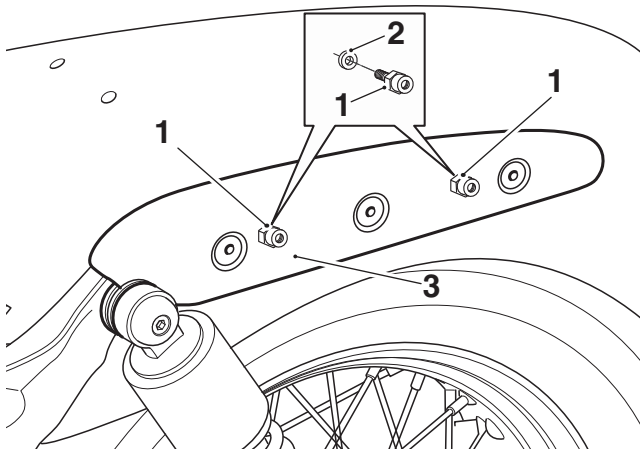
1. Bolt, M10 x 45 mm
2. Bolt, M8 x 30 mm
3. Bolt, M8 x 35 mm
4. Frame cover

2. Collect the left hand frame cover from the additional kit T2306446 and align it to the mudguard, as shown below. Using the bolts and washers removed earlier secure the mudguard cover to the frame, tighten the front M10 bolt to **45 Nm** and the two M8 bolts to **24 Nm**.



1. Bolt, M10 x 45 mm
2. Bolt, M8 x 30 mm
3. Bolt, M8 x 35 mm
4. Frame cover

3. Collect two pannier mounting studs and two 6 mm spacers. Place the spacers over the threaded part of the studs, insert the stud into the threaded holes of the frame cover and tighten to **20 Nm**.

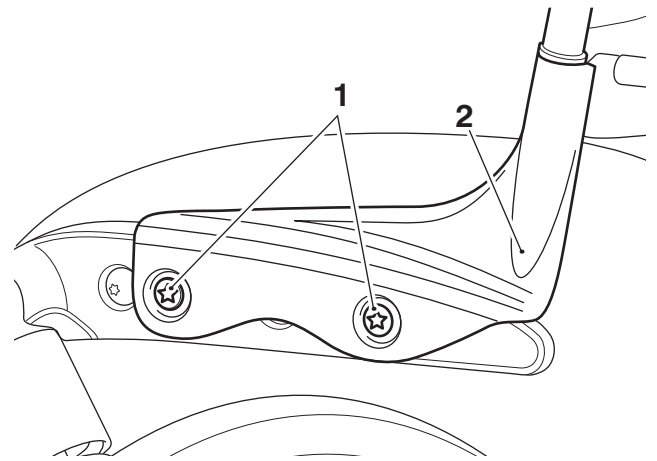


1. Pannier mounting studs
2. Spacer, 6 mm
3. Frame cover

4. Repeat steps 1 to 3 for the right hand side.

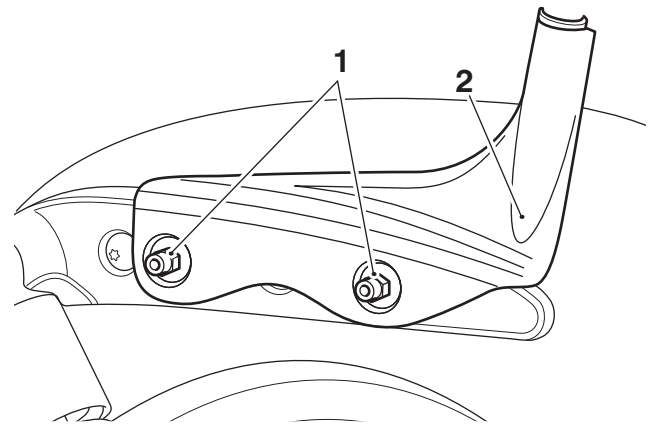
Motorcycles with a Backrest Bar fitted

1. Working on the left hand side, remove the two screws securing the backrest bar to the frame cover. Retain the screws for re-use if the motorcycle is to be returned to its condition without the panniers fitted.



1. Screws, M8 x 16 mm
2. Backrest bar

2. Collect two pannier mounting studs. Place the threaded part of the stud through the backrest bar, insert the stud into the threaded holes of the frame cover and tighten to **20 Nm**.

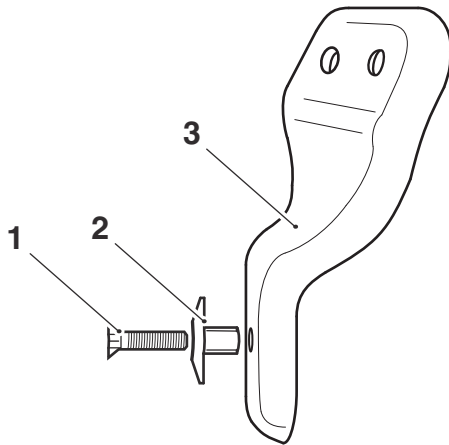


1. Pannier mounting studs
2. Backrest bar

3. Repeat for the right hand side.

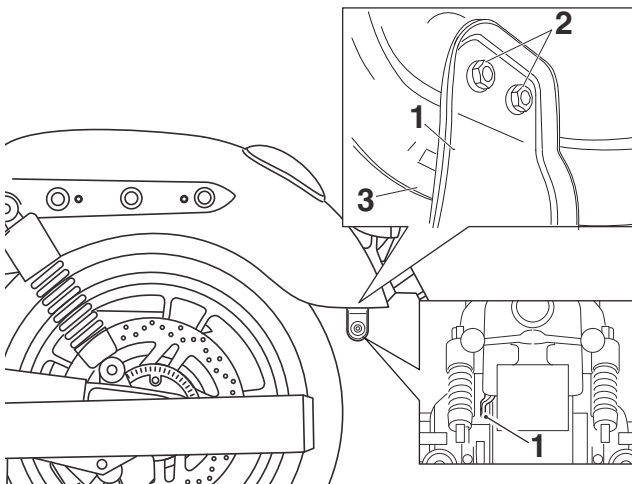
All Models

1. Collect the left hand lower pannier mounting bracket, an M6 flanged sleeve and an M6 x 25 mm screw, fit the screw and flanged sleeve to the left hand lower pannier mounting bracket. Tighten the screw to **5 Nm**.



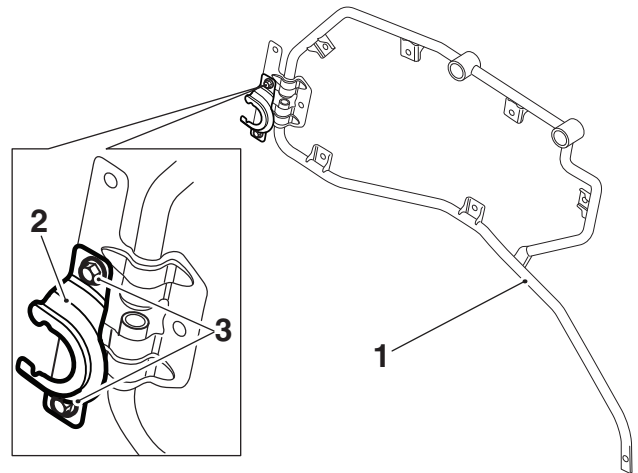
1. Screw, M6 x 25 mm
2. Flanged sleeve
3. Lower pannier mounting bracket

2. Collect two M6 x 10 mm bolts. Position the lower pannier mounting bracket to the inside of the mudguard, check the flanged sleeve is parallel to the rear mudguard as shown below. Tighten the bolts to **5 Nm**.



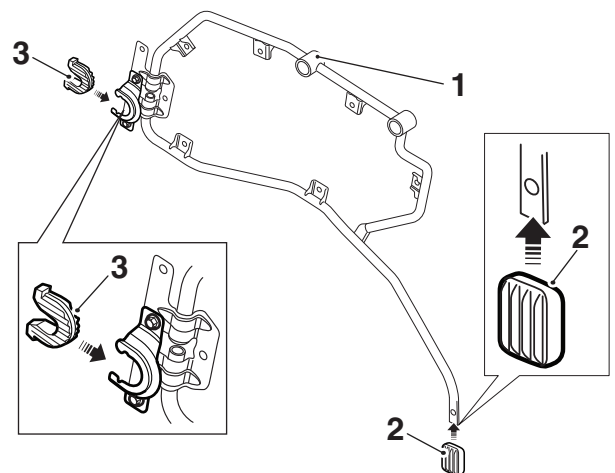
1. Lower pannier mounting bracket
2. Bolts, M6 x 10 mm
3. Mudguard

3. Collect the left hand pannier frame, a rear support bracket and two M6 x 12 mm bolts. Position the rear support bracket as shown below. Tighten the bolts to **8 Nm**.



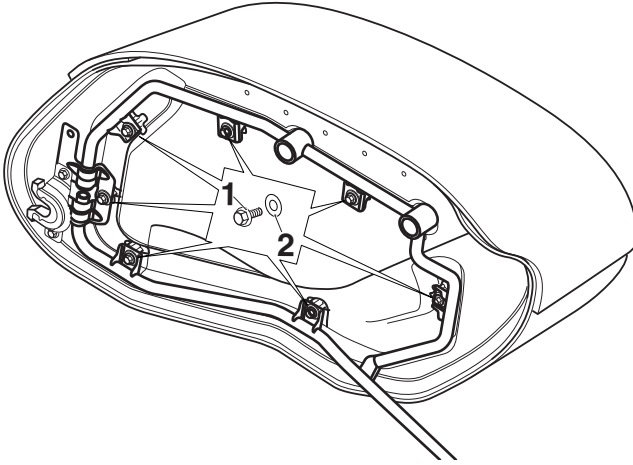
1. Pannier frame
2. Rear support bracket
3. Bolts, M6 x 12 mm

4. Collect the front and rear pannier mounting bracket rubbers and position to the pannier frame as shown below:



1. Pannier frame
2. Front mounting rubber
3. Rear mounting rubber

5. Collect the pannier, seven flanged sleeves and seven M5 x 12 mm bolts. Position the pannier frame to the pannier, fit the bolts and flanged sleeves. Tighten the bolts to **5 Nm**.

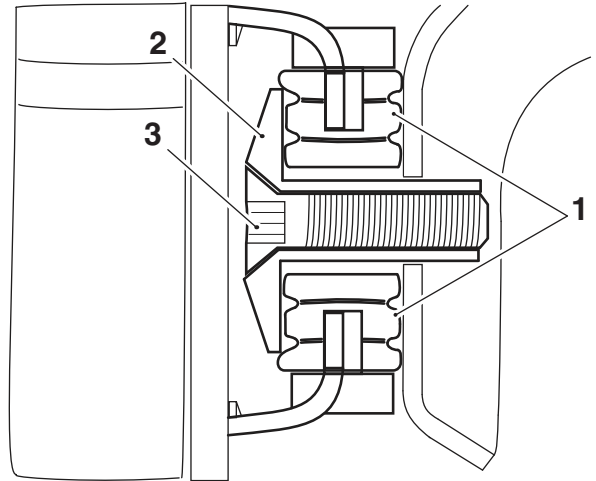


1. Bolts, M5 x 12 mm
2. Flanged sleeves

6. Repeat steps 1 to 5 for the right hand side.

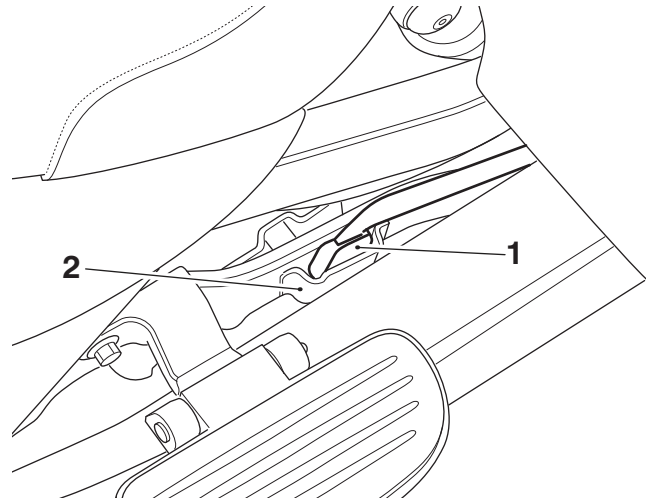
Fitting the Panniers to the Motorcycle

1. Align the rear mounting of the pannier to the flanged sleeve on the mudguard bracket. Slide the pannier rearwards to fully engage on to it.



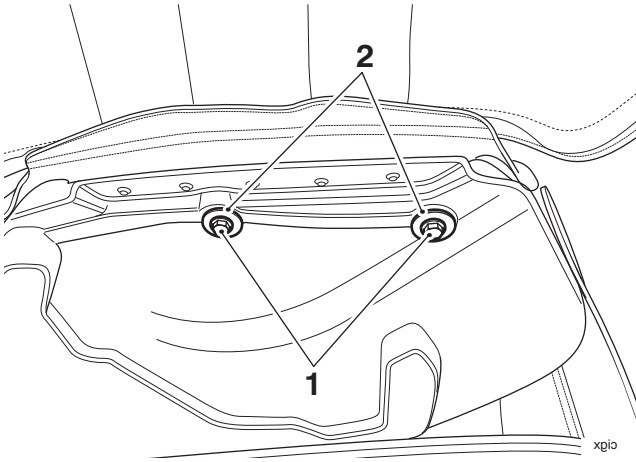
1. Rear rubber mounting
2. Flanged sleeve
3. Screw, M6 x 25 mm

2. Fit the front mounting into the slot located on the frame of the motorcycle.



1. Front rubber mounting
2. Frame

3. Collect two M8 x 20 mm bolts and M8 washers, open the pannier lid and position the top inner edge of the pannier mounting frame to the mounting studs. Tighten the bolts to **15 Nm**.



1. Fixings
2. Washers



Warning

Always ensure that the front and rear mountings of the pannier are correctly engaged and the fasteners are secure. A loose or detached pannier could cause loss of motorcycle control and an accident.



Warning

The maximum safe load for each pannier is 5 kg (11 lbs). Never exceed this loading limit as this may cause the motorcycle to become unstable leading to loss of control and an accident.



Warning

In all cases, loads must be evenly distributed on both sides of the motorcycle. Uneven loading may cause instability, loss of motorcycle control and an accident.

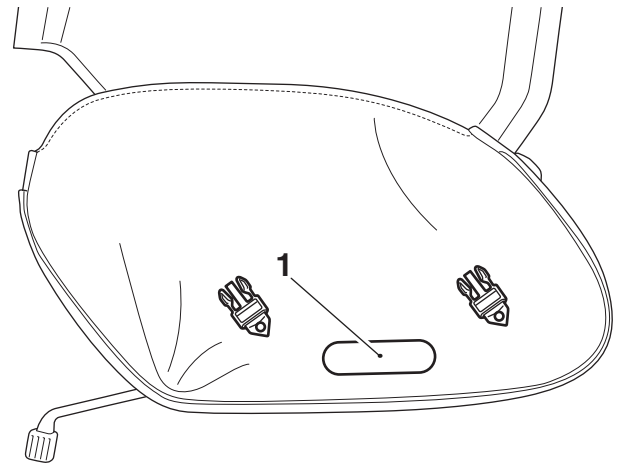
Fitting the Reflectors to the Panniers

Notice

Failure to fit a reflector to each pannier as shown contravenes federal law and renders the motorcycle illegal for road use in the United States, Canada, Argentina, Taiwan and Singapore. Always fit the reflectors as shown.

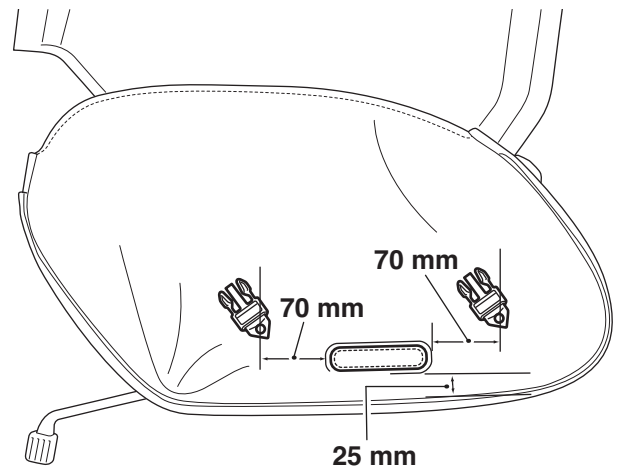
Note:

- Read the warning notices printed on the cleaning wipe packet in the fitting kit.
 - The surfaces to which the reflectors are affixed must be clean and dry to ensure that the adhesive has a sound base to adhere to. Use the cleaning wipe supplied for this purpose.
1. Working on the left hand pannier, clean the mounting surface area of the pannier with the cleaning wipe provided.



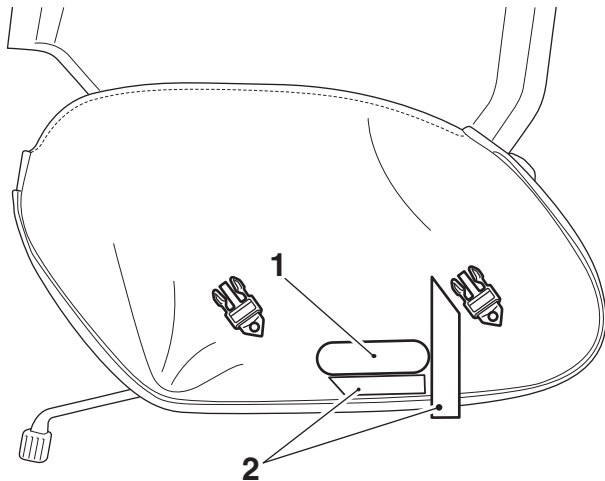
1. Cleaned area

2. Align the reflector to the pannier as shown below:




Location for Reflector

3. Mark the position of the reflector edges using suitable adhesive masking tape (not supplied in the kit).



1. Reflector
2. Masking tape

4. Remove the protective film from the adhesive pad on the rear of the reflector.

 Caution
When fitting self-adhesive parts care must be taken to ensure positioning is correct and accurate. Once the adhesive has been attached to the mounting surface, there is no satisfactory method of removal and re-positioning if incorrectly aligned. Initial bonding is instant, full bonding is achieved after 72 hours.

5. Carefully locate the reflector on to the pannier to the previously marked position. Apply firm and even pressure to the entire reflector to ensure a good bond is achieved.
6. Remove the masking tape from the pannier.
7. Repeat for the right hand pannier.

Care of Leather Panniers

Triumph recommend that you periodically clean your leather panniers with a damp cloth and allow them to dry naturally at room temperature. This will maintain the appearance of the leather and ensure the long life of your product.

Your Triumph leather product is a natural product and lack of care can result in damage and permanent wear. Follow these simple instructions and give your leather product the respect it deserves:

- Do not use household cleaning products, bleach, detergents containing bleach or any kind of solvent to clean your leather product.
- Do not immerse your leather product in water.
- Avoid direct heat from fires and radiators which can dry out and distort the leather.
- Do not leave your leather product in direct sunlight for prolonged periods of time.
- Do not dry your leather product by applying direct heat to it at any time.
- If your leather product does get wet, absorb any excess water with a soft clean cloth then leave the product to dry naturally at room temperature.
- Avoid exposure of your leather product to high levels of salt, for example sea/salt water or road surfaces that have been treated during the winter for ice and snow.
- If exposure to salt is unavoidable, clean your leather product immediately after each exposure using a damp cloth then leave the product to dry naturally at room temperature.
- Gently clean any minor marks with a damp cloth then leave the product to dry naturally at room temperature.
- Place your leather product in a fabric bag or cardboard box to protect it when in storage. Do not use a plastic bag.



Warning

After fitting the luggage system, operate the motorcycle in a safe area free from traffic to gain familiarity with the new handling characteristics. Operation when not familiar with the new characteristics of the motorcycle may result in an accident causing injury or death.



Warning

If, after fitment of this accessory kit, you have any doubt about the performance of any aspect of the motorcycle, contact an authorised Triumph dealer and do not ride the motorcycle until the authorised dealer has declared it fit for use. Riding a motorcycle when there is any doubt as to any aspect of the performance of the motorcycle may result in loss of control of the motorcycle leading to an accident.



Warning

Never ride an accessory-equipped motorcycle at speeds above 80 mph (130 km/h).

The presence of accessories will cause changes in the stability and handling of the motorcycle. Failure to allow for changes in motorcycle stability may lead to loss of control or an accident.

Remember that the 80 mph (130 km/h) limit will be reduced by the fitting of non-approved accessories, incorrect loading, worn tyres, overall motorcycle condition and poor road or weather conditions.



Warning

The motorcycle must not be operated above the legal road speed limit except in closed course conditions.



Warning

Only operate this Triumph motorcycle at high speed in closed course, on-road competition or on closed course racetracks. High speed operation should only be attempted by riders who have been instructed in the techniques necessary for high speed riding and are familiar with the motorcycle's characteristics in all conditions.

High speed operation in any other circumstances is dangerous and will lead to loss of motorcycle control and an accident.