

Fitting Instructions: Soft Luggage

Warning

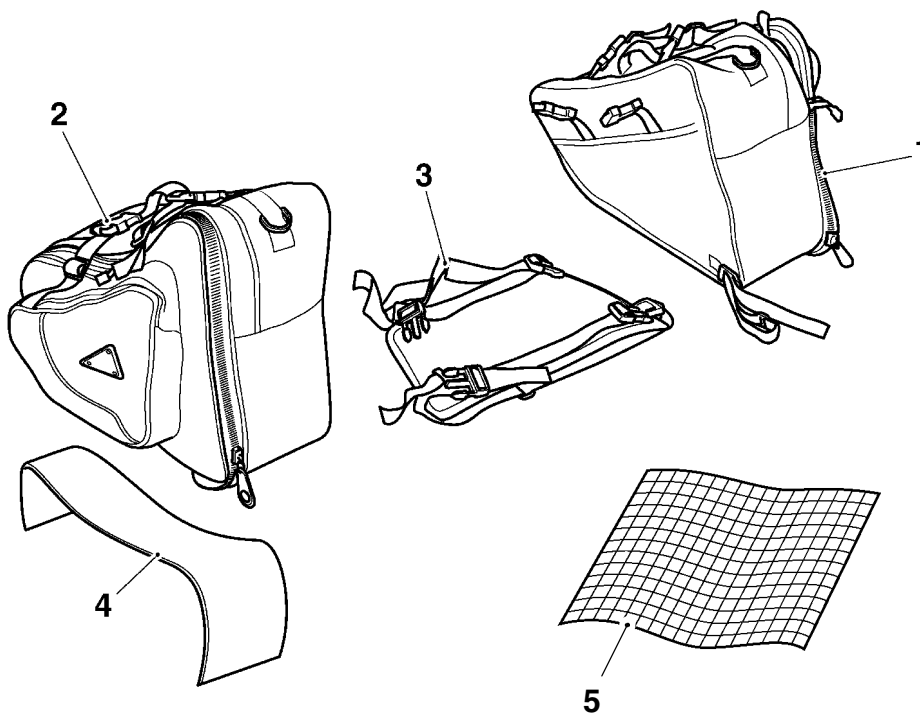
Throughout this operation, ensure that the motorcycle is stabilised and adequately supported on a paddock stand to prevent risk of injury from the motorcycle falling.

Warning

This accessory kit is designed for use on Triumph motorcycles only and should not be fitted to any other manufacturer's motorcycle. Fitting this accessory kit to any other manufacturer's motorcycle will affect the performance, stability and handling of the motorcycle. This may affect the riders ability to control the motorcycle and could cause an accident.

Warning

Always have Triumph approved parts, accessories and conversions fitted by a trained technician of an authorised Triumph dealer. The fitment of parts, accessories and conversions by a technician who is not of an authorised Triumph dealer may affect the handling, stability or other aspects of the motorcycles operation which may result in loss of motorcycle control and an accident.



Parts Supplied:

- | | | | |
|---------------------------------|-------|--------------------------------------|-------|
| 1. Left-hand soft pannier..... | 1 off | 4. Right-hand pannier stiffener..... | 1 off |
| 2. Right-hand soft pannier..... | 1 off | 5. Rubber blanket | 1 off |
| 3. Centre panel..... | 1 off | | |

NOTE

- Refer to current Triumph accessories brochure for details of model applicability.

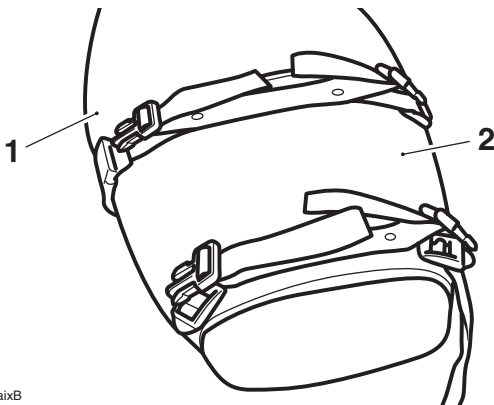
1. Unpack the right hand soft pannier, centre panel and stiffener from the left hand soft pannier.
2. Open the right hand soft pannier and undo the zip fastener to the compartment directly beneath the carrying handle.
3. Fit the stiffening panel as shown and close the zip fastener.



caiw

Fitting the stiffener to the right hand pannier

4. Fit the centre panel over the seat from the rear and tighten the securing straps underneath the seat.



caixB

1. Seat
2. Centre panel

5. Ensure that the painted surface of the rear bodywork is clean. Cut the rubber blanket supplied with the kit to shape and secure to the motorcycle.

Caution

Do not rely solely on the rubber blanket to protect the paintwork.

6. Clip on the left hand and right hand pannier using the four quick release fasteners on the centre panel.

7. To retain the luggage, use the retaining straps and secure around the rear footrest hanger.

Warning

Ensure that the securing straps are positioned as instructed. Failure to secure the straps as instructed may impede movement of the rear wheel or suspension causing the motorcycle to become unstable leading to loss of control and an accident.

8. Adjust the straps as required.
9. Remove the paddock stand and place the motorcycle on its side stand.

 **Warning**

The maximum safe load for each pannier is 3 Kg (6.6 lbs). Never exceed this loading limit as this may cause the motorcycle to become unstable leading to loss of control and an accident.

 **Warning**

In all cases, loads must be evenly distributed on both sides of the motorcycle. Uneven loading may cause instability, loss of control and an accident.

 **Warning**

After fitting this accessory kit, operate the motorcycle in a safe area free from traffic to gain familiarity with the new handling characteristics. Operation when not familiar with the new characteristics of the motorcycle may result in loss of motorcycle control and an accident.

 **Warning**

Never ride an accessory equipped motorcycle at speeds above the legal speed limit or at a speed inappropriate for the circumstances.
Speeds in excess of 130 km/h (80 m.p.h.) should not be attempted on an accessory equipped motorcycle even where the legal speed limit permits this.
The presence of accessories will cause changes in the stability and handling of the motorcycle.
Failure to allow for changes in motorcycle stability may lead to loss of control or an accident.
Remember that the 130 km/h (80 m.p.h.) absolute limit will be reduced by the fitting of non-approved accessories, incorrect loading, worn tyres, overall motorcycle condition and poor road or weather conditions.

 **Warning**

This motorcycle must not be operated above the legal road speed limit except in authorised closed course conditions.

 **Warning**

Only operate this Triumph motorcycle at high speed in closed-course on-road competition or on closed course racetracks. High speed operation should only be attempted by riders who have been instructed in the techniques necessary for high speed riding and are familiar with the motorcycle's characteristics in all conditions.
High speed operation in any other circumstances is dangerous and will lead to loss of motorcycle control and an accident.