



Accessory Fitting Instructions

Swinging Arm Bag Kit, Waxed Cotton, Olive	
Kit Number	Models Affected
A9510182	Bonneville Bobber, Bonneville Bobber TFC, Bonneville Speedmaster from VIN 739143
Swinging Arm Bag Kit, Waxed Cotton, Black	
Kit Number	Models Affected
A9510375 A9510663	Bonneville Bobber, Bonneville Bobber TFC, Bonneville Speedmaster from VIN 739143



Warning

Fitting this accessory to Bonneville Speedmaster from VIN 739143 will affect the passenger's ability to reach the footrests.

If this accessory is fitted to Bonneville Speedmaster from VIN 739143, the removal of the passenger seat, grab rail and passenger footrests is required as described in the Service Manual, and the carrying of passengers is not permitted.

A passenger who is not able to reach the footrests will be unable to sit securely on the motorcycle and may cause instability leading to loss of motorcycle control and an accident.

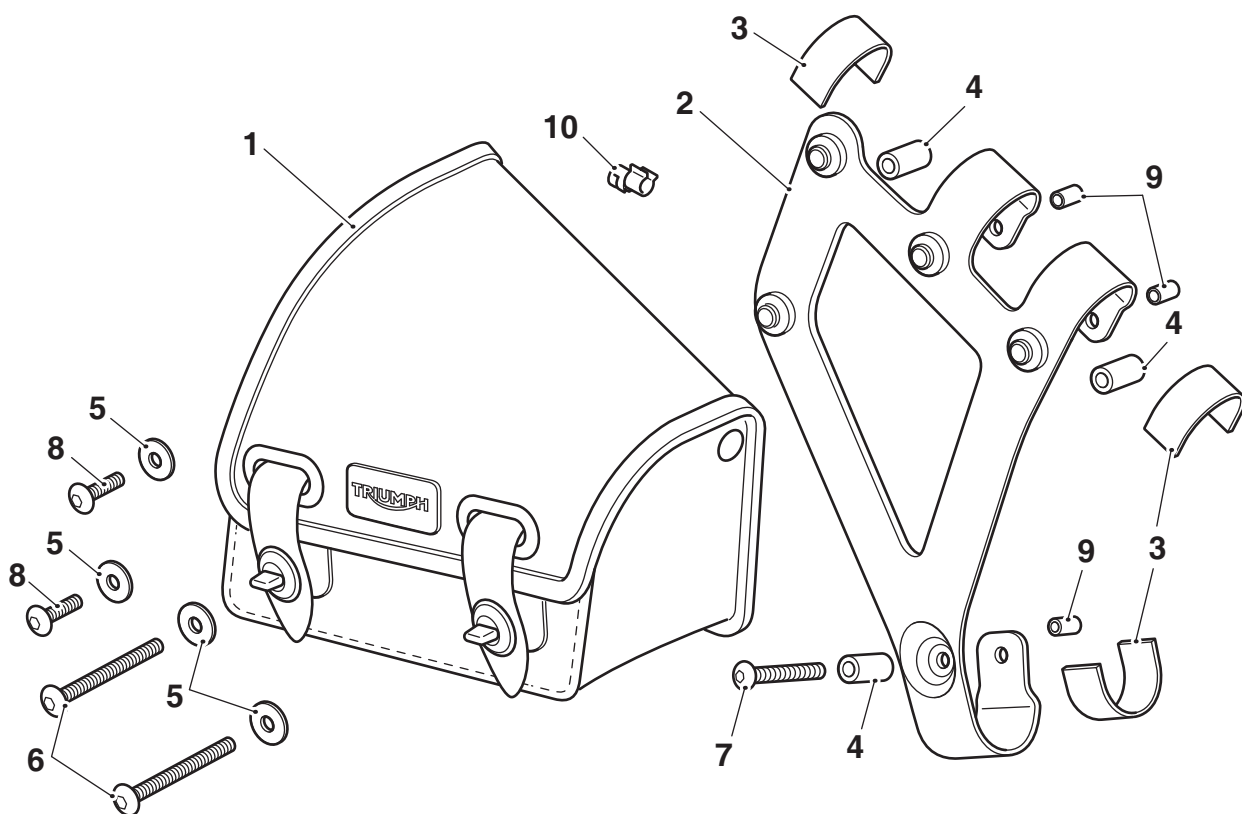
Note:

- **When fitting a Swinging Arm Bag Kit to the motorcycle it is recommended that Triumph Accessory Kit A9700593 is also fitted for aesthetic purposes.**

Thank you for choosing this Triumph genuine accessory kit. This accessory kit is the product of Triumph's use of proven engineering, exhaustive testing, and continuous striving for superior reliability, safety and performance.

Completely read all of these instructions before commencing the installation of the accessory kit in order to become thoroughly familiar with the kit's features and the installation process.

These instructions should be considered a permanent part of your accessory kit, and should remain with it even if your accessory equipped motorcycle is subsequently sold.



1.	Swinging arm bag	1 off	7.	Fixing, M6 x 40 mm	1 off
2.	Mounting bracket	1 off	8.	Fixing, M6 x 20 mm	2 off
3.	Rubber pad	3 off	9.	Rubber cap	3 off
4.	Spacer	3 off	10.	Cable clip	1 off
5.	Washer	4 off	11.	Cleaning wipe (not shown)	1 off
6.	Fixing, M6 x 55 mm	2 off			

Warning

Fit only genuine Triumph accessories to those models approved by Triumph as listed in the associated Triumph fitting instructions. The accessory kits covered in this instruction are designed for use on specific models of Triumph motorcycle. The accessory kits and the models applicable are listed at the start of the instruction. They should never be fitted to any other Triumph model or to any other manufacturer's motorcycle. Fitting an accessory kit to a Triumph model not listed, or to any other manufacturer's motorcycle will affect the performance, stability and handling of the motorcycle. This may affect the rider's ability to control the motorcycle and could result in an accident causing severe injuries or death.

Warning

Always have Triumph approved parts, accessories and conversions fitted by a trained technician of an authorised Triumph dealer. The fitment of parts, accessories and conversions by a technician who is not of an authorised Triumph dealer may affect the handling, stability or other aspects of the motorcycle's operation which may result in loss of motorcycle control and an accident.

Warning

Throughout this operation, ensure that the motorcycle is stabilised and adequately supported to prevent risk of injury from the motorcycle falling.

Warning

A torque wrench of known accurate calibration must be used when fitting this accessory kit. Failure to tighten any of the fasteners to the correct torque specification may affect motorcycle performance, handling and stability. This may result in loss of motorcycle control and an accident.

Warning

If the engine has recently been running, the exhaust system will be hot. Before working on or near the exhaust system, allow sufficient time for the system to cool, as touching any part of a hot exhaust could cause burn injuries.

Note:

- Triumph offers a broad range of approved genuine accessories for your motorcycle. We cannot therefore cover all possible equipment variations in these instructions. For removal and installation of Triumph Genuine Accessories, always refer to the instructions supplied with the respective accessory kit. To obtain additional copies of any Triumph accessory instructions, visit www.triumphinstructions.com or contact your authorised Triumph dealer.

Installation

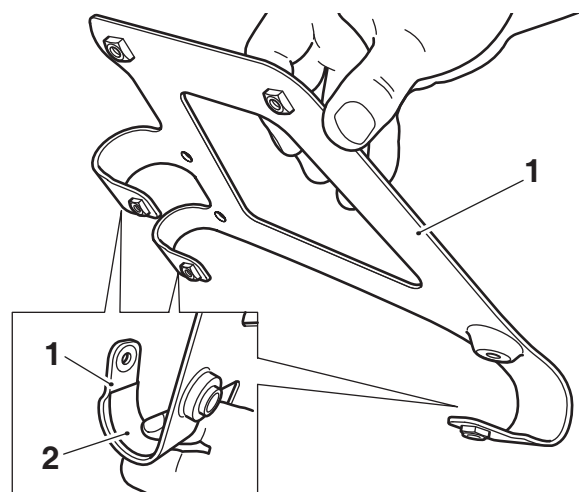
Note:

- This instruction shows fitment of the swinging arm bag on Bonneville Bobber models. The procedure is the same for Bonneville Speedmaster models from VIN 739143.
- The swinging arm bag kit must only be fitted to the left hand side of the motorcycle.

Note:

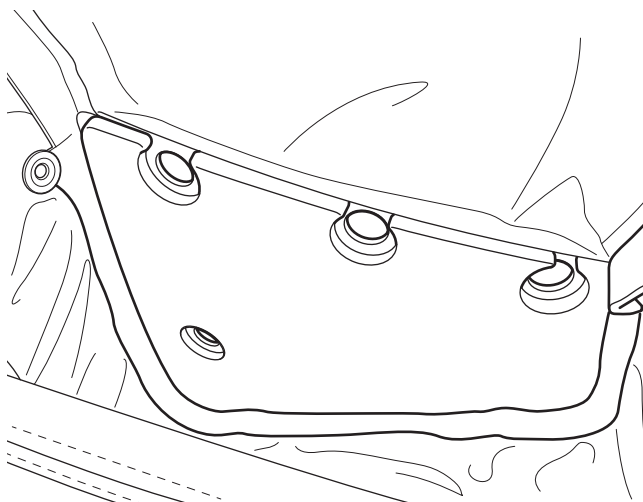
- Read the warning notices printed on the cleaning wipe packet provided in the kit.
- The surface to which the rubber pads are affixed must be clean and dry to ensure that the adhesive has a sound base to adhere to. Use a cleaning wipe supplied for this purpose.

- Remove the protective strips from the back of the rubber pads from the kit and fit the rubber pads to the mounting bracket, as shown below.

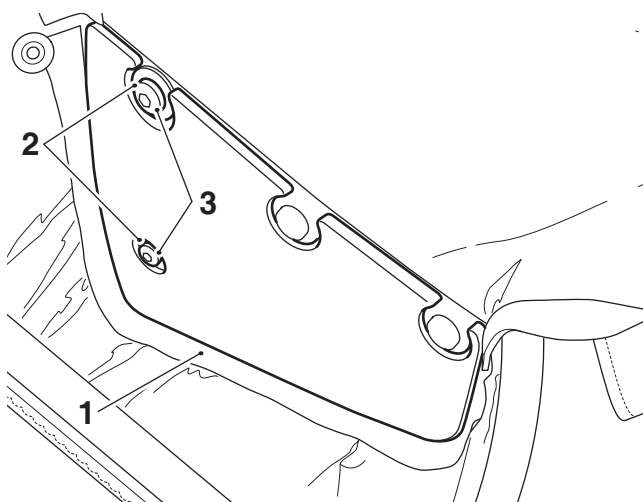


- Mounting bracket
- Rubber pads

2. Peel back the inner liner from inside the swinging arm bag to expose the mounting holes as shown.

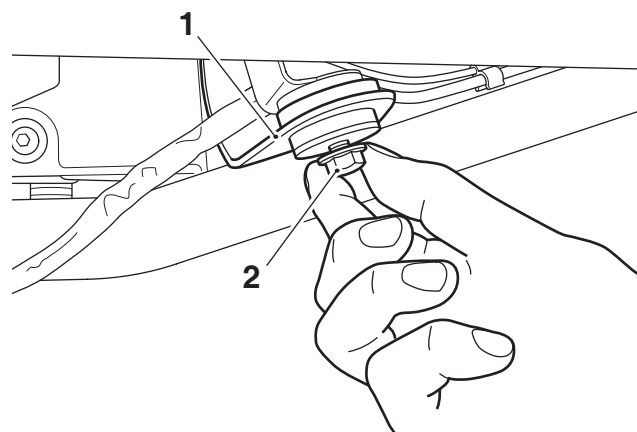


3. Align the two front fixing holes in the swinging arm bag with the two weld nuts at the front of the mounting bracket. Fit the two M6 x 20 mm fixings and washers from the kit. Tighten the fixings to **9 Nm**.



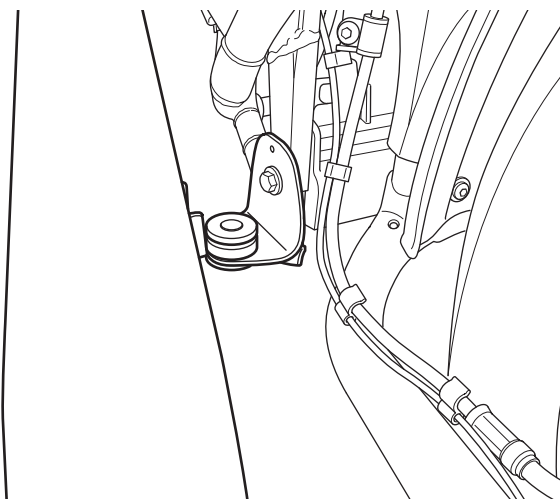
1. Swinging arm bag
2. Washers
3. Fixings, M6 x 20 mm

4. Remove the exhaust silencer rear fixing. Retain the fixing for reuse.



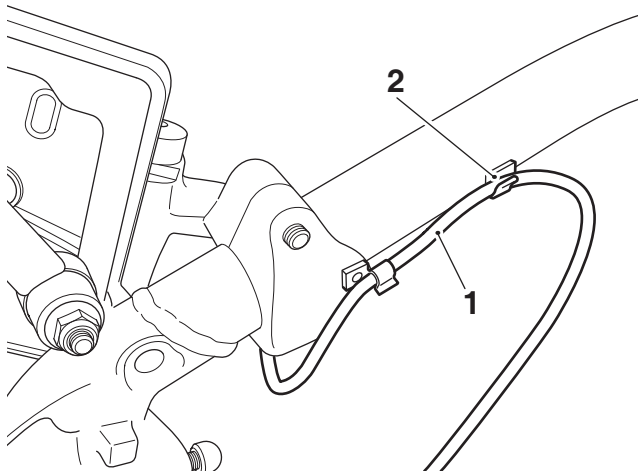
1. Exhaust silencer rear mounting
2. Fixing

5. Move the exhaust silencer away from the mounting bracket as shown. Ensure the exhaust silencer is supported.



Note:

- If an accessory side mounted licence plate holder has been fitted continue from step 6. If an accessory side mounted licence plate holder has not been fitted continue from step 7.
6. Detach the licence plate light harness from the cable clip in the swinging arm and remove the cable clip from the swinging arm. Discard the cable clip.



1. Licence plate light harness
2. Cable clip



Caution

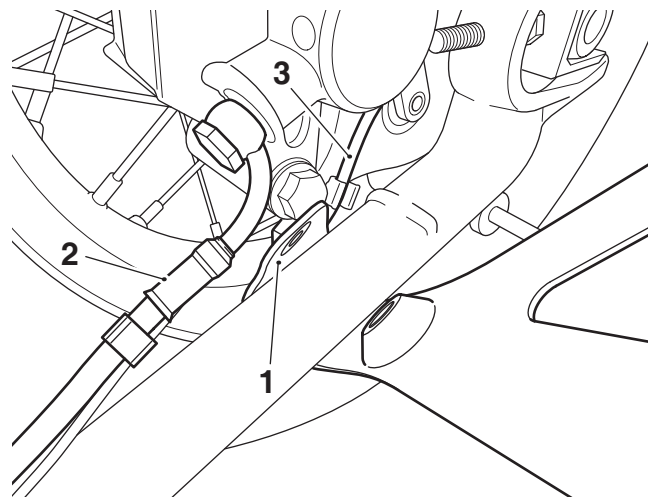
Care should be taken when positioning the swinging arm bag mounting bracket on the swinging arm to prevent damage to the swinging arm paintwork.



Warning

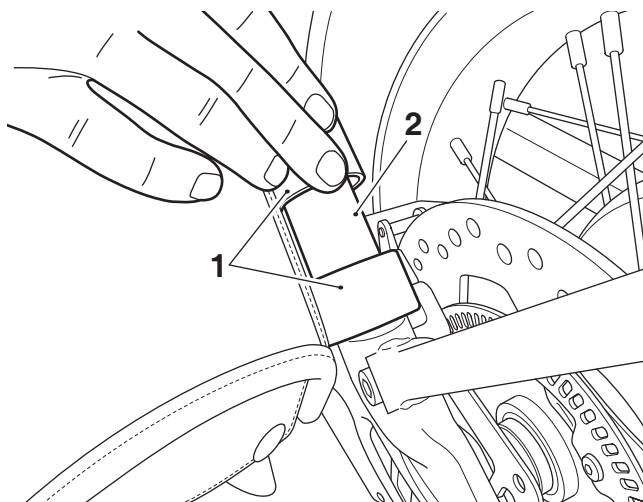
When fitting the swinging arm bag mounting bracket to the swinging arm ensure the rear brake hose or ABS harness are not trapped between the mounting bracket and swinging arm. If the brake hose or ABS harness are trapped between the mounting bracket and swinging arm they could become damaged and affect the braking performance of the motorcycle which may result in loss of motorcycle control and an accident.

7. Fit the lower section of the swinging arm bag mounting bracket to the lower swinging arm ensuring the brake hose or ABS harness are not trapped between the mounting bracket and swinging arm.



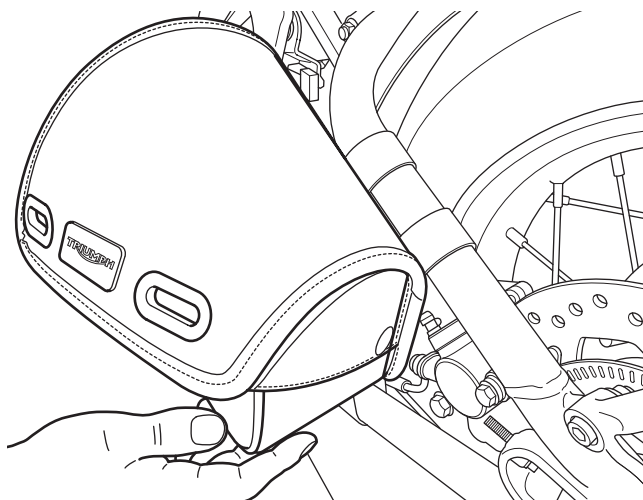
1. Mounting bracket
2. Rear brake hose
3. ABS harness

8. Position the mounting bracket to allow the upper sections of the mounting bracket to be fitted to the swinging arm, as shown.

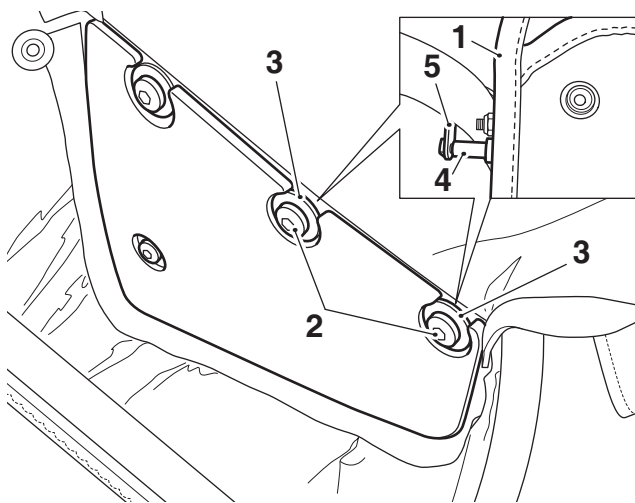


- 1. Mounting bracket
- 2. Swinging arm

9. Position the mounting bracket along the swinging arm towards the front of the motorcycle as far as possible, as shown.



10. Fit the two M6 x 55 mm fixings and washers through the swinging arm bag. Fit spacers on to the fixings between the mounting bracket, as shown. Do not fully tighten the fixings into the weld nuts in the mounting bracket at this stage.



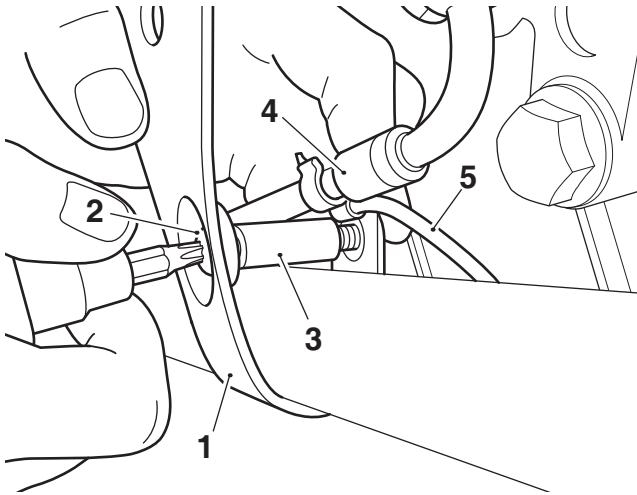
- 1. Swinging arm bag
- 2. Fixings, M6 x 55 mm
- 3. Washers
- 4. Spacer
- 5. Mounting bracket



Warning

When fitting the swinging arm bag lower mounting bracket fixings ensure the rear brake hose or ABS harness are not trapped between the spacer and the swinging arm. If the brake hose or ABS harness are trapped between the spacer and the swinging arm they could become damaged and affect the braking performance of the motorcycle which may result in loss of motorcycle control and an accident.

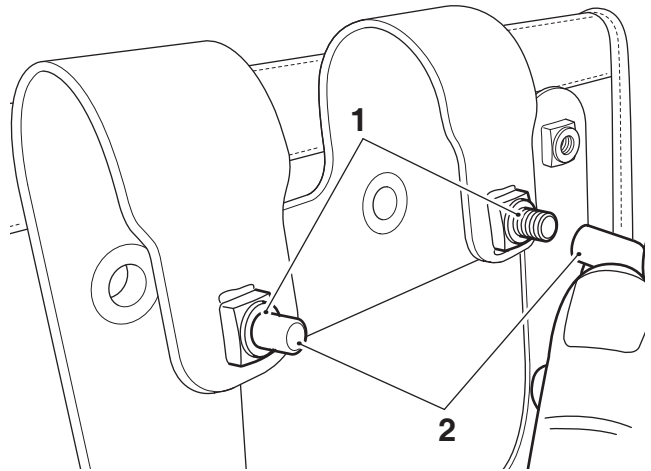
11. Fit the M6 x 40 mm fixing through the mounting bracket lower fixing position and fit a spacer on to the fixing between the mounting bracket as shown. Ensure the brake hose or ABS harness are not trapped between the swinging arm and spacer. Do not fully tighten the fixing into the weld nuts in the mounting bracket at this stage.



1. Mounting bracket
2. Fixing, M6 x 40 mm
3. Spacer
4. Rear brake hose
5. ABS harness

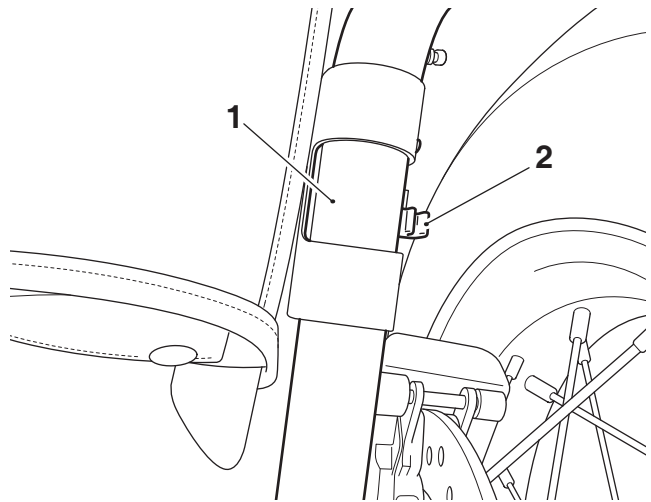
12. While ensuring the mounting bracket is held in position as far forward as possible on the swinging arm, tighten the upper and lower mounting bracket fixings to **9 Nm**.
13. Reposition the inner liner in the swinging arm bag to conceal all fixings.

14. Fit the rubber caps to the exposed thread sections of the upper and lower fixings at the rear of the mounting bracket, as shown.



1. Fixings, top mounting shown
2. Rubber cap

15. Refit the exhaust silencer to the mounting bracket and secure with the original fixing. Tighten the fixing to **19 Nm**.
16. If an accessory side mounted licence plate holder kit has been fitted to the motorcycle, fit the cable clip from the kit to the rear of the swinging arm as shown.



1. Swinging arm
2. Cable clip

17. Attach the licence plate light harness to the cable clip.

Care of the Swinging Arm Bag



Caution

Use of chemicals or high-pressure spray washers is not recommended for cleaning the swinging arm bag. Using chemicals or pressure washers may damage the swinging arm bag.

Note:

- **Placing light coloured clothing or other items next to a waxed cotton swinging arm bag may allow the wax to bleed, causing stains or marks.**
- **The swinging arm bag is constructed from natural materials therefore scratches and scuffs will develop naturally, enhancing the appearance of the bag.**

To maintain the appearance of your product, we recommend that you periodically clean the swinging arm bag. Your Triumph leather and waxed cotton swinging arm bag is a natural product and a lack of care can result in damage and permanent wear.

Cleaning Instructions

Frequent, regular cleaning is an essential part of the maintenance of your swinging arm bag. If regularly cleaned, the appearance will be preserved for many years. Cleaning with cold water and a sponge is essential at all times but particularly so after exposure to sea breezes, sea water, dusty or muddy roads and in winter when roads are treated for ice and snow. A brush can be used to remove dirt or grit in extreme circumstances.

Do not use hot water or household detergent, as the use of such products will lead to premature deterioration.

Although, under the terms of your motorcycle warranty, cover is provided, the owner is expected to observe this reasonable advice which will safeguard against premature deterioration and enhance the appearance of the motorcycle.

Follow these simple instructions below to maintain the look of the swinging arm bag:

- Do not use household cleaning products, bleach, detergents containing bleach or any kind of solvent to clean the swinging arm bag; use a damp sponge only.
- Do not immerse the swinging arm bag in water.
- Do not store items such as damp or wet clothing inside the swinging arm bag as this can cause damage to the leather and waxed cotton or the stored items.

- Avoid direct heat from fires and radiators which can dry out and distort the leather and waxed cotton.
- Avoid direct sunlight for extended periods which can dry out and discolour the leather and waxed cotton.
- Do not dry the swinging arm bag by applying direct heat to it at any time.
- If the swinging arm bag does get wet, absorb any excess water with a soft clean cloth then leave the product to dry naturally at room temperature.
- Avoid exposing the swinging arm bag to high levels of salt, for example sea/salt water or road surfaces that have been treated during the winter for ice and snow.
- If exposure to salt is unavoidable, clean your product immediately after each exposure using a damp sponge then leave the product to dry naturally at room temperature.
- Allow mud to dry before wiping off. Use a soft cloth to remove the mud then leave it to dry naturally at room temperature.
- Gently clean any minor marks with a damp sponge then leave it to dry naturally at room temperature.
- Place the product into a fabric bag or cardboard box to protect them when in storage. Do not put the swinging arm bag into a plastic bag.



Caution

During heavy rain conditions remove any stored items from the swinging arm bag and place them in a suitable waterproof protector. The swinging arm bag is only shower proof and does not provide full waterproof protection.



Caution

The swinging arm bag is subject to high shock loadings and is not suitable to carry electronic devices or fragile items. Electronic devices or fragile items could be damaged if carried in the swinging arm bag.

 **Warning**

The maximum safe load for the swinging arm bag is 1 kg (2.2 lbs). Never exceed this loading limit as this may cause the motorcycle to become unstable leading to loss of control and an accident.

 **Warning**

After fitting the accessory kit the motorcycle will exhibit new handling characteristics. Operate the motorcycle in a safe area free from traffic to gain familiarity with any new characteristics. Operation of the motorcycle when not familiar with any new handling characteristics may result in loss of motorcycle control and an accident.

 **Warning**

If, after fitting this accessory kit, you have any doubt about the performance of any aspect of the motorcycle, contact an authorised Triumph dealer and do not ride the motorcycle until the authorised dealer has declared it fit for use. Riding a motorcycle when there is any doubt as to any aspect of the performance of the motorcycle may result in loss of motorcycle control and an accident.

 **Warning**

Never ride an accessory-equipped motorcycle at speeds above 80 mph (130 km/h).
The presence of accessories will cause changes in the stability and handling of the motorcycle. Failure to allow for changes in motorcycle stability may result in loss of motorcycle control and an accident.
Remember that the 80 mph (130 km/h) limit will be reduced by the fitting of non-approved accessories, incorrect loading, worn tyres, overall motorcycle condition and poor road or weather conditions.

 **Warning**

The motorcycle must not be operated above the legal road speed limit except in closed-course conditions.

 **Warning**

Only operate this Triumph motorcycle at high speed in closed-course, on-road competition or on closed-course racetracks. High-speed operation should only be attempted by riders who have been instructed in the techniques necessary for high speed riding and are familiar with the motorcycle's characteristics in all conditions.

High-speed operation in any other circumstances is dangerous and may result in loss of motorcycle control and an accident.