



## Accessory Fitting Instructions

Rugged Pannier	
Kit Number	Models Affected
A9510433 A9510665	Street Scrambler from VIN 914448, Scrambler 900, Scrambler 1200 XC, Scrambler 1200 XE to VIN BN8495
Pannier Rail Kit	
Kit Number	Models Affected
A9510490	Street Scrambler from VIN 914448, Scrambler 900
A9510491	Scrambler 1200 XC, Scrambler 1200 XE to VIN BN8495

Thank you for choosing this Triumph genuine accessory kit. This accessory kit is the product of Triumph's use of proven engineering, exhaustive testing, and continuous striving for superior reliability, safety and performance.

Completely read all of these instructions before commencing the installation of the accessory kit in order to become thoroughly familiar with the kit's features and the installation process.

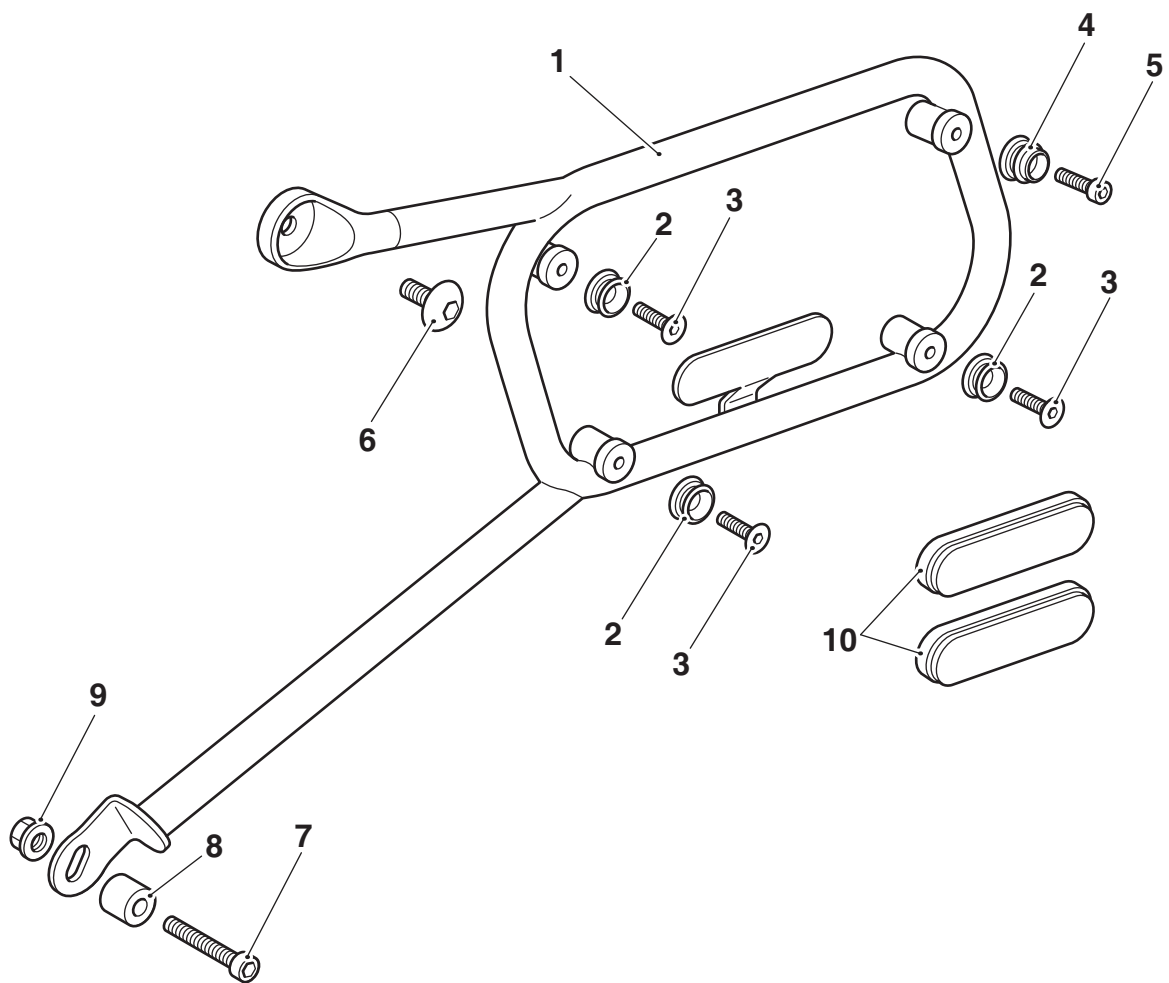
These instructions should be considered a permanent part of your accessory kit, and should remain with it even if your accessory equipped motorcycle is subsequently sold.

**Parts Supplied: A9510433, A9510665**



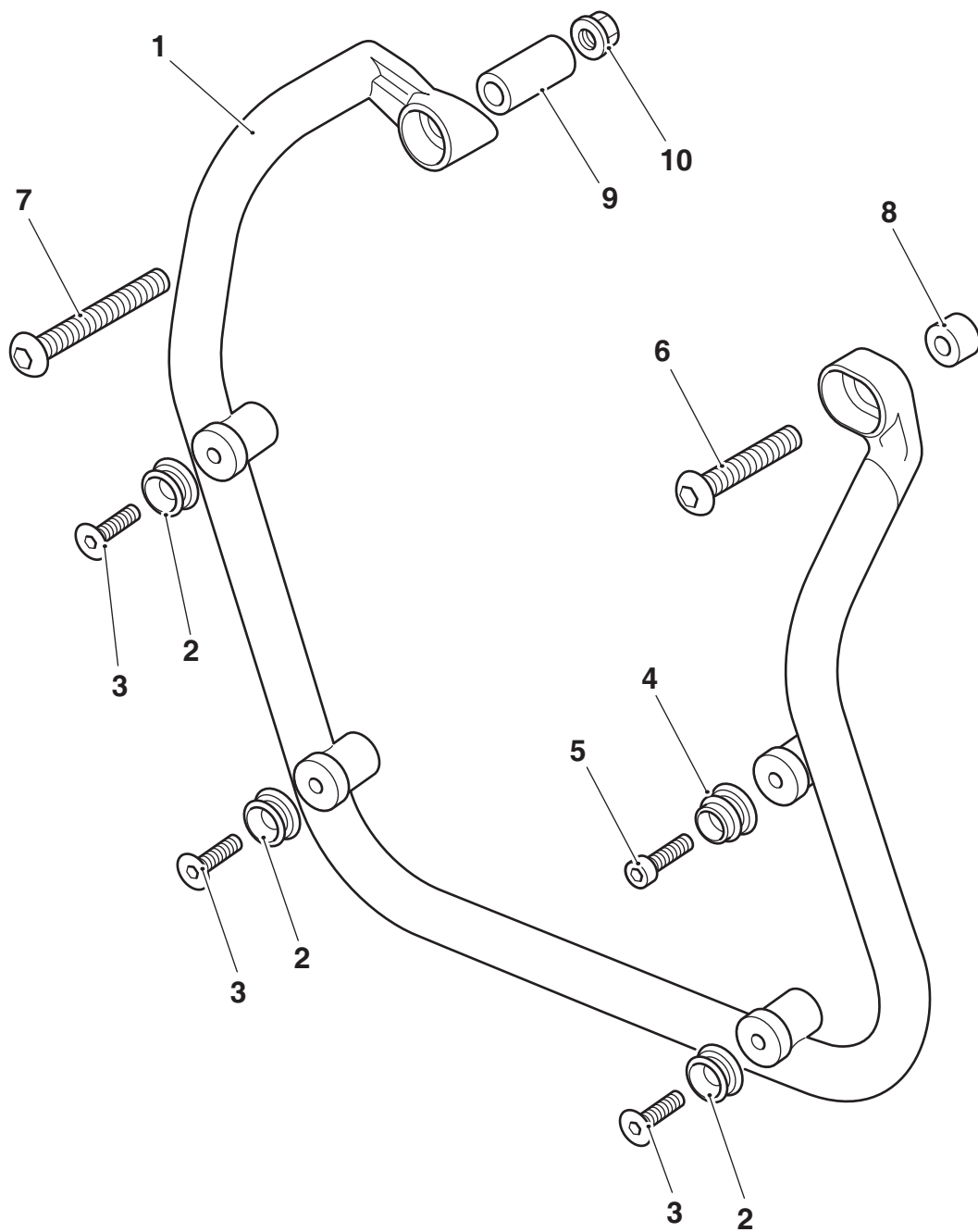
1. Rugged pannier	1 off	
-------------------	-------	--

Parts Supplied: A9510490



1. Pannier rail	1 off	6. Fixing, M8 x 20 mm	1 off
2. Bobbin	3 off	7. Fixing, M8 x 45 mm	1 off
3. Fixing, M6 x 20 mm, countersunk head	3 off	8. Spacer	1 off
4. Latched bobbin	1 off	9. Lock nut, M8	1 off
5. Fixing, M6 x 20 mm, cap head	1 off	10. Reflector	2 off

Parts Supplied: A9510491



1. Pannier rail	1 off	6. Fixing, M8 x 40 mm	1 off
2. Bobbin	3 off	7. Fixing, M8 x 60 mm	1 off
3. Fixing, M6 x 20 mm, countersunk head	3 off	8. Spacer, 8.5 mm	1 off
4. Latched bobbin	1 off	9. Spacer, 25 mm	1 off
5. Fixing, M6 x 20 mm, cap head	1 off	10. Lock nut, M8	1 off

## Warning

Fit only genuine Triumph accessories to those models approved by Triumph as listed in the associated Triumph fitting instructions. The accessory kits covered in this instruction are designed for use on specific models of Triumph motorcycle. The accessory kits and the models applicable are listed at the start of the instruction. They should never be fitted to any other Triumph model or to any other manufacturer's motorcycle. Fitting an accessory kit to a Triumph model not listed, or to any other manufacturer's motorcycle will affect the performance, stability and handling of the motorcycle. This may affect the rider's ability to control the motorcycle and could result in an accident causing severe injuries or death.

## Warning

Always have Triumph approved parts, accessories and conversions fitted by a trained technician of an authorised Triumph dealer. The fitment of parts, accessories and conversions by a technician who is not of an authorised Triumph dealer may affect the handling, stability or other aspects of the motorcycle's operation which may result in loss of motorcycle control and an accident.

## Warning

Throughout this operation, ensure that the motorcycle is stabilised and adequately supported to prevent risk of injury from the motorcycle falling.

## Warning

A torque wrench of known accurate calibration must be used when fitting this accessory kit. Failure to tighten any of the fasteners to the correct torque specification may affect motorcycle performance, handling and stability. This may result in loss of motorcycle control and an accident.

## Warning

If the engine has recently been running, the exhaust system will be hot. Before working on or near the exhaust system, allow sufficient time for the system to cool, as touching any part of a hot exhaust could cause burn injuries.

### Note:

- Triumph offers a broad range of approved genuine accessories for your motorcycle. We cannot therefore cover all possible equipment variations in these instructions. For removal and installation of Triumph Genuine Accessories, always refer to the instructions supplied with the respective accessory kit. To obtain additional copies of any Triumph accessory instructions, visit [www.triumphinstructions.com](http://www.triumphinstructions.com) or contact your authorised Triumph dealer.

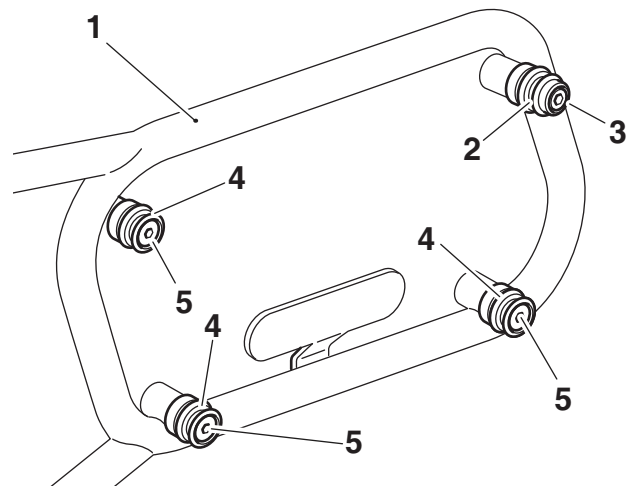
## Pannier Rail Installation

### Note:

- For Street Scrambler from VIN 914448 and Scrambler 900 models follow steps 1 to 11. For Scrambler 1200 XC and Scrambler 1200 XE to VIN BN8495 models follow steps 12 to 20.

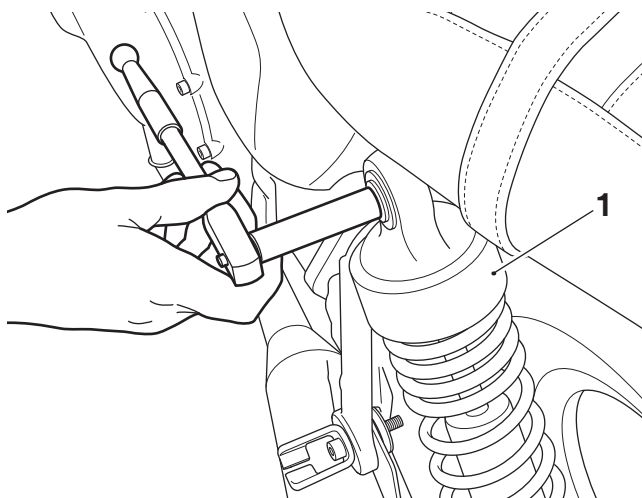
### Street Scrambler from VIN 914448 and Scrambler 900

- Fit the latched bobbin to the upper rear mounting on the pannier rail and secure with the M6 x 20 mm cap head fixing, as shown. Fit the remaining bobbins from the kit to the two front and lower rear mountings and secure with the M6 x 20 mm countersunk head fixings, as shown. Tighten all fixings to **9 Nm**.



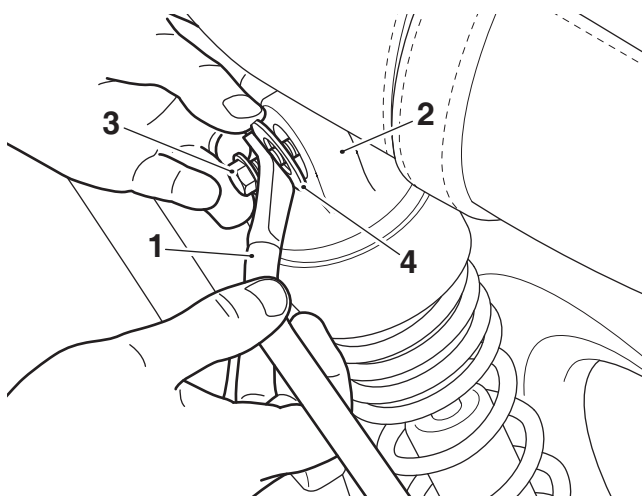
- Pannier rail
- Latched bobbin
- Fixing, M6 x 20 mm cap head
- Bobbins
- Fixings, M6 x 20 mm countersunk head

- Remove the left hand side rear suspension unit top fixing and washer. Retain the washer for reuse. Discard the fixing.



**1. Rear suspension unit, left hand**

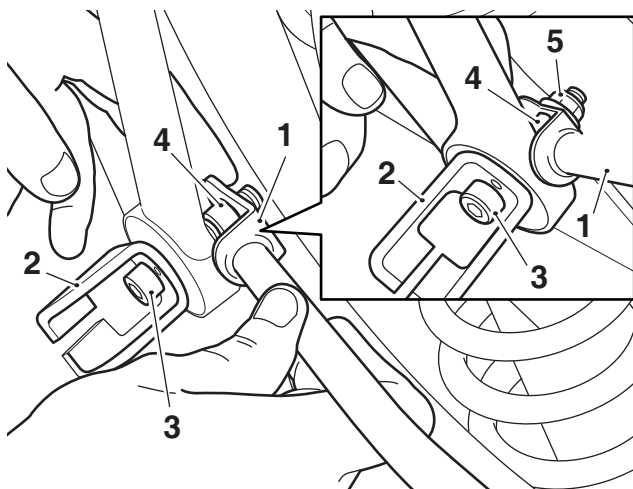
- Install the pannier rail to the left hand side of the motorcycle aligning the top fixing position with the rear suspension unit top mounting. Fit the M8 x 20 mm fixing from the kit and the original washer to hold the pannier rail in position. Do not fully tighten the fixing at this stage.



- Pannier rail
- Rear suspension unit, top mounting
- Fixing, M8 x 20 mm
- Washer

- Remove the left hand rear footpeg, as described in the Service Manual. Retain the footpeg assembly for reuse.
- Remove the left hand rear footpeg mounting bracket. Discard the lock nut. Retain the fixing for reuse if the motorcycle is to be returned to its original condition.
- Collect the M8 x 45 mm fixing, spacer and lock nut from the kit.

- Refit the left hand rear footpeg mounting bracket using the M8 x 45 mm bolt. Fit the spacer and pannier rail onto the bolt as shown and secure with the lock nut. Tighten the bolt to **24 Nm**.



- Pannier rail
- Rear footpeg mounting bracket
- Fixing, M8 x 45 mm
- Spacer
- Lock nut

- Refit the left hand rear footpeg assembly, as described in the Service Manual.
- Tighten the pannier rail top fixing to **28 Nm**.
- Collect one of the reflectors from the kit.

**! Caution**

When fitting self-adhesive parts care must be taken to ensure positioning is correct and accurate. Once the adhesive has been attached to the mounting surface, there is no satisfactory method of removal or re-positioning if incorrectly aligned. Initial bonding is instant, full bonding is achieved after 72 hours.

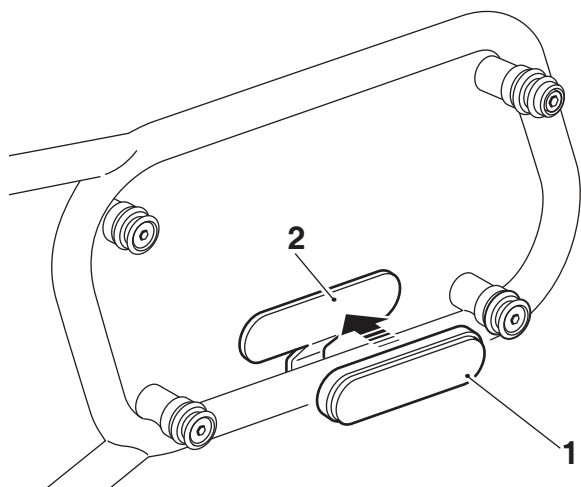
**Notice**

Failure to fit a reflector to the pannier rail as shown may contravene the law of your country, state or territory. This will render the motorcycle illegal for road use where such laws apply. Always fit reflectors as shown.

**Notice**

Do not fit red reflectors in Japan or China as this will contravene Japanese and Chinese law and render the motorcycle illegal for road use.

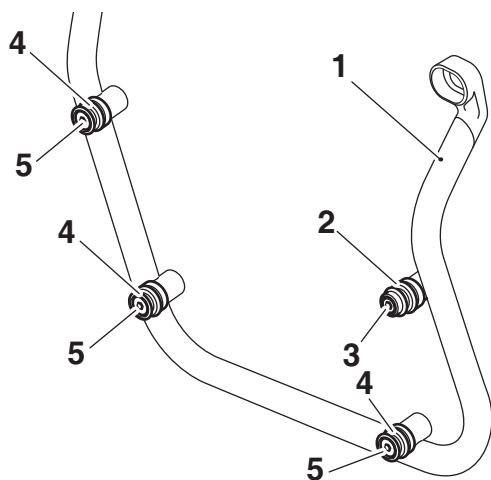
- Peel the protective film from the back of the reflector. Fit the reflector to the pannier rail in the position shown, ensuring the surface of the mounting area is clean and free from grease.



- Reflector
- Pannier rail mounting area

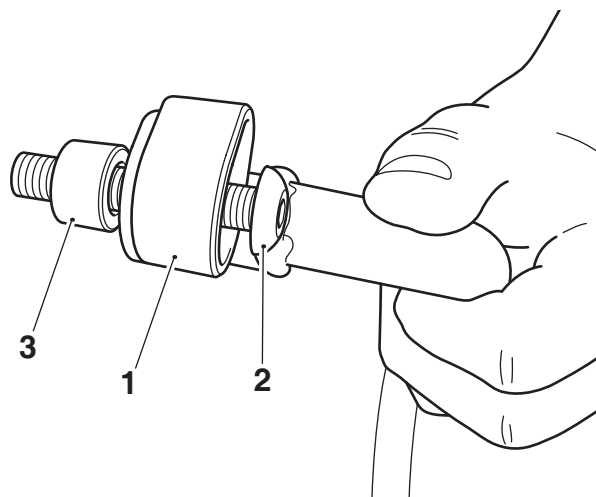
#### Scrambler 1200 XC, Scrambler 1200 XE to VIN BN8495

- Fit the latched bobbin to the upper rear mounting on the pannier rail and secure with the M6 x 20 mm cap head fixing, as shown. Fit the remaining bobbins from the kit to the two front and lower rear mountings and secure with the M6 x 20 mm countersunk head fixings, as shown. Tighten all fixings to **9 Nm**.



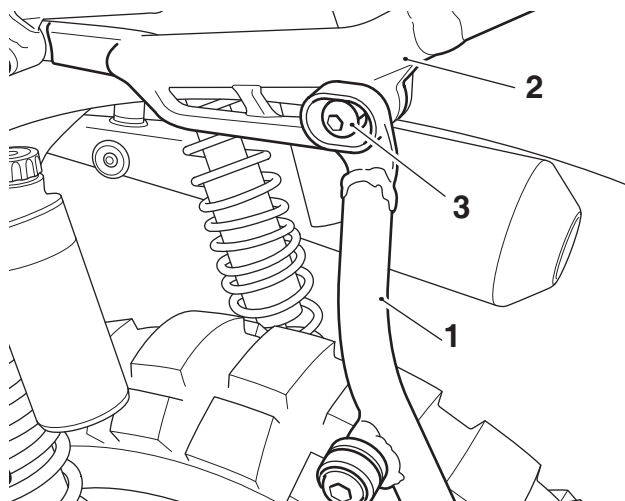
- Pannier rail
- Latched bobbin
- Fixing, M6 x 20 mm, cap head
- Bobbins
- Fixings, M6 x 20 mm, countersunk head

- Remove the seat and underseat moulding, as described in the Service Manual.
- Remove the grab rail fixings, front and rear, from the left hand side of the motorcycle. Retain the fixings for reuse if the motorcycle is to be returned to its original condition.
- Fit the 8.5 mm spacer and M8 x 40 mm fixing from the kit to the pannier rail rear mounting position, as shown.



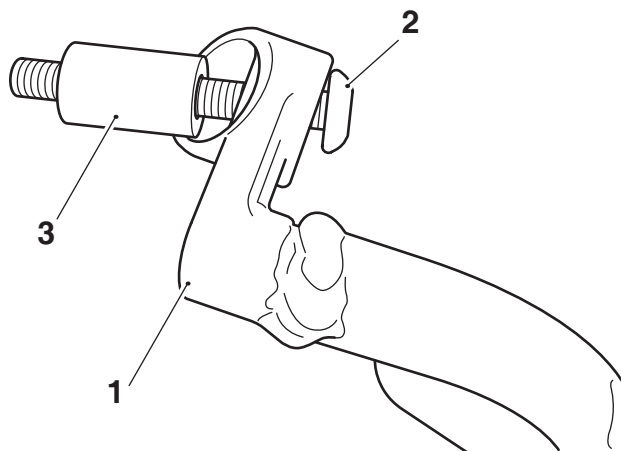
- Pannier rail rear mounting
- Fixing, M8 x 40 mm
- Spacer, 8.5 mm

- Align the pannier rail with the rear grab rail fixing position on the left hand side of the motorcycle. Fit the M8 x 40 mm fixing to the grab rail, do not fully tighten the fixing at this stage.



- Pannier rail
- Grab rail
- Fixing, M8 x 40 mm

- Fit the 25 mm spacer and M8 x 60 mm fixing from the kit to the pannier rail front mounting position, as shown.



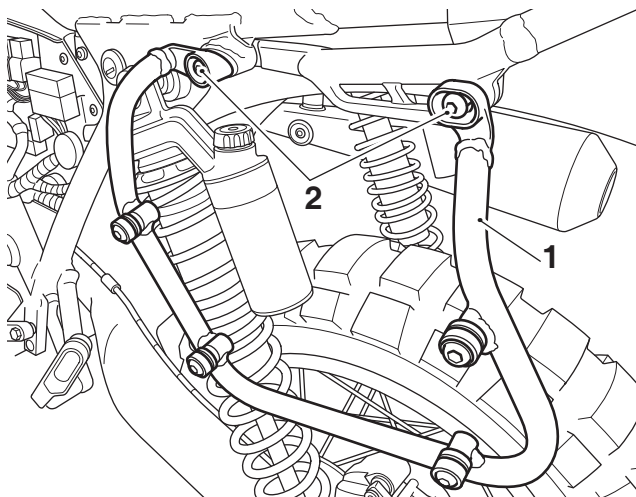
- Pannier rail front mounting
- Fixing, M8 x 60 mm
- Spacer, 25 mm

- Align the pannier rail with the front grab rail fixing position. Fit the M8 x 60 mm fixing through the grab rail and motorcycle frame and fit the M8 lock nut from the kit, as shown.



- Pannier rail
- Grab rail
- Fixing, M8 x 60 mm
- Lock nut, M8

- Tighten the pannier rail fixings to **28 Nm**.



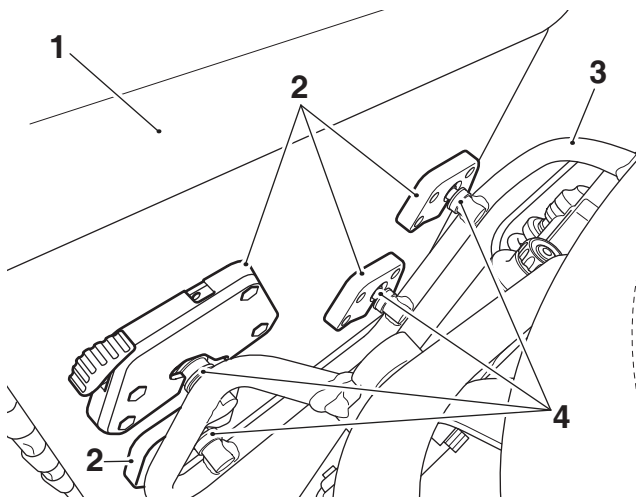
- Pannier rail
- Fixings

- Refit the seat and underseat moulding, as described in the Service Manual.

## Pannier Installation

### All Models

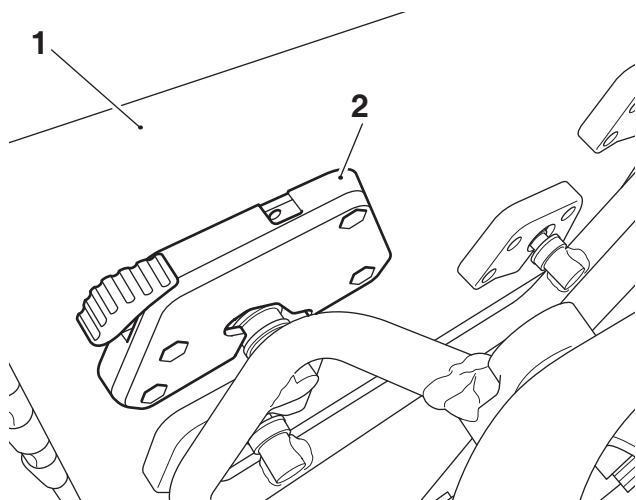
- Align the four pannier mounts on the rear of the pannier with the bobbins on the pannier rail.



- Pannier
- Pannier mounts
- Pannier rail
- Bobbins

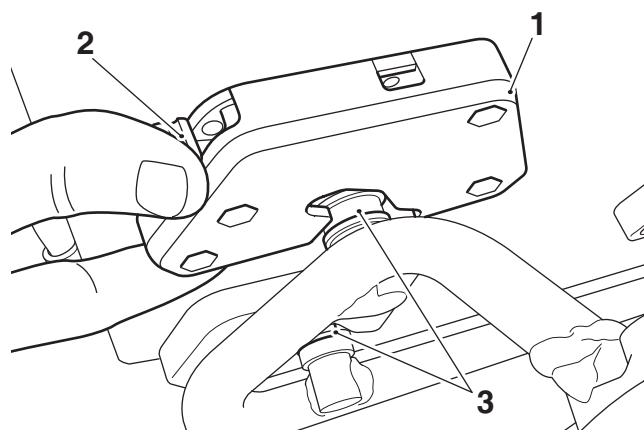


- Push the pannier down and towards the front of the motorcycle to fully engage the pannier mounts on the bobbins. There should be an audible click sound from the pannier latch mount when the pannier is fully engaged.



- Pannier
- Pannier latch mount

- Pull the pannier rearwards to ensure it is correctly engaged on the pannier rail and cannot become detached. Ensure any loose straps are tight and neatly stowed.
- To release the pannier, press the pannier latch mount release lever down and pull the pannier up and towards the rear of the motorcycle to disengage it from the bobbins.



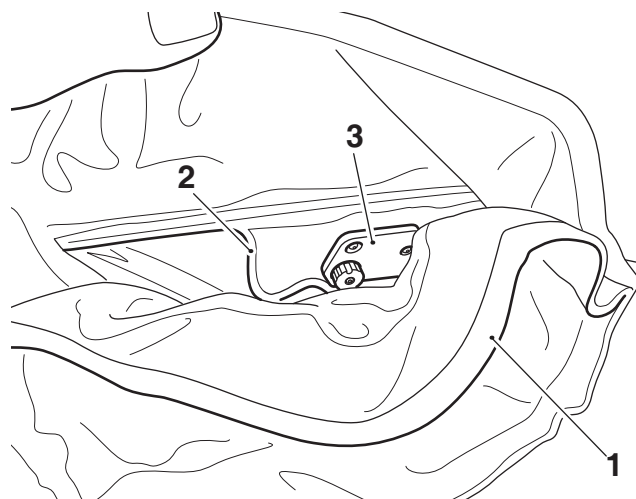
- Pannier latch mount
- Latch mount release lever
- Bobbins (rear mounts shown)

## Locking the Pannier to the Pannier Rail

### Note:

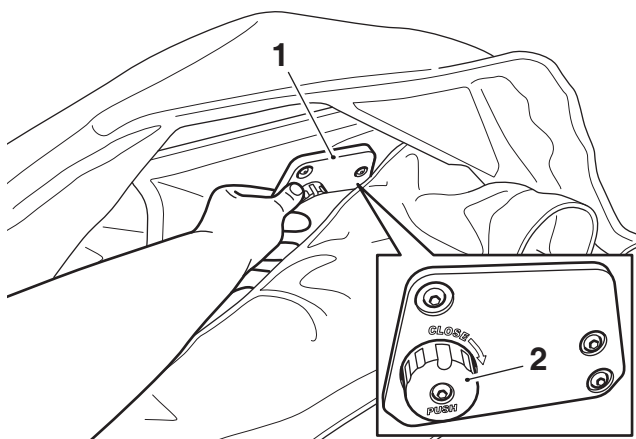
- The motorcycle can be ridden with the pannier latched to the pannier rail as described in step 1. It is advised, however, for additional security that the pannier is locked to the pannier rail.

- With the pannier correctly latched to the pannier rail, open the pannier and release the waterproof lining and cover panel from the rear of the pannier to locate the pannier lock, as shown.



- Waterproof lining
- Cover panel
- Pannier lock

- Push the knob on the pannier lock in and turn it a quarter turn in a clockwise direction to lock the pannier to the pannier rail.



- Pannier lock
- Knob

- Re-attach the cover panel and waterproof lining inside the pannier.
- To unlock the pannier from the pannier rail follow steps 5 to 7, but turn the pannier lock knob anti-clockwise at step 6.



## Reflector Fitment

Street Scrambler from VIN 914448 Only and Scrambler 900



### Caution

When fitting self-adhesive parts care must be taken to ensure positioning is correct and accurate. Once the adhesive has been attached to the mounting surface, there is no satisfactory method of removal or re-positioning if incorrectly aligned. Initial bonding is instant, full bonding is achieved after 72 hours.

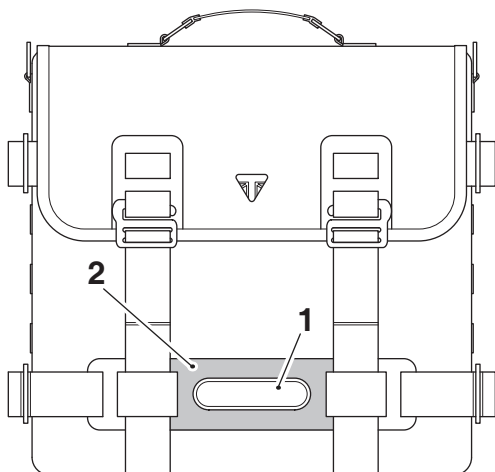
### Notice

Failure to fit a reflector to the pannier as shown may contravene the law of your country, state or territory. This will render the motorcycle illegal for road use where such laws apply. Always fit reflectors as shown.

### Notice

Do not fit red reflectors in Japan or China as this will contravene Japanese and Chinese law and render the motorcycle illegal for road use.

1. Peel the protective film from the back of the reflector.
2. Fit the reflector to the pannier in the position shown, ensuring the surface of the mounting area is clean and free from grease.



1. Reflector
2. Mounting area

## Care of Panniers



### Caution

Use of chemicals or high-pressure spray washers is not recommended for cleaning the panniers. Using chemicals or pressure washers may damage the panniers.

#### Note:

- **The panniers are constructed from natural materials therefore scratches and scuffs will develop naturally, enhancing the appearance of the panniers.**

To maintain the appearance of your product, we recommend that you periodically clean the panniers. Your Triumph panniers are natural products and a lack of care can result in damage and permanent wear.

#### Cleaning Instructions

Frequent, regular cleaning is an essential part of the maintenance of your panniers. If regularly cleaned, the appearance will be preserved for many years. Cleaning with cold water and a sponge is essential at all times but particularly so after exposure to sea breezes, sea water, dusty or muddy roads and in winter when roads are treated for ice and snow. A brush can be used to remove dirt or grit in extreme circumstances.

Do not use hot water or household detergent, as the use of such products will lead to premature deterioration.

Although, under the terms of your motorcycle warranty, cover is provided, the owner is expected to observe this reasonable advice which will safeguard against premature deterioration and enhance the appearance of the motorcycle.

Follow these simple instructions below to maintain the look of the panniers:

- Do not use household cleaning products, bleach, detergents containing bleach or any kind of solvent to clean the panniers; use a damp sponge only.
- Do not immerse the panniers in water.
- Do not store items such as damp or wet clothing inside the panniers as this can cause damage to the leather or the stored items.
- Avoid direct heat from fires and radiators which can dry out and distort the panniers.
- Avoid direct sunlight for extended periods which can dry out and discolour the leather.
- Do not dry the panniers by applying direct heat to them at any time.

- If the panniers do get wet, absorb any excess water with a soft clean cloth then leave the product to dry naturally at room temperature.
- Avoid exposing the panniers to high levels of salt, for example sea/salt water or road surfaces that have been treated during the winter for ice and snow.
- If exposure to salt is unavoidable, clean your product immediately after each exposure using a damp sponge then leave the product to dry naturally at room temperature.
- Allow mud to dry before wiping off. Use a soft cloth to remove the mud then leave them to dry naturally at room temperature.
- Gently clean any minor marks with a damp sponge then leave them to dry naturally at room temperature.
- Place the product into a fabric bag or cardboard box to protect them when in storage. Do not put the panniers into a plastic bag.

## Re-Treatment Instructions

### Note:

- **These instructions apply only to the waxed cotton fabric of the panniers. Do not apply wax to any other material.**

Using a proprietary cotton re-proofing wax, follow the simple instructions below to maintain the appearance, colour and water resistance of the panniers.

1. Lightly brush off any dirt or soil, and if necessary use a cold damp cloth to wipe down the pannier.
2. Heat the tin of re-proofing wax so that it becomes flexible and easy to apply. You can place the tin of wax in a pan of hot water and warm it gently.
3. Evenly apply the wax to the waxed cotton fabric of the panniers with a lint free cloth, paying particular attention to the seams.
4. Allow the wax to dry slightly and remove any excess wax build up.
5. Use a hair dryer to melt the wax into the wax cotton of the pannier to ensure an even spread of the wax across the pannier.



### Warning

The maximum safe load for the pannier is 5 kg (11 lbs). Never exceed this loading limit as this may cause the motorcycle to become unstable leading to loss of control and an accident.



### Warning

After fitting the accessory kit the motorcycle will exhibit new handling characteristics. Operate the motorcycle in a safe area free from traffic to gain familiarity with any new characteristics. Operation of the motorcycle when not familiar with any new handling characteristics may result in loss of motorcycle control and an accident.



### Warning

If, after fitting this accessory kit, you have any doubt about the performance of any aspect of the motorcycle, contact an authorised Triumph dealer and do not ride the motorcycle until the authorised dealer has declared it fit for use. Riding a motorcycle when there is any doubt as to any aspect of the performance of the motorcycle may result in loss of motorcycle control and an accident.



### Warning

Never ride an accessory-equipped motorcycle at speeds above 80 mph (130 km/h).

The presence of accessories will cause changes in the stability and handling of the motorcycle. Failure to allow for changes in motorcycle stability may result in loss of motorcycle control and an accident.

Remember that the 80 mph (130 km/h) limit will be reduced by the fitting of non-approved accessories, incorrect loading, worn tyres, overall motorcycle condition and poor road or weather conditions.



### Warning

Only operate this Triumph motorcycle at high speed in closed-course, on-road competition or on closed-course racetracks. High-speed operation should only be attempted by riders who have been instructed in the techniques necessary for high-speed riding and are familiar with the motorcycle's characteristics in all conditions.

High-speed operation in any other circumstances is dangerous and may result in loss of motorcycle control and an accident.



### Warning

The motorcycle must not be operated above the legal road speed limit except in closed-course conditions.