



Accessory Fitting Instructions

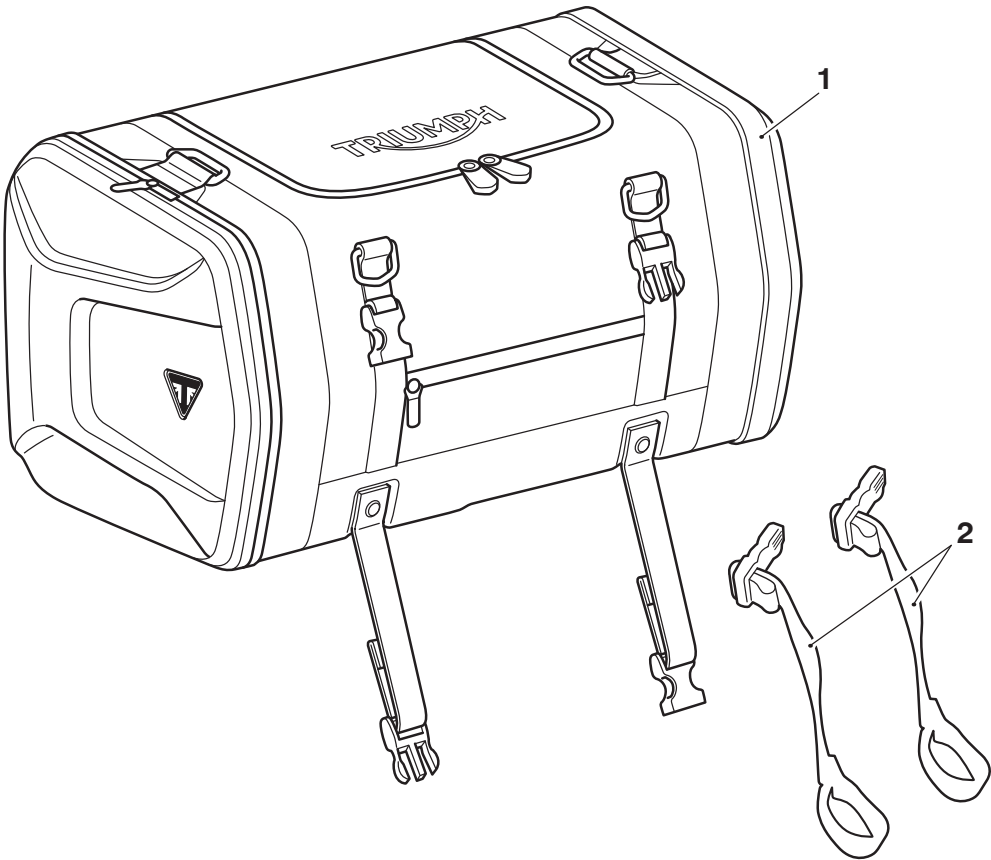
Thank you for choosing this Triumph genuine accessory kit. This accessory kit is the product of Triumph's use of proven engineering, exhaustive testing, and continuous striving for superior reliability, safety and performance.

Completely read all of these instructions before commencing the installation of the accessory kit in order to become thoroughly familiar with the kit's features and the installation process.

These instructions should be considered a permanent part of your accessory kit, and should remain with it even if your accessory equipped motorcycle is subsequently sold.

Tail Pack Kit	
Kit Number	Models
A9510296, A9510315	Tiger 900, Tiger 900 GT to VIN BM5542, Tiger 900 GT Pro to VIN BM5558, Tiger 900 GT LRH), Tiger 900 GT Aragon Edition, Tiger 900 Rally, Tiger 900 Rally Pro to VIN BM8581, Tiger 900 Rally Aragon Edition, Tiger 850 Sport

Parts supplied



1. Tail pack, 45L	1 off	2. Mounting strap	2 off
-------------------	-------	-------------------	-------

⚠ WARNING

Fit only genuine Triumph accessories to those models approved by Triumph as listed in the associated Triumph fitting instructions.

The accessory kits covered in this instruction are designed for use on specific models of Triumph motorcycle. The accessory kits and the models applicable are listed at the start of the instruction. They should never be fitted to any other Triumph model or to any other manufacturer's motorcycle.

Fitting an accessory kit to a Triumph model not listed, or to any other manufacturer's motorcycle, will affect the performance, stability and handling of the motorcycle.

Failure to follow the advice above may lead to loss of motorcycle control which could result in serious injury or death.

⚠ WARNING

Always have Triumph approved parts, accessories and conversions fitted by a competent person with the specialist knowledge and technical understanding of motorcycles, such as an authorised Triumph dealer.

The fitment of parts, accessories and conversions by a person without the specialist knowledge and technical understanding of motorcycles may affect the handling, stability or other aspects of the motorcycle's operation.

Failure to follow the advice above may lead to loss of motorcycle control which could result in serious injury or death.

⚠ WARNING

A torque wrench of known accurate calibration must be used when fitting this accessory kit.

Failure to tighten any of the fasteners to the correct torque specification may affect motorcycle performance, handling and stability.

Failure to follow the advice above may lead to loss of motorcycle control which could result in serious injury or death.

⚠ WARNING

Make sure the motorcycle is stabilised and adequately supported.

Do not support the motorcycle on any ancillary component, the exhaust system or any other non structural parts of the motorcycle frame.

A correctly supported motorcycle will help prevent it from falling.

An unstable motorcycle may fall resulting in motorcycle damage, serious injury or death.

NOTICE

Triumph offers a broad range of approved genuine accessories for your motorcycle.

We cannot therefore cover all possible equipment variations in these instructions. For removal and installation of Triumph Genuine Accessories, always refer to the instructions supplied with the respective accessory kit.

To obtain additional copies of any Triumph accessory instructions, visit www.triumphinstructions.com or contact your authorised Triumph dealer.

⚠ WARNING

If the engine has recently been running, the exhaust system will be hot. Before working on or near the exhaust system, allow sufficient time for the system to cool, as touching any part of a hot exhaust could cause burn injuries.

⚠ WARNING

Install the tail pack only in the positions described below. Installation of the tail pack in any other position on the motorcycle will affect the handling, stability or other aspects of the motorcycle's operation which may result in loss of motorcycle control and an accident.

⚠ WARNING

The motorcycle must not be fitted with more than one tail pack at the same time. Fitment of additional tail packs will adversely affect the handling, stability or other aspects of the motorcycle's operation which may result in loss of motorcycle control and an accident.

⚠ WARNING

Remove all straps from the motorcycle when operating the motorcycle with the tail pack removed. Operation of the motorcycle with the straps fitted, and the tail pack removed, may result in loss of motorcycle control and an accident.

⚠ WARNING

Remove the shoulder strap(s) from the tail pack before mounting to the motorcycle.

Operation of the motorcycle with the shoulder strap(s) fitted may result in loss of motorcycle control and an accident.

⚠ WARNING

Secure the carry handles in to the zipped compartments on either side of the tail pack before mounting to the motorcycle.

Operation of the motorcycle with the carry handles unsecured may result in loss of motorcycle control and an accident.

⚠ WARNING

Always make sure the tail pack straps are correctly tensioned before riding the motorcycle. Operation of the motorcycle with the tail pack loose may result in loss of motorcycle control and an accident.

⚠ WARNING

Always make sure any excess mounting strap is tied back around itself to prevent the strap becoming trapped in the motorcycle.

Operation of the motorcycle with any excess strap hanging loose may lead to the strap becoming entangled with the rider and/or the motorcycle and result in loss of motorcycle control and an accident.

⚠ WARNING

The tail pack must not be fitted in conjunction with a top box. Installation of the tail pack together with a top box will affect the handling, stability or other aspects of the motorcycle's operation which may result in loss of motorcycle control and an accident.

⚠ CAUTION

Always tie any excess mounting strap back around itself to prevent the strap touching the motorcycle exhaust or chafing against the motorcycle.

Operation of the motorcycle with any excess strap not secured may result in damage to the straps or the motorcycle.

⚠ CAUTION

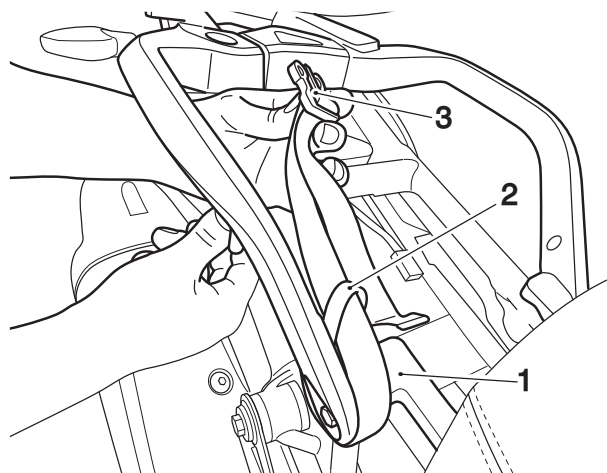
Remove all straps from the motorcycle when operating the motorcycle with the tail pack removed. Operation of the motorcycle with the straps fitted and the tail pack removed may result in damage to the straps or motorcycle.

NOTICE

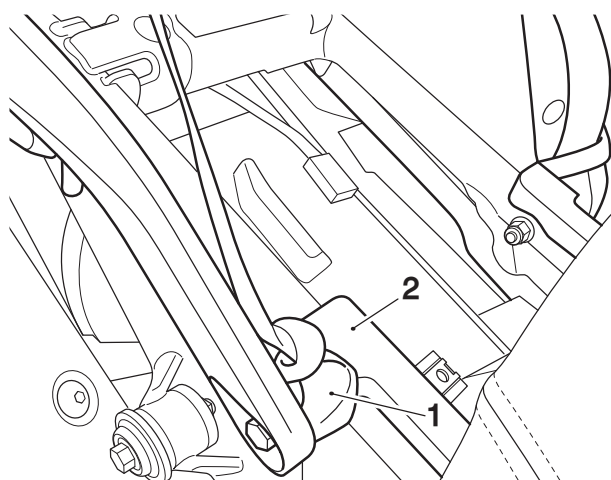
When using the tail pack, always pack heavier items at the bottom of the bag.

Installing the Tail Pack to the Rear Rack

1. Remove the passenger seat, as described in the Service Manual.
2. Collect the mounting straps from the kit.
3. Feed the loop section of a mounting strap around the right hand side rear rack front mounting and pass the clasp end of the strap through the loop section as shown.

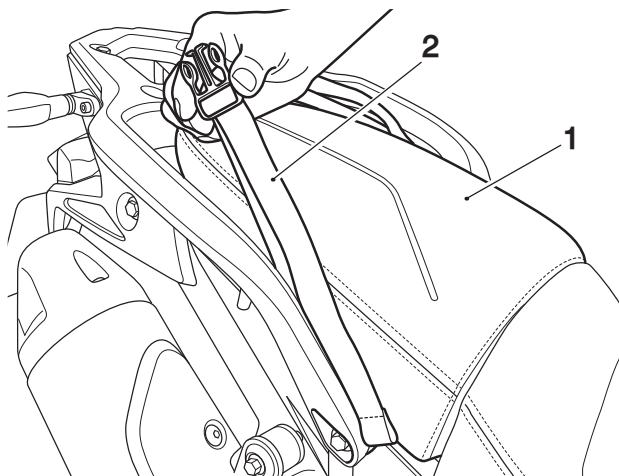


1. Rear rack front mounting, right hand side
2. Loop, mounting strap
3. Clasp, Mounting strap
4. Pull the clasp end of the strap to tighten the mounting strap on to the rear rack front mount.



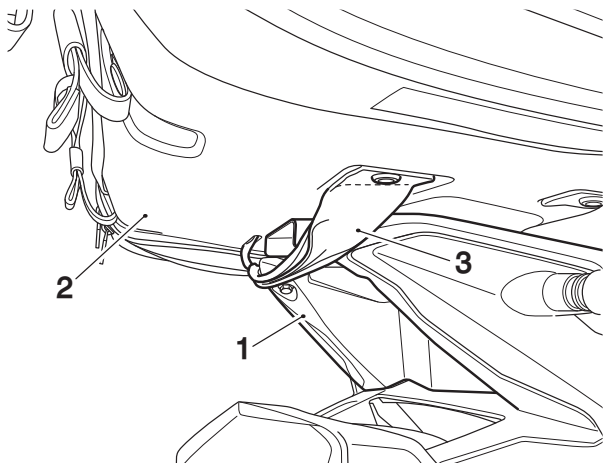
1. Mounting strap
2. Rear rack, front mounting
5. Repeat steps 3 and 4 for the left hand side of the motorcycle.

6. Refit the passenger seat as described in the Service Manual making sure the tail pack mounting straps are positioned outside of the seat as shown.



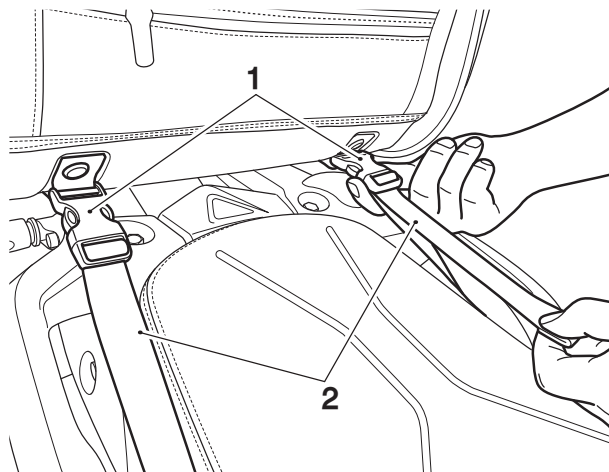
1. Passenger seat
2. Mounting strap, right hand side shown.

7. Slide the loop strap on the underside of the tail pack under the rear rack and position the tail pack on the rear rack.



1. Rear rack
2. Tail pack
3. Loop strap

8. Attach the right hand and left hand side mounting straps to the tail pack clasps and pull the mounting straps to secure the tail pack to the rear rack, as shown.



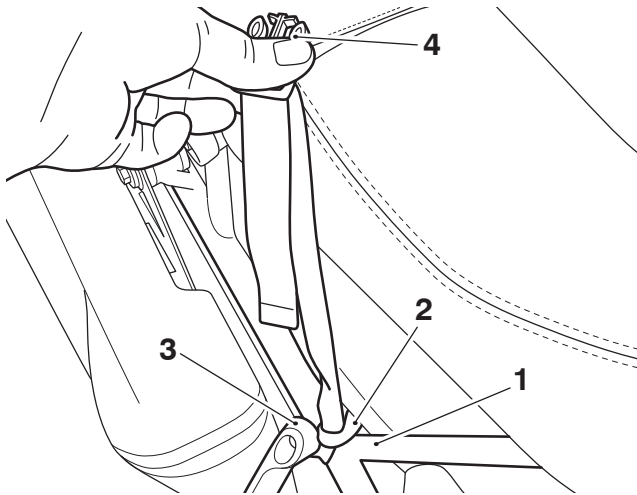
1. Tail pack clasps
2. Mounting straps

9. Check there is no significant side to side, or upwards movement of the tail pack. It should not be possible to lift the tail pack away from rear rack when the tail pack mounting straps are tensioned correctly. If necessary re-tension the mounting straps.
10. Securely tie any excess strap back around itself.
11. If riding the motorcycle without the tail pack, remove the seat, as described in the Service Manual, and remove the mounting straps.

Installing the Tail Pack to the Passenger Seat

1. Collect the mounting straps from the kit.

2. Feed the loop section of a mounting strap around the right hand side of the motorcycle frame, forward of the pillion footrest hanger, and pass the clasp end of the strap through the loop section as shown. Pull the mounting strap to tighten to the frame, the strap should not be able to slide up the frame.



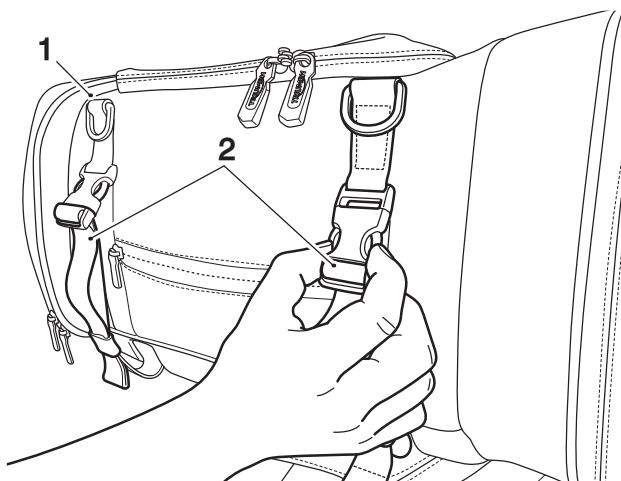
1. Motorcycle frame, right hand side
2. Loop, mounting strap
3. Clasp, Mounting strap

3. Repeat for the left hand side of the motorcycle.

NOTICE

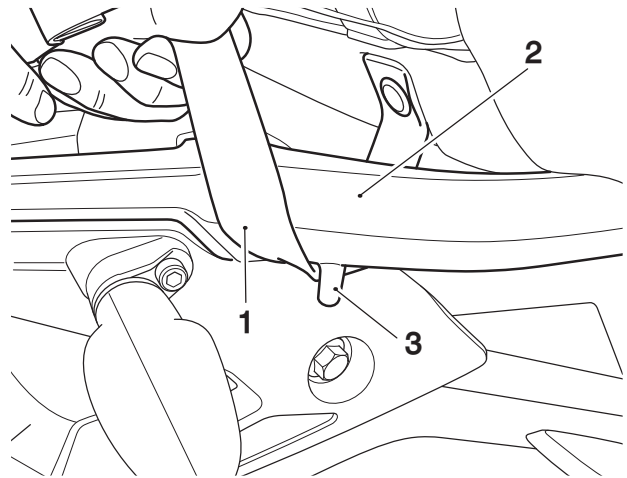
Make sure the underside of the tail pack is clean and dry prior to fitting.

4. Position the tail pack centrally on the passenger seat.
5. Release the rear straps on the tail pack.



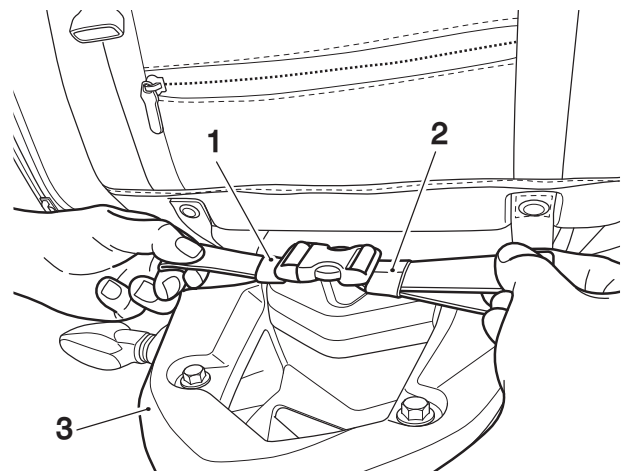
1. Tail pack
2. Rear straps

6. Feed the rear tail pack straps under the rear rack making sure the straps are positioned behind the lug on the underside of the rack, right hand side shown.



1. Tail pack strap, right hand side shown
2. Rear rack
3. Lug, rear rack

7. Bring the right hand and left hand side of the tail pack straps towards the centre of the rear rack and attach together. Pull the mounting straps to secure the tail pack to the rear rack, as shown.



1. Tail pack strap, left hand side
2. Tail pack strap, right hand side
3. Rear rack

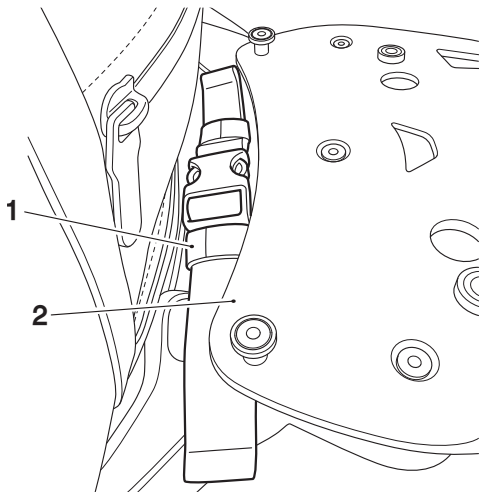
⚠ WARNING

Make sure the tail pack or its mounting straps do not interfere with the correct operation of the sliding carriage (if fitted).

Riding the motorcycle with the sliding carriage operation restricted may cause the motorcycle to become unstable leading to loss of control and an accident.

NOTICE

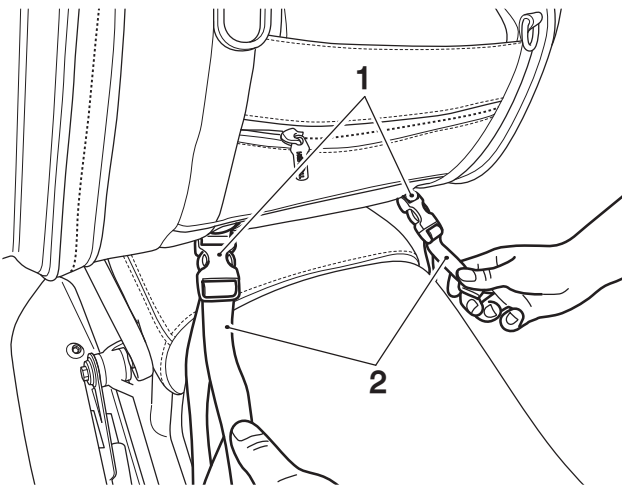
If a sliding carriage is fitted to the rear rack make sure the tail pack straps are positioned below the sliding carriage, as shown.



1. Tail pack straps

2. Sliding carriage

8. Attach the right hand and left hand side mounting straps to the tail pack clasps on the front of the tail pack and pull the mounting straps to secure the tail pack to the passenger seat, as shown.



1. Tail pack clasps

2. Mounting straps

⚠ WARNING

Tie any excess strap back around itself to prevent the strap becoming trapped in the motorcycle. Operation of the motorcycle with any excess strap not secured may result in damage to the straps or the motorcycle.

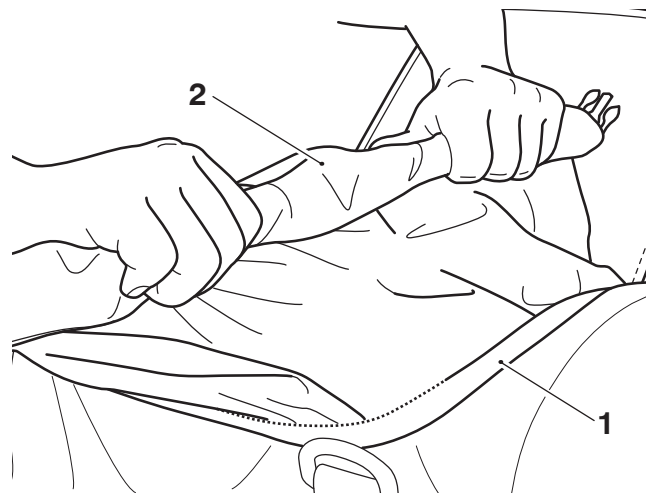
⚠ WARNING

Before riding the motorcycle always check the tail pack strap clasps are fully engaged. If all the clasps are not correctly engaged the tail pack could become detached from the motorcycle leading to loss of motorcycle control and an accident.

9. Check there is no significant side to side, or upwards movement of the tail pack. It should not be possible to lift the tail pack away from passenger seat when the tail pack mounting straps are tensioned correctly. If necessary retention the mounting straps.
10. Securely tie any excess strap back around itself.
11. If riding the motorcycle without the tail pack, remove the mounting straps.

Tail Pack Liner

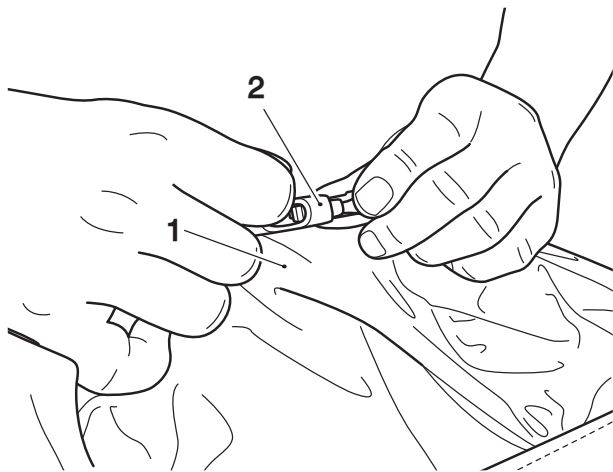
1. When contents have been placed in the tail pack, pull the top of the inner liner of the tail pack up. While holding the top of the liner closed fold it over repeatedly to take up any excess space.



1. Tail pack

2. Tail pack liner

2. Fold the rolled liner over towards the center of the tail pack and attach the clip and clasp on the sides of the liner to secure it in a closed condition.



1. Tail pack liner
2. Clip and clasp

Care of Tail Bag

NOTICE

Use of chemicals or high-pressure spray washers is not recommended for cleaning the bag. Using chemicals or pressure washers may damage the bag.

NOTICE

The bag is constructed from natural materials therefore scratches and scuffs will develop naturally, enhancing the appearance of the tank bag.

To maintain the appearance of your product, we recommend that you periodically clean the bag. Your Triumph bag is made from natural products and a lack of care can result in damage and permanent wear.

Frequent, regular cleaning is an essential part of the maintenance of your bag. If regularly cleaned, the appearance will be preserved for many years. Cleaning with cold water and a sponge is essential at all times but particularly so after exposure to sea breezes, sea water, dusty or muddy roads and in winter when roads are treated for ice and snow. A brush can be used to remove dirt or grit in extreme circumstances.

Do not use hot water or household detergent, as the use of such products will lead to premature deterioration.

Although, under the terms of your motorcycle warranty, cover is provided, the owner is expected to observe this reasonable advice which will safeguard against premature deterioration and enhance the appearance of the motorcycle.

Follow these simple instructions below to maintain the look of the bag:

- Do not use household cleaning products, bleach, detergents containing bleach or any kind of solvent to clean the bag; use a damp sponge only.
- Do not immerse the bag in water.
- Do not store items such as damp or wet clothing inside the bag as this can cause damage to the material or the stored items.
- Avoid direct heat from fires and radiators which can dry out and distort the bag.
- Avoid direct sunlight for extended periods which can dry out and discolour the material.
- Do not dry the bag by applying direct heat to them at any time.
- If the bag does get wet, absorb any excess water with a soft clean cloth then leave the product to dry naturally at room temperature.
- Avoid exposing the bag to high levels of salt, for example sea/salt water or road surfaces that have been treated during the winter for ice and snow.
- If exposure to salt is unavoidable, clean your bag immediately after each exposure using a damp sponge then leave the bag to dry naturally at room temperature.
- Allow mud to dry before wiping off. Use a soft cloth to remove the mud then leave the bag to dry naturally at room temperature.
- Gently clean any minor marks with a damp sponge then leave the bag to dry naturally at room temperature.
- Place the bag into a fabric bag or cardboard box to protect them when in storage. Do not put the bag into a plastic bag.

⚠ WARNING

The maximum safe load for the tail pack is 3 kg (6.6 lbs). Never exceed this loading limit as this may cause the motorcycle to become unstable leading to loss of control and an accident.

⚠ WARNING

After fitting the accessory kit the motorcycle will exhibit new handling characteristics.

Operate the motorcycle in a safe area free from traffic to gain familiarity with any new characteristics.

Operation of the motorcycle when not familiar with any new handling characteristics may lead to loss of motorcycle control which could result in serious injury or death.

⚠ WARNING

If, after fitting this accessory kit, you have any doubt about the performance of any aspect of the motorcycle, contact a competent person with the specialist knowledge and technical understanding of motorcycles, such as an authorised Triumph dealer.

Riding a motorcycle when there is any doubt as to any aspect of the performance of the motorcycle may lead to loss of motorcycle control which could result in serious injury or death.

⚠ WARNING

Never ride an accessory-equipped motorcycle at speeds above 80 mph (130 km/h).

Remember that the 80 mph (130 km/h) limit will be reduced by the fitting of non-approved accessories, incorrect loading, worn tyres, overall motorcycle condition and poor road or weather conditions.

The presence of accessories will cause changes in the stability and handling of the motorcycle. Failure to allow for changes in motorcycle stability may lead to loss of motorcycle control which could result in serious injury or death.

⚠ WARNING

High-speed operation should only be attempted by riders who have been instructed in the techniques necessary for high-speed riding and are familiar with the motorcycle's characteristics in all conditions.

Only operate this Triumph motorcycle at high speed in closed-course, on-road competition or on closed-course racetracks.

High-speed operation in any other circumstances is dangerous and may lead to loss of motorcycle control which could result in serious injury or death.

NOTICE

The motorcycle must not be operated above the legal road speed limit except in closed-course conditions.