



Accessory Fitting Instructions

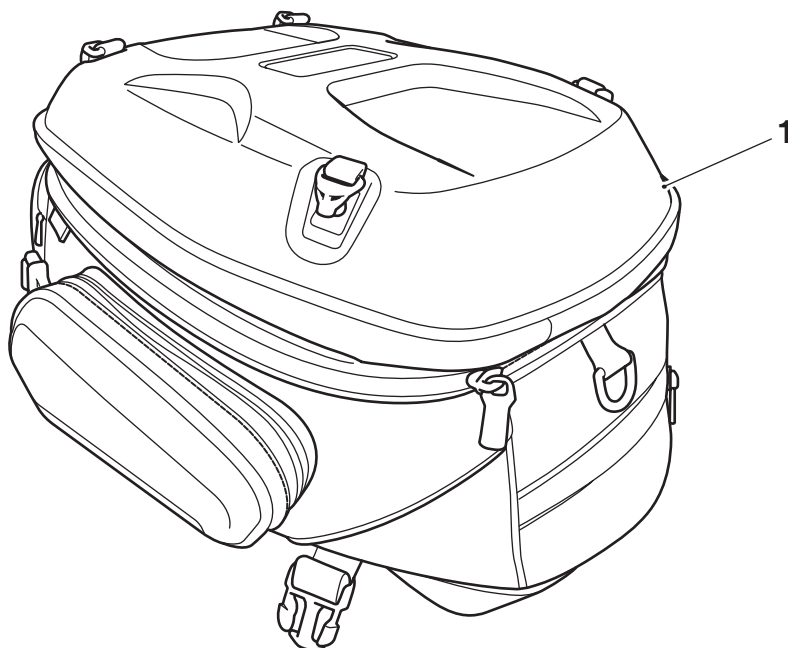
Tank Bag	
Kit number	Models Affected
A9510280	Tiger Explorer, Tiger Explorer XC, Explorer XR, Explorer XRx, Explorer XRt, Explorer XC, Explorer XCx, Explorer XCa
To be used with	
Harness Kit	
Kit number	Models Affected
A9510279	Tiger Explorer, Tiger Explorer XC, Explorer XR, Explorer XRx, Explorer XRt, Explorer XC, Explorer XCx, Explorer XCa

Thank you for choosing this Triumph genuine accessory kit. This accessory kit is the product of Triumph's use of proven engineering, exhaustive testing, and continuous striving for superior reliability, safety and performance.

Completely read all of these instructions before commencing the installation of the accessory kit in order to become thoroughly familiar with the kit's features and the installation process.

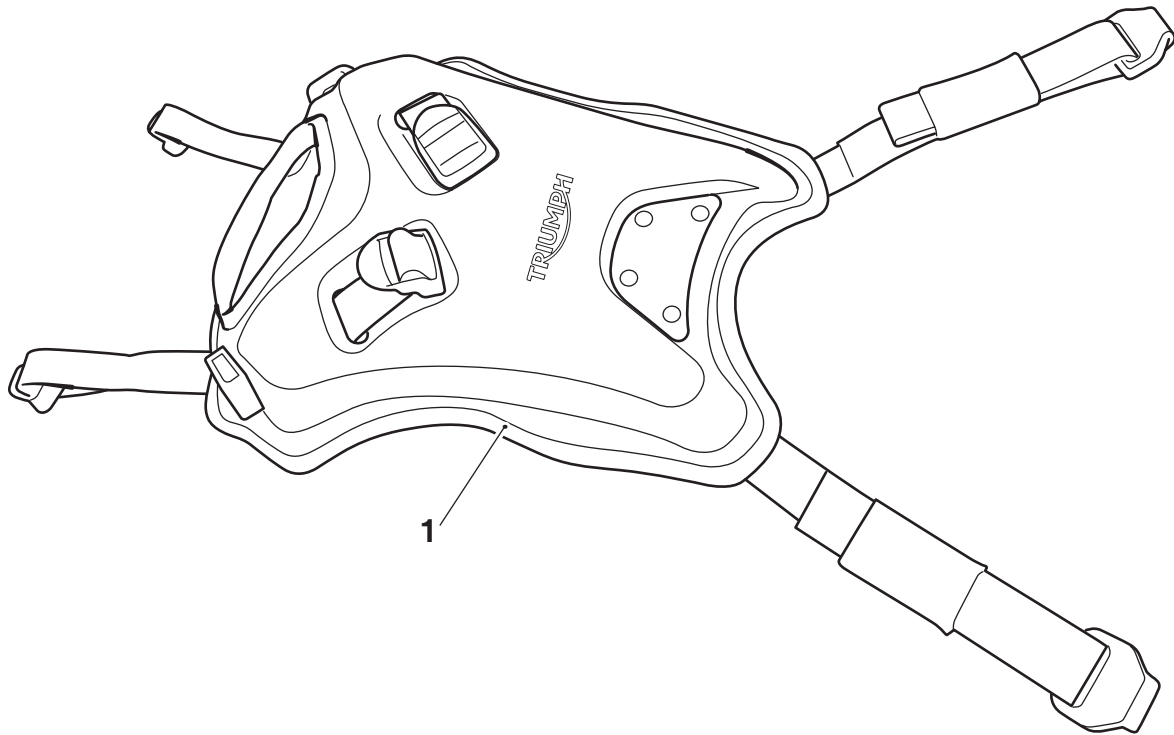
These instructions should be considered a permanent part of your accessory kit, and should remain with it even if your accessory equipped motorcycle is subsequently sold.

Parts supplied: A9510280



1. Tank Bag, 15 - 20 litres	1 off
-----------------------------	-------

Parts supplied: A9510279



1. Harness	1 off
------------	-------

Warning

The accessory kits covered in this instruction are designed for use on specific models of Triumph motorcycle. The accessory kits and the models applicable are listed at the start of the instruction. They should not be fitted to any other Triumph model or to any other manufacturer's motorcycle. Fitting an accessory kit to a Triumph model not listed, or to any other manufacturer's motorcycle will affect the performance, stability and handling of the motorcycle. This may affect the rider's ability to control the motorcycle and could cause an accident.

Warning

Always have Triumph approved parts, accessories and conversions fitted by a trained technician of an authorised Triumph dealer. The fitment of parts, accessories and conversions by a technician who is not of an authorised Triumph dealer may affect the handling, stability or other aspects of the motorcycle's operation which may result in loss of motorcycle control and an accident.

Warning

Throughout this operation, ensure that the motorcycle is stabilised and adequately supported to prevent risk of injury from the motorcycle falling.

Warning

A torque wrench of known accurate calibration must be used when fitting this accessory kit. Failure to tighten any of the fasteners to the correct torque specification may affect motorcycle performance, handling and stability. This may result in loss of motorcycle control and an accident.

Warning

Install the tank bag only in the positions described below. Installation of the tank bag in any other position on the motorcycle will affect the handling, stability or other aspects of the motorcycle's operation, which may result in loss of motorcycle control and an accident.

Note:

- Triumph offers a broad range of approved genuine accessories for your motorcycle. We cannot therefore cover all possible equipment variations in these instructions. For removal and installation of Triumph Genuine Accessories, always refer to the instructions supplied with the respective accessory kit. To obtain additional copies of any Triumph accessory instructions, visit www.triumphinstructions.com or contact your authorised Triumph dealer.

Note:

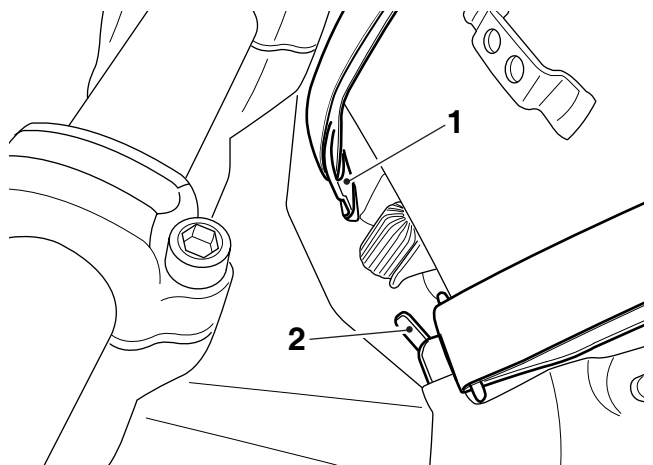
- The harness kit A9510279 must be used with tank bag kit A9510280 (15 to 20 litre)

Harness Installation

Caution

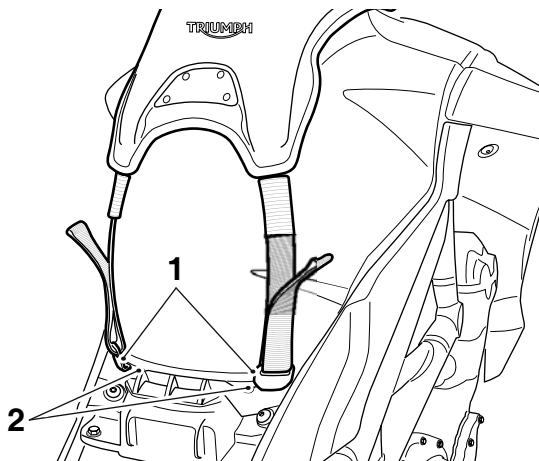
Ensure both the underside of the harness and the fuel tank are clean and dry prior to fitting the tank bag. Dirt or dust trapped between the fuel tank and the harness will result in damage to the paintwork and harness.

- Remove the rider's seat as described in the owners handbook.
- Disconnect the battery, negative (black) lead first.
- Remove the front auxiliary socket panel and electrical connector, as described in the service manual.
- Position the harness to the fuel tank, aligning the fuel filler opening so it is concentric to the fuel filler cap.
- Fit the two front hooks into the slot provided in the frame brace.



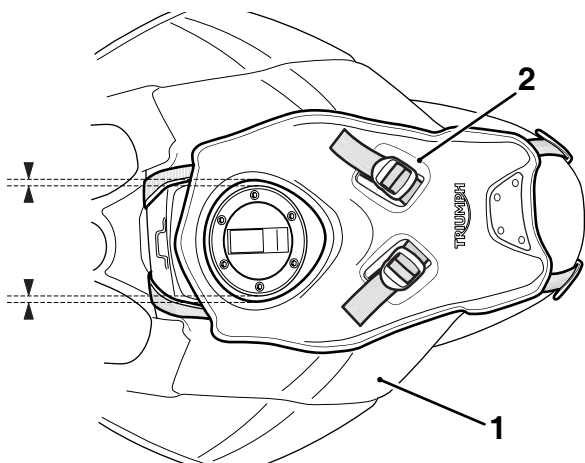
- Hook
- Slot

- Fit the rear hooks to the cut out provided in the fuel tank flange.



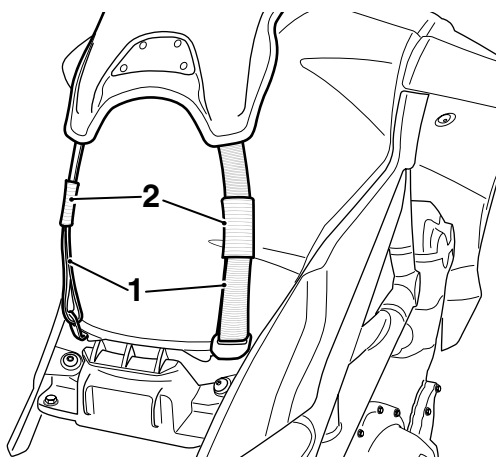
- Rear hook
- Cut out

- Position the harness to the fuel tank in the position shown below.



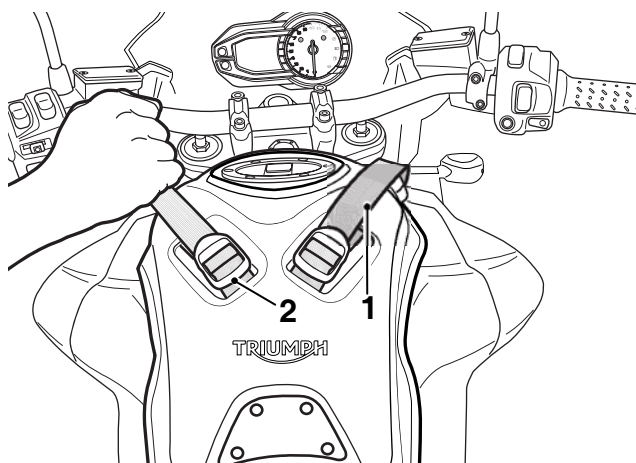
- Fuel tank
- Harness

- Tighten the velcro straps and place the elastic cover over the end as shown below.



- Velcro strap
- Elastic cover

- Fully tension the front straps making sure the harness is concentric to the fuel filler and no sideways movement is possible.

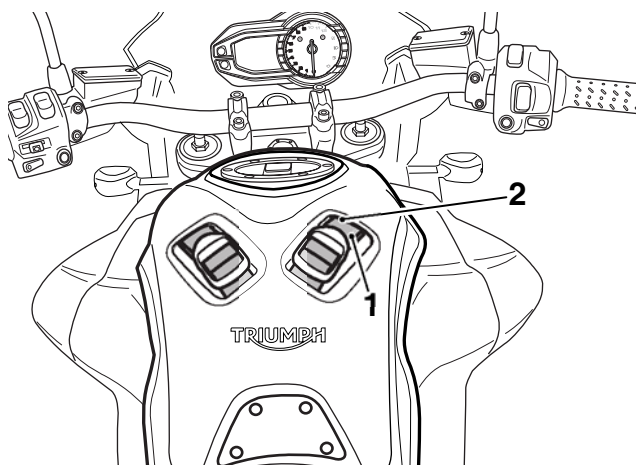


- Front strap
- Tensioning buckle

! Caution

Incorrect tensioning of the tank bag harness will result in damage to the fuel tank or harness.

- Place the excess length from the front straps into the slots on the harness.



- Harness slots
- Strap

Note:

- There must be no sideways movement of the harness after tensioning.

- Check that the fuel filler cap opens without obstruction.
- If the fuel filler opening is not in the correct position when the straps have been tensioned, loosen the four straps and adjust as required.
- Refit the front auxiliary socket electrical connector and panel as described in the service manual.
- Reconnect the battery (red lead first).

15. Refit the rider's seat as described in the owners manual.

Warning

Ensure the harness does not restrict the movement of the steering or cause any cables or wiring harnesses to bind.

Move the handlebars to left and right full lock while checking that cables and wiring harnesses do not bind. A cable or harness which binds will restrict the steering. Any restriction of the steering may cause loss of control and an accident.

Warning

Always ensure the harness is correctly tensioned before riding the motorcycle. Operation of the motorcycle with the harness loose may result in loss of motorcycle control and an accident.

Tank Bag Installation

Warning

Remove all shoulder straps from the tank bag before mounting the tank bag to the motorcycle. Operation of the motorcycle with the shoulder straps fitted may result in loss of motorcycle control and an accident.

Warning

Always ensure the fuel filler cap lock cover is closed before fitment of the tank bag to the harness. Fitment of the tank bag with the lock cover open may prevent correct attachment of the tank bag rear magnet to the steel plate on the harness, resulting in loss of motorcycle control and an accident.

Caution

Always ensure the fuel filler cap lock cover is closed before fitment of the tank bag to the harness. Fitment of the tank bag with the lock cover open may result in permanent damage to the tank bag or fuel filler cap.

Caution

Always remove the tank bag prior to refuelling. Opening the fuel filler cap with the tank bag attached to the harness will damage the harness or tank bag.

Caution

Ensure both the underside of the tank bag and the upper surface of the harness are clean and dry prior to fitting the tank bag. Dirt or dust trapped between the tank bag and the harness will result in damage to both items.

Note:

- **When using the tank bag, always pack heavier items at the bottom of the bag.**

1. Position the tank bag to the harness and attach the clips on the tank bag to the clips on the harness.
2. Attach the rear magnetic flap to the steel plate on the harness. Ensure the magnetic fixing is securely attached to the steel surface on the harness.
3. Evenly tension the straps on the left and right hand side of the tank bag until it is tight against the harness.

Note:

- **There must be no sideways movement of the tank bag after tensioning.**

Cleaning

Caution

Use of chemicals or high-pressure spray washers is not recommended for cleaning the tank bag or harness. Using chemicals or pressure washers may damage the tank bag or harness.

To help maintain their appearance, clean the tank bag and harness using a sponge or cleaning cloth with low alkaline soap and water.



Warning

Ensure the tank bag does not restrict the movement of the steering or cause any cables or wiring harnesses to bind.

Move the handlebars to the left and right full lock while checking that cables and wiring harnesses do not bind. A cable or harness which binds will restrict the steering. Any restriction of the steering may cause loss of control and an accident.



Warning

The maximum safe load for the tank bag is 5 kg (11 lbs). Never exceed this loading limit as this may cause the motorcycle to become unstable leading to loss of control and an accident.



Warning

After fitting the accessory kit the motorcycle will exhibit new handling characteristics. Operate the motorcycle in a safe area free from traffic to gain familiarity with any new characteristics. Operation of the motorcycle when not familiar with any new handling characteristics may result in loss of motorcycle control and an accident.



Warning

Never ride an accessory-equipped motorcycle (including those fitted with Triumph approved windscreens and luggage systems) at speeds above 80 mph (130 km/h).

The presence of accessories such as windscreens and luggage systems will cause changes in the stability and handling of the motorcycle. Failure to allow for changes in motorcycle stability may lead to loss of control or an accident.

Remember that the 80 mph (130 km/h) limit will be reduced by the fitting of non-approved accessories, incorrect loading, worn tyres, overall motorcycle condition and poor road or weather conditions.



Warning

This motorcycle must not be operated above the legal road speed limit except in authorised closed-course conditions.



Warning

Only operate this Triumph motorcycle at high speed in closed-course on road competition or on closed-course racetracks. High-speed operation should only be attempted by riders who have been instructed in the techniques necessary for high-speed riding and are familiar with the motorcycle's characteristics in all conditions.

High-speed operation in any other circumstances is dangerous and will lead to loss of motorcycle control and an accident.



Warning

The strong magnet used to retain the tank bag to the harness may adversely affect a variety of electronic devices and electronic storage units such as (but not limited to): electronic medical devices, mobile phones, personal data assistants (PDAs), lap top computers, floppy discs and other computer storage media, personal music players, digital cameras, memory cards, music/video cassettes etc.

Ensure that if carrying any of these items, they are stored as far away from the magnets as possible. It is recommended that any such items are carried elsewhere on the motorcycle or in the map pocket under the lid.

Carriage of any such items is entirely at your own risk.