

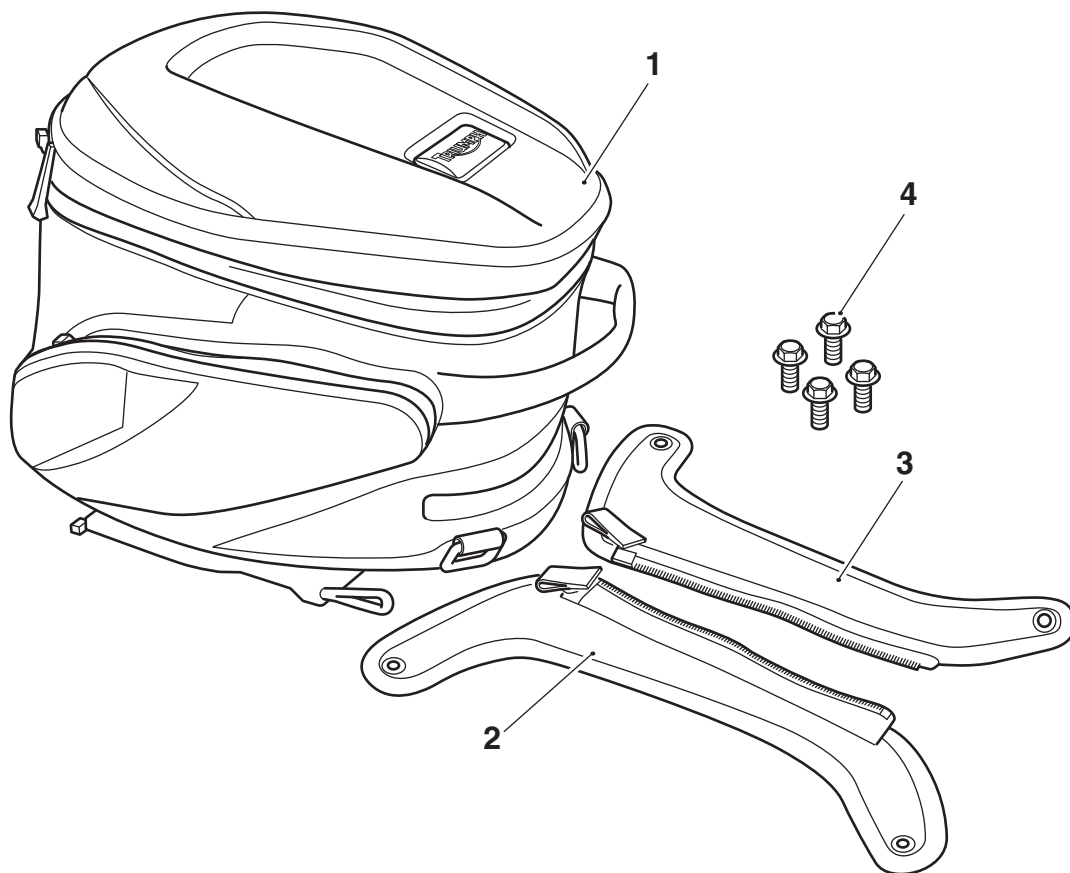
## English

### Fitting Instructions: Tiger Sport A9518077, A9510269

Thank you for choosing this Triumph genuine accessory kit. This accessory kit is the product of Triumph's use of proven engineering, exhaustive testing, and continuous striving for superior reliability, safety and performance.

Completely read all of these instructions before commencing the installation of the accessory kit in order to become thoroughly familiar with the kit's features and the installation process.

These instructions should be considered a permanent part of your accessory kit, and should remain with it even if your accessory-equipped motorcycle is subsequently sold.



### Parts Supplied:

|                              |       |                           |       |
|------------------------------|-------|---------------------------|-------|
| 1. Tail pack, 16 - 20 litres | 1 off | 3. Side mount, right hand | 1 off |
| 2. Side mount, left hand     | 1 off | 4. Bolt, M6 x 12 mm       | 4 off |



### Warning

This accessory kit is designed for use on Triumph Tiger Sport motorcycles only and should not be fitted to any other Triumph model or to any other manufacturer's motorcycle. Fitting this accessory kit to any other Triumph model, or to any other manufacturer's motorcycle will affect the performance, stability and handling of the motorcycle. This may affect the rider's ability to control the motorcycle and could cause an accident.



### Warning

Always have Triumph approved parts, accessories and conversions fitted by a trained technician of an authorised Triumph dealer. The fitment of parts, accessories and conversions by a technician who is not of an authorised Triumph dealer may affect the handling, stability or other aspects of the motorcycle's operation, which may result in loss of motorcycle control and an accident.



### Warning

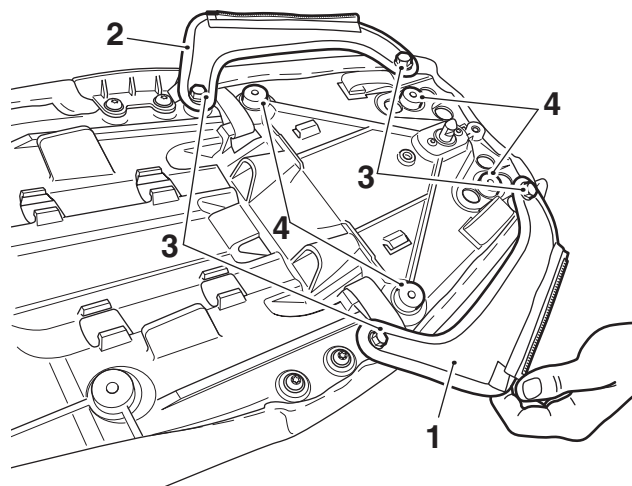
Throughout this operation, ensure that the motorcycle is stabilised and adequately supported to prevent risk of injury from the motorcycle falling.



### Warning

A torque wrench of known accurate calibration must be used when fitting this accessory kit. Failure to tighten any of the fasteners to the correct torque specification may result in loss of motorcycle control and an accident.

1. Remove the seat, as described in the Owner's Handbook.
2. Locate the left and right hand side mounts to the under side of the seat and retain with the M6 x 12 mm bolts from the kit. Ensure that the side mounts are around, not over, the seat's rubber grommets as shown below. Tighten the bolts to **3 Nm**.



1. Right hand side mount
2. Left hand side mount
3. M6 x 12 mm bolt
4. Grommet

3. Refit the seat, as described in the Owner's Handbook.

## Installing the Tail Pack



### Warning

Remove all shoulder straps from the tail pack before mounting it to the motorcycle. Operation of the motorcycle with the shoulder straps fitted may result in loss of motorcycle control and an accident.



### Caution

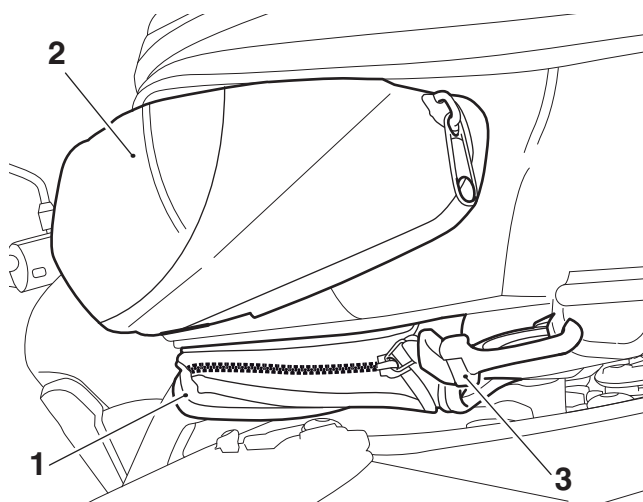
Use of chemicals is not recommended for cleaning any Triumph accessory luggage bags. Using chemicals may damage the luggage bags. Use a sponge or cleaning cloth with soap and water.



### Caution

Ensure that the seat and the underside of the tail pack is clean and dry prior to fitting the tail pack. Fitting a tail pack without cleaning it or the seat may damage the seat cover.

1. Clean the seat and the underside of the tail pack using a sponge or cleaning cloth with soap and water.
2. Position the tail pack on the seat and retain to the side mounts with the zips. Always ensure the zips are clipped onto the tail pack, as shown below.



1. Side mount, left hand side shown
2. Tail pack
3. Clip



### Warning

The maximum safe load for the tail pack is 3 kg (6.6 lbs). Never exceed this loading limit as this may cause the motorcycle to become unstable leading to loss of control and an accident.



### Warning

After fitting the accessory kit the motorcycle will exhibit new handling characteristics. Operate the motorcycle in a safe area free from traffic to gain familiarity with any new characteristics. Operation of the motorcycle when not familiar with any new handling characteristics may result in loss of motorcycle control and an accident.



### Warning

If, after fitment of this accessory kit, you have any doubt about the performance of any aspect of the motorcycle, contact an authorised Triumph dealer and do not ride the motorcycle until the authorised dealer has declared it fit for use. Riding a motorcycle when there is any doubt as to any aspect of the performance of the motorcycle may result in loss of control of the motorcycle, leading to an accident.



### Warning

Never ride an accessory-equipped motorcycle at speeds above 80 mph (130 km/h).

The presence of accessories will cause changes in the stability and handling of the motorcycle. Failure to allow for changes in motorcycle stability may lead to loss of control or an accident.

Remember that the 80 mph (130 km/h) limit will be reduced by the fitting of non-approved accessories, incorrect loading, worn tyres, overall motorcycle condition and poor road or weather conditions.



### Warning

The motorcycle must not be operated above the legal road speed limit except in closed course conditions.



### Warning

Only operate this Triumph motorcycle at high speed in closed course, on-road competitions or on closed course race tracks. High speed operation should only be attempted by riders who have been instructed in the techniques necessary for high speed riding and are familiar with the motorcycle's characteristics in all conditions. High speed operation in any other circumstances is dangerous and will lead to loss of motorcycle control and an accident.