



Accessory Fitting Instructions

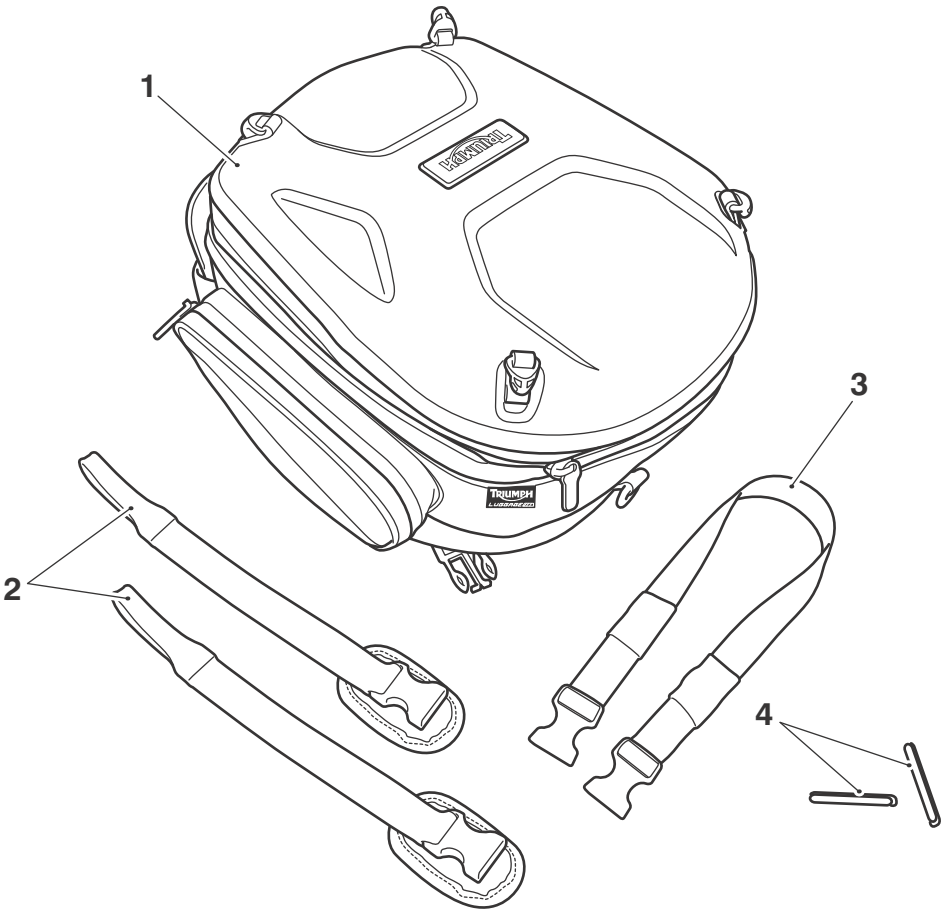
Adventure Tank Bag Kit	
Kit number	Models Affected
A9510169	Tiger XR, Tiger XR _T , Tiger XR _x , Tiger XC, Tiger XC _A , Tiger XC _x
	Tiger 800, Tiger 800 ABS, Tiger 800XC, Tiger 800XC ABS

Thank you for choosing this Triumph genuine accessory kit. This accessory kit is the product of Triumph's use of proven engineering, exhaustive testing, and continuous striving for superior reliability, safety and performance.

Completely read all of these instructions before commencing the installation of the accessory kit in order to become thoroughly familiar with the kit's features and the installation process.

These instructions should be considered a permanent part of your accessory kit, and should remain with it even if your accessory equipped motorcycle is subsequently sold.

Parts supplied



1. Tank bag, 16 to 20 litre	1 off	3. Strap (rear)	1 off
2. Strap (front)	2 off	4. Rubber strip	2 off



Warning

This accessory kit is designed for use on Triumph Tiger 800, Tiger 800 ABS, Tiger 800XC, Tiger 800XC ABS, Tiger XR, Tiger XR_T, Tiger XR_x, Tiger XC, Tiger XC_A and Tiger XC_x motorcycles only and should not be fitted to any other Triumph model or to any other manufacturer's motorcycle. Fitting this accessory kit to any other Triumph model or to any other manufacturer's motorcycle will affect the performance, stability and handling of the motorcycle. This may affect the rider's ability to control the motorcycle and could cause an accident.



Warning

Always have Triumph approved parts, accessories and conversions fitted by a trained technician of an authorised Triumph dealer. The fitment of parts, accessories and conversions by a technician who is not of an authorised Triumph dealer may affect the handling, stability or other aspects of the motorcycle's operation, which may result in loss of motorcycle control and an accident.



Warning

Throughout this operation, ensure that the motorcycle is stabilised and adequately supported to prevent risk of injury from the motorcycle falling.



Warning

A torque wrench of known accurate calibration must be used when fitting this accessory kit. Failure to tighten any of the fasteners to the correct torque specification may affect motorcycle performance, handling and stability. This may result in loss of motorcycle control and an accident.

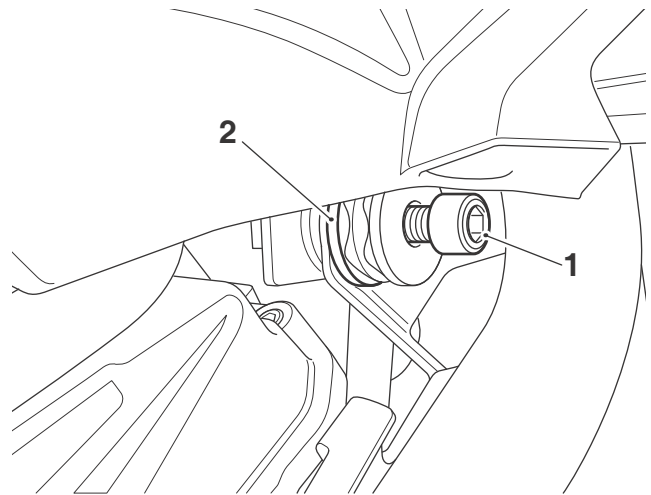
Strap Installation



Warning

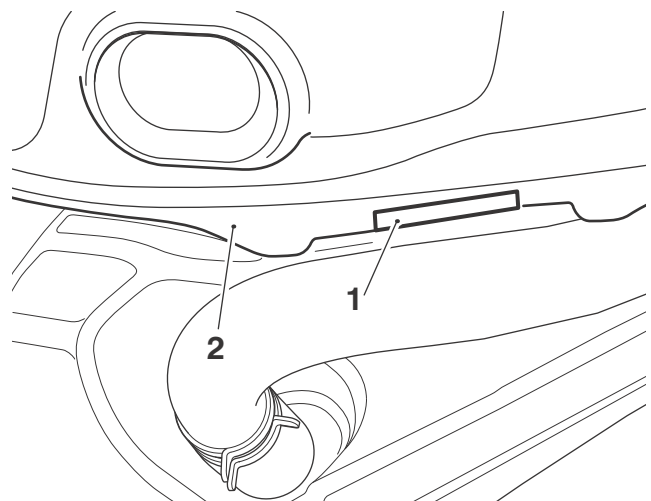
Always ensure the tank bag straps are correctly tensioned before riding the motorcycle. Operation of the motorcycle with the tank bag loose may result in loss of motorcycle control and an accident.

1. Remove the rider's seat as described in the Service Manual.
2. Disconnect the battery, negative (black) lead first.
3. Remove the fuel tank infill panels, as described in the Service Manual.
4. Loosen but do not fully remove both rear fuel tank bracket fixings.



1. Fixing (right hand shown)
2. Fuel tank bracket

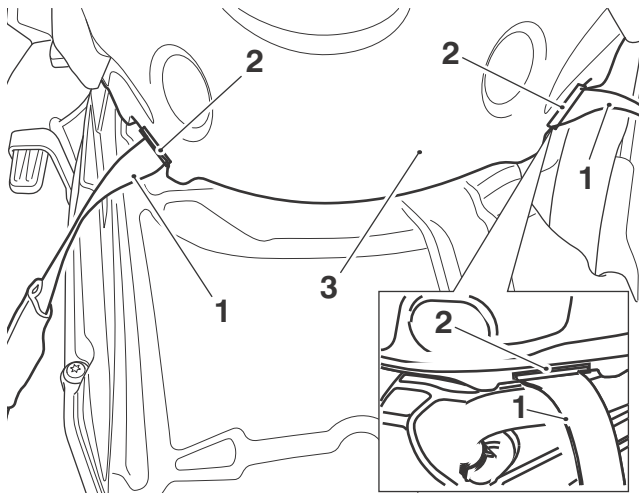
5. Position the protective rubber strips from the kit to the lower edge of the fuel tank, as shown below.



1. Rubber strip
2. Fuel tank

Note:

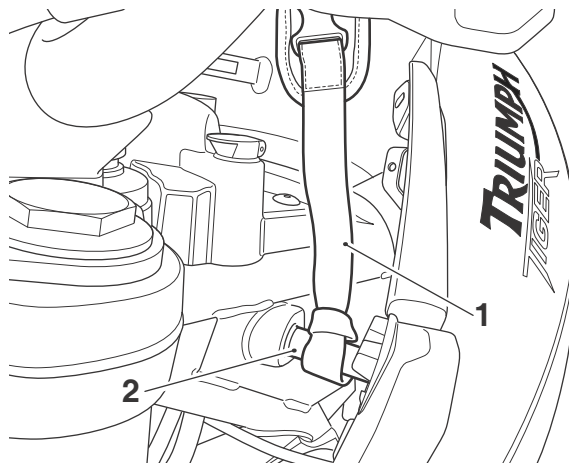
- **When positioning the rear strap ensure the strap is not twisted and the buckles are facing away from the fuel tank.**
6. Raise the rear of the fuel tank and position the rear strap from the kit to the protective strips, as shown below.



1. Rear strap
2. Protective strips
3. Fuel tank

7. Tighten both rear fuel tank fixings to **12 Nm**.
8. Refit the fuel tank infill panels, tightening the fixings to **3 Nm**.
9. Remove the front auxiliary socket panel, as described in the Service Manual.

10. Position the front straps to the fuel tank bracket in the orientation shown below.



1. Front strap
2. Fuel tank bracket to frame (left hand shown)

11. Refit the front auxiliary socket panel, tighten the fixings to **3 Nm**.
12. Reconnect the battery, positive (red) lead first.
13. Refit the rider's seat as described in the Service Manual.



Caution

Remove the rear strap from the motorcycle when operating the motorcycle with the tank bag removed. Operation of the motorcycle with the strap fitted, and the tank bag removed, may result in damage to the strap or motorcycle.

Tank Bag Installation



Warning

Install the tank bag only in the position described below. Installation of the tank bag in any other position on the motorcycle will affect the handling, stability or other aspects of the motorcycle's operation which may result in loss of motorcycle control and an accident.



Warning

Remove all shoulder straps from the tank bag before mounting the tank bag to the motorcycle. Operation of the motorcycle with the shoulder straps fitted may result in loss of motorcycle control and an accident.



Warning

Always ensure the fuel filler cap lock cover is closed before fitment of the tank bag. Fitment of the tank bag with the lock cover open may prevent correct attachment of the tank bag, resulting in loss of motorcycle control and an accident.



Caution

Always ensure the fuel filler cap lock cover is closed before fitment of the tank bag. Fitment of the tank bag with the lock cover open may result in permanent damage to the tank bag or fuel filler cap.



Caution

Always fully remove the tank bag prior to refuelling. Opening the fuel filler cap without the tank bag fully removed will damage the tank bag.



Caution

Ensure both the underside of the tank bag and the upper surface of the fuel tank are clean and dry prior to fitting the tank bag. Dirt or dust trapped between the tank bag and the fuel tank will result in damage to both items.

Note:

- When using the tank bag, always pack heavier items at the bottom of the bag.

1. Position the tank bag to the fuel tank and attach the front clips of the tank bag to the front straps.
2. Attach the clips on the rear of the tank bag to the rear strap.



Caution

Incorrect tensioning of the tank bag strap will result in damage to the fuel tank.

Note:

- There must be no sideways movement of the tank bag after tensioning.
 - The tank bag will be pulled rearwards during the tensioning process.
3. Evenly tension the rear strap on the left and right hand side of the tank bag until it is tight against the fuel tank.
 4. Slide the remaining strap into the elasticated sleeves.

Cleaning



Caution

Use of chemicals or high-pressure spray washers is not recommended for cleaning the tank bag and straps. Using chemicals or pressure washers may damage the tank bag.

To help maintain their appearance, clean the tank bag and straps using a sponge or cleaning cloth with low alkaline soap and water.



Warning

Remove the rear strap from the motorcycle when operating the motorcycle with the tank bag removed. Operation of the motorcycle with the strap fitted, and the tank bag removed, may result in loss of motorcycle control and an accident.



Warning

Ensure the tank bag does not restrict the movement of the steering or cause any cables or wiring harnesses to bind.

Move the handlebars to the left and right full lock while checking that cables and wiring harnesses do not bind. A cable or harness which binds will restrict the steering. Any restriction of the steering may cause loss of control and an accident.



Warning

The maximum safe load for the tank bag is 3 kg (6.5 lbs). Never exceed this loading limit as this may cause the motorcycle to become unstable leading to loss of control and an accident.



Warning

After fitting the accessory kit the motorcycle will exhibit new handling characteristics. Operate the motorcycle in a safe area free from traffic to gain familiarity with any new characteristics. Operation of the motorcycle when not familiar with any new handling characteristics may result in loss of motorcycle control and an accident.



Warning

Never ride an accessory-equipped motorcycle (including those fitted with Triumph approved windscreens and luggage systems) at speeds above 80 mph (130 km/h).

The presence of accessories such as windscreens and luggage systems will cause changes in the stability and handling of the motorcycle. Failure to allow for changes in motorcycle stability may lead to loss of control or an accident.

Remember that the 80 mph (130 km/h) limit will be reduced by the fitting of non-approved accessories, incorrect loading, worn tyres, overall motorcycle condition and poor road or weather conditions.



Warning

This motorcycle must not be operated above the legal road speed limit except in authorised closed-course conditions.



Warning

Only operate this Triumph motorcycle at high speed in closed-course, on-road competition or on closed-course racetracks. High-speed operation should only be attempted by riders who have been instructed in the techniques necessary for high-speed riding and are familiar with the motorcycle's characteristics in all conditions.

High-speed operation in any other circumstances is dangerous and will lead to loss of motorcycle control and an accident.