



Accessory Fitting Instructions

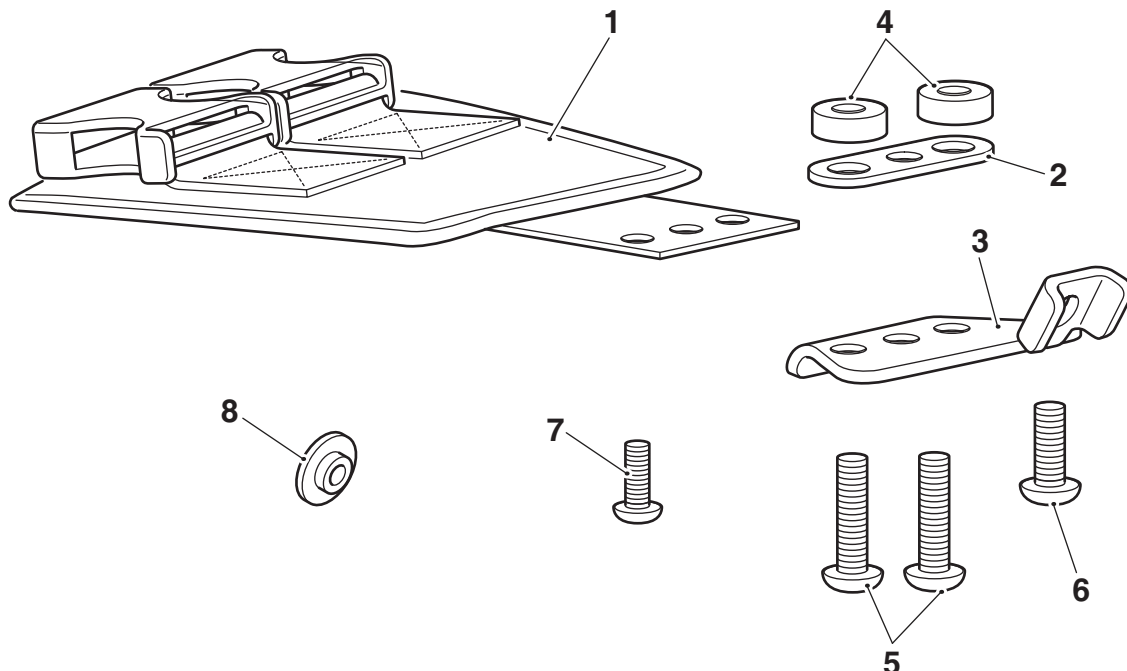
Front Mounting Harness Kit	
Kit number	Models Affected
A9510165	Speed Triple S and Speed Triple R
To be used with	
Tank Bag	
Kit number	Models Affected
A9510248	Speed Triple S and Speed Triple R

Thank you for choosing this Triumph genuine accessory kit. This accessory kit is the product of Triumph's use of proven engineering, exhaustive testing, and continuous striving for superior reliability, safety and performance.

Completely read all of these instructions before commencing the installation of the accessory kit in order to become thoroughly familiar with the kit's features and the installation process.

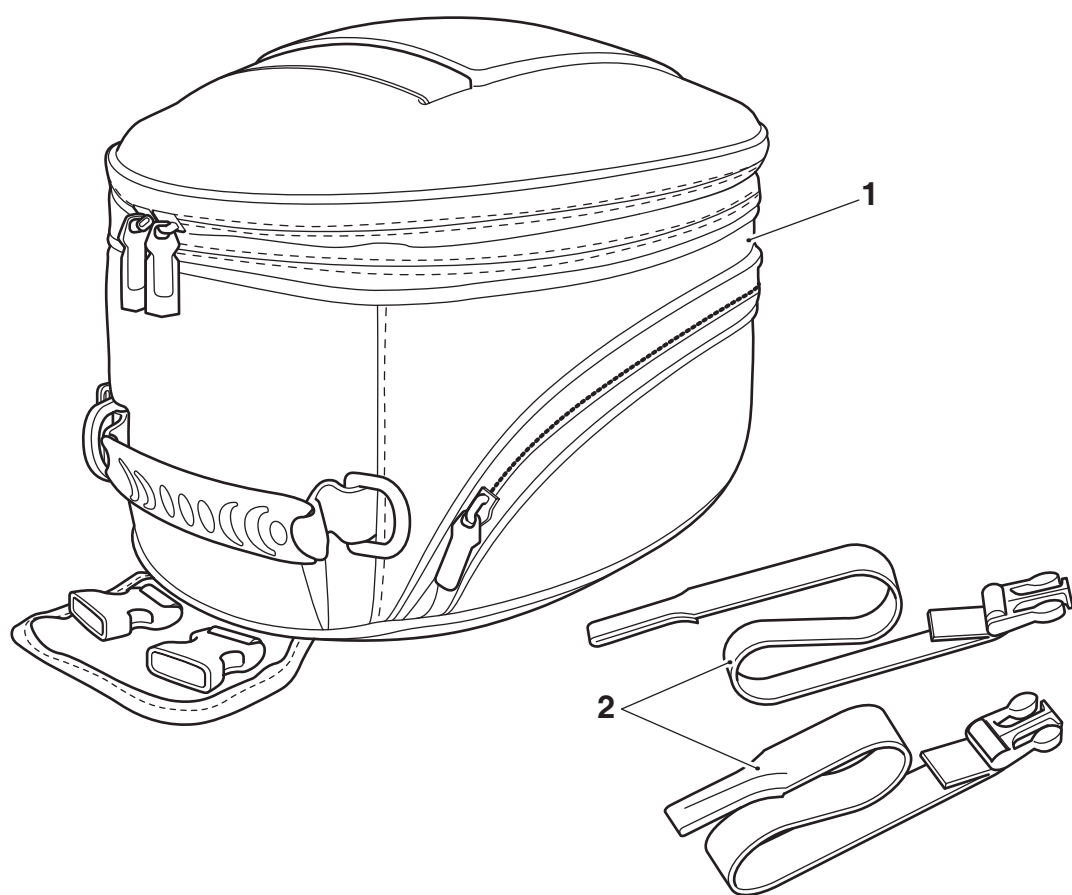
These instructions should be considered a permanent part of your accessory kit, and should remain with it even if your accessory equipped motorcycle is subsequently sold.

Parts supplied: A9510165



1. Front harness	1 off	5. Screw, M6 x 30 mm	2 off
2. Clamp, lower	1 off	6. Screw, M6 x 16 mm	1 off
3. Clamp, upper	1 off	7. Screw, M5 x 16 mm	1 off
4. Spacer	2 off	8. Compression limiter	1 off

Parts supplied: A9510248



1. Tank Bag, 15 - 20 litres	1 off	2. Rear mounting strap	2 off
-----------------------------	-------	------------------------	-------



Warning

The accessory kits covered in this instruction are designed for use on specific models of Triumph motorcycle. The accessory kits and the models applicable are listed at the start of the instruction. They should not be fitted to any other Triumph model or to any other manufacturer's motorcycle. Fitting an accessory kit to a Triumph model not listed, or to any other manufacturer's motorcycle will affect the performance, stability and handling of the motorcycle. This may affect the rider's ability to control the motorcycle and could cause an accident.



Warning

Always have Triumph approved parts, accessories and conversions fitted by a trained technician of an authorised Triumph dealer. The fitment of parts, accessories and conversions by a technician who is not of an authorised Triumph dealer may affect the handling, stability or other aspects of the motorcycle's operation which may result in loss of motorcycle control and an accident.



Warning

Throughout this operation, ensure that the motorcycle is stabilised and adequately supported to prevent risk of injury from the motorcycle falling.



Warning

A torque wrench of known accurate calibration must be used when fitting this accessory kit. Failure to tighten any of the fasteners to the correct torque specification may affect motorcycle performance, handling and stability. This may result in loss of motorcycle control and an accident.



Warning

Install the tank bag only in the positions described below. Installation of the tank bag in any other position on the motorcycle will affect the handling, stability or other aspects of the motorcycle's operation, which may result in loss of motorcycle control and an accident.



Warning

Remove the shoulder strap(s) from the tank bag before mounting to the motorcycle.

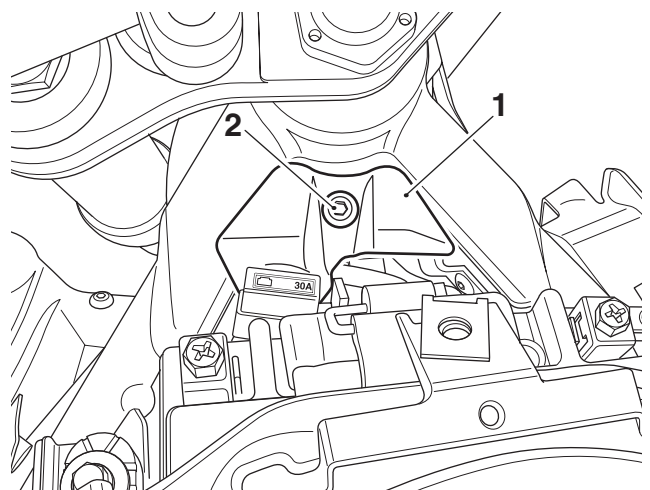
Operation of the motorcycle with the shoulder strap(s) fitted may result in loss of motorcycle control and an accident.

Note:

- Triumph offers a broad range of approved genuine accessories for your motorcycle. We cannot therefore cover all possible equipment variations in these instructions. For removal and installation of Triumph Genuine Accessories, always refer to the instructions supplied with the respective accessory kit. To obtain additional copies of any Triumph accessory instructions, visit www.triumphinstructions.com or contact your authorised Triumph dealer.

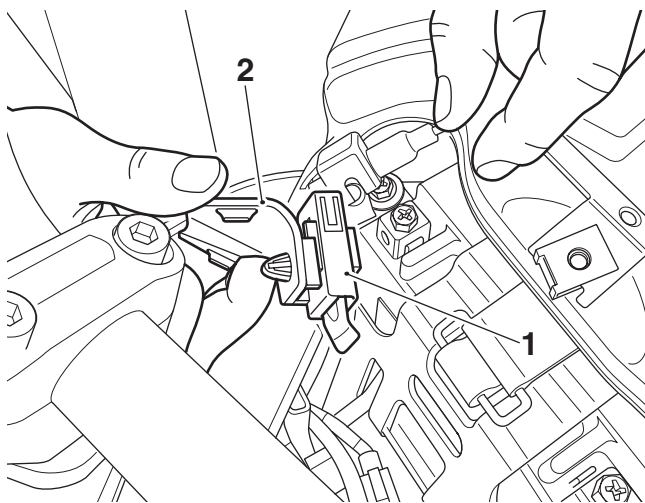
Installing the Tank Bag Front Mount

- Remove the front panel from the fuel tank, as described in the Service Manual. Retain the two outer fixings and torque limiter for reuse. Retain the centre fixing if the motorcycle is to be returned to its original condition.
- Disconnect the battery, negative (black) lead first.
- Remove the seat, as described in the Service Manual.
- Release the fixing and detach the headstock infill panel from the frame. Retain the fixing if the motorcycle is to be returned to its original condition.



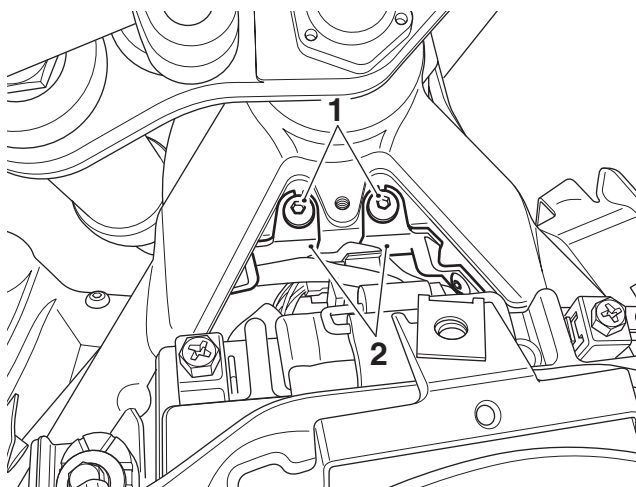
1. Infill panel
2. Fixing

5. Detach the main fuse from the infill panel and remove the panel. Retain the infill panel if the motorcycle is to be returned to its original condition.



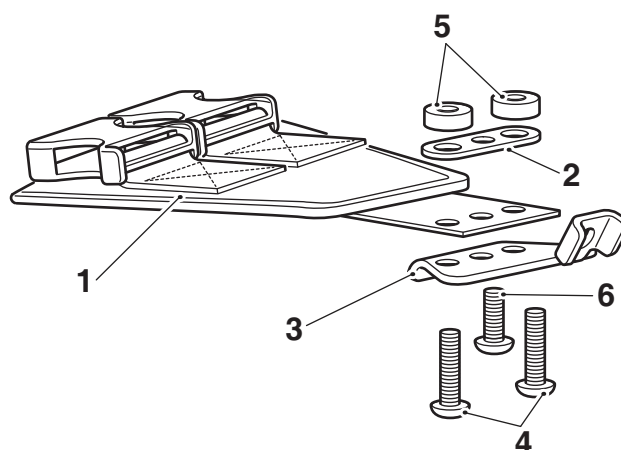
1. Main fuse
2. Infill panel

6. Remove the fixings securing the front infill panels to the headstock. Retain the fixings if the motorcycle is to be returned to its original condition.



1. Fixings
2. Front infill panels

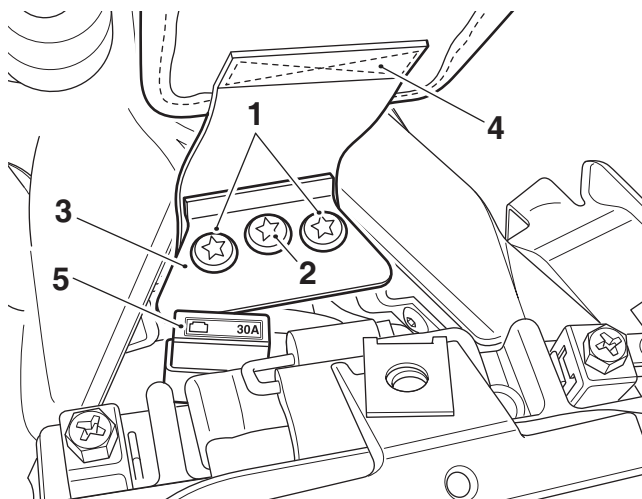
7. Assemble the lower and upper clamps to the front harness, as shown in the illustration below.
8. Fit the M6 x 30 mm screws to the outer holes of the clamps and front mounting, as shown in the illustration below.
9. Fit the M6 x 16 mm screw through the centre hole.
10. Fit the two spacers to the two M6 x 30 mm screws, as shown below.



1. Front harness
2. Clamp, lower
3. Clamp, upper
4. Screws, M6 x 30 mm
5. Spacers
6. Screw, M6 x 16 mm

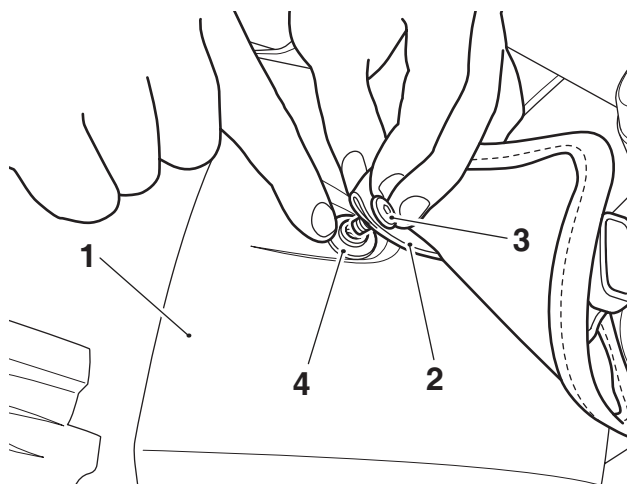
11. Fit the front harness and clamp assembly to the headstock. Ensure the spacers remain on the M6 x 30 mm screws. Tighten the three fixings to 4 Nm.

12. Attach the main fuse to the upper clamp.



1. Screws, M6 x 30 mm
2. Screw, M6 x 16 mm
3. Clamp, upper
4. Front harness
5. Main fuse

13. Reconnect the battery, red (positive) lead first, and tighten the battery terminals to **4.5 Nm**.
14. Position the front panel onto the fuel tank. Fit the two outer fixings only at this stage.
15. Align the rear securing strap of the front harness with the centre fixing position for the front panel on the fuel tank. Fit the M5 x 16 mm screw and compression limiter from the kit, as shown, to secure the front harness. Tighten the three front panel fixings to **2 Nm**.

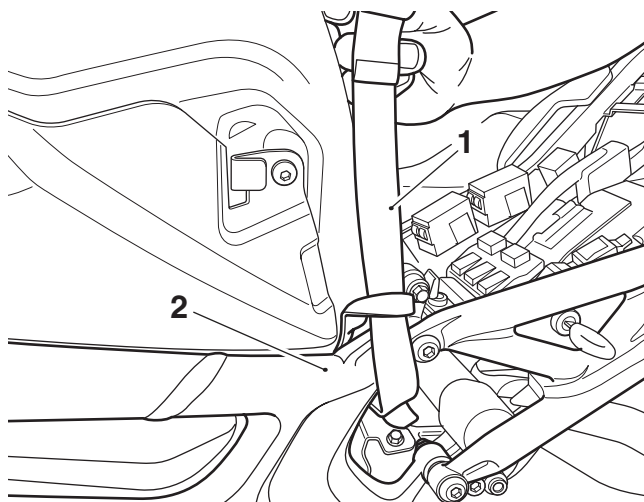


T2118

1. Front panel
2. Front harness
3. Screw, M5 x 16 mm
4. Compression limiter

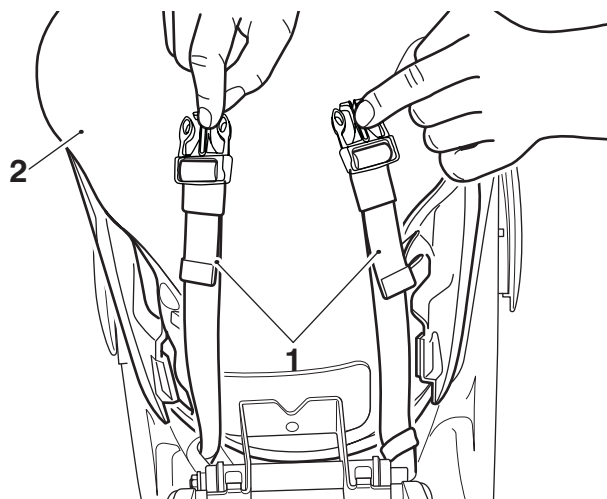
Installing the Rear Straps

1. Feed the loop end of one of the rear straps through the frame near the rear of the fuel tank.
2. Pass the other end of the strap, with clip, through the loop and pull tight to secure at the frame. Ensure the strap remains flat around the frame, as shown below.



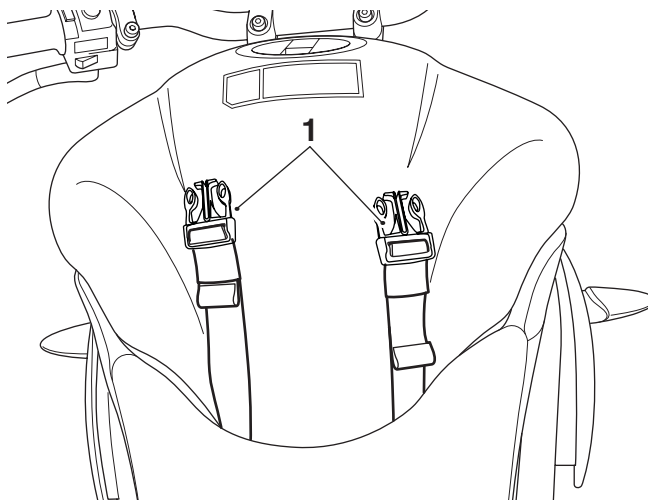
1. Rear strap
2. Motorcycle frame, left hand side shown

3. Repeat steps 1 and 2 for the second rear strap at the opposite side of the motorcycle frame.
4. Ensure, when fitted, both rear straps are of equal length when pulled up to the top of the fuel tank, as shown. Adjust the straps as necessary.



1. Rear straps
2. Fuel tank

-
5. Refit the seat, as described in the Service Manual. Ensure the rear straps are routed as shown below.



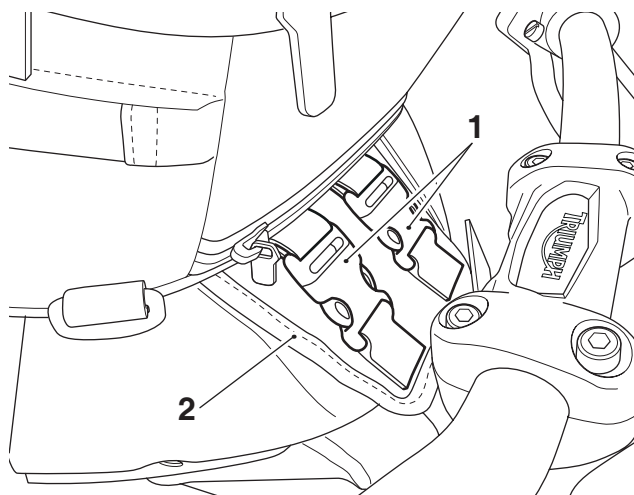
1. Rear straps

Installing the Tank Bag

Note:

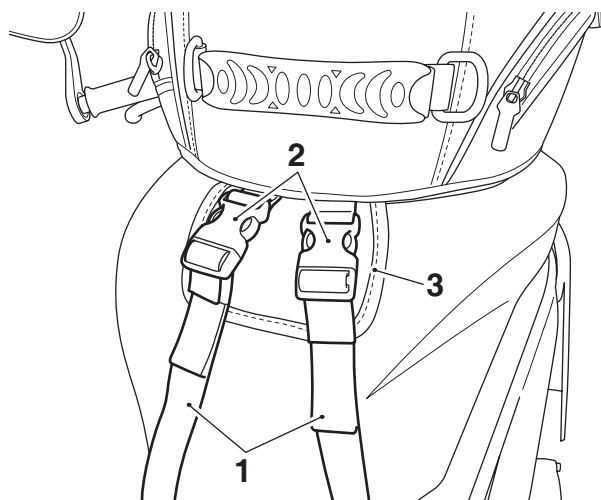
- When using the tank bag, always pack heavier items at the bottom of the bag.
- Ensure the fuel tank and the underside of the tank bag are clean and dry prior to fitting.

1. Position the tank bag on the fuel tank and attach the retaining clips at the front of the tank bag to the front harness.



1. Retaining clip
2. Front harness

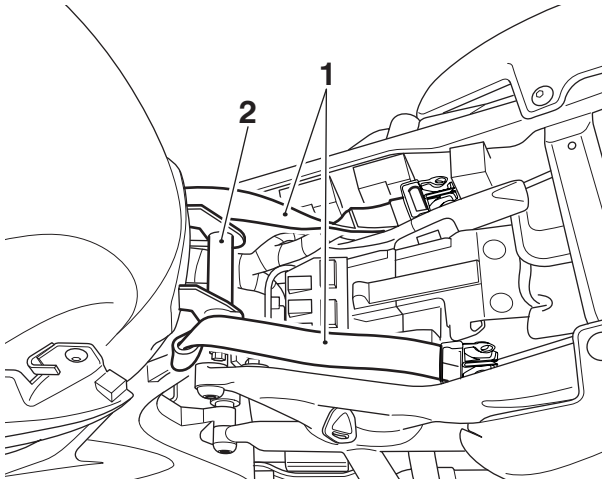
2. Attach the clips on the rear of the tank bag to the rear straps. Ensure the flap on the tank bag is positioned under the clips.



1. Rear straps
2. Retaining clips
3. Flap

3. Adjust the rear straps to ensure the tank bag is held securely on the fuel tank.

4. Check there is no significant side to side or upwards movement of the tank bag. It should not be possible to lift the tank bag away from fuel tank when the tank bag rear straps are adjusted correctly. If necessary re-adjust the tank bag rear straps.
5. If riding without the tank bag, remove the seat, as described in the Service Manual, and store the rear straps in the area below the seat. Ensure the rear straps do not interfere with the seat's front mounting.

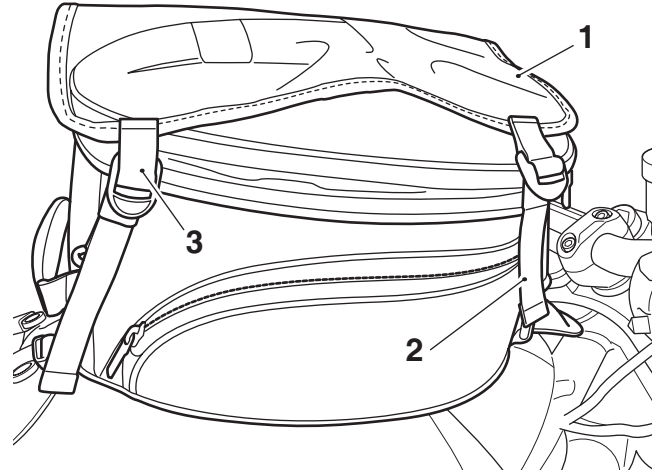


1. Rear straps
2. Seat's front mounting

6. Refit the seat as described in the Service Manual.

Installing the Map Pocket

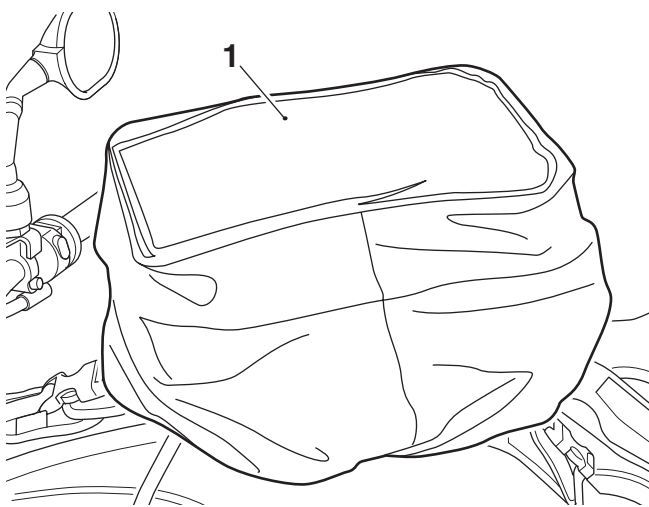
1. Position the map pocket over the tank bag with the longer straps to the front.
2. Attach the clips on the four straps to the D-loops on the tank bag. Adjust the straps to secure the map pocket.



1. Map pocket
2. Strap, long
3. Strap, short

Installing the Rain Cover

1. Position the rain cover over the tank bag, as shown below.



1. Rain cover

Cleaning



Caution

Use of chemicals or high-pressure spray washers is not recommended for cleaning the tank bag. Using chemicals or pressure washers may damage the tank bag.

To help maintain its appearance, clean the tank bag using a sponge or cleaning cloth with low alkaline soap and water.



Warning

The maximum safe load for the tank bag is 3 kg (6.6 lbs). Never exceed this loading limit as this may cause the motorcycle to become unstable leading to loss of control and an accident.



Warning

After fitting the accessory kit the motorcycle will exhibit new handling characteristics. Operate the motorcycle in a safe area free from traffic to gain familiarity with any new characteristics. Operation of the motorcycle when not familiar with any new handling characteristics may result in loss of motorcycle control and an accident.



Warning

If, after fitting this accessory kit, you have any doubt about the performance of any aspect of the motorcycle, contact an authorised Triumph dealer and do not ride the motorcycle until the authorised dealer has declared it fit for use. Riding a motorcycle when there is any doubt as to any aspect of the performance of the motorcycle may result in loss of control of the motorcycle leading to an accident.



Warning

Never ride an accessory-equipped motorcycle at speeds above 80 mph (130 km/h).

The presence of accessories will cause changes in the stability and handling of the motorcycle. Failure to allow for changes in motorcycle stability may lead to loss of control or an accident.

Remember that the 80 mph (130 km/h) limit will be reduced by the fitting of non-approved accessories, incorrect loading, worn tyres, overall motorcycle condition and poor road or weather conditions.



Warning

The motorcycle must not be operated above the legal road speed limit except in closed-course conditions.



Warning

Only operate this Triumph motorcycle at high speed in closed-course, on-road competition or on closed-course racetracks. High-speed operation should only be attempted by riders who have been instructed in the techniques necessary for high speed riding and are familiar with the motorcycle's characteristics in all conditions.

High-speed operation in any other circumstances is dangerous and will lead to loss of motorcycle control and an accident.