

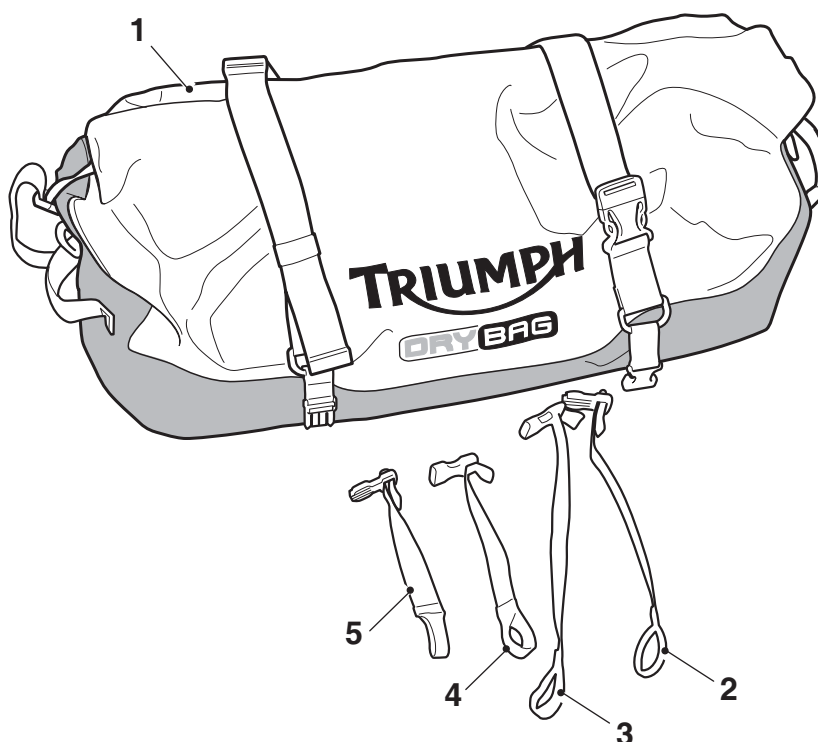
Fitting Instructions:

Tiger XR, Tiger XR_T, Tiger XR_x, Tiger XC, Tiger XC_A, Tiger XC_x,
Tiger 800, Tiger 800XC, Tiger 800 XC_x, Tiger 800 XC_A, Tiger 800 XR,
Tiger 800 XR_x, Tiger 800 XR_x LRH, Tiger 800 XR_T,
Tiger Explorer, Tiger Explorer XC, Explorer XR, Explorer XR_x, Explorer XR_T,
Explorer XC, Explorer XC_x, Explorer XC_A,
Tiger 1200 XR, Tiger 1200 XR_x, Tiger 1200 XR_x LRH, Tiger 1200 XC_x,
Tiger 1200 XR_T, Tiger 1200 XC_A
A9510082, A9511051

Thank you for choosing this Triumph genuine accessory kit. This accessory kit is the product of Triumph's use of proven engineering, exhaustive testing, and continuous striving for superior reliability, safety and performance.

Completely read all of these instructions before commencing the installation of the accessory kit in order to become thoroughly familiar with the kit's features and the installation process.

These instructions should be considered a permanent part of your accessory kit, and should remain with it even if your accessory-equipped motorcycle is subsequently sold.



Parts Supplied:

1. Roll bag	1 off	4. Mount strap short, female	1 off
2. Mount strap long, male	1 off	5. Mount strap short, male	1 off
3. Mount strap long, female	1 off		



Warning

Fit only genuine Triumph accessories to those models approved by Triumph as listed in the associated Triumph fitting instructions. The accessory kits covered in this instruction are designed for use on specific models of Triumph motorcycle. The accessory kits and the models applicable are listed at the start of the instruction. They should never be fitted to any other Triumph model or to any other manufacturer's motorcycle. Fitting an accessory kit to a Triumph model not listed, or to any other manufacturer's motorcycle will affect the performance, stability and handling of the motorcycle. This may affect the rider's ability to control the motorcycle and could result in an accident causing severe injuries or death.



Warning

Always have Triumph approved parts, accessories and conversions fitted by a trained technician of an authorised Triumph dealer. The fitment of parts, accessories and conversions by a technician who is not of an authorised Triumph dealer may affect the handling, stability or other aspects of the motorcycle's operation, which may result in loss of motorcycle control and an accident.



Warning

Throughout this operation, ensure that the motorcycle is stabilised and adequately supported to prevent risk of injury from the motorcycle falling.



Warning

If the engine has recently been running, the exhaust system will be hot. Before working on or near the exhaust system, allow sufficient time for the system to cool, as touching any part of a hot exhaust could cause burn injuries.



Warning

Install the roll bag only in the positions described below. Installation of the roll bag in any other position on the motorcycle will affect the handling, stability or other aspects of the motorcycle's operation, which may result in loss of motorcycle control and an accident.



Warning

The tail pack must not be fitted in conjunction with a top box. Installation of the tail pack together with a top box will affect the handling, stability or other aspects of the motorcycle's operation which may result in loss of motorcycle control and an accident.



Warning

Remove the shoulder strap from the roll bag before mounting to the motorcycle.

Operation of the motorcycle with the shoulder strap fitted may result in loss of motorcycle control and an accident.



Warning

Ensure the two radial tensioning straps are clipped to the buckles on the bag and fully tensioned before mounting the roll bag to the motorcycle. Riding the motorcycle with the straps loose will prevent the bag from being correctly retained by the mounting straps and may result in loss of motorcycle control and an accident.



Warning

Always ensure the roll bag mounting straps are correctly tensioned before riding the motorcycle. Operation of the motorcycle with the roll bag loose may result in loss of motorcycle control and an accident.



Warning

Remove all straps from the motorcycle when operating the motorcycle with the roll bag removed. Operation of the motorcycle with the straps fitted and the roll bag removed may result in loss of motorcycle control and an accident.



Caution

Remove all straps from the motorcycle when operating the motorcycle with the roll bag removed. Operation of the motorcycle with the straps fitted and the roll bag removed may result in damage to the straps or motorcycle.

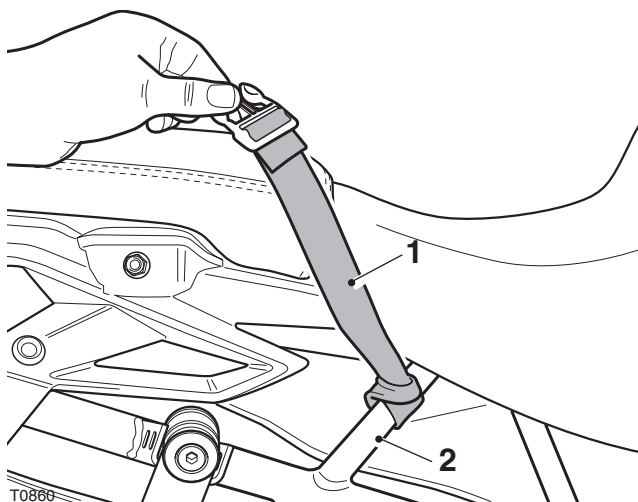
Note:

- When using the roll bag, always pack heavier items at the bottom of the bag.

Fitment to Pillion Seat

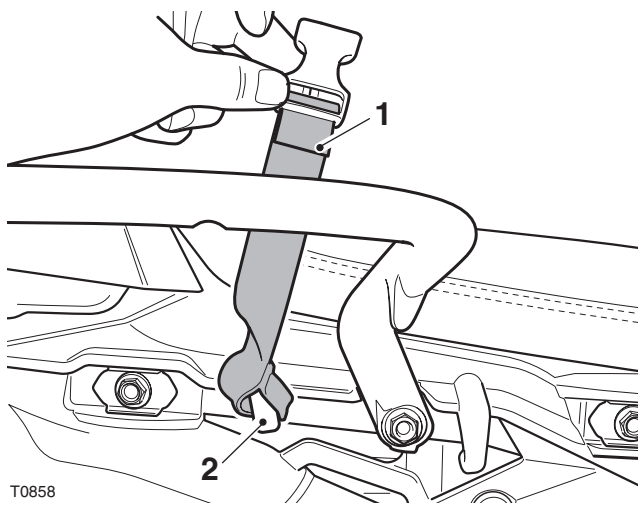
Tiger XR, Tiger XR_T, Tiger XR_x, Tiger XC, Tiger XC_A, Tiger XC_x, Tiger 800, Tiger 800XC, Tiger 800 XC_x, Tiger 800 XC_A, Tiger 800 XR, Tiger 800 XR_x, Tiger 800 XR_x LRH, Tiger 800 XR_T

1. Wrap the long female mounting strap around the left hand side of frame, so the tensioning strap is uppermost.
2. Wrap the long male mounting strap around the right hand side of frame, so the tensioning strap is uppermost.



1. Long strap (right hand shown)
2. Frame

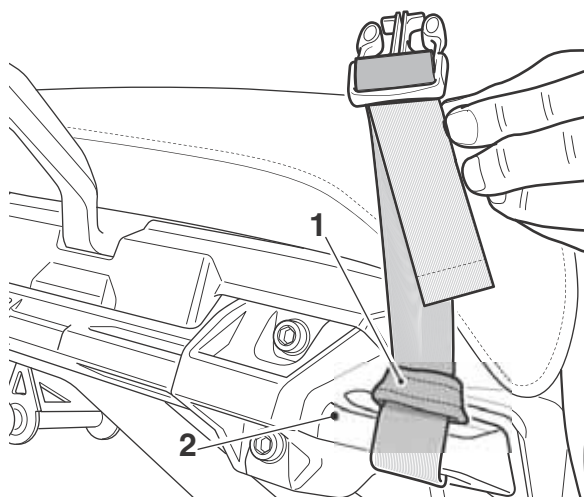
3. Wrap the short male mounting strap around the lashing hook on the left hand rear side panel, so the tensioning strap is uppermost.
4. Wrap the short female mounting strap around the lashing hook on the right hand rear side panel, so the tensioning strap is uppermost.



1. Short strap (right hand shown)
2. Lashing hook

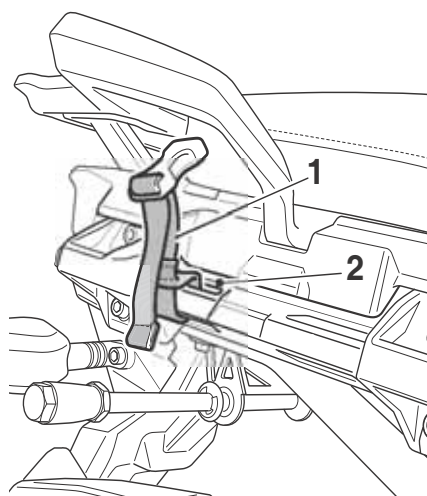
Tiger Explorer, Tiger Explorer XC, Explorer XR, Explorer XR_x, Explorer XR_T, Explorer XC, Explorer XC_x, Explorer XC_A, Tiger 1200 XR, Tiger 1200 XR_x, Tiger 1200 XR_x LRH, Tiger 1200 XC_x, Tiger 1200 XR_T, Tiger 1200 XC_A

5. Wrap the long female mounting strap through the front eyelet of the left hand side pannier mounting, so the tensioning strap is uppermost.
6. Wrap the long male mounting strap through the front lashing eyelet of the right hand side pannier mounting, so the tensioning strap is uppermost.



1. Long strap (right hand shown)
2. Lashing eyelet (right hand shown)

7. Wrap the short male mounting strap through the rear eyelet of the left hand side pannier mounting, so the tensioning strap is uppermost.
8. Wrap the short female mounting strap through the lashing eyelet of the right hand side pannier mounting, so the tensioning strap is uppermost.



1. Short strap (right hand shown)
2. Lashing eyelet (right hand shown)



Warning

Tie any excess strap back around itself to prevent the strap becoming trapped in the motorcycle.

Operation of the motorcycle with any excess strap not secured may result in damage to the straps or the motorcycle.



Caution

Tie any excess strap back around itself to prevent the strap touching the motorcycle exhaust or chafing against the motorcycle.

Operation of the motorcycle with any excess strap not secured may result in damage to the straps or the motorcycle.

Note:

- Ensure the underside of the roll bag is clean and dry prior to fitting.
9. Position the roll bag on the pillion seat as required.
 10. Attach the straps to the roll bag and tension.
 11. Securely tie any excess strap back around itself.



Warning

Ensure the roll bag mounting straps do not interfere with the correct operation of the sliding carriage (if fitted).

Riding the motorcycle with the sliding carriage operation restricted may cause the motorcycle to become unstable, leading to loss of control and an accident.



Warning

The maximum safe load for the roll bag is 3 kg (6.6 lbs). Never exceed this loading limit as this may cause the motorcycle to become unstable, leading to loss of control and an accident.

Cleaning



Caution

Use of chemicals or high-pressure spray washers is not recommended for cleaning the roll bag. Using chemicals or pressure washers may damage the roll bag.

To help maintain its appearance, clean the roll bag using a sponge or cleaning cloth with low alkaline soap and water.



Warning

After fitting the accessory kit the motorcycle will exhibit new handling characteristics. Operate the motorcycle in a safe area free from traffic to gain familiarity with any new characteristics. Operation of the motorcycle when not familiar with any new handling characteristics may result in loss of motorcycle control and an accident.



Warning

Never ride an accessory-equipped motorcycle (including those fitted with Triumph approved windscreens and luggage systems) at speeds above 80 mph (130 km/h). The presence of accessories such as windscreens and luggage systems will cause changes in the stability and handling of the motorcycle. Failure to allow for changes in motorcycle stability may lead to loss of control or an accident.

Remember that the 80 mph (130 km/h) limit will be reduced by the fitting of non-approved accessories, incorrect loading, worn tyres, overall motorcycle condition and poor road or weather conditions.



Warning

This motorcycle must not be operated above the legal road speed limit except in authorised closed-course conditions.



Warning

Only operate this Triumph motorcycle at high-speed in closed-course on road competition or on closed-course racetracks. High-speed operation should only be attempted by riders who have been instructed in the techniques necessary for high-speed riding and are familiar with the motorcycle's characteristics in all conditions.

High-speed operation in any other circumstances is dangerous and will lead to loss of motorcycle control and an accident.