



Accessory Fitting Instructions

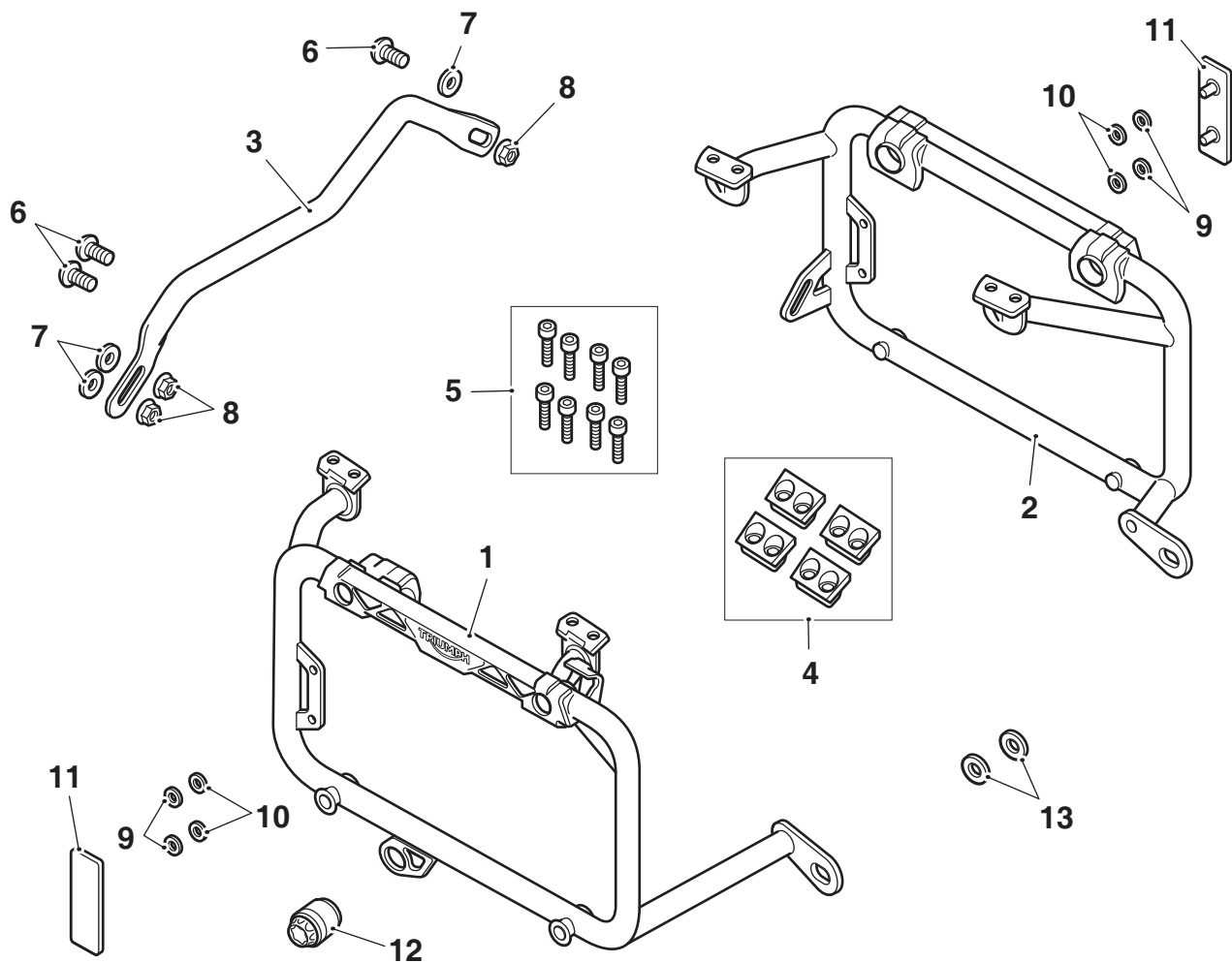
Pannier Mounting Kit	
Kit Number	Models Affected
A9508193	Explorer XR, Explorer XR _x , Explorer XC, Explorer XC _x , Tiger 1200 XR, Tiger 1200 XR _x , Tiger 1200 XR _x LRH, Tiger 1200 XC _x , Tiger 1200 XR _T , Tiger 1200 XC _A

Thank you for choosing this Triumph genuine accessory kit. This accessory kit is the product of Triumph's use of proven engineering, exhaustive testing, and continuous striving for superior reliability, safety and performance.

Completely read all of these instructions before commencing the installation of the accessory kit in order to become thoroughly familiar with the kit's features and the installation process.

These instructions should be considered a permanent part of your accessory kit, and should remain with it even if your accessory equipped motorcycle is subsequently sold.

Parts Supplied A9508193



1. Pannier mounting frame, right hand	1 off	8. Lock nut	3 off
2. Pannier mounting frame, left hand	1 off	9. O-ring 5.6 mm	4 off
3. Pannier frame link bar	1 off	10. Retaining washer 5 mm	4 off
4. Upper clamp	4 off	11. Reflector	2 off
5. Screw M6 x 30 mm	8 off	12. Rubber stop	1 off
6. Screw M8 x 20 mm	3 off	13. Spacer	2 off
7. Washer	3 off		

Warning

The accessory kits covered in this instruction are designed for use on specific models of Triumph motorcycle. The accessory kits and the models applicable are listed at the start of the instruction. They should not be fitted to any other Triumph model or to any other manufacturer's motorcycle. Fitting an accessory kit to a Triumph model not listed, or to any other manufacturer's motorcycle will affect the performance, stability and handling of the motorcycle. This may affect the rider's ability to control the motorcycle and could cause an accident.

Warning

Always have Triumph approved parts, accessories and conversions fitted by a trained technician of an authorised Triumph dealer. The fitment of parts, accessories and conversions by a technician who is not of an authorised Triumph dealer may affect the handling, stability or other aspects of the motorcycle's operation which may result in loss of motorcycle control and an accident.

Warning

Throughout this operation, ensure that the motorcycle is stabilised and adequately supported to prevent risk of injury from the motorcycle falling.

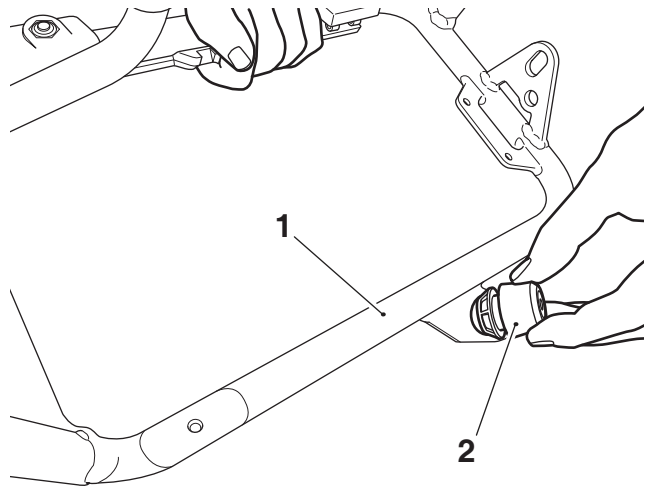
Warning

A torque wrench of known accurate calibration must be used when fitting this accessory kit. Failure to tighten any of the fasteners to the correct torque specification may affect motorcycle performance, handling and stability. This may result in loss of motorcycle control and an accident.

Note:

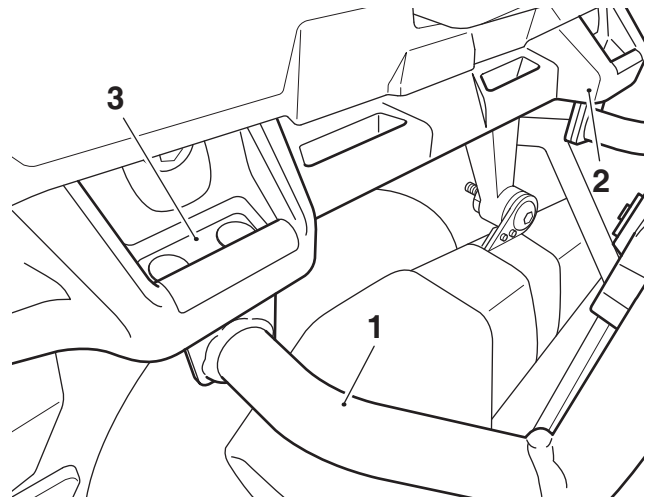
- Triumph offers a broad range of approved genuine accessories for your motorcycle. We cannot therefore cover all possible equipment variations in these instructions. For removal and installation of Triumph Genuine Accessories always refer to the instructions supplied with the respective accessory kit. To obtain additional copies of any Triumph accessory instructions, visit www.triumphinstructions.com or contact your authorised Triumph dealer.

- Remove the rider's and passenger seats as described in the Service Manual.
- Remove the left hand and right hand rear footrest hangers, as described in the Service Manual. Retain the footrest hangers, washers and fixings for reuse.
- Fit the rubber stop to the right hand pannier mounting frame in the orientation shown below.



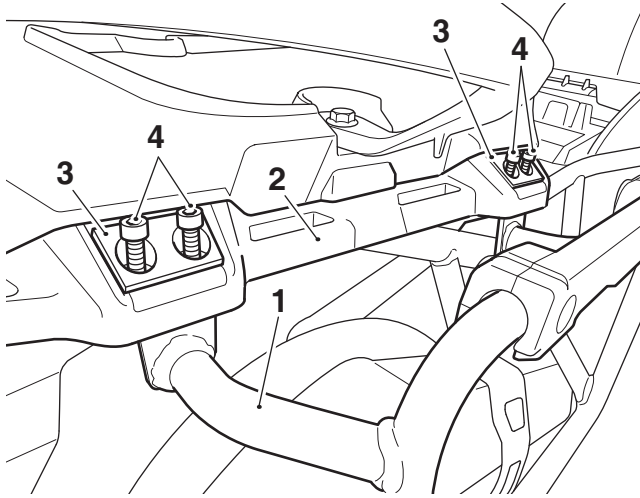
- Pannier mounting frame, right hand
- Rubber stop

- Locate the right hand pannier mounting frame on the rear rack aligning the front and rear fixing positions, as shown



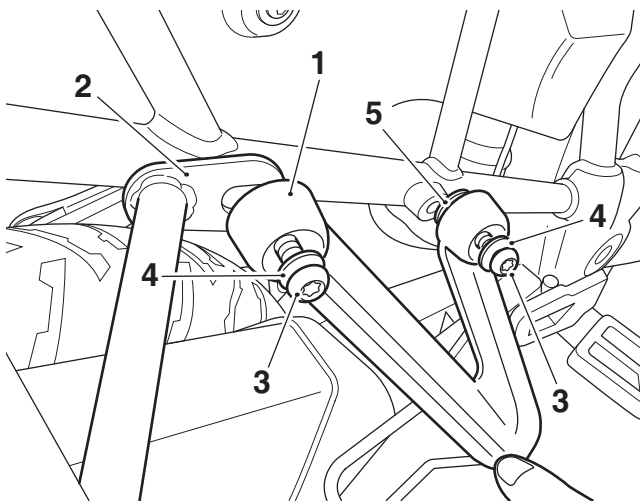
- Pannier mounting frame, right hand
- Rear rack, front fixing position
- Rear rack, rear fixing position

- Fit the upper clamps and M6 x 30 mm screws provided, as shown. Do not fully tighten the fixings at this stage.



- Pannier mounting frame, right hand
- Rear rack
- Upper clamp
- Screws, M6 x 30 mm

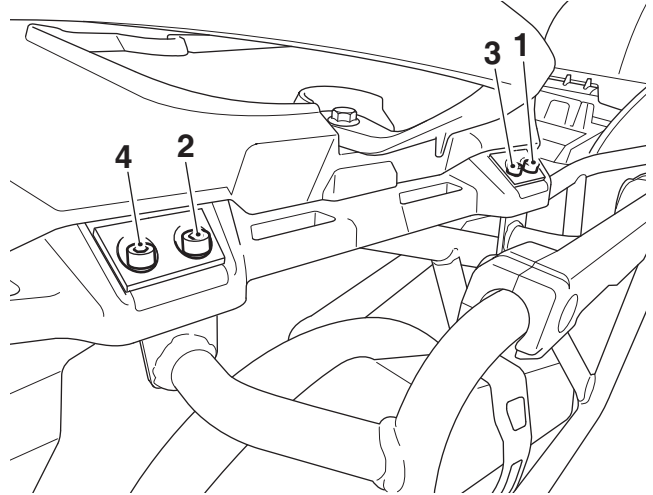
- Refit the right hand rear footrest hanger using the original washers, fixings and a spacer from the kit. Ensure the pannier mounting frame front mount is positioned between the rear footrest hanger and motorcycle frame and the spacer between the rear footrest hanger front mount and motorcycle frame, as shown. Do not fully tighten the fixings at this stage.



- Rear footrest hanger
- Pannier mounting frame front mount
- Fixings
- Washers
- Spacer

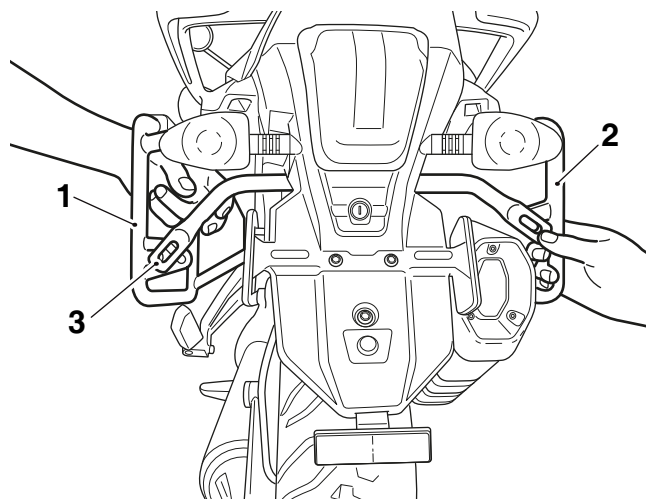
- Tighten the upper clamp fixings to **12 Nm** following the tightening sequence shown below. Repeat the tightening sequence for a second time to confirm the torque figure and finally check the torque figure for a third time at the sequence position 1 only.

Tightening Sequence



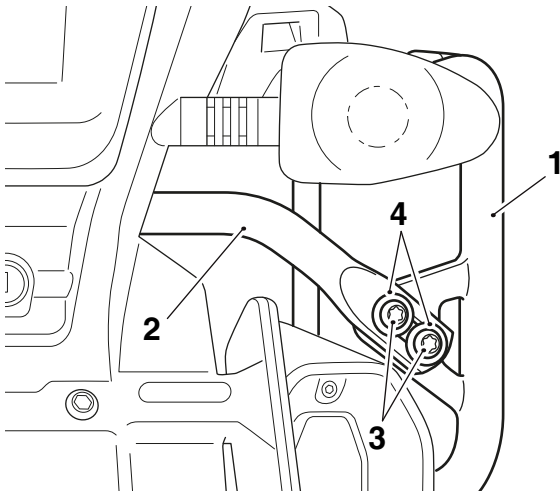
- Front fixing, front upper clamp
- Front fixing, rear upper clamp
- Rear fixing, front upper clamp
- Rear fixing, rear upper clamp

- Tighten the footrest hanger fixings to **27 Nm**.
- Repeat steps 4 to 8 for the left hand side.
- Position the pannier frame link bar through the rear of the motorcycle and align with the left hand and right hand pannier mounting frames, as shown.



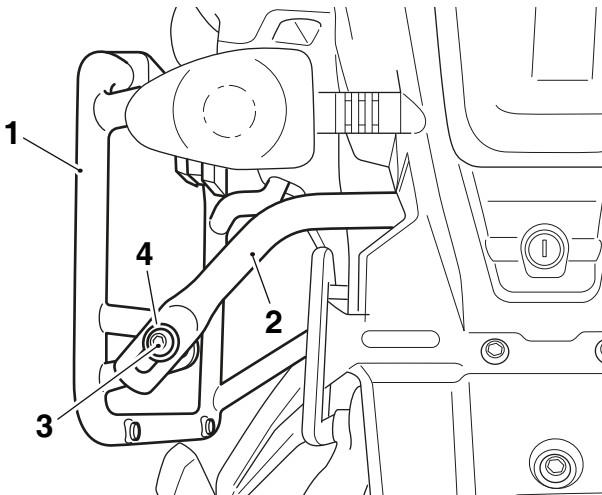
- Pannier mounting frame, left hand
- Pannier mounting frame, right hand
- Pannier frame link bar

- Fit two M8 x 20 mm screws, washers and lock nuts from the kit to secure the right hand side of the pannier frame link bar to the pannier mounting frame. Do not fully tighten the screws at this stage.



- Pannier mounting frame, right hand
- Pannier frame link bar
- Screw, M8 x 20 mm
- Washer

- Fit an M8 x 20 mm screw, washer and lock nut from the kit to secure the left hand side of the pannier frame link bar to the pannier mounting frame. Do not fully tighten the screw at this stage.



- Pannier mounting frame, left hand
- Pannier frame link bar
- Screw, M8 x 20 mm
- Washer

- Tighten the two pannier frame link bar lock nuts on the right hand side before tightening the single pannier frame link bar lock nut on the left hand side. While holding the screws tighten the lock nuts to **20 Nm**.
- Refit the rider's and passenger seats, as described in the Service Manual.

Rear Side Reflectors

Notice

Failure to fit a reflector to each pannier mounting frame as shown may contravene the laws of your country, state or territory. This will render the motorcycle illegal for road use where such laws apply. Always fit reflectors as shown.

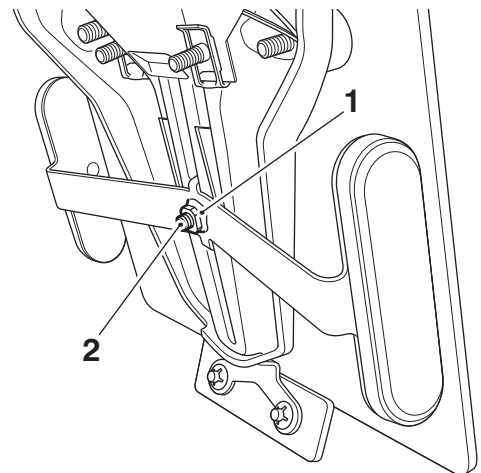
Notice

Do not fit a reflector to each pannier mounting frame in Japan as this will contravene Japanese law and render the motorcycle illegal for road use.

! Caution

If for any reason the pannier mounting frames are removed, failure to fit the rear side reflectors may contravene the laws of your country, state or territory. This will render the motorcycle illegal for road use where such laws apply. Always refit the rear side reflectors if they were fitted as original equipment.

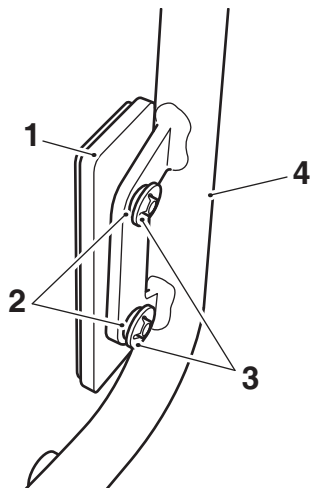
- Undo and remove the rear side reflectors if fitted. Retain the reflectors, bracket and fixing for reuse if the motorcycle is to be returned to its original condition.



- Reflector bracket
- Fixing

Note:

- **Ensure the reflectors are positioned facing outwards from the motorcycle.**
16. Position the rear side reflectors from the kit to both pannier mounting frames and secure using the rubber O-rings and the retaining washers, as shown below.



- 1. Side reflector
- 2. O-ring
- 3. Retaining washer
- 4. Pannier mounting frame (right hand shown)

Replacement Tyres

Note:

- **A list of approved tyres specific to these models is available from your authorised Triumph dealer, or on the internet at www.triumph.co.uk.**



Warning

Use the recommended tyres **ONLY** in the combinations given. Do not mix tyres from different manufacturers or mix different specification tyres from the same manufacturers as this may result in loss of motorcycle control and an accident.



Warning

Never ride an accessory-equipped motorcycle, or a motorcycle carrying a payload of any kind, at speeds above 80 mph (130 km/h). In either/both of these conditions, speeds in excess of 80 mph (130 km/h) should not be attempted even where the legal speed limit permits this.

The presence of accessories and/or payload will cause changes in the stability and handling of the motorcycle.

Failure to allow for changes in motorcycle stability may lead to loss of motorcycle control and an accident.

When riding at high speed, always be aware that various motorcycle configurations and environmental factors can adversely affect the stability of your motorcycle. For example:

- Incorrectly balanced loads on both sides of the motorcycle
- Incorrectly adjusted front and rear suspension settings
- Incorrectly adjusted tyre pressures
- Excessively or unevenly worn tyres
- Side winds and turbulence from other vehicles
- Loose clothing.

Remember that the 80 mph (130 km/h) limit will reduce by the fitting of non-approved accessories, incorrect loading, worn tyres, overall motorcycle condition and poor road or weather conditions.



Warning

This motorcycle must not be operated above the legal road speed limit except in authorised closed-course conditions.



Warning

Only operate this Triumph motorcycle at high speed in closed-course, on-road competition or on closed-course racetracks. High-speed operation should only be attempted by riders who have been instructed in the techniques necessary for high-speed riding and are familiar with the motorcycle's characteristics in all conditions.

High-speed operation in any other circumstances is dangerous and will lead to loss of motorcycle control and an accident.



Warning

If, after fitment of this accessory kit, you have any doubt about the performance of any aspect of the motorcycle, contact an authorised Triumph dealer and do not ride the motorcycle until the authorised dealer has declared it fit for use. Riding a motorcycle when there is any doubt as to any aspect of the performance of the motorcycle may result in loss of control of the motorcycle leading to an accident.



Warning

Never ride an accessory equipped motorcycle at speeds above 80 mph (130 km/h).

The presence of accessories will cause changes in the stability and handling of the motorcycle. Failure to allow for changes in motorcycle stability may lead to loss of control or an accident.

Remember that the 80 mph (130 km/h) limit will be reduced by the fitting of non-approved accessories, incorrect loading, worn tyres, overall motorcycle condition and poor road or weather conditions.