

English

Fitting Instructions:

America from VIN 468391 and Speedmaster from VIN 469051

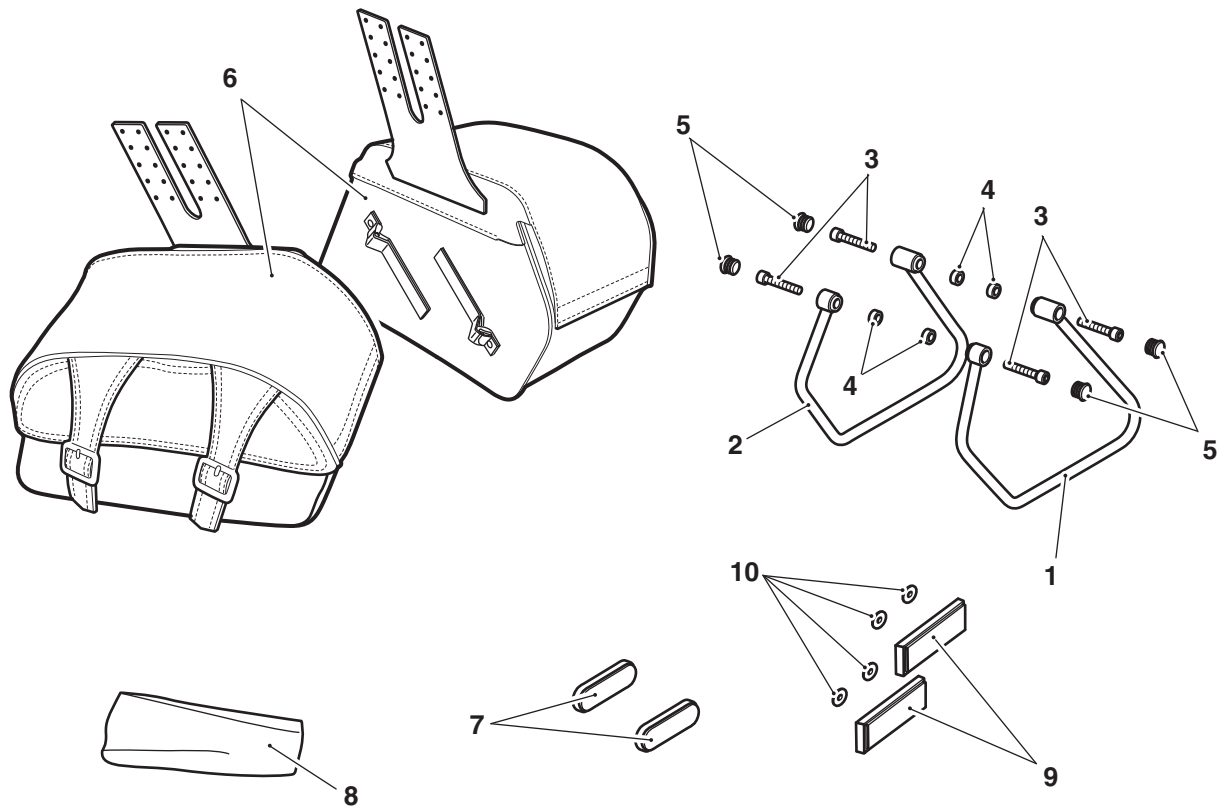
A9508159

Thank you for choosing this Triumph genuine accessory kit. This accessory kit is the product of Triumph's use of proven engineering, exhaustive testing, and continuous striving for superior reliability, safety and performance.

Completely read all of these instructions before commencing the installation of the accessory kit in order to become thoroughly familiar with the kit's features and the installation process.

These instructions should be considered a permanent part of your accessory kit, and should remain with it even if your accessory-equipped motorcycle is subsequently sold.

A9508159



cglm

Parts Supplied:

1.	Pannier rail, left hand	1 off	6.	Pannier bag, large	2 off
2.	Pannier rail, right hand	1 off	7.	Reflector, accessory kit with the self-adhesive reflector	2 off
3.	Bolt, M8 x 45 mm	4 off	8.	Cleaning wipe	1 off
4.	Spacer ¹	4 off	9.	Reflector, accessory kit with the reflectors secured with retaining washers	2 off
5.	Finisher plugs	4 off	10.	Retaining washers	4 off
¹ For motorcycles with the sissy bar kit - A9758149, A9758167 or A9758168 fitted, the spacers in this kit are not used.					



Warning

This accessory kit is designed for use on Triumph America from VIN 468391 and Speedmaster from VIN 469051 motorcycles only and should not be fitted to any other manufacturer's motorcycle. Fitting this accessory kit to any other manufacturer's motorcycle will affect the performance, stability and handling of the motorcycle. This may affect the rider's ability to control the motorcycle and could cause an accident.



Warning

Always have Triumph approved parts, accessories and conversions fitted by a trained technician of an authorised Triumph dealer. The fitment of parts, accessories and conversions by a technician who is not of an authorised Triumph dealer may affect the handling, stability or other aspects of the motorcycle's operation which may result in loss of motorcycle control and an accident.



Warning

Throughout this operation, ensure that the motorcycle is stabilised and adequately supported to prevent risk of injury from the motorcycle falling.



Warning

A torque wrench of known accurate calibration must be used when fitting this accessory kit. Failure to tighten any of the fasteners to the correct torque specification may result in loss of motorcycle control and an accident.

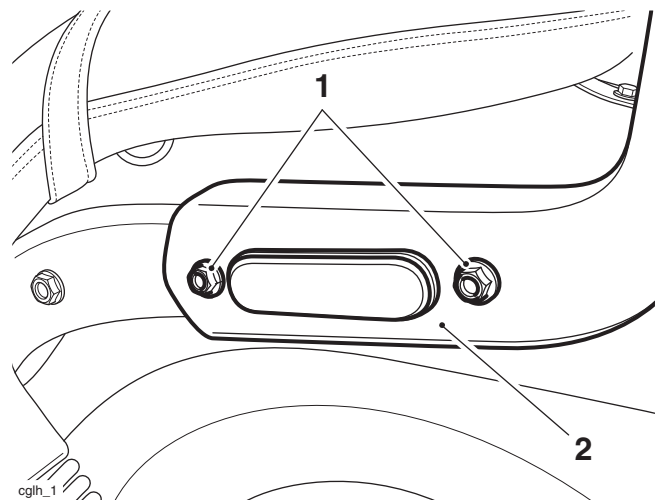
1. Remove the seat, as described in the Owner's Handbook.
2. Disconnect the battery, negative (black) lead first.

Note:

- **For motorcycles with the sissy bar kit - A9758149 fitted, continue from step 3 to step 8. Then continue from Reflector Fitment on page 5.**
- **For motorcycles with the sissy bar kit - A9758167 or A9758168 fitted, continue from step 9 to step 14. Then continue from Reflector Fitment on page 5.**
- **For motorcycles without the sissy bar kit - A9758149, A9758167 or A9758168 fitted, continue from step 15.**

Motorcycle Fitted with the Sissy Bar Kit - A9758149

3. Loosen the bolts securing the sissy bar mounting brackets.



1. Bolts

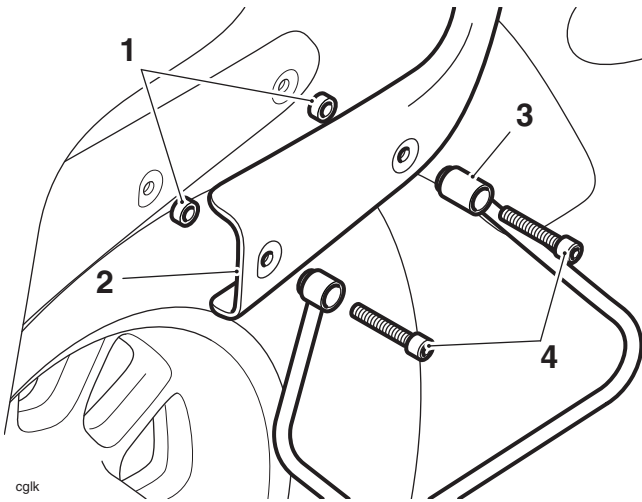
2. Sissy bar mounting bracket, left hand side shown

4. From the kit collect the pannier rails and the bolts.

Note:

- **Note that there are spacers between the mudguard brackets and the sissy bar mounting brackets.**
- 5. Working on the left hand side, remove the bolts from the sissy bar mounting bracket. Retain the bolts if the motorcycle is to be returned to its original condition.

- Fit the pannier rail and the bolts from the kit to the motorcycle as shown below. Ensure the bolts go through the spacers. Do not fully tighten at this stage.



cgik

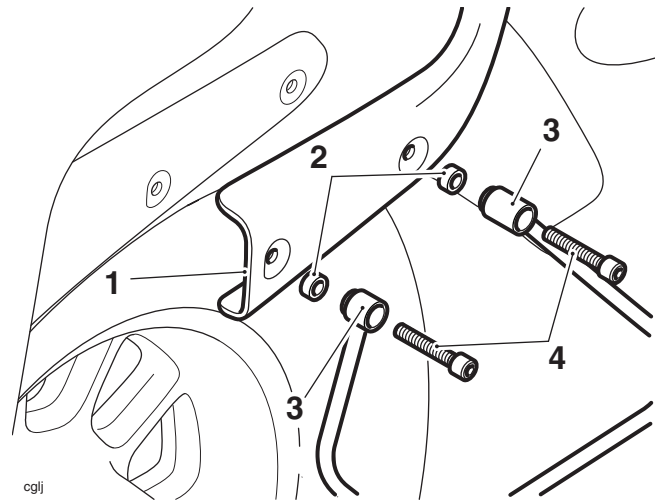
- Spacers
- Sissy bar mounting bracket
- Pannier rail
- Bolts

Note:

- Do not remove the reflectors if they are fitted to the sissy bar.
- Repeat steps 5 and 6 for the right hand side.
 - Ensure that the sissy bar assembly is aligned centrally on the motorcycle, tighten the bolts to **25 Nm** and fit the finisher plugs to cover the bolts.

Motorcycle Fitted with the Sissy Bar Kit - A9758167 or A9758168

- From the kit collect the pannier rails and the bolts.
- From the sissy bar kit A9758167 or A9758168 collect the four spacers.
- Working on the left hand side, remove the bolts from the sissy bar mounting bracket. Retain the bolts if the motorcycle is to be returned to its original condition.
- Fit the pannier rail, spacers and the bolts from the kits to the motorcycle as shown below. Do not fully tighten at this stage.



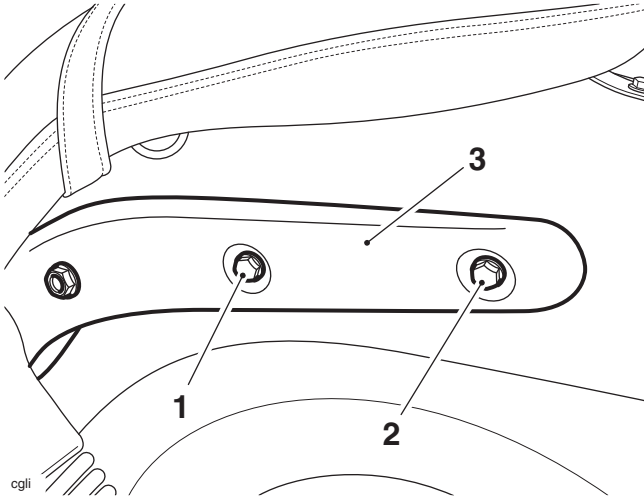
cgli

- Sissy bar mounting bracket
- Spacers, from A9758167 or A9758168
- Pannier rail
- Bolts

- Repeat steps 11 and 12 for the right hand side.
- Ensure that the sissy bar assembly is aligned centrally on the motorcycle, tighten the bolts to **25 Nm** and fit the finisher plugs to cover the bolts.

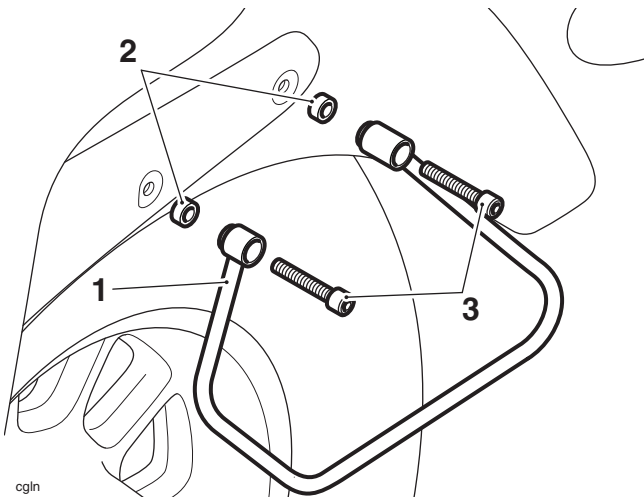
Motorcycles without the Sissy Bar Kit - A9758149, A9758167 or A9758168 Fitted

- Remove the centre and rear bolts securing the mudguard brackets. Retain the bolts if the motorcycle is to be returned to its original condition.



- 1. Bolt, M8 x 33 mm**
- 2. Bolt, M8 x 25 mm**
- 3. Mudguard bracket**

- Working on the left hand side, fit the spacers, pannier rail and the bolts from the kit to the motorcycle as shown below. Tighten the bolts to **25 Nm** and fit the finisher plugs to cover the bolts.



- 1. Spacers**
- 2. Mounting bracket**
- 3. Bolt**

- Repeat steps 15 and 16 for the right hand side.

Reflector Fitment - United States, Canada and Singapore Only

Note:

- If side reflectors are not required in your country or region, continue from step 31.
- If fitting the self-adhesive reflectors, continue from step 18 and omit steps 22 to 30.
- If fitting the reflectors secured by retaining washers omit steps 18 to 21 and continue from step 22.

Notice

Failure to fit a reflector to each saddlebag as shown contravenes federal law and renders the motorcycle illegal for road use in the United States, Canada and Singapore. Always fit the reflectors as shown.

Accessory Kit with the Self-Adhesive Reflector

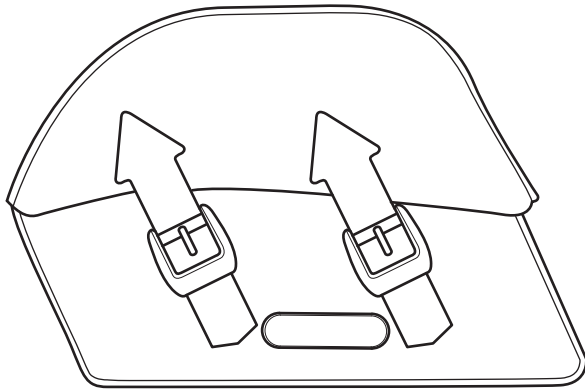
! Caution

When fitting self-adhesive parts care must be taken to ensure positioning is correct and accurate. Once the adhesive has been attached to the mounting surface, there is no satisfactory method of removal and re-positioning if incorrectly aligned. Initial bonding is instant, full bonding is achieved after 72 hours.

Note:

- Read the warning notices printed on the cleaning wipe packet in the fitting kit.
- The surfaces to which the reflectors are affixed must be clean and dry to ensure that the adhesive has a sound base to adhere to. Use the cleaning wipe supplied for this purpose.

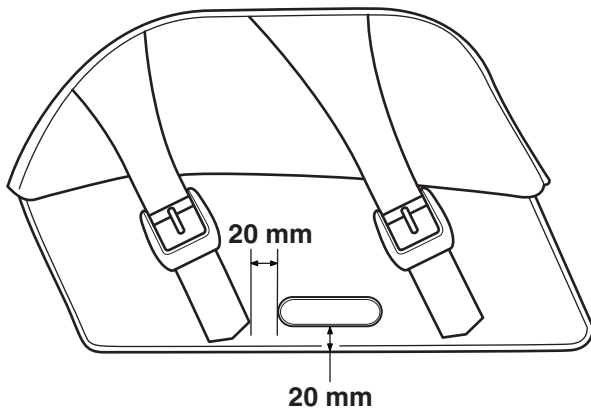
18. Clean the mounting surface area of the saddlebag with the cleaning wipe provided.



cglo_1

1. Cleaning area

19. Remove the protective film from the adhesive pad on the rear of the reflector.
20. Carefully locate the reflector on to the saddlebag centrally between the straps as shown below. Apply firm pressure to the entire reflector to ensure a good bond is achieved.

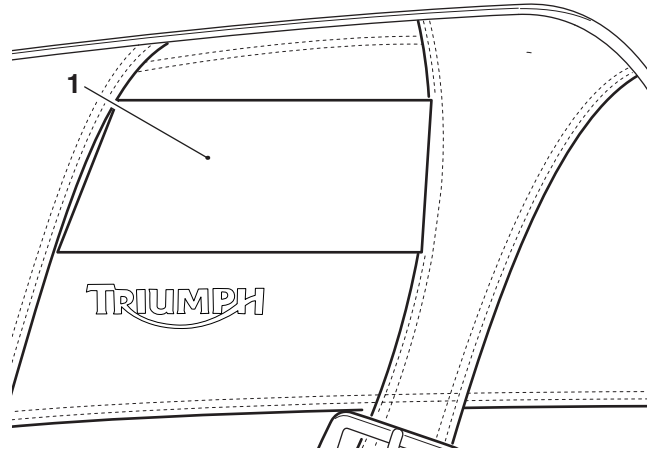


Location for Reflector

21. Repeat steps 9 to 11 for the other saddlebag.

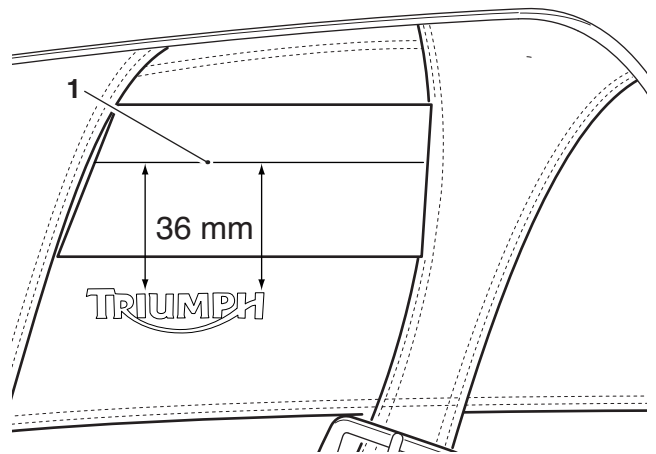
Accessory Kit with the Reflectors Secured with Retaining Washers

22. Apply masking tape, larger than the size of the reflector, to the pannier as shown in the illustration below.



1. Masking tape, right hand pannier shown

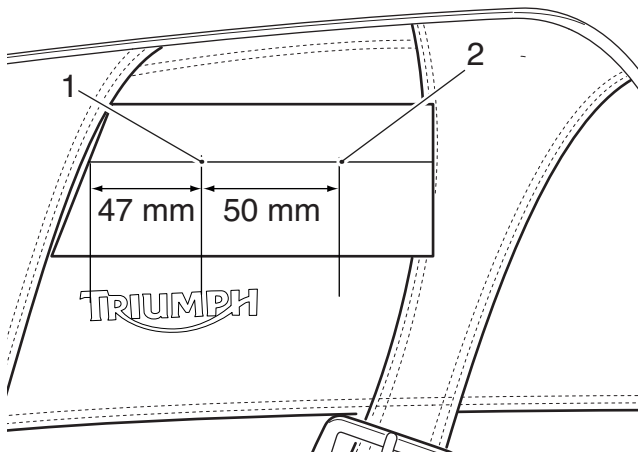
23. From the top edge of the letters I and H of the word Triumph, measure 36 mm upwards. Mark the distance on to the masking tape.
24. Join the two marks on the masking tape with a straight line across the masking tape.



1. Drawn line

25. **Left hand pannier:** From the inner edge of the right hand strap, measure 47 mm along the drawn line and mark the line.
26. **Right hand pannier:** From the inner edge of the left hand strap, measure 47 mm along the drawn line and mark the line.

27. From the new mark, measure 50 mm and mark the line.



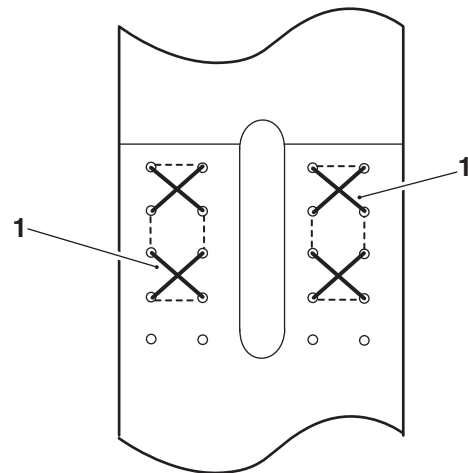
1. 47 mm distance, right hand pannier shown
2. 50 mm distance

Note:

- **For both panniers, only drill through the pannier lid. Take care not to drill into any other part of the pannier.**
28. Open the pannier lid of both panniers and drill a hole in each marked position using a 6 mm diameter drill.
29. Remove the masking tape and clean off any marks.
30. Fit the reflector to the pannier and secure in position with two retaining washers.

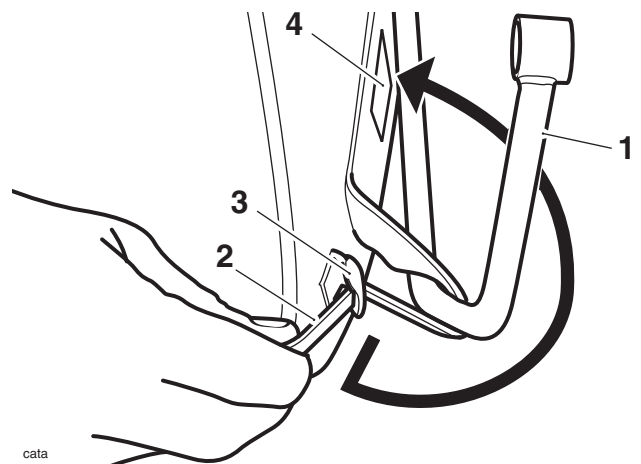
Fitting the Pannier Bags

31. Join the pannier bags together using the wax cord provided, as shown below.



1. Wax cord

32. Fit the pannier bags to the motorcycle.
33. Release the hook and loop straps fitted to the inside face of the pannier bags. Pass the strap around the pannier rail and through the buckle as shown. Secure the end of the strap to the hook and loop pad on the strap.



1. Pannier rail
2. Hook and loop strap
3. Buckle
4. Hook and loop pad

34. Refit the seat as described in the Owner's Handbook.
35. Reconnect the battery, positive (red) lead first.



Warning

The maximum safe load for each pannier is 3 kg (6.6 lbs). Never exceed this loading limit as this may cause the motorcycle to become unstable leading to loss of control and an accident.



Warning

In all cases, loads must be evenly distributed on both sides of the motorcycle. Uneven loading may cause instability, loss of motorcycle control and an accident.



Warning

After fitting the luggage system, operate the motorcycle in a safe area free from traffic to gain familiarity with the new handling characteristics. Operation of the motorcycle when not familiar with any new handling characteristics may result in loss of motorcycle control and an accident.



Warning

If, after fitment of this accessory kit, you have any doubt about the performance of any aspect of the motorcycle, contact an authorised Triumph dealer and do not ride the motorcycle until the authorised dealer has declared it fit for use. Riding a motorcycle when there is any doubt as to any aspect of the performance of the motorcycle may result in loss of control of the motorcycle leading to an accident.



Warning

Never ride an accessory-equipped motorcycle at speeds above 80 mph (130 km/h).

The presence of accessories will cause changes in the stability and handling of the motorcycle. Failure to allow for changes in motorcycle stability may lead to loss of control or an accident.

Remember that the 80 mph (130 km/h) limit will be reduced by the fitting of non-approved accessories, incorrect loading, worn tyres, overall motorcycle condition and poor road or weather conditions.



Warning

The motorcycle must not be operated above the legal road speed limit except in closed-course conditions.



Warning

Only operate this Triumph motorcycle at high speed in closed-course on-road competition or on closed-course racetracks. High speed operation should only be attempted by riders who have been instructed in the techniques necessary for high speed riding and are familiar with the motorcycle's characteristics in all conditions.

High speed operation in any other circumstances is dangerous and will lead to loss of motorcycle control and an accident.