



## Accessory Fitting Instructions

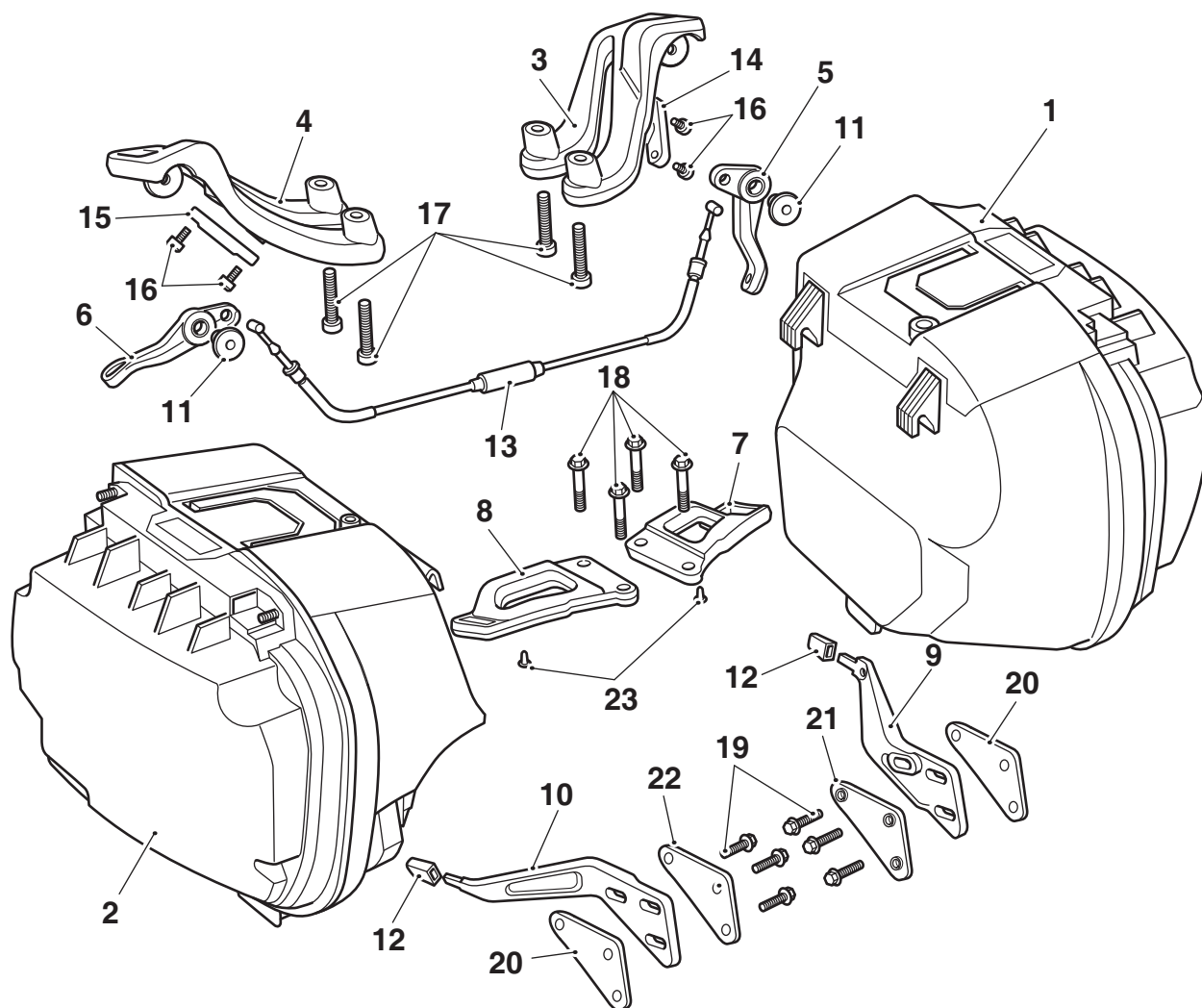
Pannier Kit	
Kit number	Models Affected
A9508092	Tiger Sport

Thank you for choosing this Triumph genuine accessory kit. This accessory kit is the product of Triumph's use of proven engineering, exhaustive testing, and continuous striving for superior reliability, safety and performance.

Completely read all of these instructions before commencing the installation of the accessory kit in order to become thoroughly familiar with the kit's features and the installation process.

These instructions should be considered a permanent part of your accessory kit, and should remain with it even if your accessory-equipped motorcycle is subsequently sold.

Parts supplied



1.	Pannier assembly, left hand	1 off	13.	Cable assembly	1 off
2.	Pannier assembly, right hand	1 off	14.	Cable clamp, left hand	1 off
3.	Pannier rear mount, left hand	1 off	15.	Cable clamp, right hand	1 off
4.	Pannier rear mount, right hand	1 off	16.	Screw, M5 x 10 mm cap head	4 off
5.	Adjusting lever, left hand	1 off	17.	Screw, M8 x 40 mm cap head	4 off
6.	Adjusting lever, right hand	1 off	18.	Screw, M8 x 30 mm hex head	4 off
7.	Pannier front mount, left hand	1 off	19.	Screw, M6 x 25 mm hex head	6 off
8.	Pannier front mount, right hand	1 off	20.	Spacer plate	2 off
9.	Pannier third mount, left hand	1 off	21.	Washer plate, left hand	1 off
10.	Pannier third mount, right hand	1 off	22.	Washer plate, right hand	1 off
11.	Shouldered bolt	2 off	23.	Rubber plug	2 off
12.	Rubber boot	2 off			

## Warning

The accessory kits covered in this instruction are designed for use on specific models of Triumph motorcycle. The accessory kits and the models applicable are listed at the start of the instruction. They should not be fitted to any other Triumph model or to any other manufacturer's motorcycle. Fitting an accessory kit to a Triumph model not listed, or to any other manufacturer's motorcycle will affect the performance, stability and handling of the motorcycle. This may affect the rider's ability to control the motorcycle and may result in loss of motorcycle control and an accident.

## Warning

Always have Triumph approved parts, accessories and conversions fitted by a trained technician of an authorised Triumph dealer. The fitment of parts, accessories and conversions by a technician who is not of an authorised Triumph dealer may affect the handling, stability or other aspects of the motorcycle's operation which may result in loss of motorcycle control and an accident.

## Warning

Throughout this operation, ensure that the motorcycle is stabilised and adequately supported to prevent risk of injury from the motorcycle falling.

## Warning

A torque wrench of known accurate calibration must be used when fitting this accessory kit. Failure to tighten any of the fasteners to the correct torque specification may affect motorcycle performance, handling and stability. This may result in loss of motorcycle control and an accident.

## Warning

If the engine has recently been running, the exhaust system will be hot. Before working on or near the exhaust system, allow sufficient time for the system to cool, as touching any part of a hot exhaust could cause burn injuries.

### Note:

- Triumph offers a broad range of approved genuine accessories for your motorcycle. We cannot therefore cover all possible equipment variations in these instructions. For removal and installation of Triumph Genuine Accessories, always refer to the instructions supplied with the respective accessory kit. To obtain additional copies of any Triumph accessory instructions, visit [www.triumphinstructions.com](http://www.triumphinstructions.com) or contact your authorised Triumph dealer.

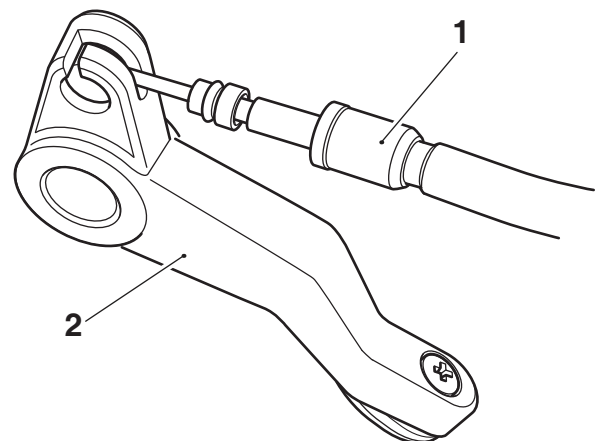
## Installation of the Mounting Brackets

- Position the motorcycle on a paddock stand.
- Remove the seat, as described in the Owner's Handbook.

## Installation of the Rear Pannier Mounts

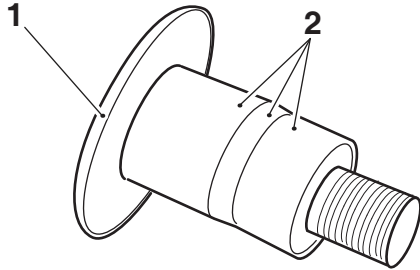
### Note:

- When fitting the pannier cable ensure it is orientated so that the text marking on the cable is facing the front of the motorcycle, and therefore, cannot be seen from the rear of the motorcycle.
- Fit the pannier cable into the left hand adjusting lever, as shown.



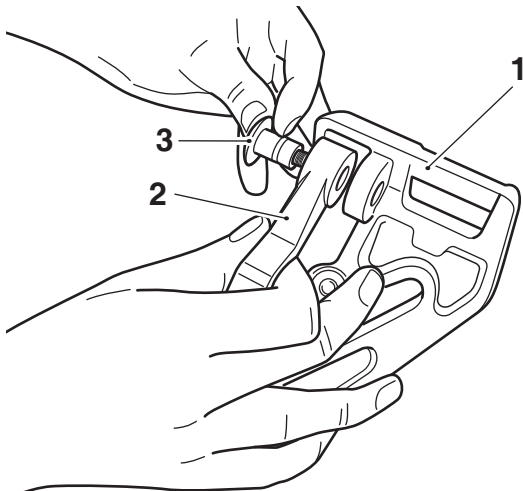
- Pannier cable
- Adjusting lever

4. Collect the shouldered bolt from the kit. Apply a light application of 'Castrol High Temperature Grease' to the areas of the shouldered bolt shown below.



1. Shouldered bolt
2. Grease application areas

5. Fit the left hand adjusting lever to the left hand rear mount bracket, in the orientation shown, and secure with a shouldered bolt from the kit. Tighten the bolt to **22 Nm**.



1. Rear mount bracket
2. Adjusting lever
3. Shoulder bolt



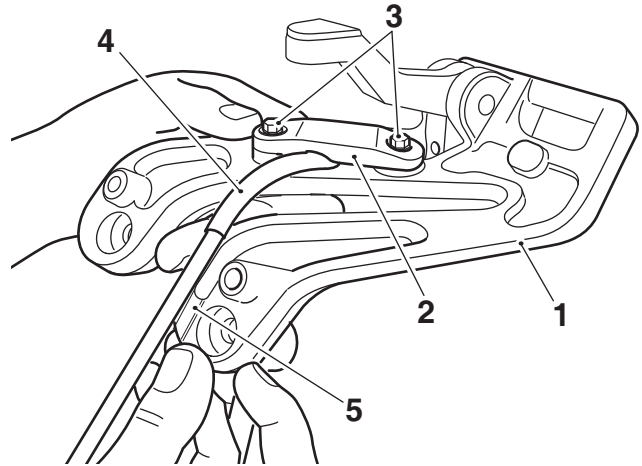
### Caution

When securing the cable clamp to the rear mount bracket with the M5 x 10 mm screws do not exceed the torque value specified. Over tightening the screws will cause damage to the cable clamp and prevent secure retention of the cable.

#### Note:

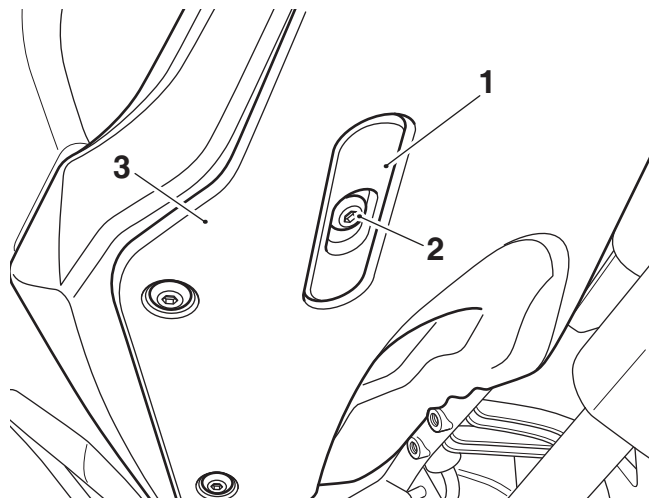
- Ensure the routing and orientation of the cable is correct before securing in position with the cable clamp.

6. Route the cable along the recess of the rear mount bracket, as shown below and fit the left hand cable clamp. Use two M5 x 10 mm screws from the kit to secure the cable clamp and retain the cable to the rear mount bracket. Tighten the screws to **5 Nm**.



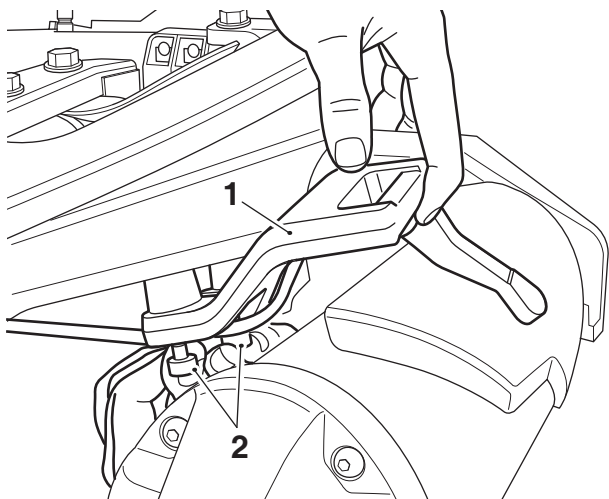
1. Rear mount
2. Cable clamp, left hand
3. Screw, M5 x 10 mm
4. Pannier cable
5. Recess, rear mount

7. Repeat steps 3 to 6 for the right hand side rear pannier mount.
8. Remove the left hand and right hand blanking covers from the rear mudguard to expose the rear pannier mount fixing positions. Retain the blanking covers and fixings for use if the motorcycle is returned to its original condition.



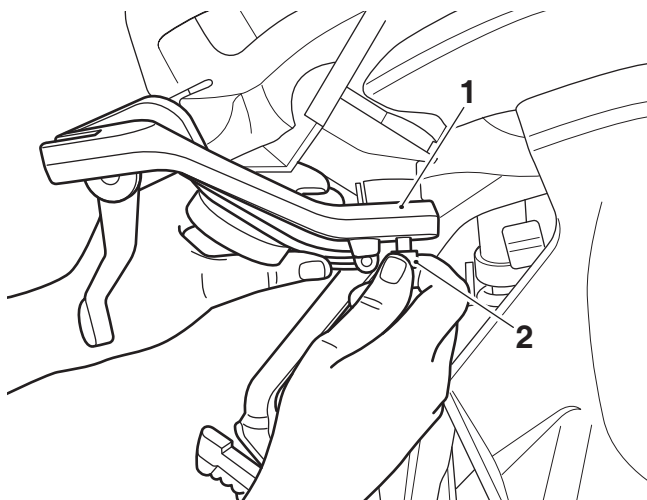
1. Blanking cover
2. Fixing
3. Rear mudguard

9. Fit the right hand rear pannier mount to the motorcycle, in the orientation shown, and secure with the M8 x 40 mm cap head screws provided. Tighten the screws to **25 Nm**.



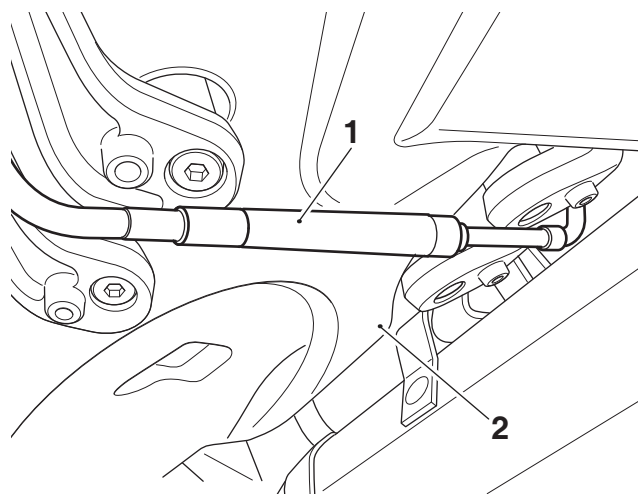
1. Rear pannier mount, right hand  
2. Screw, M8 x 40 mm

10. Fit the left hand rear pannier mount to the motorcycle, in the orientation shown, and secure with the M8 x 40 mm cap head screws provided. Tighten the screws to **25 Nm**.



1. Rear pannier mount, left hand  
2. Screw, M8 x 40 mm

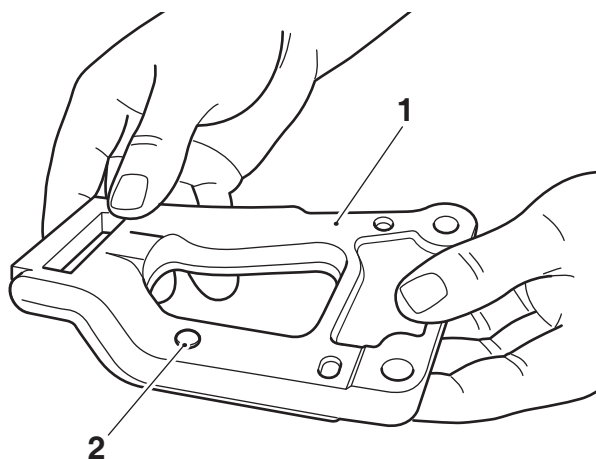
11. The pannier cable, located under the rear number plate hanger, is self supporting and should not be retained to any part of the motorcycle.



1. Pannier cable  
2. Rear number plate hanger

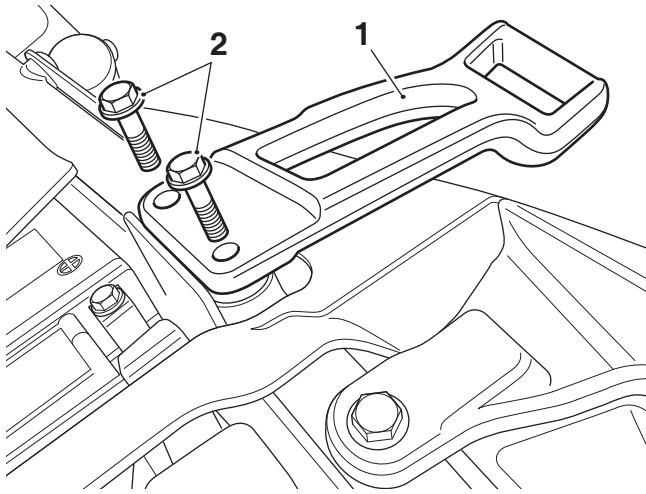
### Installation of the Front Pannier Mounts

12. Fit the rubber plugs, provided in the kit, to the underside of the front pannier mounts.



1. Front pannier mount, right hand shown  
2. Rubber plug

13. Fit the left hand and right hand front pannier mounts to the top of the motorcycle frame and secure with the M8 x 30 mm screws provided. Tighten the screws to **25 Nm**.

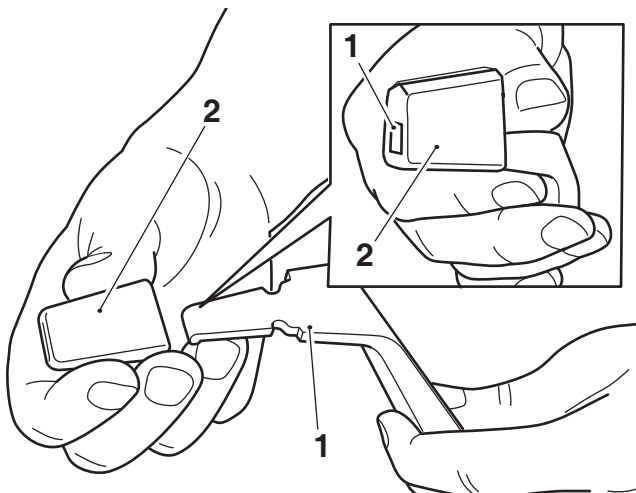


1. Front mount, right hand shown
2. Screw, M8 x 30 mm

### Installation of the Third Mounts

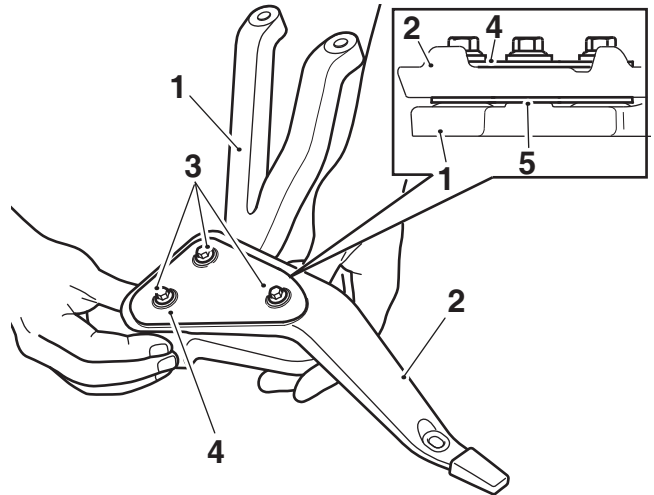
#### Note:

- The tapered edge of the rubber boot must face upwards of the third mount.
14. Fit the rubber boots to the third mounts. When correctly fitted the tip of the third mount should be visible through the rubber boot.



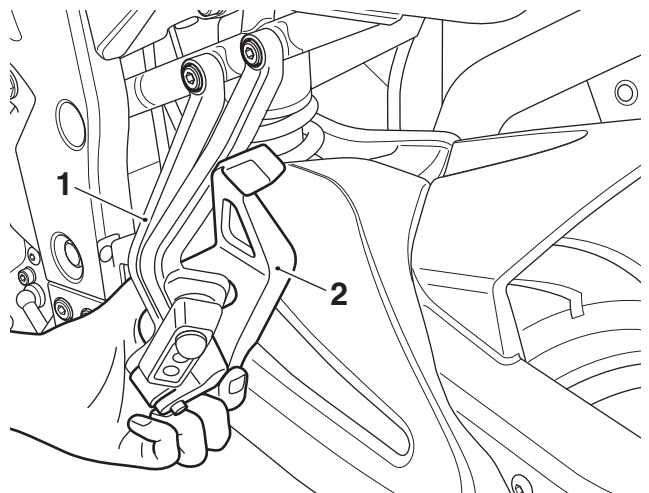
1. Third mount
2. Rubber boot

15. Remove the right hand pillion footrest bracket only.
16. Fit three M6 x 25 mm screws, a spacer plate and the right hand washer plate from the kit to the right hand third mount. Secure the mount to the pillion footrest bracket, in the orientation shown. Refit the right hand pillion footrest bracket, do not fully tighten the screws at this stage.



#### Pillion Footrest Bracket Removed for Clarity

1. Pillion footrest bracket
  2. Third mount, right hand
  3. Screw, M6 x 25 mm
  4. Washer plate, right hand
  5. Spacer plate
17. Repeat step 16 for the left hand third mount. Ensure the left hand third mount is in the orientation shown below. Do not fully tighten the screws at this stage.



1. Pillion footrest bracket
2. Third mount, left hand

## Pannier Cable Adjustment

### Check

#### Warning

The two panniers are linked by a cable to enhance stability.

This cable allows a small amount of sideways pannier movement, independently of the motorcycle.

Riding the motorcycle with panniers fitted and the cable assembly removed or incorrectly adjusted may cause the motorcycle to become unstable leading to loss of motorcycle control and an accident.

The pannier link cable must be checked and if necessary adjusted:

- in accordance with the scheduled maintenance requirements;
- if the pannier link cable has been removed/replaced;
- if the pannier mounts have been removed/replaced;
- if the rear footrest hangers have been removed/replaced;
- if new panniers have been fitted.

### Adjustment

#### Warning

Cable adjustment must be carried out with the panniers empty.

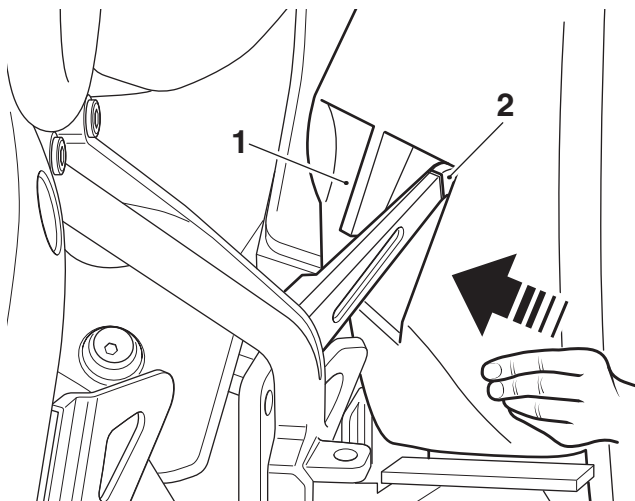
Adjustment of the pannier cable with the panniers loaded will cause an incorrect adjustment to be set.

Riding the motorcycle with panniers fitted and the cable incorrectly adjusted may cause the motorcycle to become unstable leading to loss of motorcycle control and an accident.

1. Check that the motorcycle is in an upright position on a paddock stand.
2. Fit the panniers, as described in Mounting the Panniers on page 9.
3. Ensure the panniers are empty.

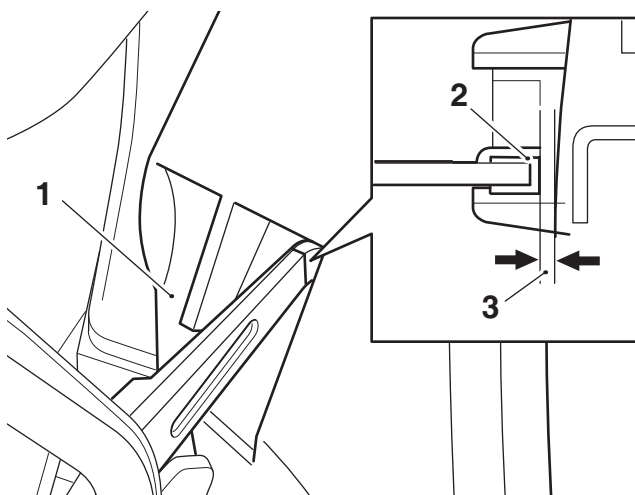
## Third Mount Adjustment

1. Push the left hand pannier towards the centre of the motorcycle until the outer edge of the locating cup comes into contact with the third mount rubber boot.



1. Pannier
2. Third mount rubber boot

2. Adjust the left hand third mount horizontally forwards and rearwards until there is a small visible gap between the rear of the rubber boot and the pannier. Also adjust the third mount vertically up until the top of the rubber boot rests against the top of the pannier locating cup.



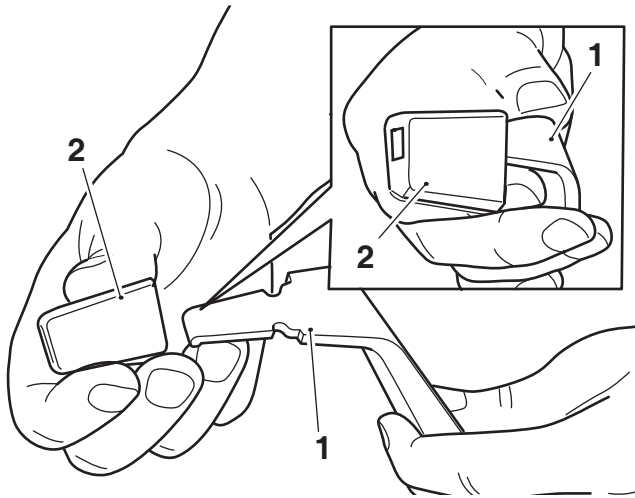
Inset View from Below Pannier

1. Pannier
2. Third mount rubber boot
3. Visible gap

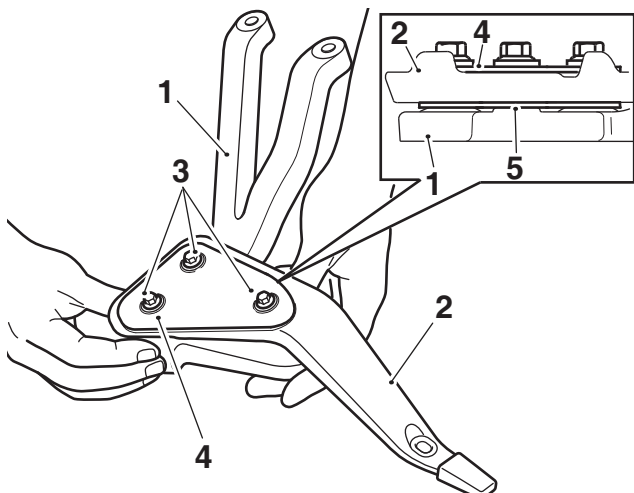


**Note:**

- If correct adjustment is not possible remove the rubber boot from the third mount and refit it to the third mount with the tapered edge of the rubber boot facing downwards, as shown.



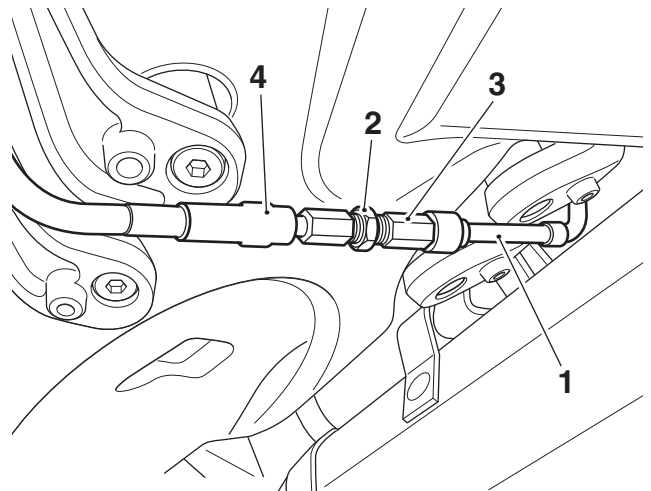
1. Third mount
2. Rubber boot
3. Repeat steps 1 and 2.
4. Tighten the left hand third mount fixing screws to **9 Nm**.
5. Repeat steps 1 to 3 for the right hand side.
6. Remove the right hand pillion footrest bracket and tighten the third mount fixings to **9 Nm**.



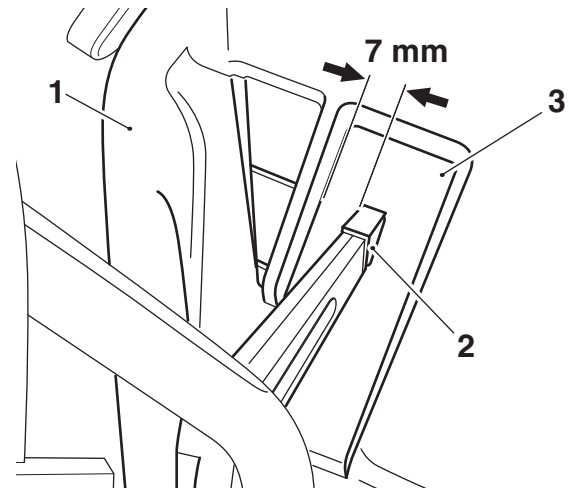
1. Pillion footrest bracket
2. Third mount
3. Screw, M6 x 25 mm
4. Washer plate, right hand
5. Spacer plate
7. Refit the right hand pillion footrest bracket and tighten to **27 Nm**.

**Cable Adjustment**

1. Pull back the rubber boot on the pannier cable to expose the cable adjustment arrangement, as shown.



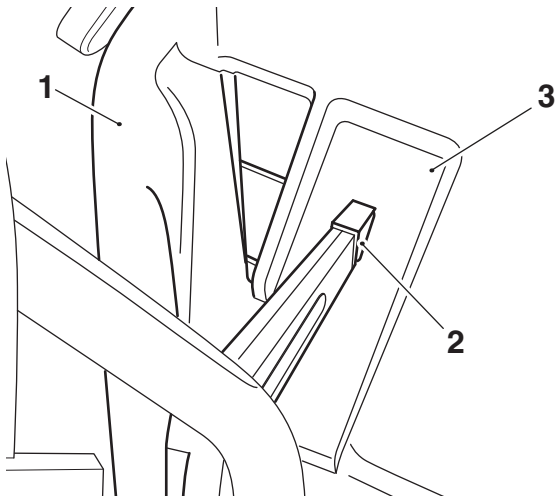
1. Pannier cable
2. Lock nut
3. Cable adjuster
4. Rubber boot
2. Loosen the lock nut on the adjuster cable.
3. Turn the cable adjuster until both the left hand and right hand third mounts are positioned 7 mm from the inner edge of the pannier locating cups, as shown.



1. Pannier (left hand shown)
2. Third mount
3. Locating cup
4. Hold the cable adjuster and tighten the lock nut to **2.5 Nm**.



- Allow the panniers to rest in their adjusted position as shown below.



- Pannier
- Third mount rubber boot
- Locating cup

- Check that the panniers are free to move smoothly and are unobstructed. Rectify if necessary.

### Warning

Do not ride the motorcycle with the third mounts removed or incorrectly adjusted.

Riding the motorcycle with the third mounts removed or incorrectly adjusted may cause the motorcycle to become unstable leading to loss of motorcycle control and an accident.

- Remove the left hand and right hand seat infill mouldings, as described in the Service Manual.
- Refit the seat, as described in the Owner's Handbook.
- Remove the motorcycle from the paddock stand.

#### Note:

- Re-check the pannier cable adjustment and operation at each service as recommended in the Service Maintenance Check Sheet.**

## Mounting the Panniers

### Warning

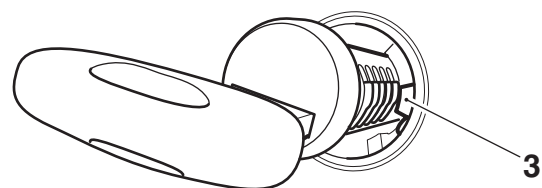
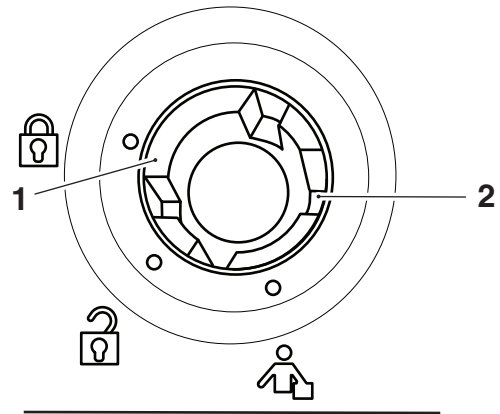
The two panniers fitted to this motorcycle are designed to be fitted as a pair. Never ride the motorcycle with only one pannier installed. Riding the motorcycle with one pannier installed may cause the motorcycle to become unstable leading to loss of motorcycle control and an accident.

## Lock Barrel Fitment

- Fit the ignition key into the lock barrel lock supplied with the motorcycle when new.

#### Note:

- The lock barrel will only fit one way.**
- Align the locking device on the lock barrel to the slot in the lock housing in the top box, as indicated in the illustration below.



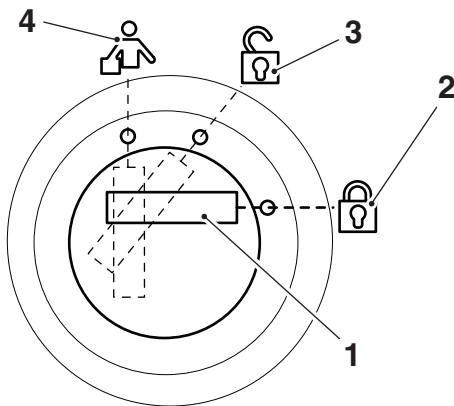
- Slot
- Housing
- Locking device

- Push the barrel into position in the top box until it clicks into place.
- Check the operation of the barrel.

## To Install Each Pannier

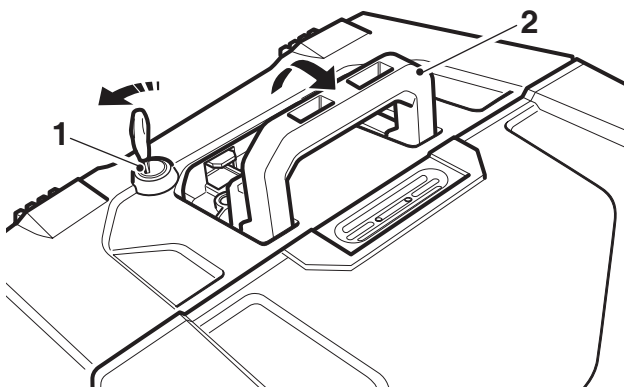
### Note:

- The same procedure can be followed to remove and mount the left hand or the right hand panniers.
- The pannier is marked in three positions around the lock barrel. To lock, open or release the panniers, the key slot must align with the corresponding symbols around the barrel as shown.



1. Key slot (shown in the LOCK position)
2. Lock position symbol
3. Unlock position symbol
4. Release position symbol

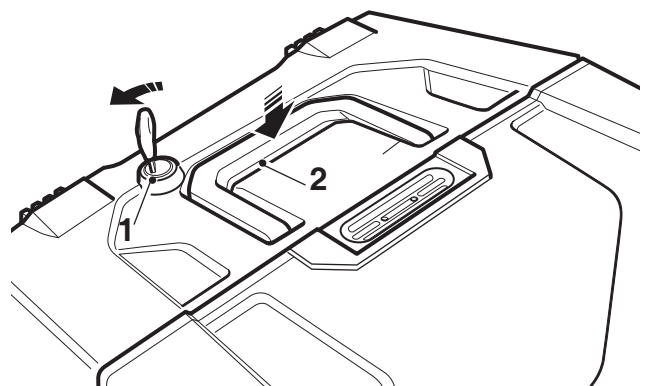
1. Insert the key into the lock. Turn the key to the RELEASE position and lift the carrying handle to its fully raised position.



1. Lock
2. Carrying handle

### Note:

- Ensure that the third mount rubber boots locate into the cups moulded into the front of the pannier.
2. Fit the pannier hooks to the mounting points in the following order:
    - the front hook;
    - the third mount;
    - the rear hook.
  3. Turn the key to the RELEASE position, press down the carrying handle to its fully closed position. Release the key and confirm the carrying handle remains locked in its aperture as shown below.

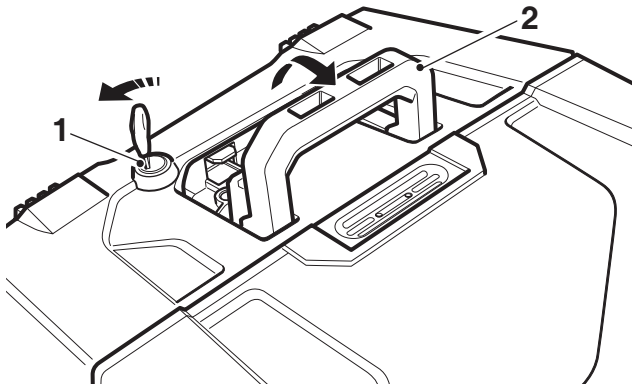


1. Key
  2. Carrying handle (locked position)
4. Turn the key to the LOCK position and remove it.

## To Remove Each Pannier

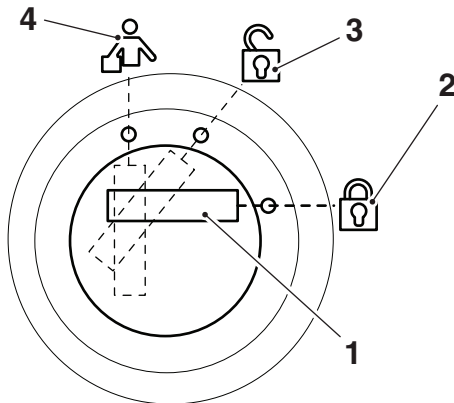
### Note:

- The same procedure can be followed to remove and mount the left hand or the right hand panniers.
1. To unlock and remove the pannier, turn the key to the RELEASE position and lift the carrying handle to its fully raised position. Lift the pannier free from its mountings.



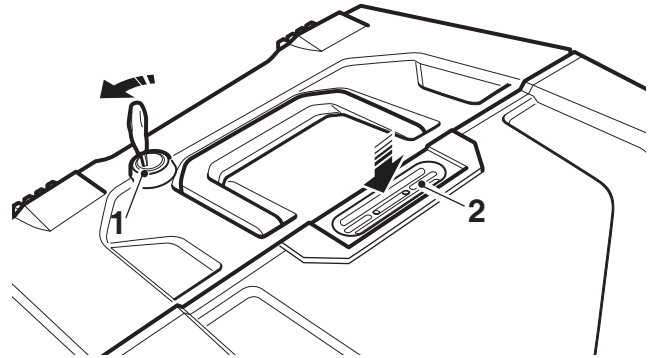
1. Lock
2. Carrying handle

## Pannier Operation



1. Key slot (shown in the LOCK position)
2. Lock position symbol
3. Unlock position symbol
4. Release position symbol

1. To unlock and open the pannier, insert the key and turn it to the UNLOCK position, then press down on the latch plate. The lid can then be opened.



1. Lock
2. Latch plate



## Caution

The pannier lid has two latch positions; the first latch position acts as a safety catch. Always ensure the pannier lid is fully closed on to the second latch position, as the pannier will not fully seal on the first latch position. Riding the motorcycle with the pannier lid in this position may allow water or dust ingress into the pannier, causing damage to the pannier contents.

### Note:

- Due to the effective nature of the pannier lid seal, reasonable force may be required to close the lid to the second latch position.
2. To close and lock the pannier, close the lid until the second 'click' is heard. Turn the key to the LOCK position and remove it.

 **Warning**

The maximum safe load for each pannier is 10 kg (22 lbs). Never exceed this loading limit as this may cause the motorcycle to become unstable leading to loss of motorcycle control and an accident.

 **Warning**

In all cases, loads must be evenly distributed on both sides of the motorcycle. Uneven loading may cause instability, loss of motorcycle control and an accident.

 **Warning**

After fitting the accessory kit the motorcycle will exhibit new handling characteristics. Operate the motorcycle in a safe area free from traffic to gain familiarity with any new characteristics. Operation of the motorcycle when not familiar with any new handling characteristics may result in loss of motorcycle control and an accident.

 **Warning**

If, after fitting this accessory kit, you have any doubt about the performance of any aspect of the motorcycle, contact an authorised Triumph dealer and do not ride the motorcycle until the authorised dealer has declared it fit for use. Riding a motorcycle when there is any doubt as to any aspect of the performance of the motorcycle may result in loss of motorcycle control and an accident.

 **Warning**

Never ride an accessory-equipped motorcycle at speeds above 80 mph (130 km/h).

The presence of accessories will cause changes in the stability and handling of the motorcycle. Failure to allow for changes in motorcycle stability may result in loss of motorcycle control and an accident.

Remember that the 80 mph (130 km/h) limit will be reduced by the fitting of non-approved accessories, incorrect loading, worn tyres, overall motorcycle condition and poor road or weather conditions.

 **Warning**

The motorcycle must not be operated above the legal road speed limit except in closed-course conditions.

 **Warning**

Only operate this Triumph motorcycle at high speed in closed-course, on-road competition or on closed-course racetracks. High-speed operation should only be attempted by riders who have been instructed in the techniques necessary for high-speed riding and are familiar with the motorcycle's characteristics in all conditions.

High-speed operation in any other circumstances is dangerous and may result in loss of motorcycle control and an accident.