

Fitting Instructions:

Tiger Sport

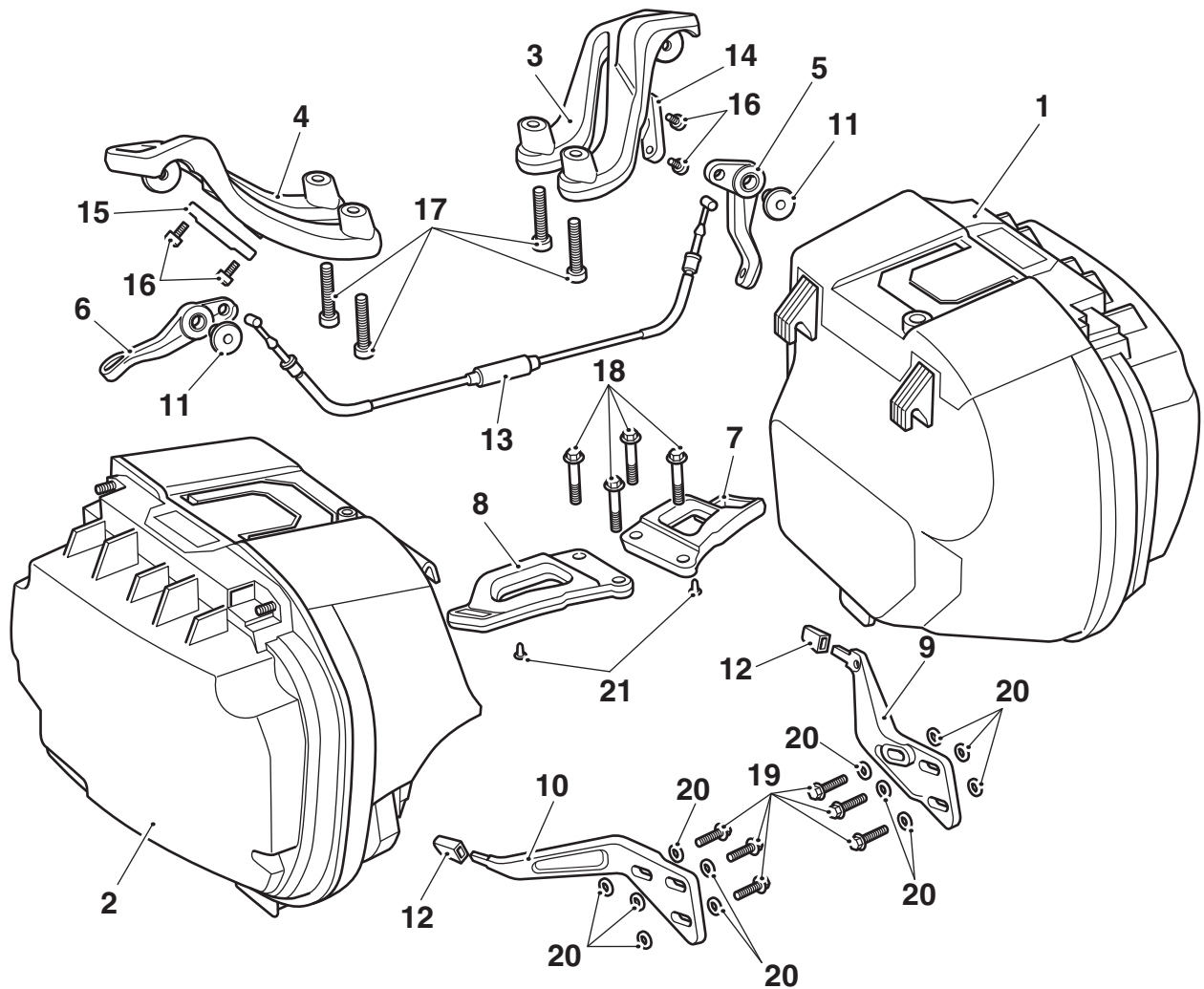
A9508074, A9508081, A9508078, A9508095

Thank you for choosing this Triumph genuine accessory kit. This accessory kit is the product of Triumph's use of proven engineering, exhaustive testing, and continuous striving for superior reliability, safety and performance.

Completely read all of these instructions before commencing the installation of the accessory kit in order to become thoroughly familiar with the kit's features and the installation process.

These instructions should be considered a permanent part of your accessory kit, and should remain with it even if your accessory-equipped motorcycle is subsequently sold.

A9508078, A9508095

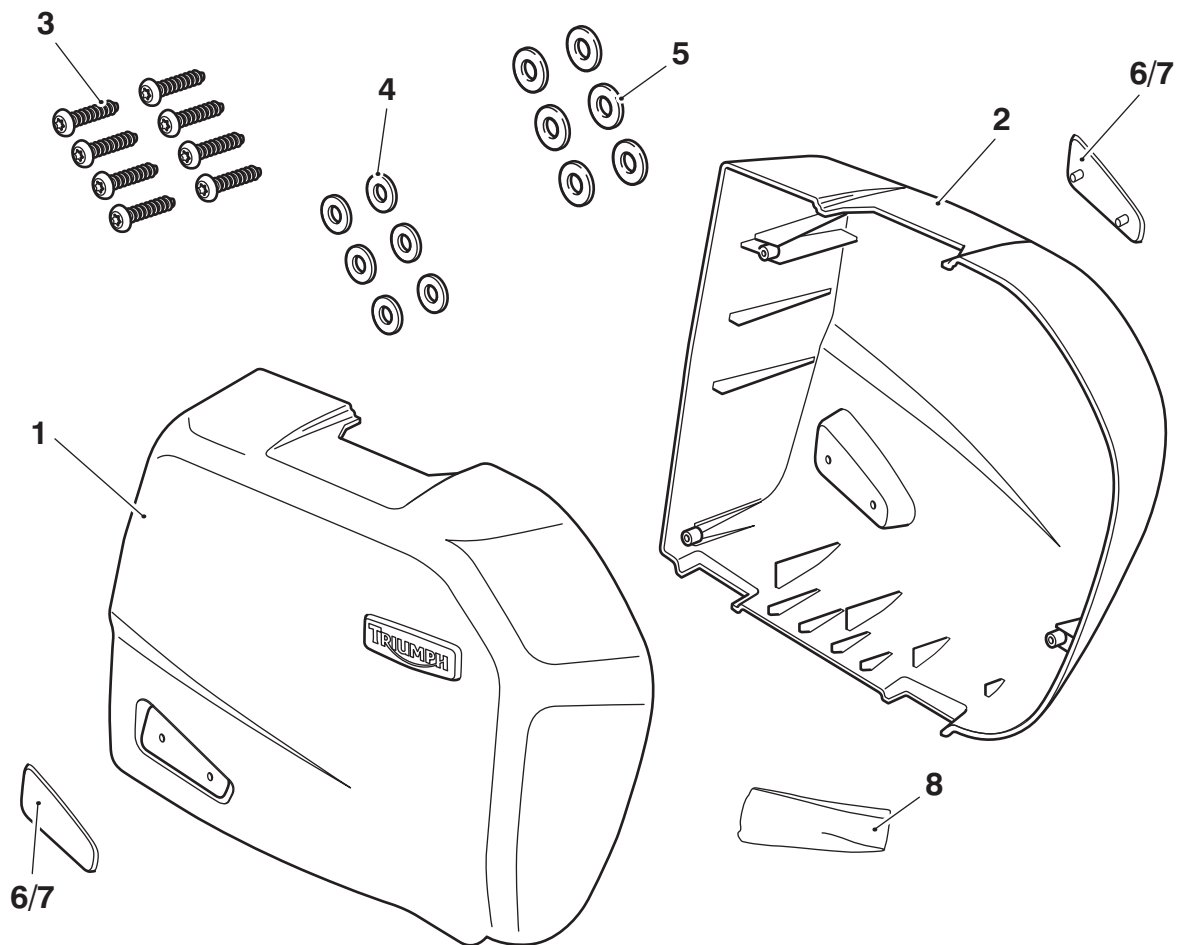


T1562

Parts Supplied:

1.	Pannier assembly, left-hand	1 off	12.	Rubber boot	2 off
2.	Pannier assembly, right-hand	1 off	13.	Cable assembly	1 off
3.	Pannier rear mount, left-hand	1 off	14.	Cable clamp, left-hand	1 off
4.	Pannier rear mount, right-hand	1 off	15.	Cable clamp, right-hand	1 off
5.	Adjusting lever, left-hand	1 off	16.	Screw, M5 x 10 mm cap head	4 off
6.	Adjusting lever, right-hand	1 off	17.	Screw, M8 x 40 mm cap head	4 off
7.	Pannier front mount, left-hand	1 off	18.	Screw, M8 x 30 mm hex head	4 off
8.	Pannier front mount, right-hand	1 off	19.	Screw, M6 x 20 mm hex head	6 off
9.	Pannier third mount, left-hand	1 off	20.	Washer, M6	12 off
10.	Pannier third mount, right-hand	1 off	21.	Rubber plug	2 off
11.	Shouldered bolt	2 off			

A9508074, A9508081



Parts Supplied:

1.	Pannier cover, right-hand	1 off	5.	Washer, rubber	6 off
2.	Pannier cover, left-hand	1 off	6.	Reflector, red, tapered	2 off
3.	Screw, M4 x 18 mm self tapping	8 off	7.	Reflector, amber, tapered	2 off
4.	Washer	6 off	8.	Cleaning wipe	1 off



Warning

This accessory kit is designed for use on Triumph Tiger Sport motorcycles only and should not be fitted to any other Triumph model or to any other manufacturer's motorcycle. Fitting this accessory kit to any other Triumph model or to any other manufacturer's motorcycle will affect the performance, stability and handling of the motorcycle. This may affect the rider's ability to control the motorcycle and could cause an accident.



Warning

Always have Triumph approved parts, accessories and conversions fitted by a trained technician of an authorised Triumph dealer. The fitment of parts, accessories and conversions by a technician who is not of an authorised Triumph dealer may affect the handling, stability or other aspects of the motorcycle's operation which may result in loss of motorcycle control and an accident.



Warning

Throughout this operation, ensure that the motorcycle is stabilised and adequately supported to prevent risk of injury from the motorcycle falling.



Warning

A torque wrench of known accurate calibration must be used when fitting this accessory kit. Failure to tighten any of the fasteners to the correct torque specification may affect motorcycle performance, handling and stability. This may result in loss of motorcycle control and an accident.

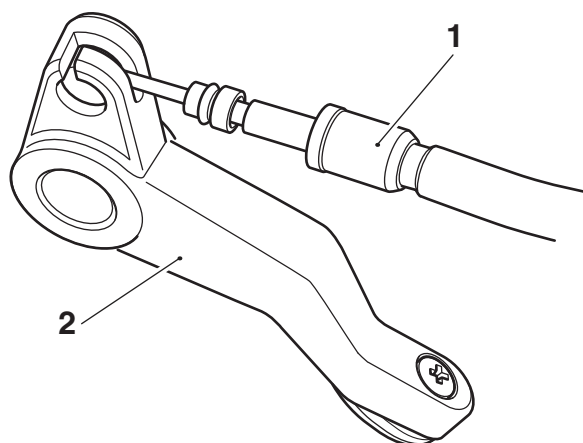
Installation of the Mounting Brackets

1. Position the motorcycle on a paddock stand.
2. Remove the seat, as described in the owner's handbook.

Installation of the Rear Pannier Mounts

Note:

- **When fitting the pannier cable ensure it is orientated so that the text marking on the cable is facing the front of the motorcycle, and therefore, cannot be seen from the rear of the motorcycle.**
3. Fit the pannier cable into the left-hand adjusting lever, as shown.

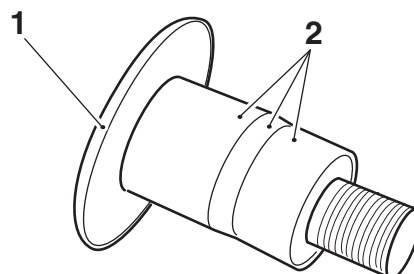


T41009-4

1. Pannier cable

2. Adjusting lever

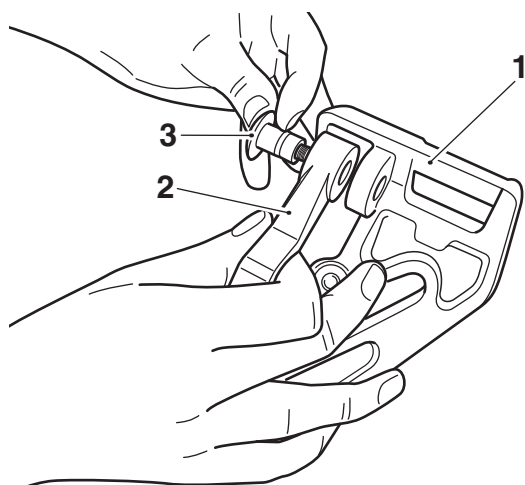
4. Collect the shouldered bolt from the kit. Apply 'Castrol High Temperature Grease' to the areas of the shouldered bolt shown below.



1. Shouldered bolt

2. Grease application areas

5. Fit the left-hand adjusting lever to the left-hand rear mount bracket, in the orientation shown, and secure with a shouldered bolt from the kit. Tighten the bolt to **22 Nm**.



- T1564
1. Rear mount bracket
 2. Adjusting lever
 3. Shoulder bolt



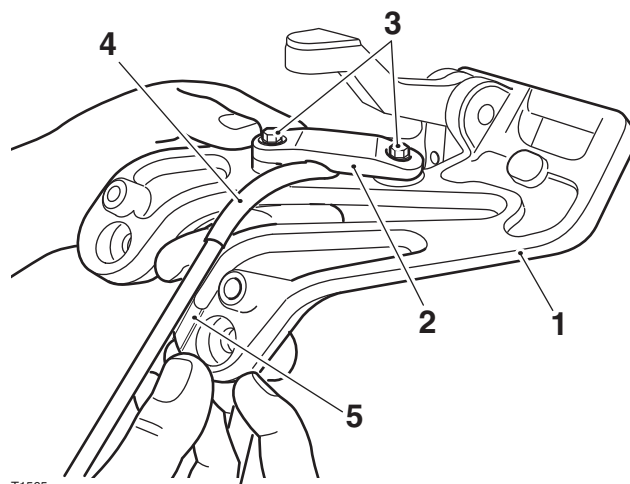
Caution

When securing the cable clamp to the rear mount bracket with the M5 x 10 mm screws do not exceed the torque value specified. Over tightening the screws will cause damage to the cable clamp and prevent secure retention of the cable.

Note:

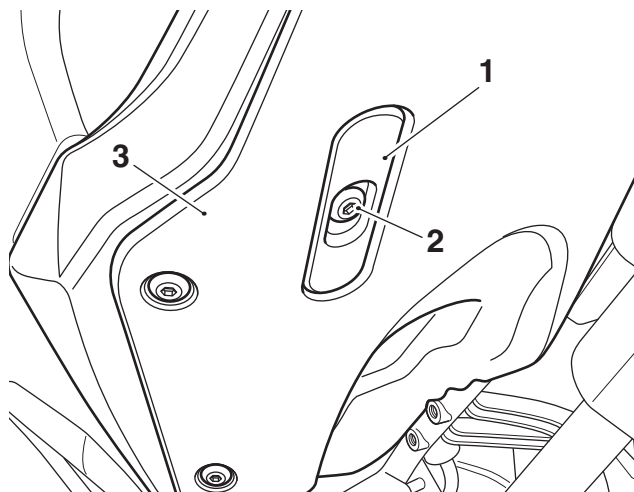
- Ensure the routing and orientation of the cable is correct before securing in position with the cable clamp.

6. Route the cable along the recess of the rear mount bracket, as shown below and fit the left-hand cable clamp. Use two M5 x 10 mm screws from the kit to secure the cable clamp and retain the cable to the rear mount bracket. Tighten the screws to **5 Nm**.



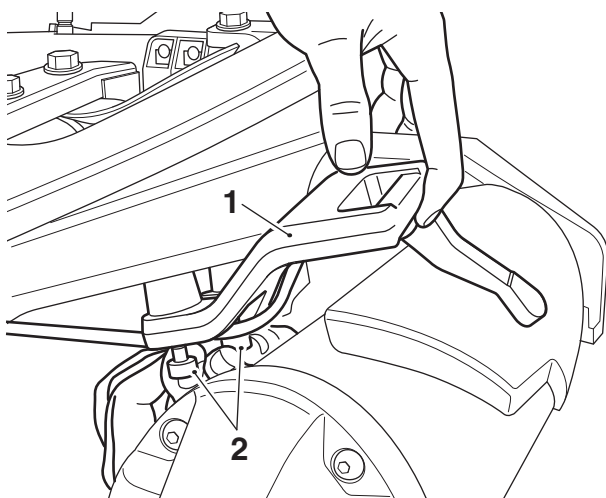
- T1565
1. Rear mount
 2. Cable clamp, left-hand
 3. Screw, M5 x 10 mm
 4. Pannier cable
 5. Recess, rear mount

7. Repeat steps 3 to 6 for the right-hand side rear pannier mount.
8. Remove the left-hand and right-hand blanking covers from the rear mudguard to expose the rear pannier mount fixing positions. Retain the blanking covers and fixings for use if the motorcycle is returned to its original condition.



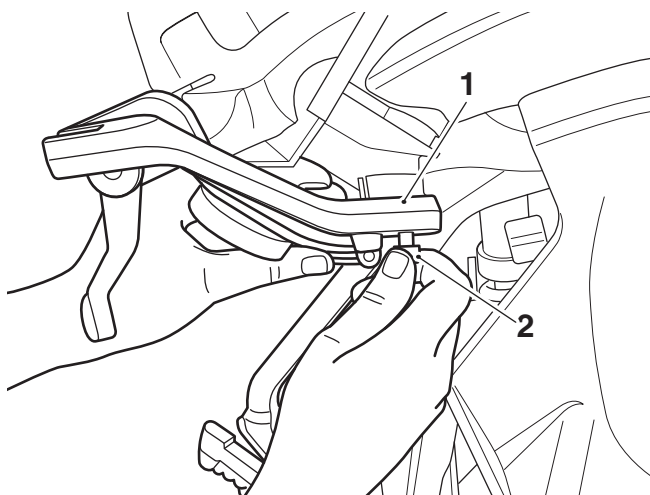
- T1566
1. Blanking cover
 2. Fixing
 3. Rear mudguard

9. Fit the right-hand rear pannier mount to the motorcycle, in the orientation shown, and secure with the M8 x 40 mm cap head screws provided. Tighten the screws to **25 Nm**.



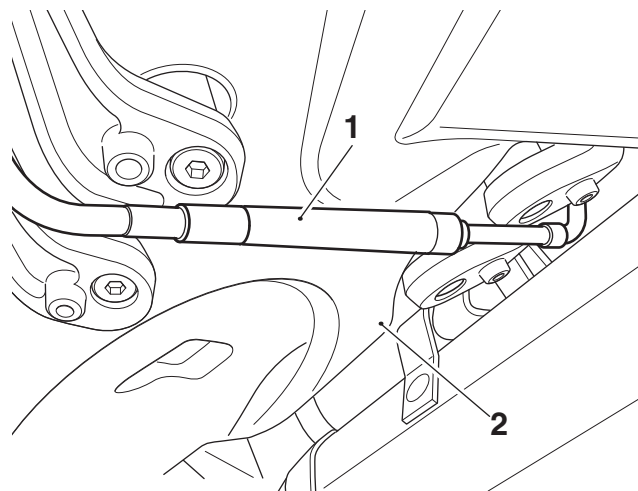
1. Rear pannier mount, right-hand
2. Screw, M8 x 40 mm

10. Fit the left-hand rear pannier mount to the motorcycle, in the orientation shown, and secure with the M8 x 40 mm cap head screws provided. Tighten the screws to **25 Nm**.



1. Rear pannier mount, left-hand
2. Screw, M8 x 40 mm

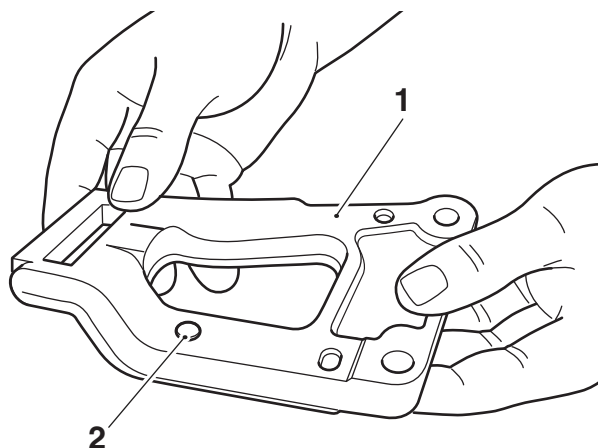
11. The pannier cable, located under the rear number plate hanger, is self supporting and should not be retained to any part of the motorcycle.



1. Pannier cable
2. Rear number plate hanger

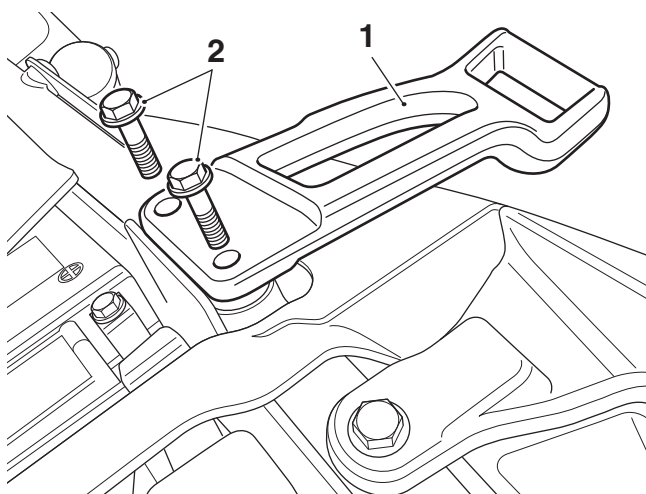
Installation of the Front Pannier Mounts

12. Fit the rubber plugs, provided in the kit, to the underside of the front pannier mounts.



1. Front pannier mount, right-hand shown
2. Rubber plug

13. Fit the left-hand and right-hand front pannier mounts to the top of the motorcycle frame and secure with the M8 x 30 mm screws provided. Tighten the screws to **25 Nm**.

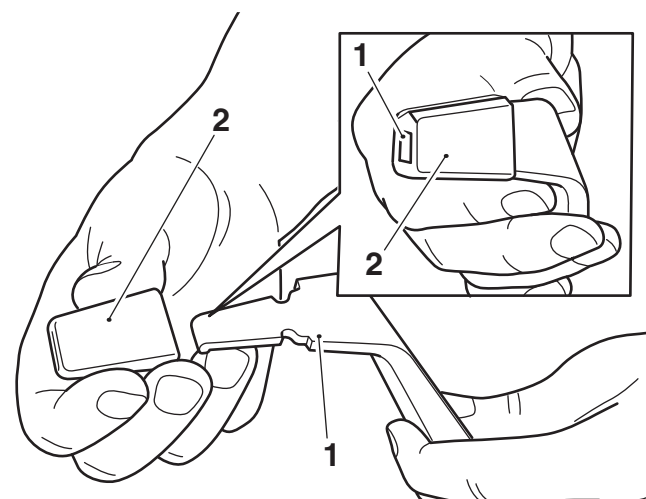


1. Front mount, right-hand shown
2. Screw, M8 x 30 mm

Installation of the Third Mounts

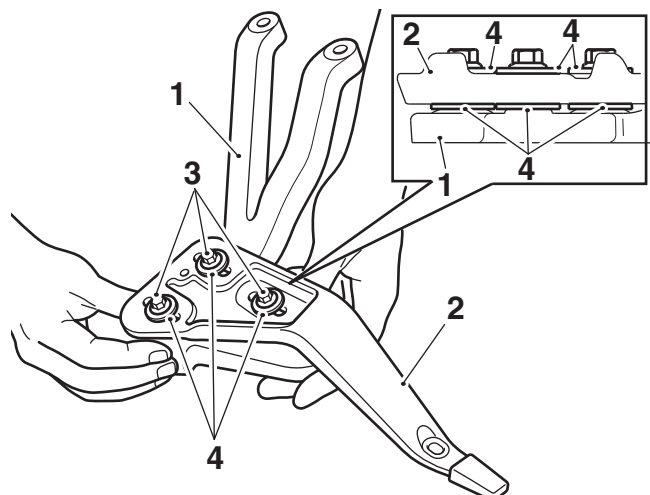
Note:

- The tapered edge of the rubber boot must face upwards of the third mount.
14. Fit the rubber covers to the third mounts. When correctly fitted the tip of the third mount should be visible through the rubber cover.



1. Third mount
2. Rubber boot

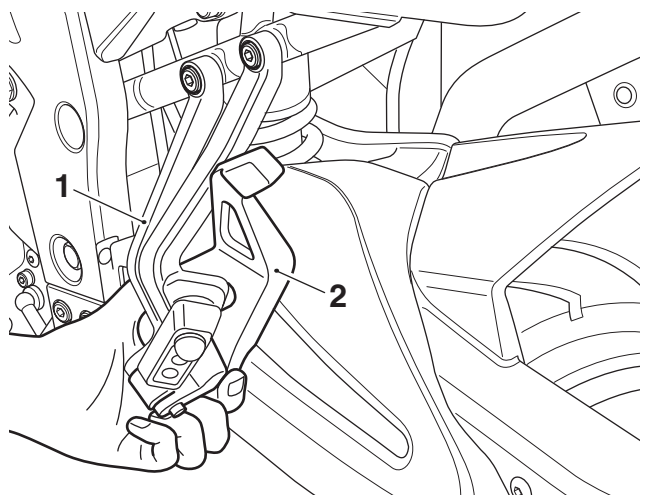
15. Fit three M6 x 20 mm screws and M6 washers from the kit into the right-hand third mount. Fit three additional M6 washers from the kit to the underside of the third mount and secure the mount to the footrest bracket, in the orientation shown. Do not fully tighten the screws at this stage.



Pillion Footrest Bracket Removed for Clarity

1. Pillion footrest bracket
2. Third mount, right-hand
3. Screw, M6 x 20 mm
4. Washer, M6

16. Repeat step 15 for the left-hand third mount. Ensure the left-hand third mount is in the orientation shown below. Do not fully tighten the screws at this stage.



1. Pillion footrest bracket
2. Third mount, left-hand

Pannier Cable Adjustment

Check



Warning

The two panniers are linked by a cable to enhance stability.

This cable allows a small amount of sideways pannier movement, independently of the motorcycle.

Riding the motorcycle with panniers fitted and the cable assembly removed or incorrectly adjusted may cause the motorcycle to become unstable leading to loss of control and an accident.

The pannier link cable must be checked and if necessary adjusted:

- in accordance with the scheduled maintenance requirements;
- if the pannier link cable has been removed/replaced;
- if the pannier mounts have been removed/replaced;
- if the rear footrest hangers have been removed/replaced;
- if new panniers have been fitted.

Adjustment



Warning

Cable adjustment must be carried out with the panniers empty.

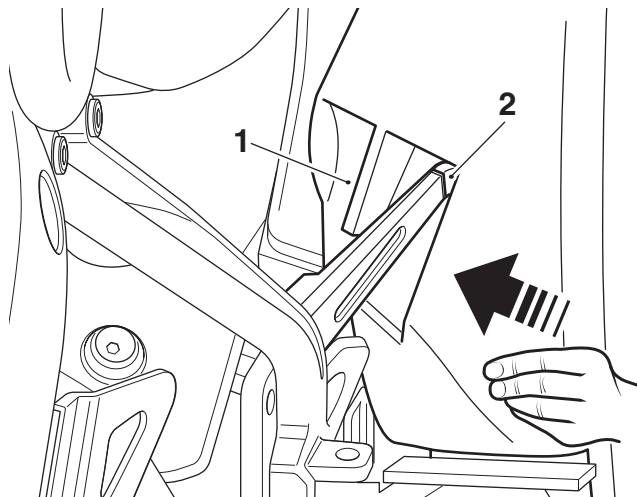
Adjustment of the pannier cable with the panniers loaded will cause an incorrect adjustment to be set.

Riding the motorcycle with panniers fitted and the cable incorrectly adjusted may cause the motorcycle to become unstable leading to loss of control and an accident.

1. Check that the motorcycle is in an upright position on a paddock stand.
2. Fit the panniers, as described in Mounting the Panniers on page 11.
3. Ensure the panniers are empty.

Third Mount Adjustment

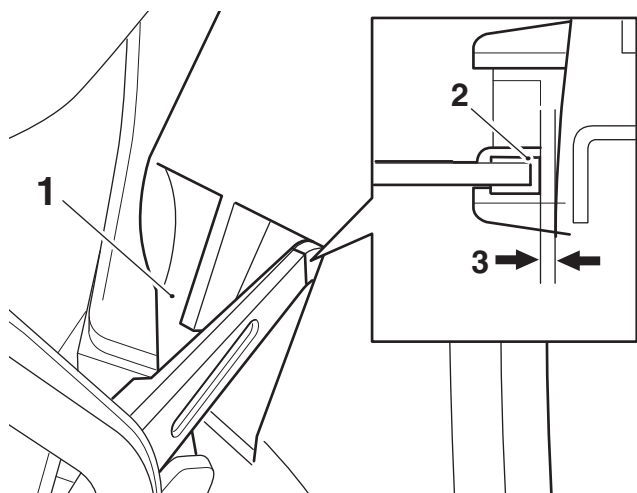
1. Push the left-hand pannier towards the centre of the motorcycle until the outer edge of the locating cup comes into contact with the third mount rubber boot.



1. Pannier

2. Third mount rubber boot

2. Adjust the left-hand third mount horizontally forwards and rearwards until there is a small visible gap between the rear of the rubber boot and the pannier. Also adjust the third mount vertically up until the top of the rubber boot rests against the top of the pannier locating cup.



Inset View from Below Pannier

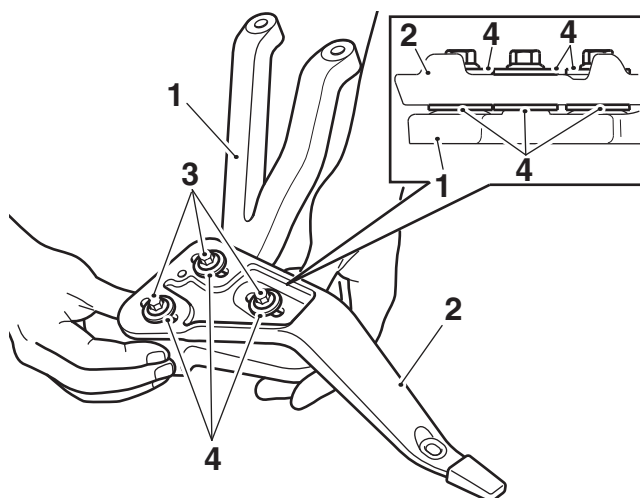
1. Pannier

2. Third mount rubber boot

3. Visible gap

3. Tighten the left-hand third mount fixing screws to **9 Nm**.
4. Repeat steps 1 and 2 for the right-hand side.

- Remove the right-hand pillion footrest bracket and tighten the third mount fixings to **9 Nm**.

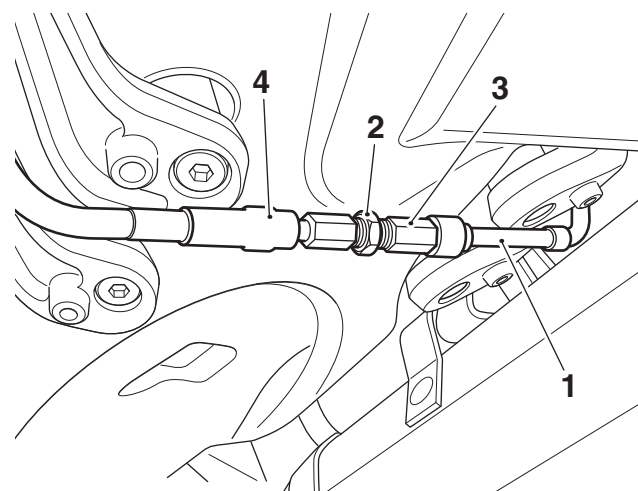


- Pillion footrest bracket
- Third mount
- Screw
- Washer

- Refit the right-hand pillion footrest bracket and tighten to **27 Nm**.

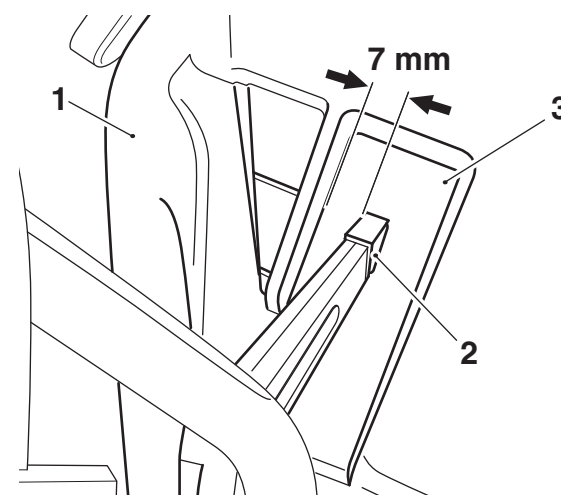
Cable Adjustment

- Pull back the rubber boot on the pannier cable to expose the cable adjustment arrangement, as shown.



- Pannier cable
- Lock nut
- Cable adjuster
- Rubber boot

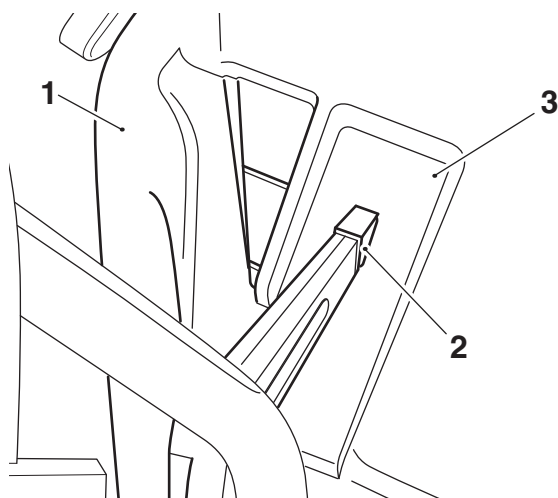
- Loosen the lock nut on the adjuster cable.
- Turn the cable adjuster until both the left-hand and right-hand third mounts are positioned 7 mm from the inner edge of the pannier locating cups, as shown.



- Pannier (left-hand shown)
- Third mount
- Locating cup

- Hold the cable adjuster and tighten the lock nut to **2.5 Nm**.

5. Allow the panniers to rest in their adjusted position as shown below.



1. Pannier
2. Third mount rubber boot
3. Locating cup

6. Check that the panniers are free to move smoothly and are unobstructed. Rectify if necessary.



Warning

Do not ride the motorcycle with the third mounts removed or incorrectly adjusted.

Riding the motorcycle with the third mounts removed or incorrectly adjusted may cause the motorcycle to become unstable leading to loss of control and an accident.

7. Remove the left-hand and right-hand seat infill mouldings, as described in the service manual.
8. Refit the seat, as described in the owner's handbook.
9. Remove the motorcycle from the paddock stand.

Note:

- **Re-check the pannier cable adjustment and operation at each service as recommended in the 'Maintenance and Adjustment' section of the owner's handbook.**

Pannier Covers A9508074



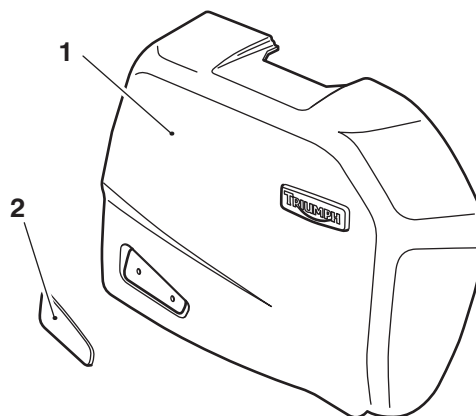
Caution

Care must be taken when working on the panniers. Damage to the pannier surfaces may result from inadequate care while fitting the painted panels.

1. Lay the left-hand pannier on a flat, clean and soft surface.

Note:

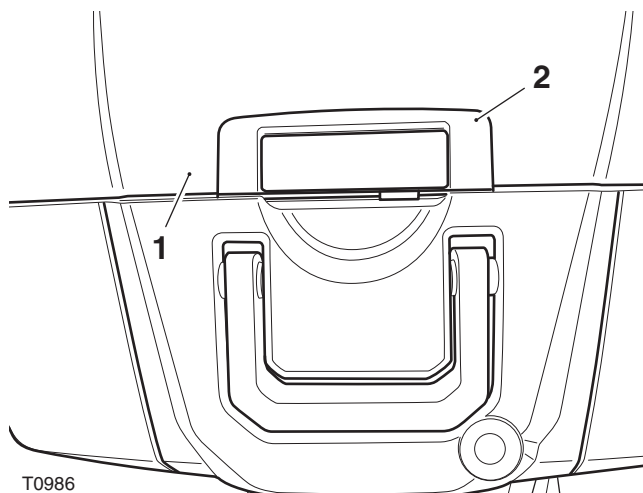
- **Read the warning notices printed on the cleaning wipe packet in the fitting kit.**
 - **The surface to which the reflector is to be affixed must be clean and dry to ensure that the adhesive has a sound base to adhere to. Use the cleaning wipe supplied for this purpose.**
 - **The red reflector is for all markets except Japan.**
 - **The amber reflector is for Japan only.**
2. Recover the correct reflector from the kit and peel off the backing strip.
3. Use the locating pins to orientate the reflector and then apply firm and even pressure to ensure a good bond is achieved.



T1845_1

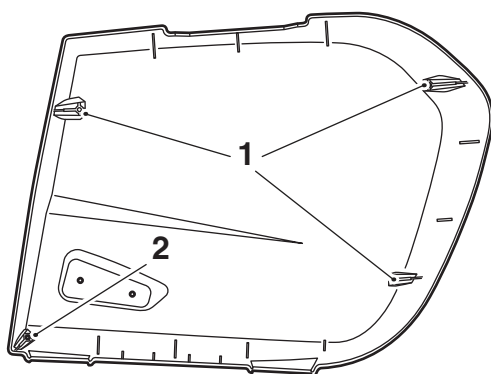
1. Pannier cover
2. Reflector

- Retrieve the left-hand painted panel from the kit. Fit the panel to the pannier lid ensuring that it fits inside the latch plate surround.



- 1. Painted panel, left-hand**
- 2. Latch plate surround**

- Retrieve four of the self-tapping screws, three metal washers and three rubber washers from the kit. Fit the metal washers to three of the screws, then fit the three rubber washers to the same screws.
- Carefully open the pannier, ensuring that the painted cover remains tight to the lid and will rest on the clean soft surface when fully open.
- Fit the self-tapping screws to the locations indicated below and tighten to **1.5 Nm**.



- 1. Screws with washers**
- 2. Screw without washers**

- Repeat steps 1 to 7 for the right-hand pannier.

Mounting the Panniers



Warning

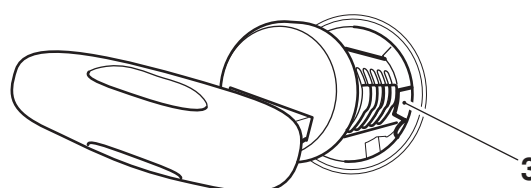
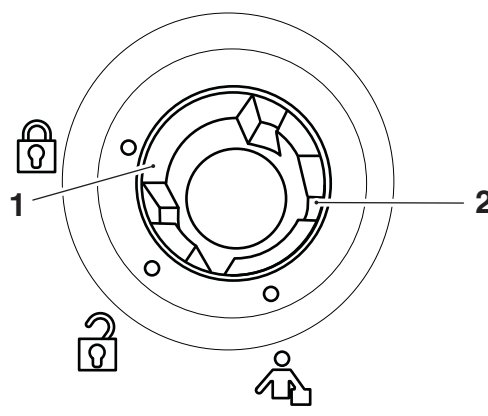
The two panniers fitted to this motorcycle are designed to be fitted as a pair. Never ride the motorcycle with only one pannier installed. Riding the motorcycle with one pannier installed may cause the motorcycle to become unstable leading to loss of control and an accident.

Lock Barrel Fitment

- Fit the ignition key into the lock barrel lock supplied with the motorcycle when new.

Note:

- The lock barrel will only fit one way.**
- Align the locking device on the lock barrel to the slot in the lock housing in the top box, as indicated in the illustration below.



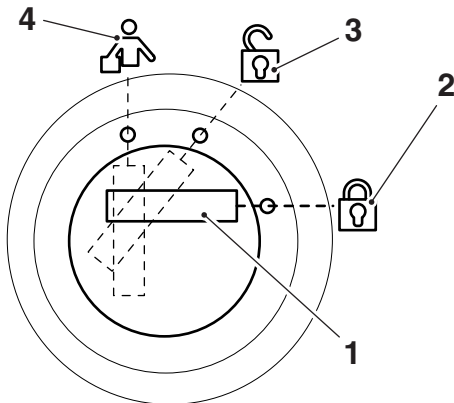
- 1. Slot**
- 2. Housing**
- 3. Locking device**

- Push the barrel into position in the top box until it clicks into place.
- Check the operation of the barrel.

To Install Each Pannier

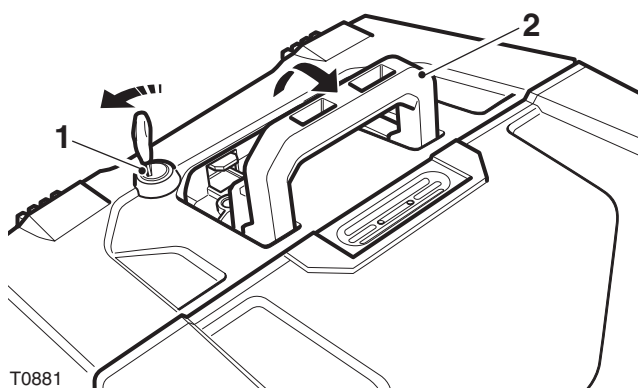
Note:

- The same procedure can be followed to remove and mount the left-hand or the right-hand panniers.
- The pannier is marked in three positions around the lock barrel. To lock, open or release the panniers, the key slot must align with the corresponding symbols around the barrel as shown.



1. Key slot (shown in the LOCK position)
2. Lock position symbol
3. Unlock position symbol
4. Release position symbol

1. Insert the key into the lock. Turn the key to the RELEASE position and lift the carrying handle to its fully raised position.

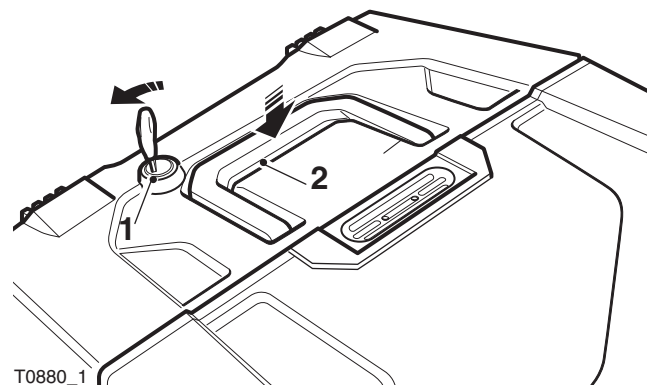


1. Lock
2. Carrying handle

Note:

- Ensure that the third mount rubber boots locate into the cups moulded into the front of the pannier.

2. Fit the pannier hooks to the mounting points in the following order:
 - the front hook;
 - the third mount;
 - the rear hook.
3. Turn the key to the RELEASE position, press down the carrying handle to its fully closed position. Release the key and confirm the carrying handle remains locked in its aperture as shown below.



1. Key
2. Carrying handle (locked position)

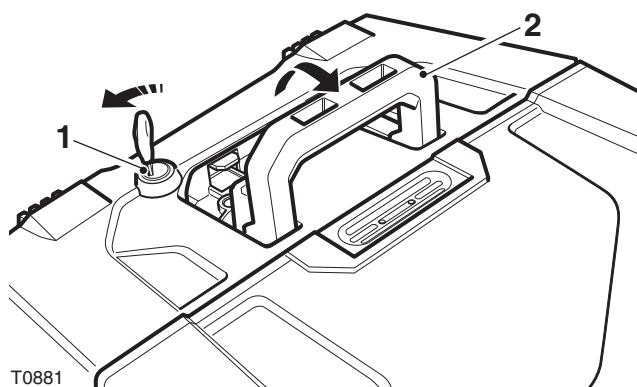
4. Turn the key to the LOCK position and remove it.

To Remove Each Pannier

Note:

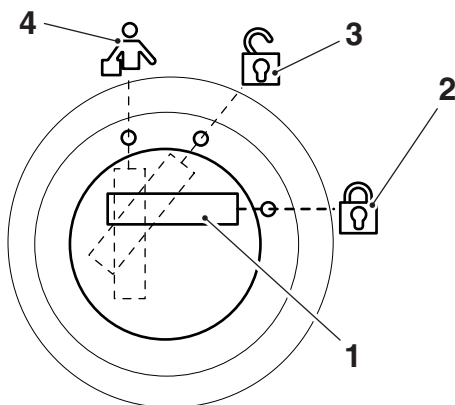
- The same procedure can be followed to remove and mount the left-hand or the right-hand panniers.

1. To unlock and remove the pannier, turn the key to the RELEASE position and lift the carrying handle to its fully raised position. Lift the pannier free from its mountings.



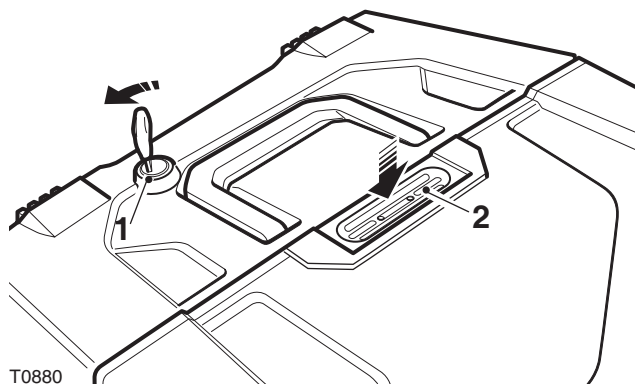
1. Lock
2. Carrying handle

Pannier Operation



1. Key slot (shown in the LOCK position)
2. Lock position symbol
3. Unlock position symbol
4. Release position symbol

1. To unlock and open the pannier, insert the key and turn it to the UNLOCK position, then press down on the latch plate. The lid can then be opened.



1. Lock
2. Latch plate



Caution

The pannier lid has two latch positions; the first latch position acts as a safety catch. Always ensure the pannier lid is fully closed on to the second latch position, as the pannier will not fully seal on the first latch position. Riding the motorcycle with the pannier lid in this position may allow water or dust ingress into the pannier, causing damage to the pannier contents.

Note:

- Due to the effective nature of the pannier lid seal, reasonable force may be required to close the lid to the second latch position.
2. To close and lock the pannier, close the lid until the second 'click' is heard. Turn the key to the LOCK position and remove it.



Warning

The maximum safe load for each pannier is 10 kg (22 lbs). Never exceed this loading limit as this may cause the motorcycle to become unstable leading to loss of control and an accident.



Warning

In all cases, loads must be evenly distributed on both sides of the motorcycle. Uneven loading may cause instability, loss of control and an accident.



Warning

After fitting the accessory kit the motorcycle will exhibit new handling characteristics. Operate the motorcycle in a safe area free from traffic to gain familiarity with any new handling characteristics. Operation of the motorcycle when not familiar with any new handling characteristics may result in loss of motorcycle control and an accident.



Warning

Never ride an accessory-equipped motorcycle (including those fitted with Triumph approved windscreens and luggage systems) at speeds above 80 mph (130 km/h).

The presence of accessories such as windscreens and luggage systems will cause changes in the stability and handling of the motorcycle. Failure to allow for changes in motorcycle stability may lead to loss of control or an accident.

Remember that the 80 mph (130 km/h) limit will be reduced by the fitting of non-approved accessories, incorrect loading, worn tyres, overall motorcycle condition and poor road or weather conditions.



Warning

This motorcycle must not be operated above the legal road speed limit except in authorised closed course conditions.



Warning

Only operate this Triumph motorcycle at high speed in closed course, on-road competition or on closed course racetracks. High speed operation should only be attempted by riders who have been instructed in the techniques necessary for high speed riding and are familiar with the motorcycle's characteristics in all conditions.

High speed operation in any other circumstances is dangerous and will lead to loss of motorcycle control and an accident.