



Accessory Fitting Instructions

Thank you for choosing this Triumph genuine accessory kit. This accessory kit is the product of Triumph's use of proven engineering, exhaustive testing, and continuous striving for superior reliability, safety and performance.

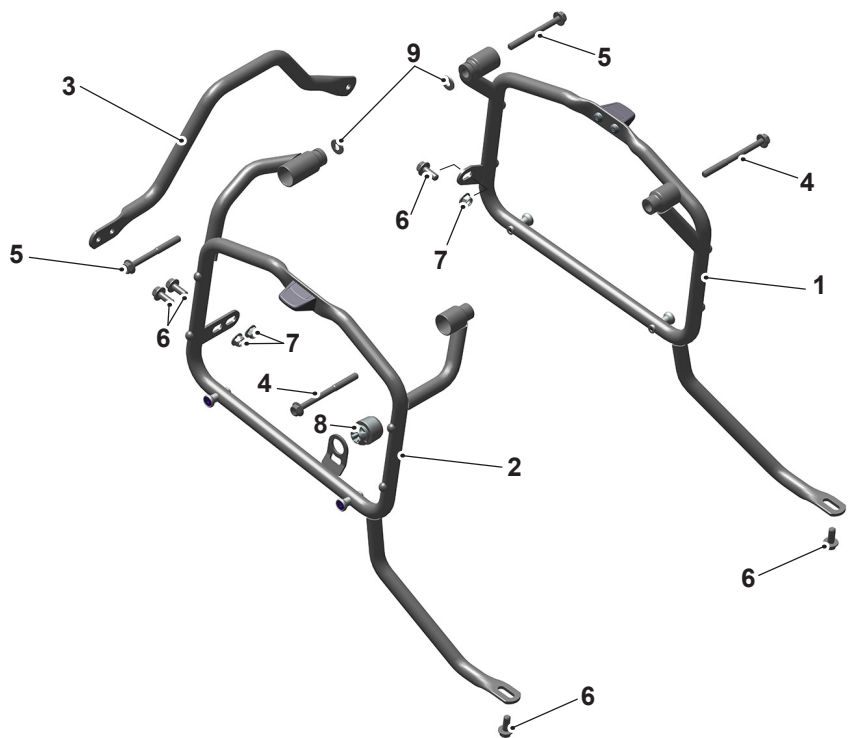
Completely read all of these instructions before commencing the installation of the accessory kit in order to become thoroughly familiar with the kit's features and the installation process.

These instructions should be considered a permanent part of your accessory kit, and should remain with it even if your accessory equipped motorcycle is subsequently sold.

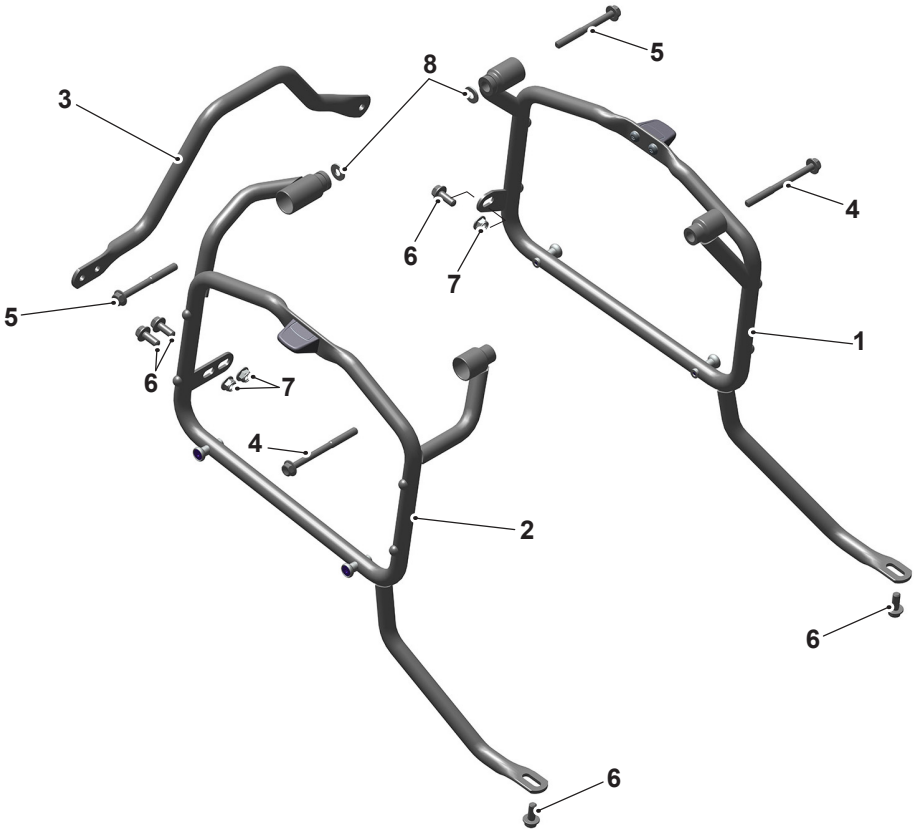
| Pannier Mounting Kit | |
|----------------------|---|
| Kit Number | Models |
| A9501288 | Tiger 900, Tiger 900 GT to VIN BM5542, Tiger 900 GT Pro to VIN BM5558, Tiger 900 GT (LRH), Tiger 900 GT Aragon Edition, Tiger 900 Rally, Tiger 900 Rally Pro to VIN BM8581, Tiger 900 Rally Aragon Edition, Tiger 850 Sport |
| A9508208 | Tiger 900 GT from VIN BP6441, Tiger 900 GT Pro from VIN BP5373, Tiger 900 Rally Pro from VIN BP4996 |

Parts supplied

A9501288



| | | | |
|--|-------|-------------------------|-------|
| 1. Mounting frame assembly, left hand | 1 off | 6. Fixing, M8 x 20 mm | 5 off |
| 2. Mounting frame assembly, right hand | 1 off | 7. Flanged lock nut, M8 | 3 off |
| 3. Rear link bar | 1 off | 8. Silencer rubber | 1 off |
| 4. Fixing, M8 x 95 mm | 2 off | 9. Washer, M8 | 2 off |
| 5. Fixing, M8 x 80 mm | 2 off | | |



| | | | |
|--|-------|-------------------------|-------|
| 1. Mounting frame assembly, left hand | 1 off | 5. Fixing, M8 x 80 mm | 2 off |
| 2. Mounting frame assembly, right hand | 1 off | 6. Fixing, M8 x 20 mm | 5 off |
| 3. Rear link bar | 1 off | 7. Flanged lock nut, M8 | 3 off |
| 4. Fixing, M8 x 95 mm | 2 off | 8. Washer, M8 | 2 off |

⚠ WARNING

Fit only genuine Triumph accessories to those models approved by Triumph as listed in the associated Triumph fitting instructions.

The accessory kits covered in this instruction are designed for use on specific models of Triumph motorcycle. The accessory kits and the models applicable are listed at the start of the instruction. They should never be fitted to any other Triumph model or to any other manufacturer's motorcycle.

Fitting an accessory kit to a Triumph model not listed, or to any other manufacturer's motorcycle, will affect the performance, stability and handling of the motorcycle.

Failure to follow the advice above may lead to loss of motorcycle control which could result in serious injury or death.

⚠ WARNING

Always have Triumph approved parts, accessories and conversions fitted by a competent person with the specialist knowledge and technical understanding of motorcycles, such as an authorised Triumph dealer.

The fitment of parts, accessories and conversions by a person without the specialist knowledge and technical understanding of motorcycles may affect the handling, stability or other aspects of the motorcycle's operation.

Failure to follow the advice above may lead to loss of motorcycle control which could result in serious injury or death.

⚠ WARNING

A torque wrench of known accurate calibration must be used when fitting this accessory kit.

Failure to tighten any of the fasteners to the correct torque specification may affect motorcycle performance, handling and stability.

Failure to follow the advice above may lead to loss of motorcycle control which could result in serious injury or death.

⚠ WARNING

Make sure the motorcycle is stabilised and adequately supported.

Do not support the motorcycle on any ancillary component, the exhaust system or any other non structural parts of the motorcycle frame.

A correctly supported motorcycle will help prevent it from falling.

An unstable motorcycle may fall resulting in motorcycle damage, serious injury or death.

NOTICE

Triumph offers a broad range of approved genuine accessories for your motorcycle.

We cannot therefore cover all possible equipment variations in these instructions. For removal and installation of Triumph Genuine Accessories, always refer to the instructions supplied with the respective accessory kit.

To obtain additional copies of any Triumph accessory instructions, visit www.triumphinstructions.com or contact your authorised Triumph dealer.

NOTICE

Lock nuts can be reused, providing resistance can be felt when the locking portion passes over the thread of the fixing or stud.

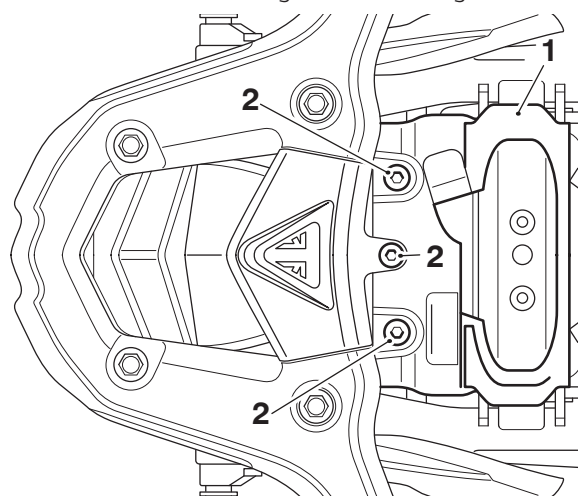
NOTICE

Always use the correct replacement lock nut as recommended in the Triumph parts catalogue.

1. Place the motorcycle on a paddock stand.
2. Remove the passenger and rider's seats as described in the Service Manual.

Tiger 900, Tiger 850 Sport Models Only

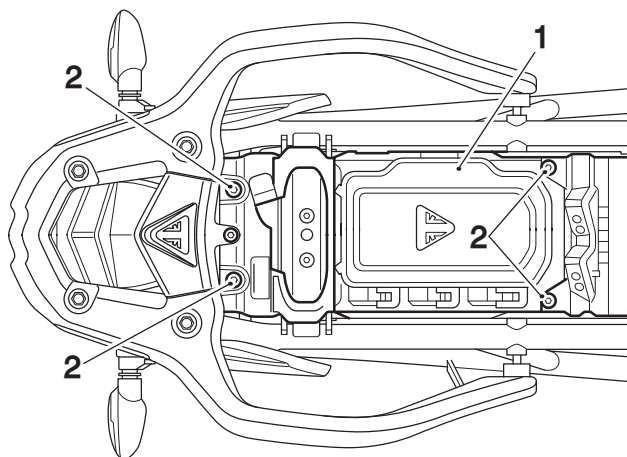
3. Remove the inner mudguard moulding.



1. Inner mudguard moulding
2. Fixings

Tiger 900 GT, Tiger 900 GT Pro, Tiger 900 GT (LRH), Tiger 900 GT Aragon Edition, Tiger 900 Rally, Tiger 900 Rally Pro, Tiger 900 Rally Aragon Edition Models Only

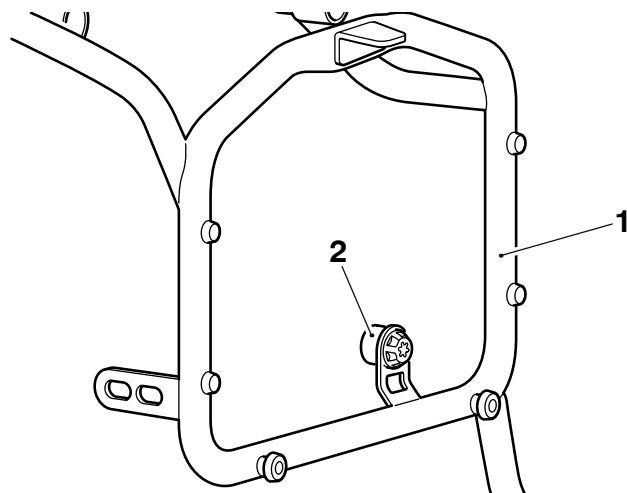
4. Remove the storage compartment.



1. Storage compartment
2. Fixings

A9501288 only

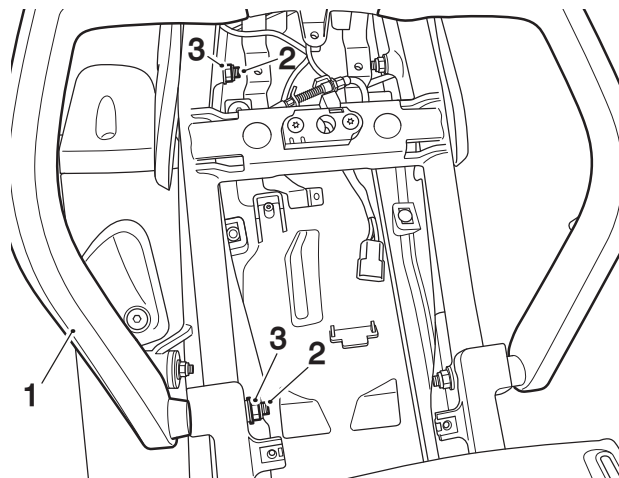
5. Fit the silencer rubber, from the kit, to the right hand pannier mounting frame in the orientation shown below.



1. Pannier mounting frame (right hand)
2. Silencer rubber

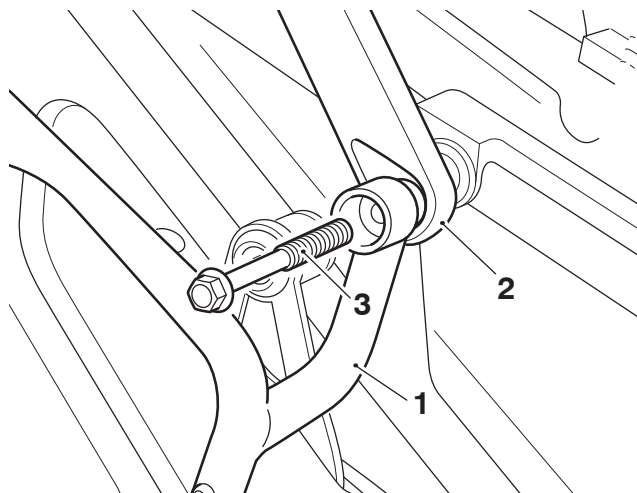
All Models

6. Remove the lock nuts and fixings from the right hand side grab rail and retain the lock nuts for reuse with the kit. Retain the fixings for reuse if the motorcycle is to be returned to its original condition.



1. Grab rail
2. Fixings
3. Lock nuts

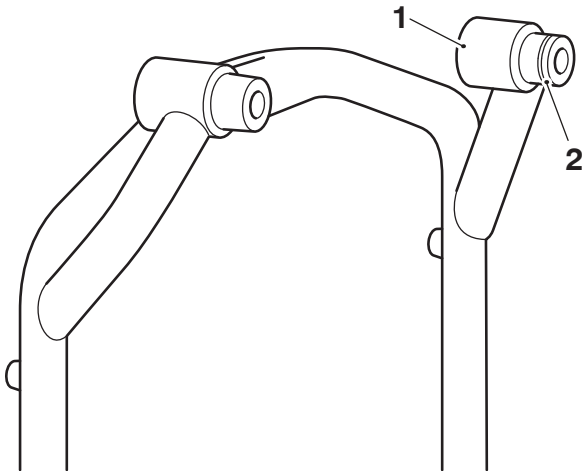
7. Align the right hand pannier mounting frame with the right hand side grab rail fixing positions. Fit an M8 x 95 mm fixing from the kit to the front pannier mounting frame fixing position and loosely fit an original lock nut to the fixing.



1. Pannier mounting frame
2. Grab rail
3. Fixing, M8 x 95 mm

NOTICE

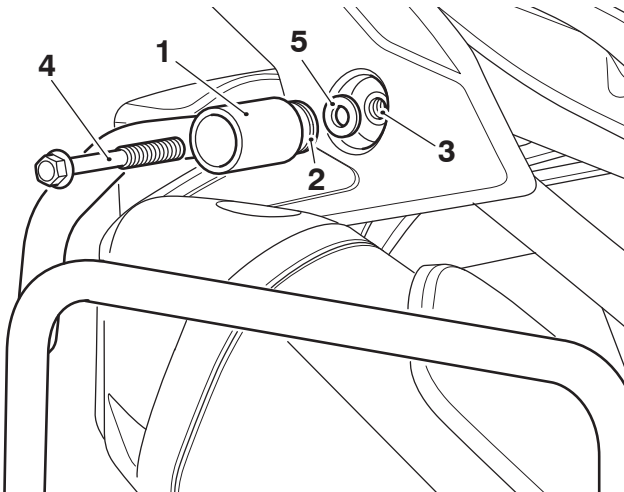
Pannier mounting frames with an identification groove on the rear mounting boss will require an M8 washer from the kit to be used during installation.



- 1. Pannier rail rear mounting boss
- 2. Identification groove

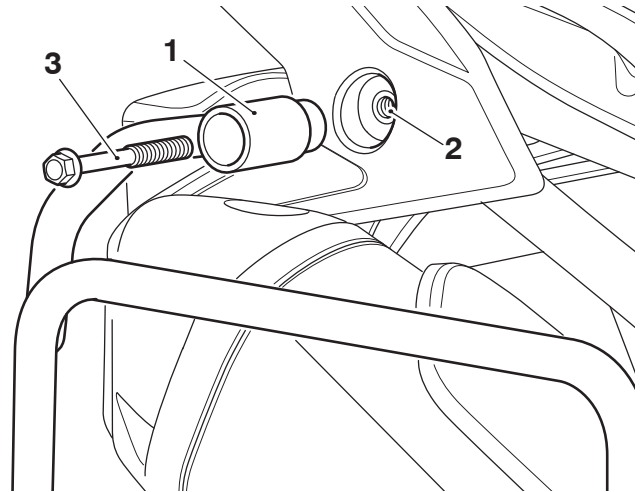
- 8. Fit an M8 x 80 mm fixing from the kit to the rear pannier mounting frame fixing position. If the pannier mounting frame has an identification groove on the rear mounting boss, place an M8 washer from the kit between the pannier mounting frame and grab rail mounting, as shown. Loosely fit an original lock nut to the fixing.

Pannier Frames with Identification Groove



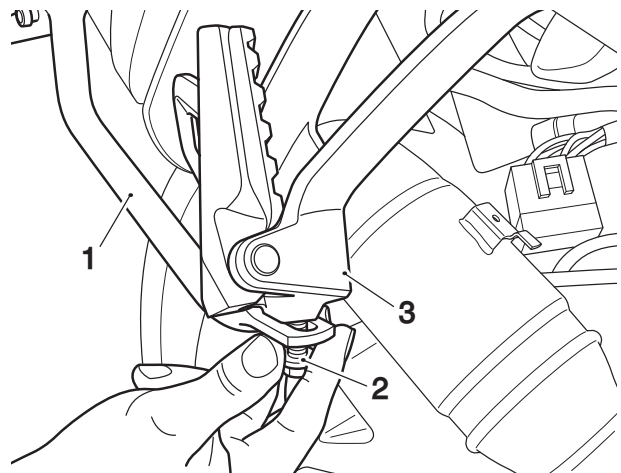
- 1. Pannier mounting frame
- 2. Identification groove
- 3. Grab rail mounting
- 4. Fixing, M8 x 80 mm
- 5. Washer, M8

Pannier Frames without Identification Groove



- 1. Pannier mounting frame
- 2. Grab rail mounting
- 3. Fixing, M8 x 80 mm

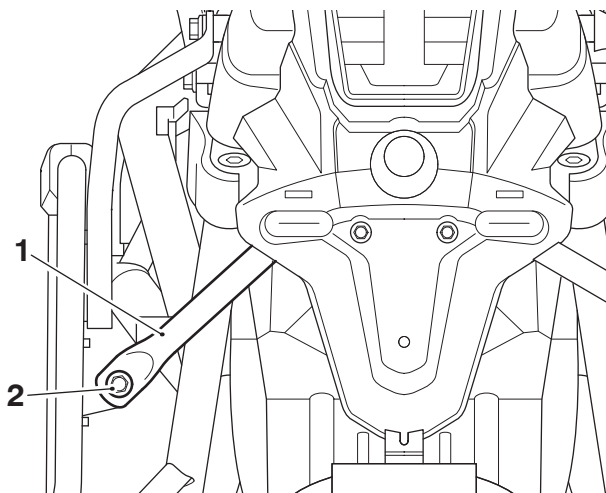
- 9. Align the pannier mounting frame's lower mounting point to the rear footrest mounting and secure using an M8 x 20 mm fixing from the kit. Do not fully tighten at this stage.



- 1. Pannier mounting frame
- 2. Fixing, M8 x 20 mm
- 3. Rear footrest mounting

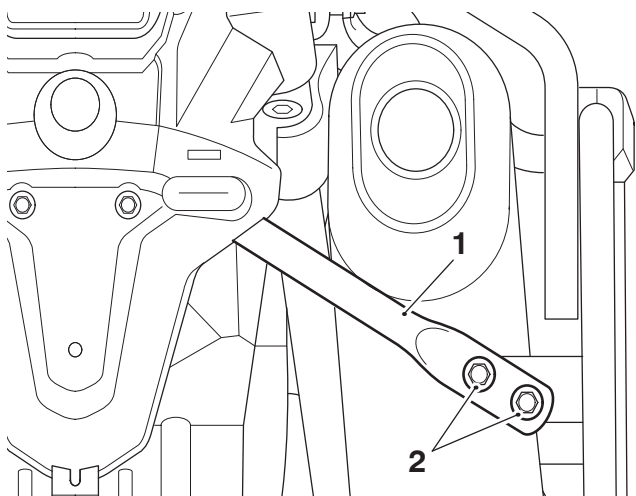
- 10. Repeat steps 5 to 8 for the left hand pannier mounting frame.

11. Locate the pannier link bar to the left hand pannier mounting frame and secure using the M8 lock nut and M8 x 20 mm fixing from the kit. Do not fully tighten at this stage.



1. Pannier link bar
2. Fixing, M8 x 20 mm

12. Locate the pannier link bar to the right hand pannier mounting frame and secure using the remaining M8 lock nuts and M8 x 20 mm fixings from the kit. Do not fully tighten at this stage.

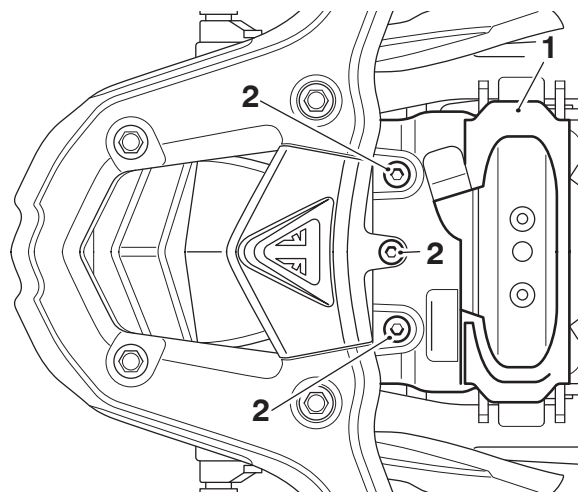


1. Pannier link bar
2. Fixing, M8 x 20 mm

13. Tighten all fixings as follows:
 - ▼ Tighten the left hand pannier mounting frame's upper fixings to **20 Nm**.
 - ▼ Tighten the left hand pannier mounting frame's lower fixings to **12 Nm**.
 - ▼ Tighten the right hand pannier mounting frame's upper fixings to **20 Nm**.
 - ▼ Tighten the right hand pannier mounting frame's lower fixings to **12 Nm**.
 - ▼ Tighten the pannier link bar fixings to **12 Nm**.

Tiger 900, Tiger 850 Sport Models Only

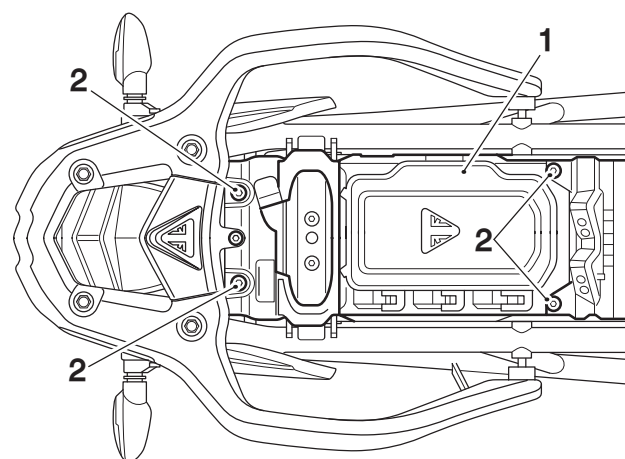
14. Refit the inner mudguard moulding with the original fixings. Tighten the fixings to **3 Nm**.



1. Inner mudguard moulding
2. Fixings

Tiger 900 GT, Tiger 900 GT Pro, Tiger 900 GT (LRH), Tiger 900 GT Aragon Edition, Tiger 900 Rally, Tiger 900 Rally Pro, Tiger 900 Rally Aragon Edition Models Only

15. Refit the storage compartment with the original fixings. Tighten the fixings to **3 Nm**.



1. Storage compartment
2. Fixings

16. Refit the passenger and rider's seats as described in the Service Manual.
17. Remove the motorcycle from the paddock stand and place on the side stand.

Replacement Tyres

NOTICE

A list of approved tyres specific to these models is available from your authorised Triumph dealer, or on the internet at www.triumph.co.uk.

⚠ WARNING

Use the recommended tyres **ONLY** in the combinations given. Do not mix tyres from different manufacturers or mix different specification tyres from the same manufacturers as this may result in loss of motorcycle control and an accident.

⚠ WARNING

Never ride an accessory-equipped motorcycle, or a motorcycle carrying a payload of any kind, at speeds above 80 mph (130 km/h). In either/both of these conditions, speeds in excess of 80 mph (130 km/h) should not be attempted even where the legal speed limit permits this. The presence of accessories and/or payload will cause changes in the stability and handling of the motorcycle. Failure to allow for changes in motorcycle stability may lead to loss of motorcycle control or an accident. When riding at high speed, always be aware that various motorcycle configurations and environmental factors can adversely affect the stability of your motorcycle. For example:

Incorrectly balanced loads on both sides of the motorcycle

Incorrectly adjusted front and rear suspension settings

Incorrectly adjusted tyre pressures

Excessively or unevenly worn tyres

Side winds and turbulence from other vehicles

Loose clothing.

Remember that the 80 mph (130 km/h) absolute limit will reduce by the fitting of non-approved accessories, incorrect loading, worn tyres, overall motorcycle condition and poor road or weather conditions.

⚠ WARNING

This motorcycle must not be operated above the legal road speed limit except in authorised closed-course conditions.

⚠ WARNING

Only operate this Triumph motorcycle at high speed in closed-course, on-road competition or on closed-course racetracks.

High-speed operation should only be attempted by riders who have been instructed in the techniques necessary for high-speed riding and are familiar with the motorcycle's characteristics in all conditions.

High-speed operation in any other circumstances is dangerous and will lead to loss of motorcycle control and an accident.

⚠ WARNING

After fitting the accessory kit the motorcycle will exhibit new handling characteristics.

Operate the motorcycle in a safe area free from traffic to gain familiarity with any new characteristics.

Operation of the motorcycle when not familiar with any new handling characteristics may lead to loss of motorcycle control which could result in serious injury or death.

⚠ WARNING

If, after fitting this accessory kit, you have any doubt about the performance of any aspect of the motorcycle, contact a competent person with the specialist knowledge and technical understanding of motorcycles, such as an authorised Triumph dealer.

Riding a motorcycle when there is any doubt as to any aspect of the performance of the motorcycle may lead to loss of motorcycle control which could result in serious injury or death.

⚠ WARNING

Never ride an accessory-equipped motorcycle at speeds above 80 mph (130 km/h).

Remember that the 80 mph (130 km/h) limit will be reduced by the fitting of non-approved accessories, incorrect loading, worn tyres, overall motorcycle condition and poor road or weather conditions.

The presence of accessories will cause changes in the stability and handling of the motorcycle. Failure to allow for changes in motorcycle stability may lead to loss of motorcycle control which could result in serious injury or death.

⚠ WARNING

High-speed operation should only be attempted by riders who have been instructed in the techniques necessary for high-speed riding and are familiar with the motorcycle's characteristics in all conditions.

Only operate this Triumph motorcycle at high speed in closed-course, on-road competition or on closed-course racetracks.

High-speed operation in any other circumstances is dangerous and may lead to loss of motorcycle control which could result in serious injury or death.

NOTICE

The motorcycle must not be operated above the legal road speed limit except in closed-course conditions.