



Accessory Fitting Instructions

Trekker Pannier Kit	
Kit Number	Models Affected
A9501341	Tiger 900, Tiger 900 GT, Tiger 900 GT Pro, Tiger 900 GT (LRH), Tiger 900 GT Aragon Edition, Tiger 900 Rally, Tiger 900 Rally Pro, Tiger 900 Rally Aragon Edition
A9501272	Tiger 1200 GT, Tiger 1200 GT Pro, Tiger 1200 Rally Pro, Tiger 1200 Explorer, Tiger 1200 Rally Explorer

Note:

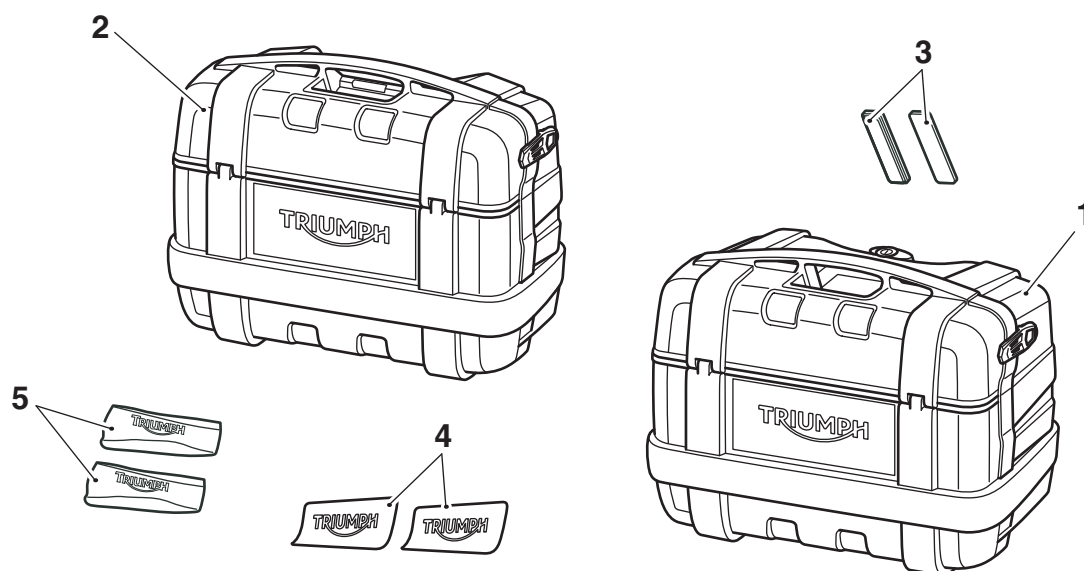
- The Accessory Pannier Kit A9501341 listed above must only be used in conjunction with the Accessory Pannier Mounting Rail Kit A9501288.
- The Accessory Pannier Kit A9501272 listed above must only be used in conjunction with the Accessory Pannier Mounting Rail Kit A9500777.

Thank you for choosing this Triumph genuine accessory kit. This accessory kit is the product of Triumph's use of proven engineering, exhaustive testing, and continuous striving for superior reliability, safety and performance.

Completely read all of these instructions before commencing the installation of the accessory kit in order to become thoroughly familiar with the kit's features and the installation process.

These instructions should be considered a permanent part of your accessory kit, and should remain with it even if your accessory equipped motorcycle is subsequently sold.

Parts Supplied: A9501341, A9501272



1. Pannier, 33L, right hand	1 off	4. Badge (if supplied)	2 off
2. Pannier, 46L, left hand	1 off	5. Cleaning wipe	2 off
3. Reflector	2 off		



Warning

Fit only genuine Triumph accessories to those models approved by Triumph as listed in the associated Triumph fitting instructions. The accessory kits covered in this instruction are designed for use on specific models of Triumph motorcycle. The accessory kits and the models applicable are listed at the start of the instruction. They should never be fitted to any other Triumph model or to any other manufacturer's motorcycle. Fitting an accessory kit to a Triumph model not listed, or to any other manufacturer's motorcycle will affect the performance, stability and handling of the motorcycle. This may affect the rider's ability to control the motorcycle and could result in an accident causing severe injuries or death.



Warning

Always have Triumph approved parts, accessories and conversions fitted by a trained technician of an authorised Triumph dealer. The fitment of parts, accessories and conversions by a technician who is not of an authorised Triumph dealer may affect the handling, stability or other aspects of the motorcycle's operation which will result in loss of motorcycle control and an accident.



Warning

Throughout this operation, make sure that the motorcycle is stabilised and adequately supported to prevent risk of injury from the motorcycle falling.

Note:

- Triumph offers a broad range of approved genuine accessories for your motorcycle. We cannot therefore cover all possible equipment variations in these instructions. For removal and installation of Triumph Genuine Accessories always refer to the instructions supplied with the respective accessory kit. To obtain additional copies of any Triumph accessory instructions, visit www.triumphinstructions.com or contact your authorised Triumph dealer.

Models Fitted with Rear Side Reflectors



Caution

When fitting self-adhesive parts care must be taken to make sure positioning is correct and accurate. Once the adhesive has been attached to the mounting surface, there is no satisfactory method of removal or re-positioning if incorrectly aligned. Initial bonding is instant, full bonding is achieved after 72 hours.

Notice

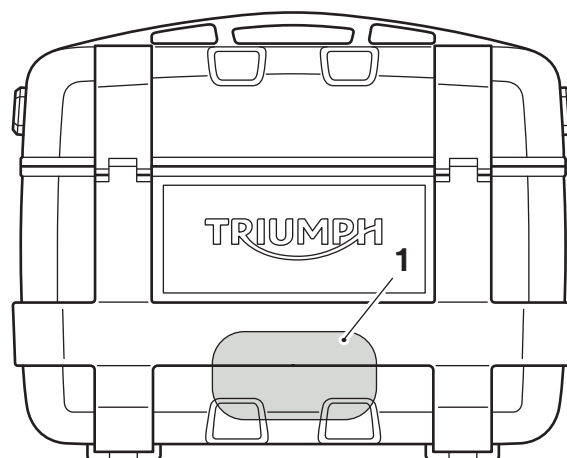
Failure to fit a reflector to each pannier as shown may contravene the law of your country, state or territory. This will render the motorcycle illegal for road use where such laws apply. Always fit reflectors as shown.

Notice

Do not fit a reflector to each pannier in Japan as this will contravene Japanese law and render the motorcycle illegal for road use.

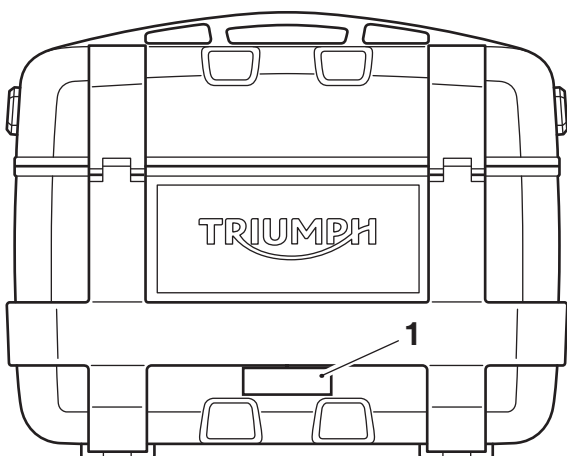
- Read the warning notices printed on the cleaning wipe packet.
- The surface to which the reflector is affixed must be clean and dry to make sure that the adhesive has a sound base to adhere to. Use the cleaning wipe supplied for this purpose.

- Using the cleaning wipes provided, clean the area of both panniers prior to fastening each reflector, as shown below. Make sure the surface of each pannier is clean and free from grease.



- Cleaning area
- Peel the protective film from the back of each reflector.

3. Fit one reflector to each pannier, in the position shown.

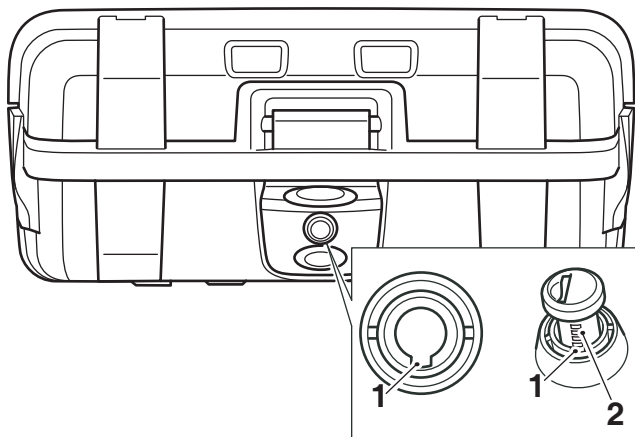


1. Reflector

Lock Barrel Fitment

Note:

- The lock barrel will only fit one way.
1. Take a lock barrel (supplied with the motorcycle). Align the tumblers to the slot and push the barrel into position until it clicks into place.



1. Slot
2. Tumblers

2. Check the operation of the lock barrel.

Fitting the Trekker Panniers

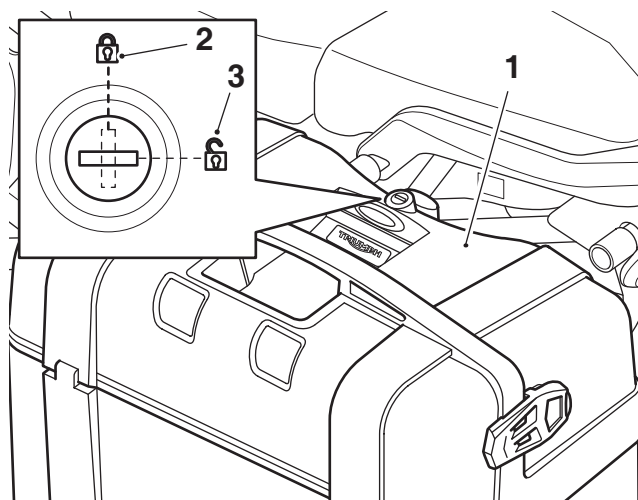


Warning

The 33L pannier must be fitted to the right hand side of the motorcycle and the 46L pannier to the left hand side of the motorcycle. Fitting the panniers on the incorrect side of the motorcycle could lead to instability and cause loss of motorcycle control and an accident.

Note:

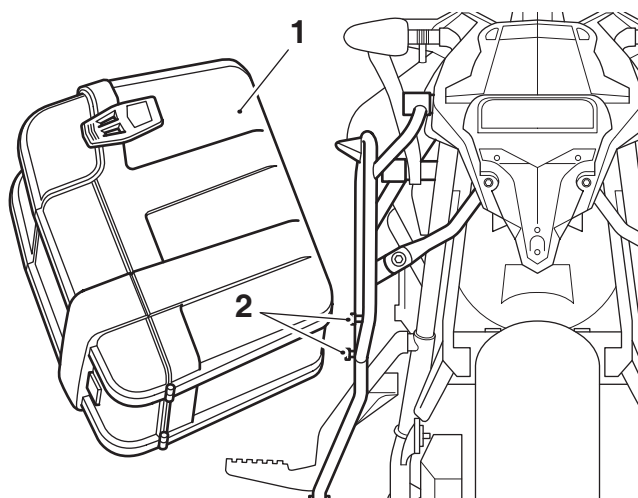
- The procedure to mount or remove a pannier is the same for both the left hand side and the right hand side.
1. The pannier lock has two positions, as shown below. Insert the key in the lock and turn to the UNLOCK position.



1. Pannier
2. Lock, LOCK position
3. Lock, UNLOCK position

To Install each Trekker Pannier:

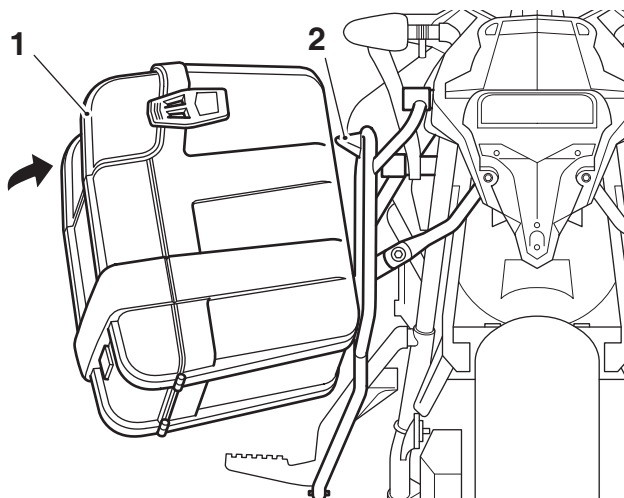
2. Position the pannier in the orientation shown on to pannier rail lower mounting such that the mounting slots on the bottom rear of the pannier locate with the mounting hooks on the pannier rail.



1. Pannier
2. Mounting hooks

Note:

- The pannier will lock to the pannier rail when the latch on the pannier rail aligns to the locking mechanism of the pannier.
 - An audible click can be heard when the locking mechanism on the pannier is correctly latched to the pannier rail. If an audible click cannot be heard the pannier may not be correctly latched to the pannier rail.
3. Lock the pannier to the pannier rail by pushing the top of the pannier towards the pannier rail to fully engage the pannier locking mechanism with the pannier rail latch.



1. Pannier
2. Latch, pannier rail

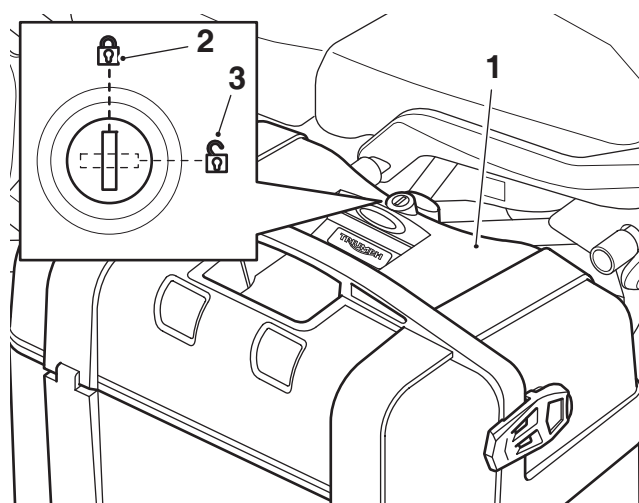


Warning

To prevent detachment of the pannier while riding, after fitting always grasp the pannier and pull firmly upwards and to outwards. If the pannier is not correctly secured, it will detach from the pannier rail. A loose or detached pannier could cause loss of motorcycle control and an accident.

Note:

- It is recommended to have the pannier in the locked condition while riding the motorcycle.
4. To lock the pannier onto the pannier rail, insert the key in the lock and turn to the LOCK position, as shown below. Note, this will also lock the pannier lid.



1. Pannier
2. Lock, LOCK position
3. Lock, UNLOCK position

5. Check that the pannier is securely locked to the pannier rail.

Badge Fitment (If supplied loose)



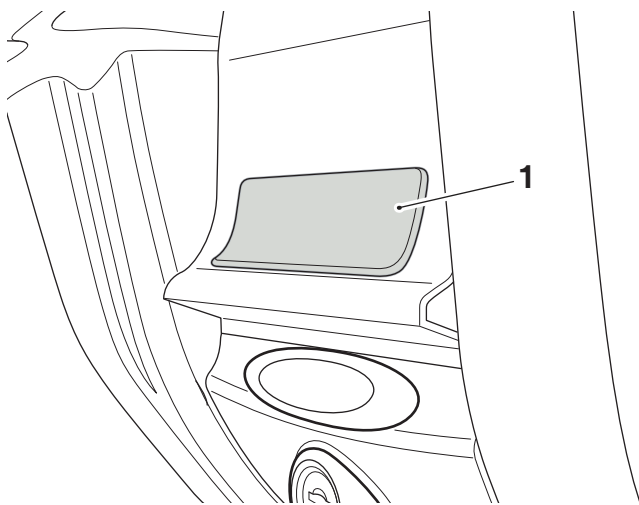
Caution

When fitting self-adhesive parts care must be taken to make sure positioning is correct and accurate. Once the adhesive has been attached to the mounting surface, there is no satisfactory method of removal or re-positioning if incorrectly aligned. Initial bonding is instant, full bonding is achieved after 72 hours.

Note:

- Read the warning notices printed on the cleaning wipe packet.
- The surface to which the Badge is affixed must be clean and dry to make sure that the adhesive has a sound base to adhere to. Use the cleaning wipe supplied for this purpose.

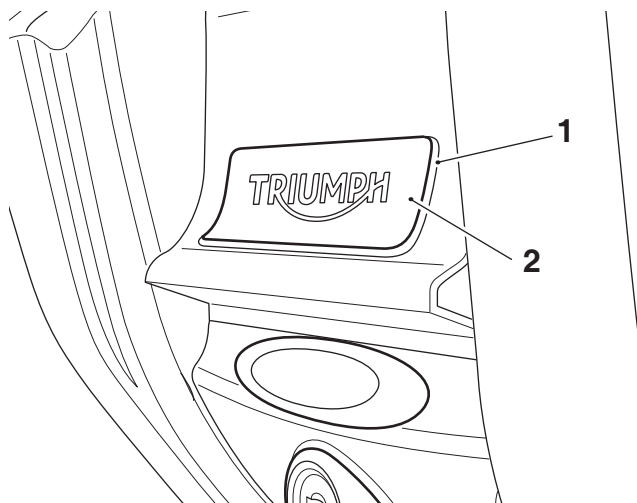
1. Collect the two badges from the kit.
2. Using the cleaning wipes provided, clean the recessed areas of both panniers prior to fitting each badge, as shown below. Make sure the surface of each pannier is clean and free from grease.



1. Cleaning area

3. Peel the protective film from the back of one of the badges.

4. Carefully position the badge on the pannier in the user's preferred orientation within the cleaned area. Apply firm and even pressure with fingers across the whole surface of the badge to make sure a good surface adhesion is achieved.



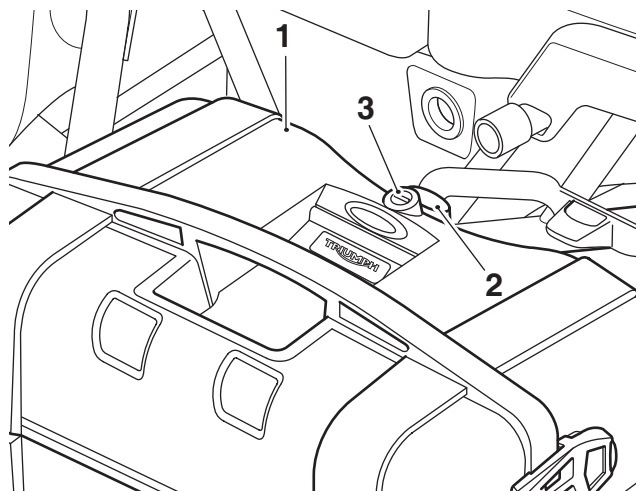
1. Recessed area, pannier

2. Badge

5. Repeat steps 2 to 4 for the second badge.

To Remove each Trekker Pannier:

6. To remove the pannier from the pannier rail, insert the key in the lock and turn the key to the UNLOCK position. Press the button to the rear of the lock on the pannier, this will release the pannier from the pannier rail.



1. Pannier

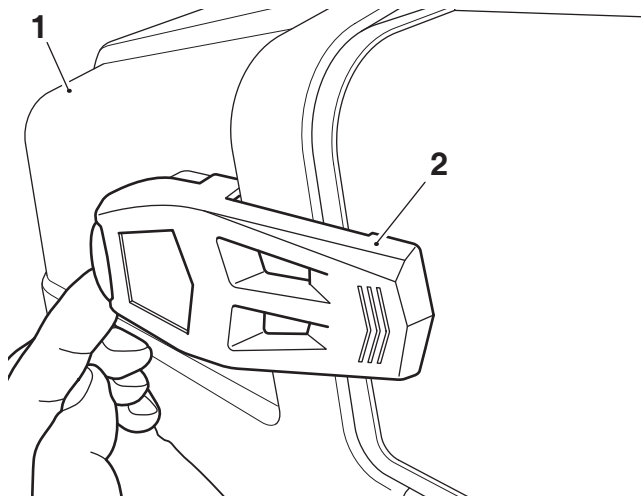
2. Rear button

3. Lock

7. Whilst supporting the pannier detach the pannier from the pannier rail latch, then lift the pannier free from the lower mounting points on the pannier rail.

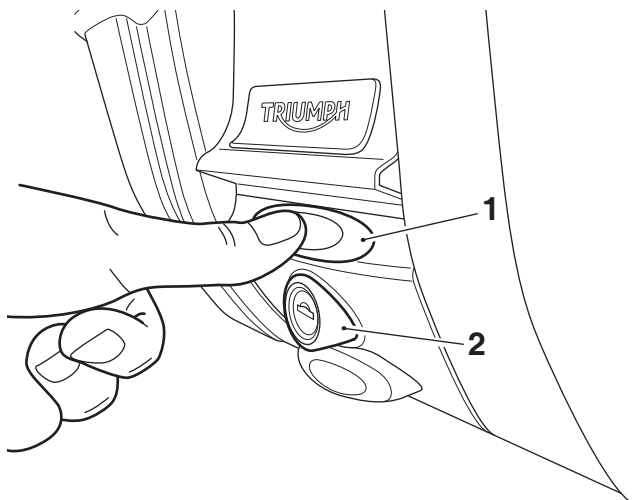
Pannier Operation

1. To open the pannier release the latches on the front and rear sides of the pannier.



1. Pannier
2. Latch, rear side shown

2. Turn the key to the UNLOCK position and press the button in front of the lock on the pannier. Always make sure the lock is returned to the LOCK position and the key removed after the pannier is closed.



1. Front button
2. Lock

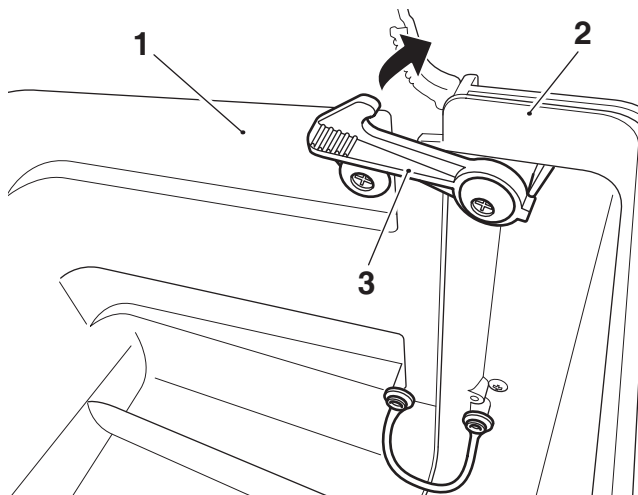
3. To close and lock the pannier, close the pannier lid or side panel depending on configuration and secure with the latches on the front and rear sides of the pannier. Turn the key to the LOCK position and remove it.

Note:

- The pannier configuration can be changed to either top opening or side opening, as detailed below.

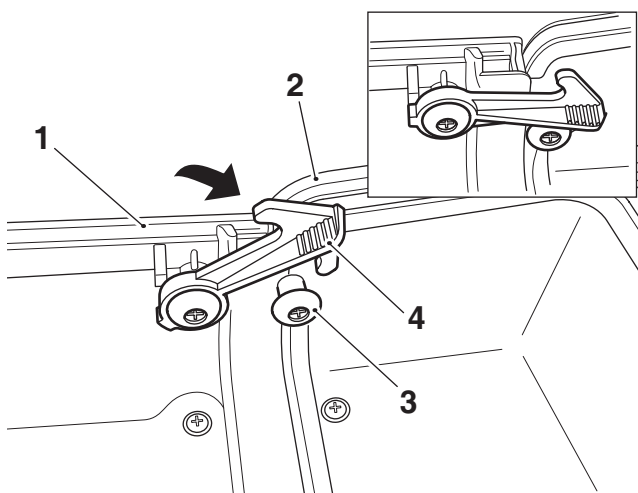
To change Top opening to Side opening

4. With the pannier lid open release the front and rear internal latches securing the pannier side panel to the pannier body.



1. Pannier body
2. Pannier side panel
3. Internal latch, front side shown

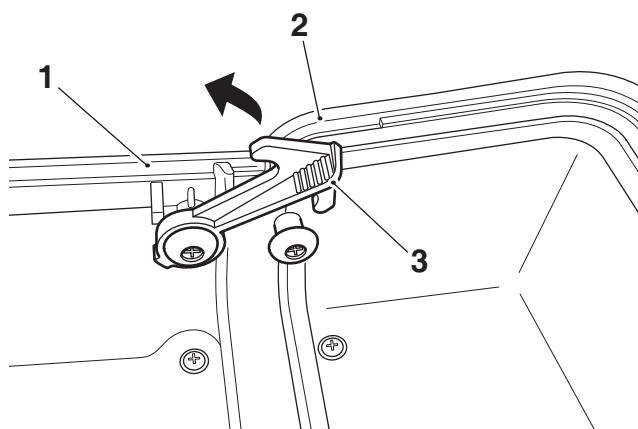
5. Open the side panel of the pannier and attach the internal latches to the retaining bosses on the pannier lid, as shown. Make sure the latches are fully engaged on the retaining bosses to secure the pannier lid to the pannier side panel.



1. Pannier side panel
2. Pannier lid
3. Retaining boss, front side shown
4. Internal latch, front side shown

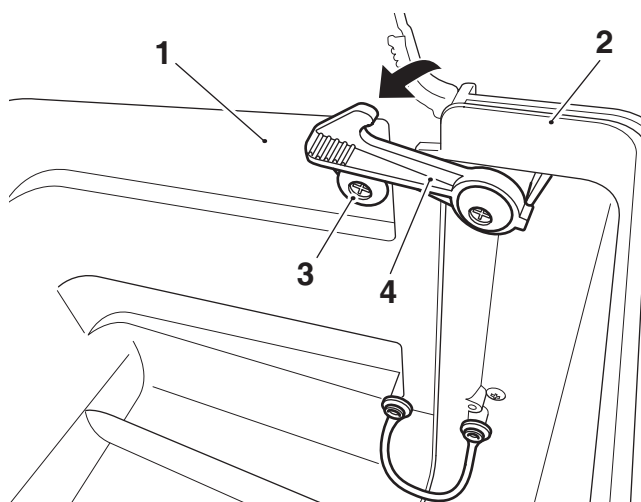
To change Side opening to Top opening

6. With the pannier side panel open release the front and rear internal latches securing the pannier lid to the pannier side panel.



1. Pannier side panel
2. Pannier lid
3. Internal latch, front side shown

7. Close the pannier side panel and attach the internal latches to the retaining bosses on the pannier body, as shown. Make sure the latches are fully engaged on the retaining bosses to secure the pannier side panel to the pannier body.

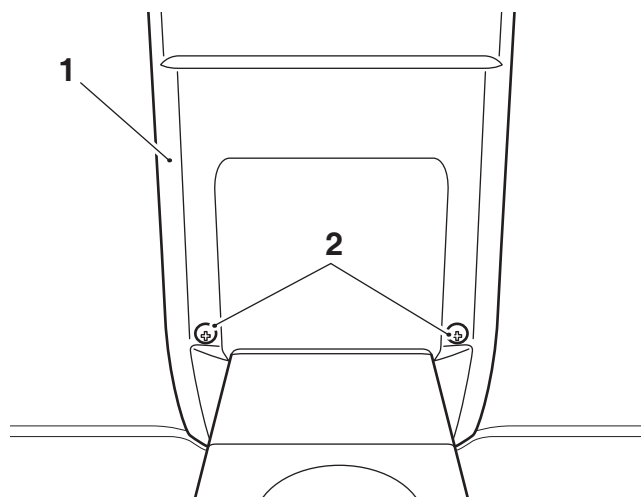


1. Pannier body
2. Pannier side panel
3. Retaining boss, front side shown
4. Internal latch, front side shown

Pannier - Lock Barrel Replacement

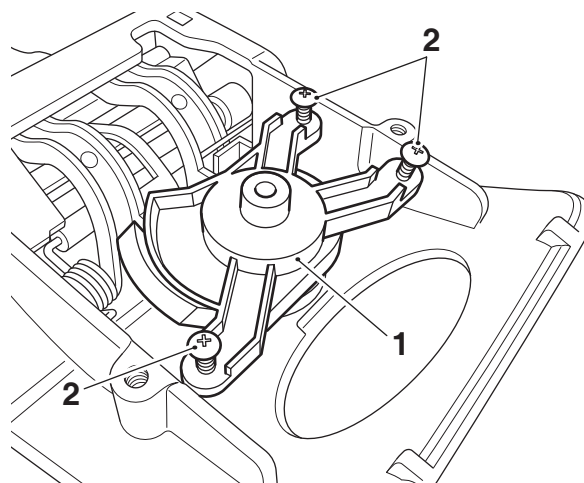
Latch Housing Removal

1. Open the pannier lid and locate the two fixings retaining the latch housing to the pannier. Remove the fixings and remove the latch housing from the pannier. Retain the fixings for reuse.



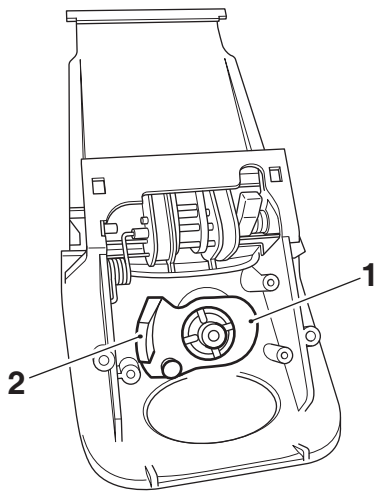
1. Pannier
2. Fixings

2. Remove the retaining piece from the latch housing. Retain the fixings and retaining piece for reuse.



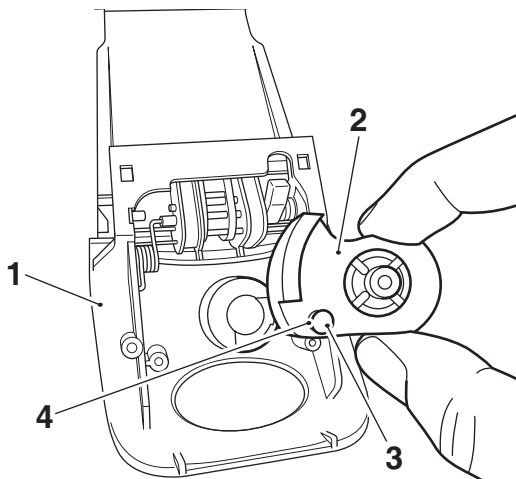
1. Retaining piece
2. Fixings

3. Make sure the cam is in the unlocked position with the locking section of the cam in the orientation shown.



1. Cam
2. Locking section

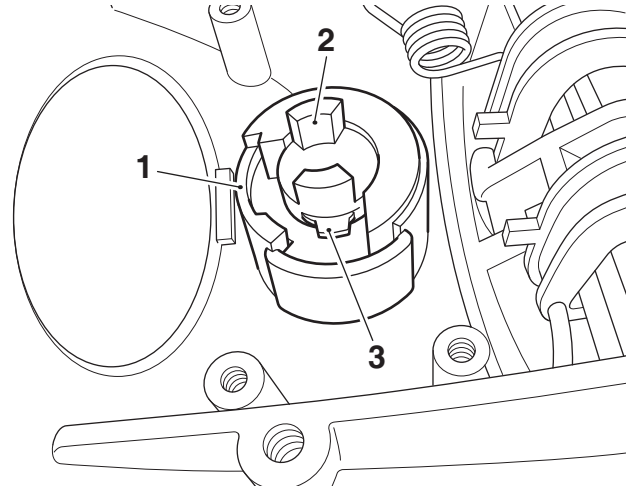
4. Lift and remove the cam from the latch housing making sure the ball bearing and spring do not become separated from the latch housing. Retain the cam for reuse.



1. Latch housing
2. Cam
3. Ball bearing
4. Spring

Note:

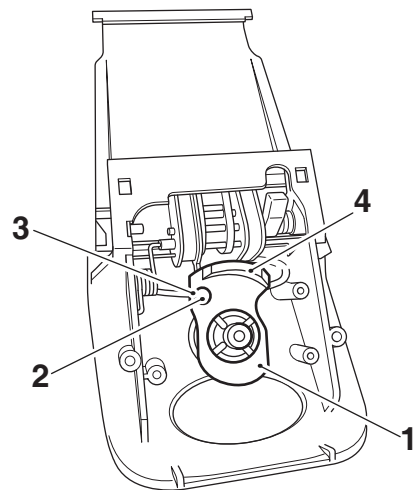
- **Make sure the key is inserted into the lock barrel prior to removing the lock barrel from the lock assembly.**
5. Press the retaining lock pin into the lock barrel and remove the lock barrel from the front of the latch housing.



1. Latch housing
2. Lock barrel
3. Retaining lock pin

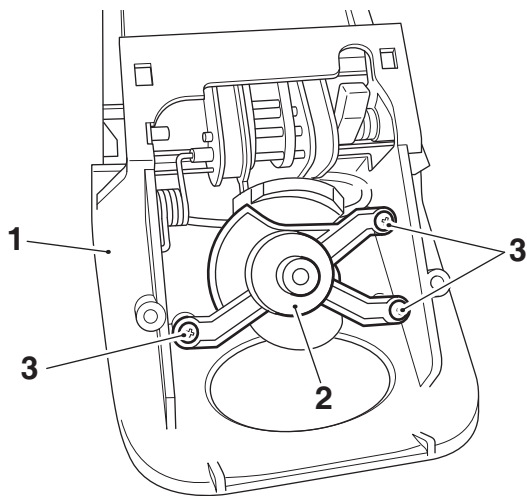
Latch Housing Fitment

6. Making sure the ball bearing and spring remain correctly located in the cam, refit the cam in the locked position with the locking section of the cam in the orientation shown.



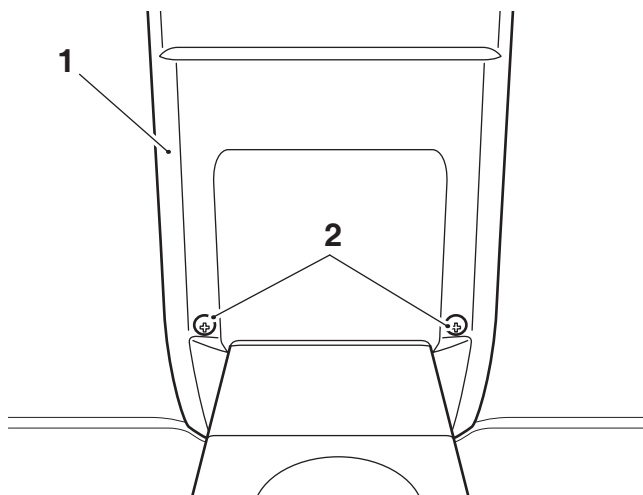
1. Cam
2. Ball bearing
3. Spring
4. Locking section

7. Refit the retaining piece on to the latch housing and secure with the original fixings. Tighten the fixings to **1 Nm**.



1. Latch housing
2. Retaining piece
3. Fixings

8. Refit the latch housing to the pannier using the original fixings. Tighten the fixings to **1 Nm**.



1. Pannier
2. Fixings

9. Fit the lock barrel referring to the Lock Barrel Fitment section on page 3 of this instruction.



Warning

After fitting or removing the panniers, operate the motorcycle in a safe area free from traffic to gain familiarity with the new handling characteristics. Operation when not familiar with the new characteristics of the motorcycle may result in loss of motorcycle control and an accident.



Warning

Incorrect loading may result in an unsafe riding condition leading to loss of motorcycle control and an accident.

Always make sure any loads carried are evenly distributed on both sides of the motorcycle. Make sure that the load is correctly secured such that it will not move around while the motorcycle is in motion.

Evenly distribute the load within each pannier. Pack heavy items at the bottom and on the inboard side of the pannier.

Always check the load security regularly (though not while the motorcycle is in motion) and make sure that the load does not extend beyond the rear of the motorcycle. Never exceed the maximum vehicle loading weight. Refer to the Owner's Handbook for the maximum loading weight specification.

This maximum loading weight is made up from the combined weight of the rider, passenger, any accessories fitted and any load carried.

For models that have adjustable suspension settings, make sure that front and rear spring preload and damping settings are suitable for the loading condition of the motorcycle. Refer to the Owner's Handbook.

Note the maximum permissible payload for the panniers is stated on a label inside the pannier.



Warning

The Trekker Panniers are designed to be fitted as a pair. Never ride the motorcycle with only one pannier installed. Riding the motorcycle with one pannier installed may cause the motorcycle to become unstable leading to loss of motorcycle control and an accident.

Replacement Tyres

Note:

- A list of approved tyres specific to these models is available from your authorised Triumph dealer, or on the internet at www.triumph.co.uk.



Warning

Use the recommended tyres ONLY in the combinations given. Do not mix tyres from different manufacturers or mix different specification tyres from the same manufacturers as this may result in loss of motorcycle control and an accident.

Cleaning the Luggage System

All parts of the luggage system fitted to your motorcycle must be cleaned regularly to avoid a deterioration of their appearance.

Washing

Prepare a mixture of cold water and mild automotive cleaner. Do not use a highly alkaline soap as commonly found at commercial car washes because it leaves a residue.

Wash the luggage system with a soft cloth. Do not use an abrasive scouring pad or steel wool. They will damage the finish.

Rinse the luggage system thoroughly.

Make sure no soap or water enters the inside compartment.

Dry the luggage system as much as possible with a soft cloth.

Protecting

When the luggage system is dry, protect with a colourless lubricating spray.



Caution

The use of abrasive cleaners and polishes will damage the system and must not be used.

It is recommended that regular protection be applied to the system as this will both protect and enhance the system's appearance.

Note:

- It is recommended to use the Triumph inner bags to protect both the luggage contents and the inner surfaces of the luggage.



Warning

Never ride an accessory-equipped motorcycle, or a motorcycle carrying a payload of any kind, at speeds above 80 mph (130 km/h). In either/both of these conditions, speeds in excess of 80 mph (130 km/h) should not be attempted even where the legal speed limit permits this.

The presence of accessories and/or payload will cause changes in the stability and handling of the motorcycle.

Failure to allow for changes in motorcycle stability may lead to loss of motorcycle control or an accident.

When riding at high speed, always be aware that various motorcycle configurations and environmental factors can adversely affect the stability of your motorcycle. For example:

- Incorrectly balanced loads on both sides of the motorcycle
- Incorrectly adjusted front and rear suspension settings
- Incorrectly adjusted tyre pressures
- Excessively or unevenly worn tyres
- Side winds and turbulence from other vehicles
- Loose clothing.

Remember that the 80 mph (130 km/h) absolute limit will reduce by the fitting of non-approved accessories, incorrect loading, worn tyres, overall motorcycle condition and poor road or weather conditions.



Warning

If, after fitment of this accessory kit, you have any doubt about the performance of any aspect of the motorcycle, contact an authorised Triumph dealer and do not ride the motorcycle until the authorised dealer has declared it fit for use. Riding a motorcycle when there is any doubt as to any aspect of the performance of the motorcycle may result in loss of control of the motorcycle leading to an accident.



Warning

This motorcycle must not be operated above the legal road speed limit except in authorised closed-course conditions.



Warning

Only operate this Triumph motorcycle at high speed in closed-course, on-road competition or on closed-course racetracks. High-speed operation should only be attempted by riders who have been instructed in the techniques necessary for high-speed riding and are familiar with the motorcycle's characteristics in all conditions.

High-speed operation in any other circumstances is dangerous and will lead to loss of motorcycle control and an accident.



Warning

Never ride an accessory equipped motorcycle at speeds above 80 mph (130 km/h).

The presence of accessories will cause changes in the stability and handling of the motorcycle. Failure to allow for changes in motorcycle stability may lead to loss of control or an accident.

Remember that the 80 mph (130 km/h) limit will be reduced by the fitting of non-approved accessories, incorrect loading, worn tyres, overall motorcycle condition and poor road or weather conditions.