

## Accessory Fitting Instructions

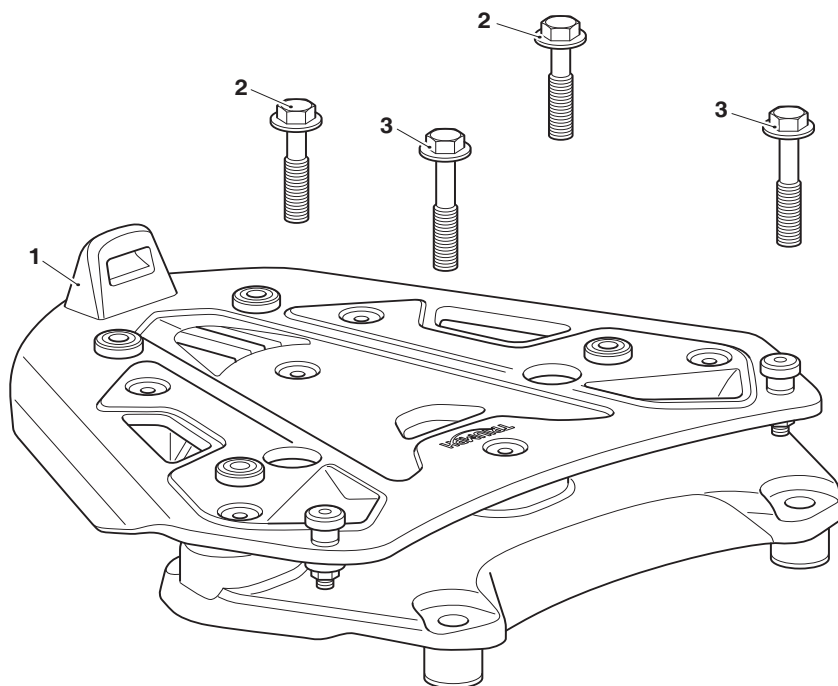
Sliding Carriage Kit	
Kit Number	Models Affected
A9500640	Tiger 900, Tiger 900 GT, Tiger 900 GT Pro, Tiger 900 GT (LRH), Tiger 900 GT Aragon Edition, Tiger 900 Rally, Tiger 900 Rally Pro, Tiger 900 Rally Aragon Edition, Tiger 850 Sport
A9500988	Tiger 1200 GT, Tiger 1200 GT Pro, Tiger 1200 Rally Pro, Tiger 1200 GT Explorer, Tiger 1200 Rally Explorer

Thank you for choosing this Triumph genuine accessory kit. This accessory kit is the product of Triumph's use of proven engineering, exhaustive testing, and continuous striving for superior reliability, safety and performance.

Completely read all of these instructions before commencing the installation of the accessory kit in order to become thoroughly familiar with the kit's features and the installation process.

These instructions should be considered a permanent part of your accessory kit, and should remain with it even if your accessory equipped motorcycle is subsequently sold.

### Parts Supplied:



1. Sliding carriage assembly	1 off	3. Fixing, M8 x 50 mm	2 off
2. Fixing, M8 x 40 mm	2 off		

### Note:

- The Sliding Carriage Kit A9500640 is shown.

**Warning**

Fit only genuine Triumph accessories to those models approved by Triumph as listed in the associated Triumph fitting instructions. The accessory kits covered in this instruction are designed for use on specific models of Triumph motorcycle. The accessory kits and the models applicable are listed at the start of the instruction. They should never be fitted to any other Triumph model or to any other manufacturer's motorcycle. Fitting an accessory kit to a Triumph model not listed, or to any other manufacturer's motorcycle will affect the performance, stability and handling of the motorcycle. This may affect the rider's ability to control the motorcycle and could result in an accident causing severe injuries or death.

**Warning**

Always have Triumph approved parts, accessories and conversions fitted by a trained technician of an authorised Triumph dealer. The fitment of parts, accessories and conversions by a technician who is not of an authorised Triumph dealer may affect the handling, stability or other aspects of the motorcycle's operation which may result in loss of motorcycle control and an accident.

**Warning**

Throughout this operation, make sure that the motorcycle is stabilised and adequately supported to prevent risk of injury from the motorcycle falling.

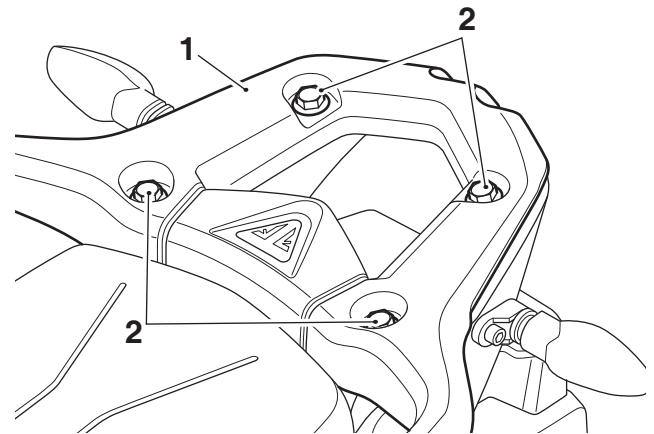
**Warning**

A torque wrench of known accurate calibration must be used when fitting this accessory kit. Failure to tighten any of the fasteners to the correct torque specification may affect motorcycle performance, handling and stability. This may result in loss of motorcycle control and an accident.

**Note:**

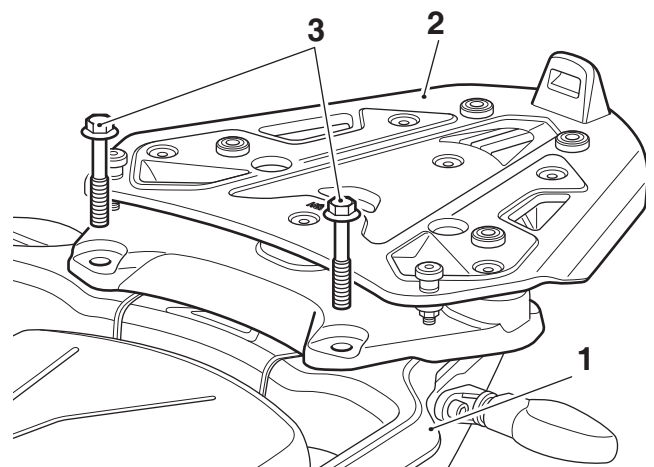
- Triumph offers a broad range of approved genuine accessories for your motorcycle. We cannot therefore cover all possible equipment variations in these instructions. For removal and installation of Triumph Genuine Accessories always refer to the instructions supplied with the respective accessory kit. To obtain additional copies of any Triumph accessory instructions, visit [www.triumphinstructions.com](http://www.triumphinstructions.com) or contact your authorised Triumph dealer.

- Remove the four M8 x 25 mm fixings from the rear rack. Retain the fixings for reuse if the motorcycle is to be returned to its original condition.



- Rear rack
- Fixings, M8 x 25 mm

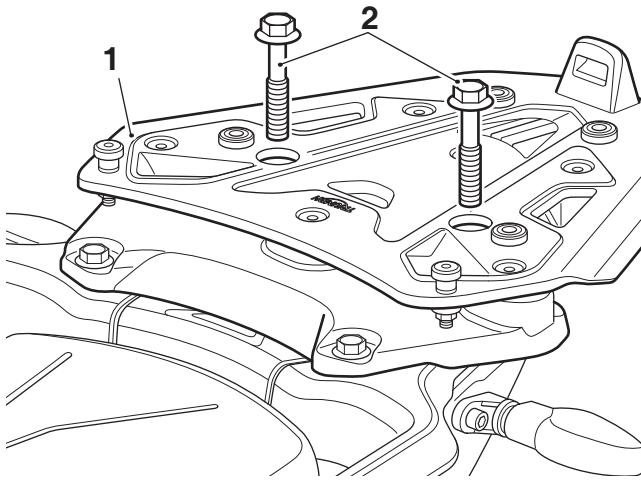
- Align the sliding carriage to the rear rack. Fit two M8 x 50 mm fixings from the kit through the sliding carriage front mounts. Do not fully tighten the fixings at this stage.



- Rear rack
- Sliding carriage
- Fixings, M8 x 50 mm

### Tiger 900 and Tiger 850 Sport Models Only

- Fit two M8 x 40 mm fixings from the kit through the sliding carriage rear mounts. Tighten the fixings to **27 Nm**.



- Sliding carriage
- Fixings, M8 x 40 mm

- Tighten the sliding carriage front fixings to **27 Nm**.

### Tiger 1200 Models Only

- Fit two M8 x 40 mm fixings from the kit through the sliding carriage rear mounts. Tighten the fixings to **25 Nm**.
- Tighten the sliding carriage front fixings to **25 Nm**.

### All Models

#### **Warning**

The sliding carriage must be allowed to move from side to side on the slide plate. If the sliding carriage is not free to move from side to side when the top box is fitted, the stability and handling characteristics of the motorcycle may be affected, leading to loss of control and an accident.

#### **Warning**

If a load is carried on the sliding carriage without utilising the top box, it must be securely attached to the sliding carriage only and not any other part of the rear rack. The sliding carriage must be allowed to move from side to side on the slide plate. If the sliding carriage is not free to move from side to side on the slide plate, the stability and handling characteristics of the motorcycle may be affected, leading to the loss of control and an accident.

### Sliding Carriage Maintenance

#### Rubber Pads

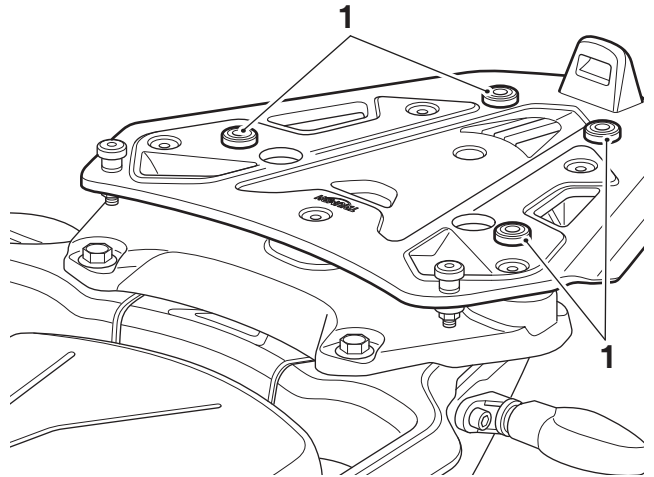
#### Note:

- If for any reason a rubber pad is damaged or becomes loose, all of the rubber pads must be replaced at the same time.

#### **Warning**

A top box incorrectly secured with the rubber pads damaged or missing may detach resulting in a dangerous riding condition. Before riding, always make sure that the top box is mounted correctly. Make sure the rubber pads are secure and not damaged in any way.

- Install the rubber pads with the contact surface facing toward the top box as shown below.



- Rubber pads

#### Sliding Mechanism

#### Note:

- Spare parts exist for servicing the sliding mechanism of the sliding carriage. Refer to the **Service Manual** for disassembly and assembly instructions.

#### **Warning**

A top box incorrectly secured with the sliding mechanism may detach resulting in a dangerous riding condition. Before riding, always make sure that the top box is mounted correctly. Make sure the sliding mechanism is secure and not damaged in any way.

## Replacement Tyres

### Note:

- A list of approved tyres specific to these models is available from your authorised Triumph dealer, or on the internet at [www.triumph.co.uk](http://www.triumph.co.uk).



### Warning

Use the recommended tyres ONLY in the combinations given. Do not mix tyres from different manufacturers or mix different specification tyres from the same manufacturers as this may result in loss of motorcycle control and an accident.



### Warning

If, after fitment of this accessory kit, you have any doubt about the performance of any aspect of the motorcycle, contact an authorised Triumph dealer and do not ride the motorcycle until the authorised dealer has declared it fit for use. Riding a motorcycle when there is any doubt as to any aspect of the performance of the motorcycle may result in loss of control of the motorcycle leading to an accident.



### Warning

This motorcycle must not be operated above the legal road speed limit except in authorised closed-course conditions.



### Warning

Only operate this Triumph motorcycle at high speed in closed-course, on-road competition or on closed-course racetracks. High-speed operation should only be attempted by riders who have been instructed in the techniques necessary for high-speed riding and are familiar with the motorcycle's characteristics in all conditions.

High-speed operation in any other circumstances is dangerous and will lead to loss of motorcycle control and an accident.



### Warning

Never ride an accessory-equipped motorcycle, or a motorcycle carrying a payload of any kind, at speeds above 80 mph (130 km/h). In either/both of these conditions, speeds in excess of 80 mph (130 km/h) should not be attempted even where the legal speed limit permits this.

The presence of accessories and/or payload will cause changes in the stability and handling of the motorcycle.

Failure to allow for changes in motorcycle stability may lead to loss of motorcycle control or an accident.

When riding at high speed, always be aware that various motorcycle configuration and environmental factors can adversely affect the stability of your motorcycle. For example:

- Incorrectly balanced loads on both sides of the motorcycle.
- Incorrectly adjusted front and rear suspension settings.
- Incorrectly adjusted tyre pressures.
- Excessively or unevenly worn tyres.
- Side winds and turbulence from other vehicles.
- Loose clothing.

Remember that the 80 mph (130 km/h) absolute limit will reduce by the fitting of non-approved accessories, incorrect loading, worn tyres, overall motorcycle condition and poor road or weather conditions.



### Warning

Never ride an accessory equipped motorcycle at speeds above 80 mph (130 km/h).

The presence of accessories will cause changes in the stability and handling of the motorcycle. Failure to allow for changes in motorcycle stability may lead to loss of control or an accident.

Remember that the 80 mph (130 km/h) limit will be reduced by the fitting of non-approved accessories, incorrect loading, worn tyres, overall motorcycle condition and poor road or weather conditions.