



Accessory Fitting Instructions

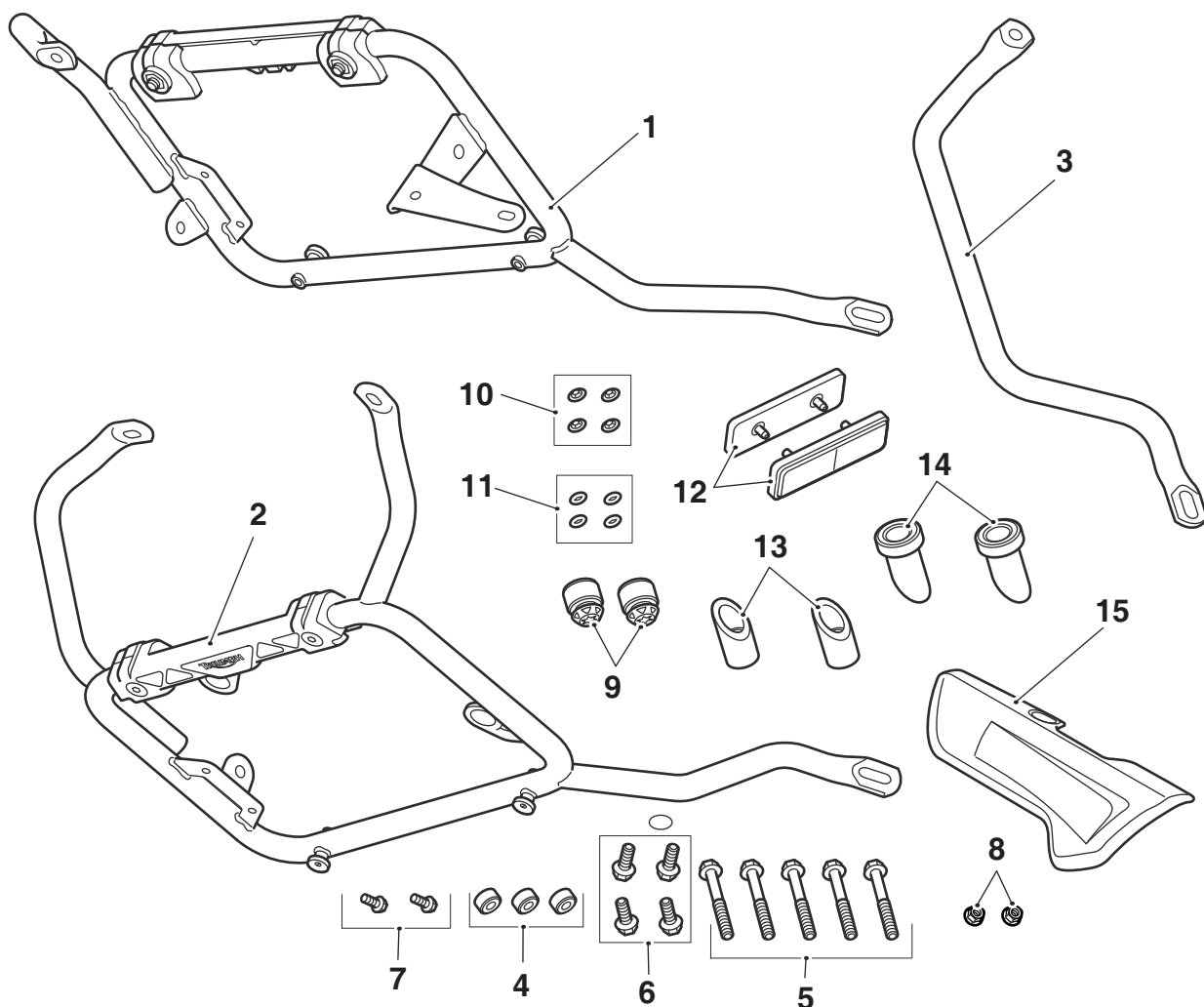
Pannier Mounting Kit	
Kit number	Models Affected
A9500603	Tiger XR, Tiger XRx, Tiger XC and Tiger XCx
Pannier Mounting Kit	
Kit number	Models Affected
A9500626	Tiger XR, Tiger XRx, Tiger XC and Tiger XCx
Expanding Clamp Kit	
Kit number	Models Affected
A9508188	Tiger XR, Tiger XRx, Tiger XC and Tiger XCx
Silencer Finisher Kit	
Kit number	Models Affected
A9508189	Tiger XR, Tiger XRx, Tiger XC and Tiger XCx

Thank you for choosing this Triumph genuine accessory kit. This accessory kit is the product of Triumph's use of proven engineering, exhaustive testing, and continuous striving for superior reliability, safety and performance.

Completely read all of these instructions before commencing the installation of the accessory kit in order to become thoroughly familiar with the kit's features and the installation process.

These instructions should be considered a permanent part of your accessory kit, and should remain with it even if your accessory-equipped motorcycle is subsequently sold.

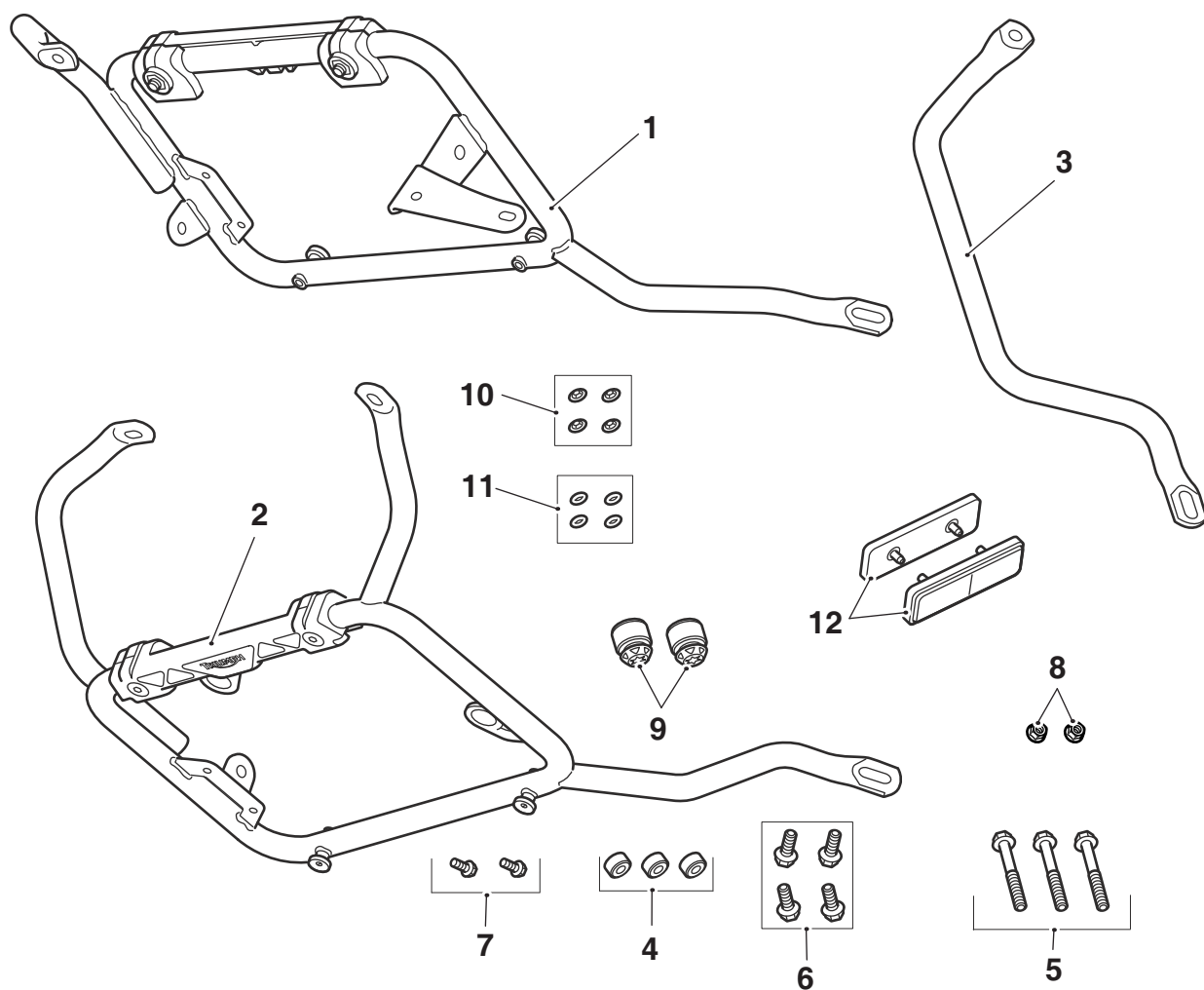
Parts supplied A9500603



T2069

1.	Mounting frame assembly, left hand	1 off	9.	Silencer rubber	2 off
2.	Mounting frame assembly, right hand	1 off	10.	O-ring, 5.6 mm	4 off
3.	Rear link bar	1 off	11.	Retaining washer, 5 mm	4 off
4.	Spacer	3 off	12.	Reflector	2 off
5.	Bolt, M8 x 65 mm	5 off	13.	Threaded insert clamp	2 off
6.	Bolt, M8 x 20 mm	4 off	14.	Shouldered insert clamp	2 off
7.	Bolt, M6 x 16 mm	2 off	15.	Silencer finisher	1 off
8.	Flanged lock nut, M8	2 off			

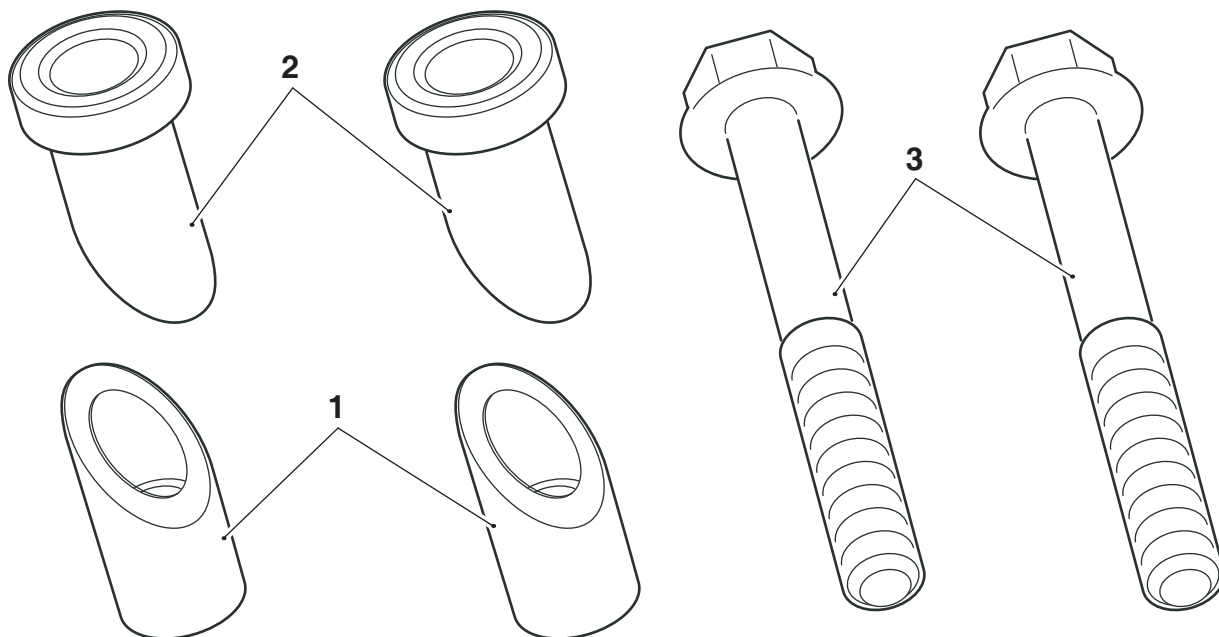
Parts supplied A9500626



T2070

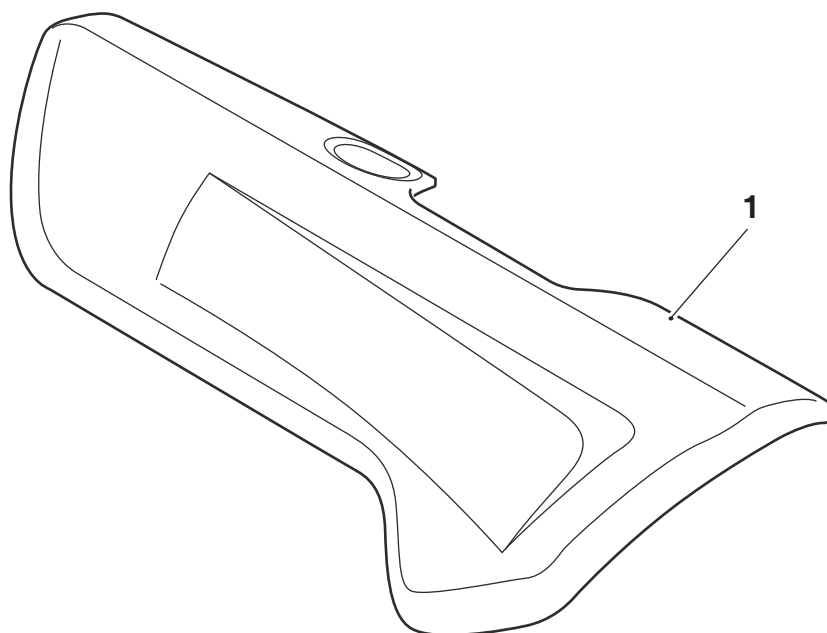
1.	Mounting frame assembly, left hand	1 off	7.	Bolt, M6 x 16 mm	2 off
2.	Mounting frame assembly, right hand	1 off	8.	Flanged lock nut, M8	2 off
3.	Rear link bar	1 off	9.	Silencer rubber	2 off
4.	Spacer	3 off	10.	O-ring, 5.6 mm	4 off
5.	Bolt, M8 x 65 mm	3 off	11.	Retaining washer, 5 mm	4 off
6.	Bolt, M8 x 20 mm	4 off	12.	Reflector	2 off

Parts supplied A9508188 up to VIN 716662 only



1.	Threaded insert clamp	2 off	3.	Bolt, M8 x 65 mm	2 off
2.	Shouldered insert clamp	2 off			

Parts supplied A9508189 up to VIN 732934 only



1.	Silencer finisher	1 off			
----	-------------------	-------	--	--	--

Warning

This accessory kit is designed for use on Triumph Tiger XR, Tiger XRx, Tiger XC and Tiger XCx motorcycles only and should not be fitted to any other Triumph model or to any other manufacturer's motorcycle. Fitting this accessory kit to any other Triumph model, or to any other manufacturer's motorcycle, may interfere with the rider and could affect the stability and handling of the motorcycle, leading to loss of control and an accident.

Warning

This accessory kit must not be fitted to Tiger 800 or Tiger 800 XC motorcycles. Fitting the accessory kit to Tiger 800 or Tiger 800 XC motorcycles could affect the handling and stability of the motorcycle's operation which may result in loss of motorcycle control and an accident.

Warning

Always have Triumph approved parts, accessories and conversions fitted by a trained technician of an authorised Triumph dealer. The fitment of parts, accessories and conversions by a technician who is not of an authorised Triumph dealer may affect the handling, stability or other aspects of the motorcycle's operation which may result in loss of motorcycle control and an accident.

Warning

Throughout this operation, ensure that the motorcycle is stabilised and adequately supported to prevent risk of injury from the motorcycle falling.

Warning

A torque wrench of known accurate calibration must be used when fitting this accessory kit. Failure to tighten any of the fasteners to the correct torque specification may affect motorcycle performance, handling and stability. This may result in loss of motorcycle control and an accident.

Note:

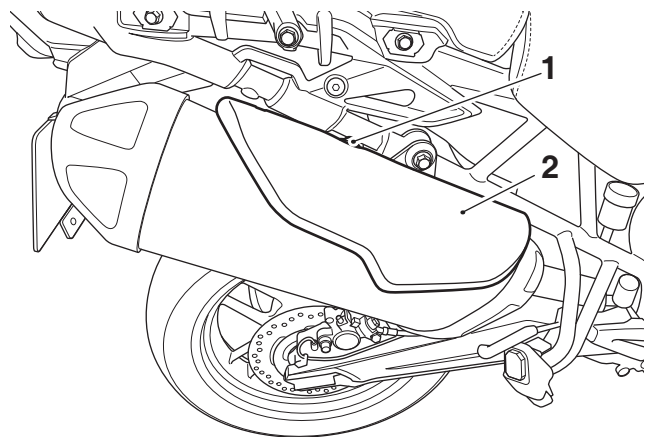
- Triumph offers a broad range of approved genuine accessories for your motorcycle. **We cannot therefore cover all possible equipment variations in these instructions. For removal and installation of Triumph Genuine Accessories always refer to the instructions supplied with the respective accessory kit. To obtain additional copies of any Triumph accessory instructions, visit www.triumphinstructions.com or contact your authorised Triumph dealer.**

Note:

- **Lock nuts can be reused, providing resistance can be felt when the locking portion passes over the thread of the bolt or stud.**
 - **Always use the correct replacement lock nut as recommended in the Triumph parts catalogue.**
1. Place the motorcycle on a paddock stand.
 2. Remove the rider's seat as described in the Service Manual.
 3. Remove the rear rack as described in the Service Manual.

Silencer Finisher - Models up to VIN 732934

1. Remove the bolt, grommet and flanged sleeve securing the silencer finisher to the silencer. Retain the bolt, grommet and flanged sleeve for reuse.
2. Slide the silencer finisher rearwards to release the tangs from their locating tabs and remove the silencer finisher. Retain the silencer finisher for reuse if the motorcycle is to be returned to its original condition.

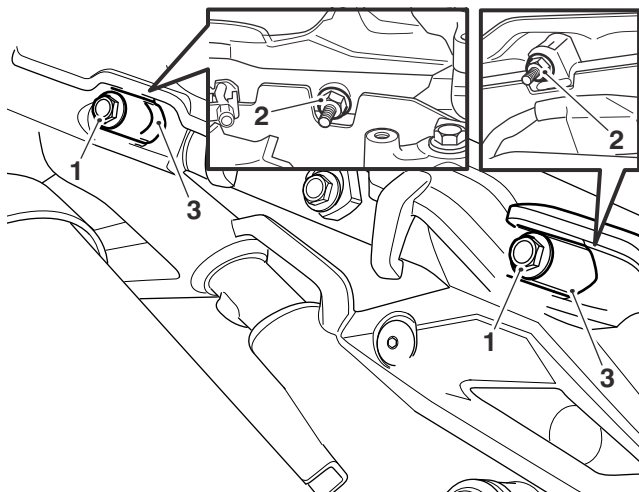


1. Bolt
2. Silencer finisher

- Position the accessory silencer finisher to the silencer location tabs and secure using the flanged sleeve, grommet and bolt removed previously. Tighten the bolt to **5 Nm**.

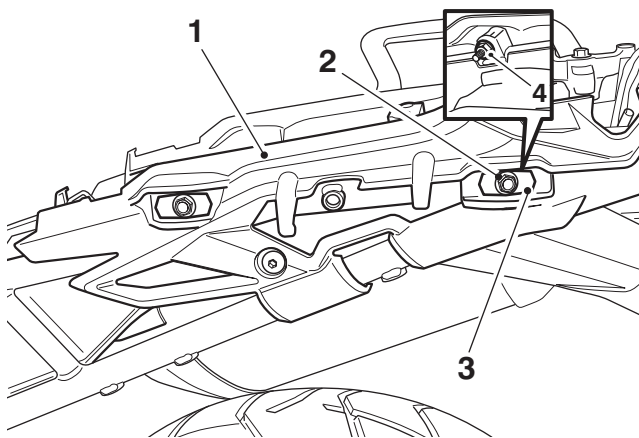
All Models

- Remove the right hand side panel lock nuts from the upper fixings. Remove the bolts and pannier mount plates. Retain the bolts for reuse if the motorcycle is returned to its original condition. Retain the pannier mount plates and lock nuts for reuse.



- Bolt**
- Lock nut**
- Pannier mounting plate**

- Remove the left hand side panel lock nut from the upper fixing. Remove the bolt and pannier mount plate. Retain the bolt for reuse if the motorcycle is returned to its original condition. Retain the pannier mount plate and lock nut for reuse.



T0883

- Side panel (left hand shown)**
- Bolt**
- Pannier mount plate**
- Lock nut**

Models fitted with Rear Side Reflectors

Notice

Failure to fit a reflector to each pannier mounting frame as shown may contravene the laws of your country, state or territory. This will render the motorcycle illegal for road use where such laws apply. Always fit reflectors as shown.

Notice

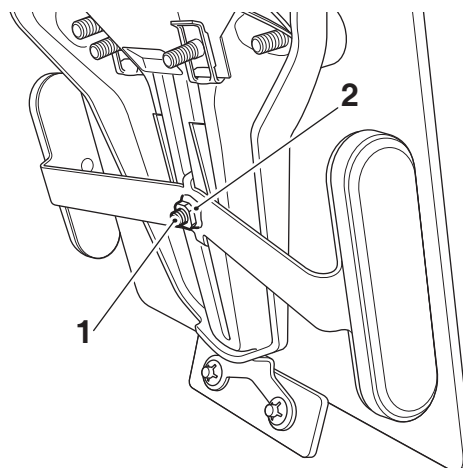
Do not fit a reflector to each pannier mounting frame in Japan as this will contravene Japanese law and render the motorcycle illegal for road use.

Caution

If for any reason the pannier mounting frames are removed, failure to fit the rear side reflectors may contravene the laws of your country, state or territory. This will render the motorcycle illegal for road use where such laws apply.

Always refit the rear side reflectors if they were fitted as original equipment.

- Undo and remove the rear side reflectors if fitted. Retain the reflectors, bracket and fixing for reuse if the motorcycle is to be returned to its original condition.

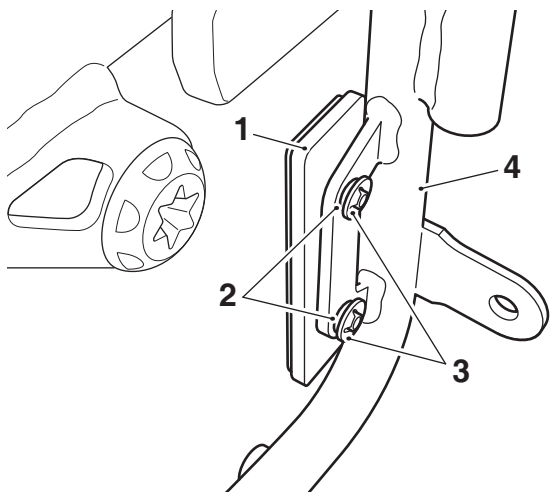


- Reflector bracket**
- Fixing**

Note:

- Ensure the reflectors are positioned facing outwards from the motorcycle.

2. Position the rear side reflectors from the kit to both pannier mounting frames and secure using the rubber O-rings and the retaining washers, as shown below.



1. Side reflector
2. O-ring
3. Retaining washer
4. Pannier mounting frame (right hand shown)

Models from VIN 716663

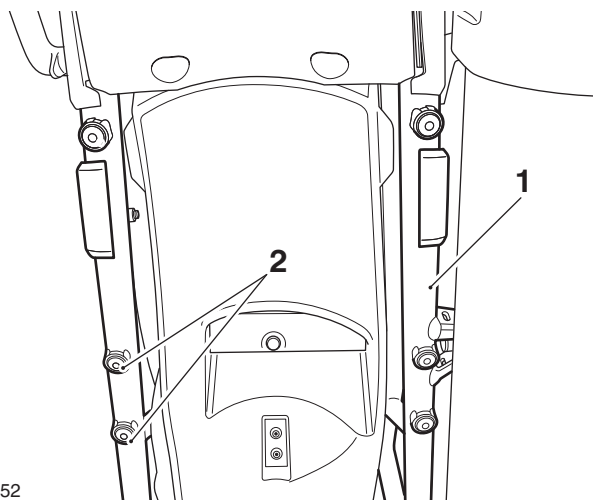
Note:

- A threaded fixed boss is fitted to the upper footrest tube.

Left Hand Pannier Mounting Frame

All Models

3. Remove the two blanking plugs from the left hand underside of the rear subframe. Retain the plugs if the motorcycle is to be returned to its original condition.



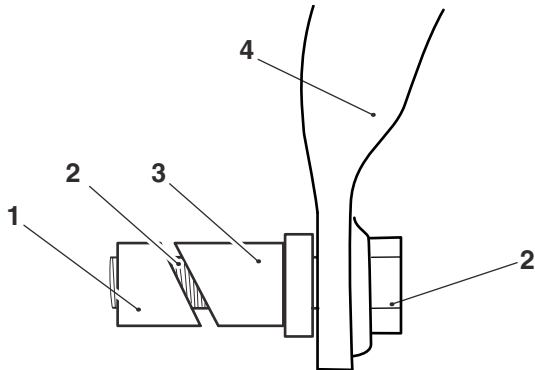
T0952

1. Rear subframe
2. Blanking plugs (left hand side)

Models up to VIN 716662

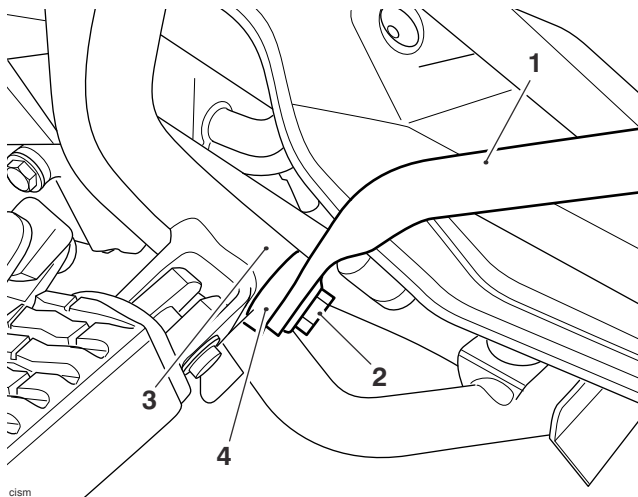
Note:

- The upper footrest tube does not have a threaded boss fitted.
4. Pre-assemble the threaded insert clamp to the lower mounting slot, as shown below.



1. Threaded insert clamp
2. Bolt, M8 x 65 mm
3. Shouldered insert clamp
4. Pannier mounting frame

5. Position the threaded insert clamp assembly to the upper passenger footrest tube, as shown below. Do not fully tighten at this stage.

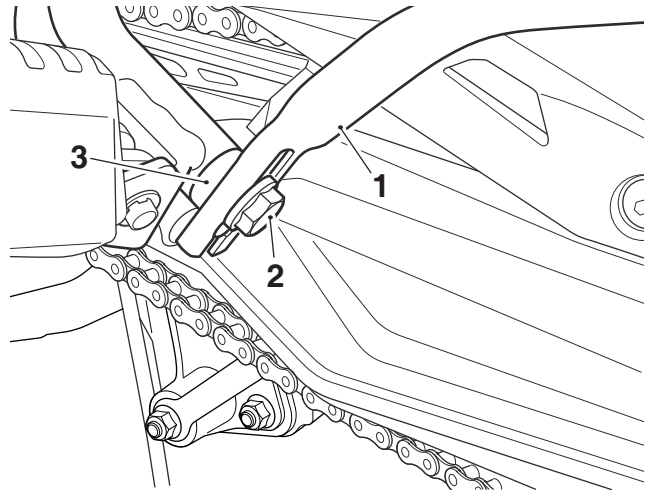


1. Pannier mounting frame
2. Bolt, M8 x 65 mm
3. Upper passenger footrest tube
4. Threaded insert clamp assembly

Models from VIN 716663

Note:

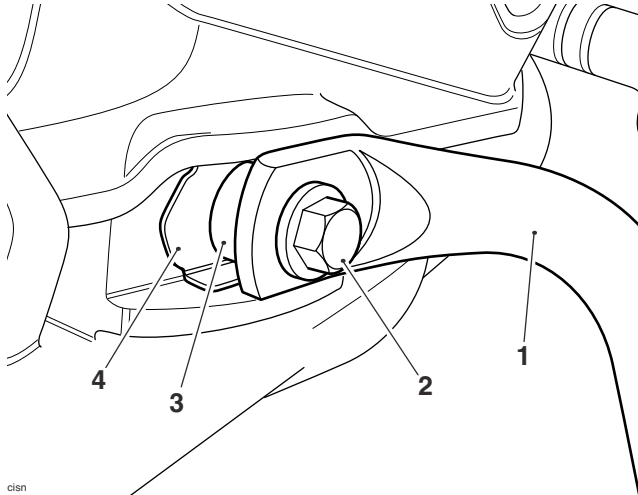
- A threaded fixed boss is fitted to the upper footrest tube.
6. Align the pannier mounting frame's lower mounting point to the upper footrest tube and secure using an M8 x 20 mm fixing. Do not fully tighten at this stage.



1. Pannier mounting frame
2. Bolt, M8 x 20 mm
3. Fixed boss

All Models

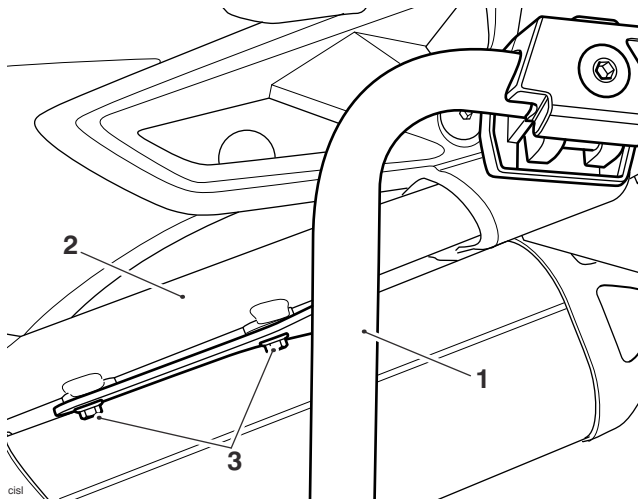
- Fit the pannier mounting plate removed previously with an M8 x 65 mm bolt and spacer from the kit to the upper mounting point, as shown below. Secure with a lock nut removed previously. Do not fully tighten the bolt at this stage.



cisn

- Pannier mounting frame
- Bolt
- Spacer
- Pannier mounting plate

- Align the pannier mounting frame to the rear subframe and secure with the two M6 x 16 mm fixings. Do not fully tighten at this stage.

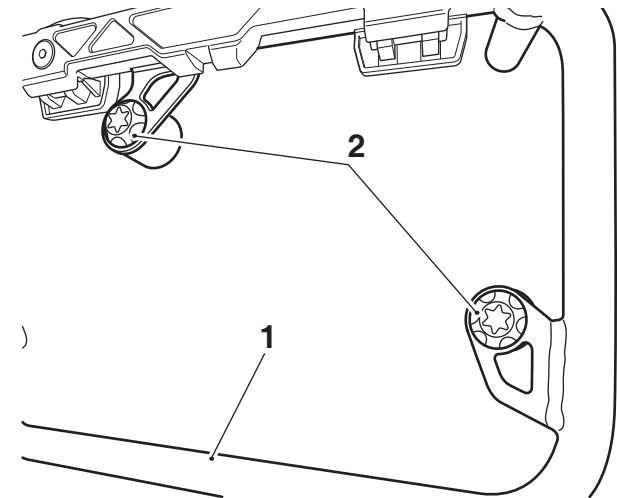


cisn

- Pannier mounting frame
- Subframe
- M6 x 16 mm fixings

Right Hand Pannier Mounting Frame

- Fit the two silencer rubbers to the right hand pannier mounting frame in the orientation shown below.

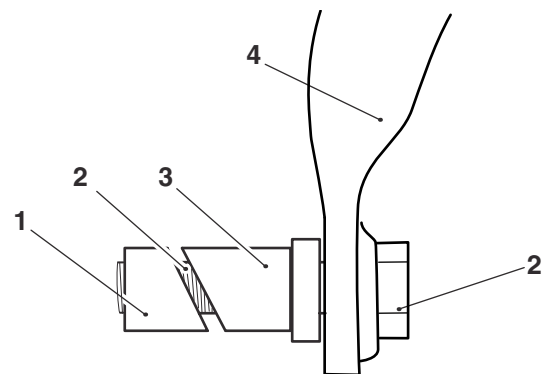


- Pannier mounting frame (right hand)
- Silencer rubbers

Models up to VIN 716662

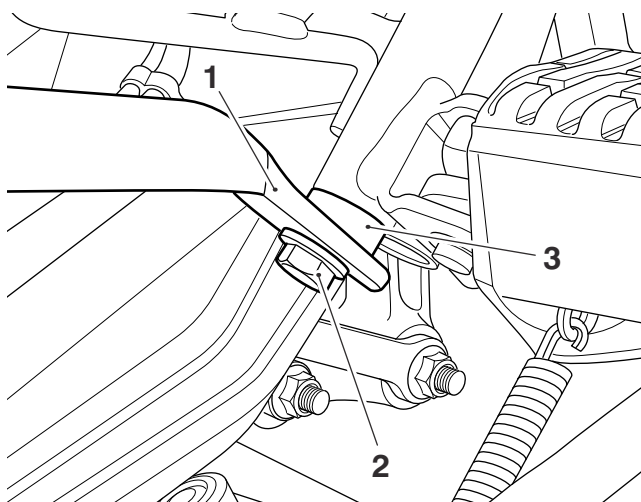
Note:

- The upper footrest tube does not have a threaded boss fitted.
- Pre-assemble the threaded insert clamp to the lower mounting slot, as shown below.



- Threaded insert clamp
- Bolt, M8 x 65 mm
- Shouldered insert clamp
- Pannier mounting frame

- Position the threaded insert clamp assembly to the upper footrest tube, as shown below. Do not fully tighten at this stage.

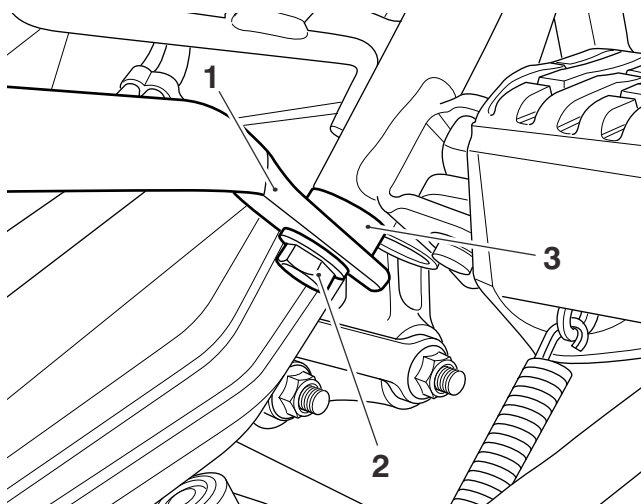


- Pannier mounting frame
- Bolt, M8 x 65 mm
- Threaded insert clamp assembly

Models from VIN 716663

Note:

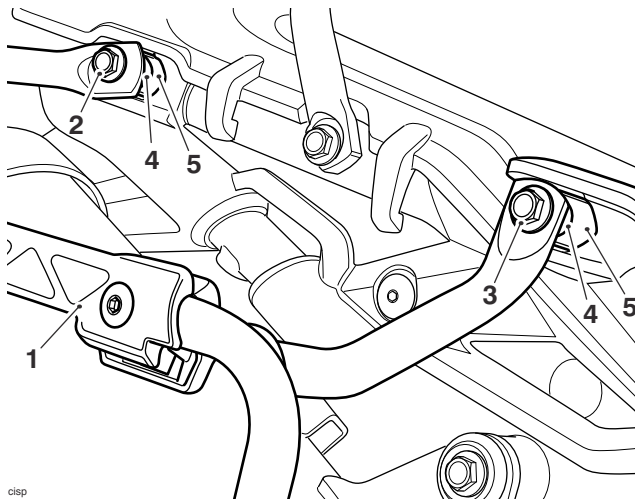
- A threaded fixed boss is fitted to the upper footrest tube.
- Align the pannier mounting frame's lower mounting point to the upper footrest tube and secure using an M8 x 20 mm fixing. Do not fully tighten at this stage.



- Pannier mounting frame
- Bolt, M8 x 20 mm
- Fixed boss

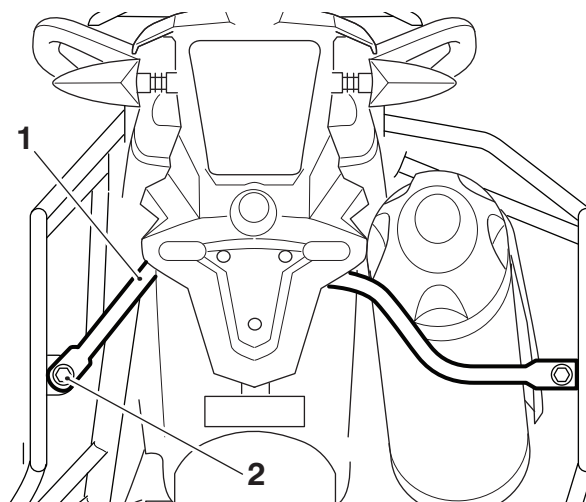
All Models

- Fit the pannier mounting plates removed previously with the M8 x 65 mm bolt and spacers from the kit to the upper mounting points, as shown below. Secure using the lock nuts removed previously. Do not fully tighten the bolts at this stage.



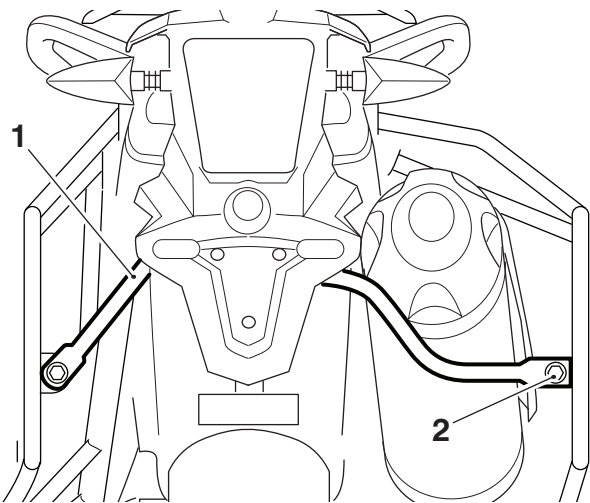
- clisp
- Pannier mounting frame
 - Bolt, M8 x 65 mm (front)
 - Bolt, M8 x 65 mm (rear)
 - Spacer
 - Pannier mounting plate

- Locate the pannier link bar to the left hand pannier mounting frame and secure using the M8 nut and M8 x 20 mm bolt. Do not fully tighten at this stage.



- Pannier link bar
- Bolt, M8 x 20 mm

7. Locate the pannier link bar to the right hand pannier mounting frame and secure using the remaining M8 nut and M8 x 20 mm bolt. Do not fully tighten at this stage.



1. Pannier link bar
2. Bolt, M8 x 20 mm

8. Tighten all fixings as follows:
 - Tighten the left hand pannier mounting frame's two M6 x 20 mm fixings to **12 Nm**.
 - Tighten the left hand pannier mounting frame's upper and lower bolts to **20 Nm**.
 - Tighten the right hand pannier mounting frame's upper and lower bolts to **20 Nm**.
 - Tighten the pannier link bar bolts to **12 Nm**.
9. Refit the rear rack, refer to the Service Manual.
10. Refit the rider's seat, refer to the Service Manual.

Replacement Tyres

Note:

- A list of approved tyres specific to these models is available from your authorised Triumph dealer, or on the internet at www.triumph.co.uk.



Warning

Use the recommended tyres ONLY in the combinations given. Do not mix tyres from different manufacturers or mix different specification tyres from the same manufacturers as this may result in loss of motorcycle control and an accident.



Warning

Never ride an accessory-equipped motorcycle, or a motorcycle carrying a payload of any kind, at speeds above 80 mph (130 km/h). In either/both of these conditions, speeds in excess of 80 mph (130 km/h) should not be attempted even where the legal speed limit permits this.

The presence of accessories and/or payload will cause changes in the stability and handling of the motorcycle.

Failure to allow for changes in motorcycle stability may lead to loss of motorcycle control or an accident.

When riding at high speed, always be aware that various motorcycle configurations and environmental factors can adversely affect the stability of your motorcycle. For example:

- Incorrectly balanced loads on both sides of the motorcycle
- Incorrectly adjusted front and rear suspension settings
- Incorrectly adjusted tyre pressures
- Excessively or unevenly worn tyres
- Side winds and turbulence from other vehicles
- Loose clothing.

Remember that the 80 mph (130 km/h) absolute limit will reduce by the fitting of non-approved accessories, incorrect loading, worn tyres, overall motorcycle condition and poor road or weather conditions.



Warning

This motorcycle must not be operated above the legal road speed limit except in authorised closed-course conditions.



Warning

Only operate this Triumph motorcycle at high speed in closed-course, on-road competition or on closed-course racetracks. High-speed operation should only be attempted by riders who have been instructed in the techniques necessary for high-speed riding and are familiar with the motorcycle's characteristics in all conditions.

High-speed operation in any other circumstances is dangerous and will lead to loss of motorcycle control and an accident.



Warning

If, after fitment of this accessory kit, you have any doubt about the performance of any aspect of the motorcycle, contact an authorised Triumph dealer and do not ride the motorcycle until the authorised dealer has declared it fit for use. Riding a motorcycle when there is any doubt as to any aspect of the performance of the motorcycle may result in loss of control of the motorcycle leading to an accident.



Warning

Never ride an accessory-equipped motorcycle at speeds above 80 mph (130 km/h).

The presence of accessories will cause changes in the stability and handling of the motorcycle. Failure to allow for changes in motorcycle stability may lead to loss of control or an accident.

Remember that the 80 mph (130 km/h) limit will be reduced by the fitting of non-approved accessories, incorrect loading, worn tyres, overall motorcycle condition and poor road or weather conditions.