



Accessory Fitting Instructions

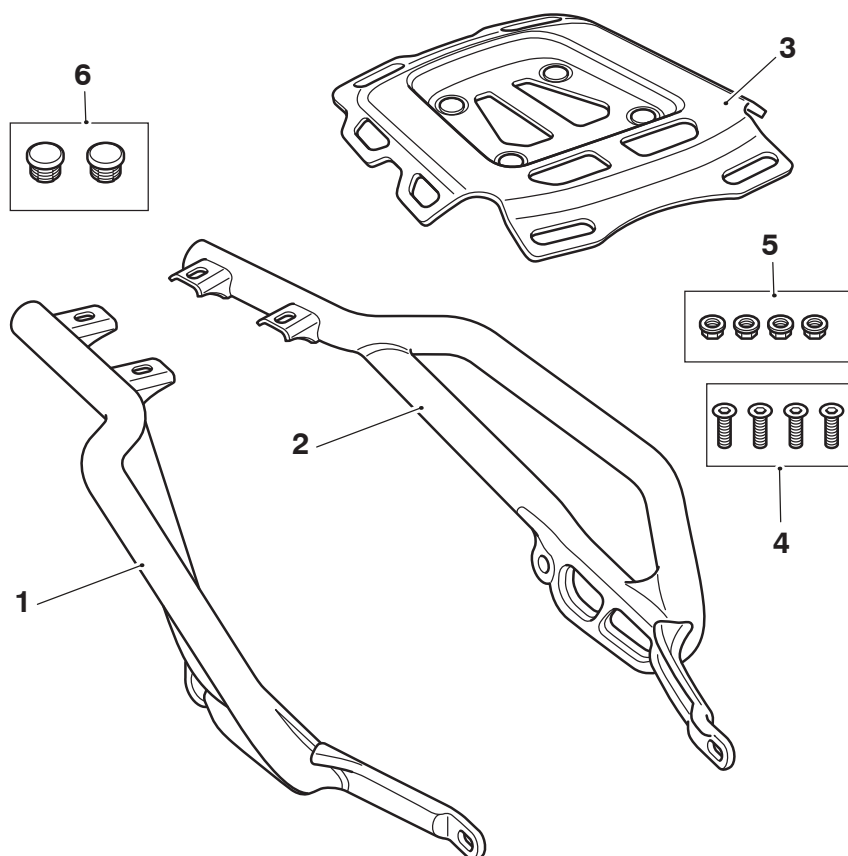
Thank you for choosing this Triumph genuine accessory kit. This accessory kit is the product of Triumph's use of proven engineering, exhaustive testing, and continuous striving for superior reliability, safety and performance.

Completely read all of these instructions before commencing the installation of the accessory kit in order to become thoroughly familiar with the kit's features and the installation process.

These instructions should be considered a permanent part of your accessory kit, and should remain with it even if your accessory equipped motorcycle is subsequently sold.

| Grab Rail and Rack Kit | |
|------------------------|--|
| Kit Number | Models |
| A2307151 | Scrambler 1200 XC, Scrambler 1200 XE, Scrambler 1200 X |

Parts supplied



| | | | |
|--------------------------|-------|-----------------------|-------|
| 1. Grab rail, right hand | 1 off | 4. Fixing, M6 x 20 mm | 4 off |
| 2. Grab rail, left hand | 1 off | 5. Nut, M6 | 4 off |
| 3. Rack | 1 off | 6. Plastic plug | 2 off |

⚠ WARNING

Fit only genuine Triumph accessories to those models approved by Triumph as listed in the associated Triumph fitting instructions.

The accessory kits covered in this instruction are designed for use on specific models of Triumph motorcycle. The accessory kits and the models applicable are listed at the start of the instruction. They should never be fitted to any other Triumph model or to any other manufacturer's motorcycle.

Fitting an accessory kit to a Triumph model not listed, or to any other manufacturer's motorcycle, will affect the performance, stability and handling of the motorcycle.

Failure to follow the advice above may lead to loss of motorcycle control which could result in serious injury or death.

⚠ WARNING

Always have Triumph approved parts, accessories and conversions fitted by a competent person with the specialist knowledge and technical understanding of motorcycles, such as an authorised Triumph dealer.

The fitment of parts, accessories and conversions by a person without the specialist knowledge and technical understanding of motorcycles may affect the handling, stability or other aspects of the motorcycle's operation.

Failure to follow the advice above may lead to loss of motorcycle control which could result in serious injury or death.

⚠ WARNING

A torque wrench of known accurate calibration must be used when fitting this accessory kit.

Failure to tighten any of the fasteners to the correct torque specification may affect motorcycle performance, handling and stability.

Failure to follow the advice above may lead to loss of motorcycle control which could result in serious injury or death.

⚠ WARNING

Make sure the motorcycle is stabilised and adequately supported.

Do not support the motorcycle on any ancillary component, the exhaust system or any other non structural parts of the motorcycle frame.

A correctly supported motorcycle will help prevent it from falling.

An unstable motorcycle may fall resulting in motorcycle damage, serious injury or death.

NOTICE

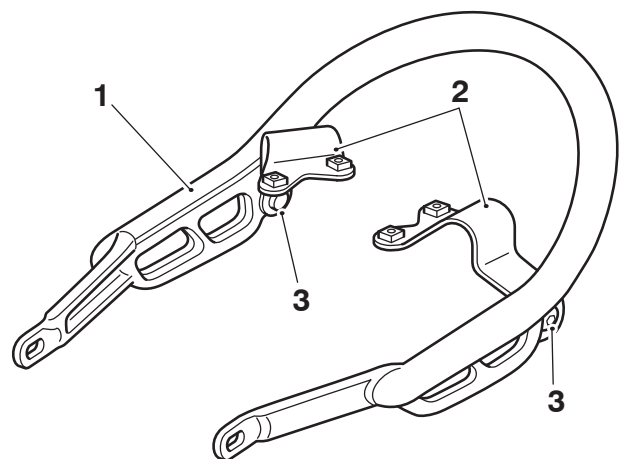
Triumph offers a broad range of approved genuine accessories for your motorcycle.

We cannot therefore cover all possible equipment variations in these instructions. For removal and installation of Triumph Genuine Accessories, always refer to the instructions supplied with the respective accessory kit.

To obtain additional copies of any Triumph accessory instructions, visit www.triumphinstructions.com or contact your authorised Triumph dealer.

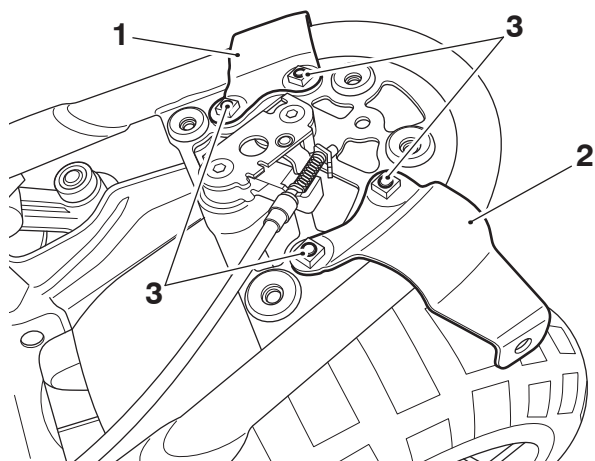
Fitment of the Grab Rail and Rack

1. Remove the seat, as described in the Service Manual.
2. Remove the seat undertray as described in the Service Manual.
3. Disconnect the battery, as described in the Service Manual.
4. Remove the rear mudguard, as described in the Service Manual. Retain the mudguard and fixings for reuse.
5. Remove the grab rail as described in the Service Manual. Retain all fixings for reuse.
6. Remove the grab rail left hand and right hand rear mounting brackets from the grab rail. Retain the mounting brackets and fixings for reuse. Retain the grab rail for reuse if the motorcycle is to be returned to its original condition.



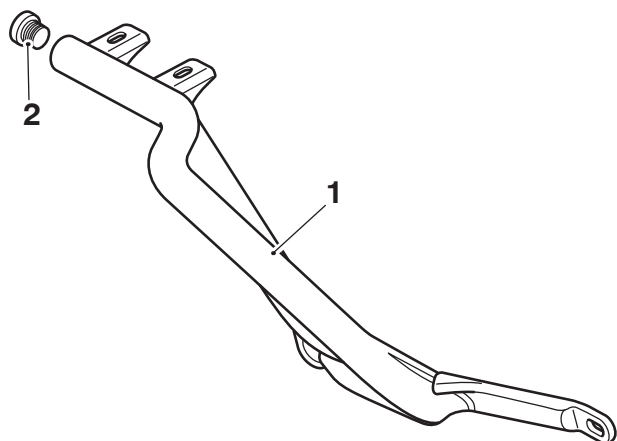
1. Grab rail
2. Mounting brackets
3. Fixings

- Refit the left hand and right hand grab rail rear mounting brackets with the original fixings. Tighten the fixings to **10 Nm**.



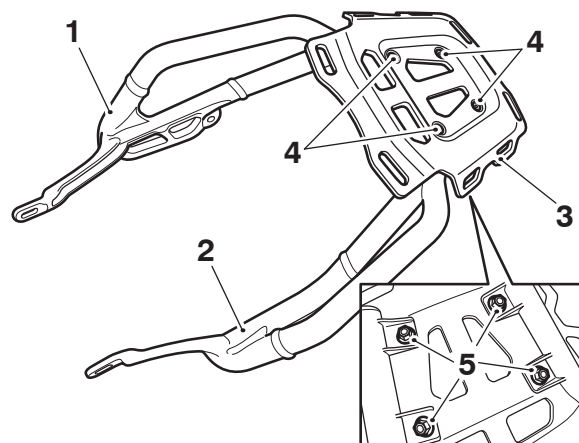
- Grab rail mounting bracket, right hand
- Grab rail mounting bracket, left hand
- Fixings

- Collect the left hand and right hand grab rails, rack, M6 x 20 mm fixings, nuts and plastic plugs from the kit.
- Fit the plastic plugs into the left hand and right hand grab rails.



- Grab rail, right hand shown
- Plastic plug

- Assemble the grab rails and rack with the M6 x 20 mm fixings and nuts, as shown below. Do not fully tighten the fixings at this stage.

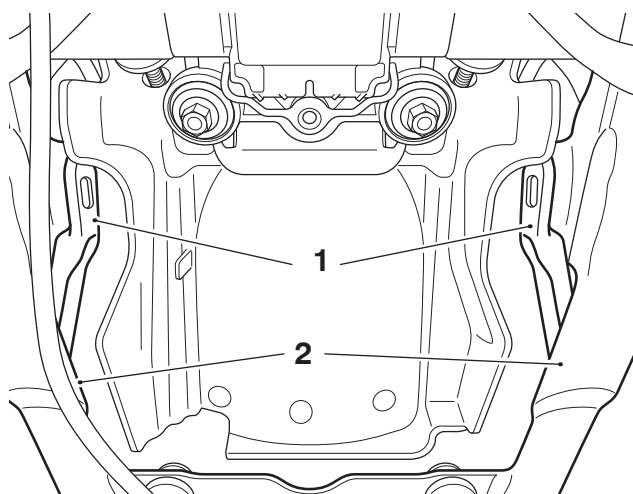


- Grab rail, right hand
- Grab rail, left hand
- Rack
- Fixings, M6 x 20 mm
- Nuts, M6

⚠ CAUTION

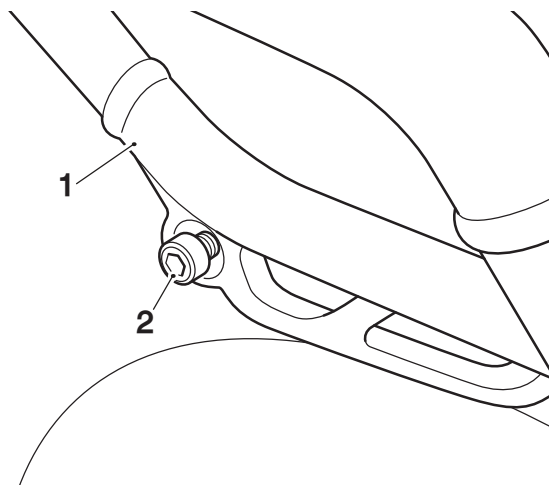
Care should be taken to ensure the grab rail and rack does not contact any part of the motorcycle frame when it is positioned inside the frame. If the grab rail and rack is allowed to contact the motorcycle frame it could result in damage to the paintwork.

- Carefully fit the front grab rail and rack mountings inside the motorcycle and align with the mountings provided in the motorcycle frame.



- Grab rail and rack
- Motorcycle frame

12. Align the rear grab rail and rack fixing points with the left hand and right hand grab rail rear mounting brackets. Fit the original fixings. Do not fully tighten the fixings at this point.

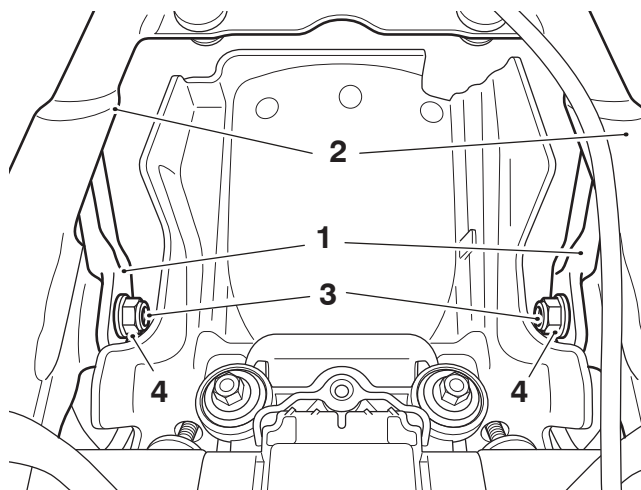


1. Grab rail and rack, right hand side shown
2. Fixing

NOTICE

Lock nuts can be re-used providing resistance can be felt when the locking portion passes over the thread of the bolt or stud. Always use the correct replacement lock nut as recommended in the Triumph parts catalogue.

13. Fit the original fixings through the motorcycle frame and front mountings of the grab rail and rack on the left hand and right hand side. Fit the original lock nuts or replace the lock nuts if resistance is not felt when tightening. Do not fully tighten the fixings at this point.



1. Grab rail and rack
2. Motorcycle frame
3. Fixings
4. Lock nuts

14. Tighten the front and rear grab rail fixings to **28 Nm**.
15. Tighten the M6 x 20 mm rack fixings to **8 Nm**.
16. Refit the rear mudguard, using the original fixings, as described in the Service Manual.
17. Reconnect the battery, as described in the Service Manual.
18. Refit the seat undertray, as described in the Service Manual.
19. Refit the seat, as described in the Service Manual.

⚠ WARNING

Always ensure that any load carried on the luggage rack is correctly secured such that it will not move around while the motorcycle is in motion.

An adhesive label on the luggage rack details the maximum safe load for the luggage rack, which is 3 kg (6.6 lbs).

Incorrect loading may result in an unsafe riding condition.

Failure to follow the advice above could result in serious injury or death.

⚠ WARNING

After fitting the accessory kit the motorcycle will exhibit new handling characteristics.

Operate the motorcycle in a safe area free from traffic to gain familiarity with any new characteristics.

Operation of the motorcycle when not familiar with any new handling characteristics may lead to loss of motorcycle control which could result in serious injury or death.

⚠ WARNING

If, after fitting this accessory kit, you have any doubt about the performance of any aspect of the motorcycle, contact a competent person with the specialist knowledge and technical understanding of motorcycles, such as an authorised Triumph dealer.

Riding a motorcycle when there is any doubt as to any aspect of the performance of the motorcycle may lead to loss of motorcycle control which could result in serious injury or death.

⚠ WARNING

Never ride an accessory-equipped motorcycle at speeds above 80 mph (130 km/h).

Remember that the 80 mph (130 km/h) limit will be reduced by the fitting of non-approved accessories, incorrect loading, worn tyres, overall motorcycle condition and poor road or weather conditions.

The presence of accessories will cause changes in the stability and handling of the motorcycle. Failure to allow for changes in motorcycle stability may lead to loss of motorcycle control which could result in serious injury or death.

⚠ WARNING

High-speed operation should only be attempted by riders who have been instructed in the techniques necessary for high-speed riding and are familiar with the motorcycle's characteristics in all conditions.

Only operate this Triumph motorcycle at high speed in closed-course, on-road competition or on closed-course racetracks.

High-speed operation in any other circumstances is dangerous and may lead to loss of motorcycle control which could result in serious injury or death.

NOTICE

The motorcycle must not be operated above the legal road speed limit except in closed-course conditions.