



## Accessory Fitting Instructions

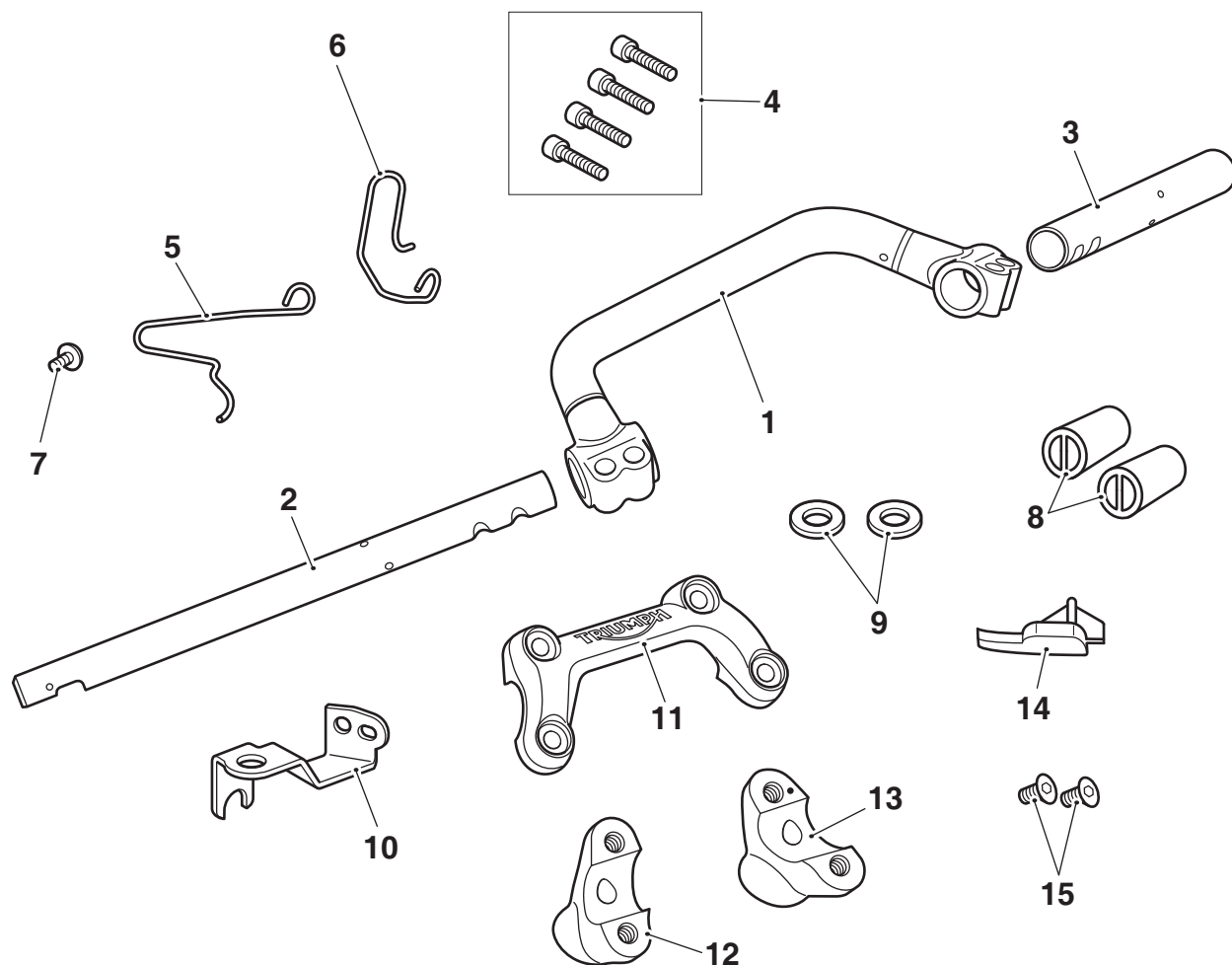
Ace Handlebar Kit	
Kit number	Models Affected
A2043219	Street Twin up to VIN 914972

Thank you for choosing this Triumph genuine accessory kit. This accessory kit is the product of Triumph's use of proven engineering, exhaustive testing, and continuous striving for superior reliability, safety and performance.

Completely read all of these instructions before commencing the installation of the accessory kit in order to become thoroughly familiar with the kit's features and the installation process.

These instructions should be considered a permanent part of your accessory kit, and should remain with it even if your accessory equipped motorcycle is subsequently sold.

Parts supplied



1.	Handlebar, centre	1 off	9.	Washer (brake line)	2 off
2.	Handlebar, right hand	1 off	10.	Bracket, master cylinder	1 off
3.	Handlebar, left hand	1 off	11.	Handlebar clamp	1 off
4.	Fixing, M6 x 25 mm	4 off	12.	Riser, left hand	1 off
5.	Cable guide, right hand	1 off	13.	Riser, right hand	1 off
6.	Cable guide, left hand	1 off	14.	Plastic plug	1 off
7.	Fixing, M6 x 12 mm	1 off	15.	Fixing, M6 x 14 mm	2 off
8.	End plug	2 off			



### Warning

The accessory kits covered in this instruction are designed for use on specific models of Triumph motorcycle. The accessory kits and the models applicable are listed at the start of the instruction. They should not be fitted to any other Triumph model or to any other manufacturer's motorcycle. Fitting an accessory kit to a Triumph model not listed, or to any other manufacturer's motorcycle will affect the performance, stability and handling of the motorcycle. This may affect the rider's ability to control the motorcycle and may result in loss of motorcycle control and an accident.



### Warning

Always have Triumph approved parts, accessories and conversions fitted by a trained technician of an authorised Triumph dealer. The fitment of parts, accessories and conversions by a technician who is not of an authorised Triumph dealer may affect the handling, stability or other aspects of the motorcycle's operation which may result in loss of motorcycle control and an accident.



### Warning

Throughout this operation, ensure that the motorcycle is stabilised and adequately supported to prevent risk of injury from the motorcycle falling.



### Warning

A torque wrench of known accurate calibration must be used when fitting this accessory kit. Failure to tighten any of the fasteners to the correct torque specification may affect motorcycle performance, handling and stability. This may result in loss of motorcycle control and an accident.

#### Note:

- Triumph offers a broad range of approved genuine accessories for your motorcycle. We cannot therefore cover all possible equipment variations in these instructions. For removal and installation of Triumph Genuine Accessories, always refer to the instructions supplied with the respective accessory kit. To obtain additional copies of any Triumph accessory instructions, visit [www.triumphinstructions.com](http://www.triumphinstructions.com) or contact your authorised Triumph dealer.

1. Remove the seat, as described in the Service Manual.
2. Disconnect the battery, negative (black) lead first.

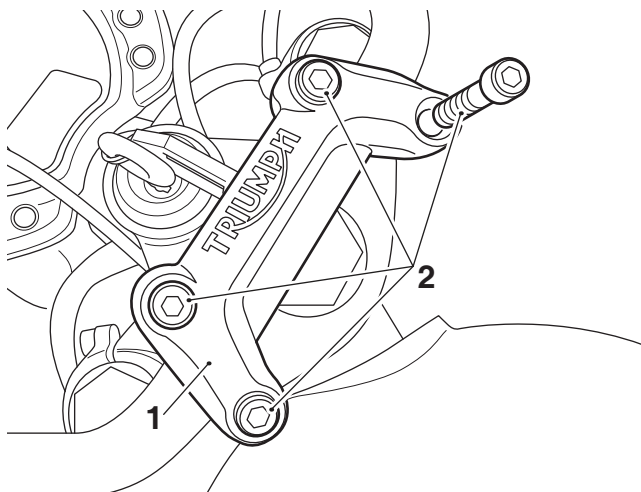


### Caution

To prevent damage, ensure that any displaced brake fluid does not come into contact with any part of the bodywork.

3. Drain the brake fluid from the front master cylinder. Attach a tube to the right hand brake caliper bleed nipple. Release the bleed nipple and allow the brake fluid to drain into a suitable container. Pull and release the brake lever until all fluid has been expelled from the master cylinder.
4. Remove the front brake line fixing from the master cylinder, placing a cloth under the hose connection to absorb any remaining fluid which may be displaced. Retain the fixing for reuse, discard the washers.
5. Remove the clutch cable from the clutch lever assembly, as described in the Service Manual.
6. Remove the following components from the handlebars, as described in the Service manual. Ensure all parts are suitably supported and do not damage the motorcycle.
  - Bar end finishers.
  - Clutch lever assembly.
  - Brake lever, master cylinder and fluid reservoir assembly.
  - Left hand and right hand switch housings.
  - Left hand and right hand handlebar grips.
  - Twist grip position sensor.
7. Loosen the riser fixings on the underside of the top yoke. Do not remove the fixings at this stage.

8. Remove the handlebar clamp and fixings. Retain the handlebar clamp for reuse if the motorcycle is to be returned to its original condition. Retain the fixings for reuse.

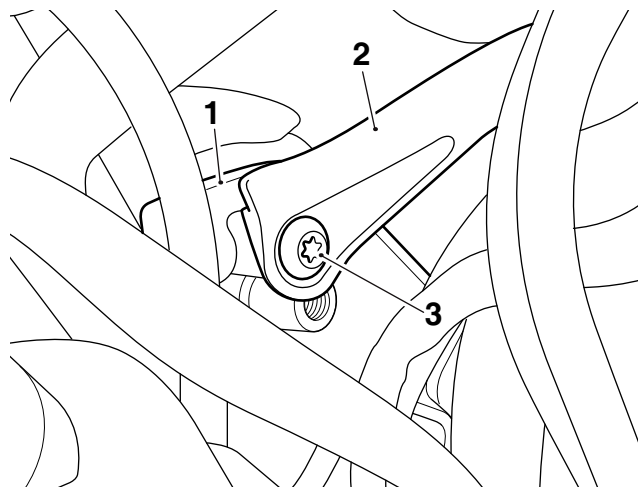


**1. Handlebar clamp**

**2. Fixings**

9. Remove the handlebars from the risers. Retain the handlebars for reuse if the motorcycle is to be returned to its original condition.
10. Remove the risers. Note the position of the fixings, washers, rubber bushes and sleeves to aid reassembly. Retain the risers for reuse if the motorcycle is to be returned to its original condition, retain the fixings, washers, rubber bushes and sleeves for reuse.
11. Remove the headlight fixings as described in the Service Manual. Carefully lower the headlight and ensure it is supported. Retain the fixings for reuse.
12. Remove the upper yoke as described in the Service Manual.

13. Remove the cable guide from the left hand headlight mounting bracket. Retain the cable guide for reuse if the motorcycle is to be returned to its original condition. Retain the fixings for reuse.

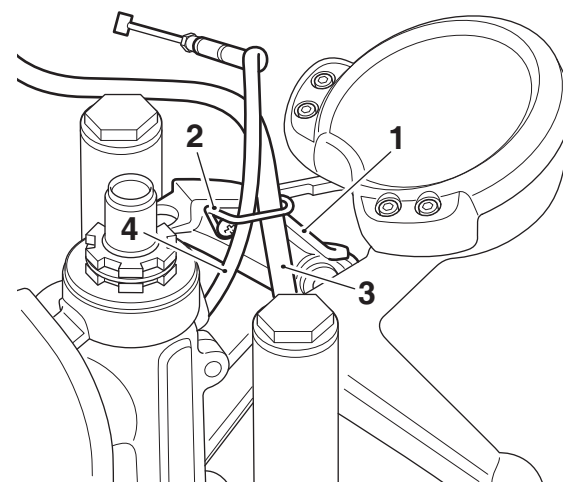


**1. Headlight mounting bracket**

**2. Cable guide**

**3. Fixing**

14. Fit the left hand switch harness and clutch cable through the left hand cable guide provided in the kit and fit the guide to the left hand headlight mounting bracket in the orientation shown. Fit the original fixings and tighten to **3 Nm**.



**1. Headlight mounting bracket, left hand**

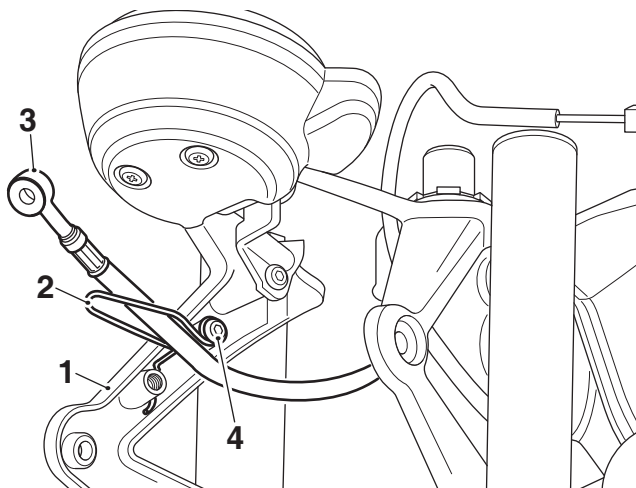
**2. Cable guide**

**3. Switch harness, left hand**

**4. Clutch cable**

### Models Without an Accessory Flyscreen Fitted

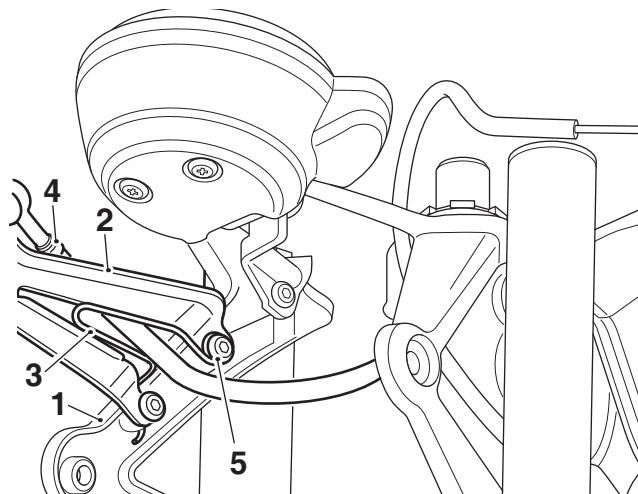
15. Collect the right hand cable guide from the kit. Route the brake line under the clutch cable and through the cable guide. Fit the right hand cable guide to the right hand headlight mounting bracket as shown below. Secure with the M6 x 12 mm fixing provided in the kit. Tighten the fixing to **3 Nm**.



1. Headlight mounting bracket, right hand
2. Cable guide
3. Brake line
4. Fixing, M6 x 12 mm

### Models With an Accessory Flyscreen Fitted

16. Remove the upper fixing securing the right hand flyscreen mounting bracket to the headlight mounting bracket. Discard the fixing.
17. Collect the right hand cable guide from the kit. Route the brake line under the clutch cable and through the cable guide. Locate the right cable guide on the right hand flyscreen bracket, as shown. Secure the cable guide and flyscreen bracket to the headlight mounting bracket with the M6 x 12 mm fixing provided. Tighten the fixing to **3 Nm**.



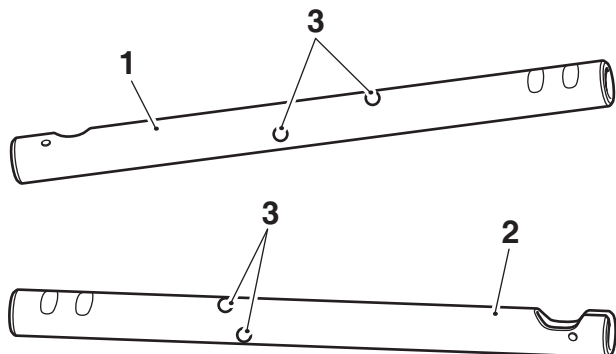
1. Headlight mounting bracket, right hand
2. Flyscreen mounting bracket
3. Cable guide
4. Brake line
5. Fixing, M6 x 12 mm

### All Models

18. Refit the upper yoke as described in the Service Manual.
19. Refit the headlight with the original fixings. Align the headlight as described in the Service Manual and tighten the fixings to **10 Nm**.
20. Collect the left hand, right hand and centre sections of the new handlebars together with the M6 x 25 mm fixings from the kit.

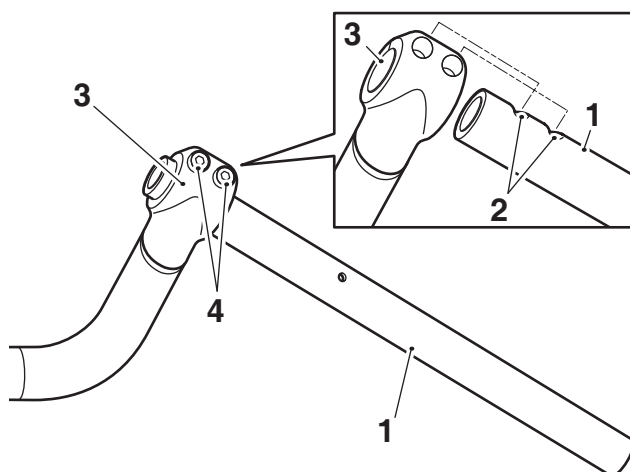
**Note:**

- The left hand and right hand handlebars are identified by the position of the two holes in the handlebars. The right hand handlebar has the holes closer together, as shown.



1. Handlebar, left hand
2. Handlebar, right hand
3. Holes

21. Fit the right hand handlebar in to the clamp on the right hand side of the centre section. The two recesses at the end of the handlebar must be positioned towards the front and align with the fixing positions in the clamp, as shown. Ensure the alignment mark on the handlebar is in line with the clamp split line. Fit two of the M6 x 25 mm fixings provided and tighten to **8.5 Nm**.



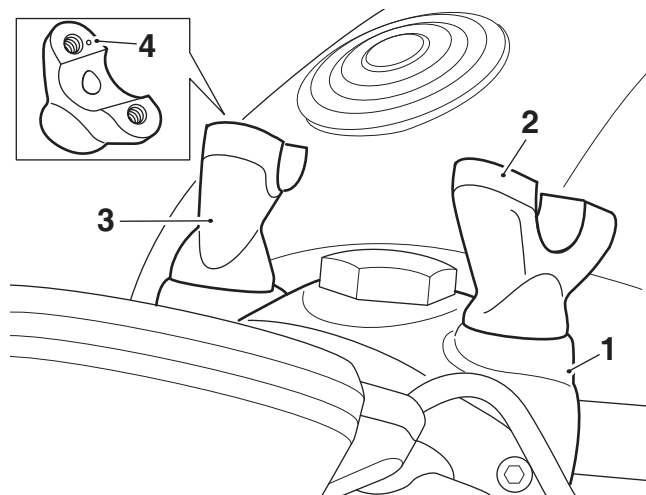
1. Handlebar, right hand
2. Recesses
3. Centre section clamp
4. Fixings

22. Repeat step 21 for the left hand handlebar.

**Note:**

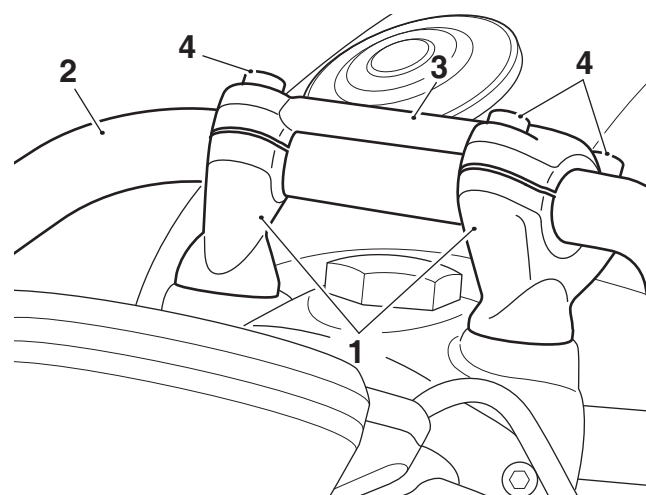
- **The right hand riser is identified by the identification mark shown below.**

23. Fit the left hand and right hand risers provided in the kit on to the upper yoke in the orientation shown. Fit the original riser fixings, washers, rubbers bushes and sleeves in the order noted on removal in step 10, do not fully tighten the fixings at this stage.



1. Upper yoke
2. Riser, left hand
3. Riser, right hand
4. Identification mark

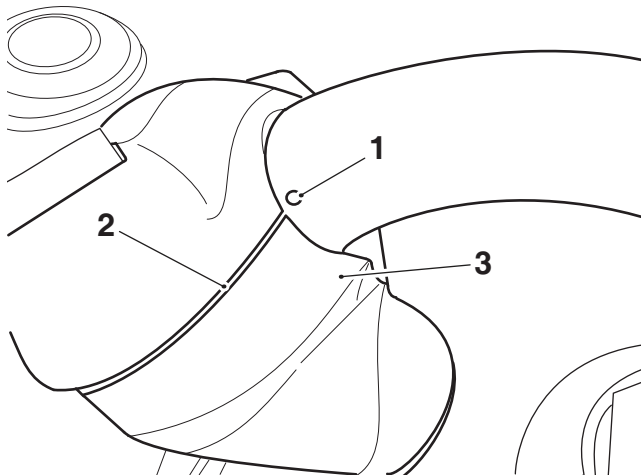
24. Position the handlebar assembly centrally on to the risers. Fit the handlebar clamp provided in the kit on to the risers and secure with the original fixings. Do not fully tighten the fixings at this stage.



1. Risers
2. Handlebar
3. Handlebar clamp
4. Fixings

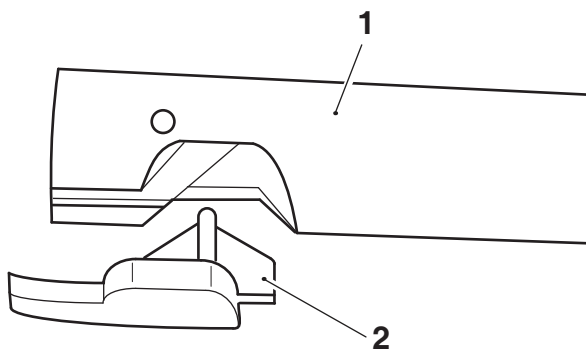
25. Tighten the riser to upper yoke fixings to **38 Nm**.

26. Align the mark on the handlebar centre section with the front split line of the clamp and left hand riser, as shown. First tighten the front handlebar clamp fixings to **24 Nm**, then tighten the rear fixings to **24 Nm**.



1. Alignment mark, handlebars  
2. Split line, riser/clamp  
3. Riser, left hand

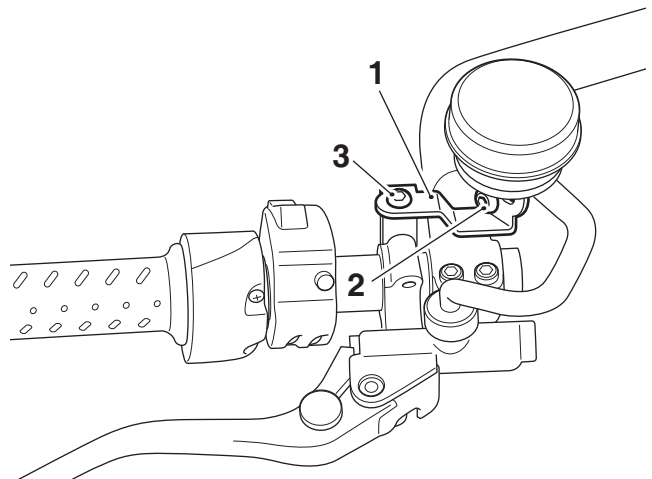
27. If refitting the standard handlebar grips, fit the plastic plug provided in the kit into the slot in the left hand handlebar.



1. Handlebar, left hand  
2. Plastic plug

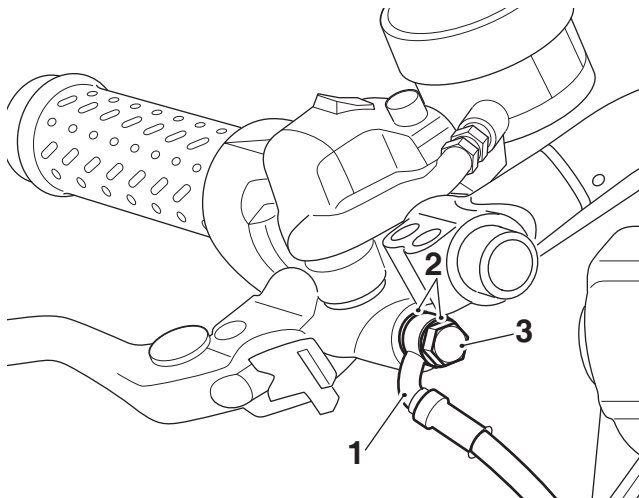
28. Refit the following components as described in the Service Manual
- Left hand and right hand switch housings.
  - Clutch lever assembly.
  - Clutch cable.
  - Brake lever, master cylinder and fluid reservoir assembly.
  - Twist grip position sensor.
  - Left hand and right hand handlebar grips.

29. Refit the bar end finishers. If bar end mirrors are fitted use the fixings from the bar end mirror kit, if bar end mirrors are not fitted use the M6 x 14 mm fixings provided in the kit. Apply thread lock to the fixings and tighten to **5 Nm**.
30. Remove the brake fluid reservoir mounting bracket. Retain the fixings for reuse. Retain the mounting bracket for reuse if the motorcycle is to be returned to its original condition.
31. Fit the brake fluid reservoir mounting bracket provided in the kit to the master cylinder, as shown below.
- Secure by fitting the original mirror, as described in the Service Manual.
  - If bar end mirrors are fitted, secure with the original fixing and tighten to **5 Nm**.
32. Fit the brake fluid reservoir on to the new mounting bracket, as shown below and secure with the original fixing. Tighten to **8 Nm**.



1. Reservoir bracket  
2. Fixing, reservoir  
3. Fixing, master cylinder

33. Refit the brake line with the original fixing and new washers provided in the kit. Ensure the brake line remains in the orientation shown below while the fixing is tightened. Tighten the fixing to **25 Nm**.



1. Brake line  
2. Washers  
3. Fixing



### Warning

Use only DOT 4 specification brake fluid as specified in the service manual. The use of brake fluids other than those DOT 4 fluids listed in the service manual may reduce the efficiency of the braking system and may result in loss of motorcycle control and an accident.



### Warning

Ensure absolute cleanliness when adding brake fluid to the brake fluid reservoir. Do not allow moisture or debris to enter the cylinder as this will adversely affect the fluid properties. Always use fluid from a sealed container and do not use fluid from a container which has been opened for any period of time. Always check for fluid leakage around hydraulic fittings and for damage to hoses. A dangerous riding condition leading to an accident could result if this warning is ignored.

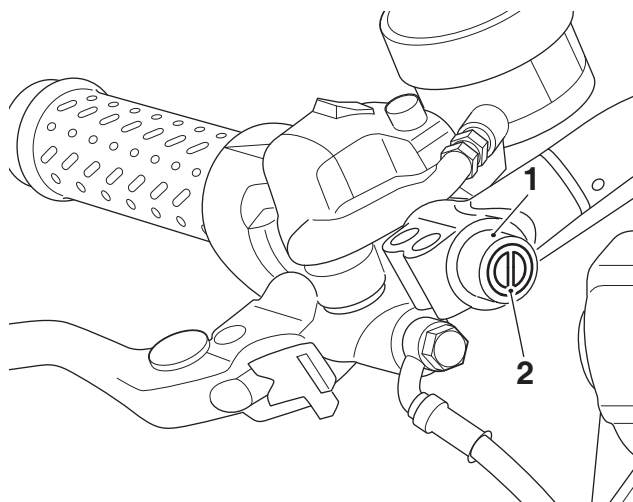
34. Fill the brake fluid reservoir with new DOT 4 brake fluid and bleed the front brakes, as described in the Service Manual.
35. To inspect the brake fluid level, check the level of fluid visible in the window on the brake fluid reservoir.
36. Examine the brake system for correct operation and fluid leaks. Rectify as necessary.



### Warning

It is dangerous to operate the motorcycle with defective brakes; you must have your authorised Triumph dealer take remedial action before you ride the motorcycle again. Failure to take remedial action may result in reduced braking efficiency which may result in loss of motorcycle control and an accident.

37. Fit the blanking plugs provided into the handlebars as shown.



1. Handlebars, right hand shown  
2. Blanking plugs

38. Reconnect the battery, positive (red) lead first and tighten the battery terminals to **4.5 Nm**.
39. Refit the seat, as described in the Service Manual.



### Warning

Move the handlebars to left and right full lock while checking that handlebars do not contact the fuel tank or restrict the steering. Any restriction in steering may result in loss of motorcycle control and an accident.



### Warning

Move the handlebars to left and right full lock while checking that cables and harnesses do not bind. Cables or harnesses that bind will restrict the steering and may result in loss of motorcycle control and an accident.





### Warning

If, after fitting this accessory kit, you have any doubt about the performance of any aspect of the motorcycle, contact an authorised Triumph dealer and do not ride the motorcycle until the authorised dealer has declared it fit for use. Riding a motorcycle when there is any doubt as to any aspect of the performance of the motorcycle may result in loss of motorcycle control and an accident.



### Warning

Never ride an accessory-equipped motorcycle at speeds above 80 mph (130 km/h).

The presence of accessories will cause changes in the stability and handling of the motorcycle. Failure to allow for changes in motorcycle stability may result in loss of motorcycle control and an accident.

Remember that the 80 mph (130 km/h) limit will be reduced by the fitting of non-approved accessories, incorrect loading, worn tyres, overall motorcycle condition and poor road or weather conditions.



### Warning

The motorcycle must not be operated above the legal road speed limit except in closed-course conditions.



### Warning

Only operate this Triumph motorcycle at high speed in closed-course, on-road competition or on closed-course racetracks. High-speed operation should only be attempted by riders who have been instructed in the techniques necessary for high speed riding and are familiar with the motorcycle's characteristics in all conditions.

High-speed operation in any other circumstances is dangerous and may result in loss of motorcycle control and an accident.