

Accessory Fitting Instructions

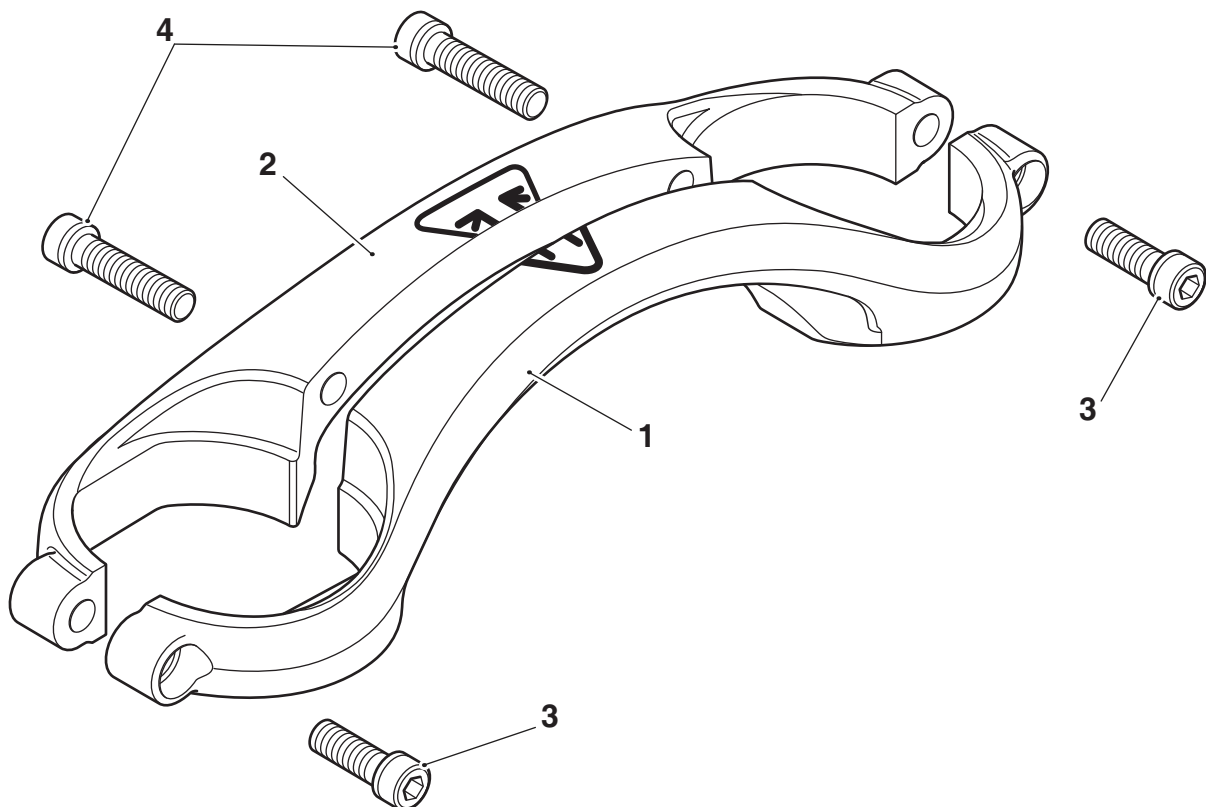
Fork Brace Kit	
Kit number	Models Affected
A2041204	Thruxton 1200

Thank you for choosing this Triumph genuine accessory kit. This accessory kit is the product of Triumph's use of proven engineering, exhaustive testing, and continuous striving for superior reliability, safety and performance.

Completely read all of these instructions before commencing the installation of the accessory kit in order to become thoroughly familiar with the kit's features and the installation process.

These instructions should be considered a permanent part of your accessory kit, and should remain with it even if your accessory-equipped motorcycle is subsequently sold.

Parts supplied



1. Fork brace, front section	1 off	3. Screw, M8 x 25 mm	2 off
2. Fork brace, rear section	1 off	4. Screw, M8 x 35 mm	2 off

Warning

The accessory kits covered in this instruction are designed for use on specific models of Triumph motorcycle. The accessory kits and the models applicable are listed at the start of the instruction. They should not be fitted to any other Triumph model or to any other manufacturer's motorcycle. Fitting an accessory kit to a Triumph model not listed, or to any other manufacturer's motorcycle will affect the performance, stability and handling of the motorcycle. This may affect the rider's ability to control the motorcycle and could cause an accident.

Warning

Always have Triumph approved parts, accessories and conversions fitted by a trained technician of an authorised Triumph dealer. The fitment of parts, accessories and conversions by a technician who is not of an authorised Triumph dealer may affect the handling, stability or other aspects of the motorcycle's operation which may result in loss of motorcycle control and an accident.

Warning

Throughout this operation, ensure that the motorcycle is stabilised and adequately supported to prevent risk of injury from the motorcycle falling.

Warning

A torque wrench of known accurate calibration must be used when fitting this accessory kit. Failure to tighten any of the fasteners to the correct torque specification may affect motorcycle performance, handling and stability. This may result in loss of motorcycle control and an accident.

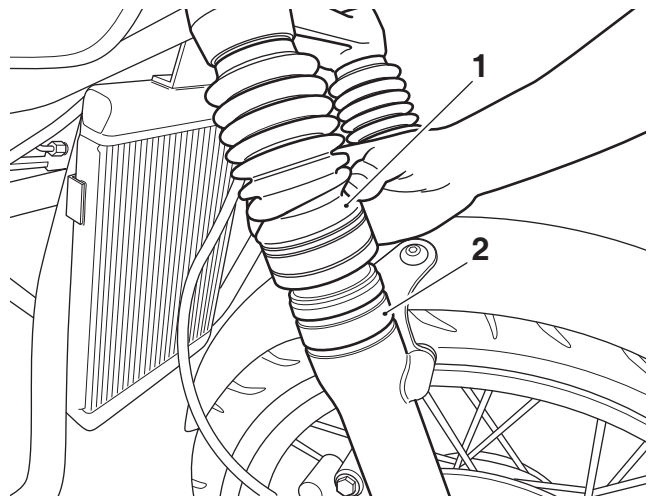
Warning

If the engine has recently been running, the exhaust system will be hot. Before working on or near the exhaust system, allow sufficient time for the system to cool, as touching any part of a hot exhaust could cause burn injuries.

Note:

- Triumph offers a broad range of approved genuine accessories for your motorcycle. We cannot therefore cover all possible equipment variations in these instructions. For removal and installation of Triumph Genuine Accessories, always refer to the instructions supplied with the respective accessory kit. To obtain additional copies of any Triumph accessory instructions, visit www.triumphinstructions.com or contact your authorised Triumph dealer.

- Slide the gaiters up the fork legs as shown.



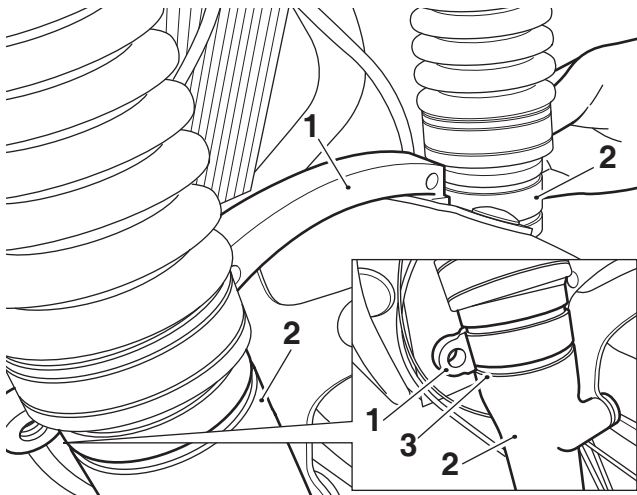
- Fork gaiter, right hand shown
- Lower fork leg, right hand shown

- Collect the front and rear fork brace sections and four screws provided from the kit.

! Caution

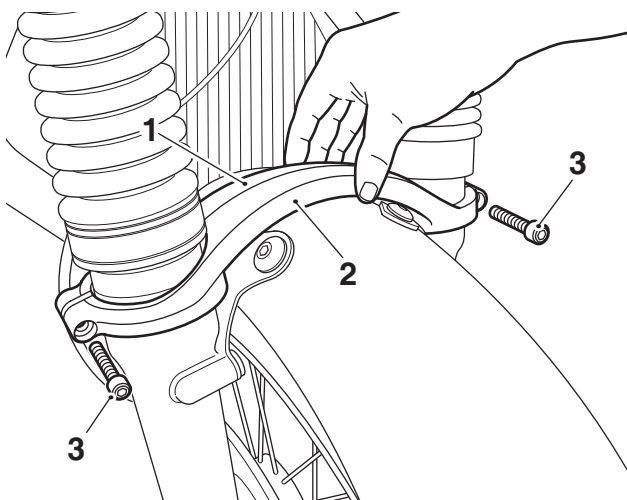
Care should be taken to ensure the fork brace does not contact any part of the motorcycle front mudguard when it is positioned over the mudguard onto the fork legs. If the fork brace is allowed to contact the front mudguard it could result in damage to the paintwork.

3. Fit the rear section of the fork brace onto the fork legs aligning the bottom of the fork brace with the lower gaiter location recess on the fork legs, as shown.



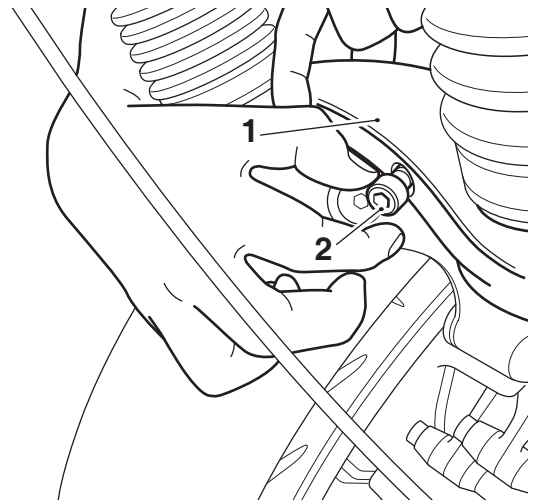
1. Fork brace, rear section
2. Fork leg
3. Lower gaiter recess, right hand side shown

4. Holding the rear section of the fork brace in position, locate the front section of the brace on the fork legs ensuring it is aligned correctly with the rear section. Fit the two M8 x 25 mm screws to the outer fixing positions, as shown. Do not fully tighten the screws at this stage.



1. Fork brace, rear section
2. Fork brace, front section
3. Screw, M8 x 25 mm

5. Fit the two M8 x 35 mm screws from the kit to the inner fixing positions of the rear fork brace section. Tighten the screws to **25 Nm**.



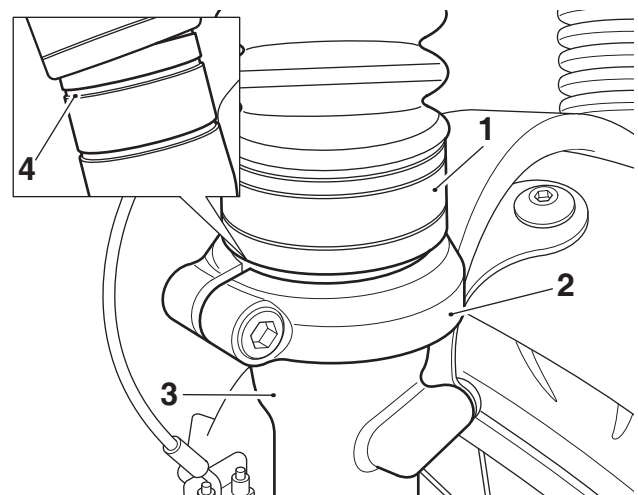
1. Fork brace, rear section
2. Screw, M8 x 35 mm, right hand side shown

6. Tighten the outer screws to **25 Nm**.

! Warning

Ensure the fork gaiters are located securely on the lower fork legs. If the gaiters are not securely located it could lead to water or debris ingress into the fork legs which could result in premature failure of the sealing arrangement. Any failure of the fork leg sealing arrangement will affect the performance of the front suspension and could lead to loss of motorcycle control and an accident.

7. Slide the fork gaiters down the fork legs and locate the gaiters securely into the upper location recesses of the fork legs, as shown.



1. Fork gaiter, right hand side shown
2. Fork brace
3. Fork leg, right hand side shown
4. Location recess, upper



Warning

If, after fitting this accessory kit, you have any doubt about the performance of any aspect of the motorcycle, contact an authorised Triumph dealer and do not ride the motorcycle until the authorised dealer has declared it fit for use. Riding a motorcycle when there is any doubt as to any aspect of the performance of the motorcycle may result in loss of control of the motorcycle leading to an accident.



Warning

Never ride an accessory-equipped motorcycle at speeds above 80 mph (130 km/h).

The presence of accessories will cause changes in the stability and handling of the motorcycle. Failure to allow for changes in motorcycle stability may lead to loss of control or an accident.

Remember that the 80 mph (130 km/h) limit will be reduced by the fitting of non-approved accessories, incorrect loading, worn tyres, overall motorcycle condition and poor road or weather conditions.



Warning

The motorcycle must not be operated above the legal road speed limit except in closed-course conditions.



Warning

Only operate this Triumph motorcycle at high speed in closed-course, on-road competition or on closed-course racetracks. High-speed operation should only be attempted by riders who have been instructed in the techniques necessary for high-speed riding and are familiar with the motorcycle's characteristics in all conditions.

High-speed operation in any other circumstances is dangerous and will lead to loss of motorcycle control and an accident.