



Accessory Fitting Instructions

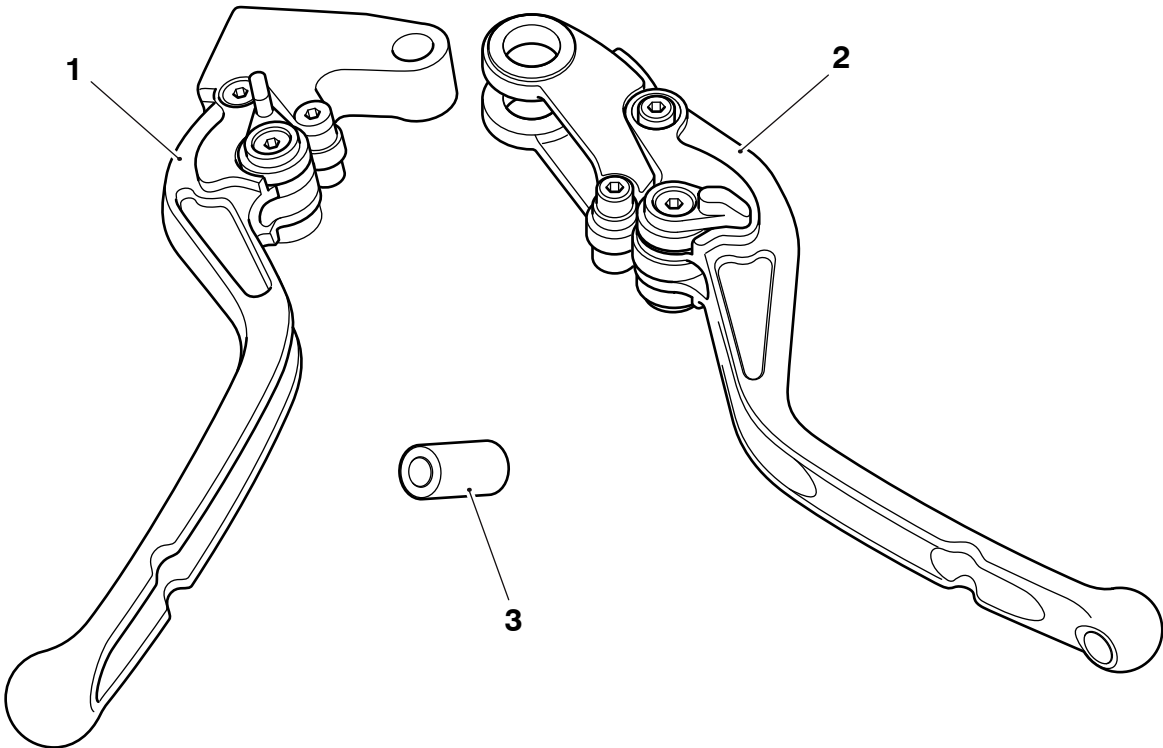
Thank you for choosing this Triumph genuine accessory kit. This accessory kit is the product of Triumph's use of proven engineering, exhaustive testing, and continuous striving for superior reliability, safety and performance.

Completely read all of these instructions before commencing the installation of the accessory kit in order to become thoroughly familiar with the kit's features and the installation process.

These instructions should be considered a permanent part of your accessory kit, and should remain with it even if your accessory equipped motorcycle is subsequently sold.

Machined Lever Kit	
Kit Number	Models
A2021447	Thruxton 1200 R, Thruxton RS, Speed Triple S, Speed Triple R, Street Triple R from VIN 793032 up to VIN 982752, Scrambler 1200 XC, Speed Twin
A9628100	Scrambler 1200 XC, Scrambler 1200 XE from VIN BP0885, Scrambler 1200 X

Parts supplied



1. Lever, clutch	1 off	3. Collar	1 off
2. Lever, brake	1 off		

⚠ WARNING

Fit only genuine Triumph accessories to those models approved by Triumph as listed in the associated Triumph fitting instructions.

The accessory kits covered in this instruction are designed for use on specific models of Triumph motorcycle. The accessory kits and the models applicable are listed at the start of the instruction. They should never be fitted to any other Triumph model or to any other manufacturer's motorcycle.

Fitting an accessory kit to a Triumph model not listed, or to any other manufacturer's motorcycle, will affect the performance, stability and handling of the motorcycle.

Failure to follow the advice above may lead to loss of motorcycle control which could result in serious injury or death.

⚠ WARNING

Always have Triumph approved parts, accessories and conversions fitted by a competent person with the specialist knowledge and technical understanding of motorcycles, such as an authorised Triumph dealer.

The fitment of parts, accessories and conversions by a person without the specialist knowledge and technical understanding of motorcycles may affect the handling, stability or other aspects of the motorcycle's operation.

Failure to follow the advice above may lead to loss of motorcycle control which could result in serious injury or death.

⚠ WARNING

A torque wrench of known accurate calibration must be used when fitting this accessory kit.

Failure to tighten any of the fasteners to the correct torque specification may affect motorcycle performance, handling and stability.

Failure to follow the advice above may lead to loss of motorcycle control which could result in serious injury or death.

⚠ WARNING

Make sure the motorcycle is stabilised and adequately supported.

Do not support the motorcycle on any ancillary component, the exhaust system or any other non structural parts of the motorcycle frame.

A correctly supported motorcycle will help prevent it from falling.

An unstable motorcycle may fall resulting in motorcycle damage, serious injury or death.

NOTICE

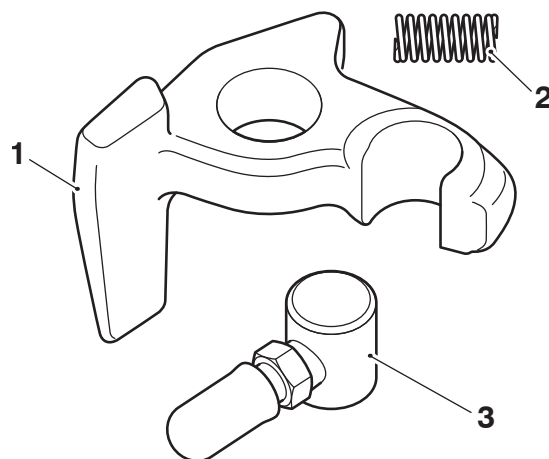
Triumph offers a broad range of approved genuine accessories for your motorcycle.

We cannot therefore cover all possible equipment variations in these instructions. For removal and installation of Triumph Genuine Accessories, always refer to the instructions supplied with the respective accessory kit.

To obtain additional copies of any Triumph accessory instructions, visit www.triumphinstructions.com or contact your authorised Triumph dealer.

Brake Lever Replacement

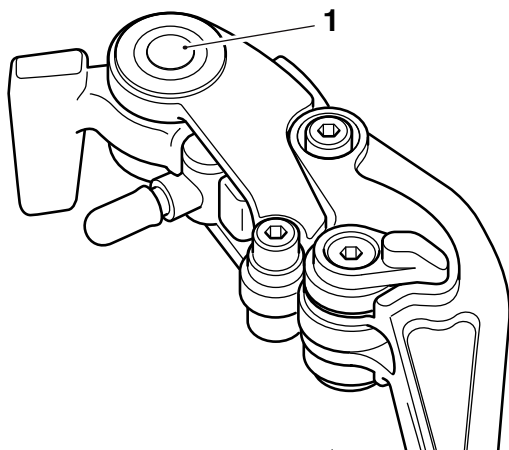
1. Remove the lock nut and pivot bolt from the front brake lever, remove the lever.
2. Retain the pivot bolt and lock nut for reuse.
3. Take note of how the brake lever is assembled to help reassembly. Using the Triumph Service Tool T3880636, remove the collar, knocker, spring and piston from the lever assembly, as described in the Service Manual. Retain the knocker, spring and piston for reuse. Retain the front brake lever if the motorcycle is to be returned to its original condition. Discard the original collar, the collar must be replaced if the motorcycle is to be returned to its original condition.



1. Knocker
2. Spring
3. Piston

4. Assemble the knocker, spring and piston to the machined brake lever from the kit in the order noted on removal in step 3. Once in position, fit the collar from the kit into the brake lever and bracket with the Triumph Service Tool T3880636, as described in the Service Manual.

5. Lightly lubricate the internal surface of the pivot hole in the adjustable brake lever with suitable rubber grease.



1. Pivot hole

⚠ CAUTION

When aligning the brake lever to the master cylinder bracket, care must be taken to ensure that the brake lever is correctly positioned against the brake switch.

A brake lever that is incorrectly positioned may damage the brake switch plunger, causing failure of the brake switch.

An inoperative or incorrectly functioning brake switch will prevent operation of the brake light, cruise control and riding mode functions.

⚠ CAUTION

Self-locking nuts can be reused, providing resistance can be felt when the locking portion passes over the thread of the bolt or stud.

Always use the correct replacement self-locking nut as recommended in the Triumph parts catalogue.

6. Refit the pivot bolt and tighten to **1 Nm** then, while holding the bolt, refit the lock nut and tighten to **6 Nm**.
7. Check the operation of the front brake and brake light. Rectify as necessary.

⚠ WARNING

Check for the correct operation of the brake lever before riding the motorcycle.

Riding the motorcycle without first checking the correct operation of the brake lever may lead to loss of motorcycle control which could result in serious injury or death.

⚠ WARNING

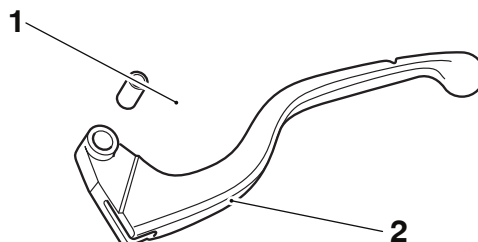
It is dangerous to operate the motorcycle with defective brakes.

The fault must be checked and rectified by a competent person with the specialist knowledge and technical understanding of motorcycles, such as an authorised Triumph dealer.

Failure to follow the advice above may lead to loss of motorcycle control which could result in serious injury or death..

Clutch Lever

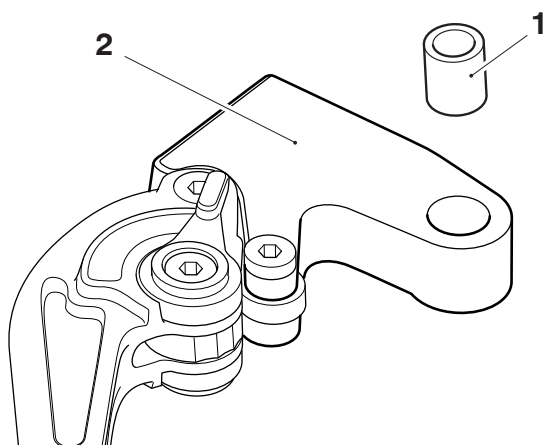
8. Loosen the clutch cable and detach it from the clutch lever as described in the Service Manual.
9. Remove the lock nut and pivot bolt from the clutch lever, remove the lever.
10. Retain the pivot bolt and lock nut for reuse.
11. Remove the collar from the clutch lever and retain for reuse.



1. Collar
2. Clutch lever

12. Retain the clutch lever if the motorcycle is to be returned to its original condition.
13. Lightly lubricate the collar with suitable rubber grease.

14. Fit the collar to the adjustable clutch lever.



1. Collar
2. Adjustable clutch lever

⚠ CAUTION

When aligning the clutch lever to the clutch lever bracket, care must be taken to ensure that the clutch lever is correctly positioned against the clutch switch.

A clutch lever that is incorrectly positioned may damage the clutch switch plunger, causing failure of the clutch switch.

An inoperative or incorrectly functioning clutch switch may prevent the motorcycle from starting or prevent operation of the cruise control and riding mode functions.

15. Position the adjustable clutch lever to its mounting bracket on the handlebar.

⚠ CAUTION

Self-locking nuts can be reused, providing resistance can be felt when the locking portion passes over the thread of the bolt or stud.

Always use the correct replacement self-locking nut as recommended in the Triumph parts catalogue.

16. Refit the pivot bolt, refit the lock nut and tighten to **3.5 Nm**.
17. Refit and adjust the clutch cable as described in the Service Manual.

⚠ WARNING

Move the handlebars to the left and right full lock checking that the cables and harness do not bind.

A cable or harness that binds will restrict the steering and may lead to loss of motorcycle control which could result in serious injury or death.

18. Adjust the lever to the required position by pushing the lever forward and moving the adjuster lever to align with one of the numbered positions. The distance from the hand grip to the released lever is shortest when set to number one and longest when set to number six.

⚠ WARNING

Do not attempt to adjust the levers with the motorcycle in motion as this could lead to loss of motorcycle control.

After adjusting the levers, operate the motorcycle in an area free from traffic to gain familiarity with the new lever setting.

Do not loan your motorcycle to anyone as they may change the lever setting from the one you are familiar leading to loss of motorcycle control which could result in serious injury or death.

Models with Cruise Control

19. Carry out a cruise control switch check as described in the Service Manual.

⚠ WARNING

The front brake and clutch switches are an integral part of the cruise control system.

To ensure the brake switches, brake light and clutch switch function correctly, the cruise control switch test must be carried out as described in the Service Manual.

Failure to carry out the cruise control switch test may lead to loss of motorcycle control which could result in serious injury or death.

⚠ WARNING

After fitting the accessory kit the motorcycle will exhibit new handling characteristics.

Operate the motorcycle in a safe area free from traffic to gain familiarity with any new characteristics.

Operation of the motorcycle when not familiar with any new handling characteristics may lead to loss of motorcycle control which could result in serious injury or death.

⚠ WARNING

If, after fitting this accessory kit, you have any doubt about the performance of any aspect of the motorcycle, contact a competent person with the specialist knowledge and technical understanding of motorcycles, such as an authorised Triumph dealer.

Riding a motorcycle when there is any doubt as to any aspect of the performance of the motorcycle may lead to loss of motorcycle control which could result in serious injury or death.

⚠ WARNING

Never ride an accessory-equipped motorcycle at speeds above 80 mph (130 km/h).

Remember that the 80 mph (130 km/h) limit will be reduced by the fitting of non-approved accessories, incorrect loading, worn tyres, overall motorcycle condition and poor road or weather conditions.

The presence of accessories will cause changes in the stability and handling of the motorcycle. Failure to allow for changes in motorcycle stability may lead to loss of motorcycle control which could result in serious injury or death.

⚠ WARNING

High-speed operation should only be attempted by riders who have been instructed in the techniques necessary for high-speed riding and are familiar with the motorcycle's characteristics in all conditions.

Only operate this Triumph motorcycle at high speed in closed-course, on-road competition or on closed-course racetracks.

High-speed operation in any other circumstances is dangerous and may lead to loss of motorcycle control which could result in serious injury or death.

NOTICE

The motorcycle must not be operated above the legal road speed limit except in closed-course conditions.